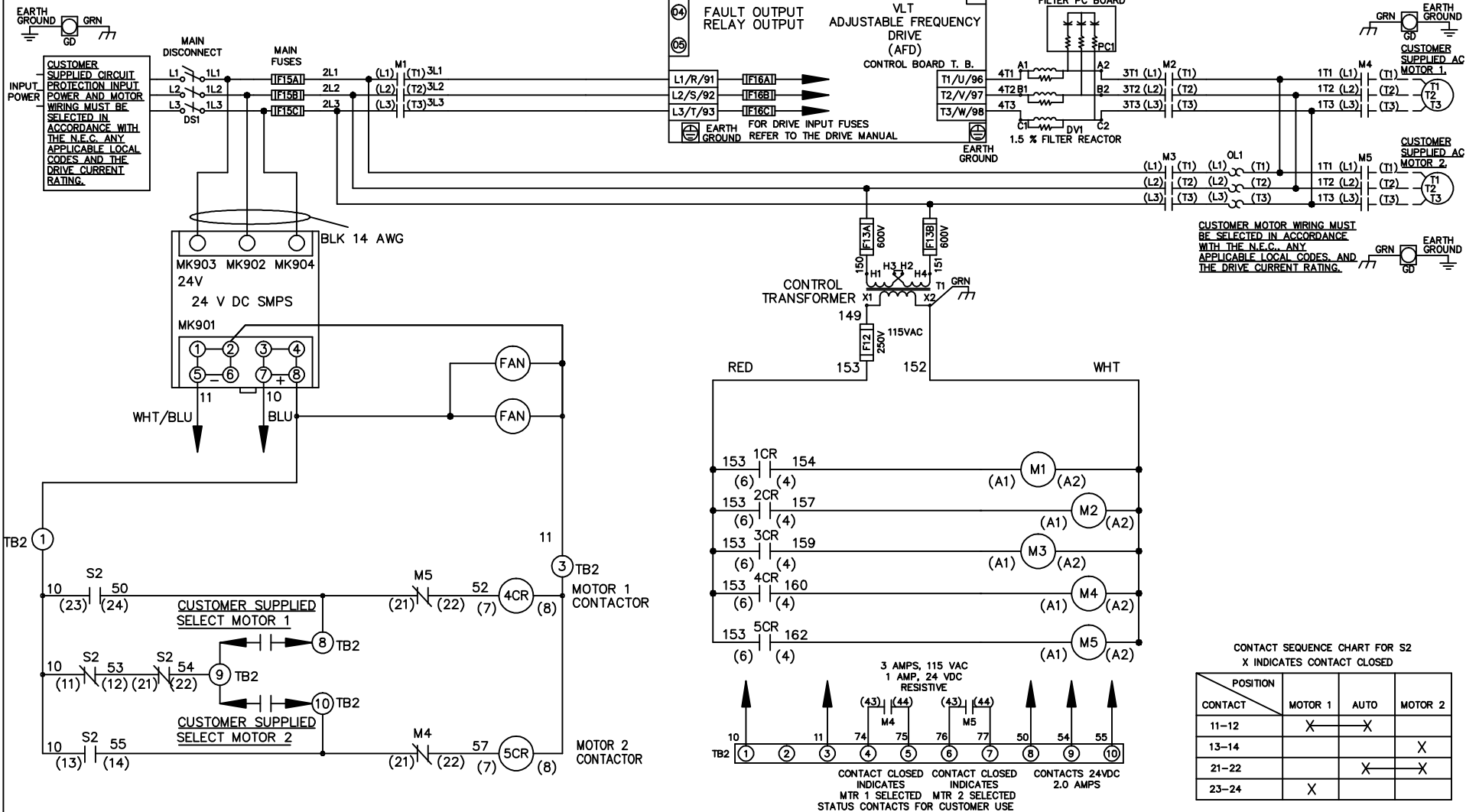


**WIRE COLOR SCHEME**

- BLACK - LINE VOLTAGE
- RED - AC CONTROL
- WHITE - AC GROUNDED
- WHITE - CIRCUIT CONDUCTOR
- BLUE - DC CONTROL
- WHT/BLU - DC CONTROL COMMON
- GREEN - CHASSIS GROUND



CUSTOMER MOTOR WIRING MUST BE SELECTED IN ACCORDANCE WITH THE N.E.C. ANY APPLICABLE LOCAL CODES, AND THE DRIVE CURRENT RATING.

**CONTACT SEQUENCE CHART FOR S2**  
X INDICATES CONTACT CLOSED

POSITION	MOTOR 1	AUTO	MOTOR 2
CONTACT 11-12	X	X	
CONTACT 13-14			X
CONTACT 21-22		X	X
CONTACT 23-24	X		

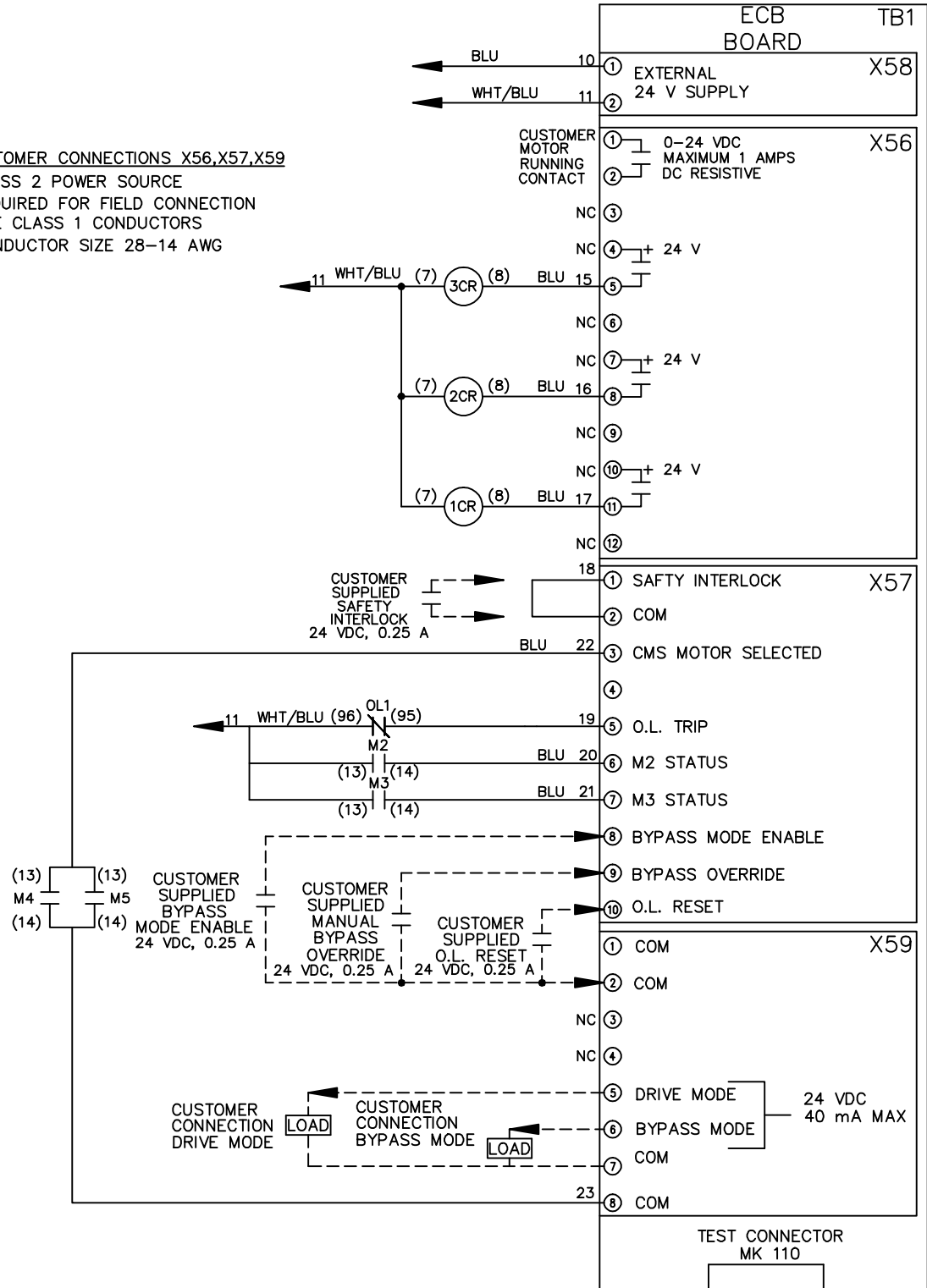
<p align="center">-NOTICE-</p> <p>THIS DRAWING IS PROPRIETARY AND SHALL NOT BE COPIED OR ITS CONTENTS DISCLOSED TO OUTSIDE PARTIES WITHOUT THE WRITTEN CONSENT OF THE TRANE COMPANY</p>			<p>DRN JNW 2/14/07</p>	<p>NAME 460 VOLT,3C,MAIN DISC ,MAIN FUSE,ECB,FRAME C2N12 ,DVDT,CMS</p>	<p>THE TRANE COMPANY A DIVISION OF AMERICAN STANDARD INC.</p>
<p>A SP08061 10/08</p>	<p>APR</p>	<p>MODEL</p>	<p>PAGE 1 OF 2</p>	<p>SIZE A</p>	<p>DWG NO. 174U8564</p>
<p>REV ECN DATE</p>	<p></p>	<p></p>	<p></p>	<p></p>	<p></p>

REV	ECN	DATE
A	SP08066	10/08

THIS DRAWING IS PROPRIETARY AND SHALL NOT BE COPIED OR ITS CONTENTS DISCLOSED TO OUTSIDE PARTIES WITHOUT THE WRITTEN CONSENT OF THE TRANE COMPANY

- NOTICE -

CUSTOMER CONNECTIONS X56,X57,X59  
 CLASS 2 POWER SOURCE  
 REQUIRED FOR FIELD CONNECTION  
 USE CLASS 1 CONDUCTORS  
 CONDUCTOR SIZE 28-14 AWG



DRN JNW  
2/14/07

NAME460 VOLT,3C,MAIN DISC  
,MAIN FUSE,ECB,FRAME C2N12  
,DVDI,CMS

THE TRANE COMPANY  
A DIVISION OF  
AMERICAN STANDARD INC.

APR

MODEL

PAGE 2 OF 2

SIZE A

DWG NO. 174U8564