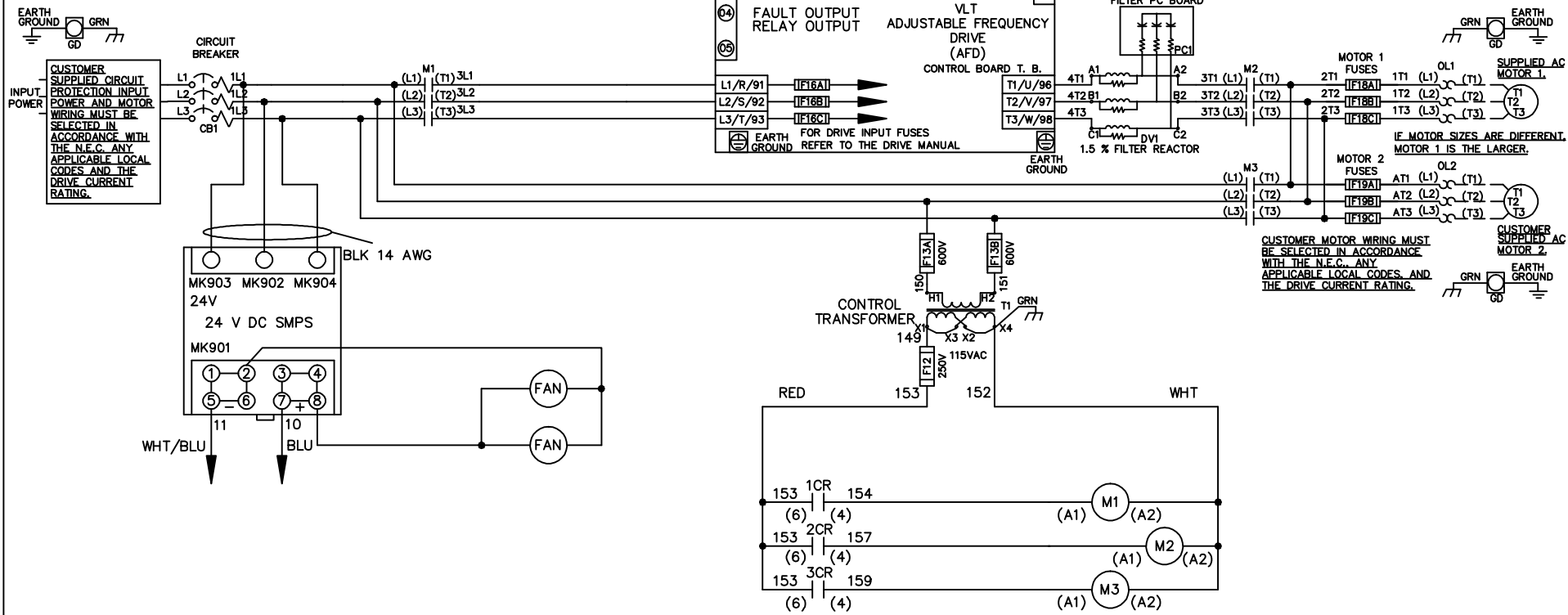


**WIRE COLOR SCHEME**  
 BLACK - LINE VOLTAGE  
 RED - AC CONTROL  
 WHITE - AC GROUND  
 WHITE - CIRCUIT CONDUCTOR  
 BLUE - DC CONTROL  
 WHT/BLU - DC CONTROL COMMON  
 GREEN - CHASSIS GROUND



-NOTICE-

THIS DRAWING IS PROPRIETARY AND SHALL NOT BE COPIED OR ITS CONTENTS DISCLOSED TO OUTSIDE PARTIES WITHOUT THE WRITTEN CONSENT OF THE TRANE COMPANY

DRN JNW  
2/14/07

APR

NAME 600 VOLT,3C,CB  
 ,DRIVE FUSE,ECB,FRAME C2N12  
 ,DVDT,DUAL MTR

THE TRANE COMPANY  
 A DIVISION OF  
 AMERICAN STANDARD INC.

REV	SP08061	10/08
ECN		DATE

REV	ECN	DATE
A	SP08066	10/08

THIS DRAWING IS PROPRIETARY AND SHALL NOT BE COPIED OR ITS CONTENTS DISCLOSED TO OUTSIDE PARTIES WITHOUT THE WRITTEN CONSENT OF THE TRANE COMPANY

**- NOTICE -**

CUSTOMER CONNECTIONS X56,X57,X59  
 CLASS 2 POWER SOURCE  
 REQUIRED FOR FIELD CONNECTION  
 USE CLASS 1 CONDUCTORS  
 CONDUCTOR SIZE 28-14 AWG

DRN JNW  
2/14/07

NAME600 VOLT,3C,CB  
,DRIVE FUSE,ECB,FRAME C2N12  
,DVDI,DUAL MTR

THE TRANE COMPANY  
A DIVISION OF  
AMERICAN STANDARD INC.

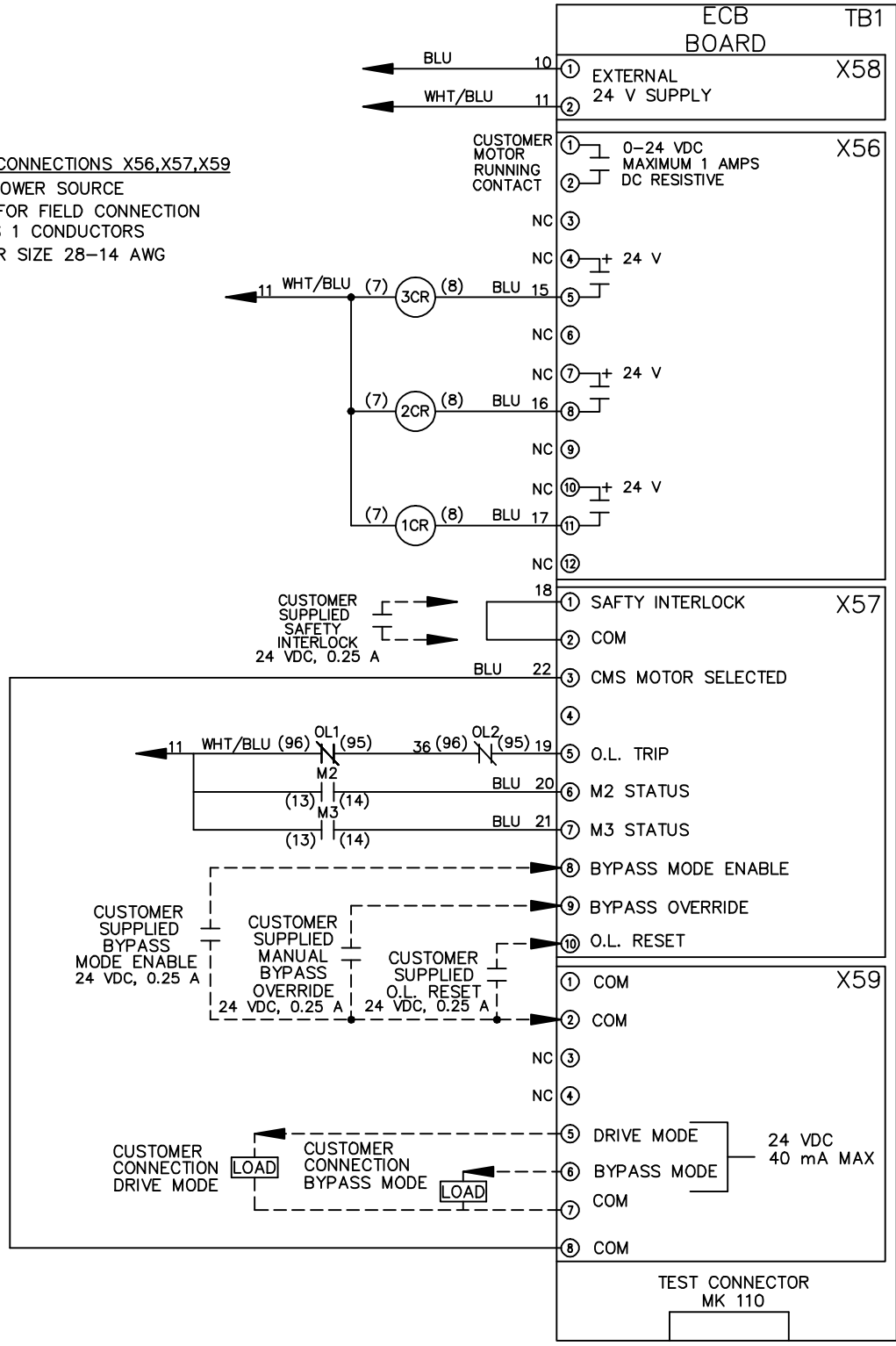
APR

MODEL

PAGE 2 OF 2

SIZE A

DWG NO. 174U8648



**ECB BOARD TB1**

① EXTERNAL 24 V SUPPLY X58

① CUSTOMER MOTOR RUNNING CONTACT X56  
② 0-24 VDC MAXIMUM 1 AMPS DC RESISTIVE

① SAFETY INTERLOCK X57  
② COM

① COM X59  
② COM

⑤ DRIVE MODE 24 VDC 40 mA MAX  
⑥ BYPASS MODE

TEST CONNECTOR MK 110