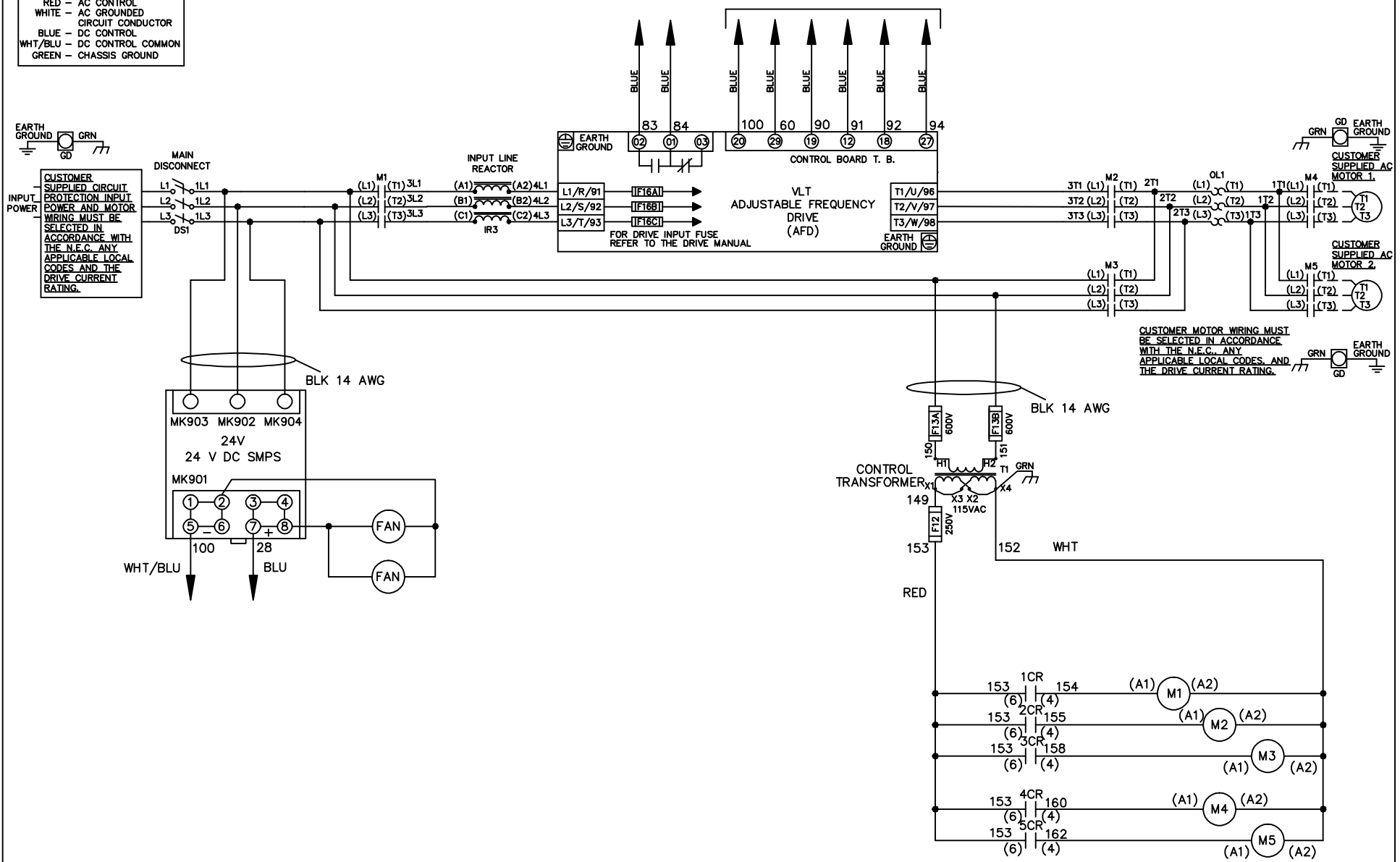


WIRE COLOR SCHEME
 BLACK - LINE VOLTAGE
 RED - AC CONTROL
 WHITE - AC GROUNDED
 BLUE - CIRCUIT CONDUCTOR
 BLUE - DC CONTROL
 WHT/BLU - DC CONTROL COMMON
 GREEN - CHASSIS GROUND

* ALL CONTROL WIRES ARE BLUE EXCEPT WHERE NOTED. TO ELECTROMECHANICAL RELAY BOARD



-NOTICE-			DRN JNW 2/14/07	NAME 600 VOLT, 3C, MAIN DISC , DRIVE FUSE, EMB2, FRAME C2N12 , REACTOR, CMS		THE TRANE COMPANY A DIVISION OF AMERICAN STANDARD INC.	
A	SP08061	10/08	APR	MODEL	PAGE 1 OF 2	SIZE A	DWG NO. 174U8668
REV	ECN	DATE					

REV	ECN	DATE
A	SP08066	10/08

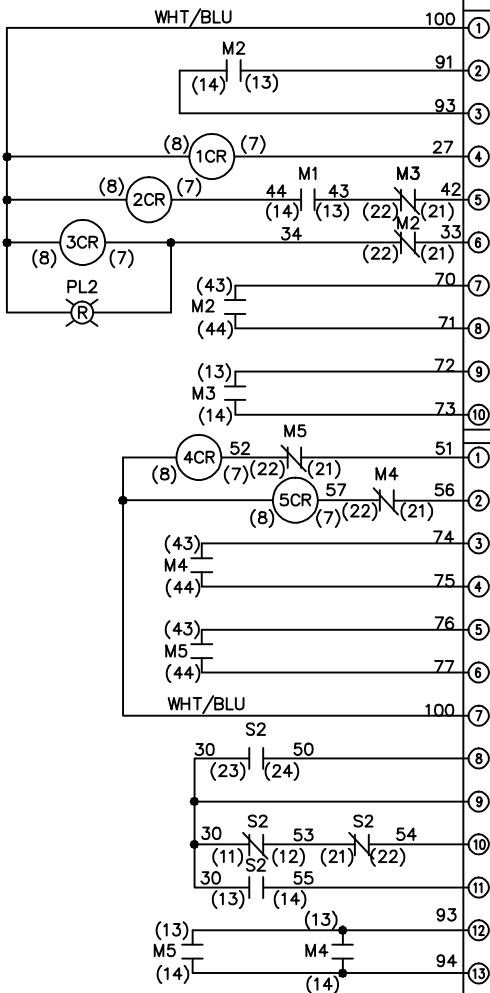
CONTACT	POSITION	DRIVE	OFF	BYPASS	TEST
1-2		X			
3-4				X	X
5-6		X			
7-8					X

THIS DRAWING IS PROPRIETARY AND SHALL NOT BE COPIED OR ITS CONTENTS DISCLOSED TO OUTSIDE PARTIES WITHOUT THE WRITTEN CONSENT OF THE TRANE COMPANY

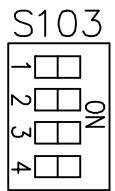
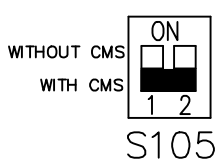
DRN JNW
 APR 2/14/07

NAME 600 VOLT, 3C, MAIN DISC
 DRIVE FUSE, EMB2, FRAME C2N12
 REACTOR, CMS

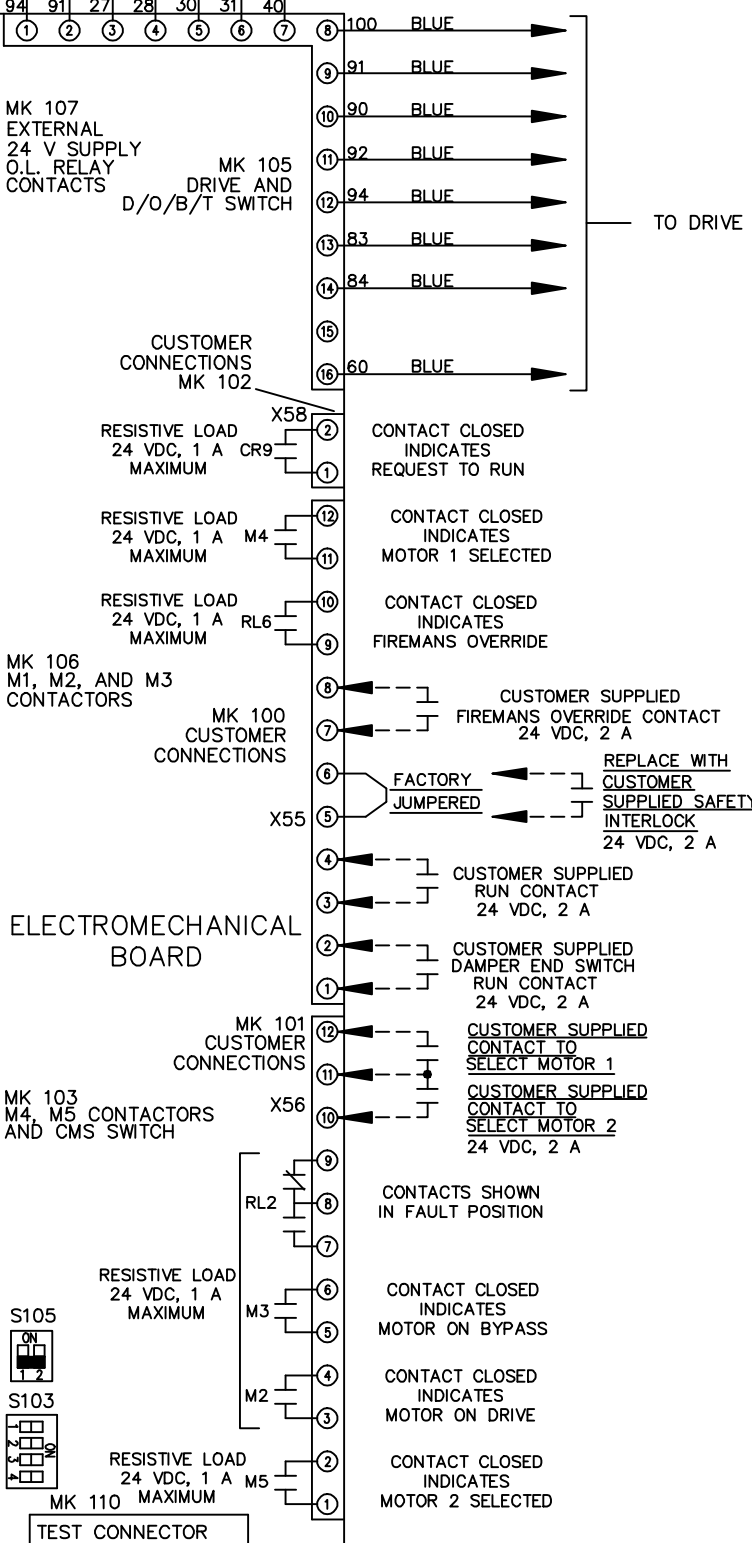
THE TRANE COMPANY
 A DIVISION OF
 AMERICAN STANDARD INC.



CONTACT	POSITION	MOTOR 1	AUTO	MOTOR 2
11-12		X	X	
13-14				X
21-22			X	
23-24		X		



(8) S1 (7) (2) S1 (1) (5) S1 (6)
 9 BLUE 91 BLUE 27 BLUE 28 BLUE 30 BLUE 31 BLUE 40 BLUE
 MK 107 EXTERNAL 24 V SUPPLY O.L. RELAY CONTACTS
 MK 105 DRIVE AND D/O/B/T SWITCH
 MK 106 M1, M2, AND M3 CONTACTORS
 MK 100 CUSTOMER CONNECTIONS
 MK 101 CUSTOMER CONNECTIONS
 MK 103 M4, M5 CONTACTORS AND CMS SWITCH
 MK 110 TEST CONNECTOR



CUSTOMER CONNECTIONS X55, X56, X58
 CLASS 2 POWER SOURCE
 REQUIRED FOR FIELD CONNECTION
 USE CLASS 1 CONDUCTORS
 CONDUCTOR SIZE 28-14 AWG