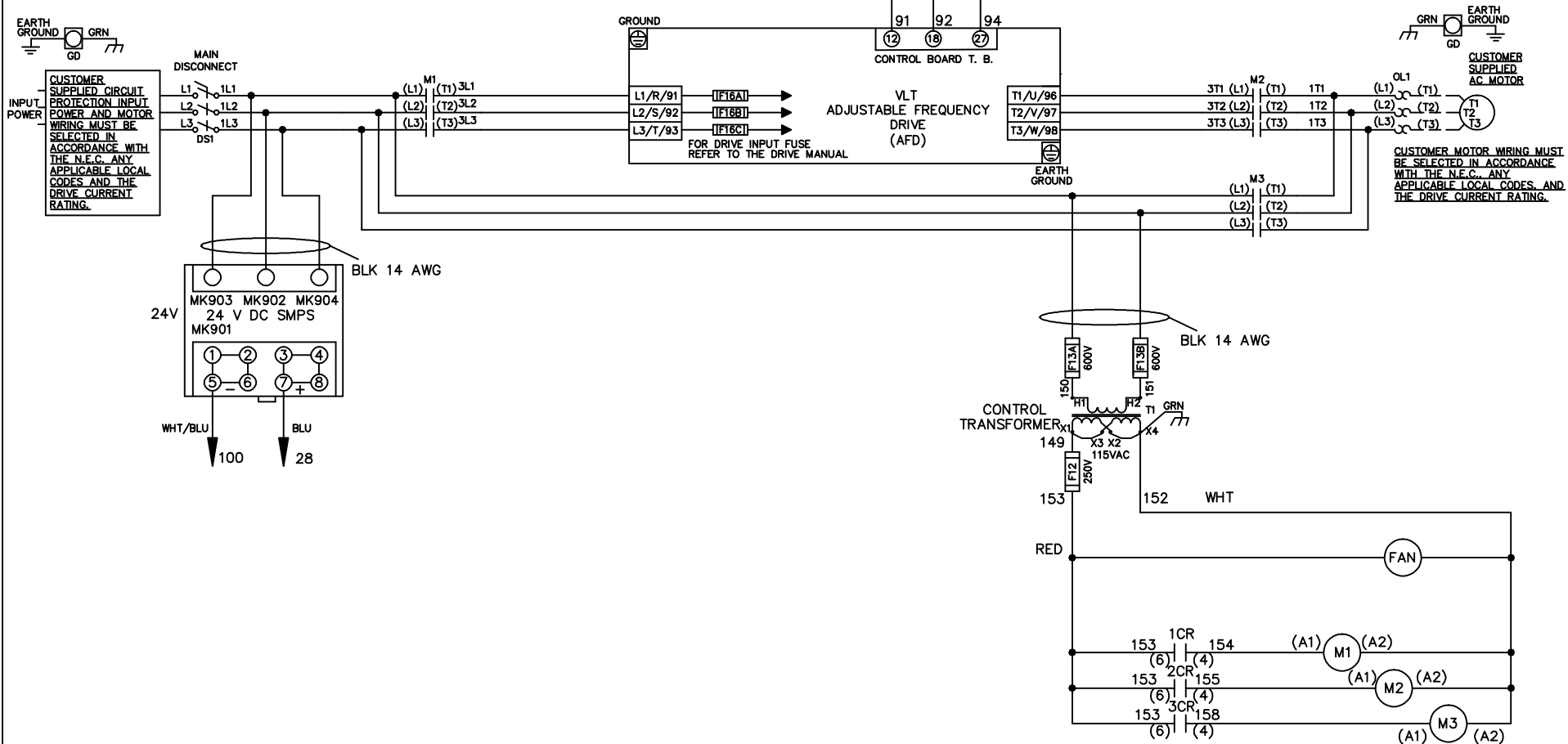


| WIRE COLOR SCHEME |                                 |
|-------------------|---------------------------------|
| BLACK             | - LINE VOLTAGE                  |
| RED               | - AC CONTROL                    |
| WHITE             | - AC GROUNDED CIRCUIT CONDUCTOR |
| BLUE              | - DC CONTROL                    |
| WHT/BLU           | - DC CONTROL COMMON             |
| GREEN             | - CHASSIS GROUND                |

\* ALL CONTROL WIRES ARE BLUE EXCEPT WHERE NOTED. TO ELECTROMECHANICAL RELAY BOARD



-NOTICE-

THIS DRAWING IS PROPRIETARY AND SHALL NOT BE COPIED OR ITS CONTENTS DISCLOSED TO OUTSIDE PARTIES WITHOUT THE WRITTEN CONSENT OF THE TRANE COMPANY

DRN JNW  
2/14/07

APR

NAME 600 VOLT,3C,MAIN DISC  
,DRIVE FUSE,EMB1,FRAME D1-D2  
,NO REACTOR & DVDT,SINGLE MTR

MODEL

PAGE 1 OF 2

SIZE A

DWG NO.

THE TRANE COMPANY  
A DIVISION OF  
AMERICAN STANDARD INC.

174U8876

|     |         |       |
|-----|---------|-------|
| A   | SP08061 | 10/08 |
| REV | ECN     | DATE  |

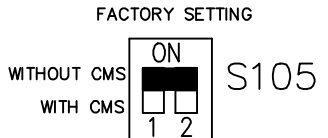
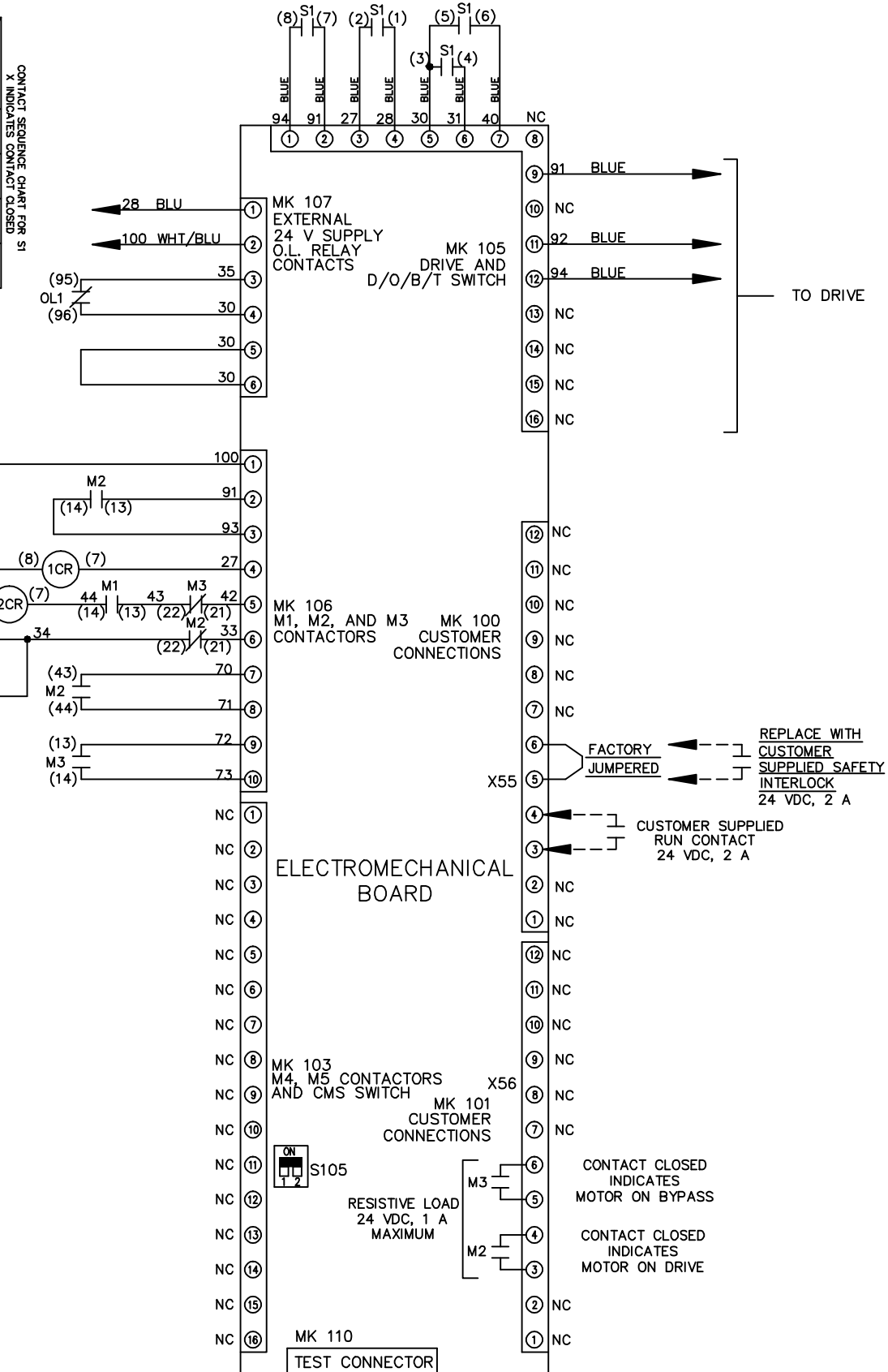
|     |         |       |     |     |     |         |       |  |             |     |          |  |
|-----|---------|-------|-----|-----|-----|---------|-------|--|-------------|-----|----------|--|
| REV | ECN     | DATE  | DRN | JNW | APR | 2/14/07 | MODEL | NAME 600 VOLT, 3C, MAIN DISC<br>, DRIVE FUSE, EMB1, FRAME D1-D2<br>, NO REACTOR & DVD1, SINGLE MTR | SIZE        | DWG | 174U8876 | THE TRANE COMPANY<br>A DIVISION OF<br>AMERICAN STANDARD INC. |
| A   | SP08066 | 10/08 |     |     |     |         |       |  | PAGE 2 OF 2 |     |          |  |

CONTACT SEQUENCE CHART FOR S1  
X INDICATES CONTACT CLOSED

| CONTACT | POSITION | DRIVE | OFF | BYPASS | TEST |
|---------|----------|-------|-----|--------|------|
| 1-2     |          | X     |     |        | X    |
| 3-4     |          |       |     | X      | X    |
| 5-6     |          | X     |     |        | X    |
| 7-8     |          |       |     |        | X    |

-NOTICE-

THIS DRAWING IS PROPRIETARY AND SHALL NOT BE COPIED OR ITS CONTENTS DISCLOSED TO OUTSIDE PARTIES WITHOUT THE WRITTEN CONSENT OF THE TRANE COMPANY



CUSTOMER CONNECTIONS X55, X56  
CLASS 2 POWER SOURCE  
REQUIRED FOR FIELD CONNECTION  
USE CLASS 1 CONDUCTORS  
CONDUCTOR SIZE 28-14 AWG