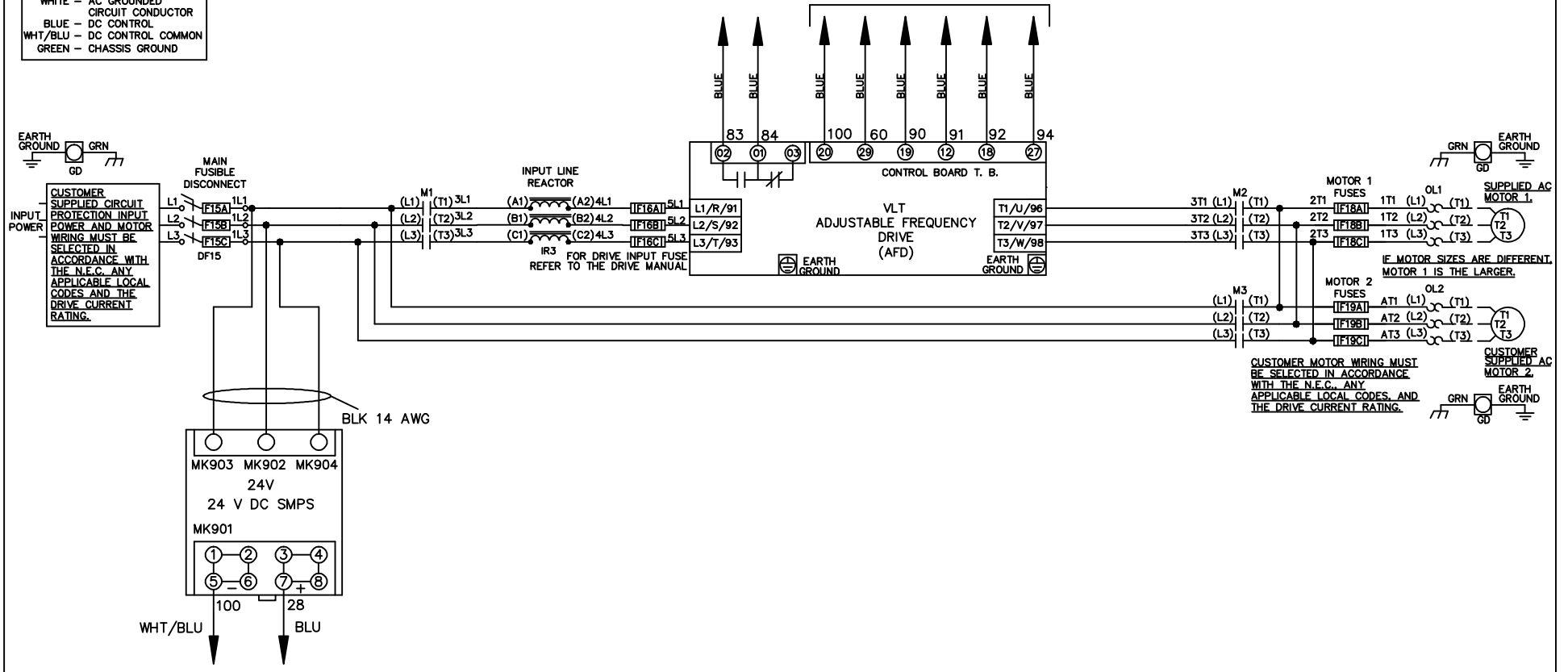


WIRE COLOR SCHEME
 BLACK - LINE VOLTAGE
 RED - AC CONTROL
 WHITE - AC GROUNDED
 CIRCUIT CONDUCTOR
 BLUE - DC CONTROL
 WHI/BLU - DC CONTROL COMMON
 GREEN - CHASSIS GROUND

* ALL CONTROL WIRES ARE BLUE EXCEPT WHERE NOTED. TO ELECTROMECHANICAL RELAY BOARD



REV	ECN	DATE
A	SP08061	10/08

- NOTICE -
 THIS DOCUMENT CONTAINS PROPRIETARY INFORMATION OF DANFOSS DRIVES. IT IS LOANED BY DANFOSS DRIVES SUBJECT TO THE CONDITIONS THAT IT AND THE INFORMATION EMBODIED THEREIN SHALL BE USED ONLY FOR RECORD AND REFERENCE PURPOSES, SHALL NOT BE USED OR CAUSED TO BE USED IN ANY WAY PREJUDICIAL TO THE INTERESTS OF DANFOSS DRIVES, SHALL NOT BE REPRODUCED OR COPIED IN WHOLE OR IN PART, OR DISCLOSED TO ANYONE WITHOUT THE DIRECT WRITTEN PERMISSION OF DANFOSS DRIVES AND SHALL BE RETURNED UPON REQUEST.

DRN JNW
 2/14/07
 APR

NAME 208-600VOLT,3C,MAIN DISC
 FUSIBLE,EMB2,FRAME A2-A3
 ,REACTOR,DUAL MTR
 MODEL

Danfoss
 PAGE 1 OF 2
 SIZE A
 DWG NO. 174U9038

REV	A	ECN	SP08066	DATE	10/08	DRN	JNW	2/14/07	MODEL	NAME 208-600VOLT, 3C, MAIN DISC FUSIBLE, EMB2, FRAME A2-A3 , REACTOR, DUAL MTR	PAGE	2 OF 2	SIZE	A	DWG NO.	174U9038
<p style="text-align: center;">- NOTICE -</p> <p>THIS DOCUMENT CONTAINS PROPRIETARY INFORMATION OF DAWROSS DRIVES. IT IS LOANED BY DAWROSS DRIVES SUBJECT TO THE CONDITIONS THAT IT AND THE INFORMATION THEREON THEREIN SHALL BE USED ONLY FOR RECORD AND REFERENCE PURPOSES. SHALL NOT BE USED OR CAUSED TO BE USED IN ANY MANNER THAT COULD BE USED TO DISCLOSE OR DISCLOSE TO ANYONE WITHOUT THE DIRECT WRITTEN PERMISSION OF DAWROSS DRIVES AND SHALL BE RETURNED UPON REQUEST.</p>																

CONTACT SEQUENCE CHART FOR S1
X INDICATES CONTACT CLOSED

CONTACT POSITION	DRIVE	OFF	BYPASS	TEST
1-2	X			X
3-4			X	X
5-6	X			X
7-8				X

