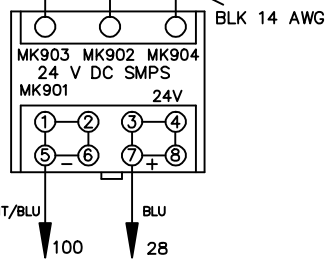
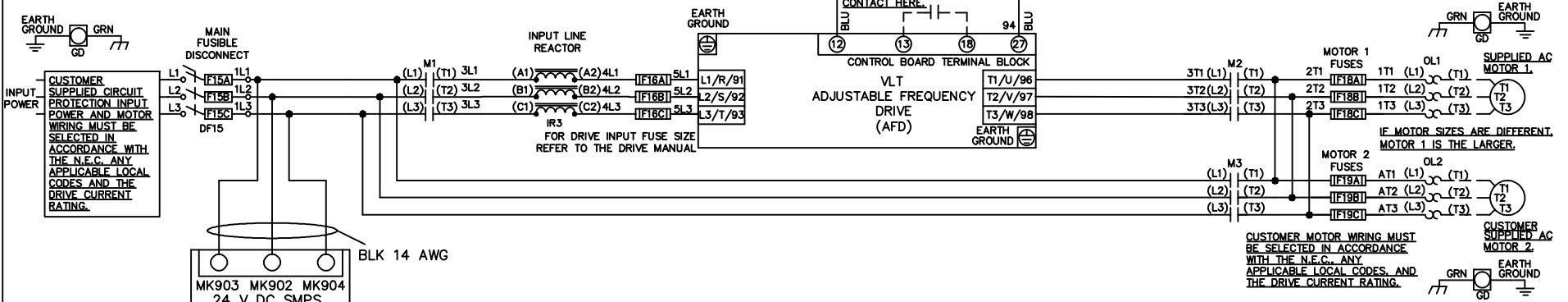


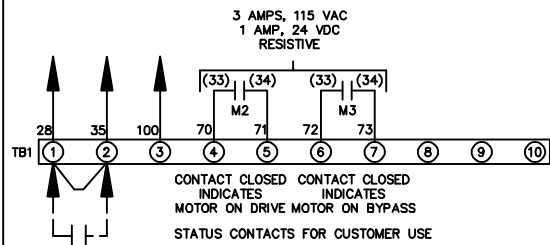
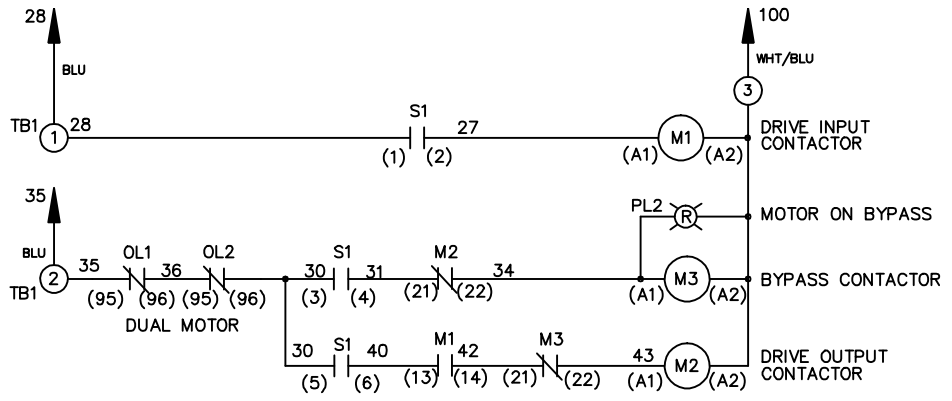
WIRE COLOR SCHEME
 BLACK - LINE VOLTAGE
 RED - AC CONTROL
 WHITE - AC GROUNDED
 BLUE - DC CONTROL
 WHT/BLU - DC CONTROL COMMON
 GREEN - CHASSIS GROUND

* ALL CONTROL WIRES ARE BLUE EXCEPT WHERE NOTED.



CONTACT SEQUENCE CHART FOR S1
 X INDICATES CONTACT CLOSED

| POSITION | DRIVE | OFF | BYPASS | TEST |
|-------------|-------|-----|--------|------|
| CONTACT 1-2 | X | | | X |
| CONTACT 3-4 | | | X | X |
| CONTACT 5-6 | X | | | |
| CONTACT 7-8 | | | | X |



WARNING DO NOT CONNECT ANY EXTERNAL DEVICES TO 28, 35, AND 100

| | | | | | | | | | |
|---|---------|-------|---------|--|-------------|--------|---|----------|--|
| -NOTICE- | | | DRNJNW | NAME 208-600VOLT, 3C, MAIN DISC FUSIBLE, EMB, FRAME A2-A3, REACTOR, DUAL MTR | | | THE TRANE COMPANY A DIVISION OF AMERICAN STANDARD INC. | | |
| THIS DRAWING IS PROPRIETARY AND SHALL NOT BE COPIED OR ITS CONTENTS DISCLOSED TO OUTSIDE PARTIES WITHOUT THE WRITTEN CONSENT OF THE TRANE COMPANY | | | 2/14/07 | | | | | | |
| REV | ECN | DATE | APR | MODEL | PAGE 1 OF 1 | SIZE A | DWG NO. | 174U9280 | |
| A | SP08061 | 10/08 | | | | | | | |