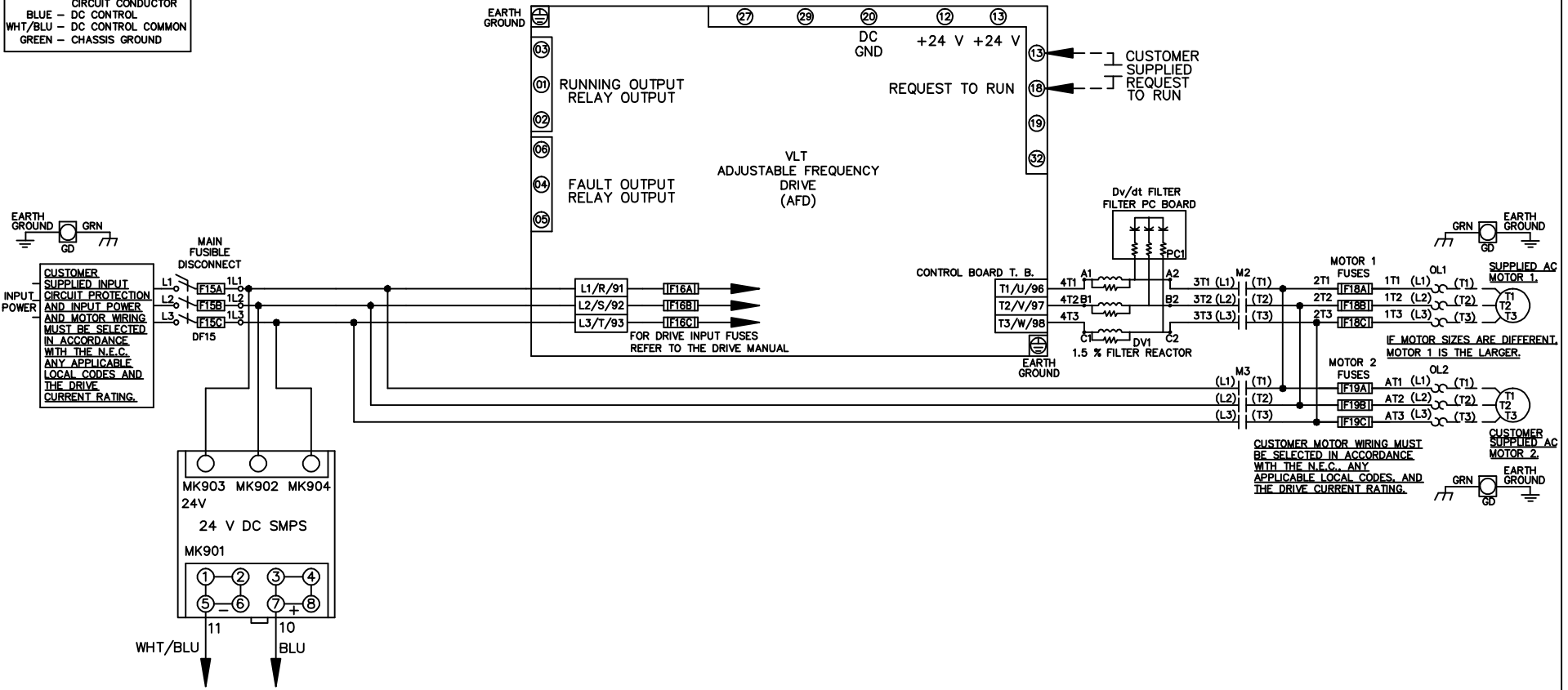


**WIRE COLOR SCHEME**  
 BLACK - LINE VOLTAGE  
 RED - AC CONTROL  
 WHITE - AC GROUNDED  
           CIRCUIT CONDUCTOR  
 BLUE - DC CONTROL  
 WHT/BLU - DC CONTROL COMMON  
 GREEN - CHASSIS GROUND



A	SP08061	10/08
REV	ECN	DATE

-NOTICE-  
 THIS DRAWING IS PROPRIETARY AND SHALL NOT  
 BE COPIED OR ITS CONTENTS DISCLOSED TO  
 OUTSIDE PARTIES WITHOUT THE WRITTEN  
 CONSENT OF THE TRANE COMPANY

DRN JNW  
 2/14/07  
 APR

NAME 208-600VOLT, 2C, MAIN DISC  
 FUSIBLE, ECB, FRAME A5-B1  
 ,DVDT, DUAL MTR  
 MODEL

**THE TRANE COMPANY**  
 A DIVISION OF  
 AMERICAN STANDARD INC.  
 PAGE 1 OF 2    SIZE A    DWG NO. 174U9321

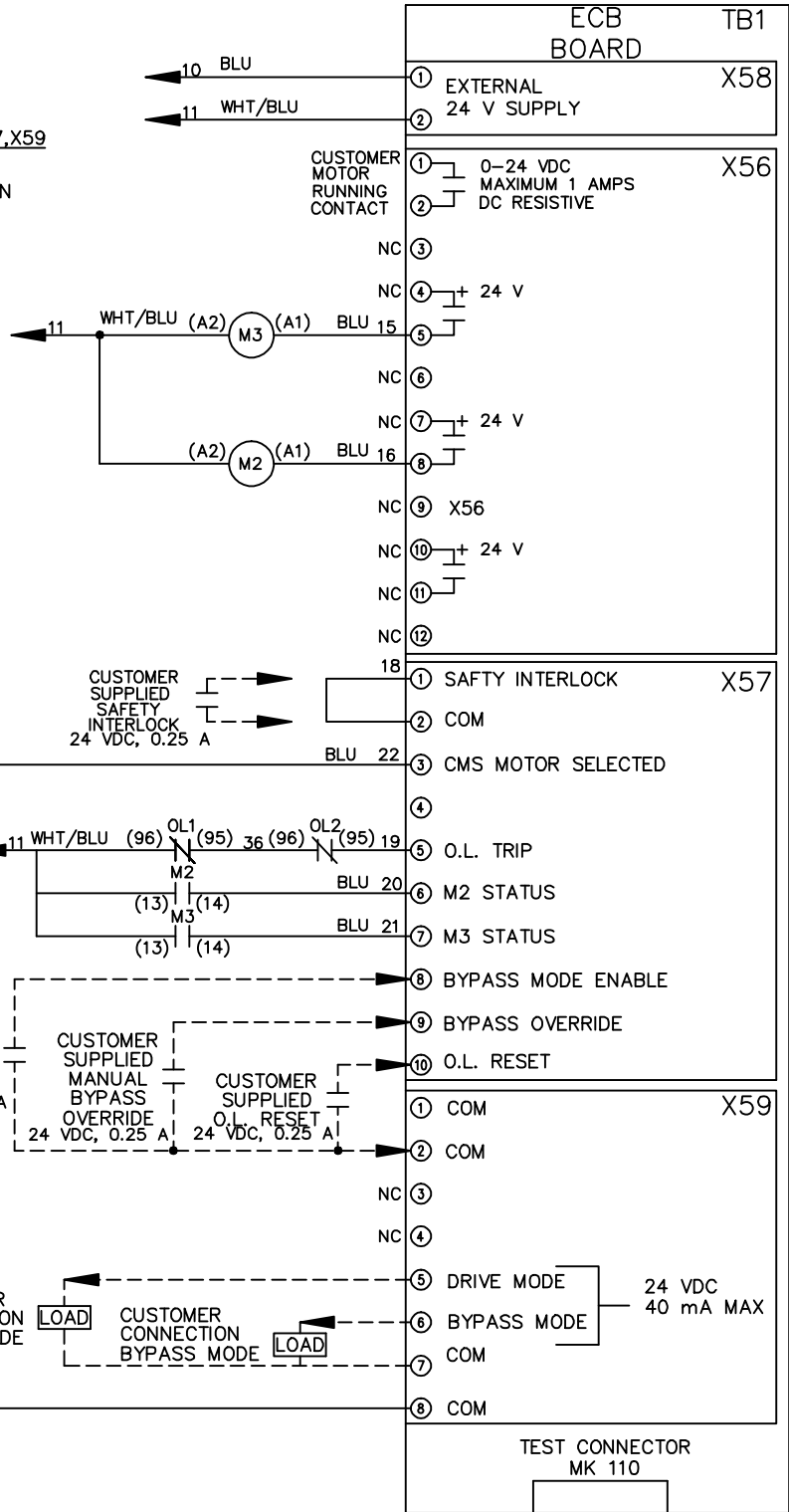
REV	A	ECN	SP08066	DATE	10/08
-----	---	-----	---------	------	-------

THIS DRAWING IS PROPRIETARY AND SHALL NOT BE COPIED OR ITS CONTENTS DISCLOSED TO OUTSIDE PARTIES WITHOUT THE WRITTEN CONSENT OF THE TRANE COMPANY

-NOTICE-

**CUSTOMER CONNECTIONS X56,X57,X59**

CLASS 2 POWER SOURCE  
 REQUIRED FOR FIELD CONNECTION  
 USE CLASS 1 CONDUCTORS  
 CONDUCTOR SIZE 28-14 AWG



DRN JNW  
 2/14/07  
 APR

NAME 208-600VOLT,2C,MAIN DISC  
 FUSIBLE,ECB,FRAME A5-B1  
 ,DVDT,DUAL MTR

MODEL  
 PAGE 2 OF 2  
 SIZE A  
 DWG NO. 174U9321

THE TRANE COMPANY  
 A DIVISION OF  
 AMERICAN STANDARD INC.