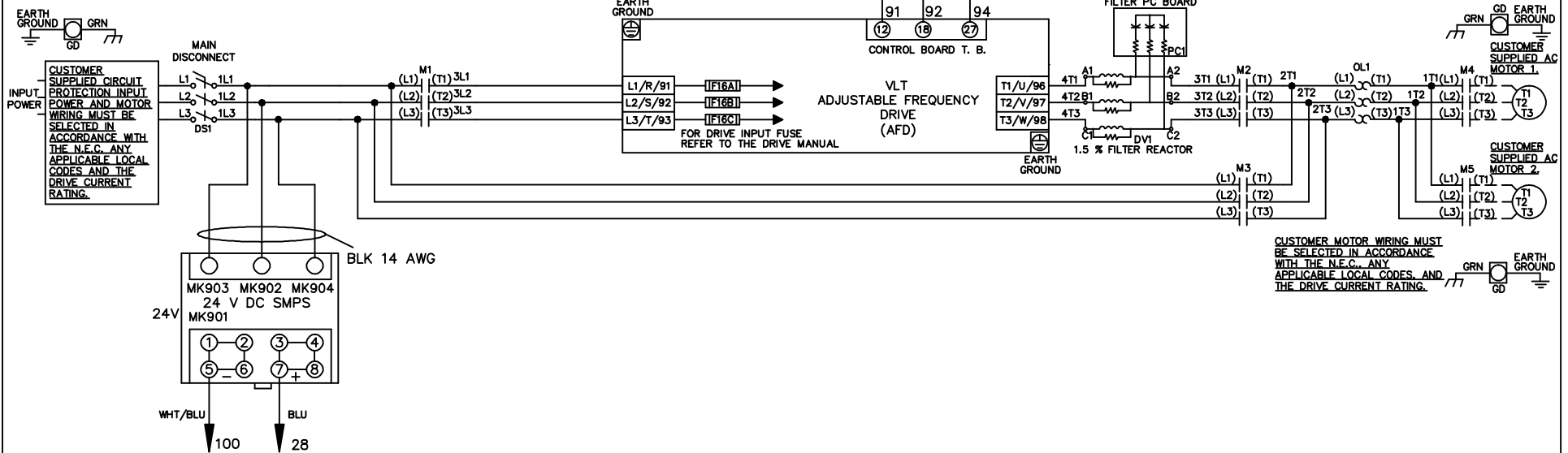
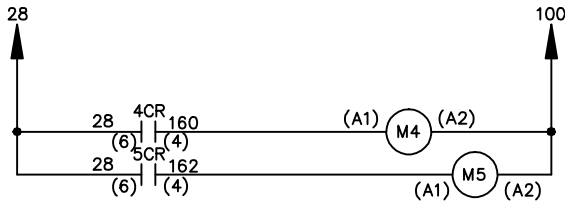


**WIRE COLOR SCHEME**  
 BLACK - LINE VOLTAGE  
 RED - AC CONTROL  
 WHITE - AC GROUNDED  
 CIRCUIT CONDUCTOR  
 BLUE - DC CONTROL  
 WHT/BLU - DC CONTROL COMMON  
 GREEN - CHASSIS GROUND

\* ALL CONTROL WIRES ARE BLUE EXCEPT WHERE NOTED. TO ELECTROMECHANICAL RELAY BOARD



CUSTOMER MOTOR WIRING MUST BE SELECTED IN ACCORDANCE WITH THE N.E.C. ANY APPLICABLE LOCAL CODES AND THE DRIVE CURRENT RATING.



|   |     |      |         |                               |       |   |             |        |         |
|---|-----|------|---------|-------------------------------|-------|---|-------------|--------|---------|
| -NOTICE-  |     |      | DRN JNW | NAME 208-600VOLT,3C,MAIN DISC |       | <b>THE TRANE COMPANY</b><br>A DIVISION OF<br>AMERICAN STANDARD INC. |             |        |         |
| THIS DRAWING IS PROPRIETARY AND SHALL NOT BE COPIED OR ITS CONTENTS DISCLOSED TO OUTSIDE PARTIES WITHOUT THE WRITTEN CONSENT OF THE TRANE COMPANY |     |      | 2/14/07 | ,DRIVE FUSE,EMB1,FRAME B2-C1  |       |   |             |        |         |
|   |     |      | A       | SP08061                       | 10/08 | MODEL   | PAGE 1 OF 2 | SIZE A | DWG NO. |
| REV   | ECN | DATE | APR     |                               |       |   |             |        |         |

|     |         |       |
|-----|---------|-------|
| REV | ECON    | DATE  |
| A   | SP08066 | 10/08 |

| CONTACT POSITION | DRIVE | OFF BYPASS | TEST |
|------------------|-------|------------|------|
| 1-2              | X     |            |      |
| 3-4              |       | X          |      |
| 5-6              |       |            | X    |
| 7-8              |       |            | X    |

CONTACT SEQUENCE CHART FOR S1  
X INDICATES CONTACT CLOSED

THIS DRAWING IS PROPRIETARY AND SHALL NOT BE COPIED OR ITS CONTENTS DISCLOSED TO OUTSIDE PARTIES WITHOUT THE WRITTEN CONSENT OF THE TRANE COMPANY

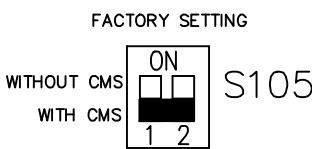
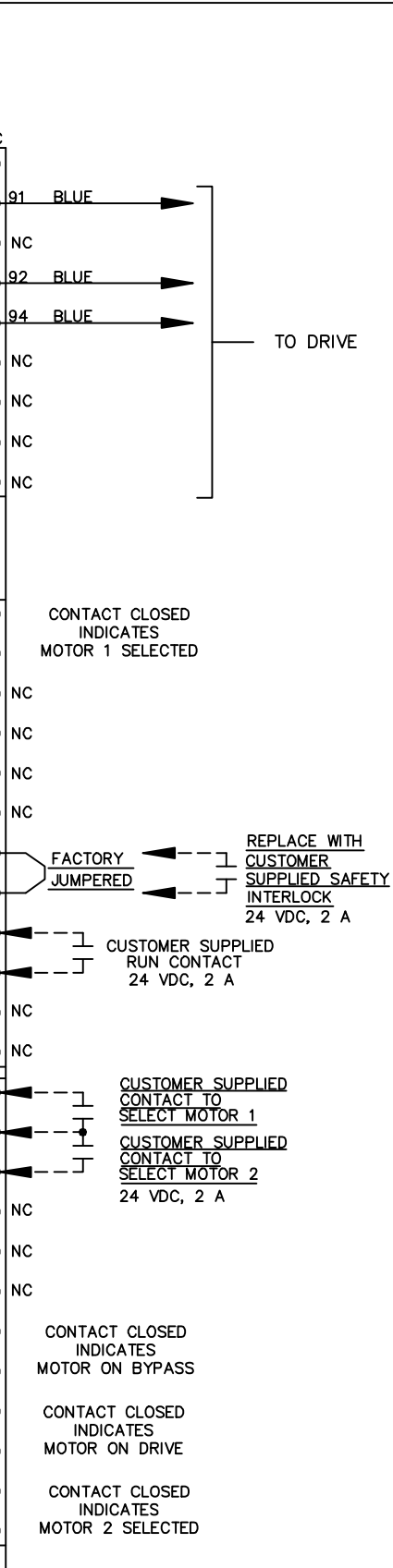
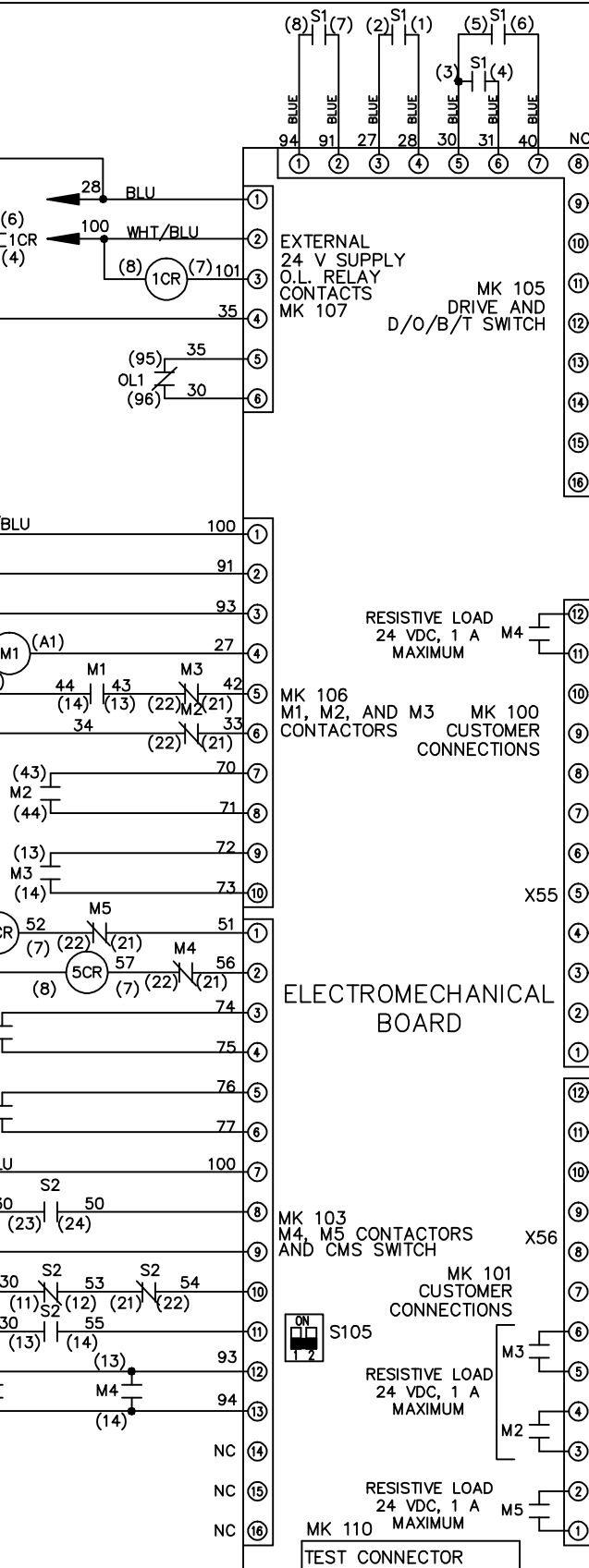
DRN JNW  
2/14/07

MODEL NAME 208-600VOLT, 3C, MAIN DISC  
, DRIVE FUSE, EMB1, FRAME B2-C1  
, DVDI, CMS

PAGE 2 OF 2  
SIZE A  
DWG NO. 174U9993

| CONTACT POSITION | MOTOR 1 | AUTO | MOTOR 2 |
|------------------|---------|------|---------|
| 11-12            | X       | X    |         |
| 13-14            |         |      | X       |
| 21-22            |         |      | X       |
| 23-24            | X       |      |         |

CONTACT SEQUENCE CHART FOR S2  
X INDICATES CONTACT CLOSED



CUSTOMER CONNECTIONS X55, X56  
CLASS 2 POWER SOURCE  
REQUIRED FOR FIELD CONNECTION  
USE CLASS 1 CONDUCTORS  
CONDUCTOR SIZE 28-14 AWG

NOTICE -

TO DRIVE

ELECTROMECHANICAL BOARD

MK 103  
M4, M5 CONTACTORS  
AND CMS SWITCH

MK 101  
CUSTOMER  
CONNECTIONS

RESISTIVE LOAD  
24 VDC, 1 A  
MAXIMUM

RESISTIVE LOAD  
24 VDC, 1 A  
MAXIMUM

MK 110  
MAXIMUM

TEST CONNECTOR

RESISTIVE LOAD  
24 VDC, 1 A  
MAXIMUM

MK 106  
M1, M2, AND M3  
CONTACTORS

MK 100  
CUSTOMER  
CONNECTIONS

CONTACT CLOSED  
INDICATES  
MOTOR 1 SELECTED

REPLACE WITH  
CUSTOMER  
SUPPLIED SAFETY  
INTERLOCK  
24 VDC, 2 A

CUSTOMER SUPPLIED  
RUN CONTACT  
24 VDC, 2 A

CUSTOMER SUPPLIED  
CONTACT TO  
SELECT MOTOR 1

CUSTOMER SUPPLIED  
CONTACT TO  
SELECT MOTOR 2  
24 VDC, 2 A

CONTACT CLOSED  
INDICATES  
MOTOR ON BYPASS

CONTACT CLOSED  
INDICATES  
MOTOR ON DRIVE

CONTACT CLOSED  
INDICATES  
MOTOR 2 SELECTED