

SEE DETAIL A  
FOR BRAKE  
TERMINAL LOCATION

186 [ 7.3 ]

17 [ 0.7 ]

586 [ 23.0 ]  
518 [ 20.4 ]  
405 [ 15.9 ]  
293 [ 11.5 ]  
181 [ 7.1 ]  
68 [ 2.7 ]

CHASSIS/IP00  
TERMINAL LOCATION - STANDARD

409 [ 16.1 ]  
371 [ 14.6 ]  
280 [ 11.0 ]  
192 [ 7.6 ]  
154 [ 6.1 ]

CHASSIS/IP00  
TERMINAL LOCATION - STANDARD

F  
E

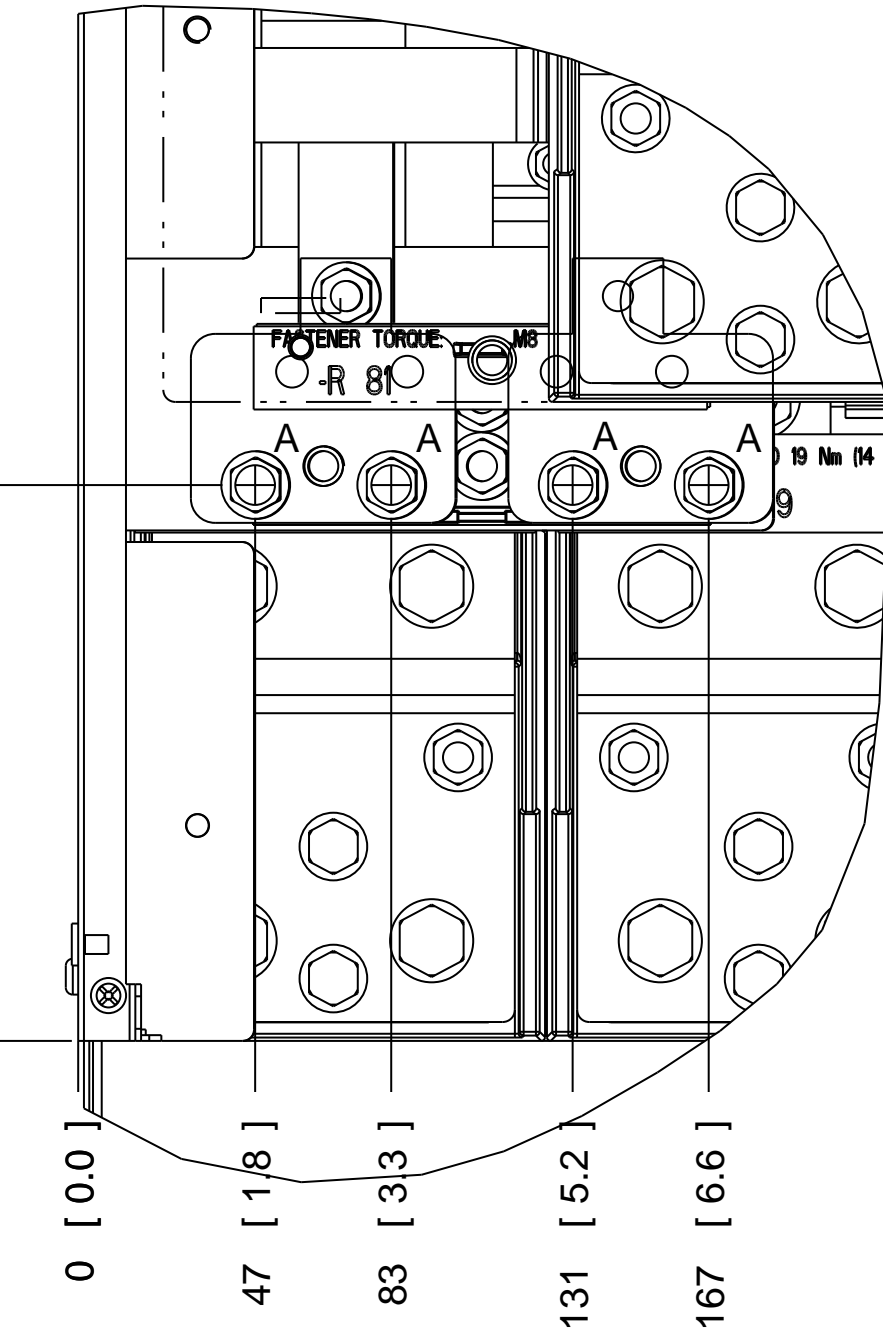
CHASSIS/IP00  
TERMINAL LOCATION - DISCONNECT

CHASSIS/IP00  
TERMINAL LOCATION - DISCONNECT

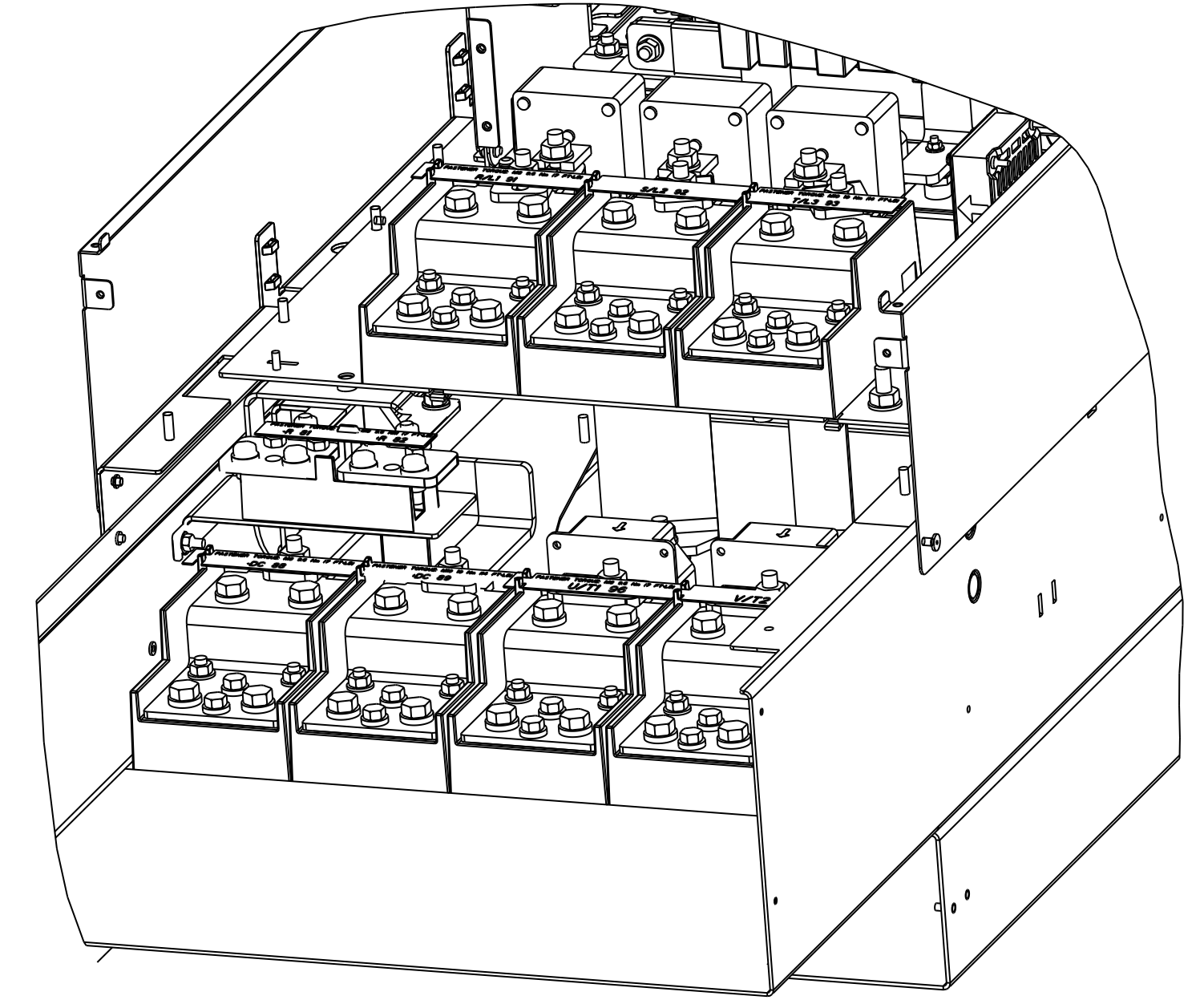
NOTES:  
REFER SHEET 3 FOR INDIVIDUAL TERMINAL DETAILS.

147 [ 5.8 ]

0 [ 0.0 ]



DETAIL A  
BRAKE TERMINAL LOCATION  
(REFER SHEET 3 FOR TERMINAL  
BOLT SIZE AND TORQUE VALUE)



FRAME	UNIT TYPE	DIMENSION FOR DISCONNECT TERMINAL					
		A	B	C	D	E	F
E2	IPOO/CHASSIS						
	250/315 kW (400V) AND 355/450-500/630 KW (690 V) (350/450 HP (460 V) AND 400/450-600/650 HP (575 V))	381 (15.0)	245 (9.6)	334 (13.1)	423 (16.7)	256 (10.1)	N/A
E1	315/355-400/450 kW (400V) (450/500-550/600 HP (460V))	383 (15.1)	244 (9.6)	334 (13.1)	424 (16.7)	109 (4.3)	149 (5.8)
	IP54/IP21 UL AND NEMA1/NEMA12	REFER SHEET 2					
E1	250/315 kW (400V) AND 355/450-500/630 KW (690 V) (350/450 HP (460 V) AND 400/450-600/650 HP (575 V))	381 (15.0)	253 (9.9)	342 (13.5)	431 (17.0)	562 (22.1)	N/A
	315/355-400/450 kW (400V) (450/500-550/600 HP (460V))	371 (14.6)	251 (9.9)	341 (13.4)	431 (17.0)	416 (16.4)	455 (17.9)

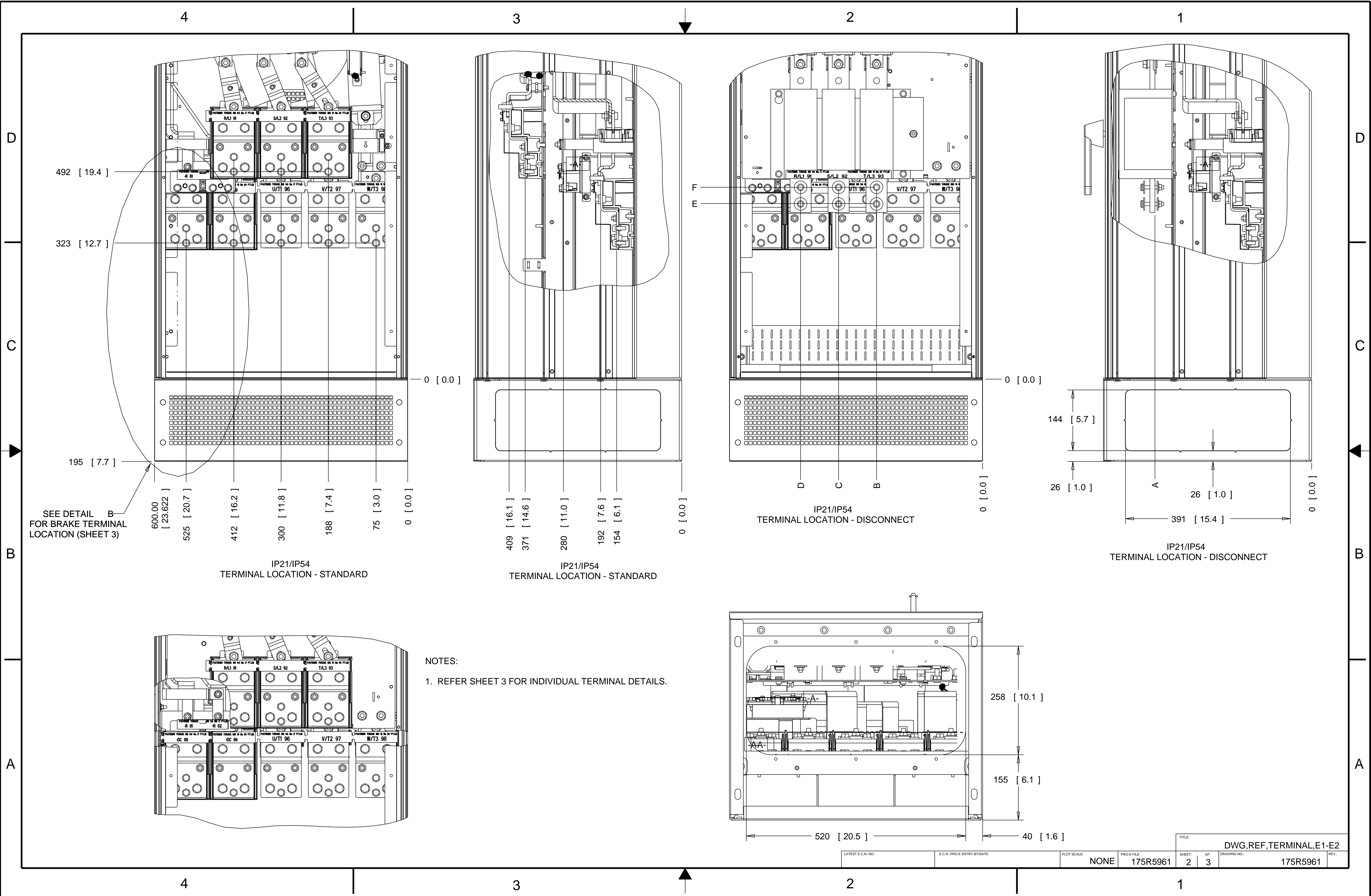
- NOTICE -  
THIS DOCUMENT CONTAINS PROPRIETARY INFORMATION OF DANFOSS DRIVES. IT IS LOANED BY DANFOSS DRIVES SUBJECT TO THE CONDITIONS THAT IT AND THE INFORMATION EMBODIED THEREIN SHALL BE USED ONLY FOR RECORD AND REFERENCE PURPOSES. SHALL NOT BE USED OR CAUSED TO BE USED IN ANY WAY PREJUDICIAL TO THE INTERESTS OF DANFOSS DRIVES. SHALL NOT BE REPRODUCED OR COPIED IN WHOLE OR IN PART OR DISCLOSED TO ANYONE WITHOUT THE DIRECT WRITTEN PERMISSION OF DANFOSS DRIVES, AND SHALL BE RETURNED UPON REQUEST.

PROJECT ENTRY BYDATE: KD 11/06/07  
DESIGNED BYDATE: KD 11/06/07  
APPROVAL:

CHECKED BYDATE:  
MFG. APPROVAL BYDATE:  
ENG. APPROVAL BYDATE:

TITLE: DWG, REF, TERMINAL, E1-E2

PROJ. FILE: 175R5961  
SHEET: 1 OF 3  
DRAWING NO.: 175R5961  
REV:



SEE DETAIL B FOR BRAKE TERMINAL LOCATION (SHEET 3)

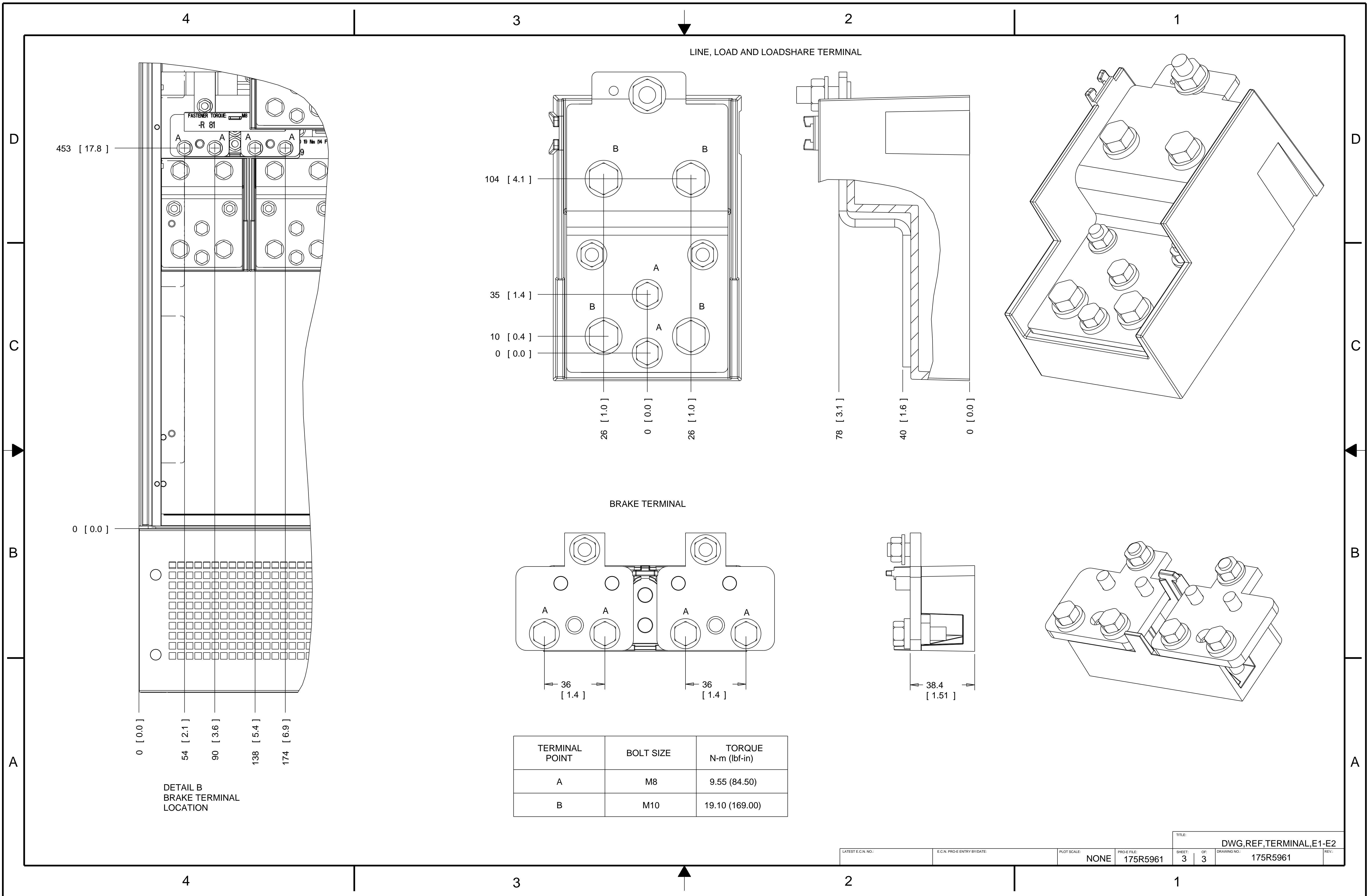
IP21/IP54  
TERMINAL LOCATION - STANDARD

IP21/IP54  
TERMINAL LOCATION - STANDARD

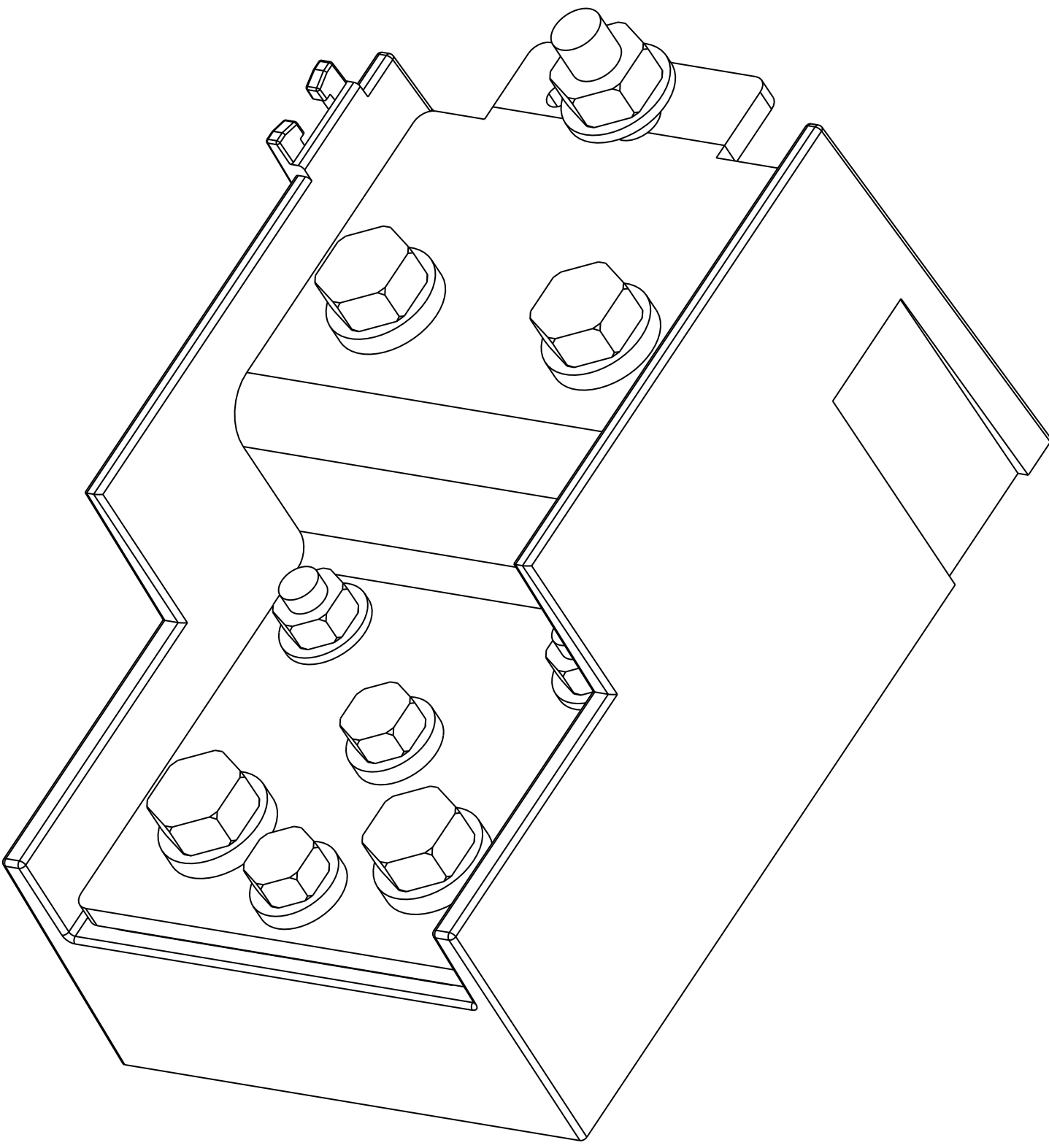
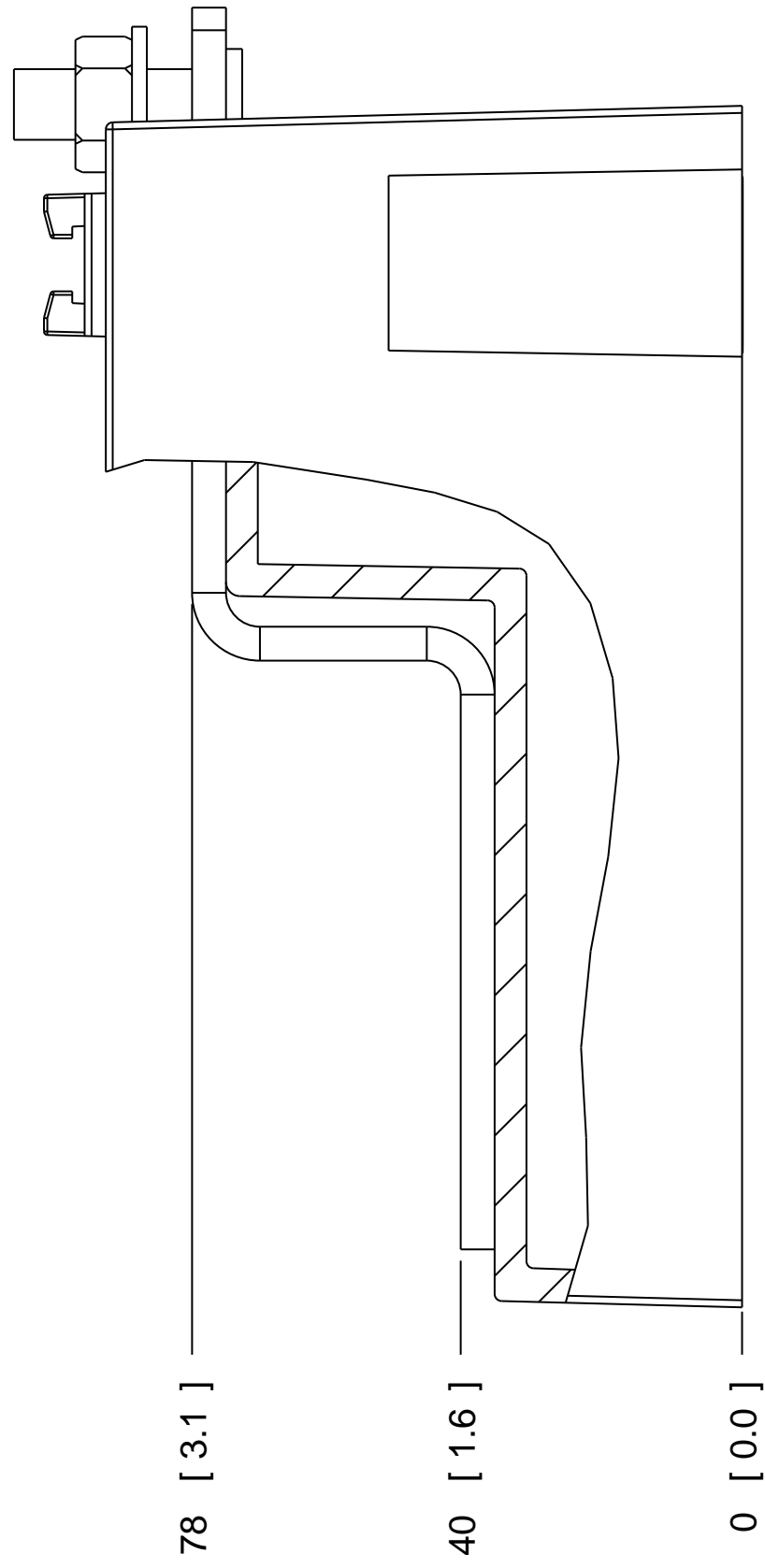
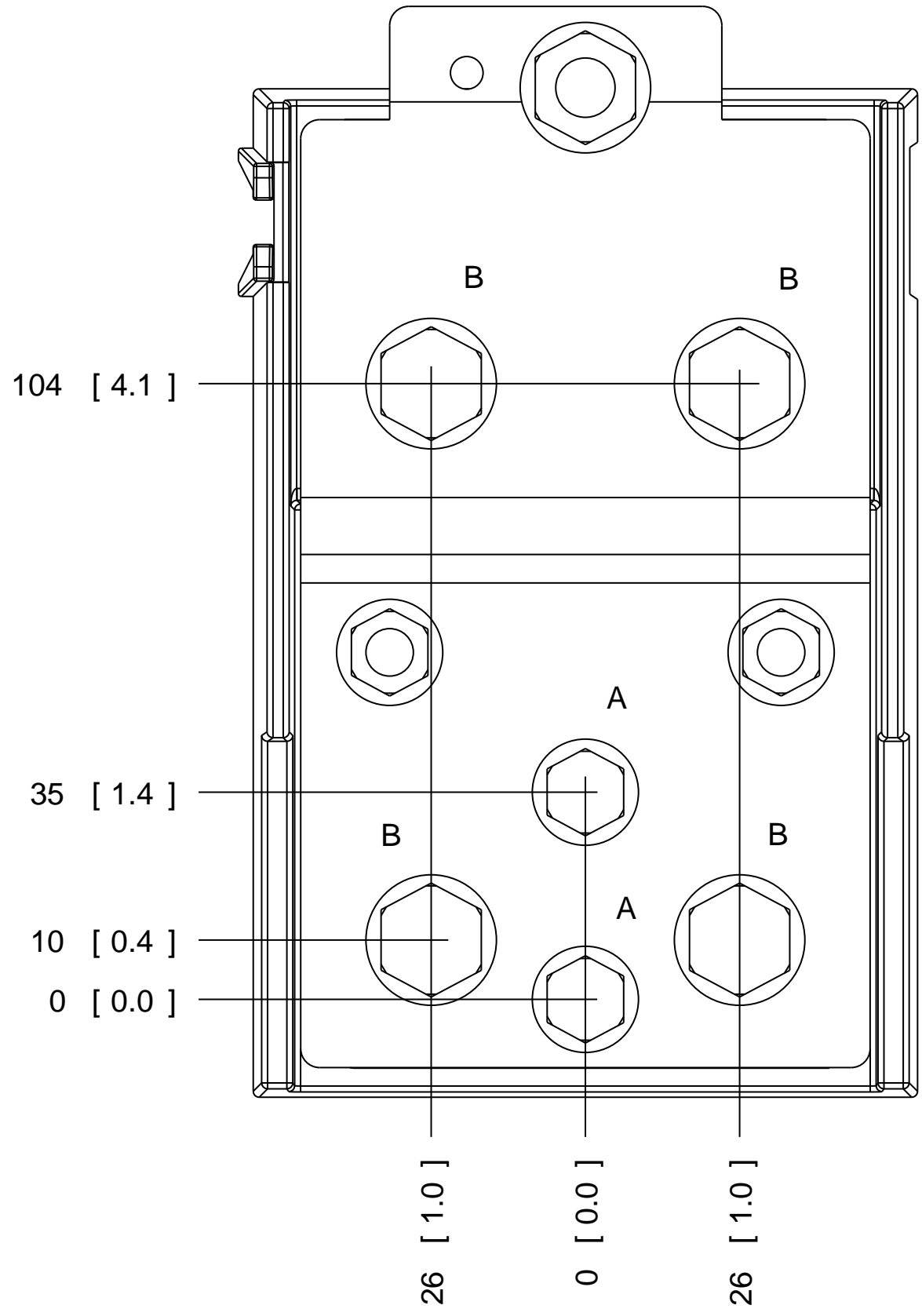
IP21/IP54  
TERMINAL LOCATION - DISCONNECT

IP21/IP54  
TERMINAL LOCATION - DISCONNECT

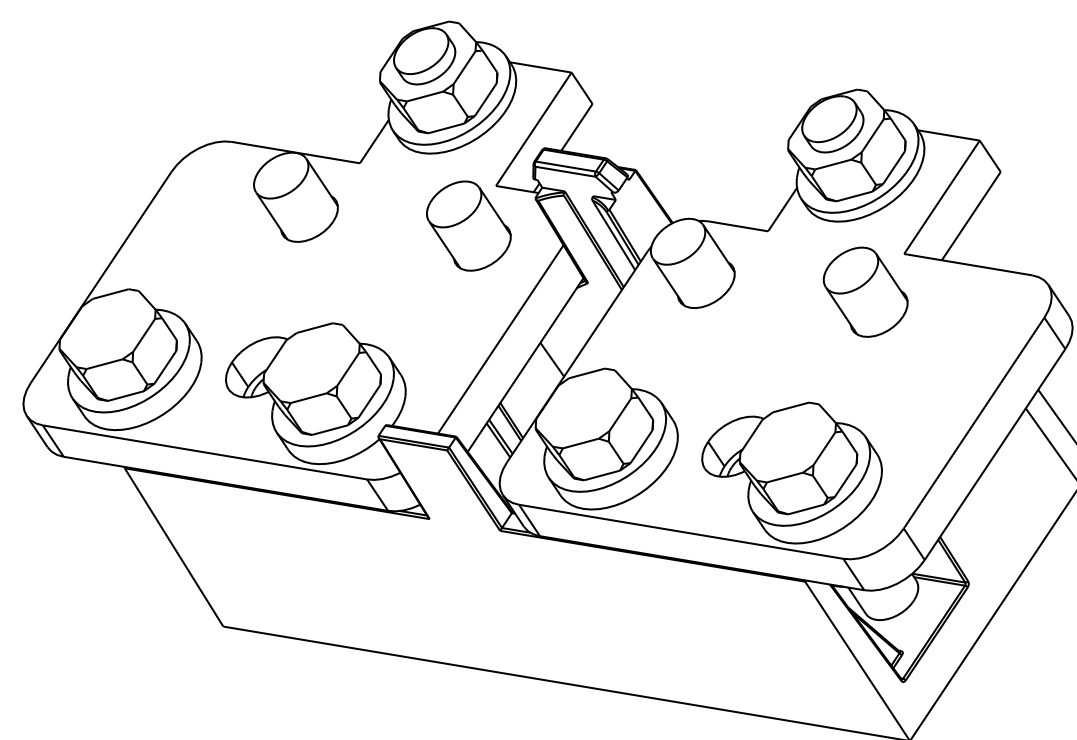
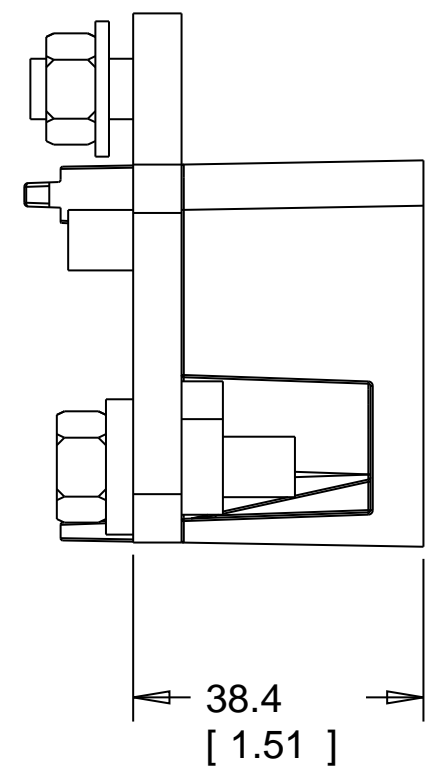
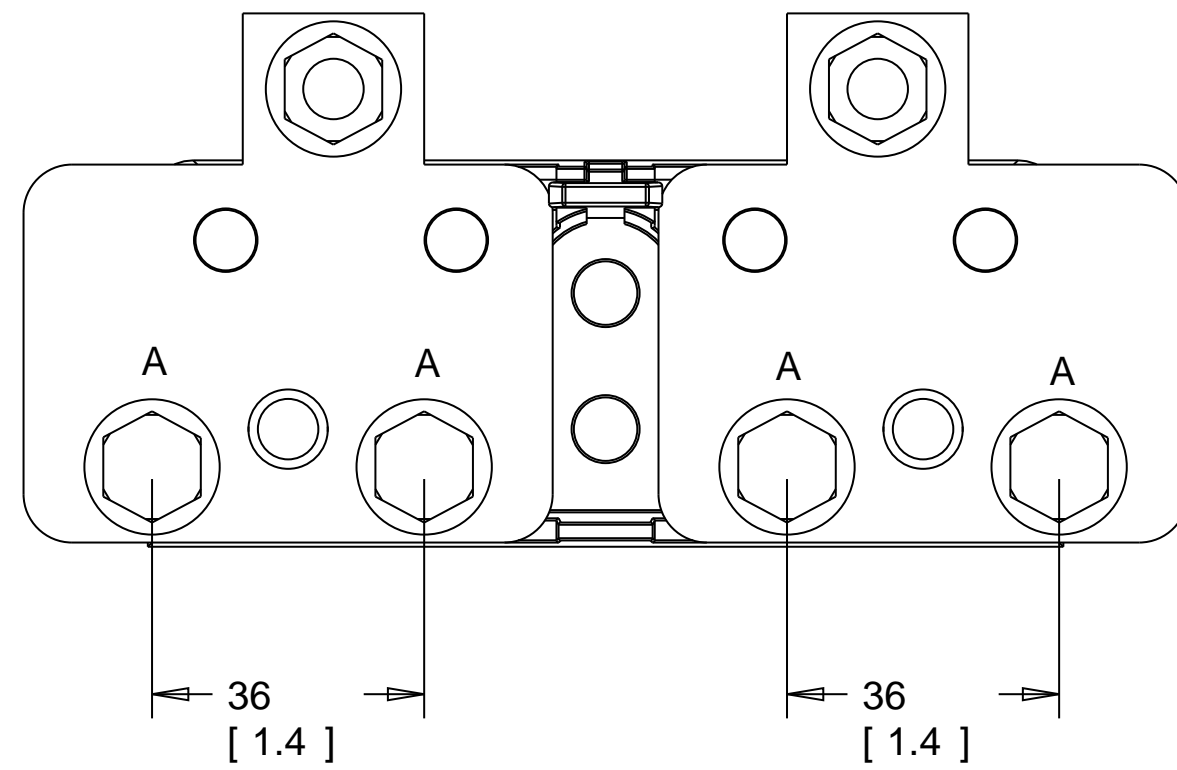
NOTES:  
1. REFER SHEET 3 FOR INDIVIDUAL TERMINAL DETAILS.



LINE, LOAD AND LOADSHARE TERMINAL



BRAKE TERMINAL



TERMINAL POINT	BOLT SIZE	TORQUE N-m (lbf-in)
A	M8	9.55 (84.50)
B	M10	19.10 (169.00)

DETAIL B  
BRAKE TERMINAL  
LOCATION

- 0 [0.0]
- 54 [2.1]
- 90 [3.6]
- 138 [5.4]
- 174 [6.9]

FASTENER TORQUE  
-R 81

453 [17.8]

0 [0.0]