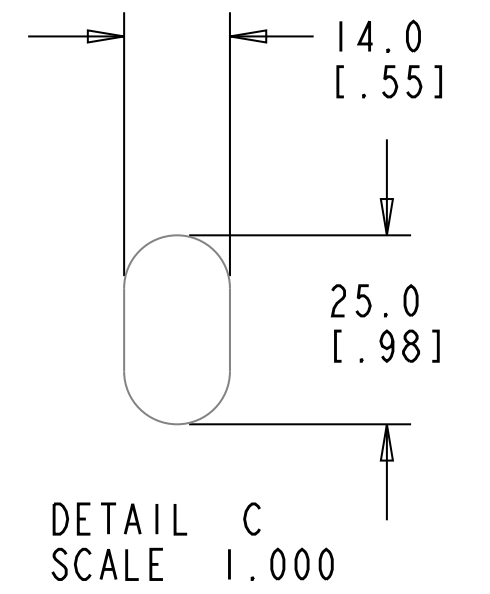
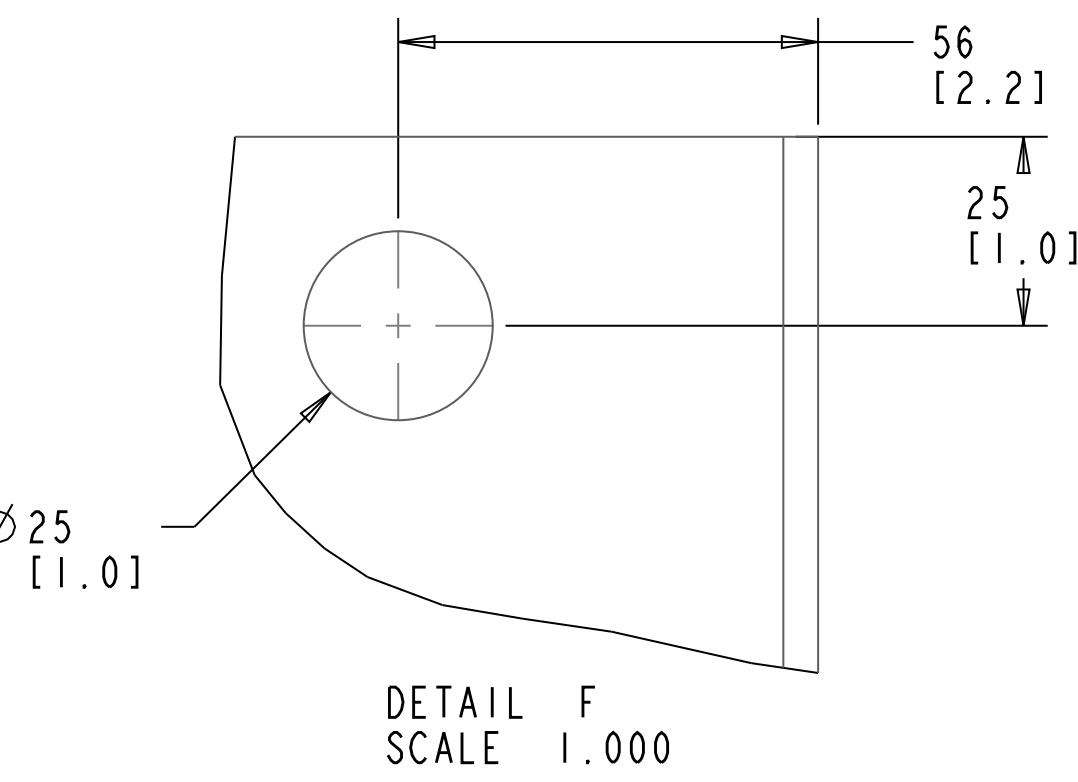
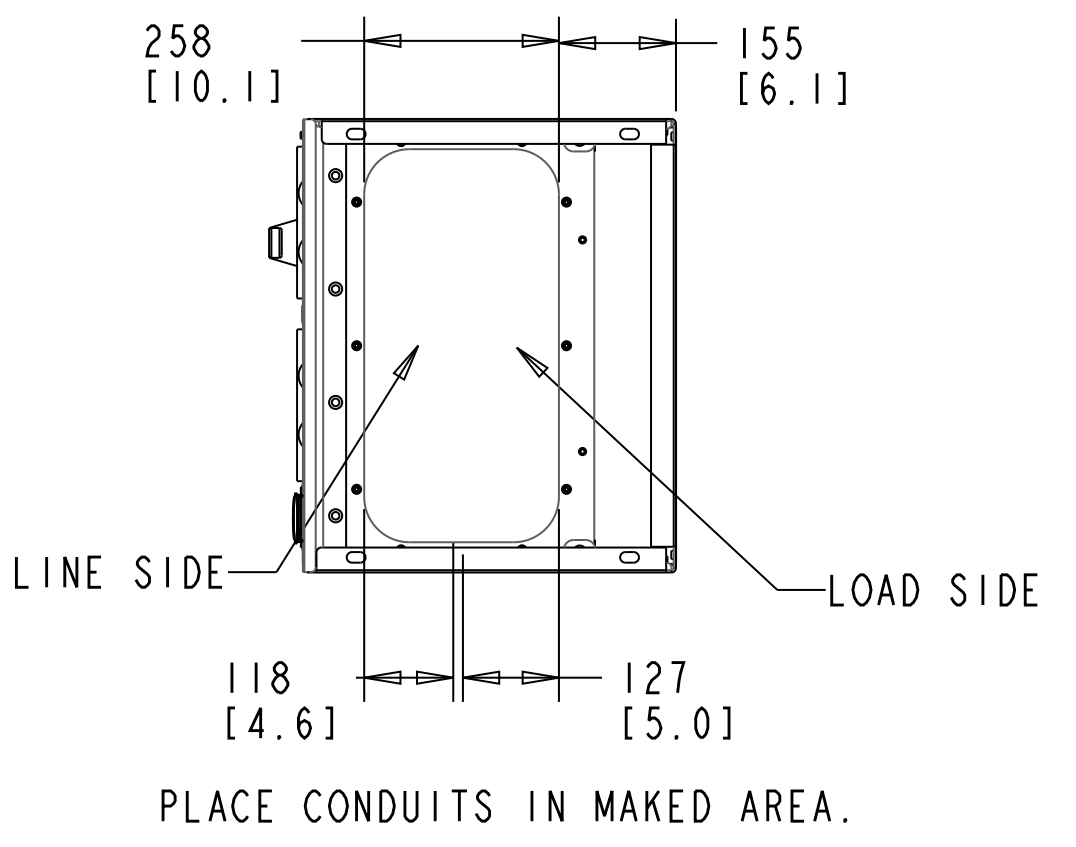
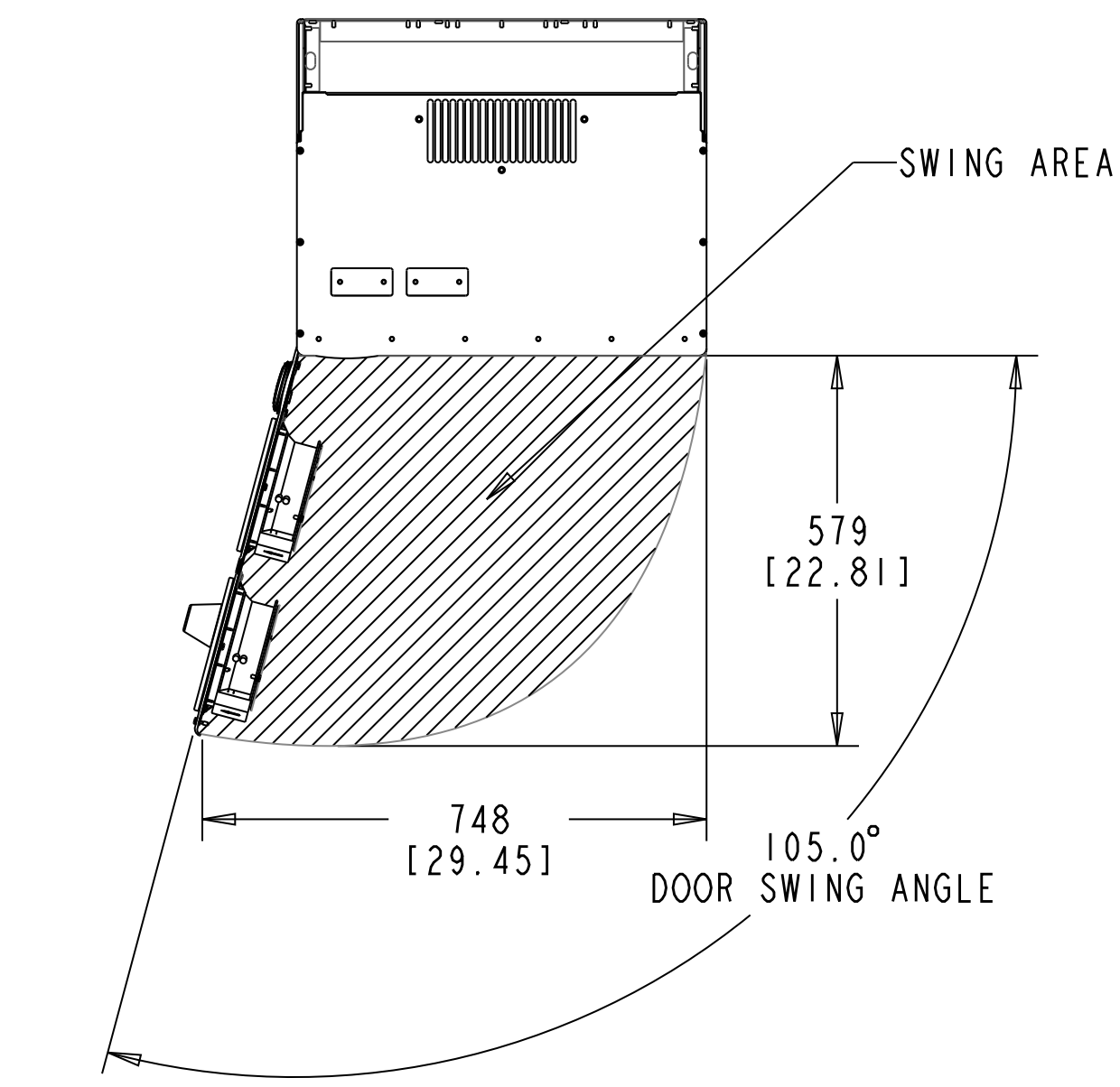
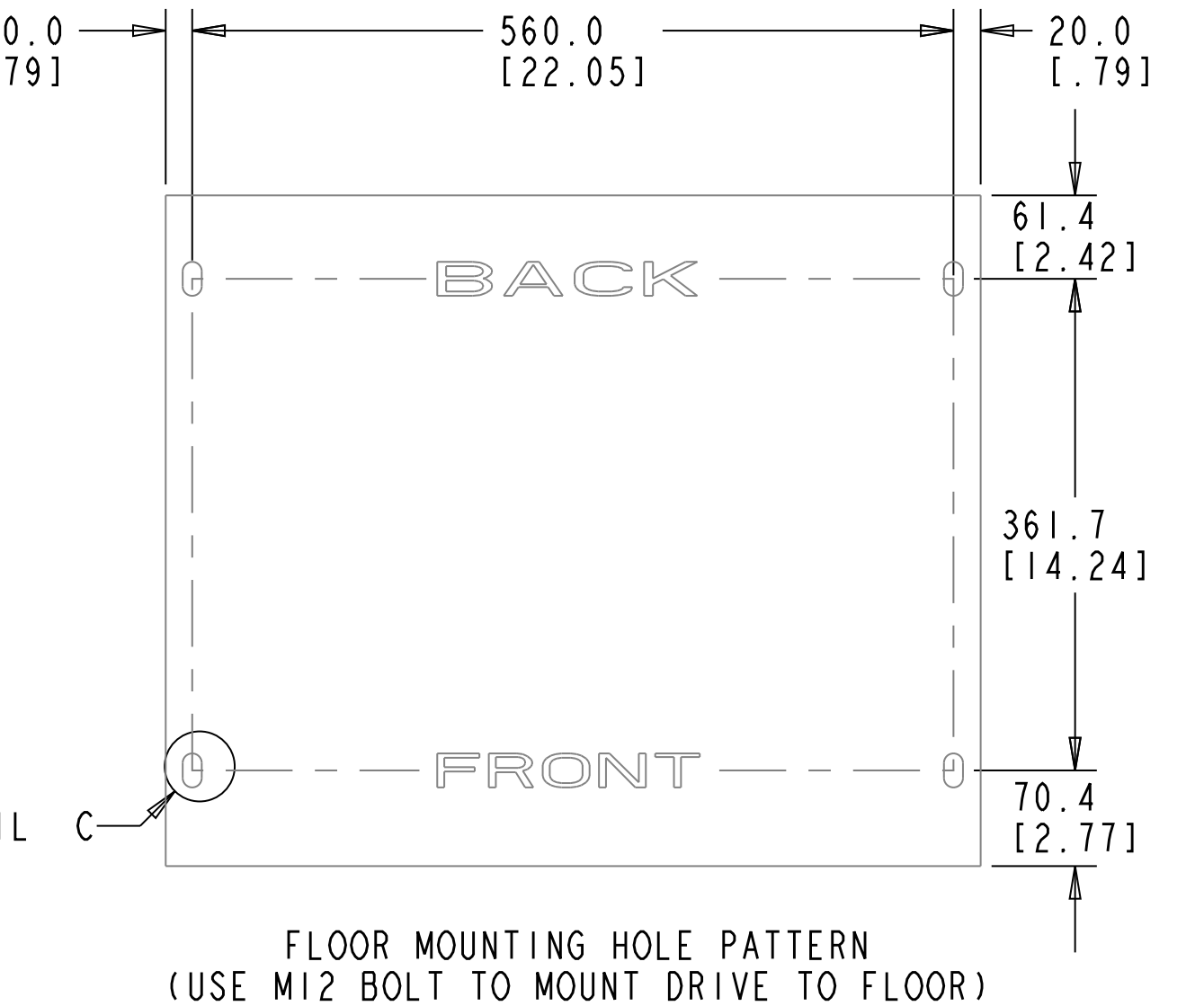
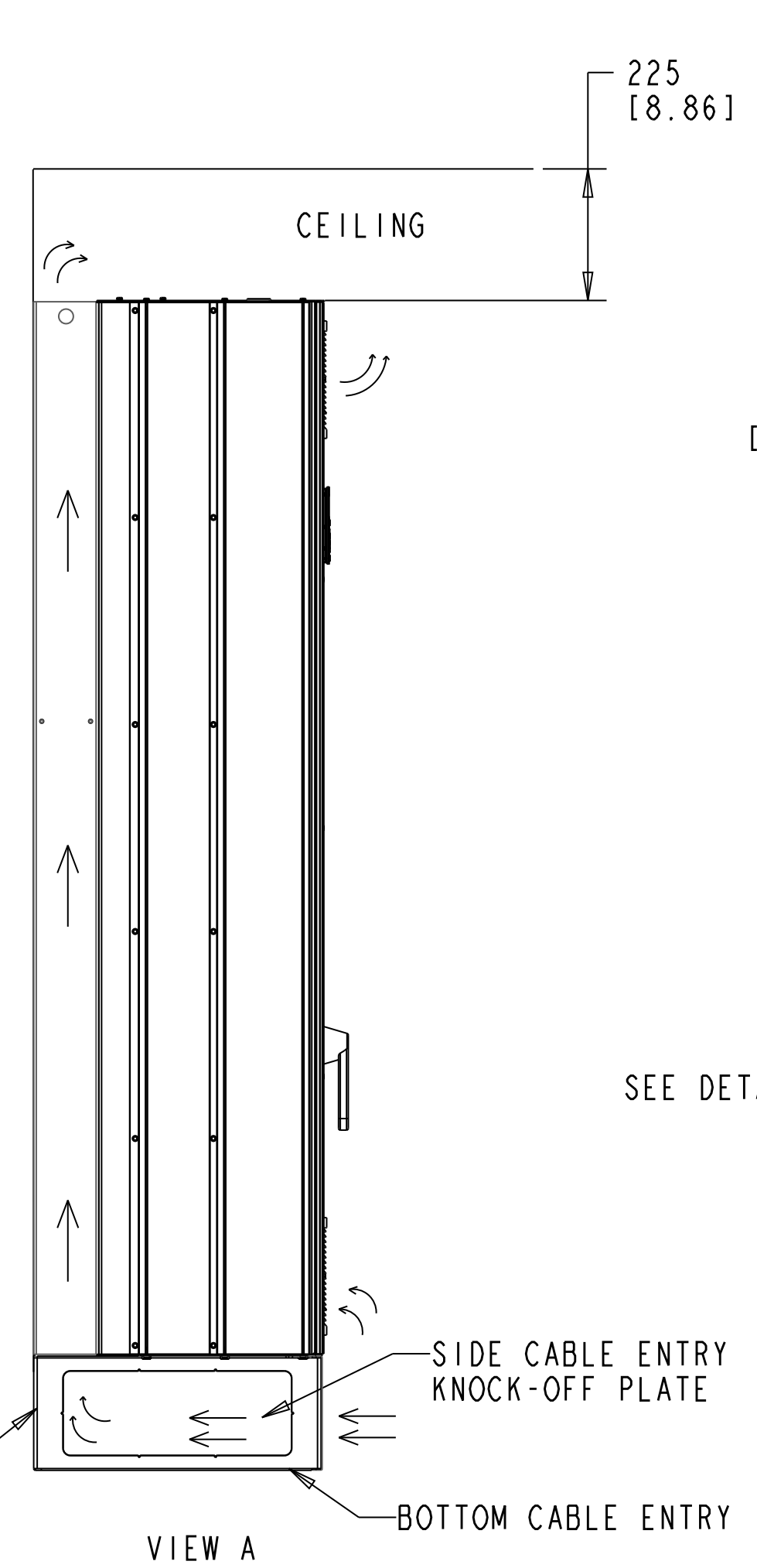
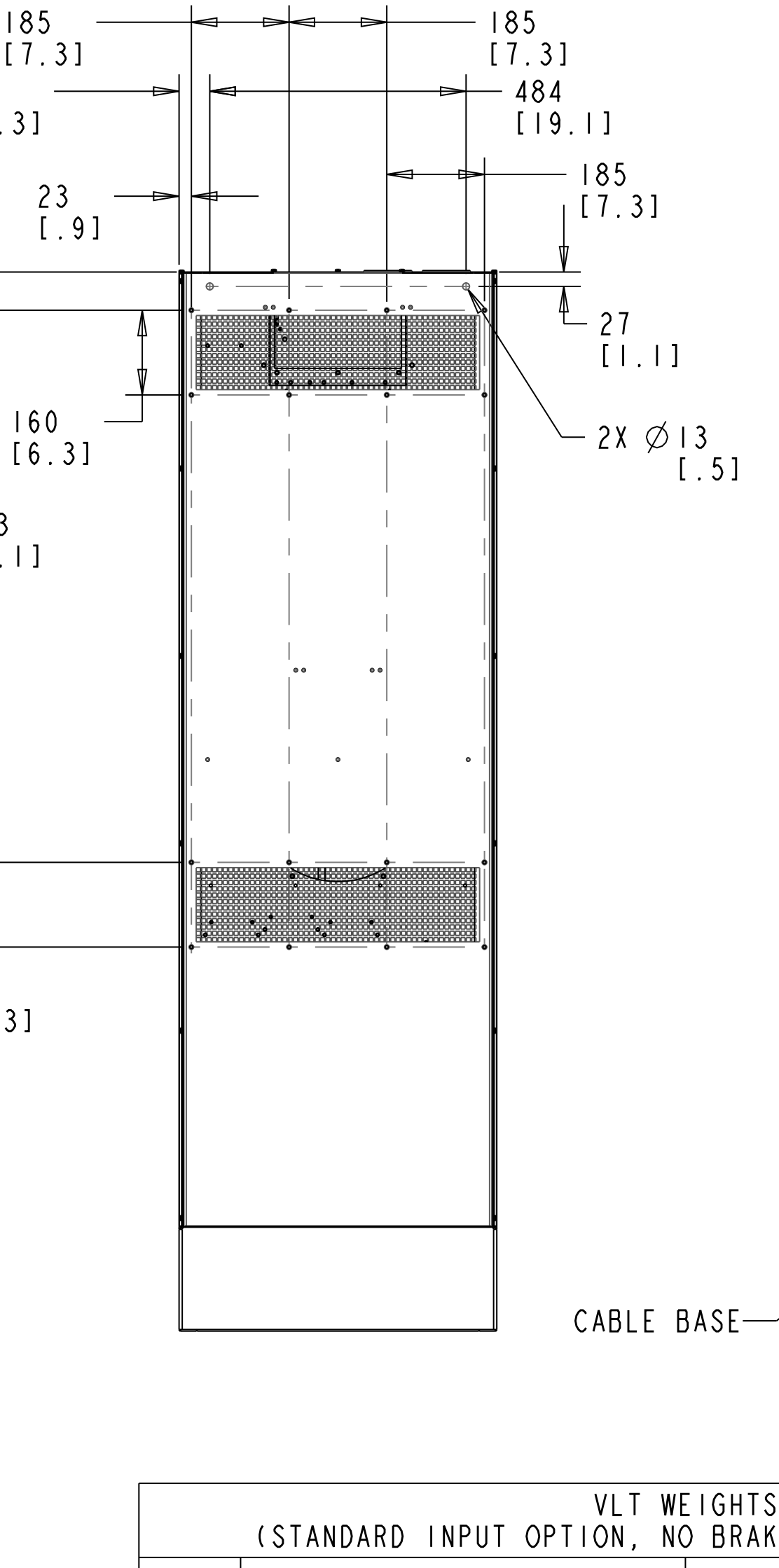
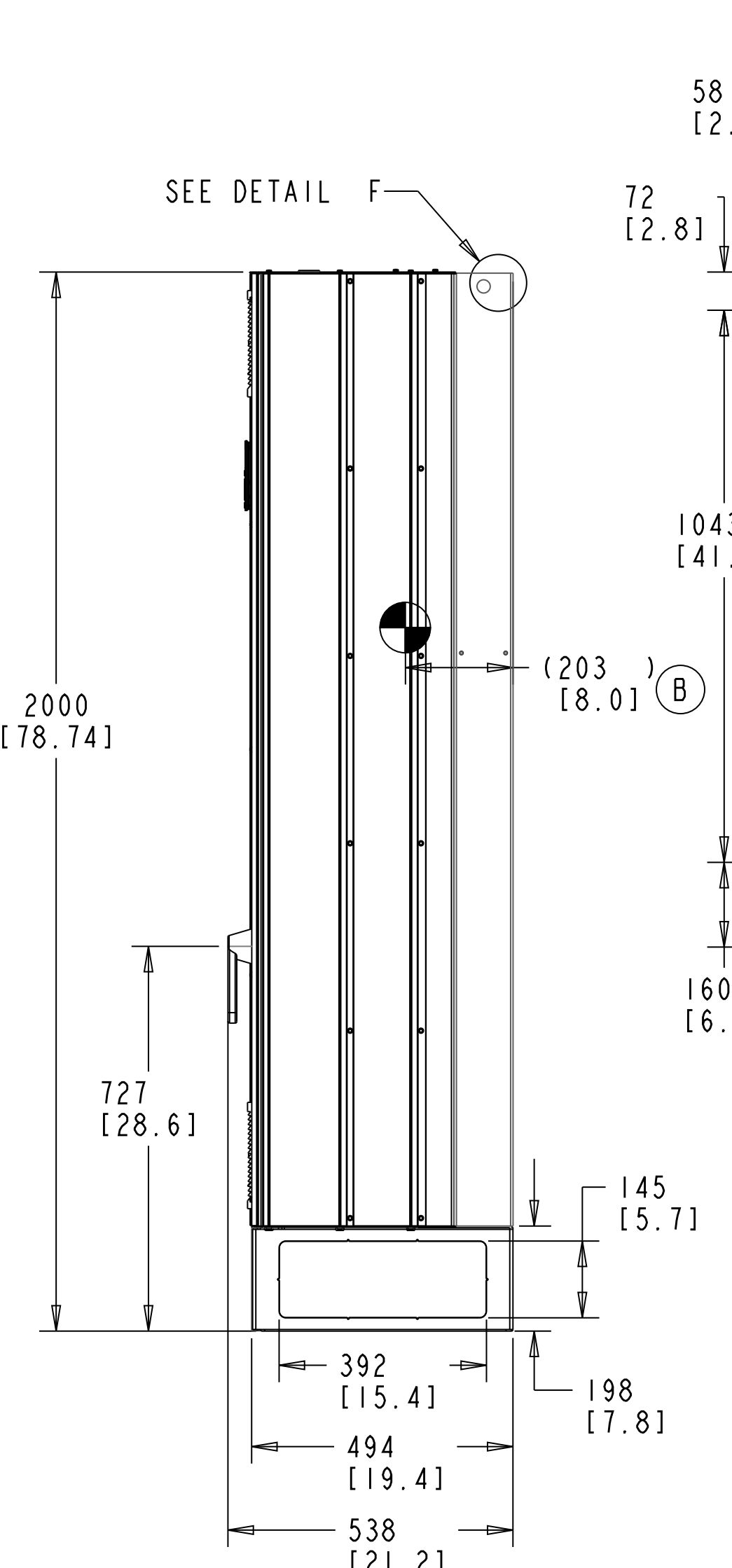
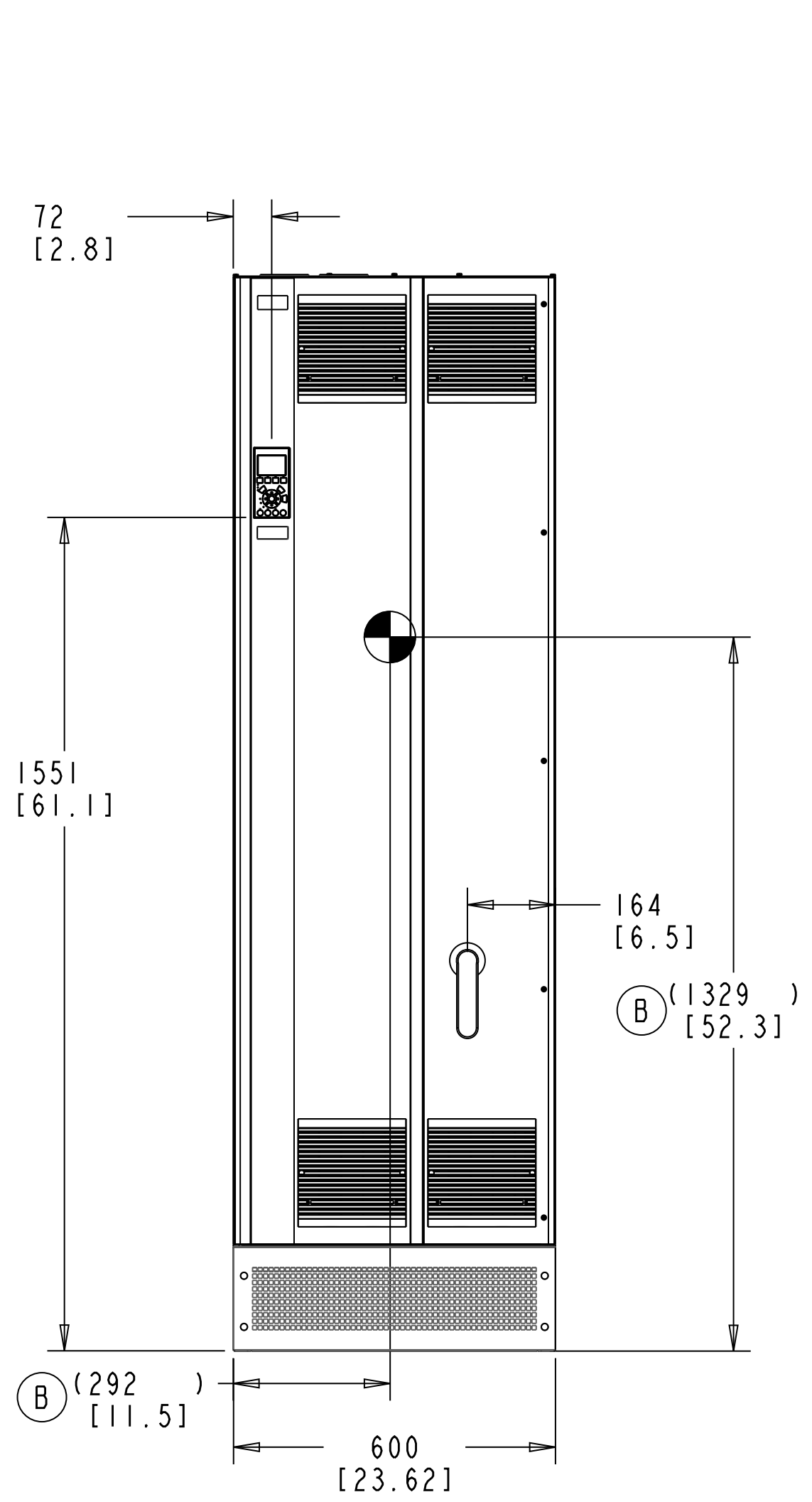


FRAME E1
 (IP21/IP54/UL AND NEMA1/NEMA12)
 250/315 - 400/450 kW (400V) 355/450 - 560/630 kW (690V)
 350/450 - 550/600 HP (460V) 400/450 - 600/650 HP (575V)



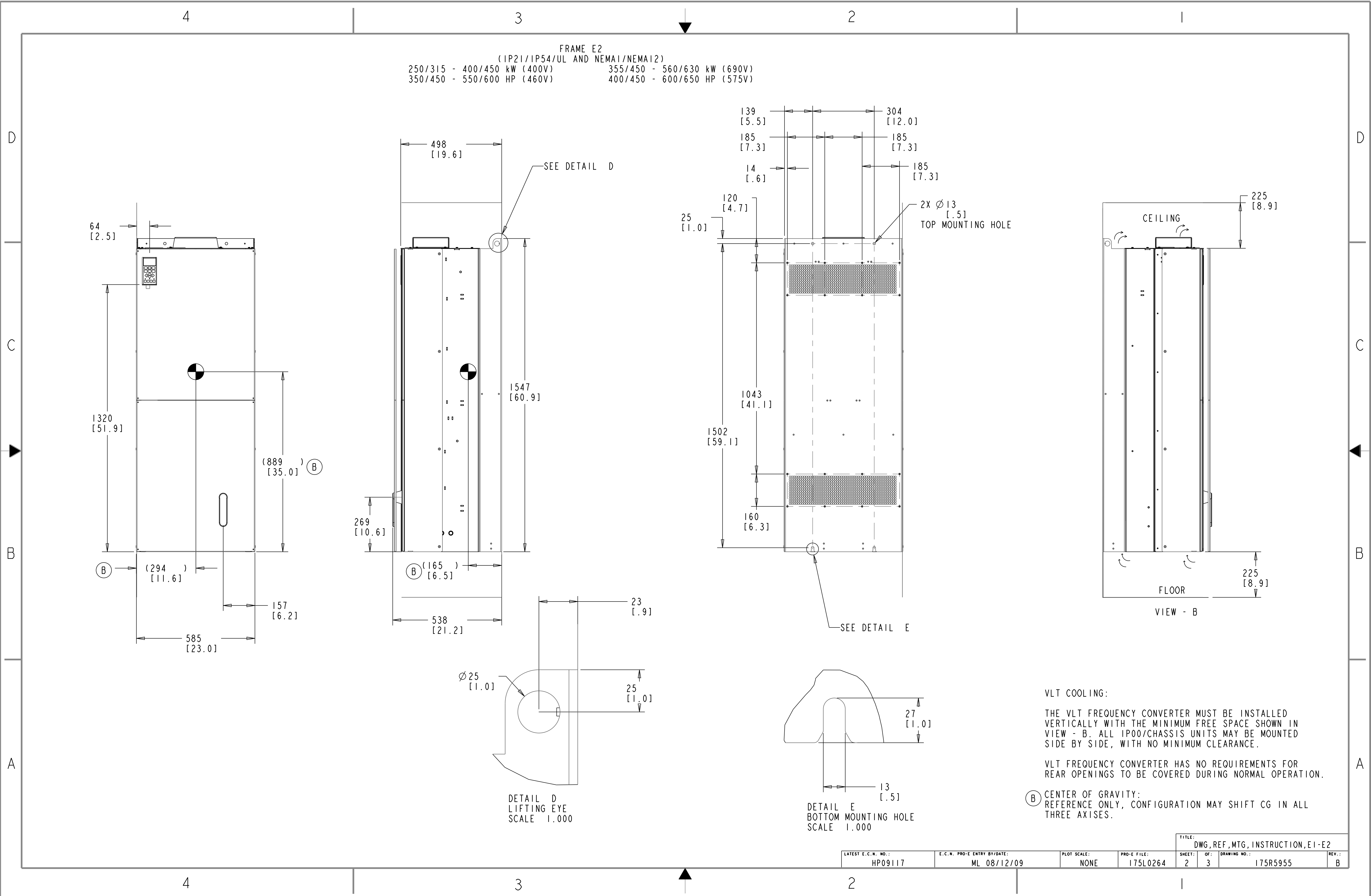
VLT WEIGHTS (STANDARD INPUT OPTION, NO BRAKE AND NO LOADSHARE)			
FRAME	IP00/CHASSIS	FRAME	IP21 AND IP54/UL AND NEMA TYPE 1 AND 12
E2	610 LBS (277.3KG)	E1	689 LBS (313.2 KG)

VLT COOLING:
 THE VLT FREQUENCY CONVERTER MUST BE INSTALLED VERTICALLY WITH THE MINIMUM FREE SPACE SHOWN IN VIEW - A. ALL IP21/UL NEMA TYPE 1 AND IP54/UL NEMA TYPE 12 UNITS MAY BE MOUNTED SIDE BY SIDE, WITH NO MINIMUM CLEARANCE.
 FAILURE TO REMOUNT GLAND PLATE WILL HAVE A NEGATIVE INFLUENCE ON THE UNITS INTERNAL COOLING CAPACITY AND CAN CAUSE TRIP FAULTS.

ⓑ CENTER OF GRAVITY: REFERENCE ONLY, CONFIGURATION MAY SHIFT CG IN ALL THREE AXES.

- NOTICE - THIS DOCUMENT CONTAINS PROPRIETARY INFORMATION OF DANFOSS DRIVES. IT IS LOANED BY DANFOSS DRIVES SUBJECT TO THE CONDITIONS THAT IT AND THE INFORMATION EMBODIED THEREIN SHALL BE USED ONLY FOR RECORD AND REFERENCE PURPOSES. SHALL NOT BE USED OR CAUSED TO BE USED IN ANY WAY PREJUDICIAL TO THE INTERESTS OF DANFOSS DRIVES. SHALL NOT BE REPRODUCED OR COPIED IN WHOLE OR IN PART OR DISCLOSED TO ANYONE WITHOUT THE DIRECT WRITTEN PERMISSION OF DANFOSS DRIVES, AND SHALL BE RETURNED UPON REQUEST.		PRO-E ENTRY BY/DATE: MG 08/15/06	CHECKED BY/DATE:	DANFOSS DRIVES 4401 W. BELL SCHOOL RD. LOVES PARK, ILLINOIS 61111 USA TEL: 639-8400 FAX: 618151-639-8000
	DESIGNED BY/DATE: MG 08/15/06	MFG. APPROVAL BY/DATE:	TITLE: DWG, REF, MTG, INSTRUCTION, E1-E2	
LATEST E.C.N. NO.: HP09117	E.C.N. PRO-E ENTRY BY/DATE: ML 08/12/09	PLOT SCALE: NONE	PRO-E FILE: 175L0264	SHEET: OF: 1 3
				DRAWING NO.: 175R5955
				REV.: B

FRAME E2
 (IP21/IP54/UL AND NEMA1/NEMA12)
 250/315 - 400/450 kW (400V) 355/450 - 560/630 kW (690V)
 350/450 - 550/600 HP (460V) 400/450 - 600/650 HP (575V)



VLT COOLING:
 THE VLT FREQUENCY CONVERTER MUST BE INSTALLED VERTICALLY WITH THE MINIMUM FREE SPACE SHOWN IN VIEW - B. ALL IP00/CHASSIS UNITS MAY BE MOUNTED SIDE BY SIDE, WITH NO MINIMUM CLEARANCE.

VLT FREQUENCY CONVERTER HAS NO REQUIREMENTS FOR REAR OPENINGS TO BE COVERED DURING NORMAL OPERATION.

(B) CENTER OF GRAVITY: REFERENCE ONLY, CONFIGURATION MAY SHIFT CG IN ALL THREE AXES.

TITLE: DWG, REF, MTG, INSTRUCTION, E1-E2									
LATEST E.C.N. NO.:	E.C.N. PRO-E ENTRY BY/DATE:	PLOT SCALE:	PRO-E FILE:	SHEET:	OF:	DRAWING NO.:	REV.:		
HP09117	ML 08/12/09	NONE	175L0264	2	3	175R5955	B		

4

3

2

1

D

D

C

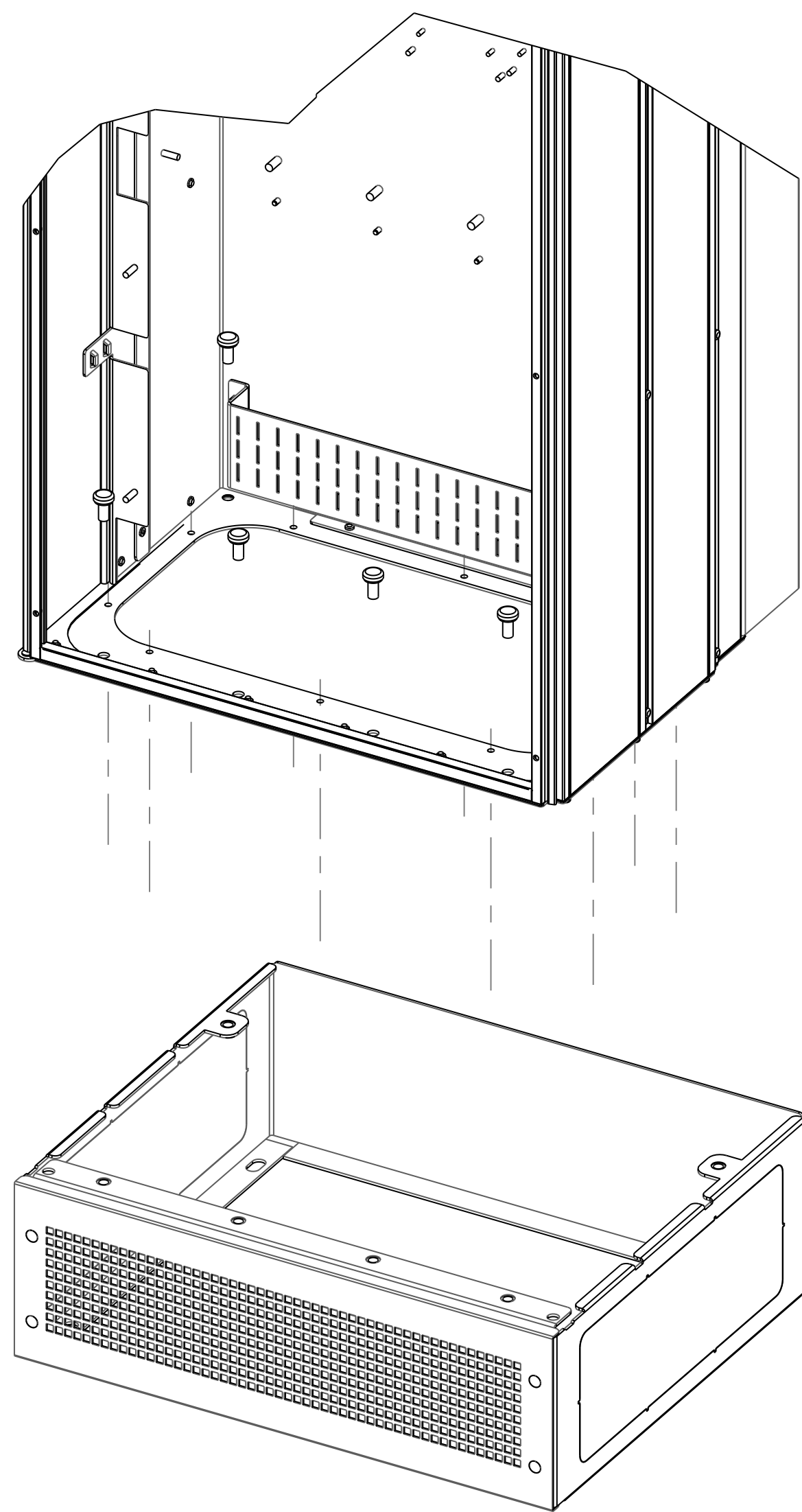
C

B

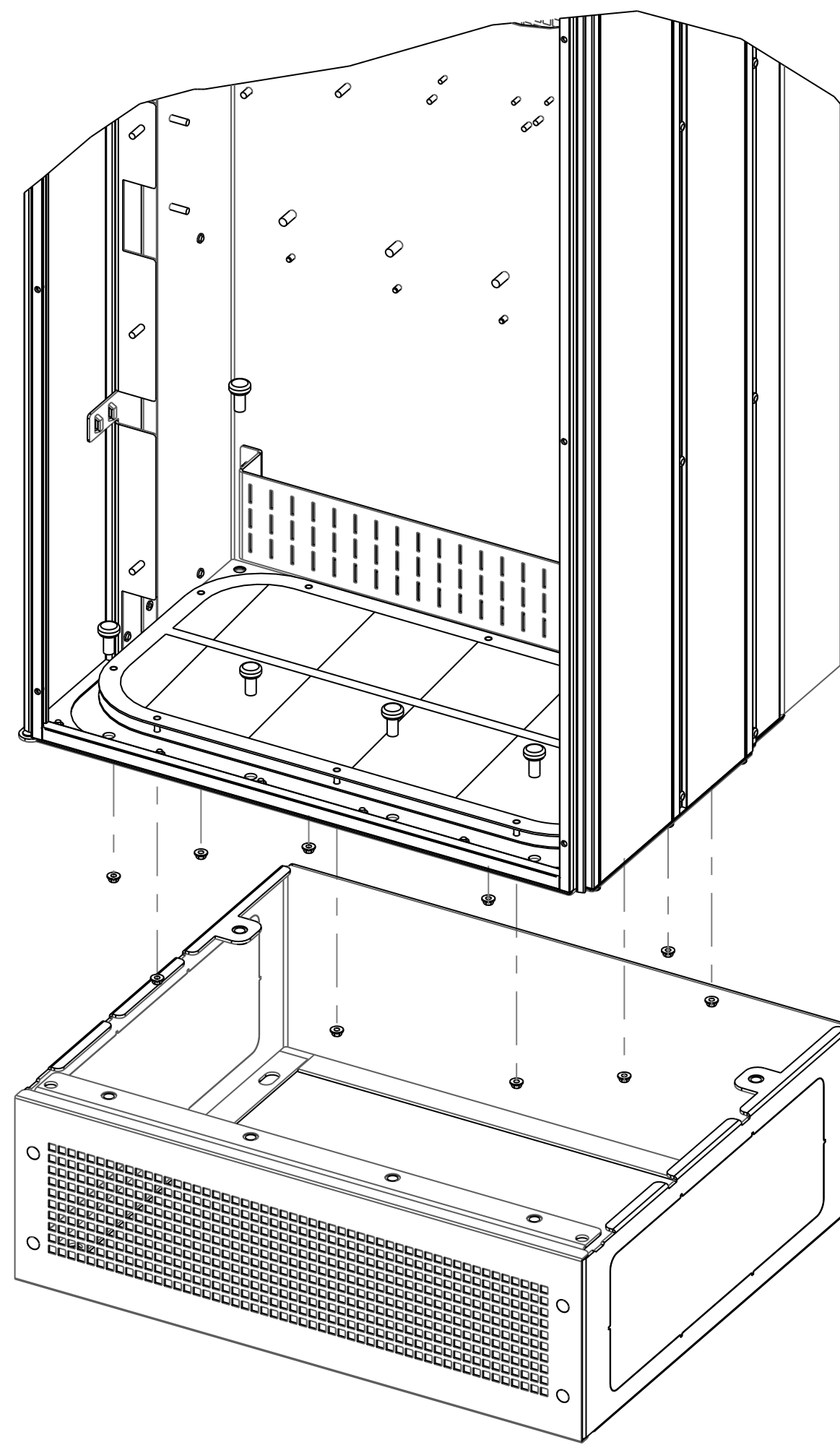
B

A

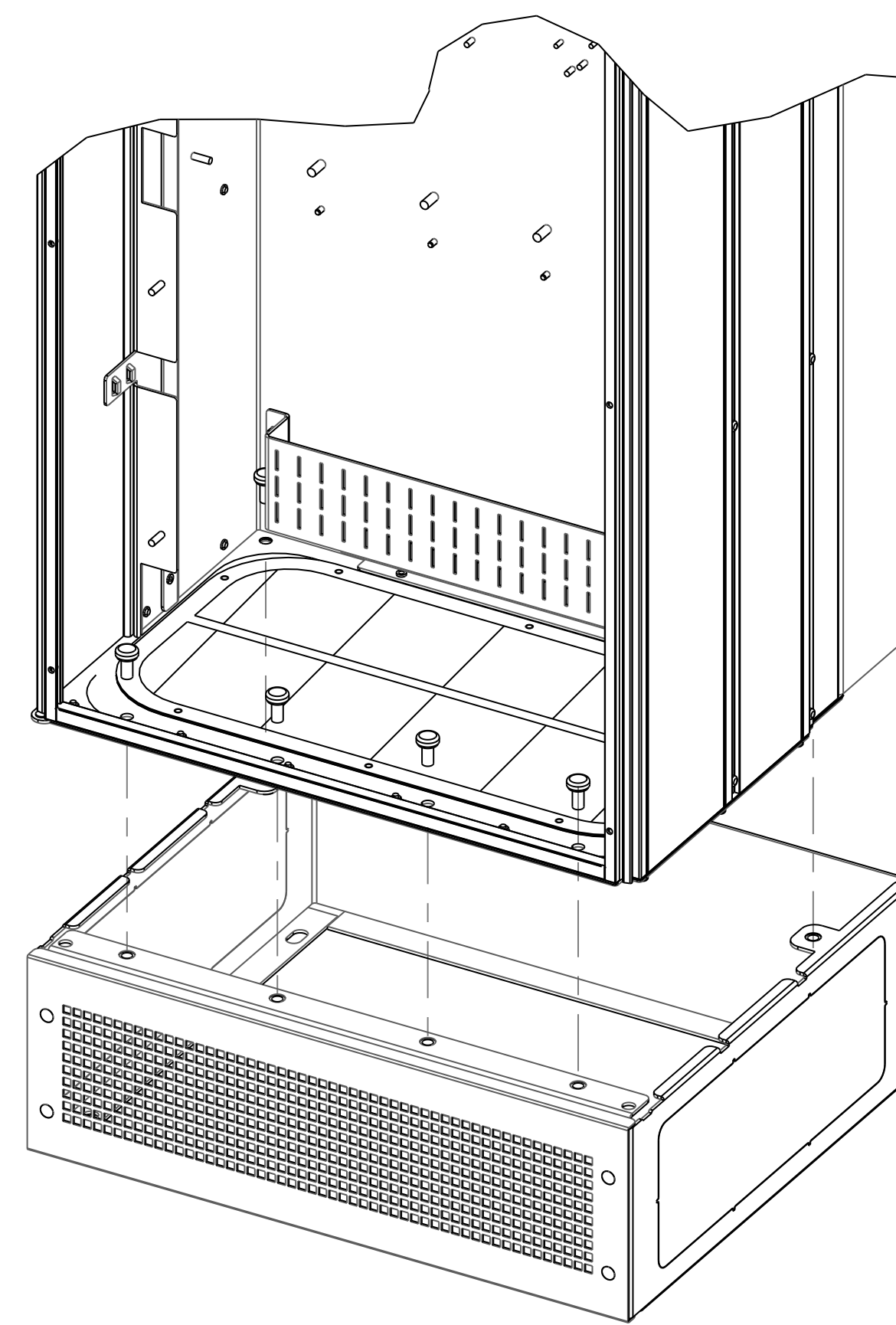
A



GLAND PLATE MOUNTED FROM OUTSIDE



GLAND PLATE MOUNTED FROM INSIDE



ENCLOSURE MOUNTING ON PEDESTAL

4

3

2

1

LATEST E.C.N. NO.:		E.C.N. PRO-E ENTRY BY/DATE:		PLOT SCALE:		PRO-E FILE:		SHEET: OF:		DRAWING NO.:		REV.:	
HP09117		ML 08/12/09		NONE		175L0264		3 3		175R5955		B	

TITLE: DWG, REF, MTG, INSTRUCTION, E1-E2