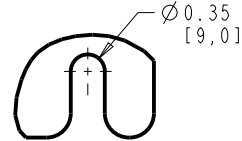
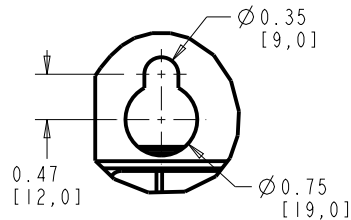
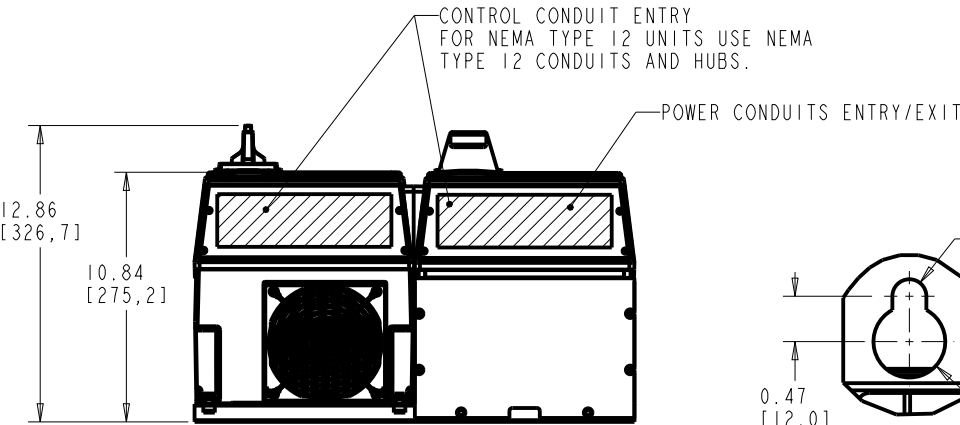
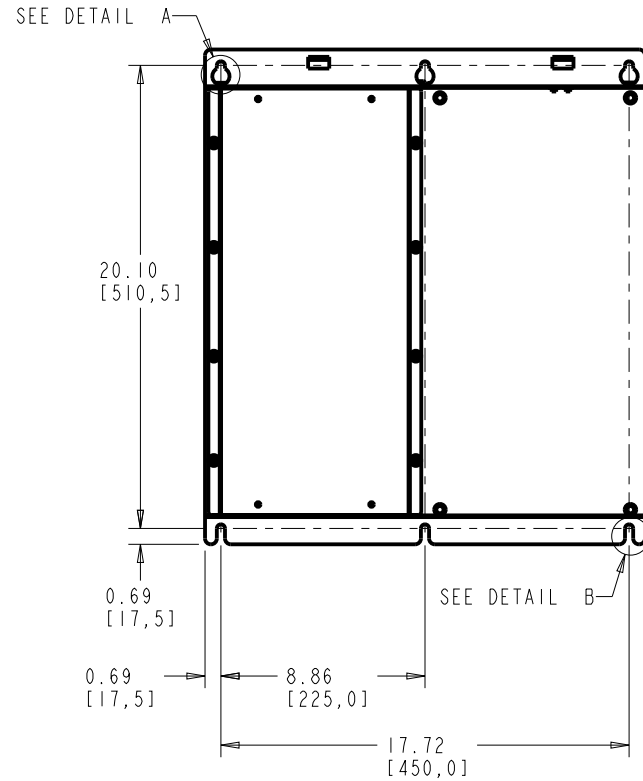
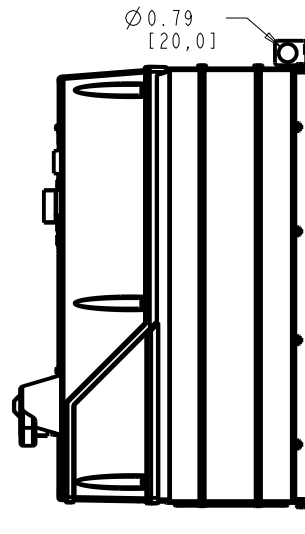
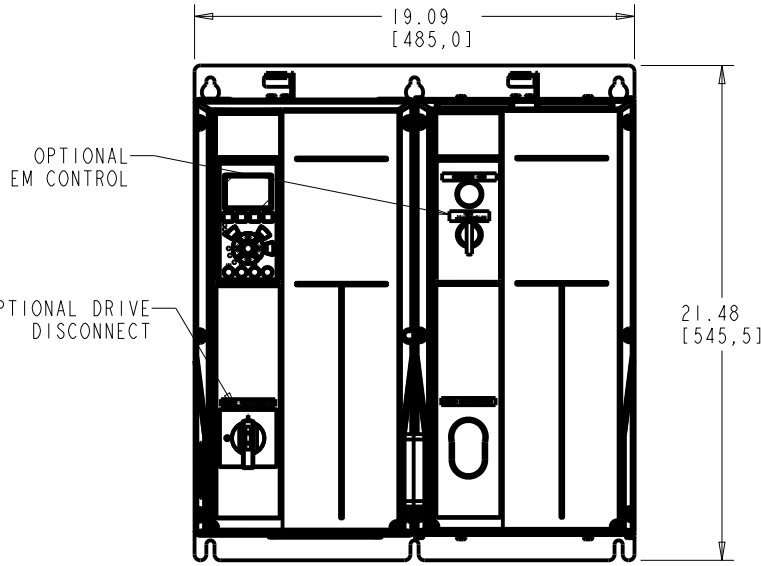


4

3

2

1



DETAIL A

DETAIL B

UNIT APPROXIMATE WEIGHT: 105 Lbs [48 Kg]

CLEARANCE REQUIREMENT FOR AIR FLOW COOLING:

THE UNIT MUST BE INSTALLED VERTICALLY WITH THE MINIMUM CLEARANCE OF 3.94" [100.0mm] ON THE TOP AND BOTTOM. ALL UL NEMA TYPE 1/1P21 AND NEMA TYPE 12/1P54 UNITS MAY BE MOUNTED SIDE BY SIDE WITH NO MINIMUM SIDE CLEARANCE.

FRAME SIZE BI		
VOLTAGE	HP	KW
208/230	7.5-10	5.5-7.5
460/600	15-25	11-18.5

- NOTICE -		PRO-E ENTRY BY/DATE: KD 2/21/07	CHECKED BY/DATE:	Danfoss	DANFOSS DRIVES 4401 N. BELL SCHOOL RD., LOVES PARK, ILLINOIS 61111 USA (815) 639-9600 FAX (815) 639-9000	
THIS DOCUMENT CONTAINS PROPRIETARY INFORMATION OF DANFOSS DRIVES. IT IS LOANED BY DANFOSS DRIVES SUBJECT TO THE CONDITIONS THAT IT AND THE INFORMATION EMBODIED THEREIN SHALL BE USED ONLY FOR RECORD AND REFERENCE PURPOSES, SHALL NOT BE USED OR CAUSED TO BE USED IN ANY WAY PREJUDICIAL TO THE INTERESTS OF DANFOSS DRIVES, SHALL NOT BE REPRODUCED OR COPIED IN WHOLE OR IN PART OR DISCLOSED TO ANYONE WITHOUT THE DIRECT WRITTEN PERMISSION OF DANFOSS DRIVES, AND SHALL BE RETURNED UPON REQUEST.		DESIGNED BY/DATE: KD 2/21/07	MFG. APPROVAL BY/DATE:			
		LATEST E.C.N. NO.: SP10032	E.C.N. PRO-E ENTRY BY/DATE: SAK 04/26/10	APPROVAL:	ENG. APPROVAL BY/DATE:	TITLE: DWG, REF, SUBMITTAL, BI T2
		PLOT SCALE: NONE	PRO-E FILE: APU_BI_MAIN	SHEET: 1	OF: 1	DRAWING NO.: 176U8472
						REV.: C

4

3

2

1