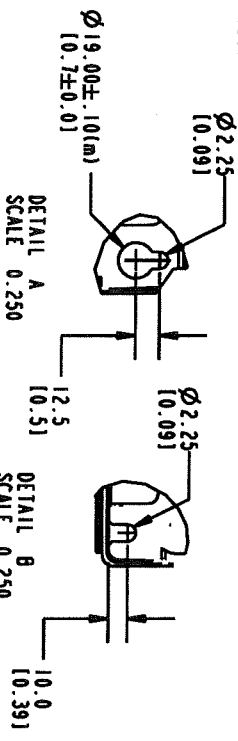


1) PLACE CONDUITS IN MARKED AREA.  
2) FOR NEMA TYPE 12 UNIT USE NEMA TYPE 12 CONDUITS AND HUBS.



FRAME SIZE C1		
VOLTAGE	HP	KW
208/230	25-40	18.5-30
460/600	50-75	37-55

UNIT COOLING:  
THE UNIT MUST BE INSTALLED VERTICALLY WITH THE MINIMUM FREE SPACE. ALL IP21/UL NEMA TYPE 1 AND IP54/NEMA TYPE 12 UNITS MAY BE MOUNTED SIDE BY SIDE WITH NO MINIMUM CLEARANCE.

NOTICE

THIS DOCUMENT CONTAINS PROPRIETARY INFORMATION OF DANFOSS DRIVES. IT IS LOANED BY DANFOSS DRIVES SUBJECT TO THE CONDITIONS THAT IT AND THE INFORMATION EMPLOYED THEREIN SHALL BE USED ONLY FOR RECORD AND REFERENCE PURPOSES. SHALL NOT BE REPRODUCED OR CAUSED TO BE REPRODUCED IN ANY MANNER WITHOUT THE WRITTEN PERMISSION OF DANFOSS DRIVES. SHALL NOT BE REPRODUCED OR COPIED IN WHOLE OR IN PART OR DISCLOSED TO ANY OTHER PERSON WITHOUT THE WRITTEN PERMISSION OF DANFOSS DRIVES. AND SHALL BE RETURNED UPON REQUEST.

LATEST E.C.N. NO.:	E.C.N. PROJ. ENTRY BY/DATE:	PROJ. ENTRY BY/DATE:	DESIGNED BY/DATE:	CHECKED BY/DATE:	TITLE:	SHEETS:	OF:	DRAWING NO.:	REV.:
SP08035	DK 5/7/08	JM 08/01/06	JM 08/01/06	05/09/08	DWG. REF. SUBMITTAL, C1-TIER 1	1	1	17608477	C
PLOT SCALE: NONE		APPROVAL:		DWG. APPROVAL BY/DATE:		DATE:			
				5/9/08					
				P404.C1.650					
				DANFOSS DRIVES					