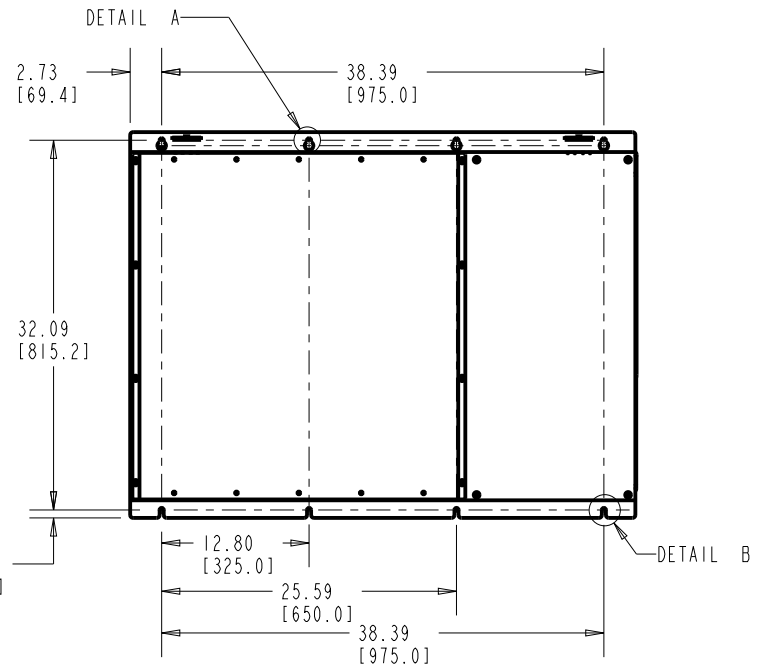
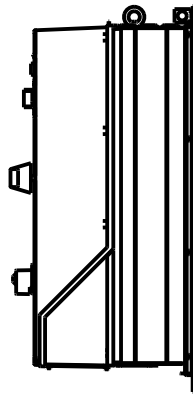
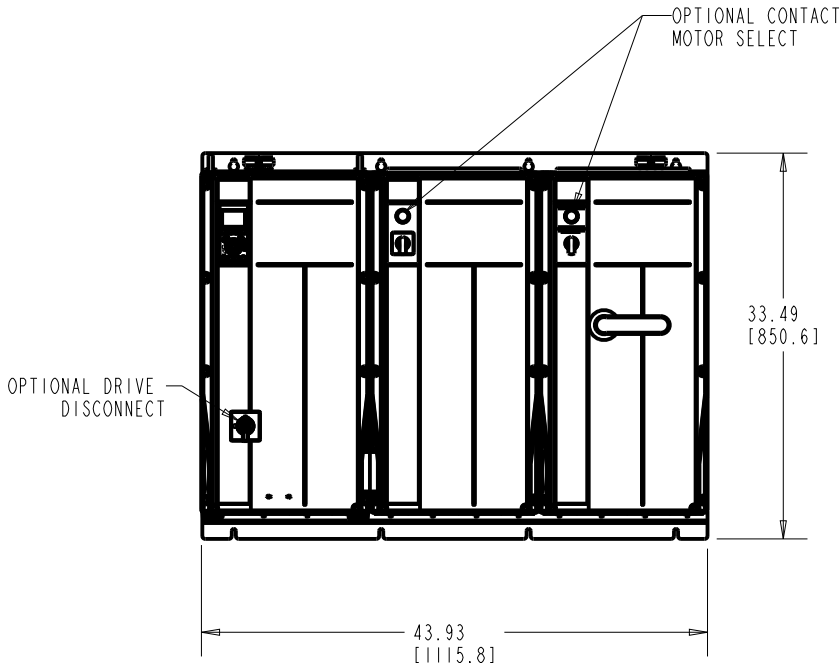


4

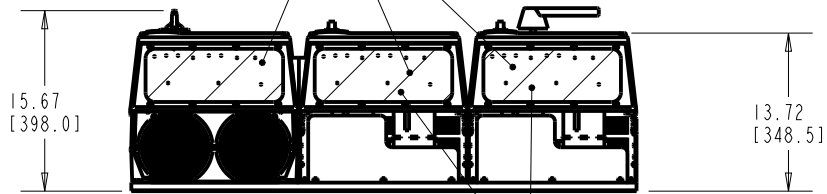
3

2

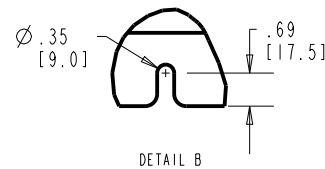
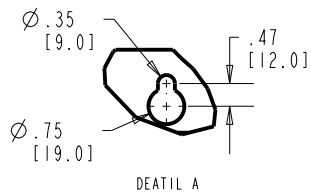
1



CONTROL CONDUIT ENTRY FOR NEMA TYPE 12 UNIT USE NEMA TYPE 12 CONDUITS AND HUB.



POWER CONDUIT ENTRY/EXIT USER OPTION DEPENDANT



FRAME SIZE C2		
VOLTAGE	HP	KW
208/230	40-60	30-45
460/600	100-125	75-90

CLEARANCE REQUIREMENT FOR AIR FLOW COOLING:

THE UNIT MUST BE INSTALLED VERTICALLY WITH THE MINIMUM CLEARANCE OF 8.86" [225.0mm] ON THE TOP AND BOTTOM. ALL UL NEMA TYPE 1/1P21 AND TYPE 12/IP54 UNITS MAY BE MOUNTED SIDE BY SIDE WITH NO MINIMUM SIDE CLEARANCE.

UNIT APPROXIMATE WEIGHT: 285.0 Lbs [129 Kg]

- NOTICE -

THIS DOCUMENT CONTAINS PROPRIETARY INFORMATION OF DANFOSS DRIVES. IT IS LOANED BY DANFOSS DRIVES SUBJECT TO THE CONDITIONS THAT IT AND THE INFORMATION EMBODIED THEREIN SHALL BE USED ONLY FOR RECORD AND REFERENCE PURPOSES, SHALL NOT BE USED OR CAUSED TO BE USED IN ANY WAY PREJUDICIAL TO THE INTERESTS OF DANFOSS DRIVES, SHALL NOT BE REPRODUCED OR COPIED IN WHOLE OR IN PART OR DISCLOSED TO ANYONE WITHOUT THE DIRECT WRITTEN PERMISSION OF DANFOSS DRIVES, AND SHALL BE RETURNED UPON REQUEST.

PRO-E ENTRY BY/DATE:  
JM 11/29/06

CHECKED BY/DATE:

DESIGNED BY/DATE:

MFG. APPROVAL BY/DATE:

APPROVAL:

ENG. APPROVAL BY/DATE:

DANFOSS DRIVES  
4401 N. BELL SCHOOL RD. LOVES PARK, ILLINOIS 61111 USA  
(615) 639-9800 FAX (615) 639-9800

TITLE:  
DWG, REF, SUBMITTAL, C2 - TIER 3

LATEST E.C.N. NO.:

SPI0032

E.C.N. PRO-E ENTRY BY/DATE:

SAK 03/30/10

PLOT SCALE:

NONE

PRO-E FILE:

176U8482

SHEET: OF:

DRAWING NO.:

176U8482

REV.:

B

4

3

2

1