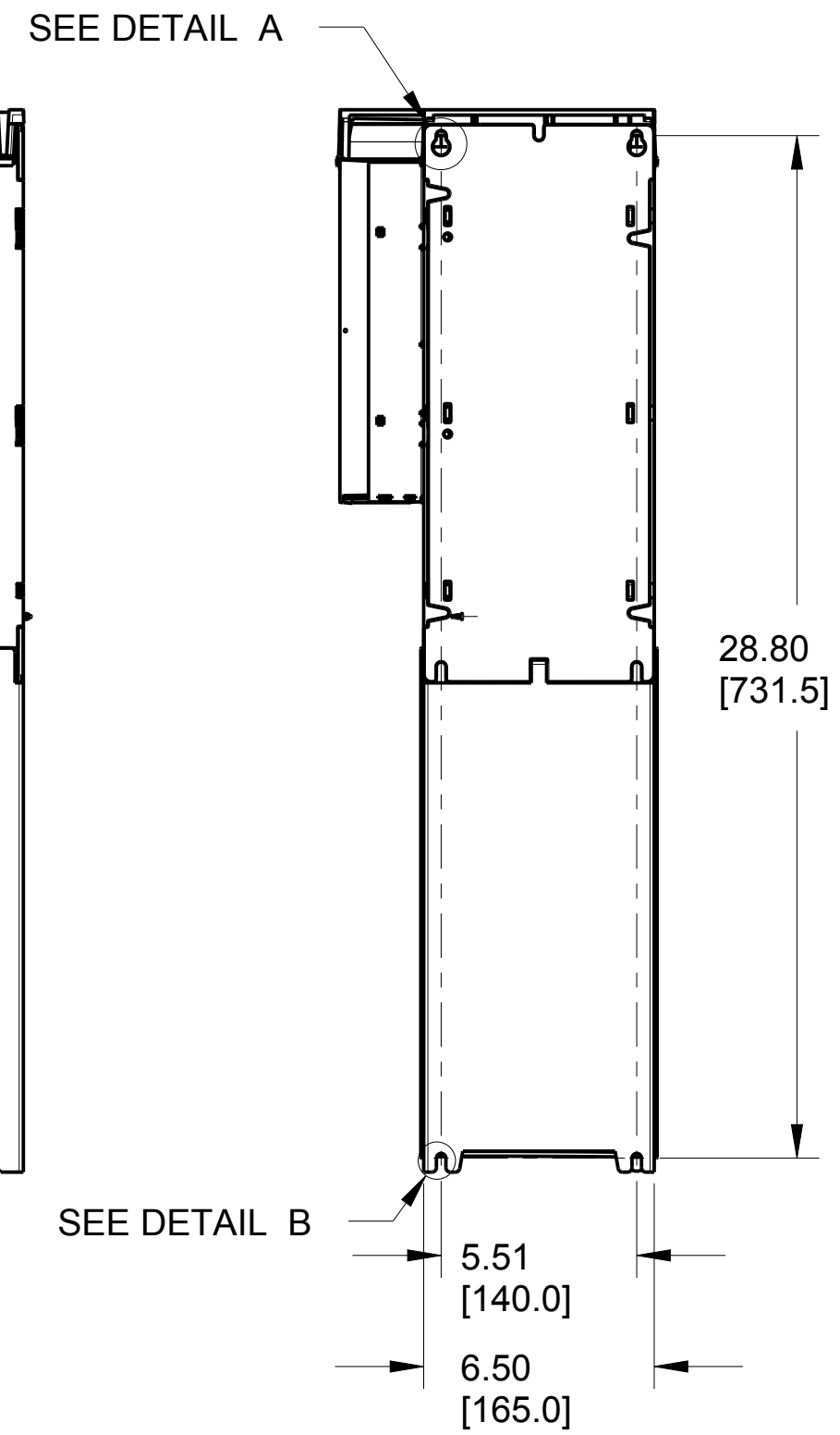
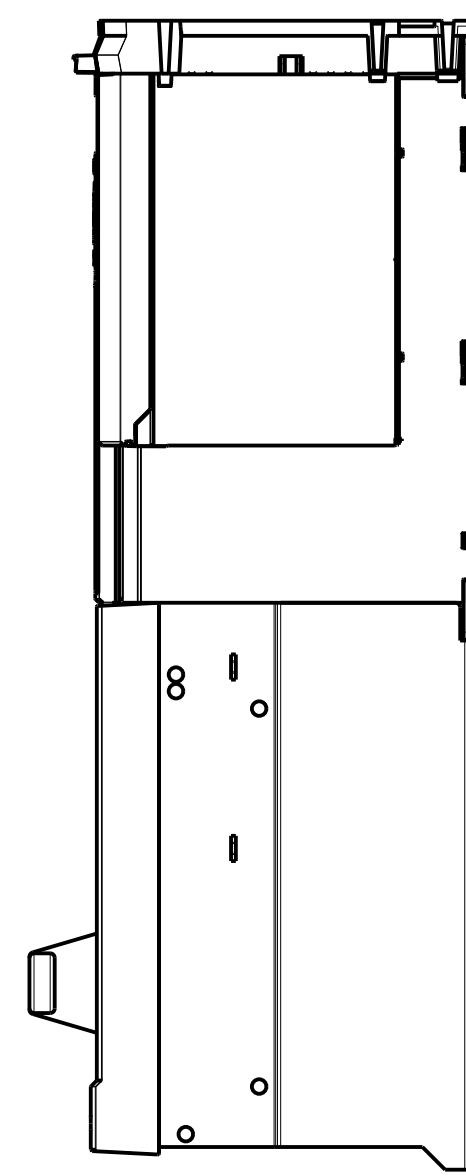
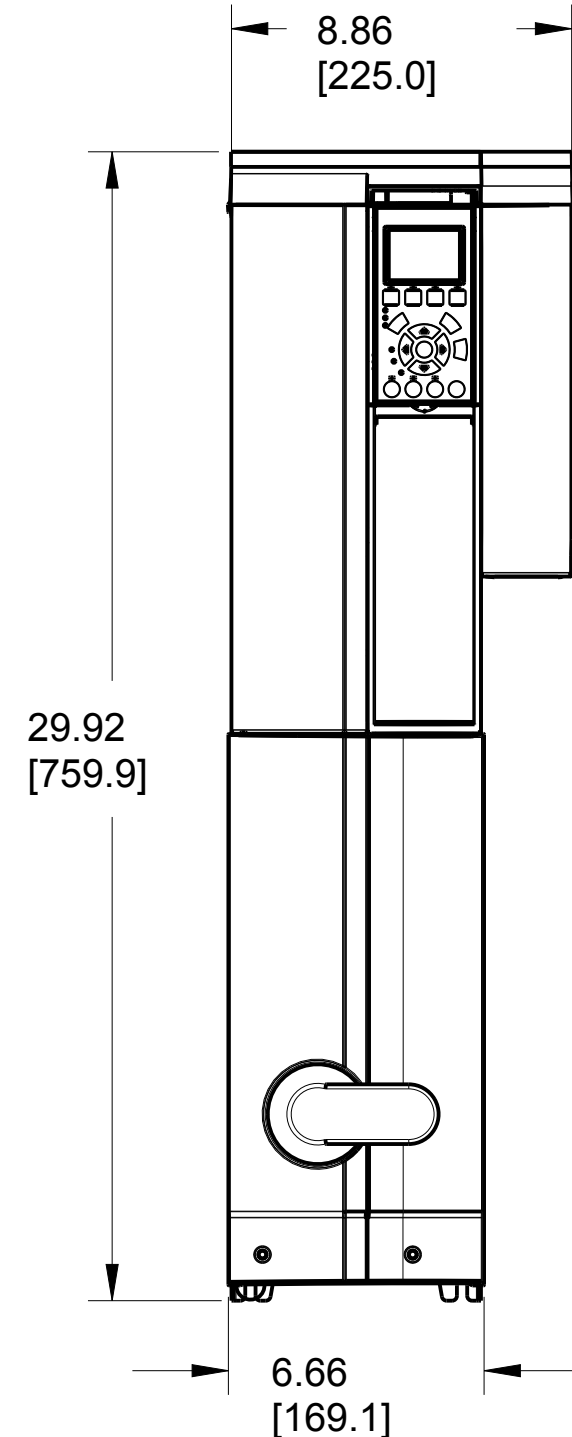
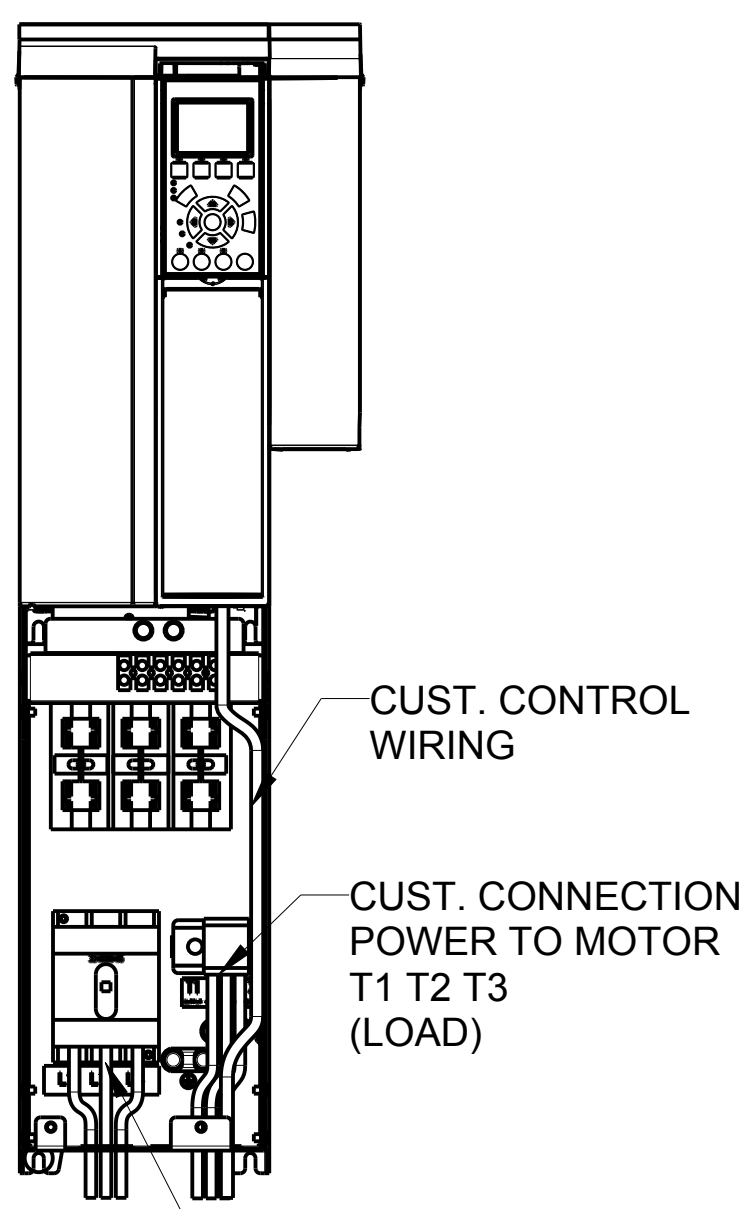
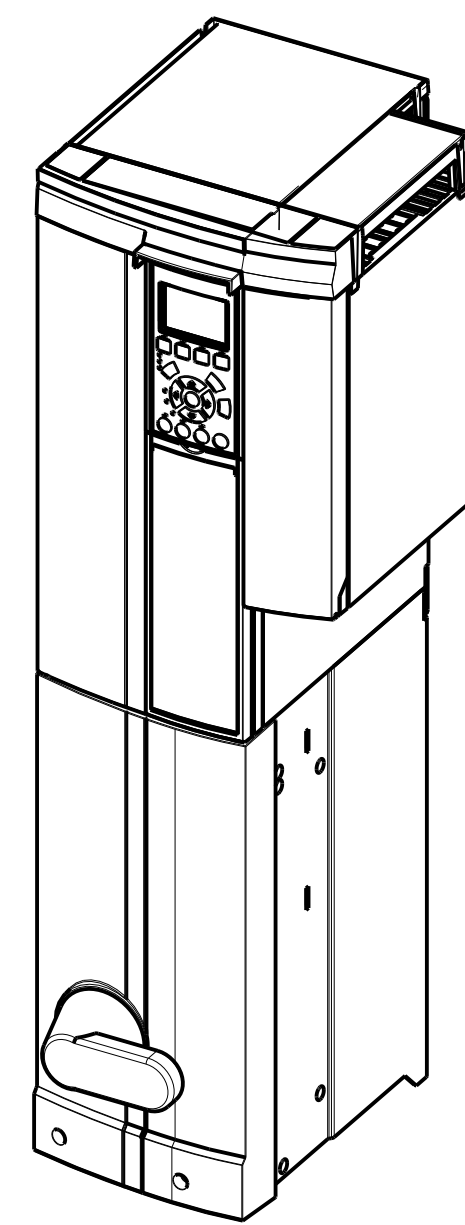


- NOTICE -

THIS DOCUMENT CONTAINS PROPRIETARY INFORMATION OF DANFOSS DRIVES. IT IS LOANED BY DANFOSS DRIVES SUBJECT TO THE CONDITIONS THAT IT AND THE INFORMATION EMBODIED THEREIN SHALL BE USED ONLY FOR RECORD AND REFERENCE PURPOSES. SHALL NOT BE USED OR CAUSED TO BE USED IN ANY WAY PREJUDICIAL TO THE INTERESTS OF DANFOSS DRIVES. SHALL NOT BE REPRODUCED OR COPIED IN WHOLE OR IN PART OR DISCLOSED TO ANYONE WITHOUT THE DIRECT WRITTEN PERMISSION OF DANFOSS DRIVES, AND SHALL BE RETURNED UPON REQUEST.

REVISION HISTORY

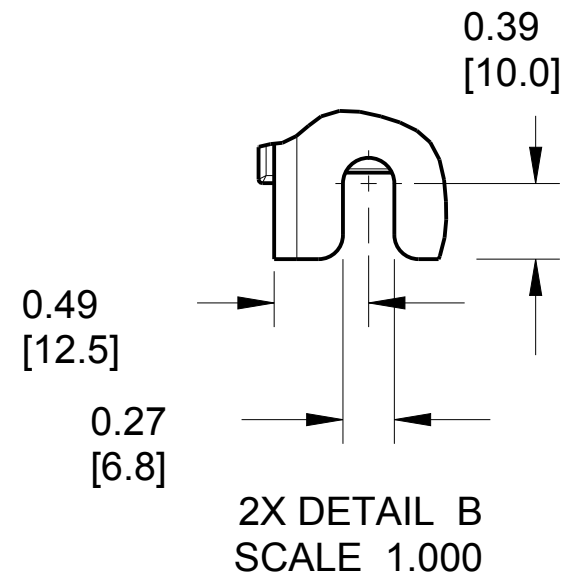
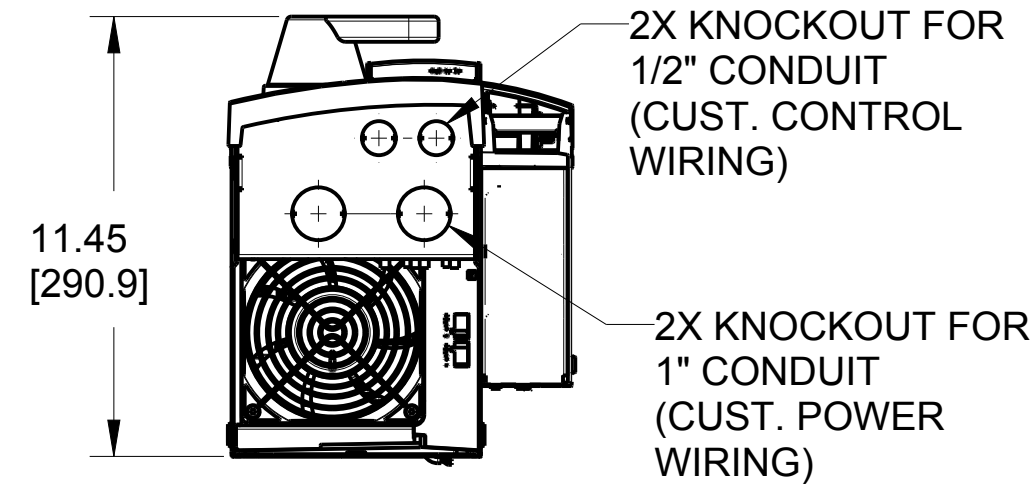
| REV | ECN NUMBER | ENTRY BY | DATE |
|-----|------------|----------|-----------|
| 002 | LP11027 | DK | 5/10/2011 |



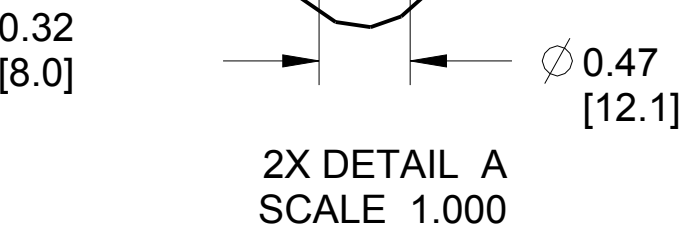
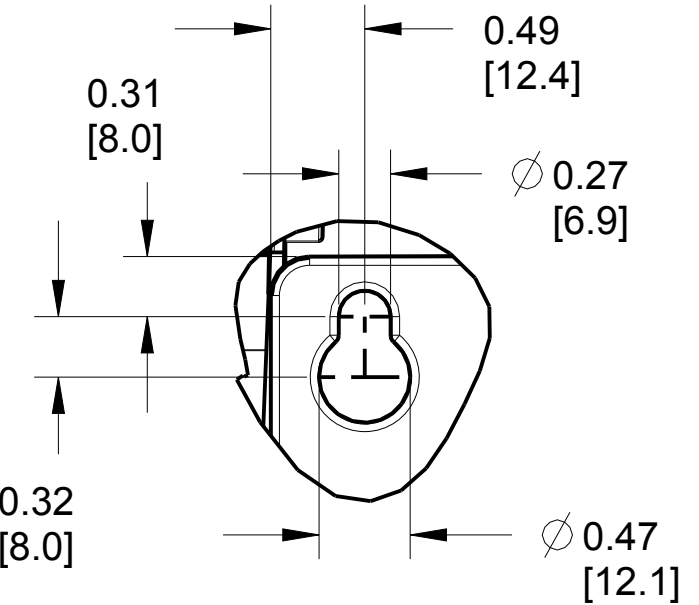
FRAME SIZE P2

| VOLTAGE | HP | KW |
|---------|-----|-----|
| 208 | 7.5 | 5.5 |
| | 10 | 7.5 |
| | 15 | 11 |
| 230 | 7.5 | 5.5 |
| | 10 | 7.5 |
| | 15 | 11 |
| 460 | 15 | 11 |
| | 20 | 15 |
| | 25 | 18 |
| 575 | 15 | 11 |
| | 20 | 15 |
| | 25 | 18 |

FRONT VIEW COVER REMOVED



CLEARANCE REQUIREMENT FOR AIR FLOW COOLING:
 THE UNIT MUST BE INSTALLED VERTICALLY WITH THE MINIMUM CLEARANCE OF 7.87" [200mm] ON THE BOTTOM, 2.00" [50.8 mm] ON THE TOP AND 1.50" [38.1mm] ON EITHER SIDE FOR UNIT COOLING.



| UNLESS OTHERWISE SPECIFIED INTERPRET DIM AND TOL. PER ASME Y14.5M-1994 | | PROPERTIES | |
|--|-----------|-------------|--------------------|
| .X± 0.4 | .XX± 0.20 | MATERIAL | |
| | ∠ ± 0.5 | FINISH | |
| DIM. ARE IN MILLIMETERS | | THICKNESS | |
| WEIGHTS ARE IN KILOGRAMS | | EST. WEIGHT | 36.0 Lbs [16.3 Kg] |
| THIRD ANGLE PROJECTION | | APPROVALS | INITIALS DATE |
| | | DRAWN | DK 08/18/10 |
| | | CHECKED | |
| | | ENGR | |

Danfoss

4401 N. BELL SCHOOL RD. LOVES PARK, ILLINOIS 61111 USA
 (815) 639-8600 FAX (815) 639-8000

TITLE: DWG.SUBMITTAL,P2,NON-BYPASS,P656

| | | |
|--------------|-----------------------|---------------|
| SIZE: C | MODEL: 177R0360 | REV: 002 |
| SCALE: 0.200 | DRAWING NO.: 177R0200 | SHEET: 1 OF 1 |