

- NOTICE -
 THIS DOCUMENT CONTAINS PROPRIETARY INFORMATION OF DANFOSS DRIVES. IT IS LOANED BY DANFOSS DRIVES SUBJECT TO THE CONDITIONS THAT IT AND THE INFORMATION EMBODIED THEREIN SHALL BE USED ONLY FOR RECORD AND REFERENCE PURPOSES. SHALL NOT BE USED OR CAUSED TO BE USED IN ANY WAY PREJUDICIAL TO THE INTERESTS OF DANFOSS DRIVES. SHALL NOT BE REPRODUCED OR COPIED IN WHOLE OR IN PART OR DISCLOSED TO ANYONE WITHOUT THE DIRECT WRITTEN PERMISSION OF DANFOSS DRIVES, AND SHALL BE RETURNED UPON REQUEST.

| REVISION HISTORY | | | |
|------------------|------------|----------|----------|
| REV | ECN NUMBER | ENTRY BY | DATE |
| 003 | LP11031 | JMH | 6/6/2011 |

D

C

B

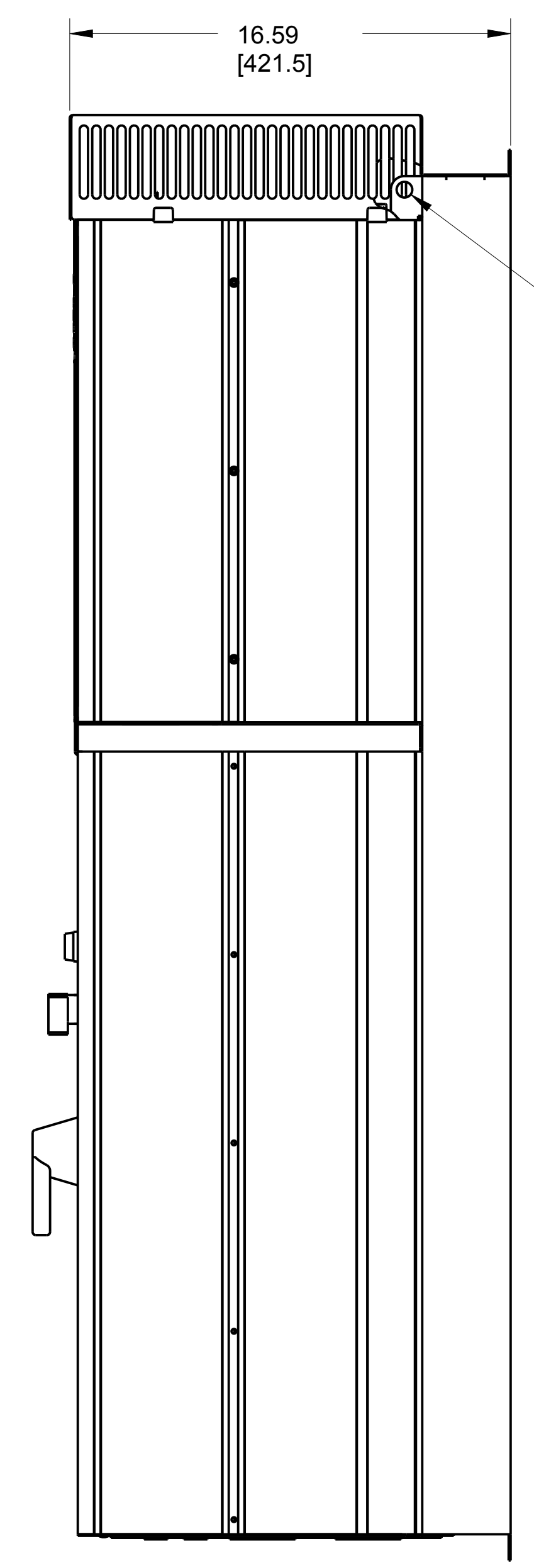
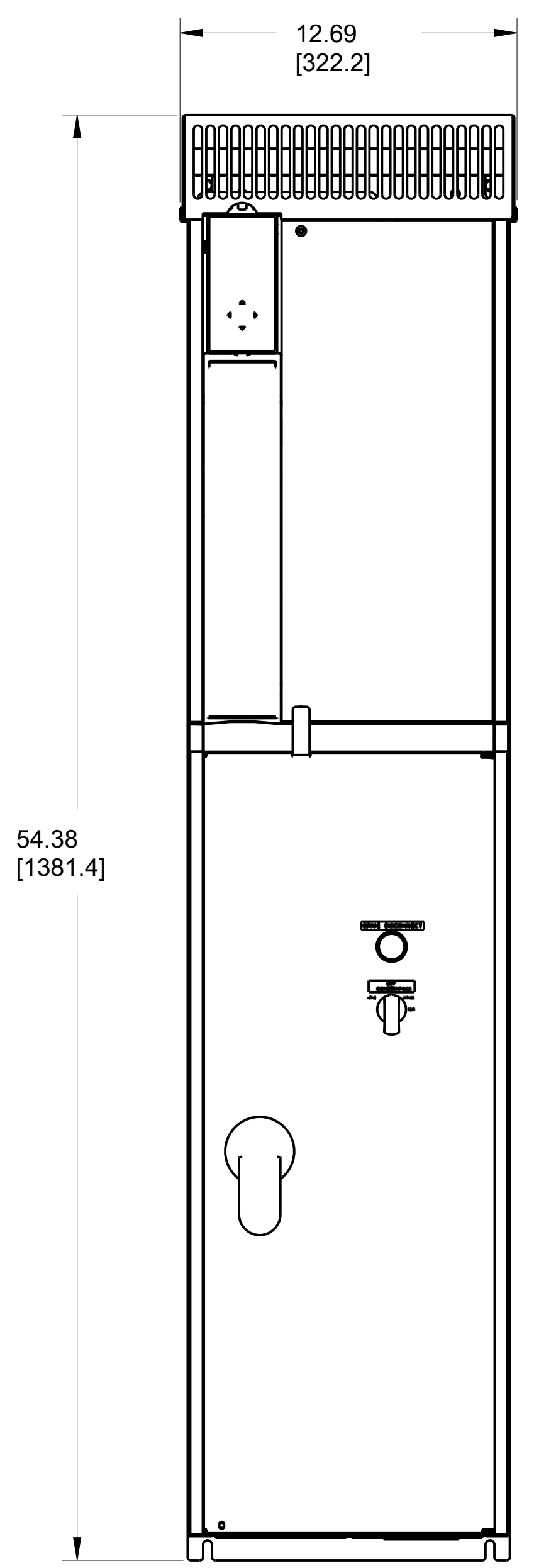
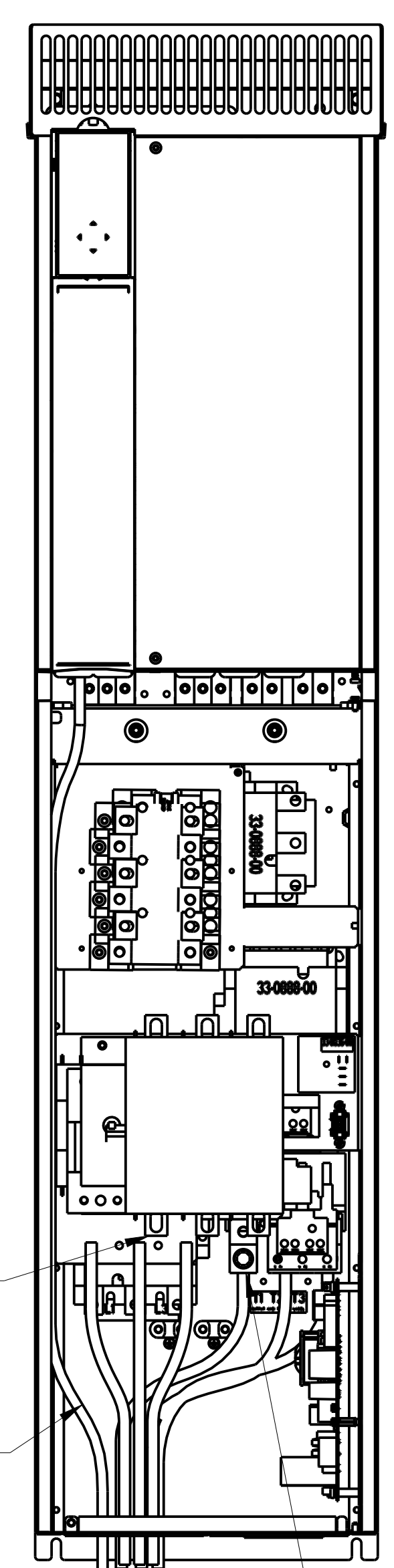
A

D

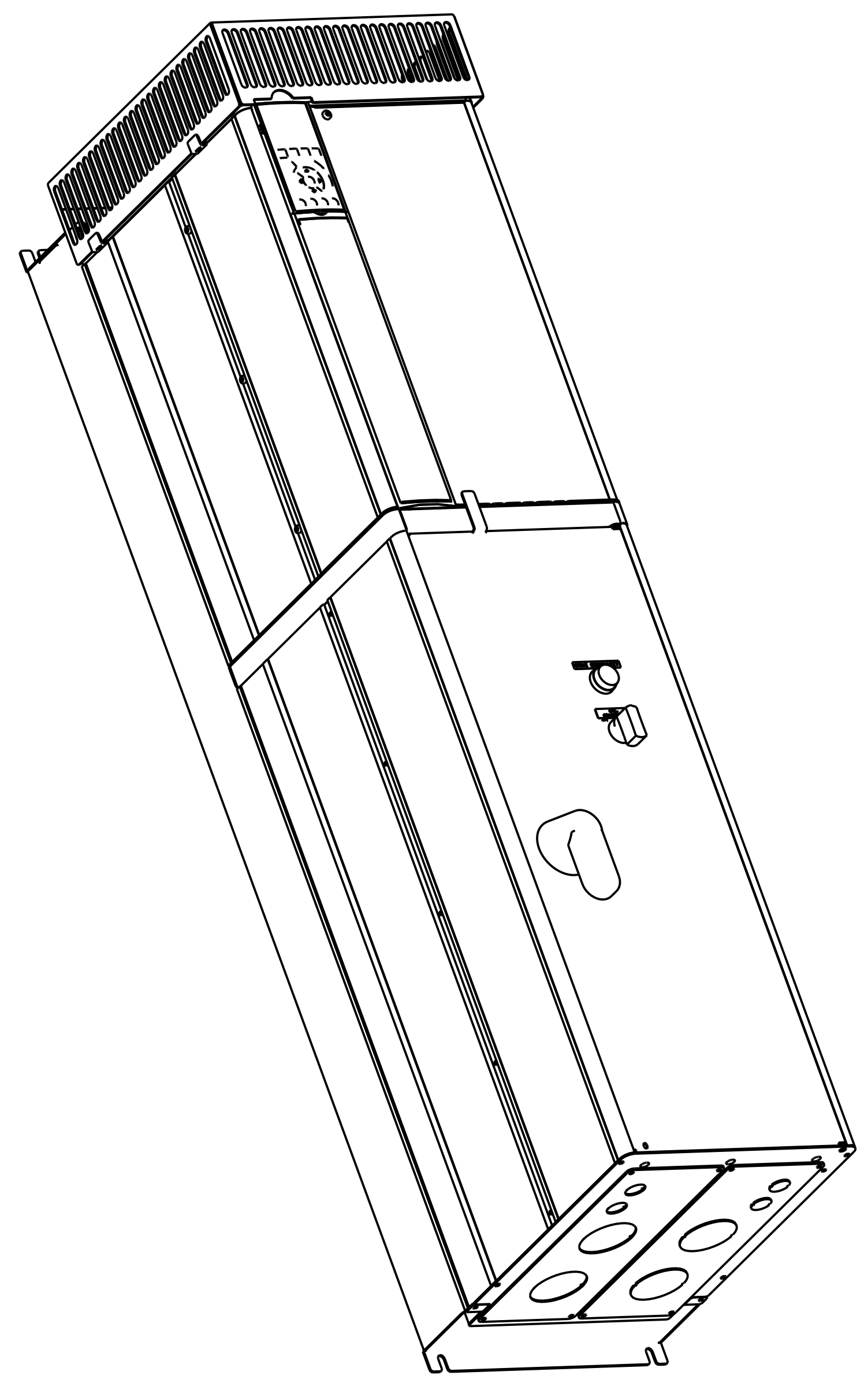
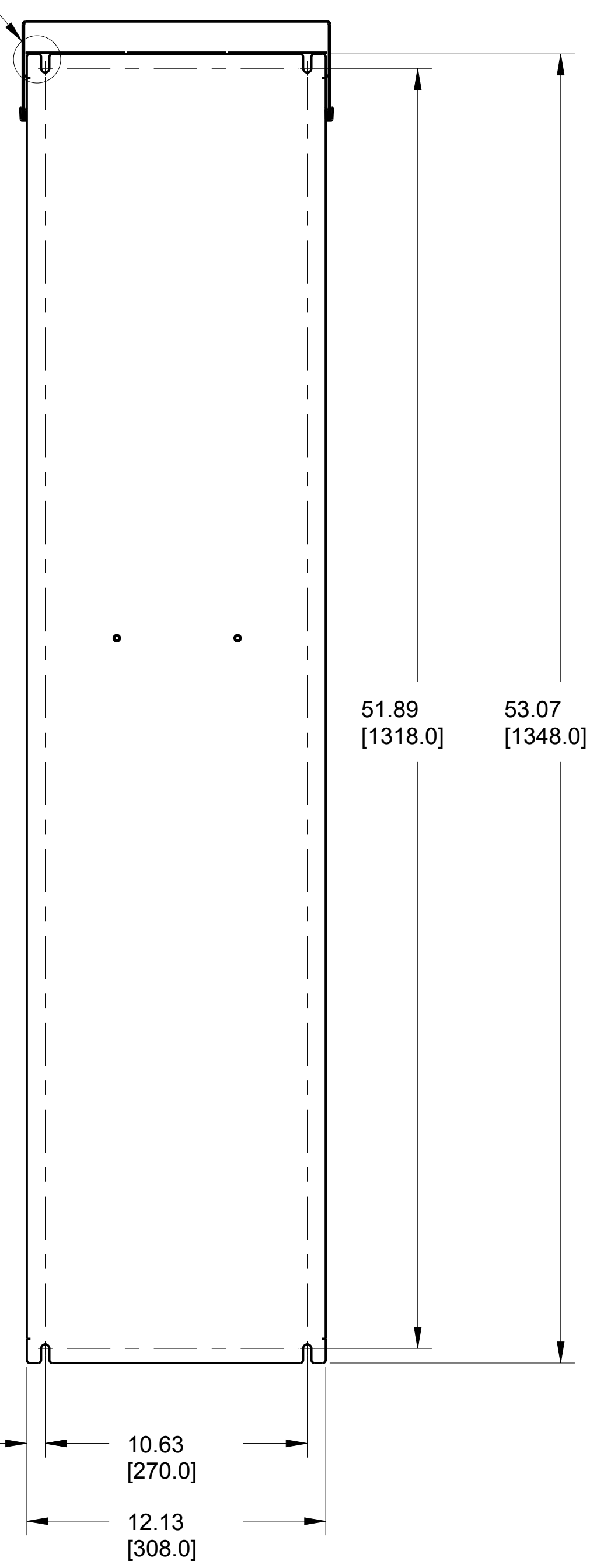
C

B

A

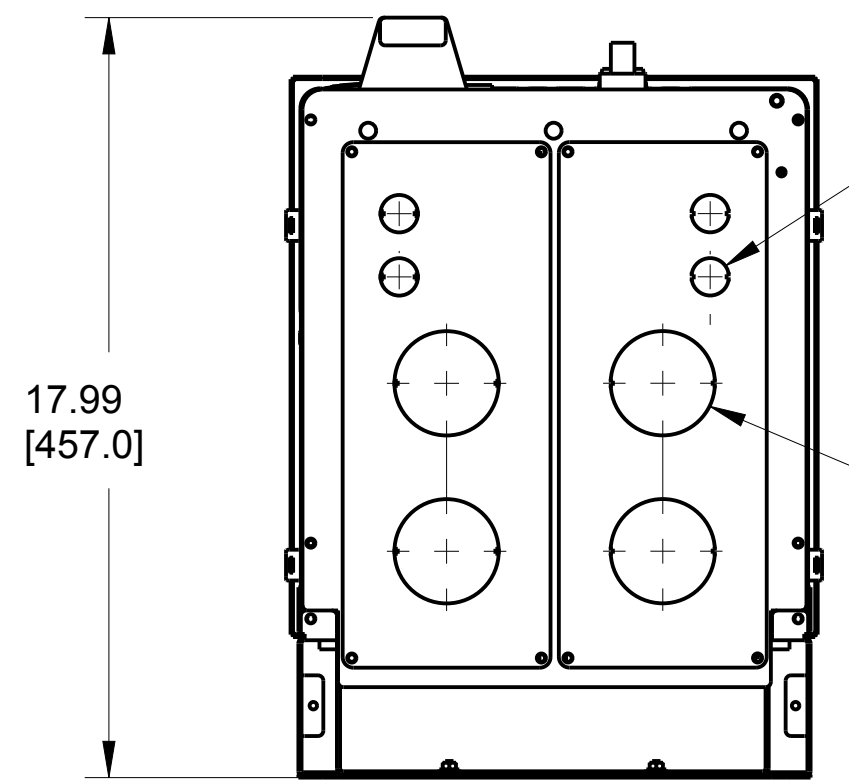
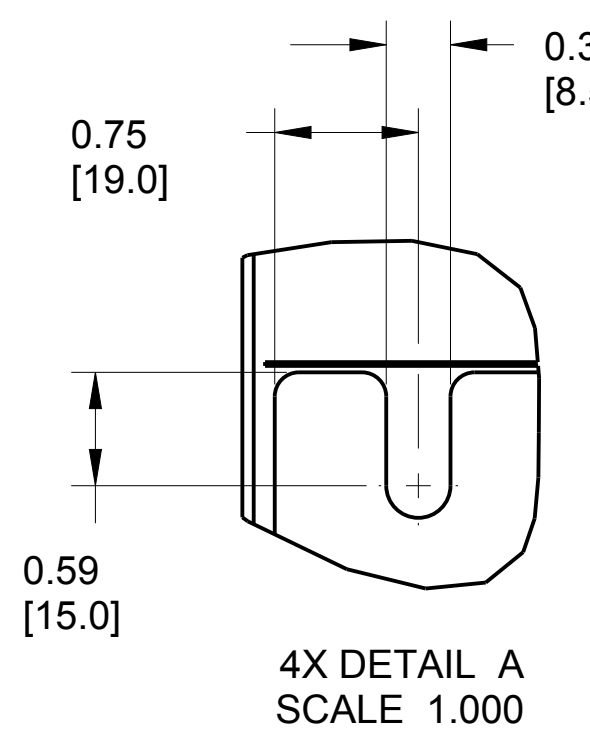


SEE DETAIL A
 Ø 0.59 [15.0]
 LIFTING HOLE



CUST. CONNECTION
 INPUT POWER
 L1 L2 L3
 (LINE)
 CUST. CONTROL
 WIRE

CUST. CONNECTION
 POWER TO MOTOR
 T1 T2 T3
 (LOAD)
 FRONT VIEW
 DOOR REMOVED



4X KNOCKOUT FOR
 1/2" CONDUIT
 (CUST. CONTROL WIRING)
 4X KNOCKOUT FOR
 2" CONDUIT
 (CUST. POWER WIRING)

| FRAME SIZE P4 | | |
|---------------|----|------|
| VOLTAGE | HP | KW |
| 208 | 25 | 18.5 |
| | 30 | 22 |
| | 40 | 30 |
| 230 | 30 | 22 |
| | 40 | 30 |
| 460 | 60 | 45 |
| | 75 | 55 |
| 575 | 60 | 45 |
| | 75 | 55 |

CLEARANCE REQUIREMENT FOR AIR FLOW COOLING:
 THE UNIT MUST BE INSTALLED VERTICALLY WITH THE
 MINIMUM CLEARANCE OF 7.87" [200mm] ON THE BOTTOM
 AND 2.00" [50.8 mm] ON THE TOP FOR UNIT COOLING.

| | | | | |
|---|---------------------|----------|----------|---|
| UNLESS OTHERWISE SPECIFIED INTERPRET DIM. AND TOL. PER ASME Y14.5M-1994 .X± 0.4 .XX± 0.20 ∠ ± 0.5 DIM. ARE IN MILLIMETERS WEIGHTS ARE IN KILOGRAMS THIRD ANGLE PROJECTION | PROPERTIES | | | 4401 N. BELL SCHOOL RD. LOVES PARK, ILLINOIS 61111 USA (815) 639-9600 FAX (815) 639-9000 |
| | MATERIAL | | | |
| | FINISH | | | |
| | THICKNESS | | | |
| EST. WEIGHT | 167.0 Lbs [75.7 Kg] | | | |
| APPROVALS | INITIALS | DATE | | |
| DRAWN | DK | 08/21/10 | | |
| CHECKED | | | | |
| ENGR | | | | |
| DWG. SUBMITTAL_P4.BYPASS.P656 | | | | TITLE |
| SCALE | D | MODEL | 177R0235 | REV |
| 0.250 | DRAWING NO. | 177R0205 | | 003 |
| | | | | SHEET |
| | | | | 1 OF 1 |