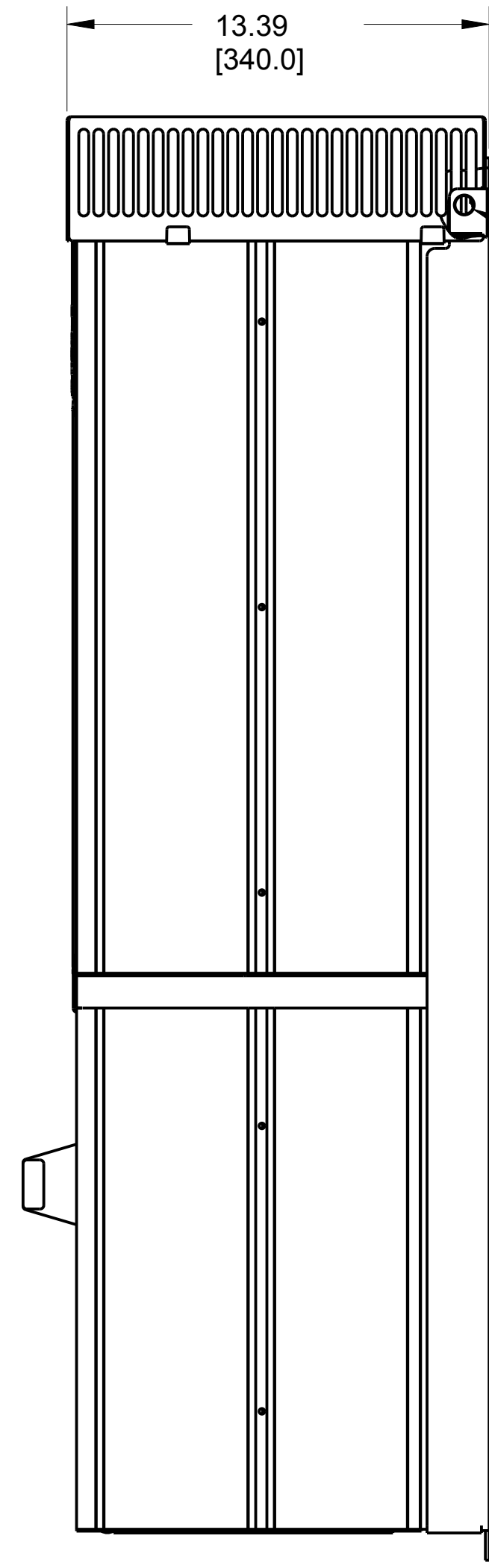
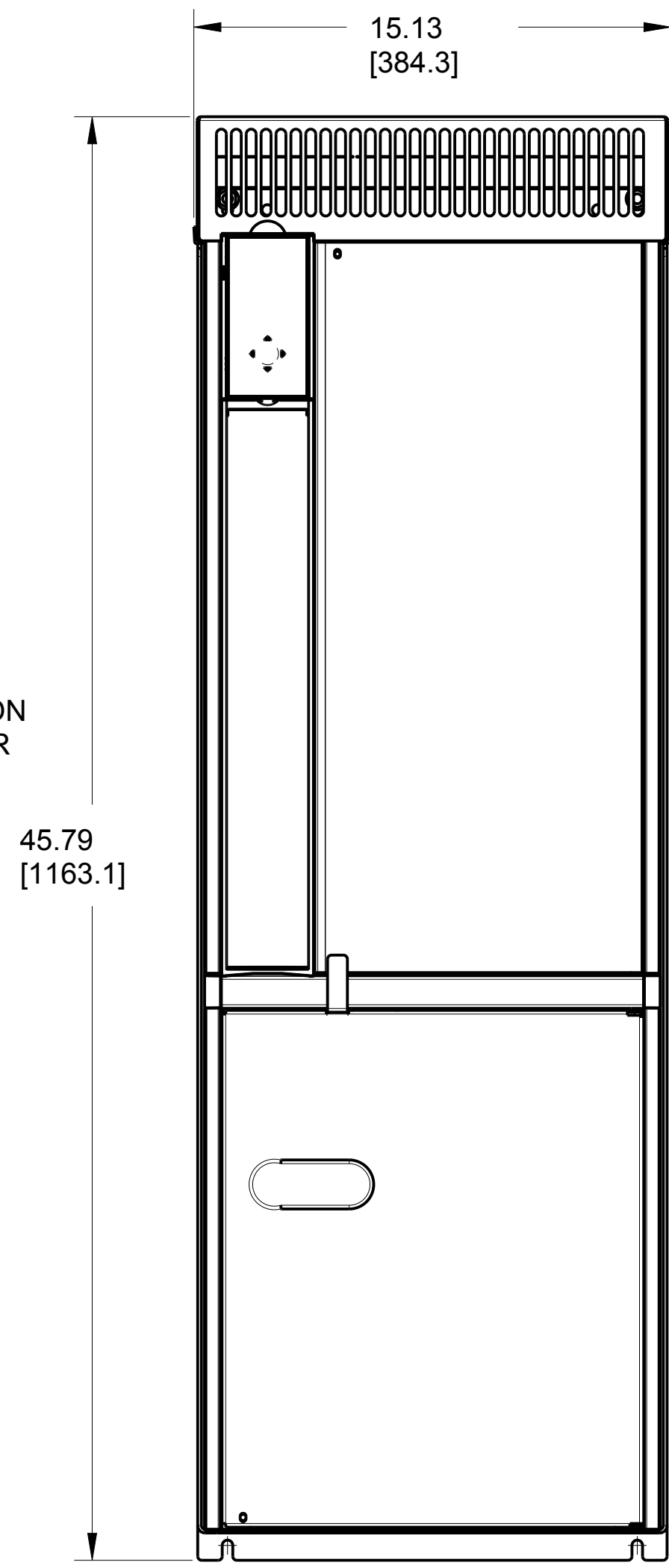
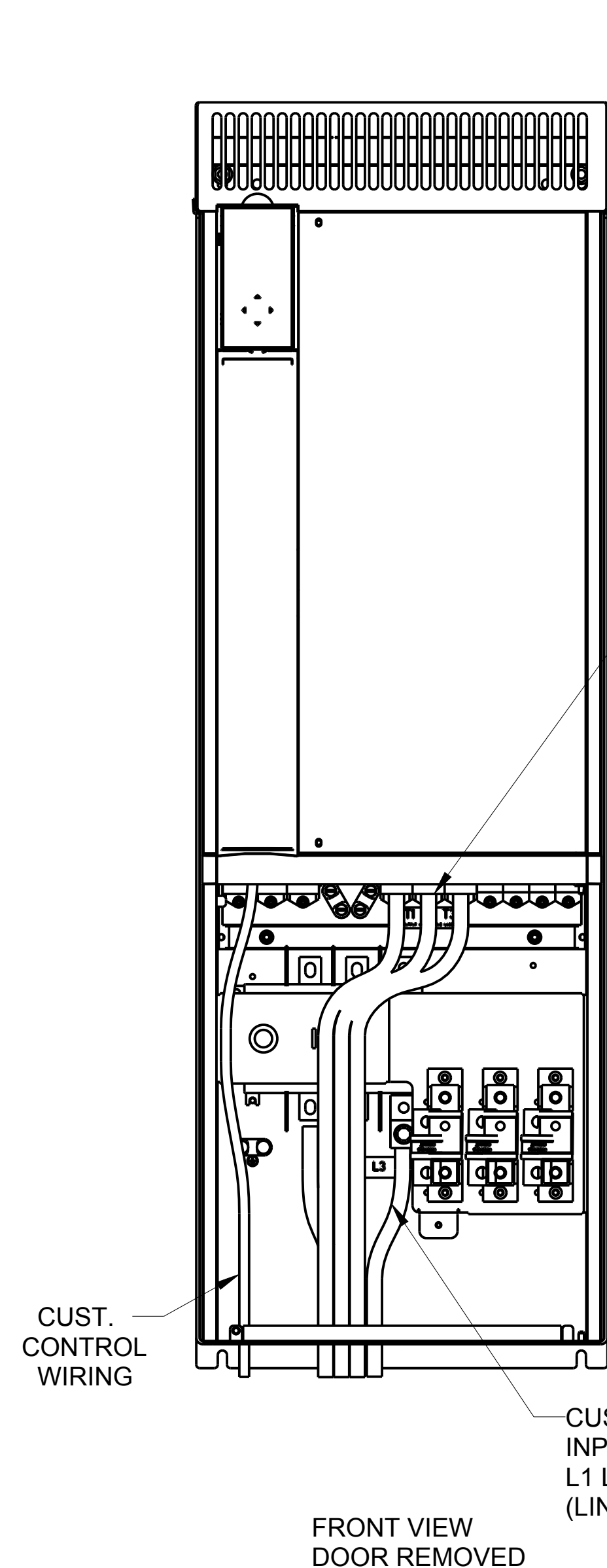
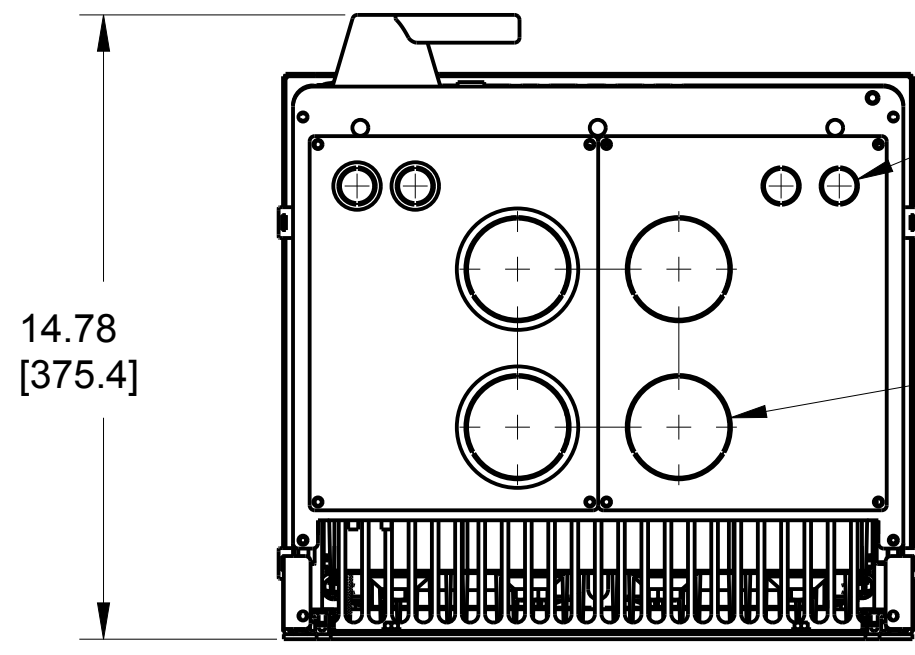
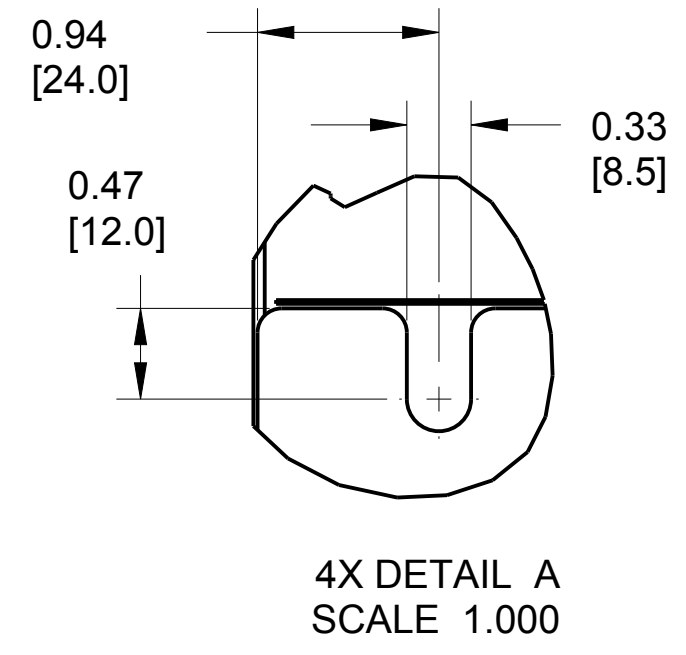
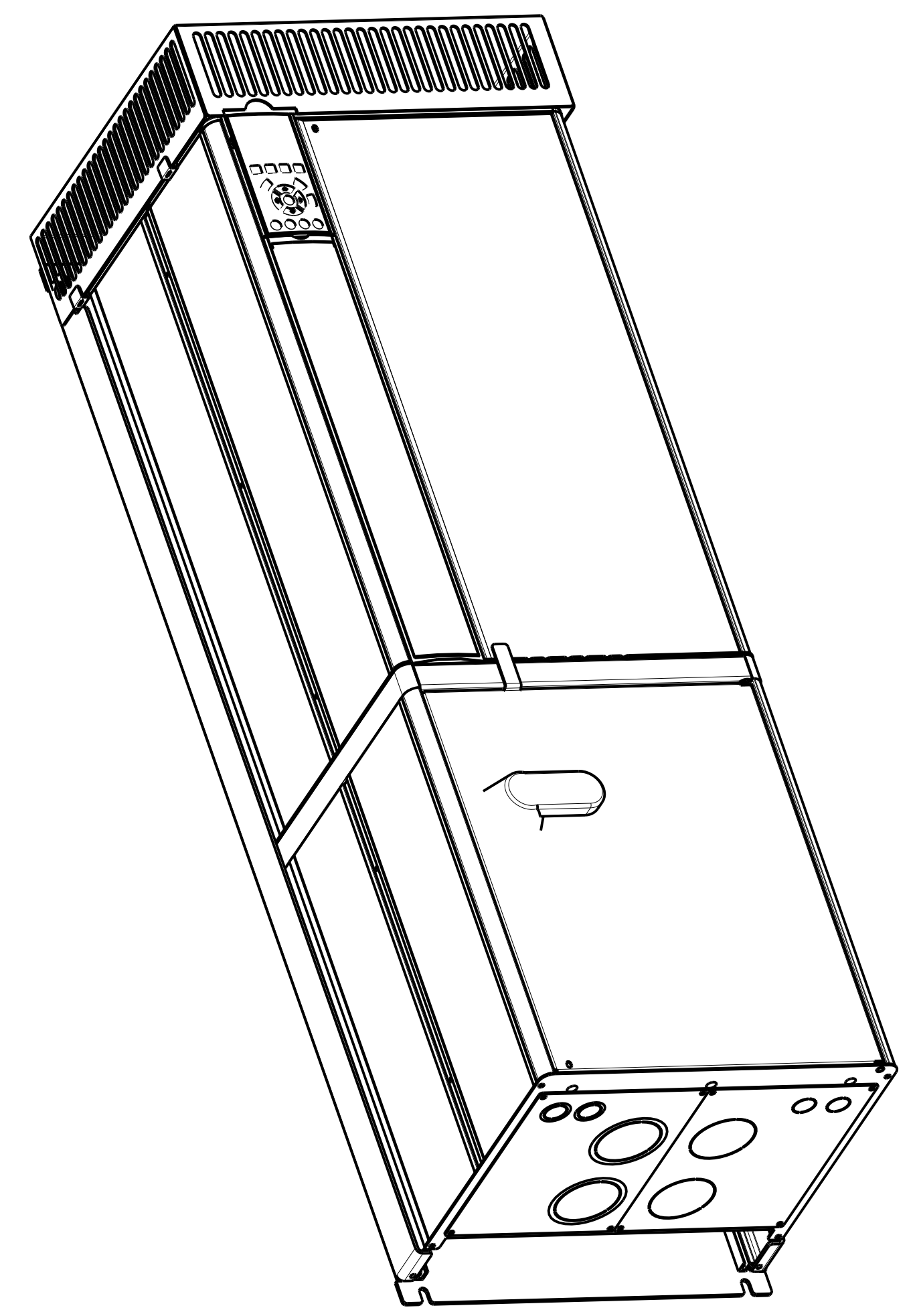
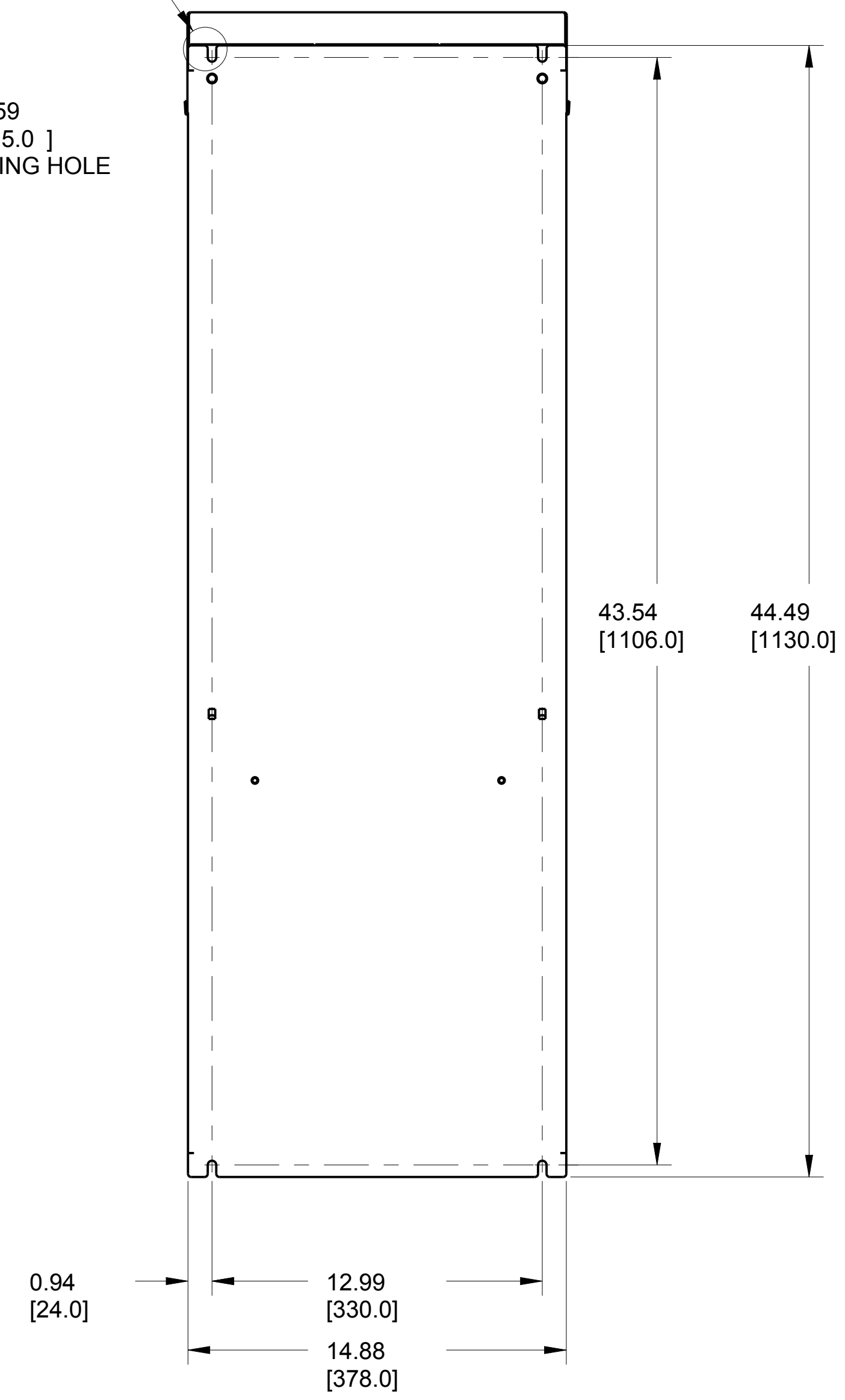


- NOTICE -
 THIS DOCUMENT CONTAINS PROPRIETARY INFORMATION OF DANFOSS DRIVES. IT IS LOANED BY DANFOSS DRIVES SUBJECT TO THE CONDITIONS THAT IT AND THE INFORMATION EMBODIED THEREIN SHALL BE USED ONLY FOR RECORD AND REFERENCE PURPOSES. SHALL NOT BE USED OR CAUSED TO BE USED IN ANY WAY PREJUDICIAL TO THE INTERESTS OF DANFOSS DRIVES. SHALL NOT BE REPRODUCED OR COPIED IN WHOLE OR IN PART OR DISCLOSED TO ANYONE WITHOUT THE DIRECT WRITTEN PERMISSION OF DANFOSS DRIVES, AND SHALL BE RETURNED UPON REQUEST.

REVISION HISTORY			
REV	ECN NUMBER	ENTRY BY	DATE
002	LP11027	DK	5/11/2011



SEE DETAIL A
 $\varnothing 0.59$
 [15.0]
 LIFTING HOLE



4X KNOCKOUT FOR 1/2" CONDUIT (CUST. CONTROL WIRING)
 4X KNOCKOUT FOR 2" CONDUIT (CUST. POWER WIRING)

FRAME SIZE P5		
VOLTAGE	HP	KW
208	50	37
	60	45
230	50	37
	60	45
460	100	75
	125	90
575	100	75
	125	90

CLEARANCE REQUIREMENT FOR AIR FLOW COOLING:
 THE UNIT MUST BE INSTALLED VERTICALLY WITH THE MINIMUM CLEARANCE OF 8.86" [225mm] ON THE BOTTOM AND 2.00" [50.8 mm] ON THE TOP FOR UNIT COOLING.

UNLESS OTHERWISE SPECIFIED INTERPRET DIM AND TOL PER ASME Y14.5M-1994 .X± 0.1 .XX± 0.01 ∠ ± 0.5 DIM ARE IN MILLIMETERS WEIGHTS ARE IN KILOGRAMS THIRD ANGLE PROJECTION	PROPERTIES			 4401 N. BELL SCHOOL RD. LOVES PARK, ILLINOIS 61111 USA (615) 639-6600 FAX (615) 639-9000
	MATERIAL			
	FINISH			
	THICKNESS			
EST. WEIGHT	155.0 Lbs [70.3 Kg]	TITLE		
APPROVALS	INITIALS	DATE	DWG. SUBMITTAL P5, NON-BYPASS, P656	
DRAWN	DK	08/23/10	SIZE	D
CHECKED			SCALE	0.220
ENGR			DRAWING NO.	177R0206
			REV	002
			SHEET	1 OF 1