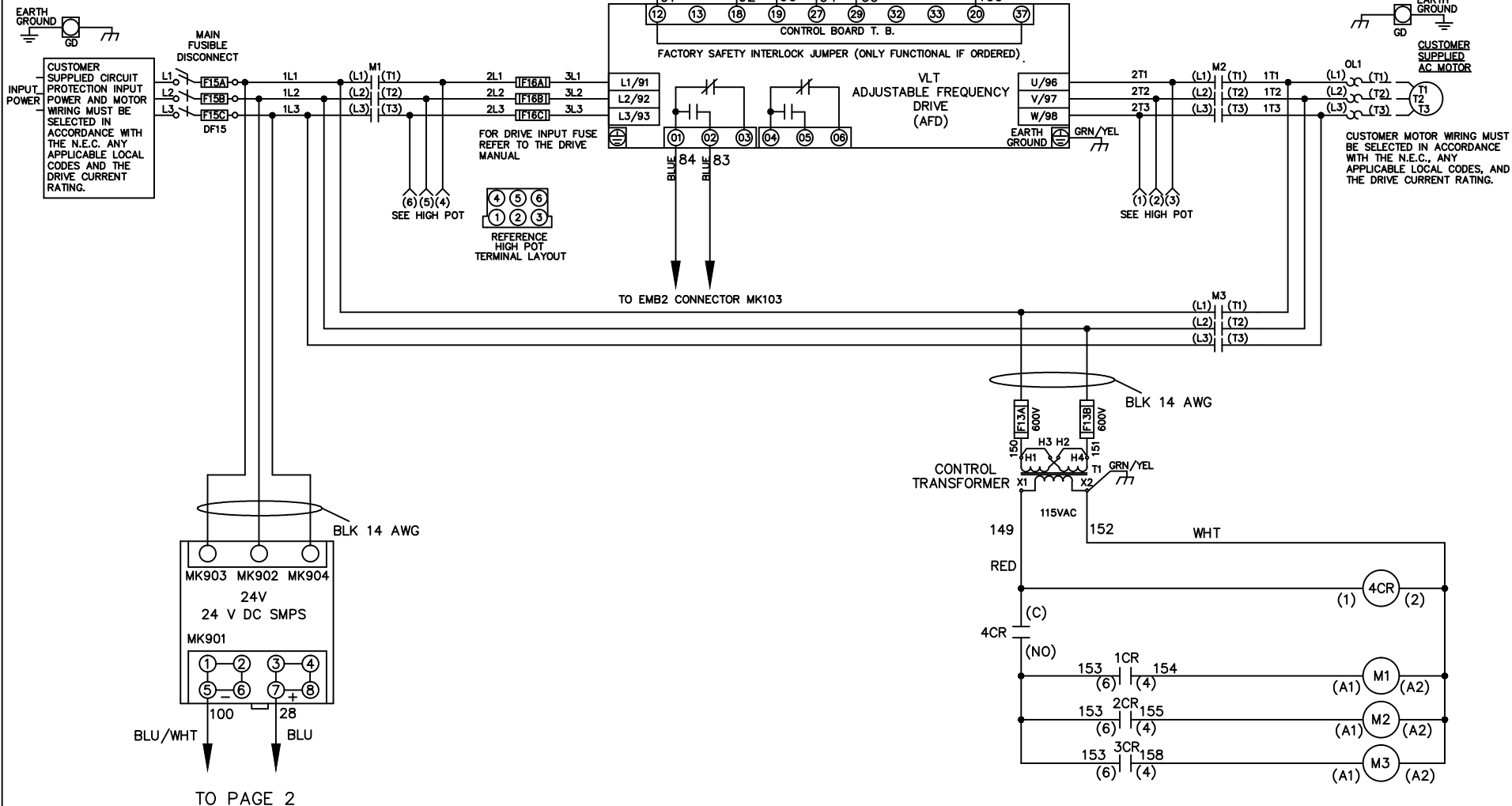


**WIRE COLOR SCHEME**  
 BLACK - LINE VOLTAGE  
 RED - AC CONTROL  
 WHITE - AC GROUNDED  
 CIRCUIT CONDUCTOR  
 BLUE - DC CONTROL  
 WHT/BLU - DC CONTROL COMMON  
 GREEN - CHASSIS GROUND



-NOTICE-

THIS DRAWING IS PROPRIETARY AND SHALL NOT BE COPIED OR ITS CONTENTS DISCLOSED TO OUTSIDE PARTIES WITHOUT THE WRITTEN CONSENT OF THE TRANE COMPANY

DRN JNW  
3/2/11

APR

NAMEDWG,P5,  
EMB2,FD,  
230V

MODEL

**THE TRANE COMPANY**  
A DIVISION OF  
AMERICAN STANDARD INC.

001

REV ECN DATE

PAGE 1 OF 2

SIZE A

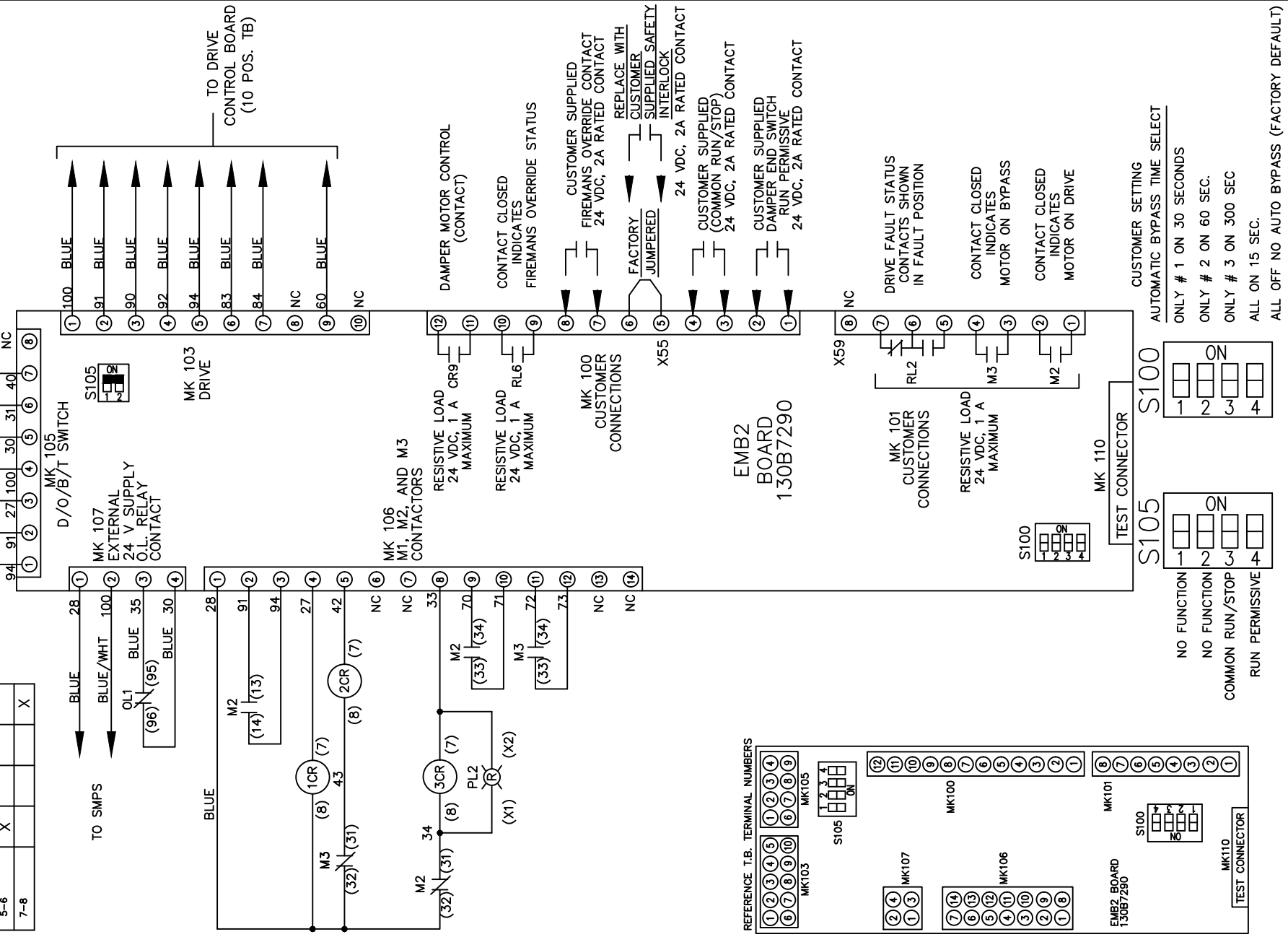
DWG NO.

177R0313

CONTACT SEQUENCE CHART FOR S1  
X INDICATES CONTACT CLOSED

POSITION	DRIVE	OFF	BYPASS	TEST
CONTACT				
1-2	X			X
3-4			X	X
5-6	X			
7-8				X

CUSTOMER CONNECTIONS X55,X59  
CLASS 2 POWER SOURCE  
REQUIRED FOR FIELD CONNECTION  
USE CLASS 1 CONDUCTORS  
CONDUCTOR SIZE 28-14 AWG



001		
REV	ECN	DATE

-NOTICE-  
THIS DRAWING IS PROPRIETARY AND SHALL NOT BE COPIED OR ITS CONTENTS DISCLOSED TO OUTSIDE PARTIES WITHOUT THE WRITTEN CONSENT OF THE TRANE COMPANY

DRN JNW  
3/2/11  
APR

NAMEDWG,P5,  
EMB2,FD,  
230V

MODEL

PAGE 2 OF 2

SIZE A

DWG NO.

177R0313

THE TRANE COMPANY  
A DIVISION OF  
AMERICAN STANDARD INC.