

4

3

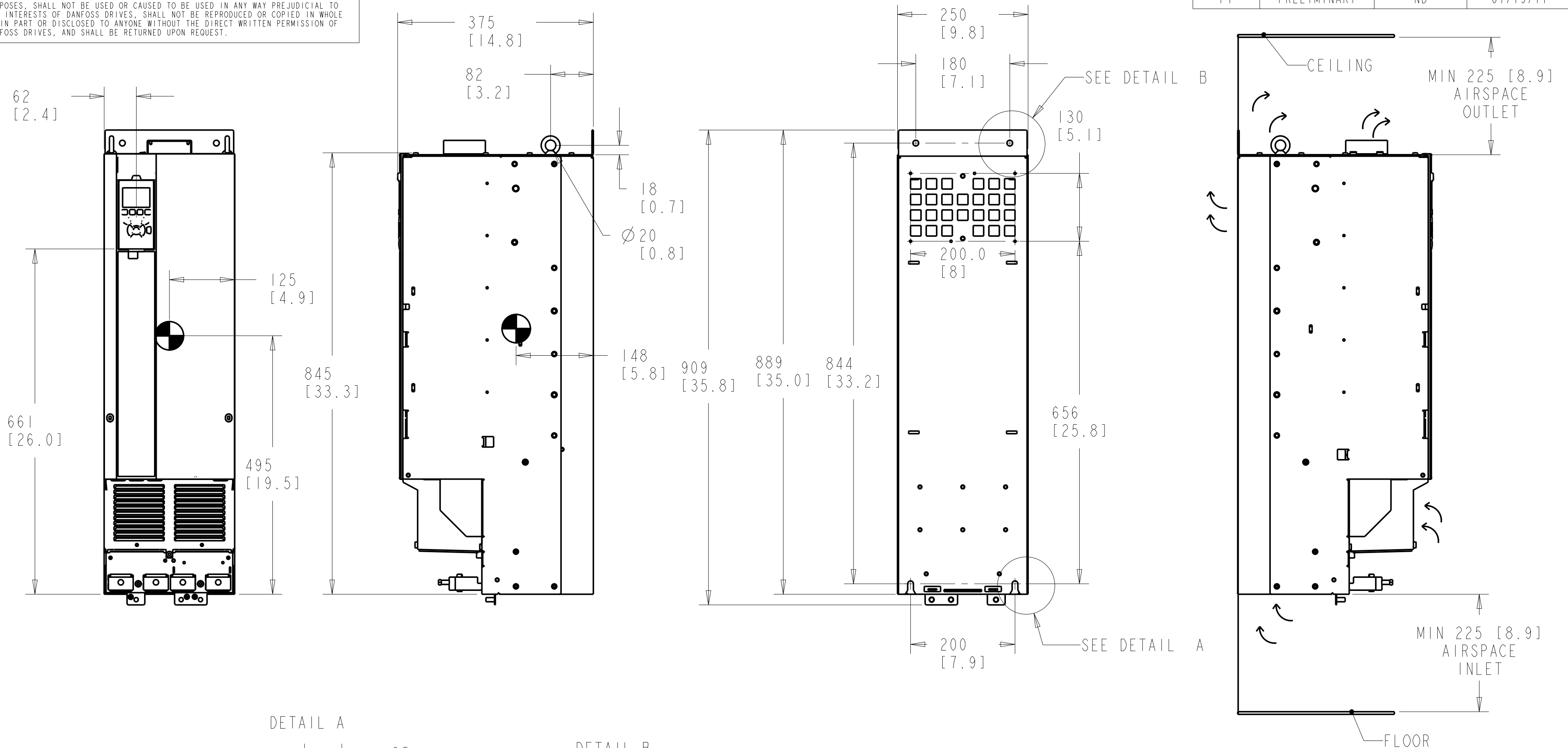
2

1

- NOTICE -

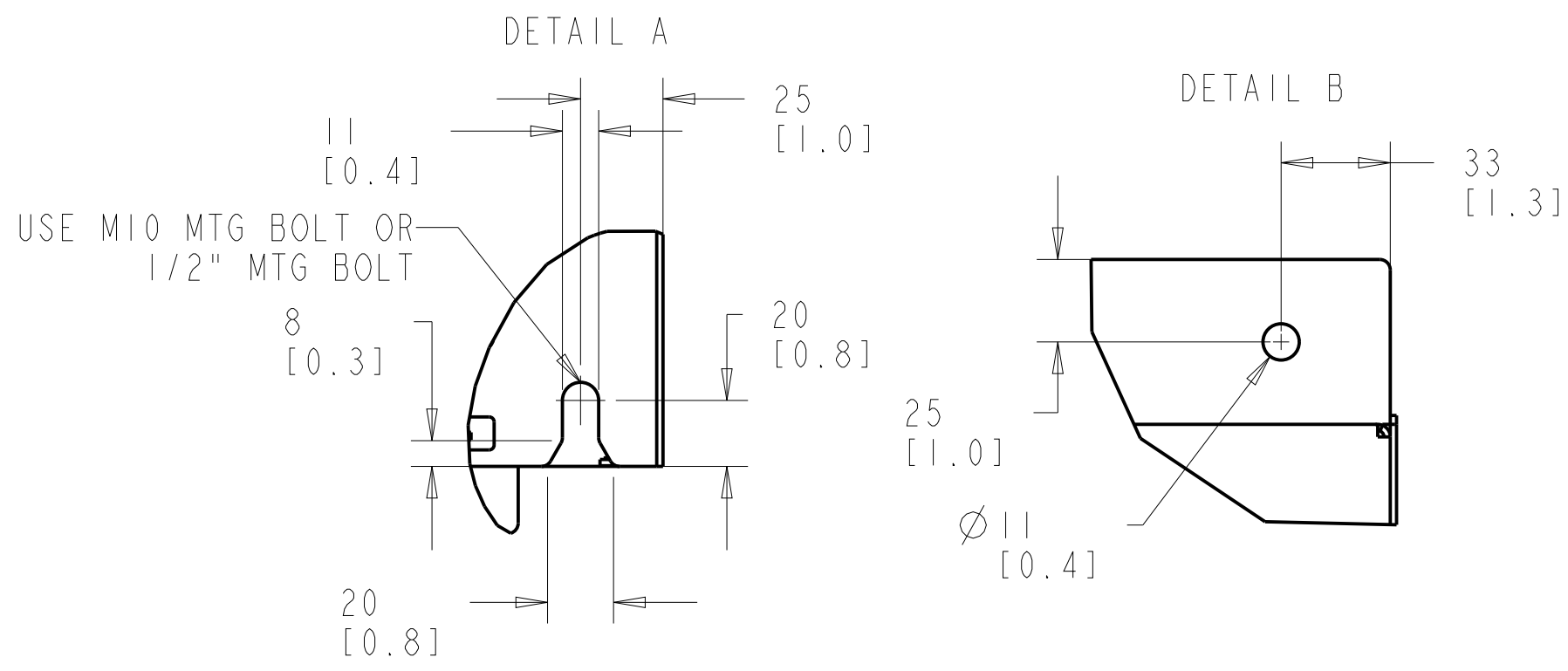
THIS DOCUMENT CONTAINS PROPRIETARY INFORMATION OF DANFOSS DRIVES. IT IS LOANED BY DANFOSS DRIVES SUBJECT TO THE CONDITIONS THAT IT AND THE INFORMATION EMBODIED THEREIN SHALL BE USED ONLY FOR RECORD AND REFERENCE PURPOSES. SHALL NOT BE USED OR CAUSED TO BE USED IN ANY WAY PREJUDICIAL TO THE INTERESTS OF DANFOSS DRIVES. SHALL NOT BE REPRODUCED OR COPIED IN WHOLE OR IN PART OR DISCLOSED TO ANYONE WITHOUT THE DIRECT WRITTEN PERMISSION OF DANFOSS DRIVES, AND SHALL BE RETURNED UPON REQUEST.

REVISION HISTORY			
REV	ECN NUMBER	ENTRY BY	DATE
PI	PRELIMINARY	ND	07/19/11



1. MAX AIRFLOW (BACKCHANNEL) - 7 M³/MIN (250 CFM)
2. MAX AIRFLOW (CABINET) - 1.7 M³/MIN (60 CFM)
3. MAX WEIGHT = 62 KG (135 LBS)
4. CENTER OF GRAVITY:
APPROXIMATE LOCATION ONLY, LOCATION MAY VARY BASED ON POWER RATING AND OPTIONS ORDERED.

PRELIMINARY RELEASE



UNLESS OTHERWISE SPECIFIED INTERPRET DIM. AND TOL. PER ASME Y14.5M-1994	PROPERTIES			TITLE
	MATERIAL	N/A		
FINISH	N/A			
.X±0.4 .XX±0.2 <±0.5	THICKNESS	N/A		INSTALLATION DRAWING, D3H, 1P20/CHASSIS
DIM. ARE IN MILLIMETERS WEIGHTS ARE IN KILOGRAMS	EST. WEIGHT	62		
THIRD ANGLE PROJECTION	APPROVALS	INITIALS	DATE	REV
	DRAWN	CCN	06/17/11	PI
	CHECKED			
	ENGR			
	SIZE	C	MODEL	
	SCALE	0.175	DRAWING NO.	177R0339
				SHEET 1 OF 3

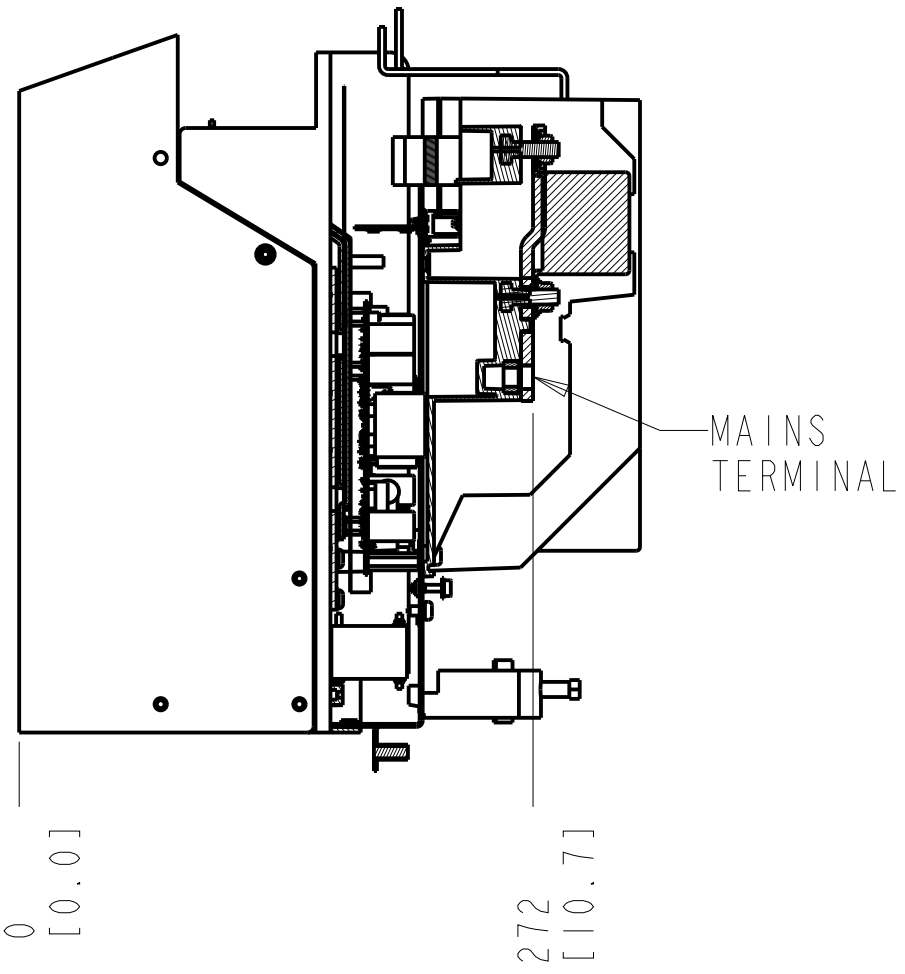
4

3

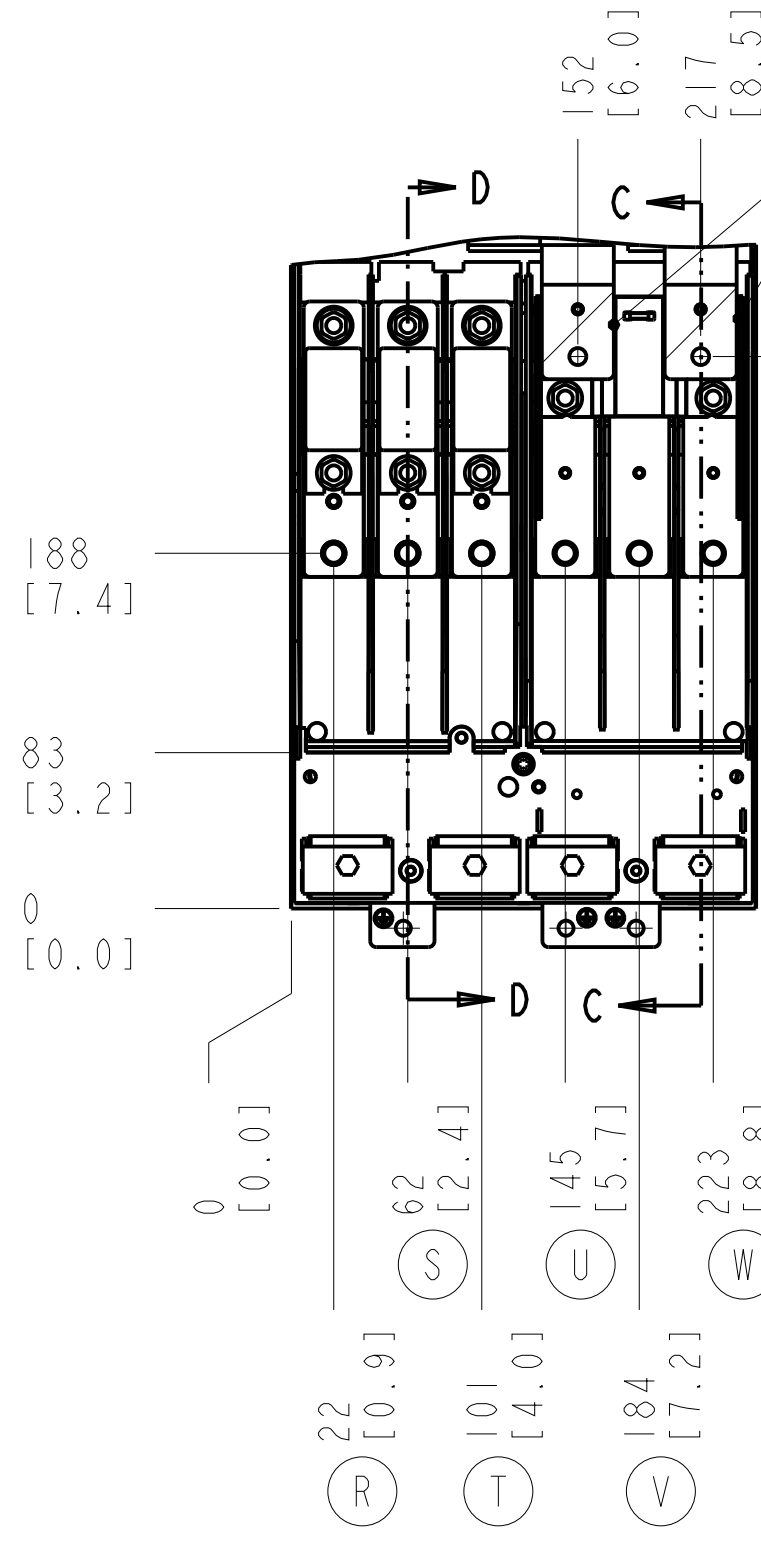
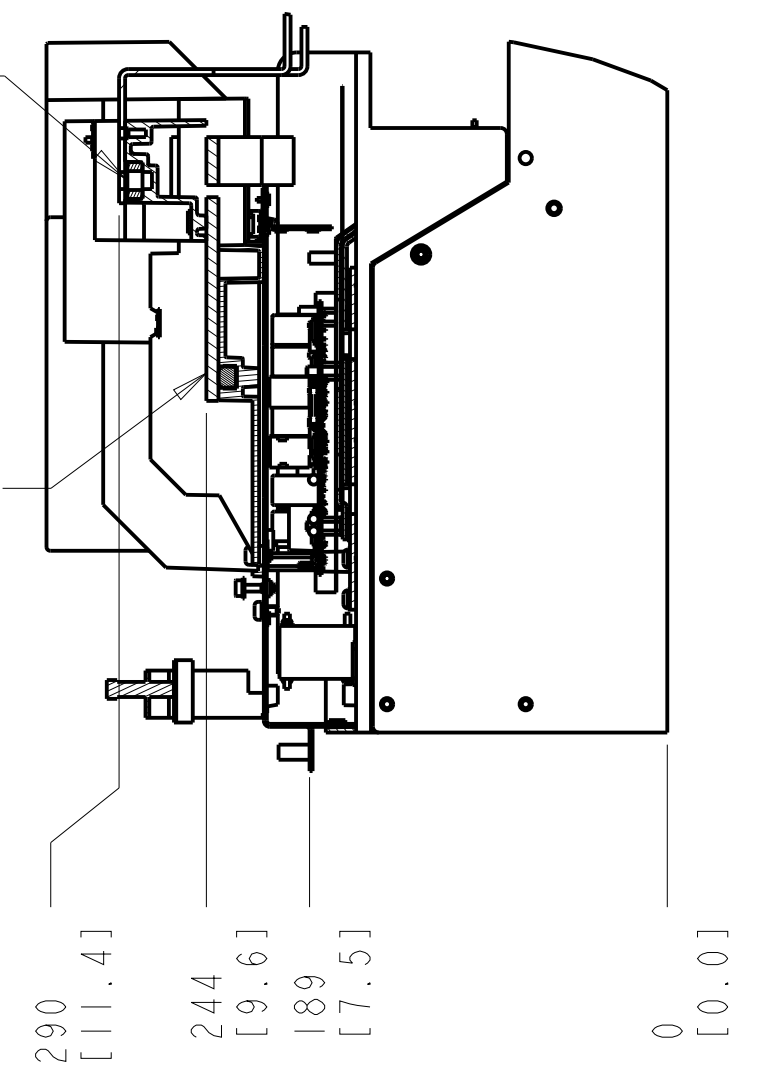
2

1

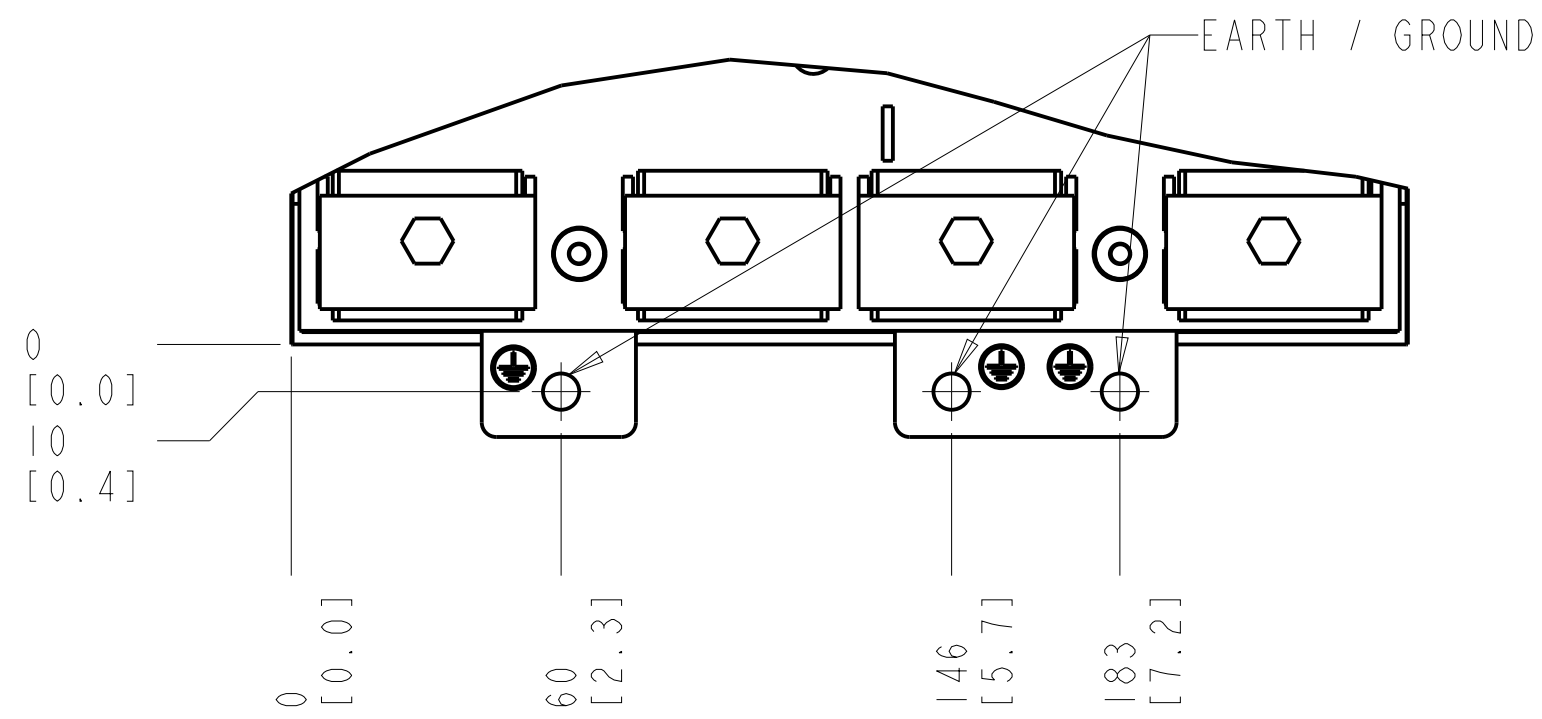
SECTION D-D
MAINS TERMINALS



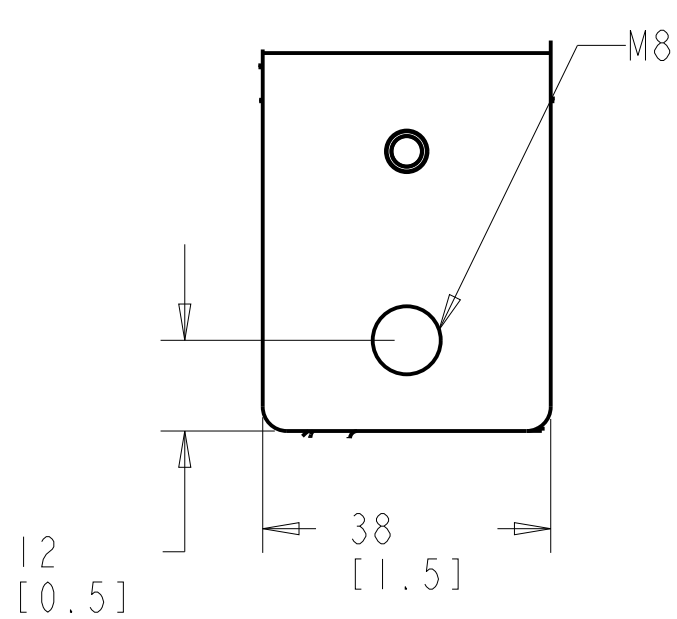
SECTION C-C
MOTOR TERMINALS AND
BRAKE / REGEN TERMINALS



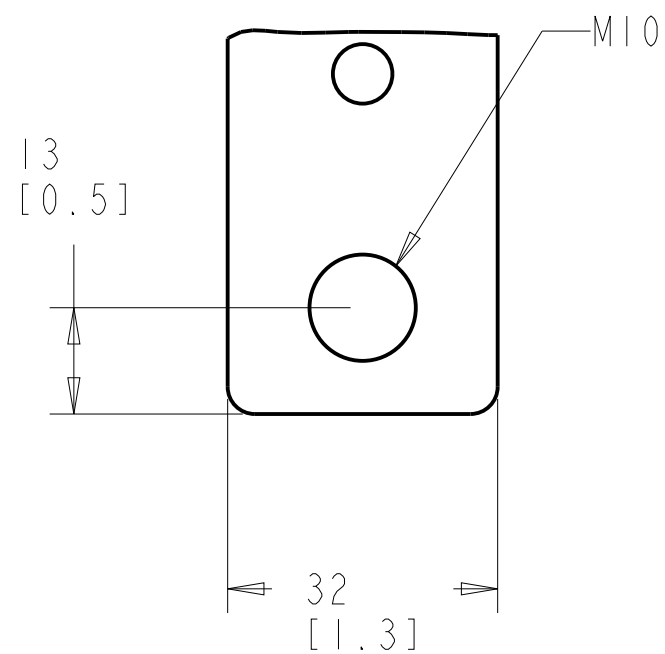
EARTHING / GROUNDING CONNECTIONS



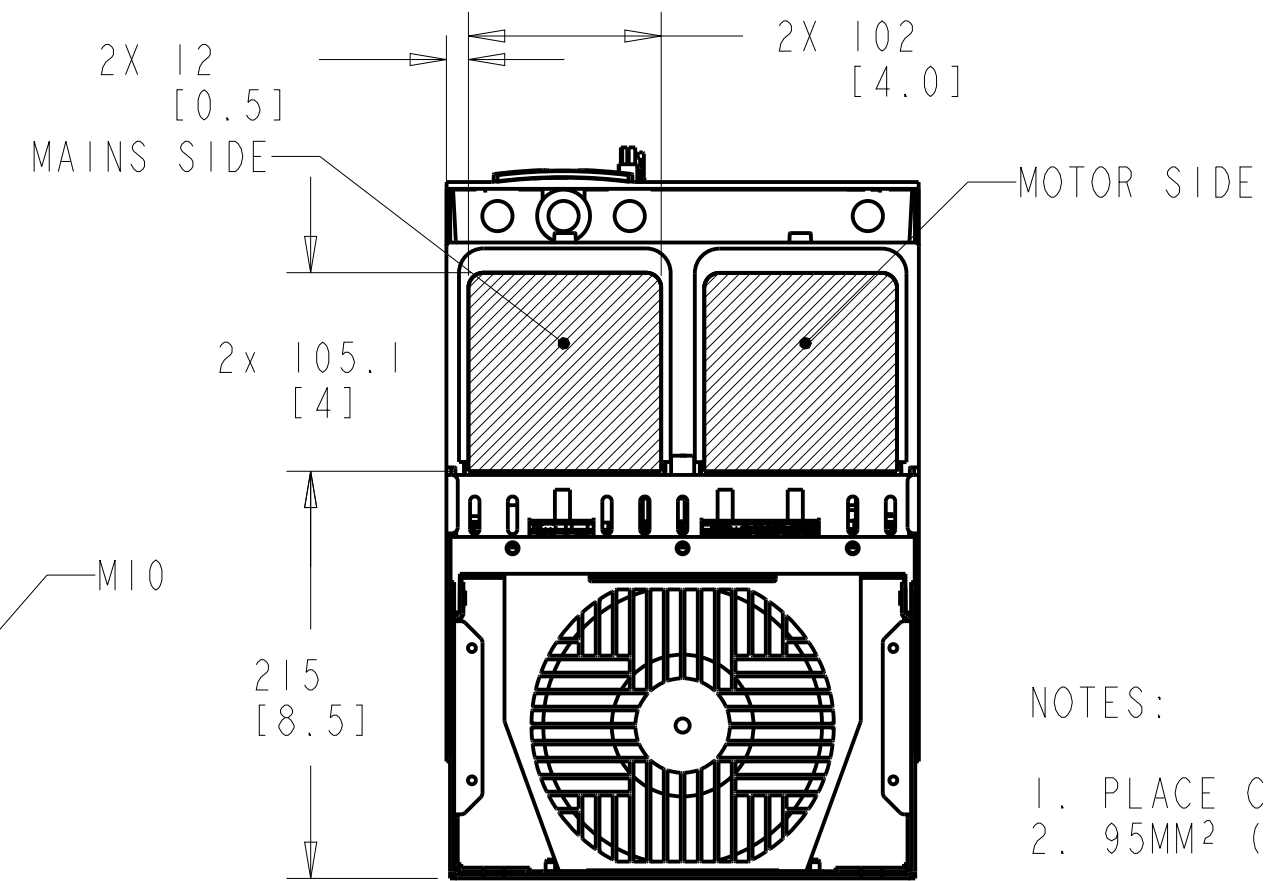
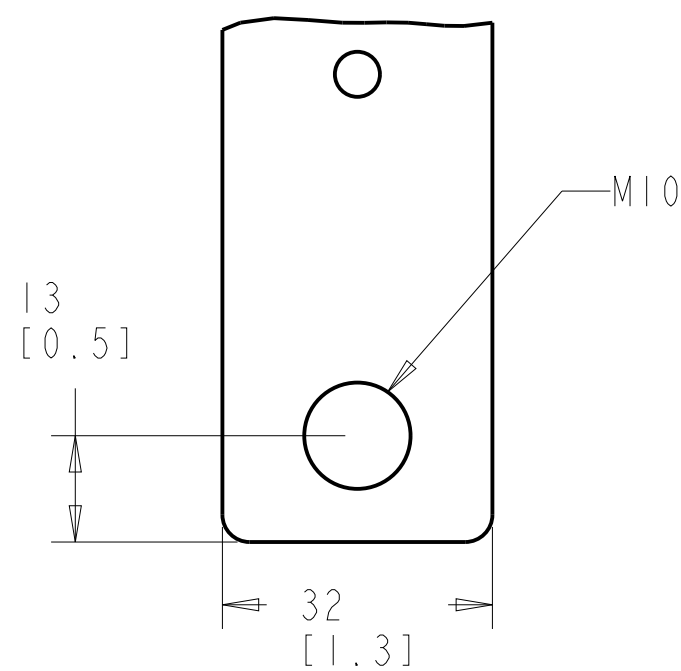
BOTTOM BRAKE / REGEN
TERMINAL



MAINS TERMINAL



MOTOR TERMINAL



NOTES:

- 1. PLACE CABLES THROUGH MARKED AREAS
- 2. 95MM² (3/0) MAX WIRE SIZE

TITLE		
INSTALLATION DRAWING, D3H, IP20/CHASSIS		
SIZE	MODEL	REV
C		PI
SCALE	DRAWING NO.	SHEET
0.250	177R0339	2 OF 3

THE TABLES BELOW MAY BE USED TO CONFIRM THE CORRECT FRAME SIZE AND DRAWING FOR A SPECIFIC DRIVE RATING (POWER AND VOLTAGE). THIS DRAWING IS FOR D4H FRAMES, THE TABLES BELOW IDENTIFY WHICH DRIVES ARE REPRESENTED BY THIS DRAWING.

THE TABLE BELOW CAN BE USED TO DETERMINE THE FRAME SIZE IF THE SPECIFIC MODEL/TYPECODE IS KNOWN.

KW RATED DRIVES					
KW HIGH OVERLOAD	75	90	110	132	160
KW NORMAL OVERLOAD	90	110	132	160	200
400V		D3H	D3H	D3H	
500V			D3H	D3H	D3H
525V	D3H	D3H	D3H		
690V		D3H	D3H	D3H	

HORSEPOWER RATED DRIVES				
HP HIGH OVERLOAD	100	125	150	200
HP NORMAL OVERLOAD	125	150	200	250
460V		D3H	D3H	D3H
575V	D3H	D3H	D3H	D3H

PLATFORM	VOLTAGE	MODEL/TYPECODE	FRAME(IP20)
HVAC	T4	FC-102N110T4	D3H
		FC-102N132T4	
		FC-102N160T4	
	T7	FC-102N110T7	
		FC-102N132T7	
		FC-102N160T7	
AQUA	T4	FC-202N110T4	
		FC-202N132T4	
		FC-202N160T4	
	T7	FC-202N110T7	
		FC-202N132T7	
		FC-202N160T7	
AUTOMATION	T5	FC-302N90KT5	
		FC-302N110T5	
		FC-302N132T5	
	T7	FC-302N90KT7	
		FC-302N110T7	
		FC-302N132T7	

TITLE			
INSTALLATION DRAWING, D3H, IP20/CHASSIS			
SIZE	MODEL	REV	PI
C			
SCALE	DRAWING NO.	SHEET	
0.175	177R0339	3 OF 3	