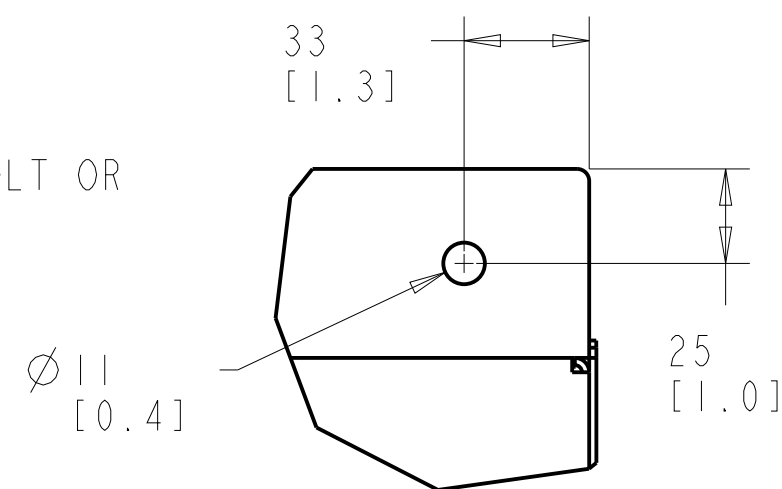
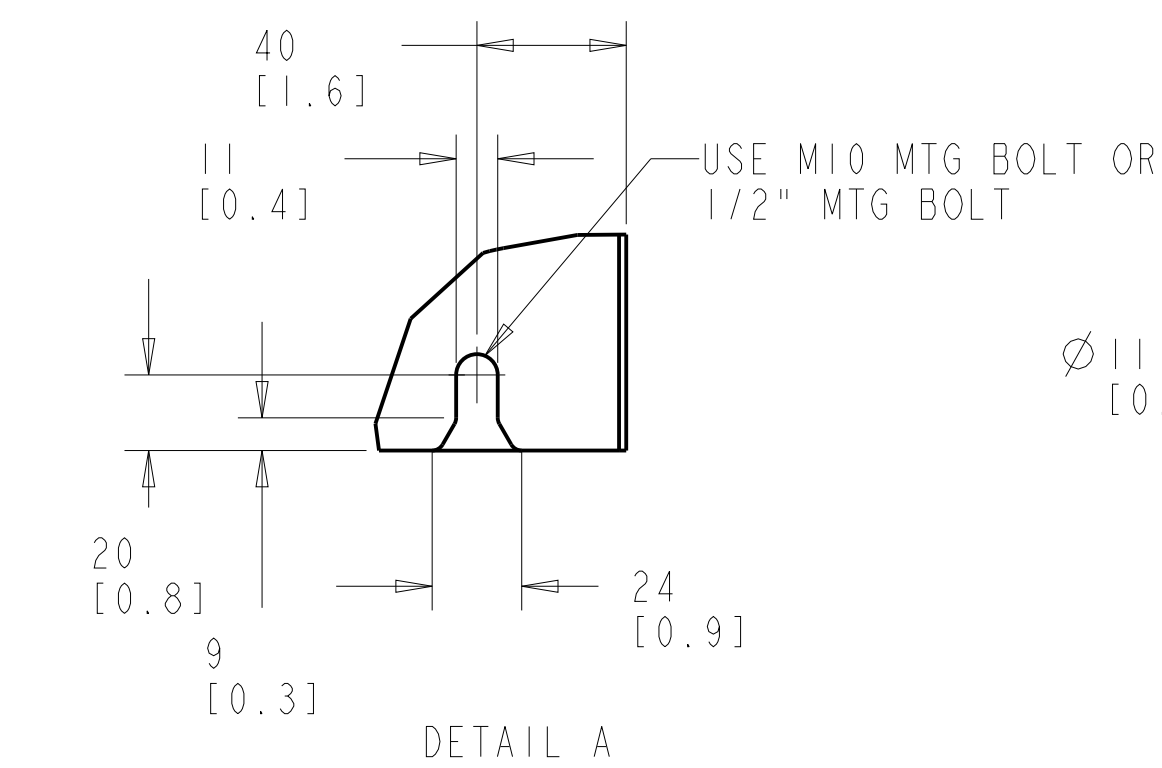
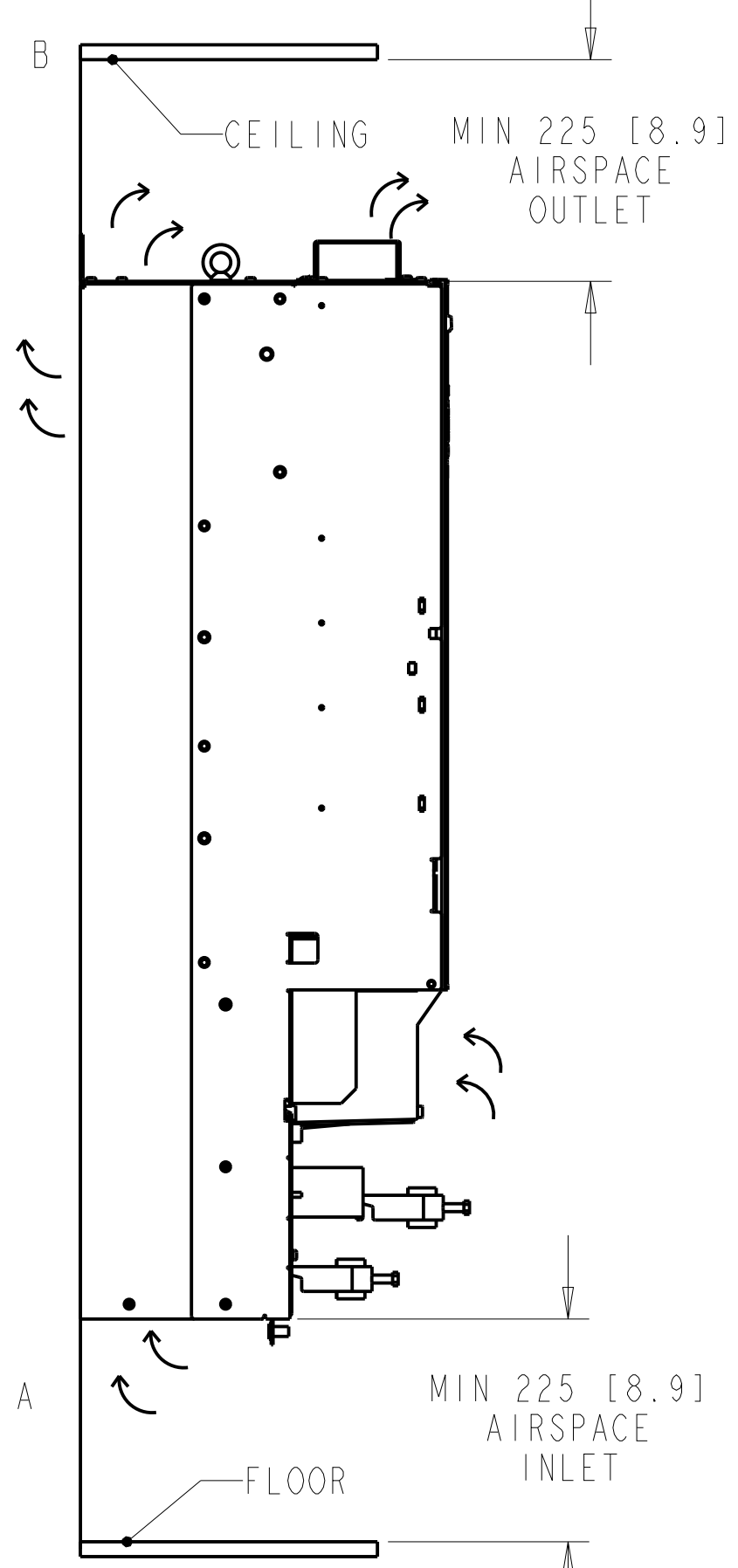
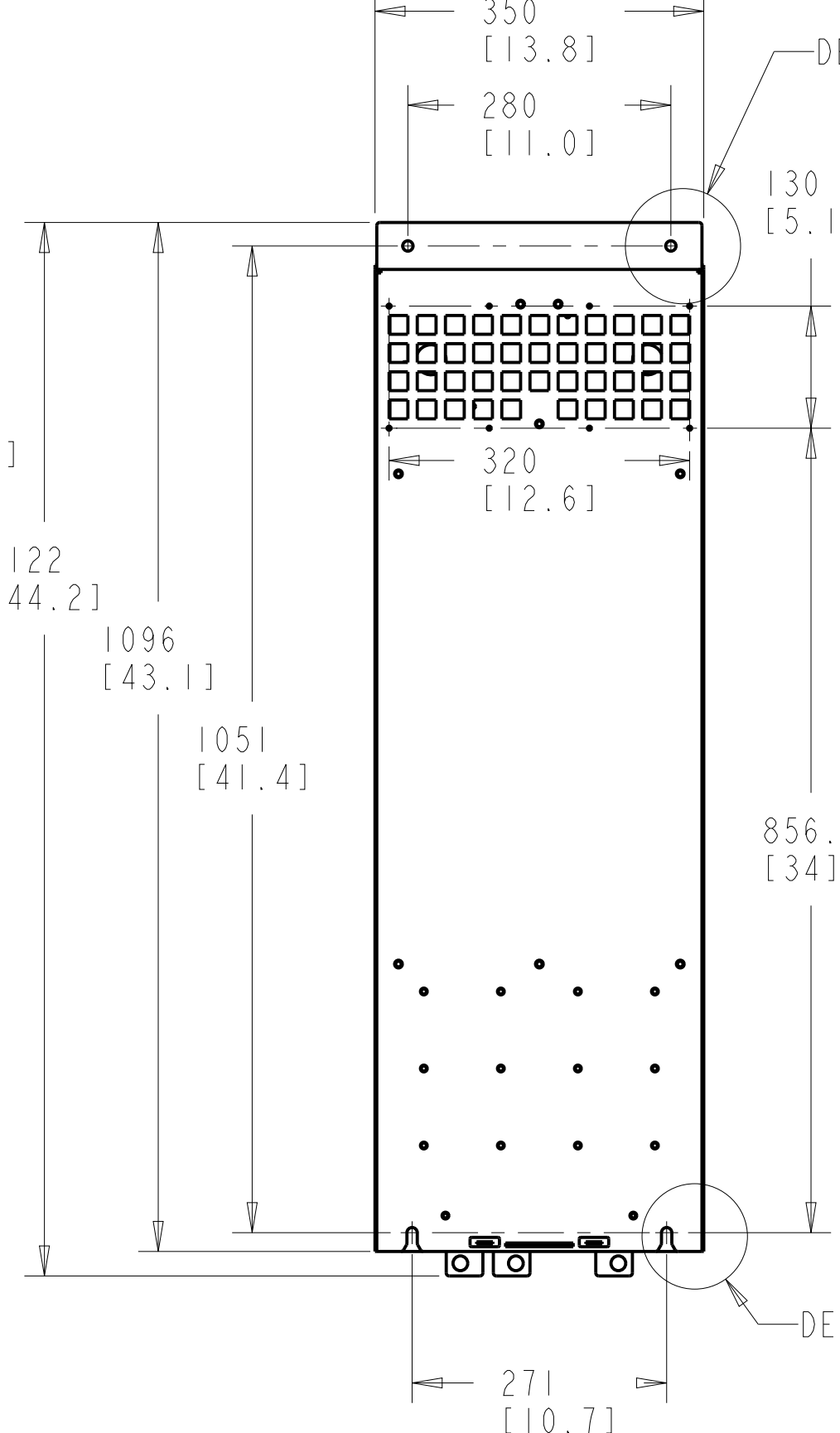
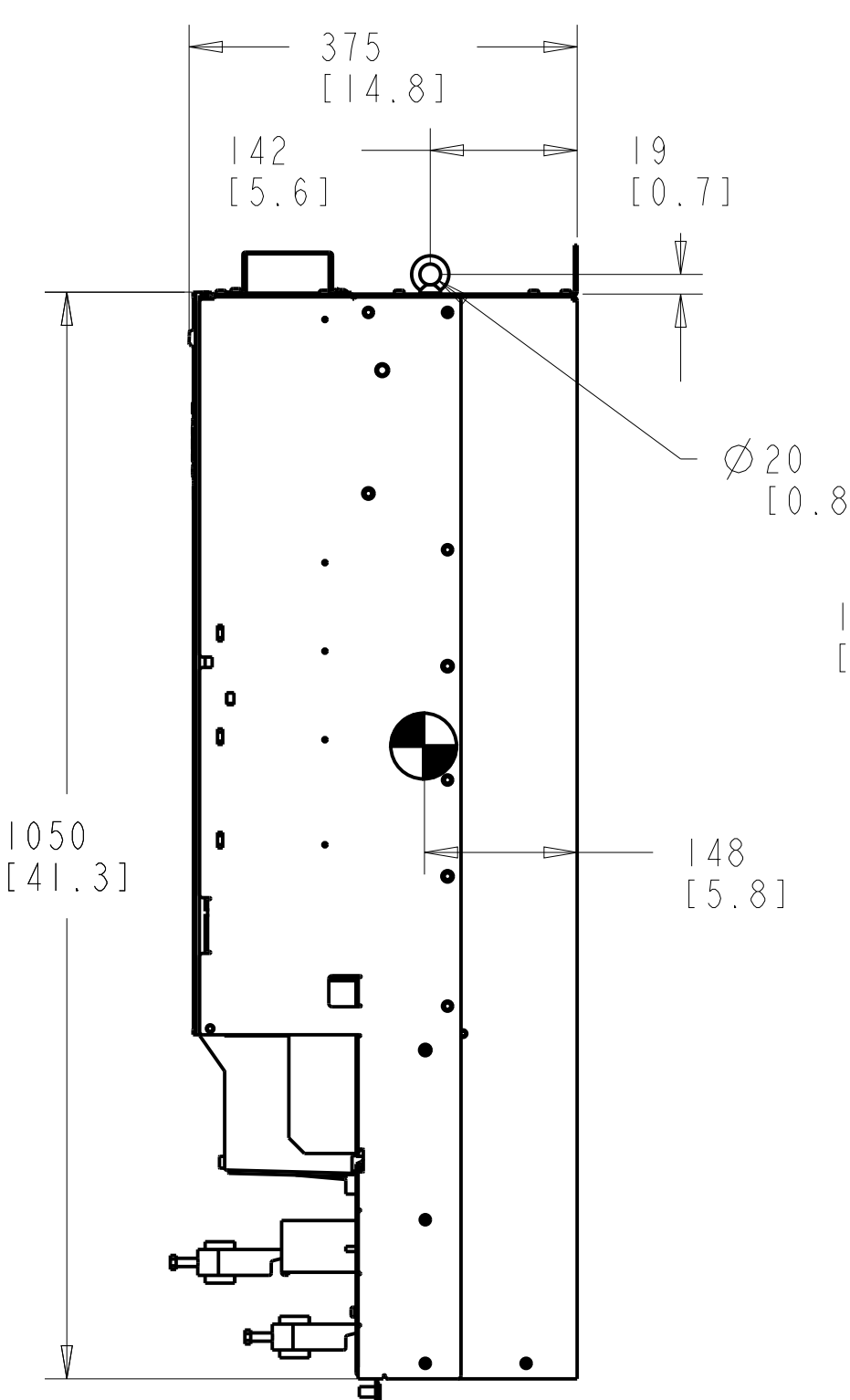
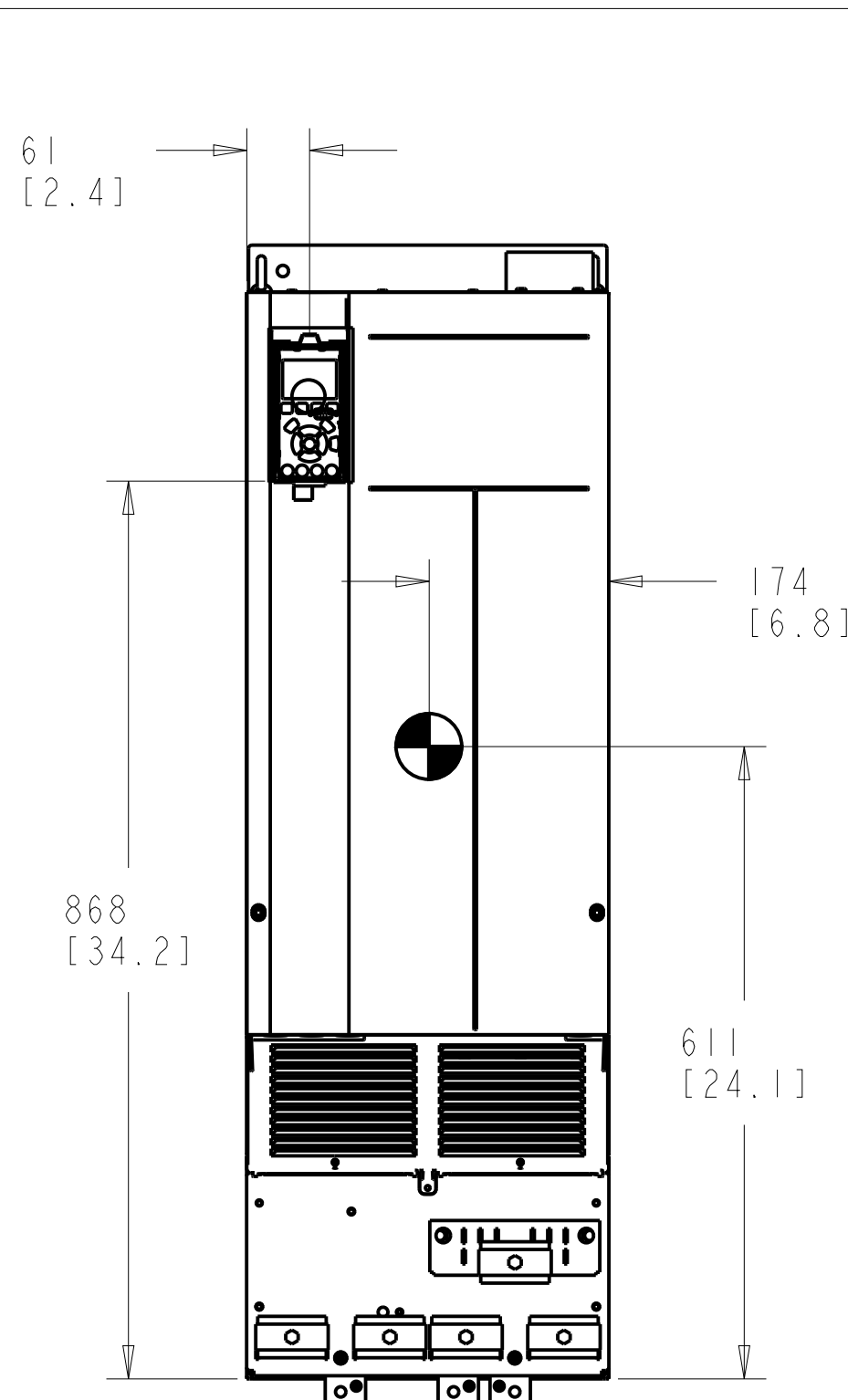


- NOTICE -

THIS DOCUMENT CONTAINS PROPRIETARY INFORMATION OF DANFOSS DRIVES. IT IS LOANED BY DANFOSS DRIVES SUBJECT TO THE CONDITIONS THAT IT AND THE INFORMATION EMBODIED THEREIN SHALL BE USED ONLY FOR RECORD AND REFERENCE PURPOSES. SHALL NOT BE USED OR CAUSED TO BE USED IN ANY WAY PREJUDICIAL TO THE INTERESTS OF DANFOSS DRIVES. SHALL NOT BE REPRODUCED OR COPIED IN WHOLE OR IN PART OR DISCLOSED TO ANYONE WITHOUT THE DIRECT WRITTEN PERMISSION OF DANFOSS DRIVES, AND SHALL BE RETURNED UPON REQUEST.

REVISION HISTORY

REV	ECN NUMBER	ENTRY BY	DATE
PI	PRELIMINARY	ND	07/19/11



1. MAX AIRFLOW (BACKCHANNEL) - 14 M³/MIN (500 CFM)
2. MAX AIRFLOW (CABINET) - 3.4 M³/MIN (120 CFM)
3. MAX WEIGHT = 125 KG (275 LBS)
4. CENTER OF GRAVITY:
APPROXIMATE LOCATION ONLY, LOCATION MAY VARY BASED ON POWER RATING AND OPTIONS ORDERED.

PRELIMINARY RELEASE

UNLESS OTHERWISE SPECIFIED INTERPRET DIM AND TOL PER ASME Y14.5M-1994	PROPERTIES		
	MATERIAL	N/A	
FINISH	N/A		
THICKNESS	N/A		
EST WEIGHT	125		
THIRD ANGLE PROJECTION	APPROVALS	INITIALS	DATE
	DRAWN	CCN	06/16/11
	CHECKED		
	ENGR		

Danfoss
4401 N. BELL SCHOOL RD. LOVES PARK, ILLINOIS 61111 USA
(815) 639-8600 FAX (815) 639-8000

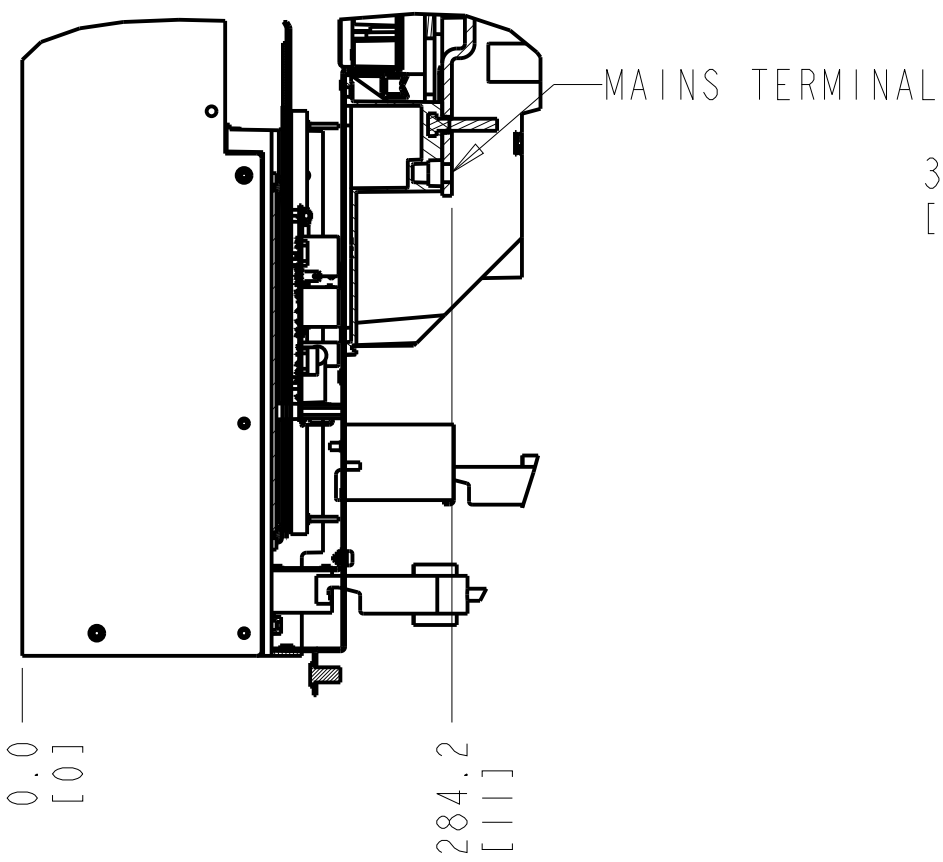
TITLE: INSTALLATION DRAWING, D4H, 1P20/CHASSIS

SIZE: C
SCALE: 0.150

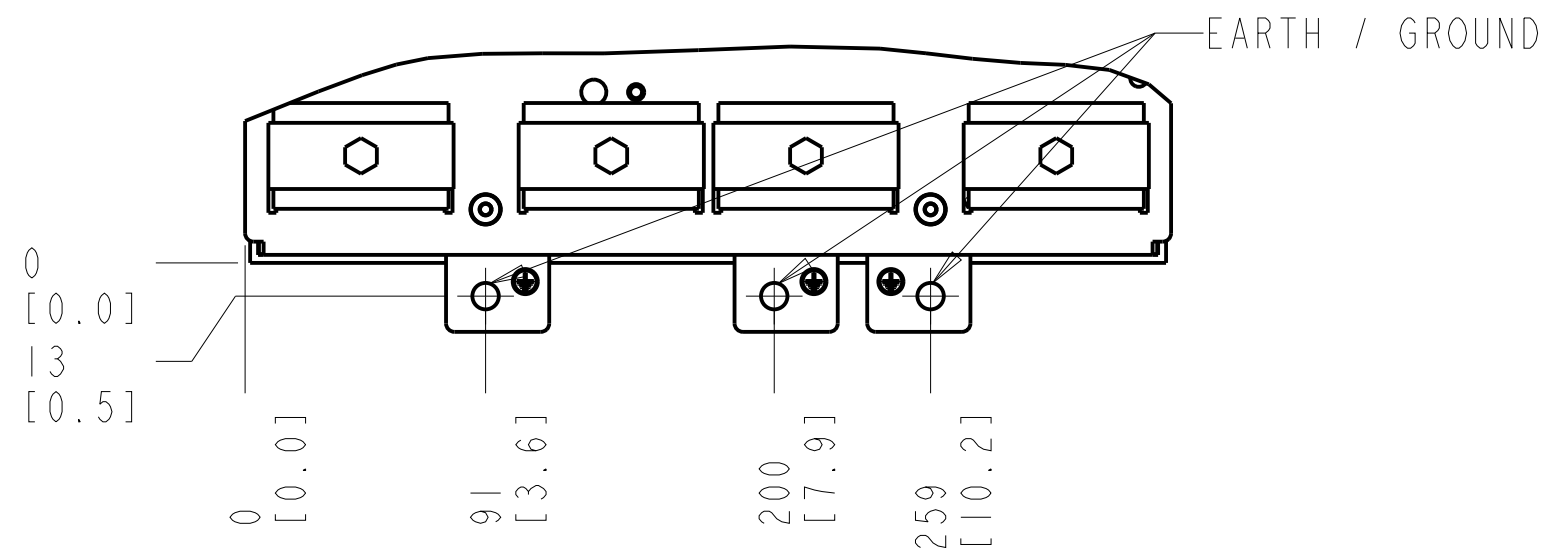
MODEL: 177R0340

REV: PI
SHEET: 1 OF 3

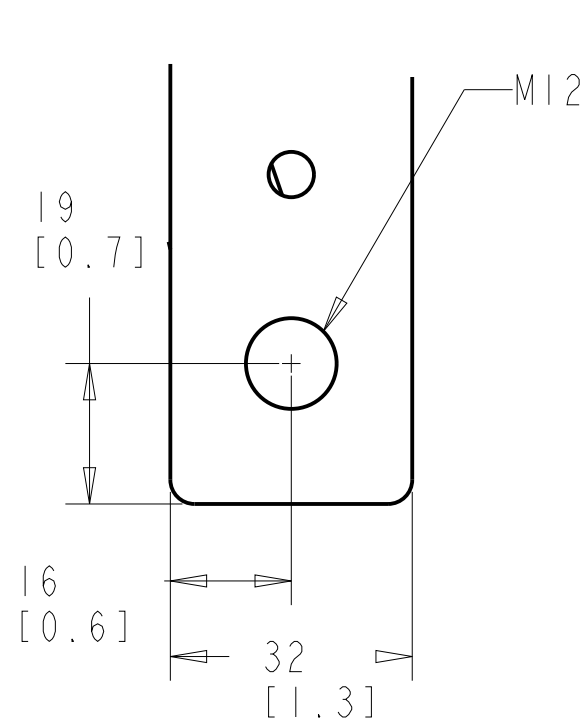
SECTION D-D
MAINS TERMINALS



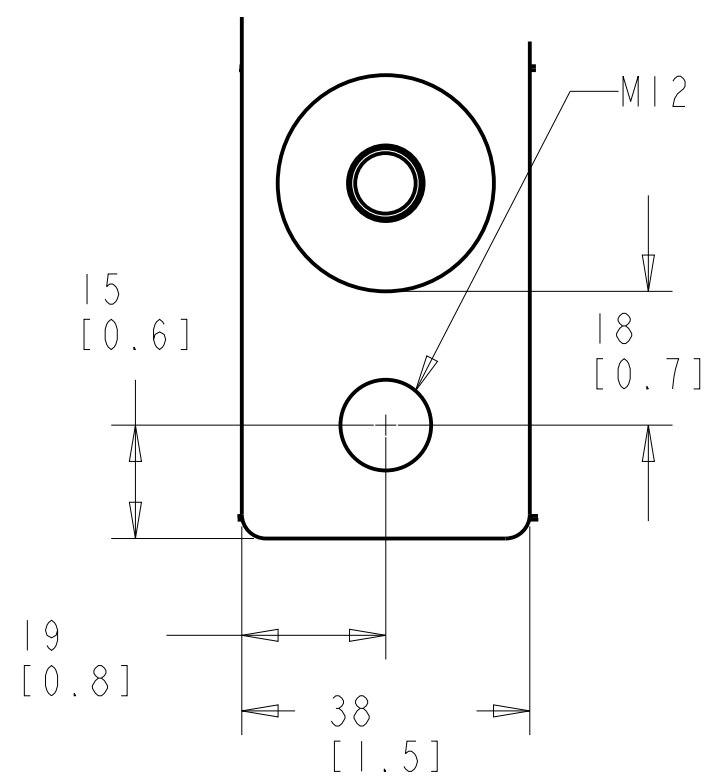
EARTHING / GROUNDING CONNECTIONS



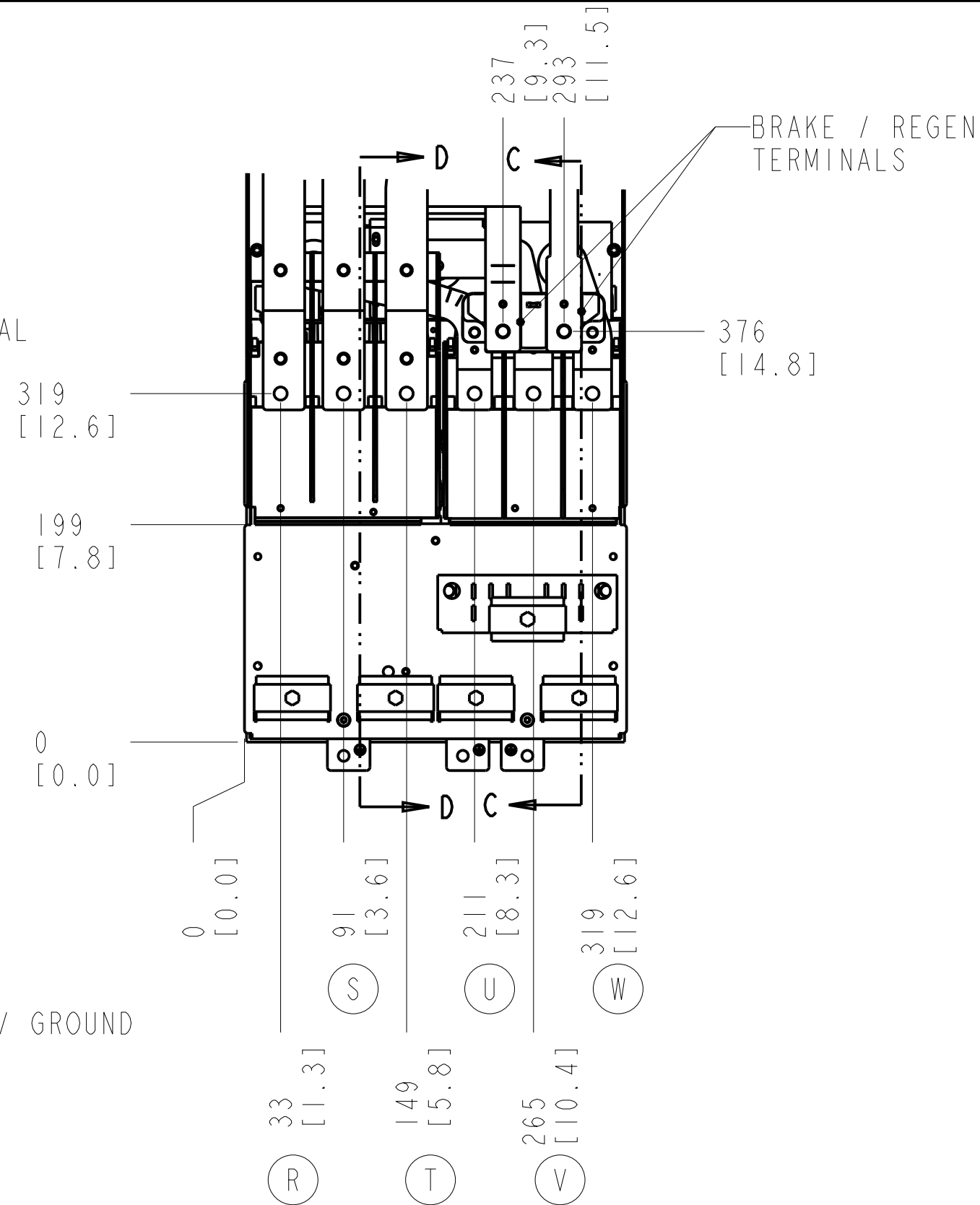
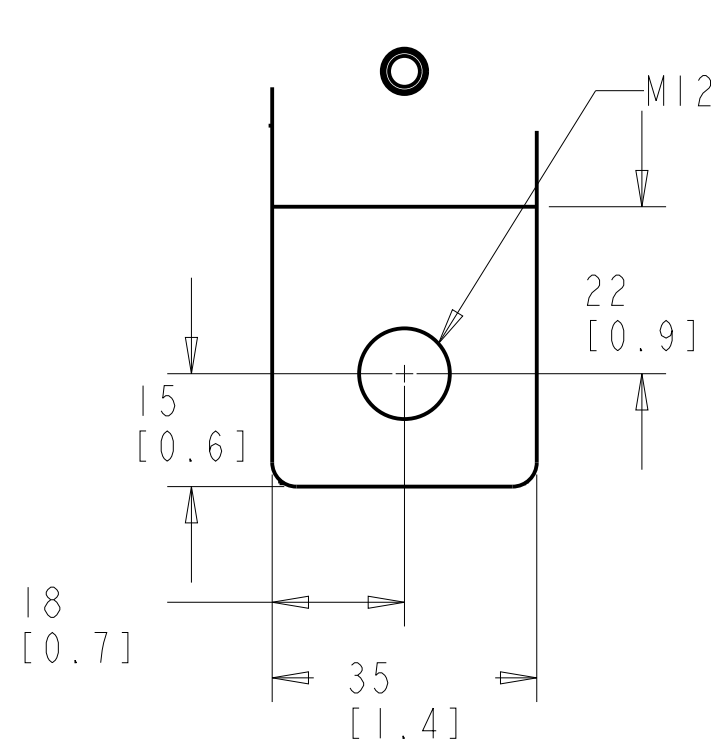
BRAKE / REGEN TERMINAL



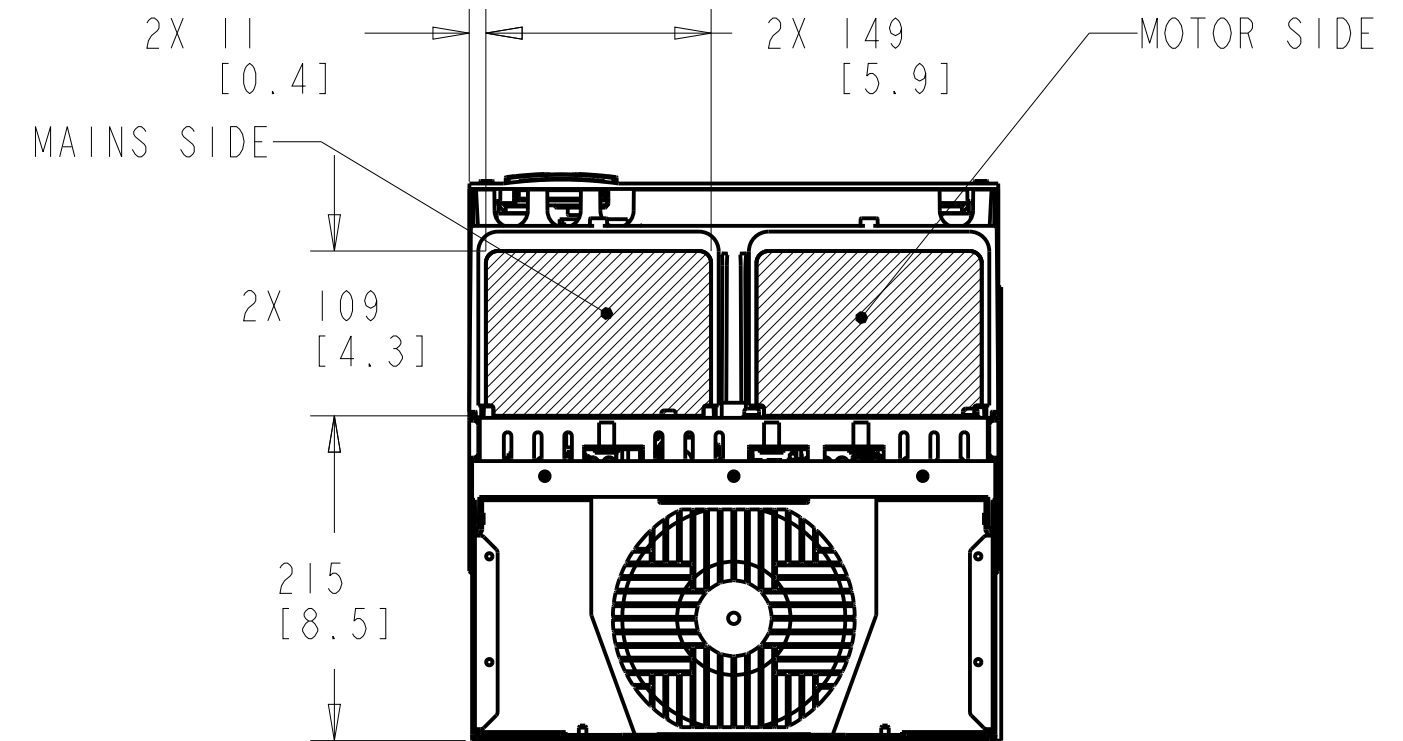
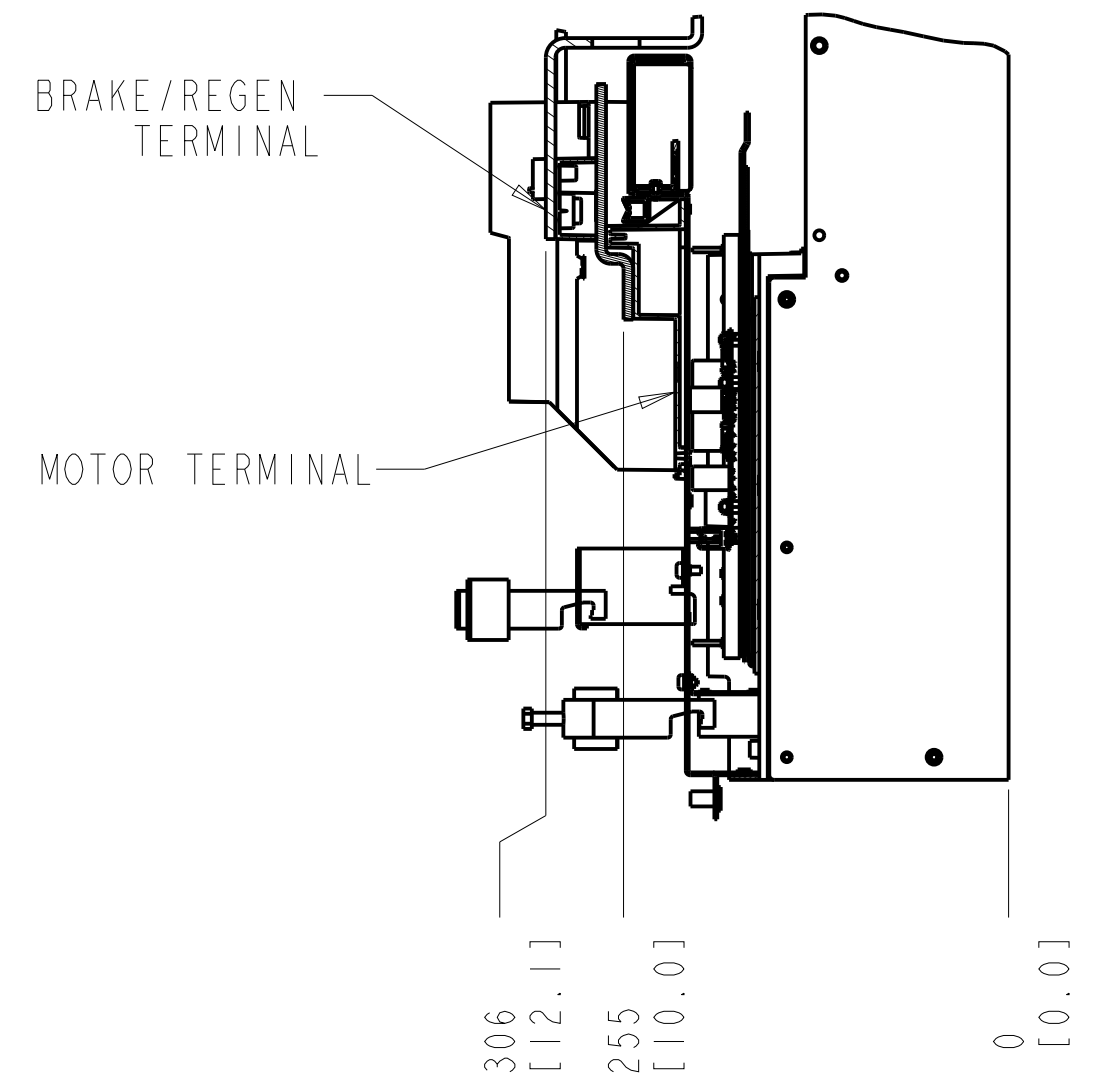
MAINS TERMINAL



MOTOR TERMINAL



SECTION C-C
MOTOR TERMINALS AND
BRAKE / REGEN TERMINALS



BOTTOM VIEW

NOTES:

- 1. PLACE CABLES THROUGH MARKED AREAS
- 2. 95MM² (3/0) MAX WIRE SIZE

TITLE		
INSTALLATION DRAWING, D4H, IP20/CHASSIS		
SIZE	MODEL	REV
C		PI
SCALE	DRAWING NO.	SHEET
0.200	177R0340	2 OF 3

THE TABLES BELOW MAY BE USED TO CONFIRM THE CORRECT FRAME SIZE AND DRAWING FOR A SPECIFIC DRIVE RATING (POWER AND VOLTAGE). THIS DRAWING IS FOR D4H FRAMES, THE TABLES BELOW IDENTIFY WHICH DRIVES ARE REPRESENTED BY THIS DRAWING.

KW RATED DRIVES						
KW HIGH OVERLOAD	132	160	200	250	315	315
KW NORMAL OVERLOAD	160	200	250	315	355	400
400V		D4H	D4H	D4H		
500V			D4H	D4H	D4H	
525V	D4H	D4H	D4H	D4H		
690V		D4H	D4H	D4H		D4H

HORSEPOWER RATED DRIVES					
HP HIGH OVERLOAD	200	250	300	350	350
HP NORMAL OVERLOAD	250	300	350	400	450
460V		D4H	D4H		D4H
575V	D4H	D4H	D4H	D4H	

THE TABLE BELOW CAN BE USED TO DETERMINE THE FRAME SIZE IF THE SPECIFIC MODEL/TYPECODE IS KNOWN.

PLATFORM	VOLTAGE	MODEL/TYPECODE	FRAME(IP20)
HVAC	T4	FC-102N200T4	D4H
		FC-102N250T4	
		FC-102N315T4	
	T7	FC-102N200T7	
		FC-102N250T7	
		FC-102N315T7	
AQUA	T4	FC-202N200T4	
		FC-202N250T4	
		FC-202N315T4	
	T7	FC-202N200T7	
		FC-202N250T7	
		FC-202N315T7	
AUTOMATION	T5	FC-302N160T5	
		FC-302N200T5	
		FC-302N250T5	
	T7	FC-302N160T7	
		FC-302N200T7	
		FC-302N250T7	

TITLE			
INSTALLATION DRAWING, D4h, IP20/CHASSIS			
SIZE	MODEL	REV	PI
C			
SCALE	DRAWING NO.	SHEET	3 OF 3
0.150	177R0340		