

REVISION	VERSION
DRAWING	

UNLESS OTHERWISE SPECIFIED ALL DIMENSIONS ARE IN INCHES. TOLERANCE:

X ± 0.1
 XX ± 0.03
 XXX ± 0.005

FINISH ✓

ANGLES ± 2.0° HOLE DIA = +

CONFORMS TO ASME Y14.5M-1994.

TRANE

THIS DRAWING IS PROPRIETARY AND SHALL NOT BE COPIED OR ITS CONTENTS DISCLOSED TO OUTSIDE PARTIES WITHOUT THE WRITTEN CONSENT OF TRANE

DRAWN BY: DK TRANE DATE: 03/28/11

DO NOT SCALE PRINT THIRD ANGLE PROJECTION

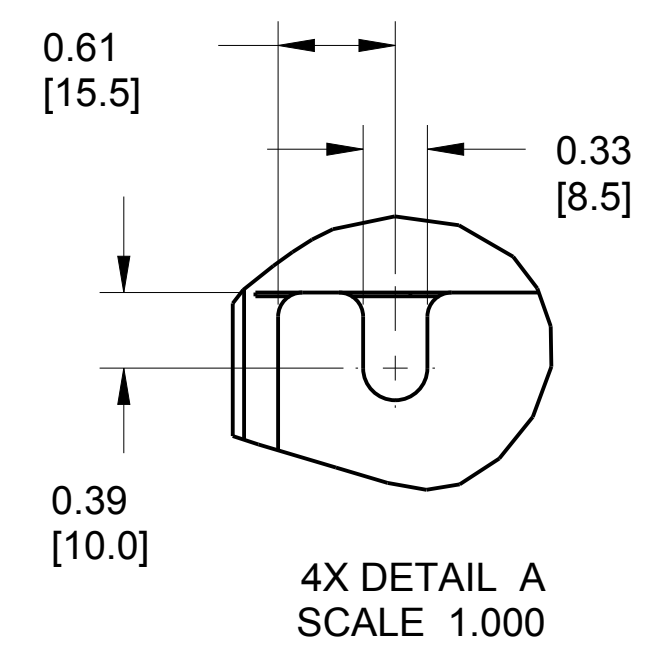
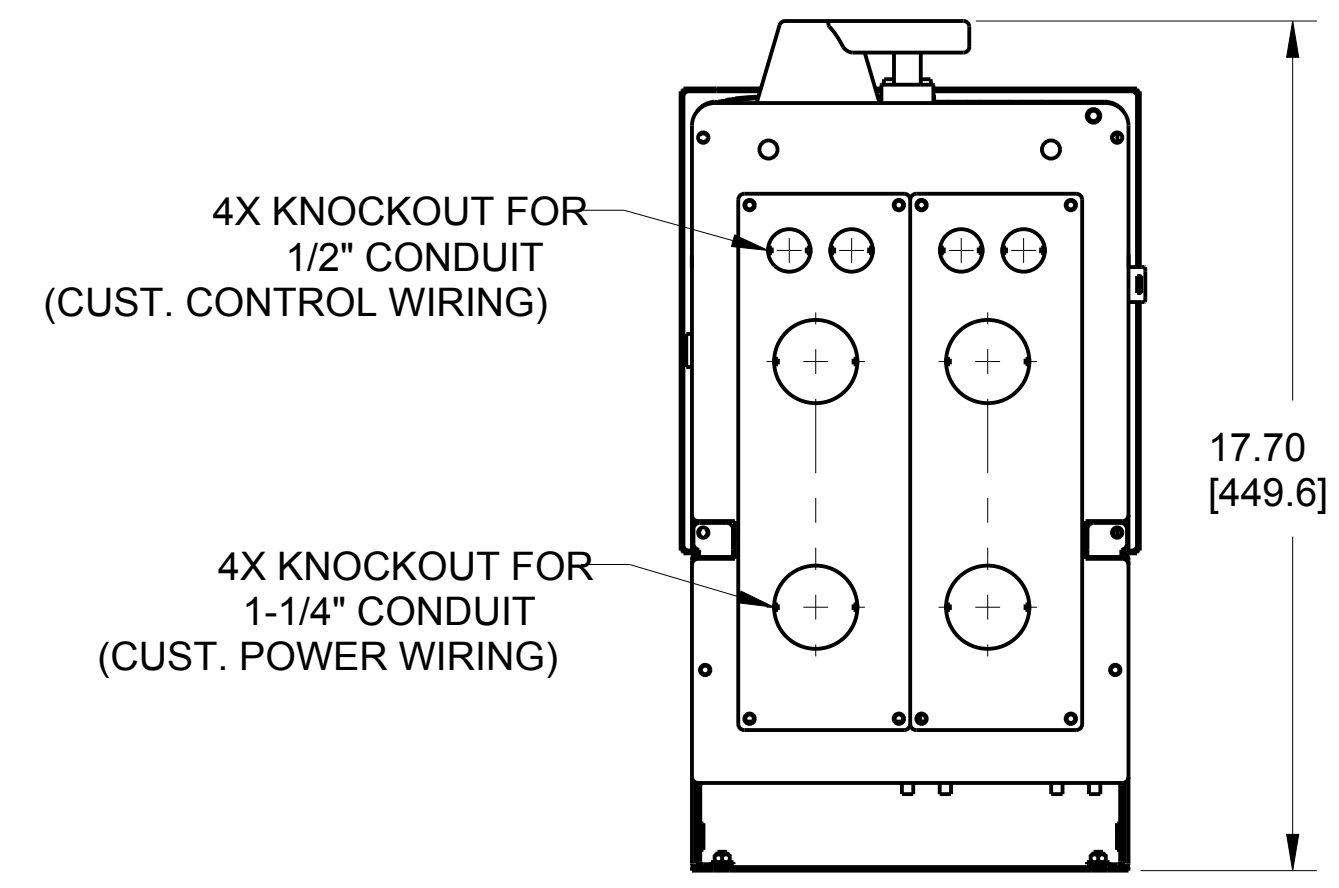
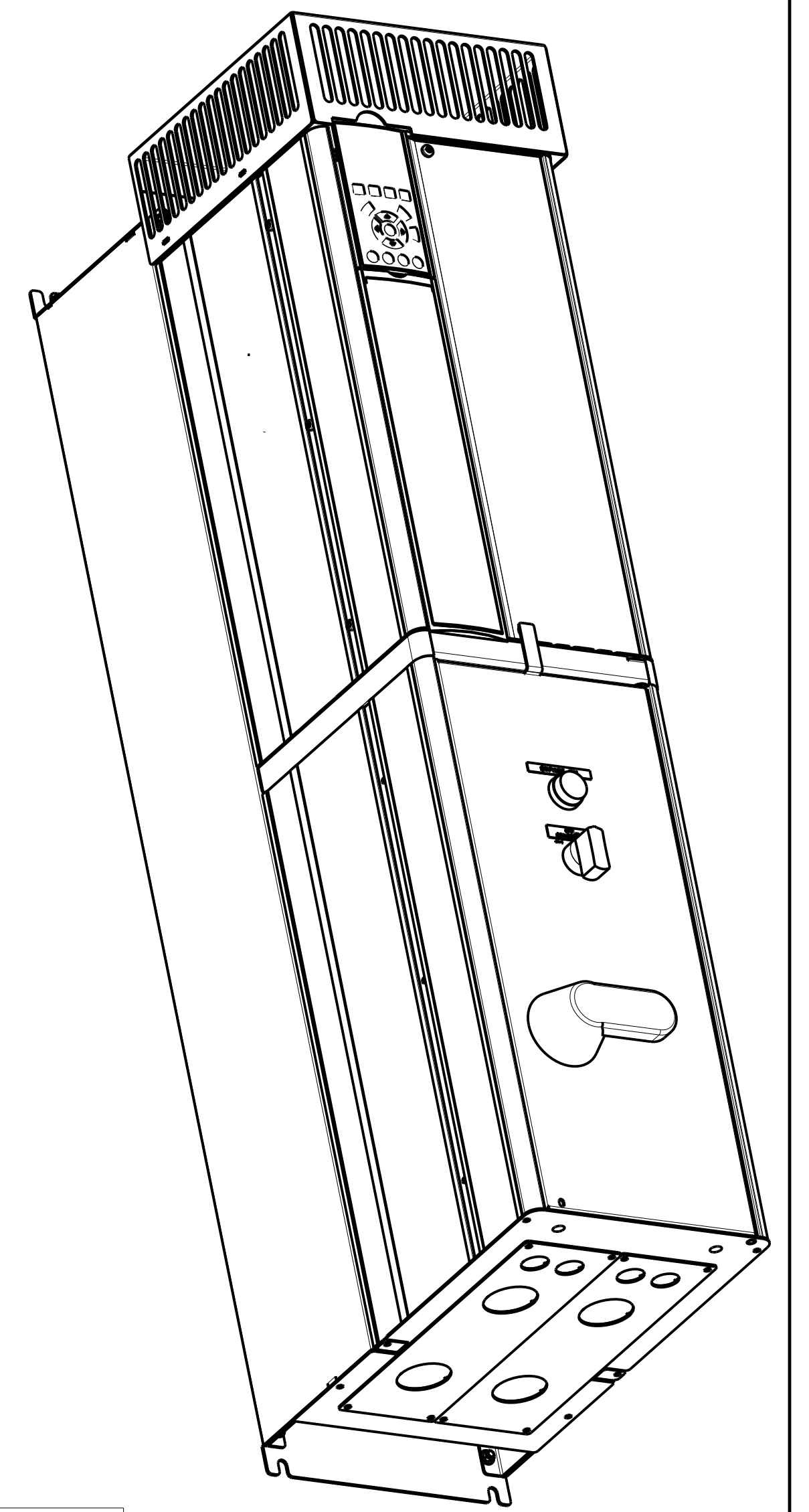
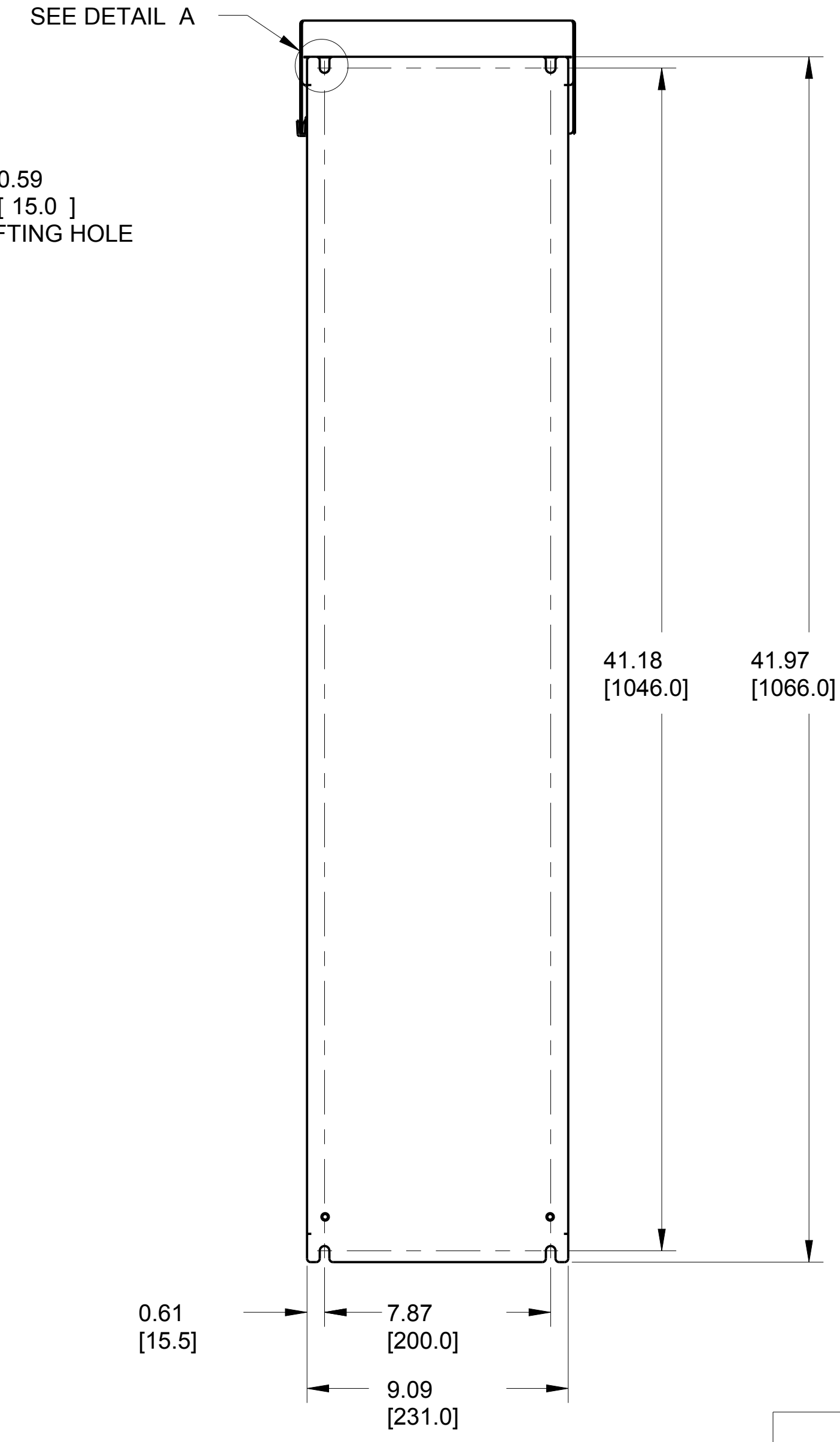
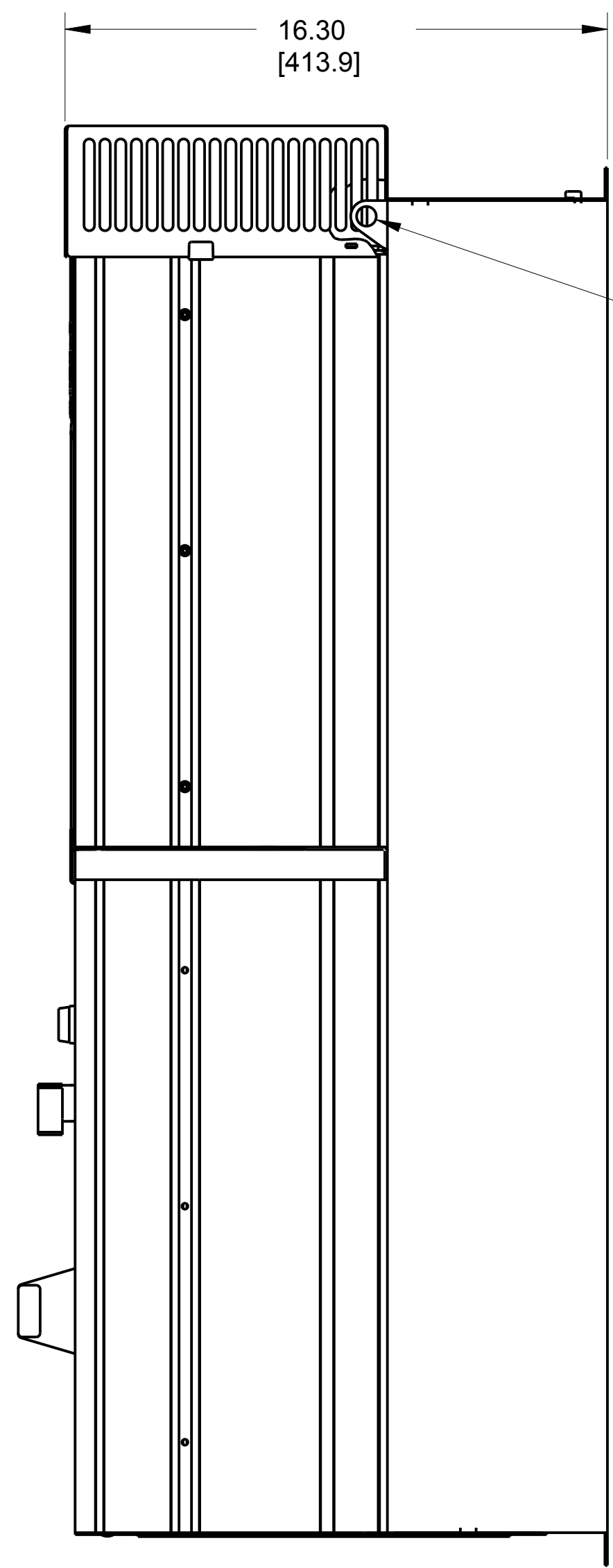
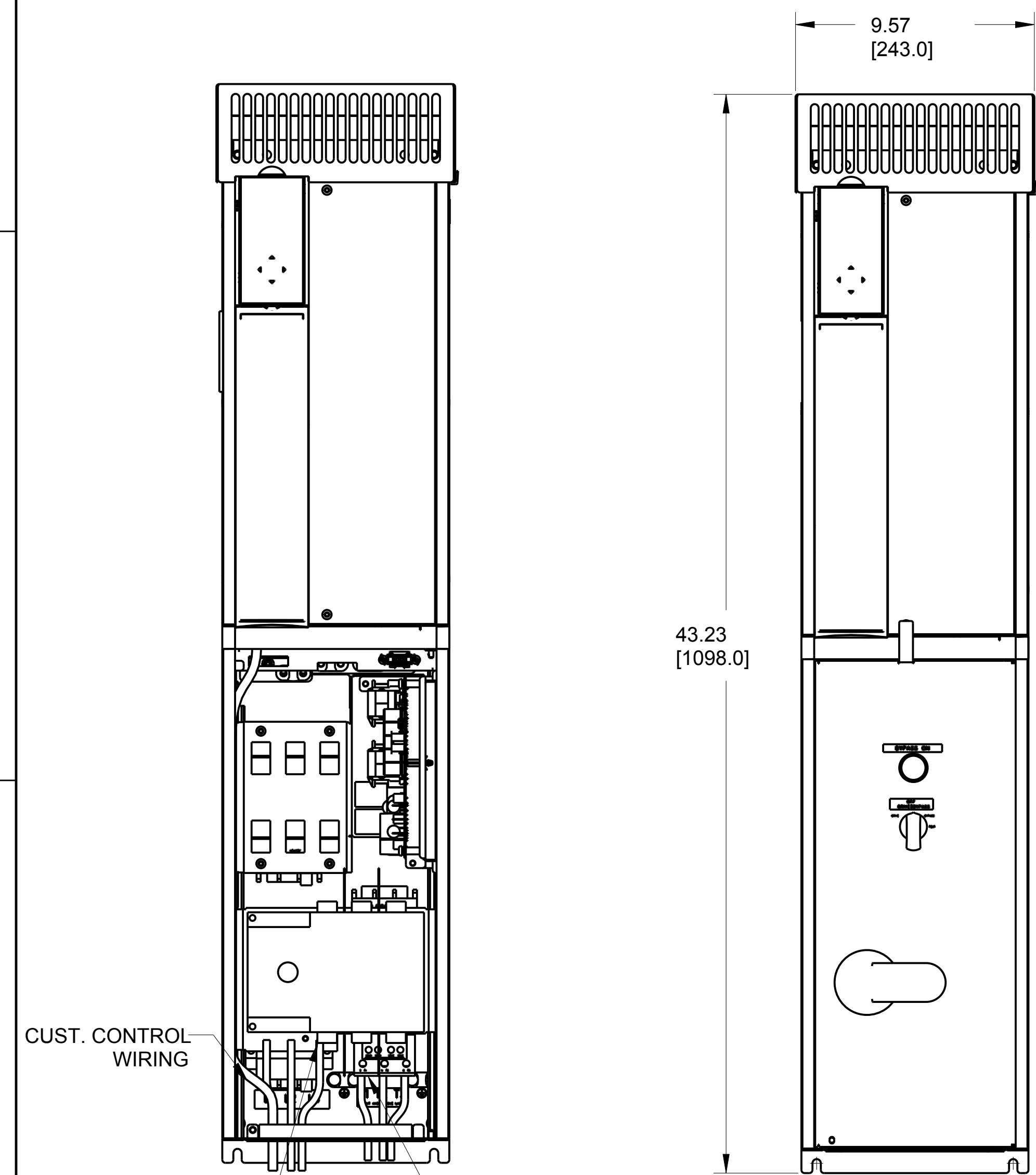
177R0344 SHEET 1 OF 1 REV 003

DWG.SUBMITTAL.P3.BYPASS.TRANE

CLEARANCE REQUIREMENT FOR AIR FLOW COOLING:

THE UNIT MUST BE INSTALLED VERTICALLY WITH THE MINIMUM CLEARANCE OF 7.87" [200mm] ON THE BOTTOM AND 2.00" [50.8 mm] ON THE TOP FOR UNIT COOLING.

D
C
B
A



FRAME SIZE P3		
VOLTAGE	HP	KW
208	20	15
	25	18.5
460	30	22
	40	30
	50	37
575	30	22
	40	30
	50	37