

4

3

2

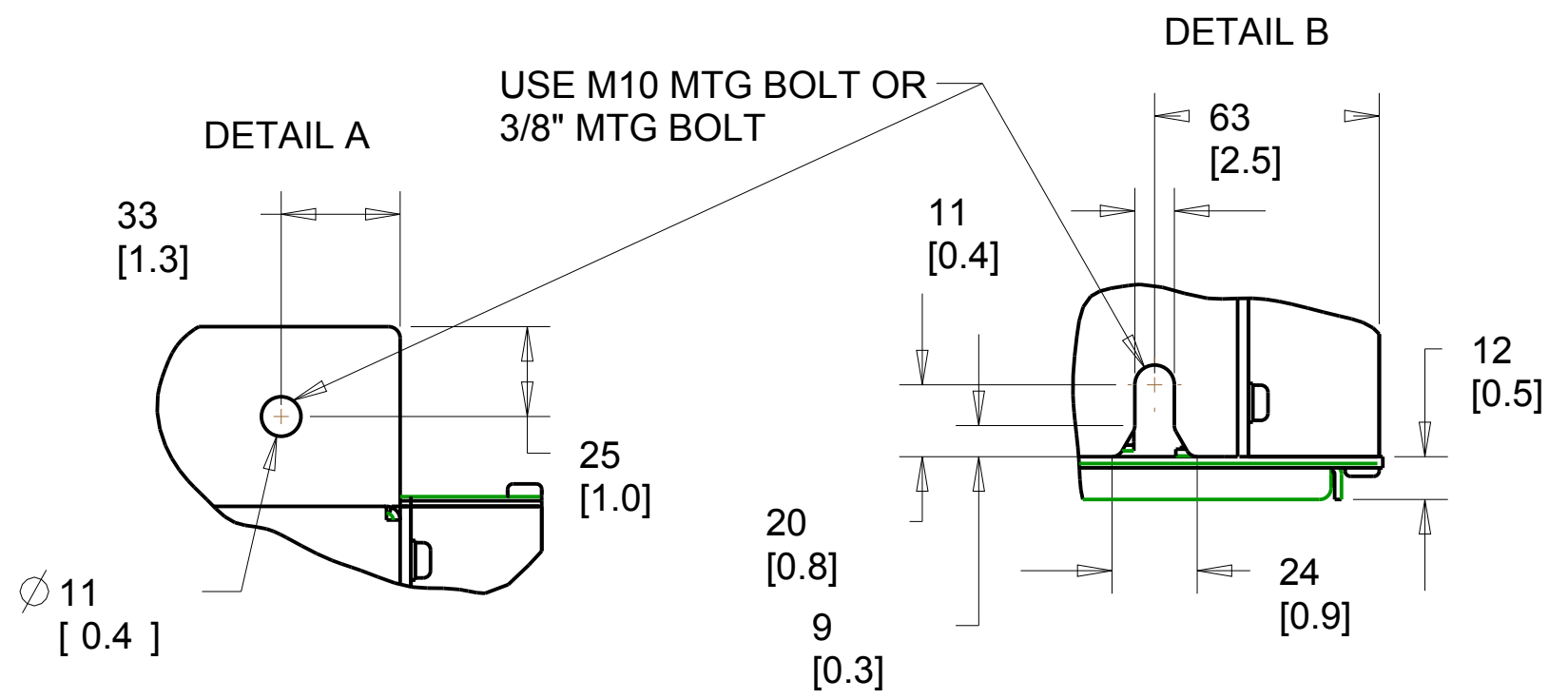
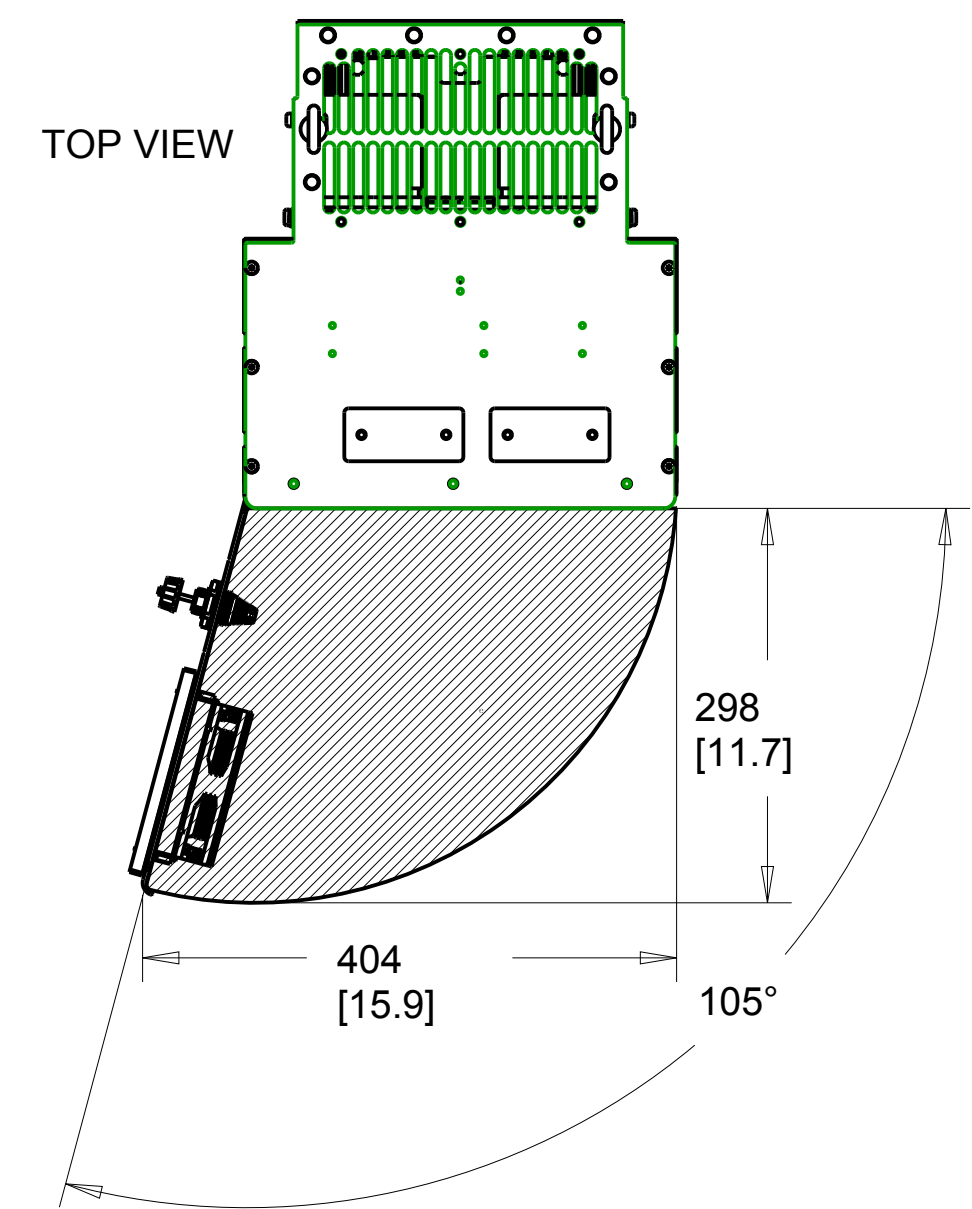
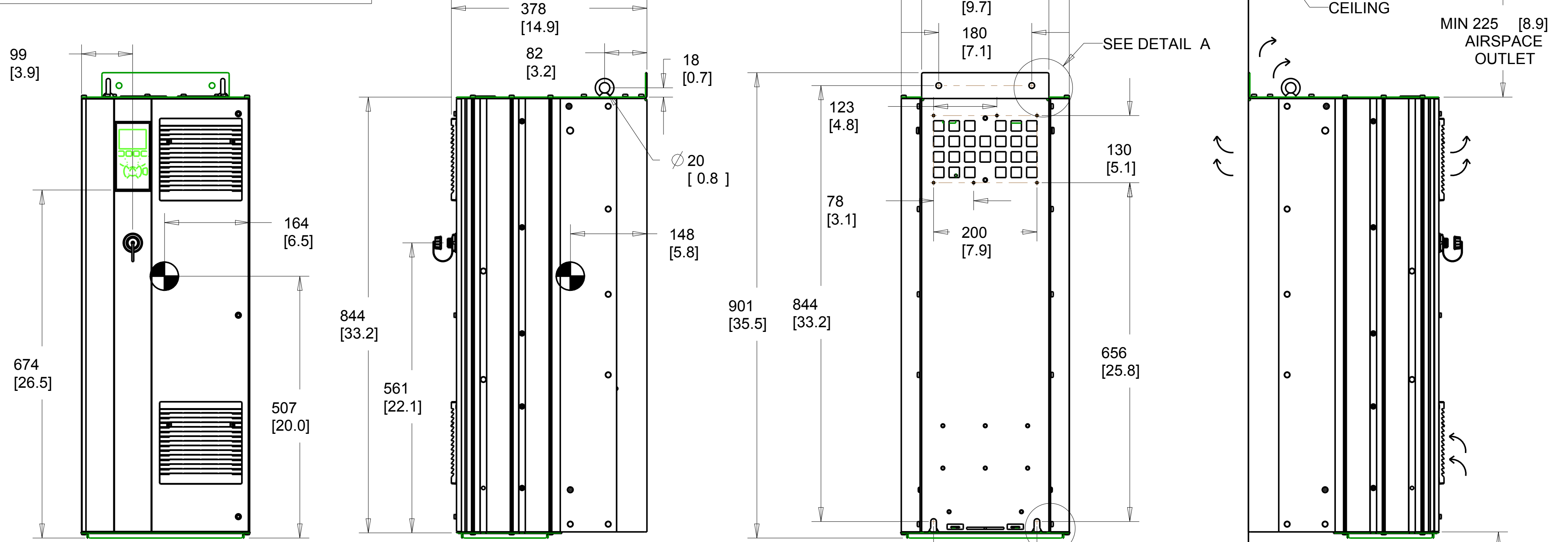
1

- NOTICE -

THIS DOCUMENT CONTAINS PROPRIETARY INFORMATION OF DANFOSS DRIVES. IT IS LOANED BY DANFOSS DRIVES SUBJECT TO THE CONDITIONS THAT IT AND THE INFORMATION EMBODIED THEREIN SHALL BE USED ONLY FOR RECORD AND REFERENCE PURPOSES, SHALL NOT BE USED OR CAUSED TO BE USED IN ANY WAY PREJUDICIAL TO THE INTERESTS OF DANFOSS DRIVES, SHALL NOT BE REPRODUCED OR COPIED IN WHOLE OR IN PART OR DISCLOSED TO ANYONE WITHOUT THE DIRECT WRITTEN PERMISSION OF DANFOSS DRIVES, AND SHALL BE RETURNED UPON REQUEST.

REVISION HISTORY

REV	ECN NUMBER	ENTRY BY	DATE
001	INITIAL RELEASE	PK	01/25/12



1. MAX AIRFLOW (BACKCHANNEL) - 7 M³ / MIN (250 CFM)
2. MAX AIRFLOW (CABINET) - 1.7 M³ / MIN (60 CFM)
3. MAX WEIGHT = 62 KG (135 LBS)
4. CENTER OF GRAVITY: APPROXIMATE LOCATION ONLY, LOCATION MAY VARY BASED ON POWER RATING AND OPTIONS ORDERED.

UNLESS OTHERWISE SPECIFIED INTERPRET DIM AND TOL.PER ASME Y14.5M-1994		PROPERTIES		
.X± 0.4 .XX± 0.2 ∠ ± 0.5		MATERIAL	N/A	
DIM.ARE IN MILLIMETERS WEIGHTS ARE IN KILOGRAMS		FINISH	N/A	
THIRD ANGLE PROJECTION		THICKNESS	N/A	
		EST.WEIGHT	62	
		APPROVALS	INITIALS	DATE
		DRAWN	CCN	06/17/11
		CHECKED		
		ENGR		
4401 N. BELL SCHOOL RD. LOVES PARK, ILLINOIS 61111 USA (815) 639-8600 FAX (815) 639-8000				
TITLE: INSTALLATION DRAWING, D1H, IP21/54				
		SIZE	MODEL	REV
		C		001
		SCALE	DRAWING NO.	SHEET
		0.175	177R0374	1 OF 3

4

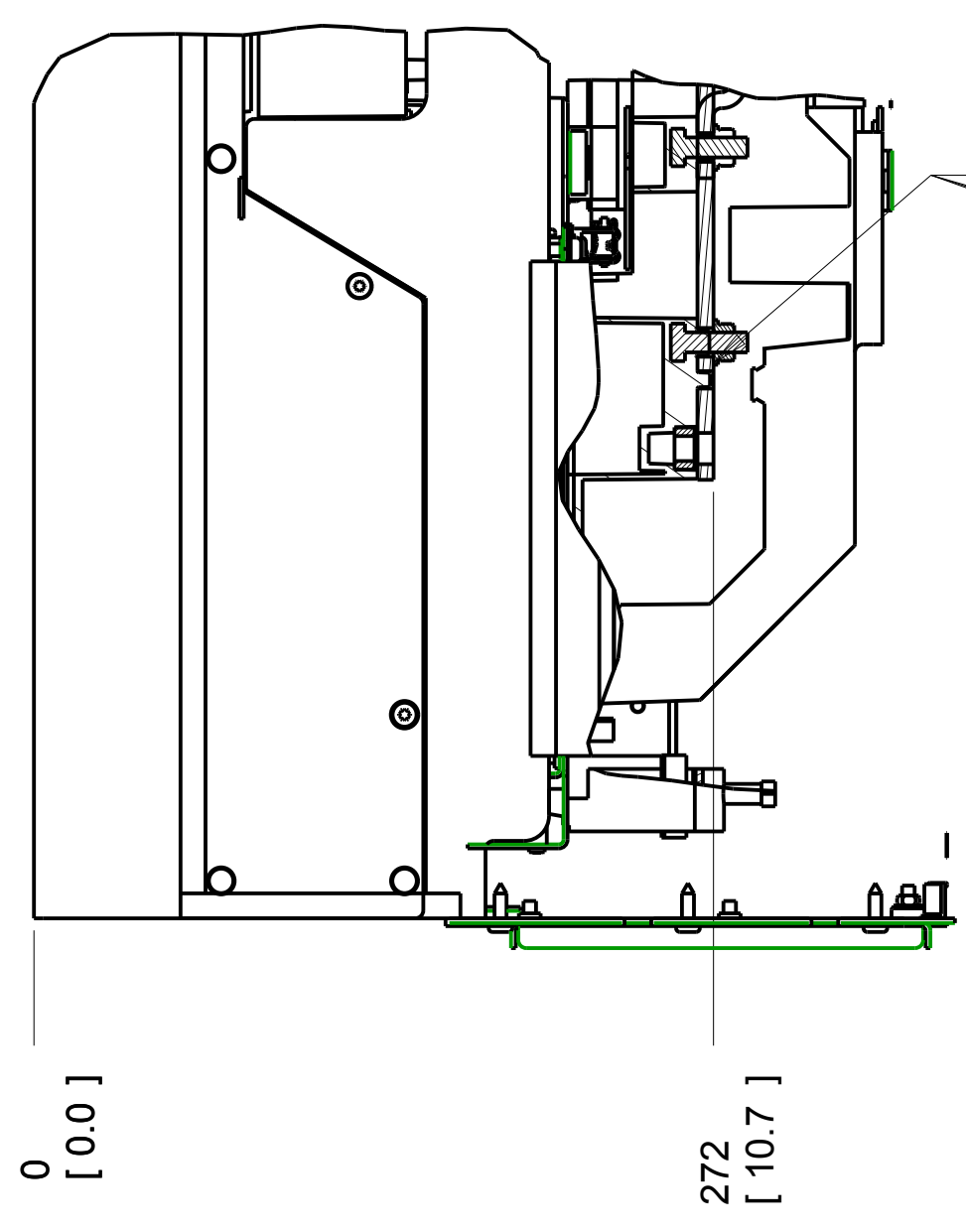
3

2

1

SECTION A-A
MAINS TERMINALS

SECTION B-B
MOTOR TERMINALS



MAINS TERMINAL

200
[7.9]

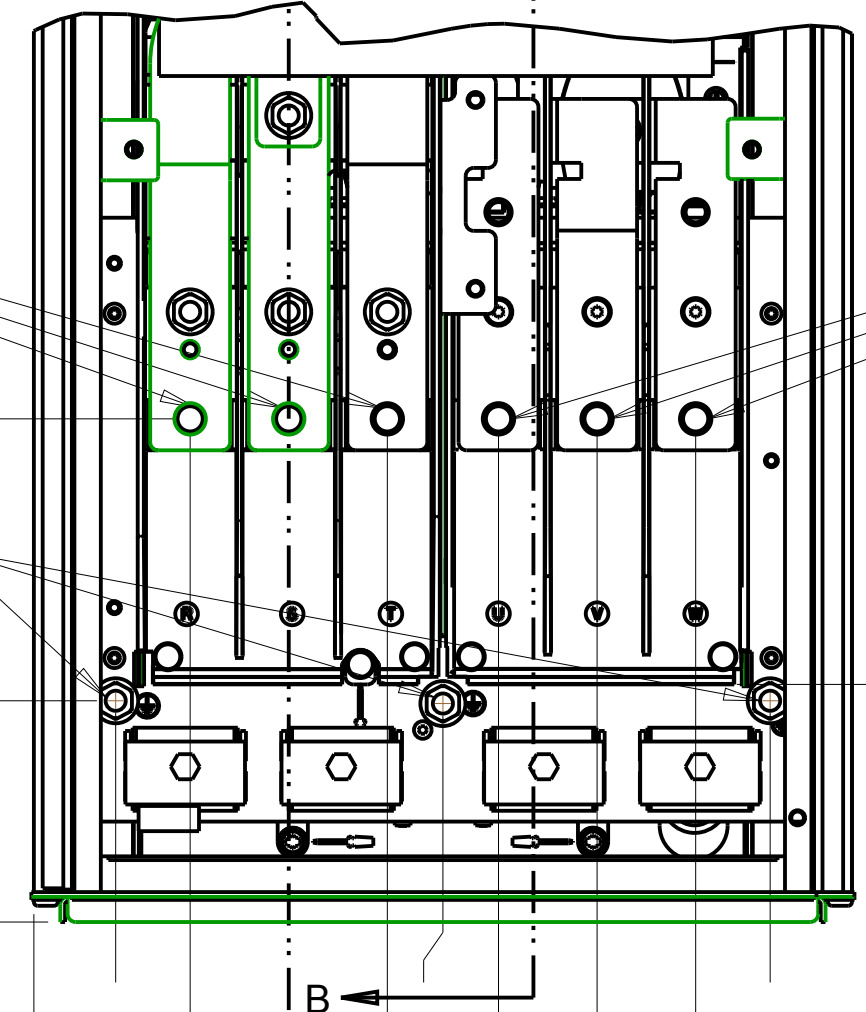
3X M8X20 STUD
WITH NUT

GROUND 88
[3.5]

0
[0.0]

0
[0.0]

272
[10.7]



MOTOR TERMINAL

94
[3.7]

0
[0.0]

33
[1.3]

62
[2.4]

101
[4.0]

140
[5.5]

185
[7.3]

224
[8.8]

263
[10.4]

R

T

V

S

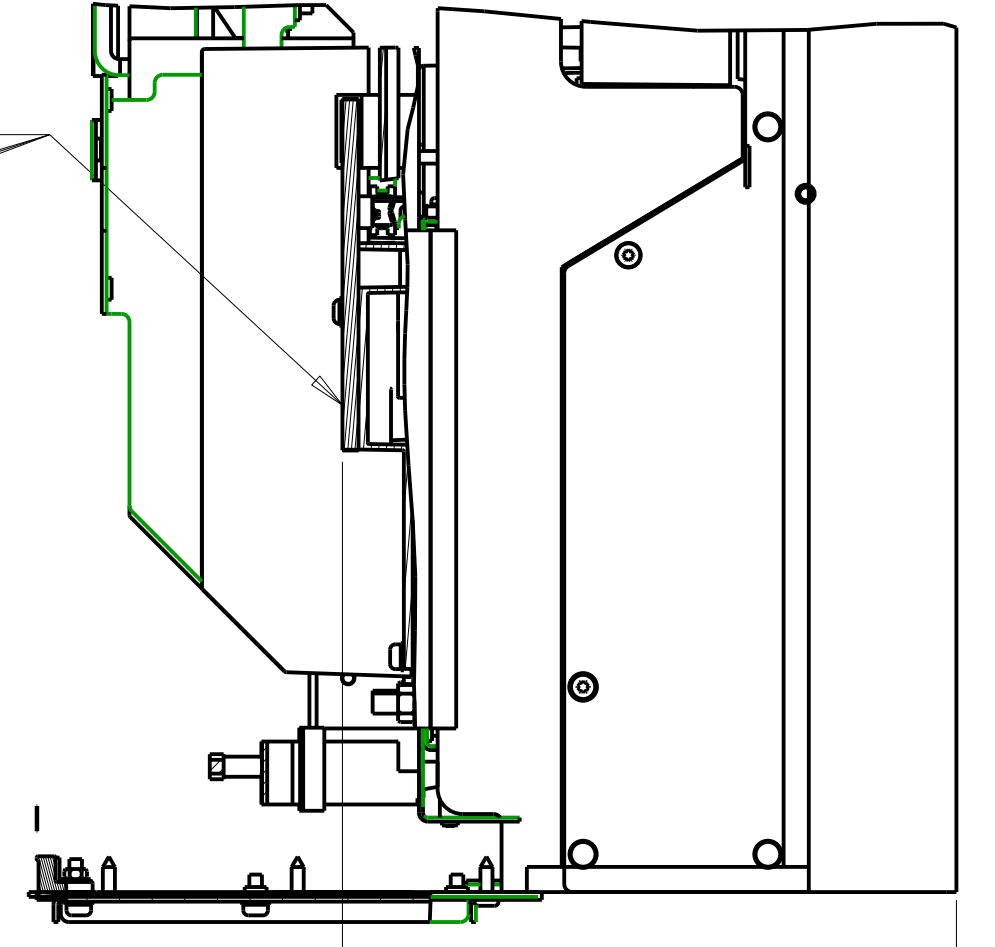
U

W

B

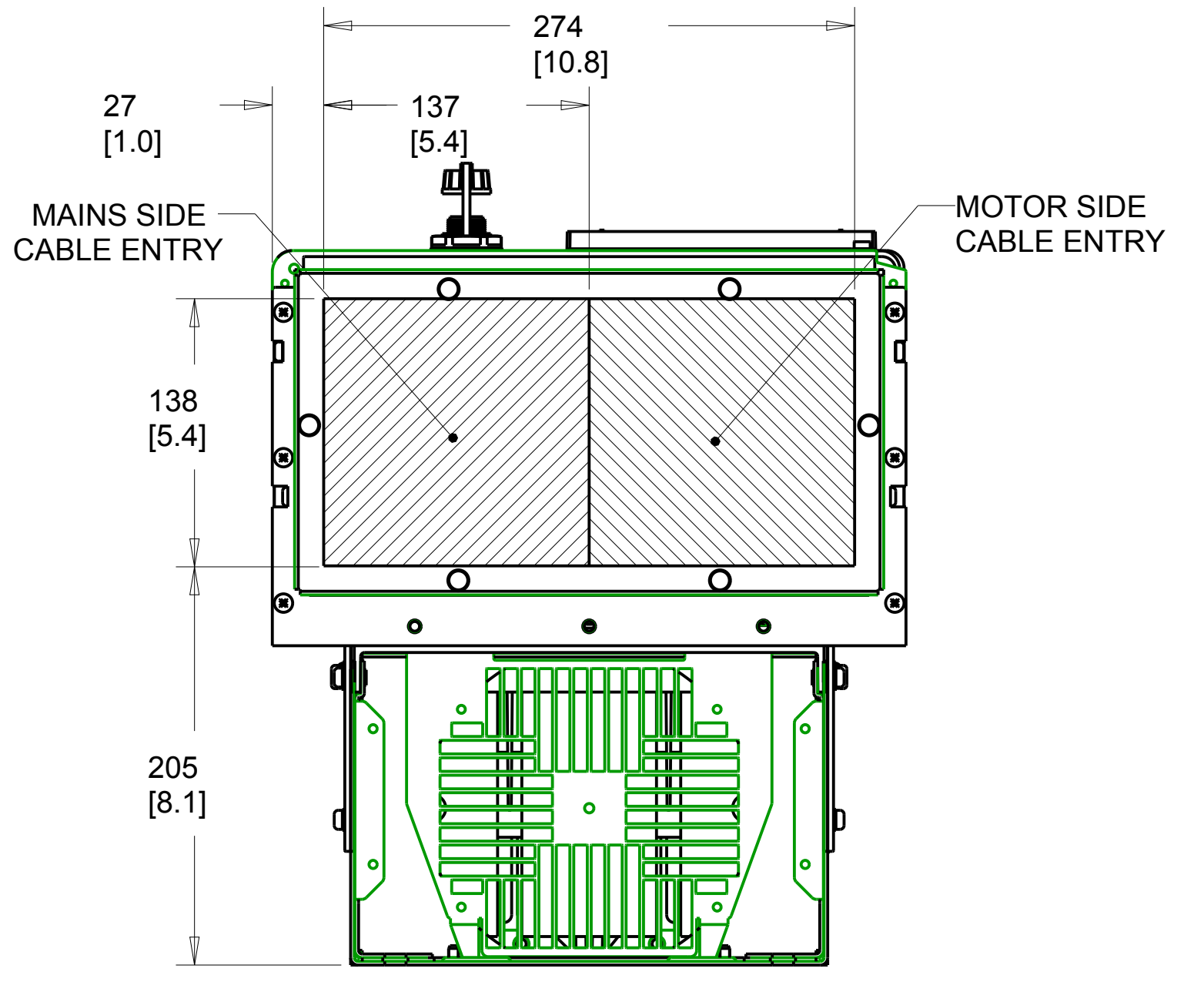
A

293
[11.5]



244
[9.6]

0
[0.0]



MAINS SIDE
CABLE ENTRY

MOTOR SIDE
CABLE ENTRY

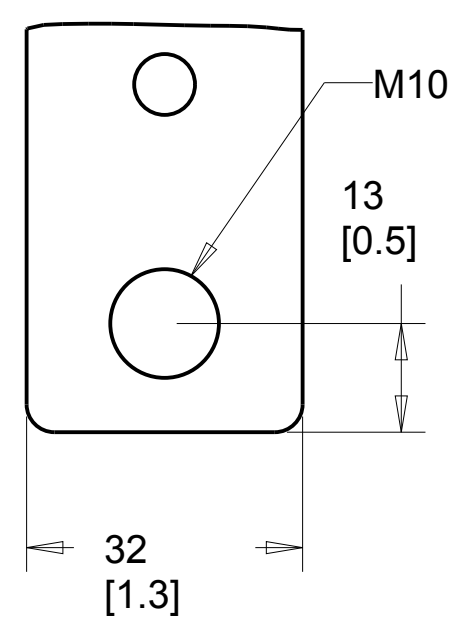
27
[1.0]

138
[5.4]

205
[8.1]

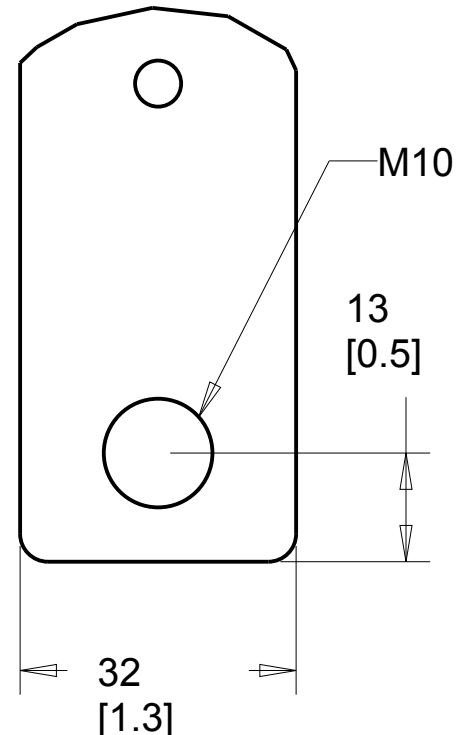
BOTTOM VIEW

MAINS TERMINAL



32
[1.3]

MOTOR TERMINAL



32
[1.3]

NOTES:

1. PLACE CABLES THROUGH MARKED AREAS
2. 95 MM² (3/0 MCM) MAX WIRE SIZE

TITLE INSTALLATION DRAWING, D1H, IP21/54		
SIZE C	MODEL	REV 001
SCALE 0.333	DRAWING NO. 177R0374	SHEET 2 OF 3

THE TABLES BELOW MAY BE USED TO CONFIRM THE CORRECT FRAME SIZE AND DRAWING FOR A SPECIFIC DRIVE RATING (POWER AND VOLTAGE). THIS DRAWING IS FOR D1H FRAMES, THE TABLES BELOW IDENTIFY WHICH DRIVES ARE REPRESENTED BY THIS DRAWING.

KW RATED DRIVES					
KW HIGH OVERLOAD	75	90	110	132	160
KW NORMAL OVERLOAD	90	110	132	160	200
400V		D1H	D1H	D1H	
500V			D1H	D1H	D1H
525V	D1H	D1H	D1H		
690V		D1H	D1H	D1H	

HORSEPOWER RATED DRIVES				
HP HIGH OVERLOAD	100	125	150	200
HP NORMAL OVERLOAD	125	150	200	250
460V		D1H	D1H	D1H
575V	D1H	D1H	D1H	

THE TABLE BELOW CAN BE USED TO DETERMINE THE FRAME SIZE IF THE SPECIFIC MODEL/TYPECODE IS KNOWN.

PLATFORM	VOLTAGE	MODEL/TYPECODE	FRAME(IP21/IP54)
HVAC	T4	FC-102N110T4	D1H
		FC-102N132T4	
		FC-102N160T4	
	T7	FC-102N110T7	
		FC-102N132T7	
		FC-102N160T7	
AQUA	T4	FC-202N110T4	
		FC-202N132T4	
		FC-202N160T4	
		FC-202N200T7	
	T7	FC-202N110T7	
		FC-202N132T7	
		FC-202N160T7	
		FC-202N160T7	
AUTOMATION	T5	FC-302N90KT5	
		FC-302N110T5	
		FC-302N132T5	
	T7	FC-302N90KT7	
		FC-302N110T7	
		FC-302N110T7	
		FC-302N132T7	

TITLE		
INSTALLATION DRAWING, D1H, IP21/54		
SIZE	MODEL	REV
C		001
SCALE	DRAWING NO.	SHEET
0.175	177R0374	3 OF 3