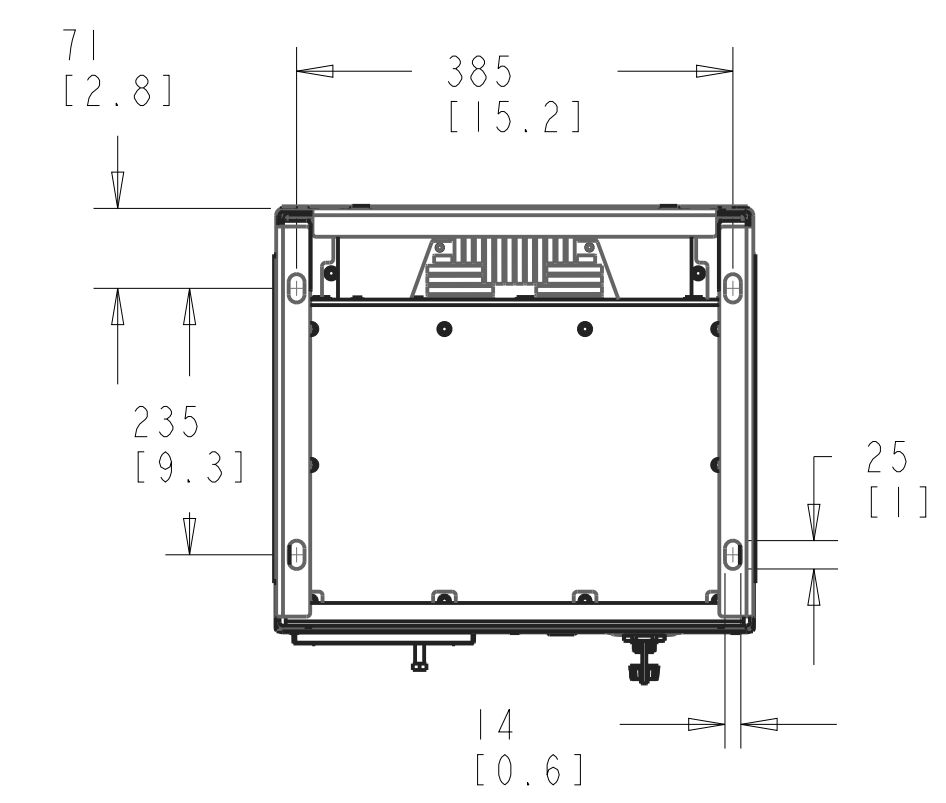
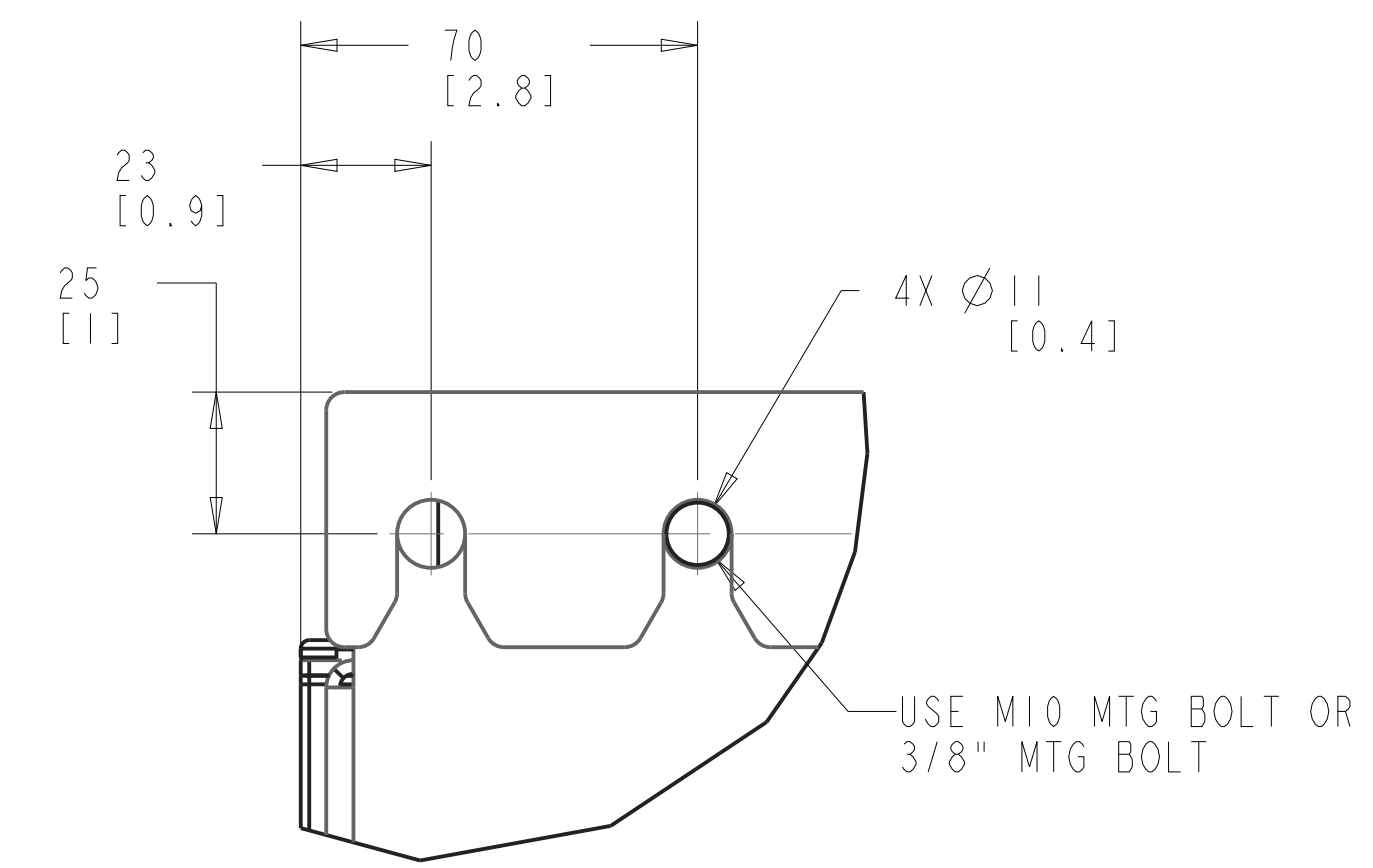
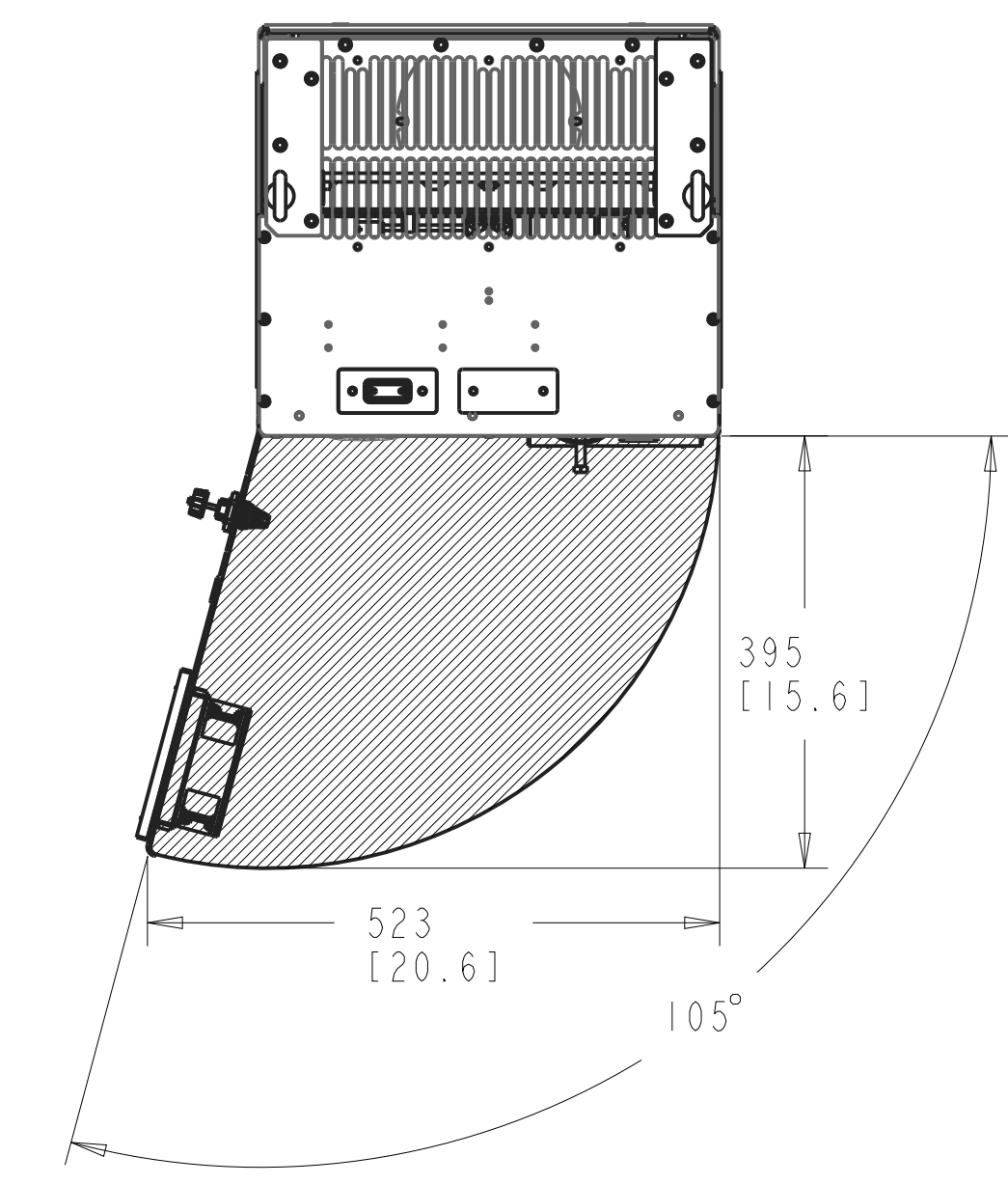
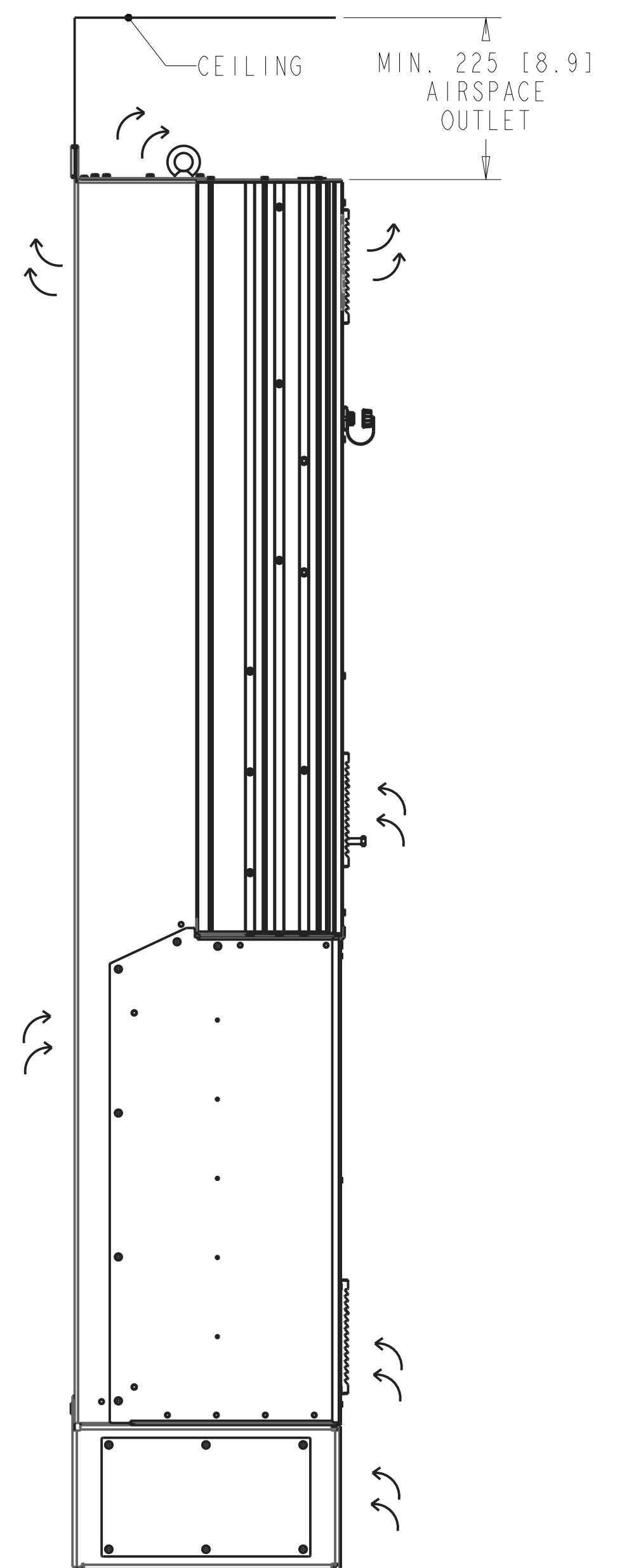
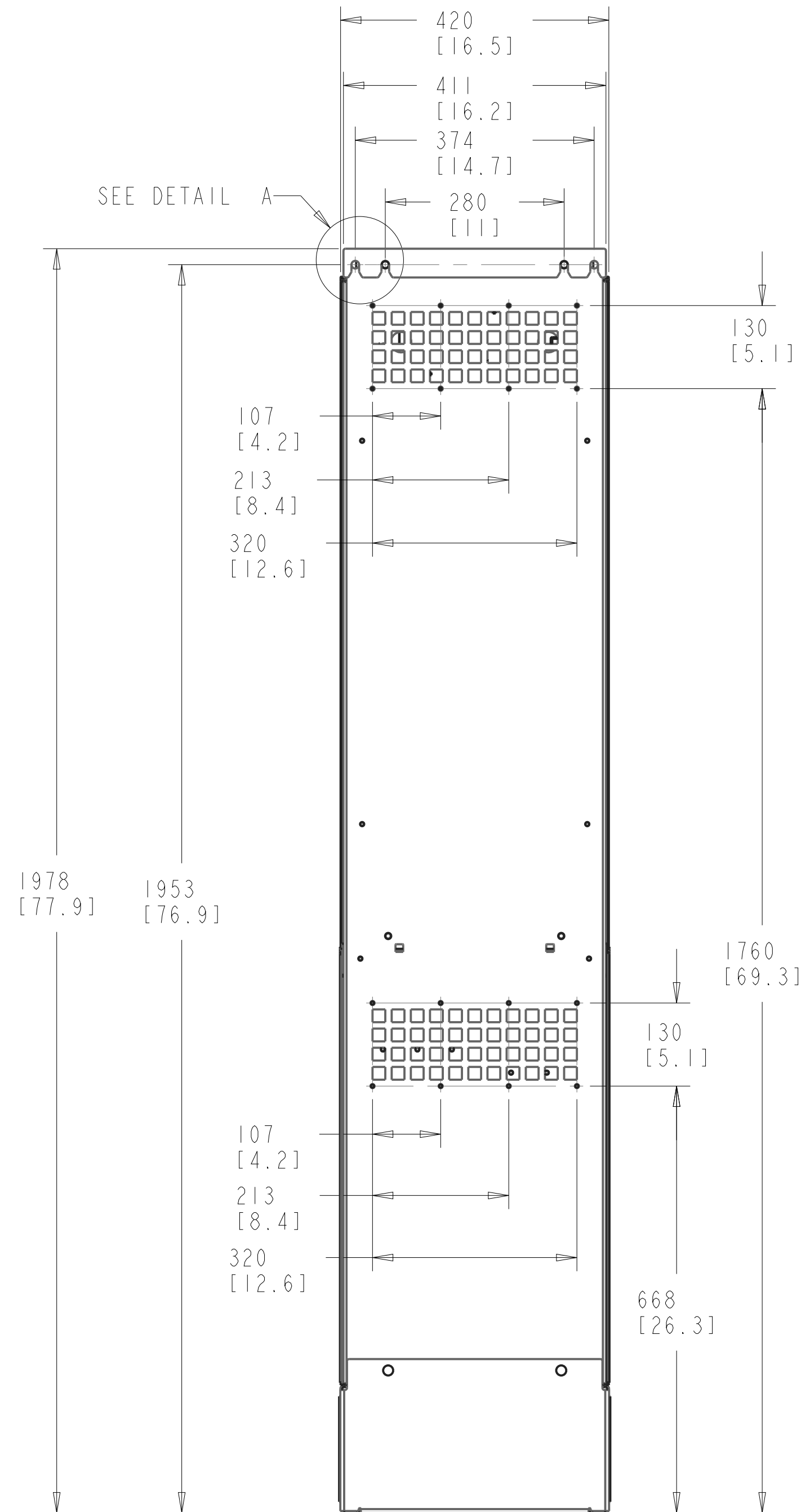
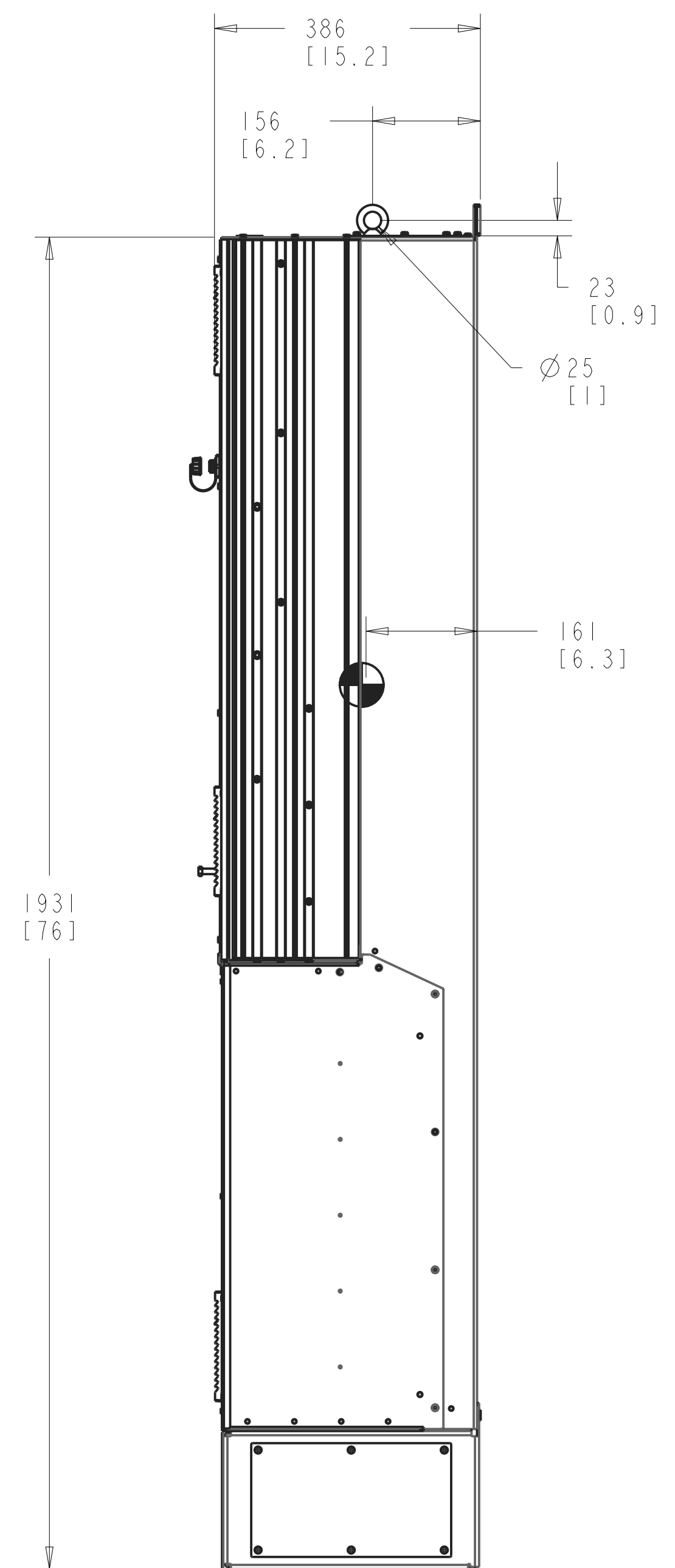
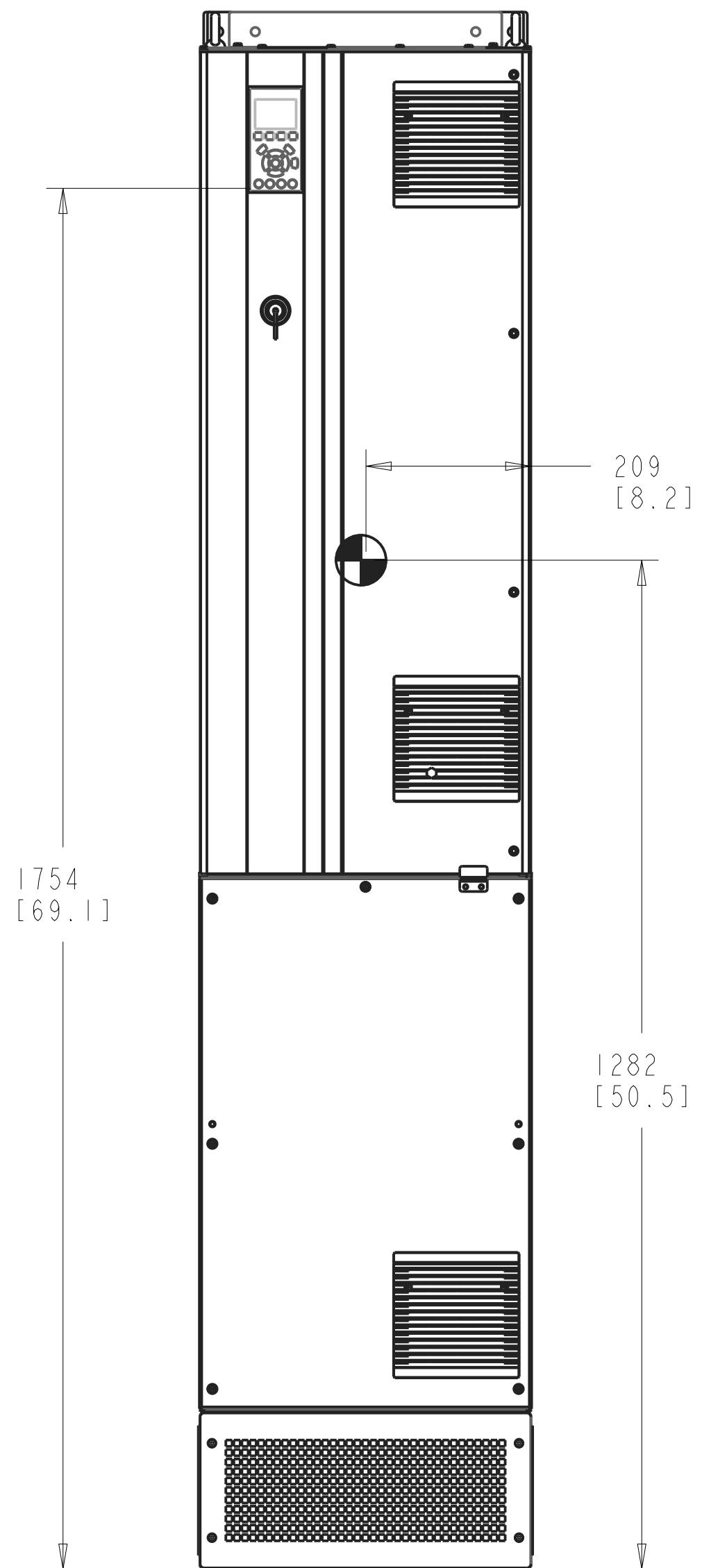


- NOTICE -  
 THIS DOCUMENT CONTAINS PROPRIETARY INFORMATION OF DANFOSS DRIVES. IT IS LOANED BY DANFOSS DRIVES SUBJECT TO THE CONDITIONS THAT IT AND THE INFORMATION EMBODIED THEREIN SHALL BE USED ONLY FOR RECORD AND REFERENCE PURPOSES. SHALL NOT BE USED OR CAUSED TO BE USED IN ANY WAY PREJUDICIAL TO THE INTERESTS OF DANFOSS DRIVES. SHALL NOT BE REPRODUCED OR COPIED IN WHOLE OR IN PART OR DISCLOSED TO ANYONE WITHOUT THE DIRECT WRITTEN PERMISSION OF DANFOSS DRIVES, AND SHALL BE RETURNED UPON REQUEST.

REVISION HISTORY			
REV	ECN NUMBER	ENTRY BY	DATE
001	INITIAL RELEASE	CCN	06/18/12
002		DRK	05/31/13



1. MAX AIRFLOW (BACKCHANNEL) - 14 M<sup>3</sup> / MIN (500 CFM)
2. MAX AIRFLOW (CABINET) - 3.4 M<sup>3</sup> / MIN (120 CFM)
3. MAX WEIGHT = 185 KG (407 LBS)
4. CENTER OF GRAVITY: APPROXIMATE LOCATION ONLY, LOCATION MAY VARY BASED ON POWER RATING AND OPTIONS ORDERED.

NOTE:  
 REFER SHEET 2 & 3 FOR EXTENDED OPTION CABINET BUSBAR CONNECTION POINT.  
 REFER SHEET 4 FOR WIRING KIT OPTION BUSBAR CONNECTION POINT.

UNLESS OTHERWISE SPECIFIED INTERPRET DIM. AND TOL. PER ASME Y14.5M-1994	PROPERTIES		
.X±0.4 .XX±0.20 ±0.5	MATERIAL	NA	
DIM. ARE IN MILLIMETERS WEIGHTS ARE IN KILOGRAMS	FINISH	NA	
THIRD ANGLE PROJECTION	THICKNESS	NA	
	EST. WEIGHT	185.00	
	APPROVALS	INITIALS	DATE
	DRAWN	ND	04/02/12
	CHECKED		
	ENGR		

**Danfoss**

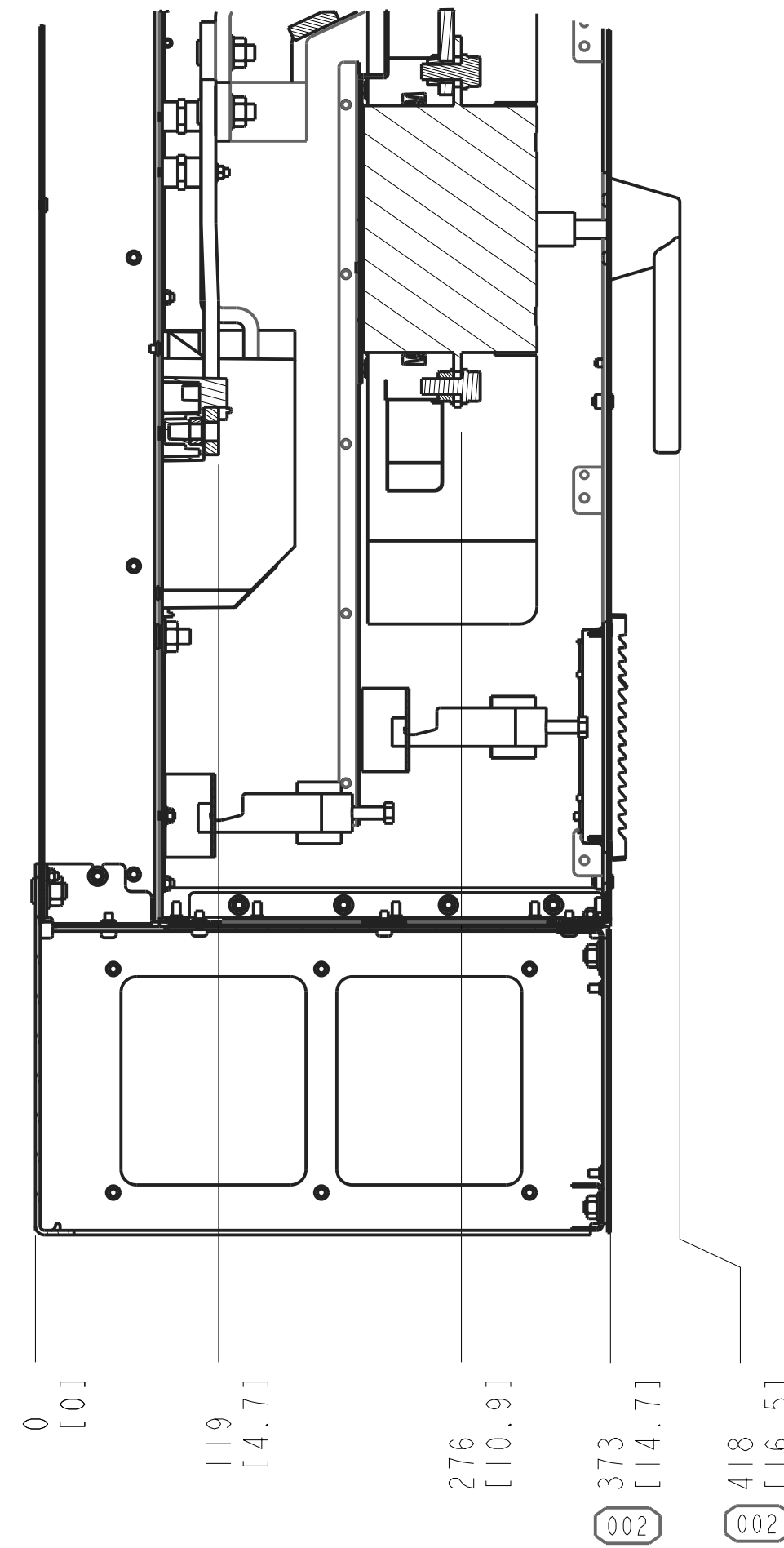
4401 N. BELL SCHOOL RD. LOVES PARK, ILLINOIS 61111 USA  
 (815) 639-8000 FAX (815) 639-8000

INSTALLATION DRAWING, DTH, IP21/54

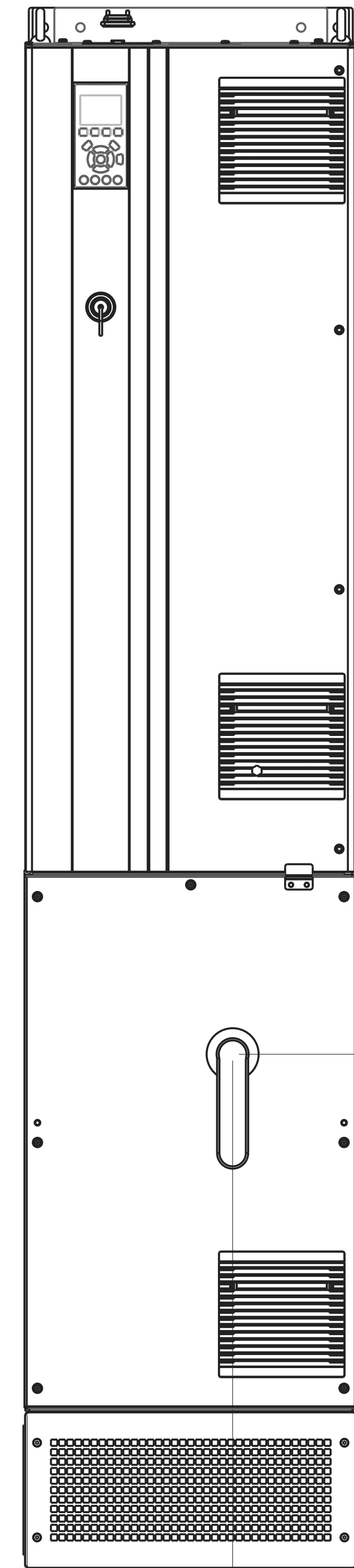
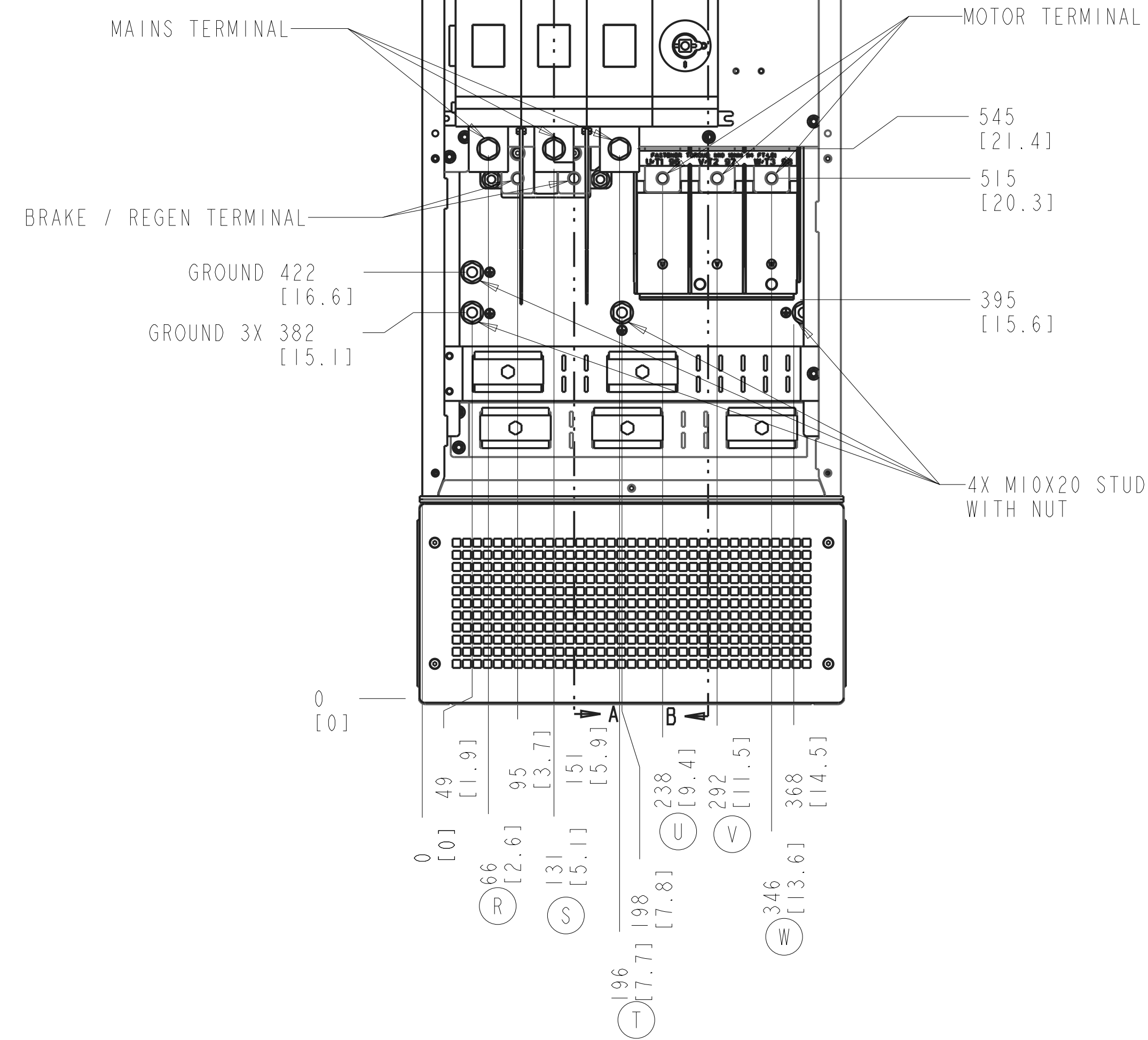
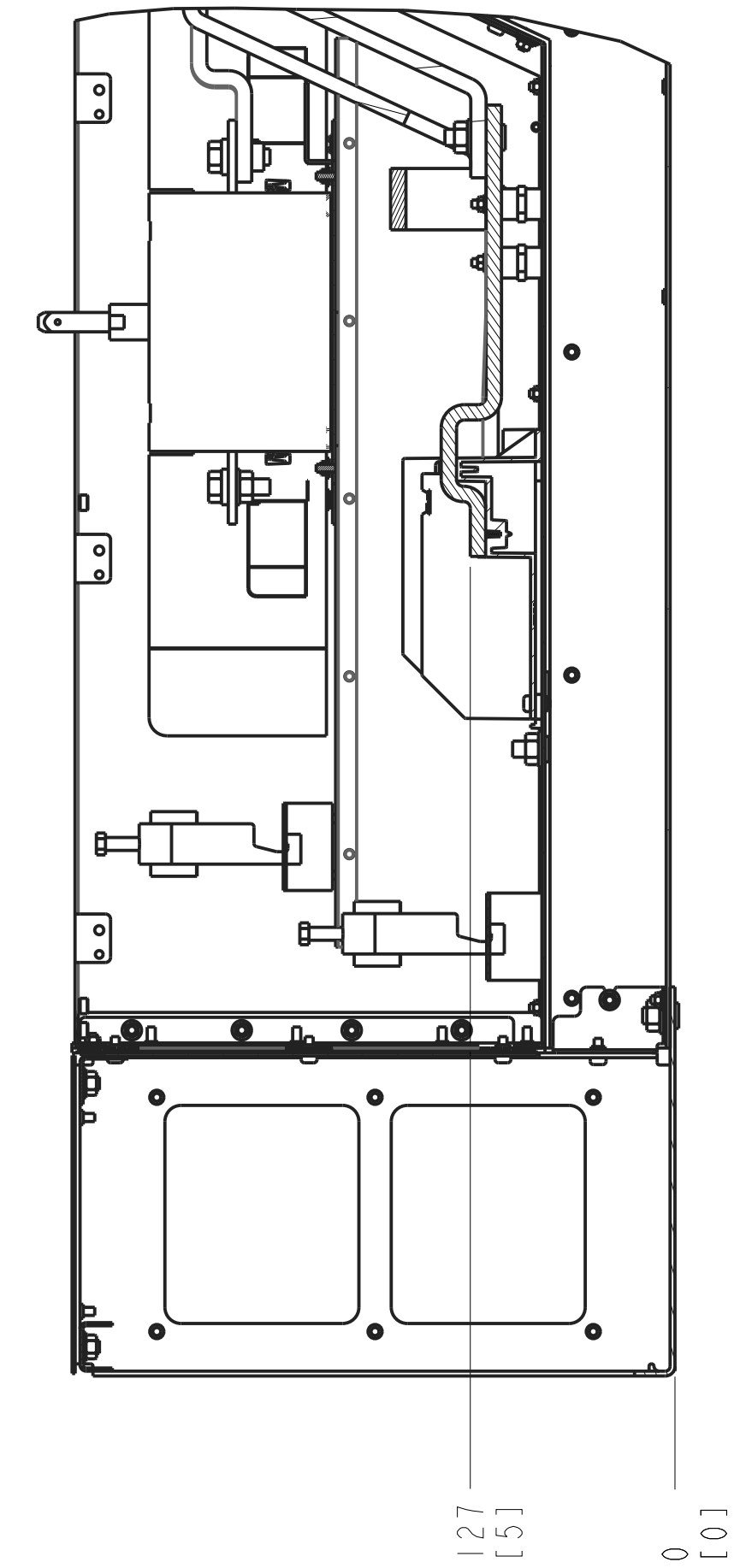
SIZE D	MODEL P454-1087	REV 002
SCALE 0.150	DRAWING NO. 177R0492	SHEET 1 OF 6

DISCONNECT ONLY

SECTION A-A  
MAINS TERMINALS  
BRAKE/REGEN TERMINALS



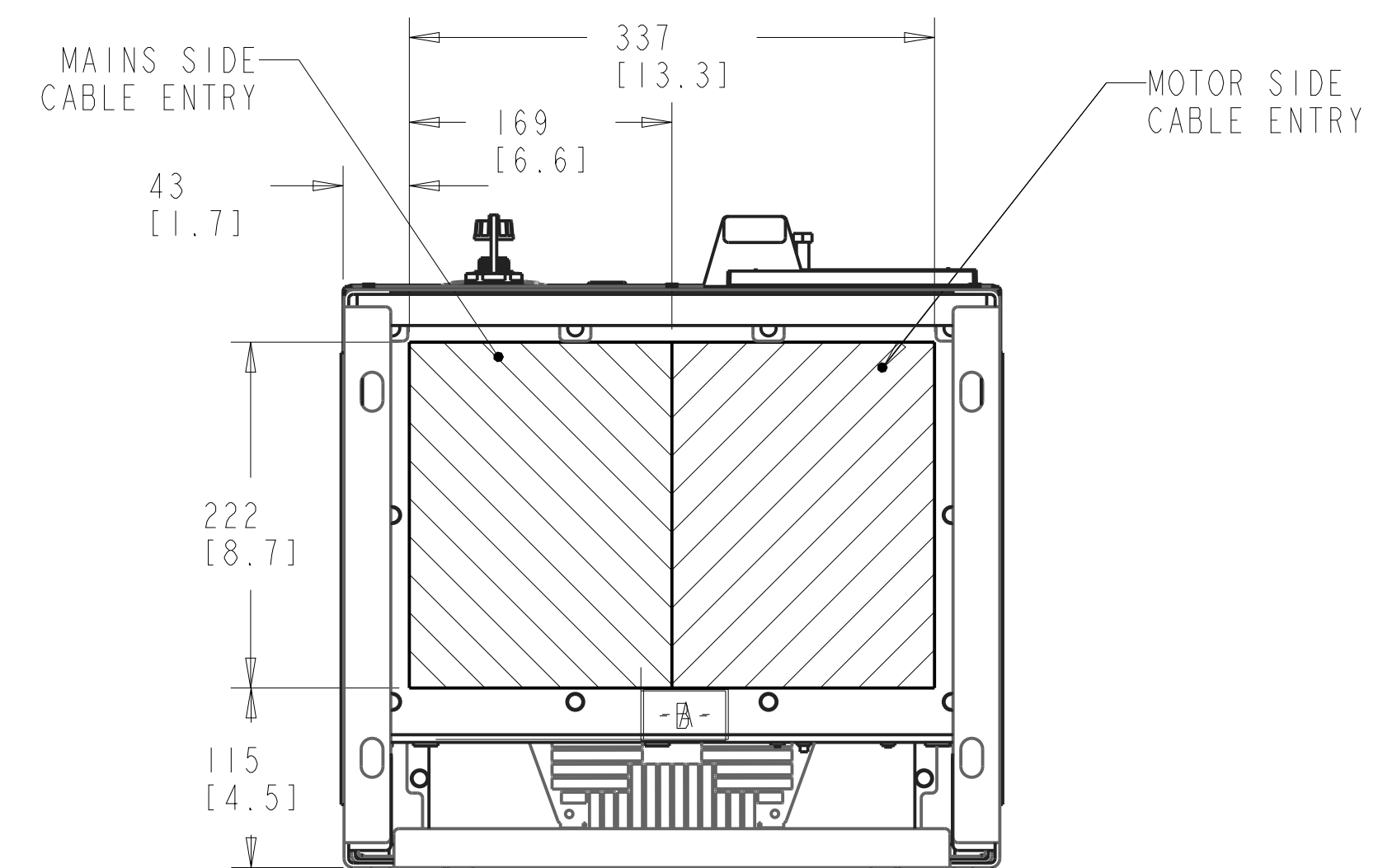
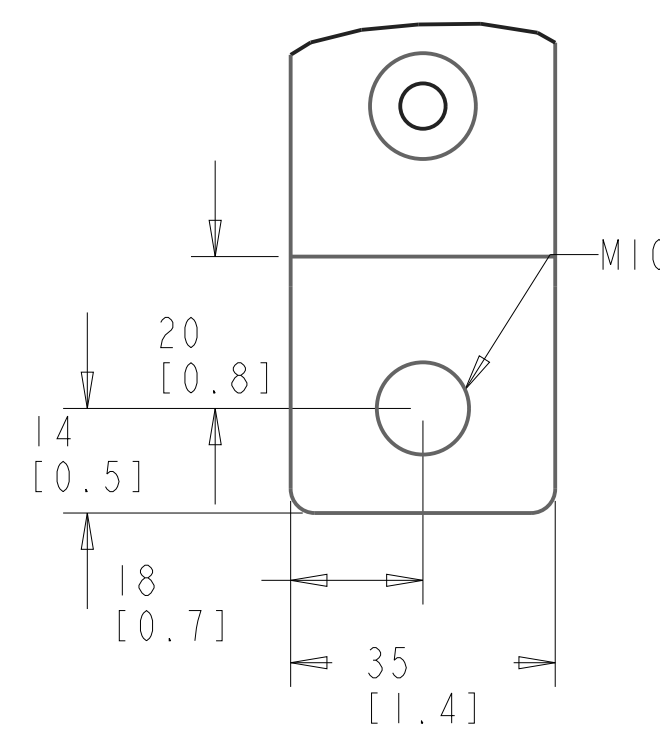
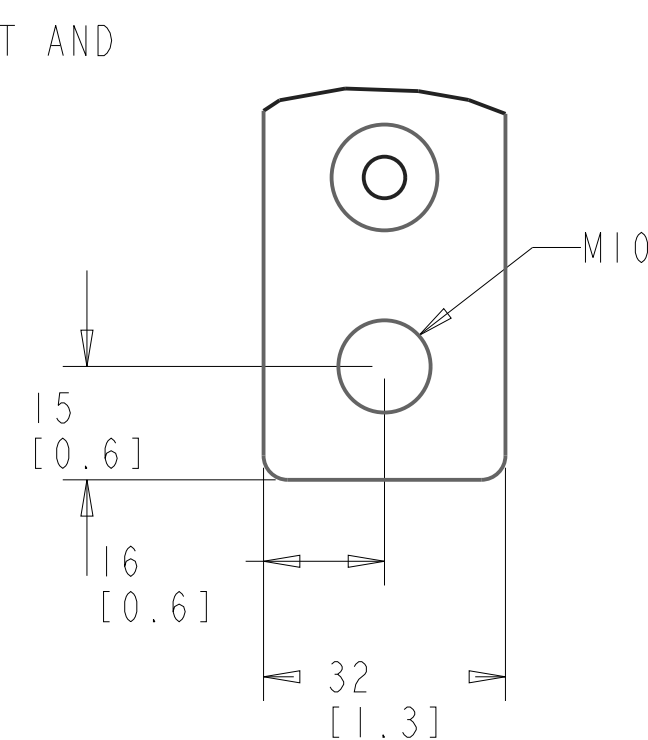
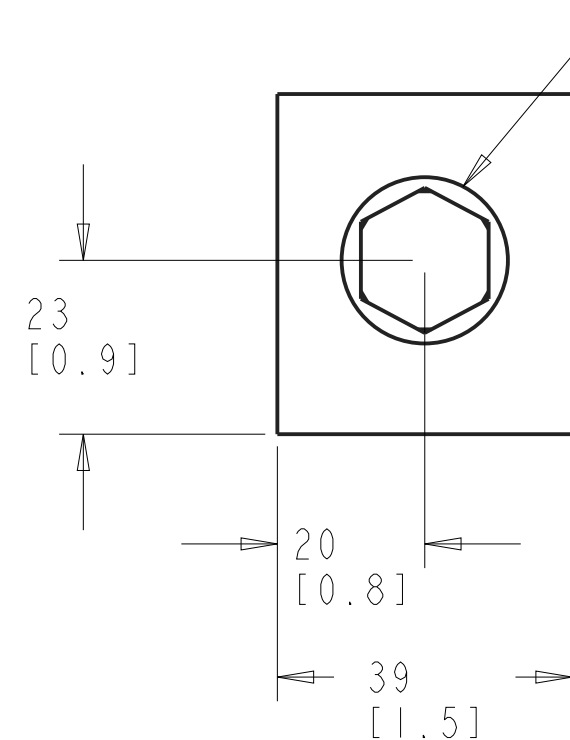
SECTION B-B  
MOTOR TERMINALS



MAINS TERMINAL

BRAKE TERMINAL

MOTOR TERMINAL



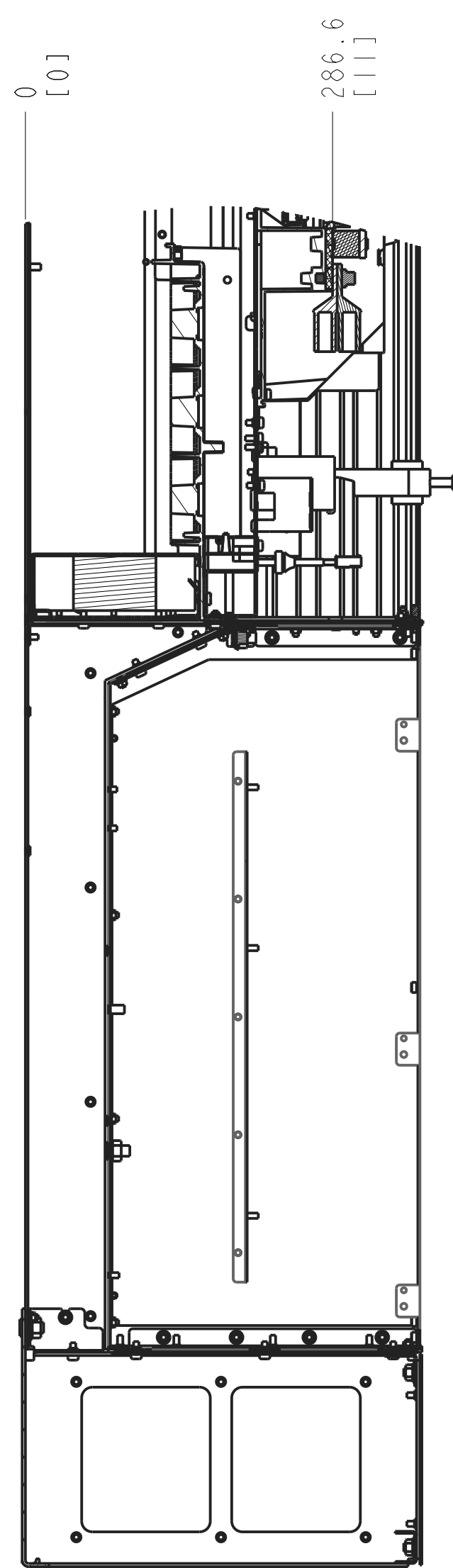
NOTES:

1. PLACE CABLES THROUGH MARKED AREAS
2. 185MM<sup>2</sup> (400 MCM) MAX WIRE SIZE

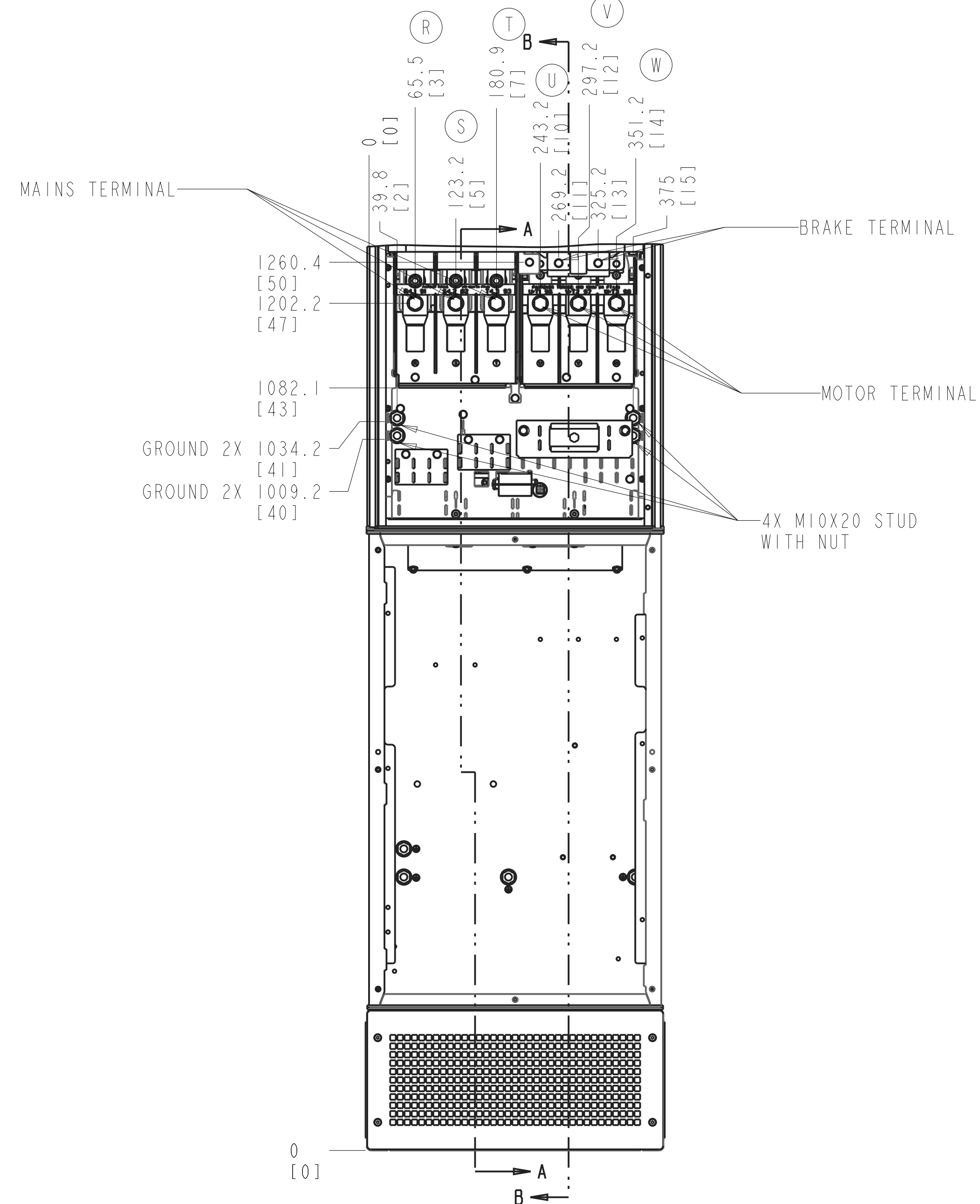
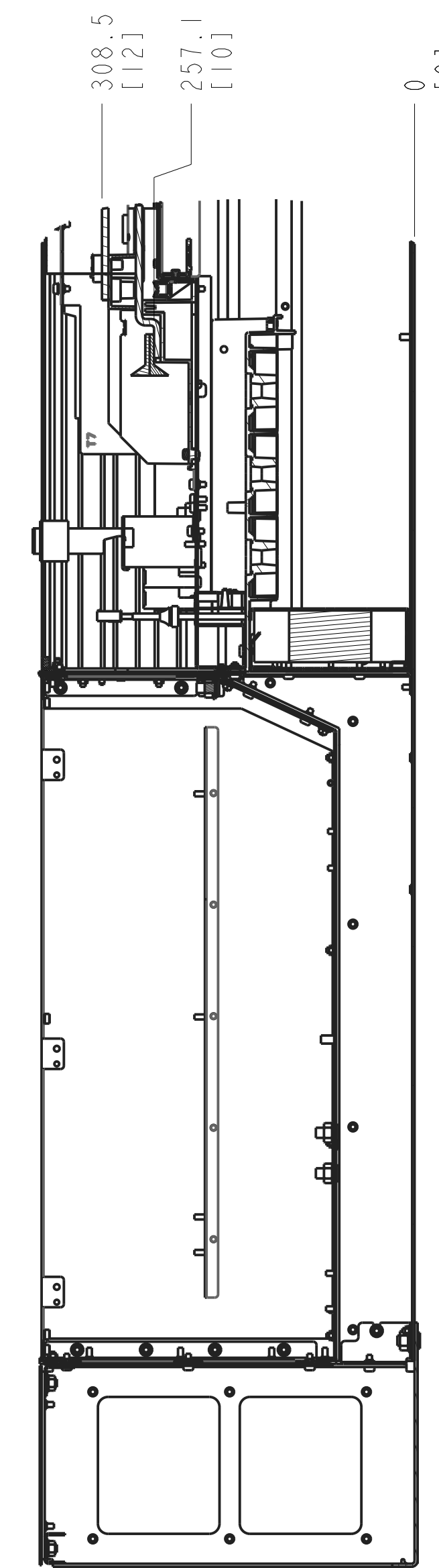
TITLE			
INSTALLATION DRAWING, DTH, IP21/54			
SIZE D	MODEL P454-1087	REV 002	
SCALE 0.250	DRAWING NO. 177R0492	SHEET 2 OF 6	

BRAKE ONLY

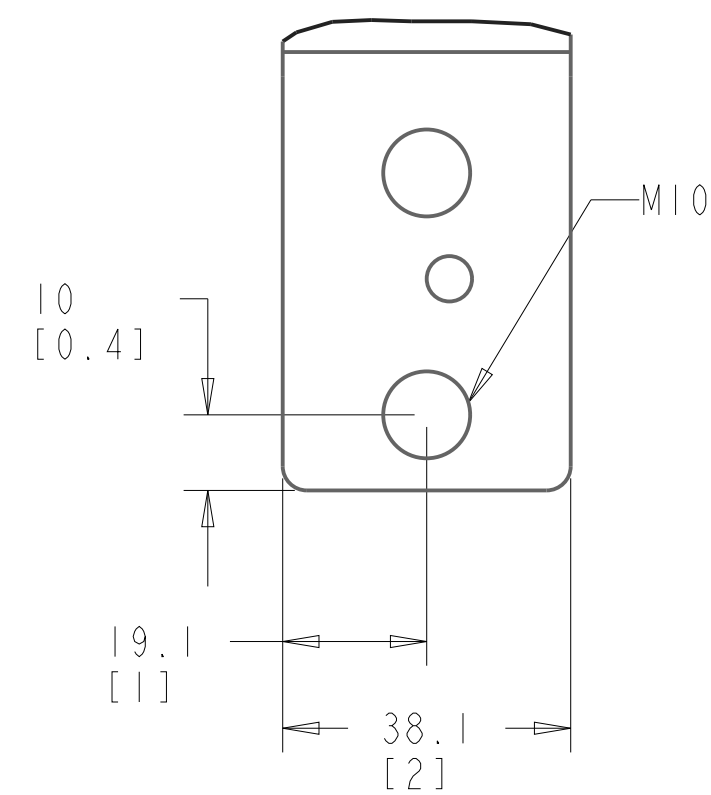
SECTION A-A  
MAINS TERMINALS



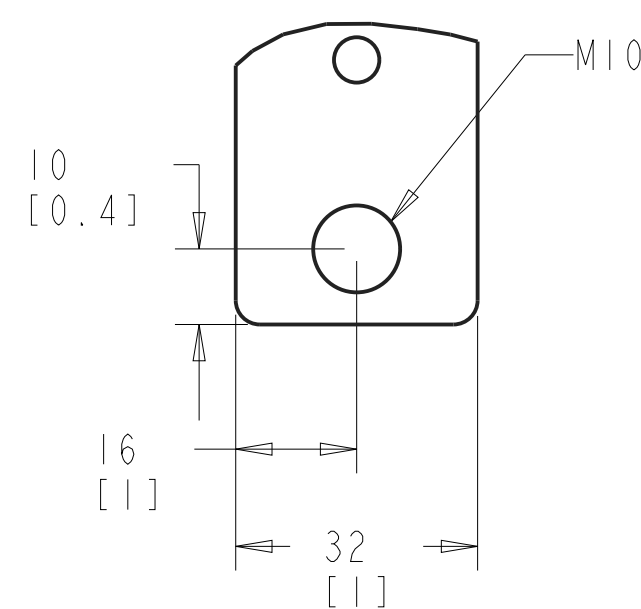
SECTION B-B  
MOTOR TERMINALS  
BRAKE/REGEN TERMINALS



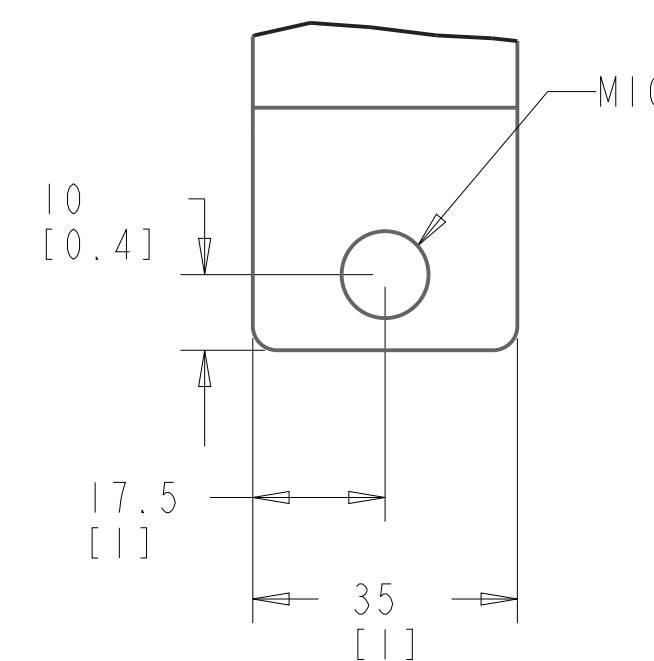
MAINS TERMINAL



BRAKE TERMINAL



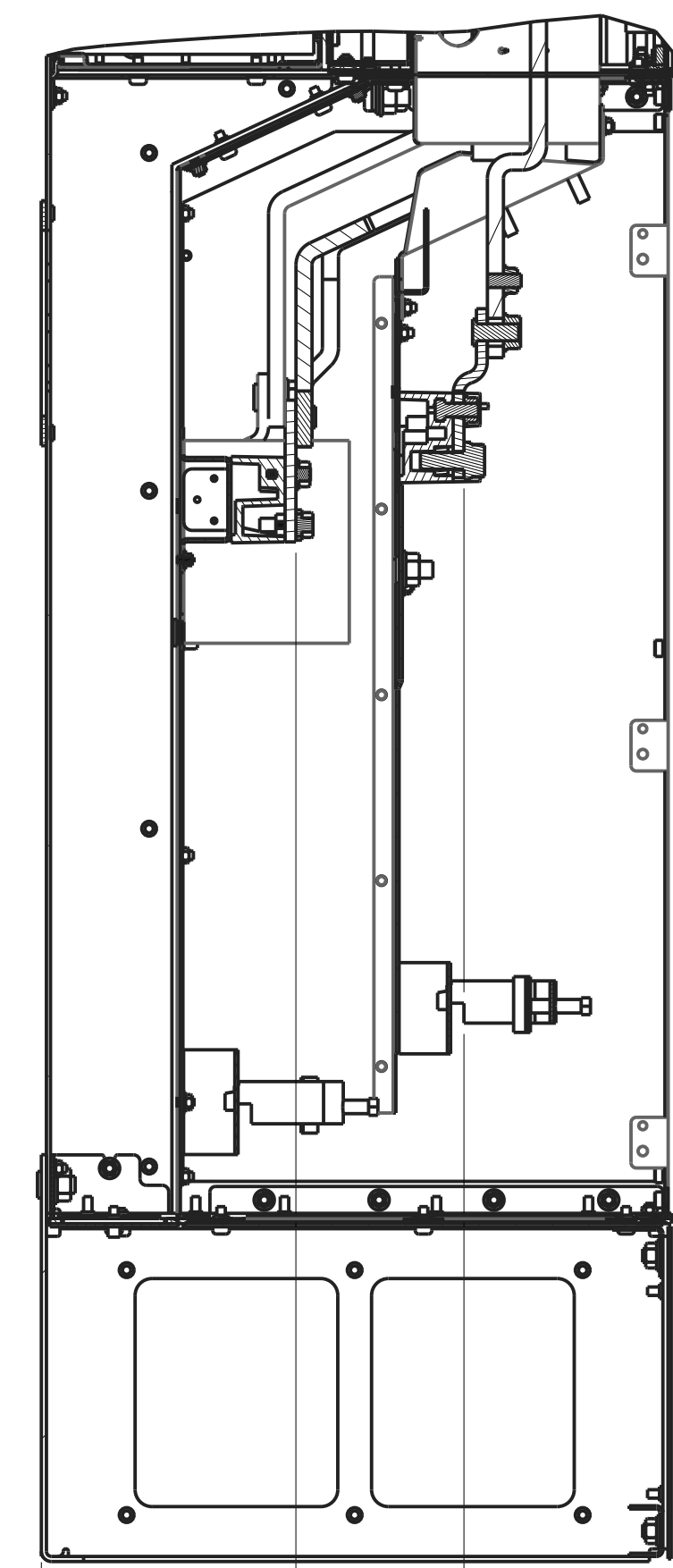
MOTOR TERMINAL



- NOTES:
1. 185MM<sup>2</sup> (400 MCM) MAX WIRE SIZE

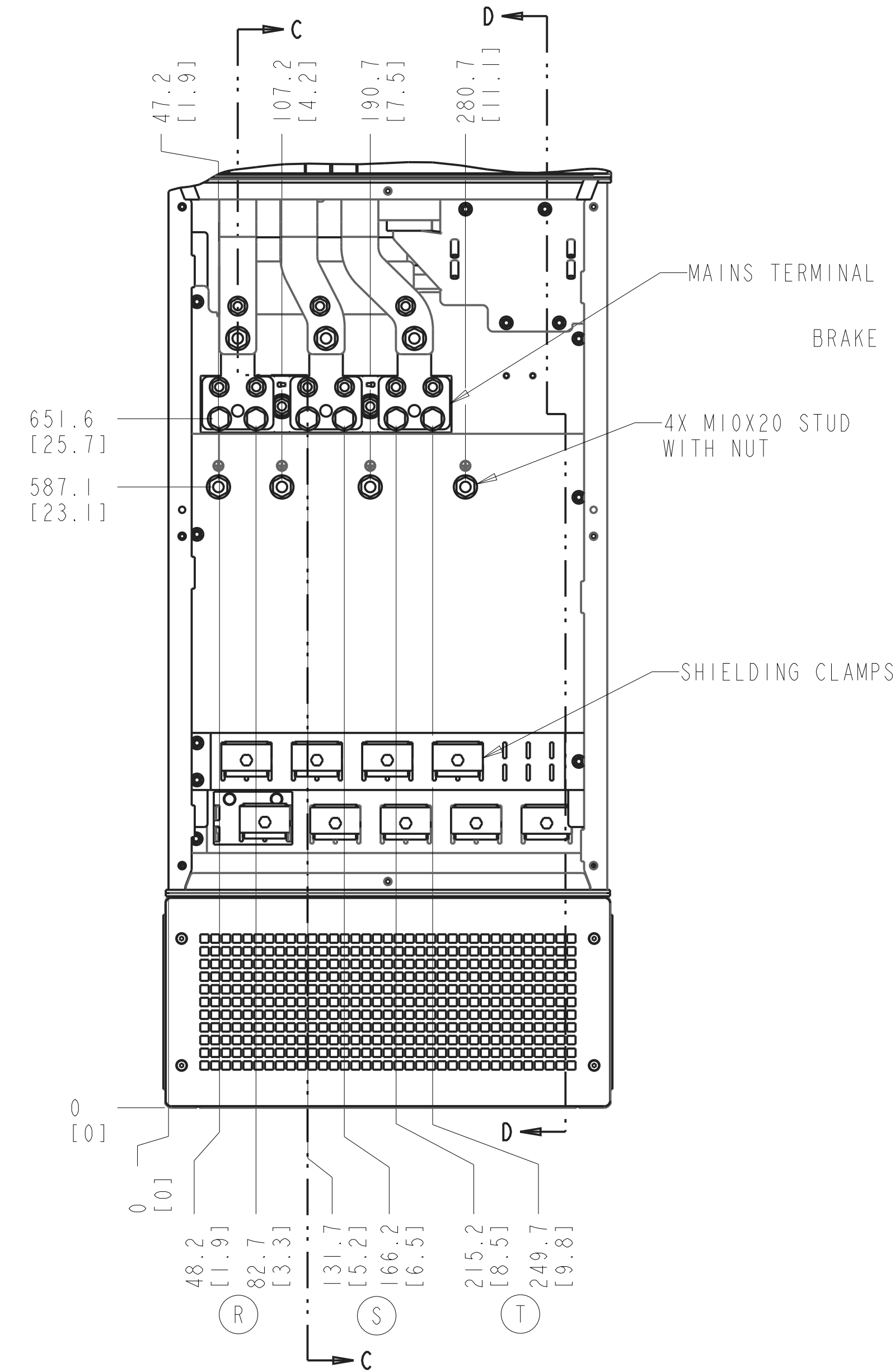
TITLE		
INSTALLATION DRAWING, DTH, IP21/54		
SIZE D	MODEL P454-1087	REV 002
SCALE 0.200	DRAWING NO. 177R0492	SHEET 3 OF 6

SECTION C-C  
MAINS TERMINAL  
BRAKE TERMINAL

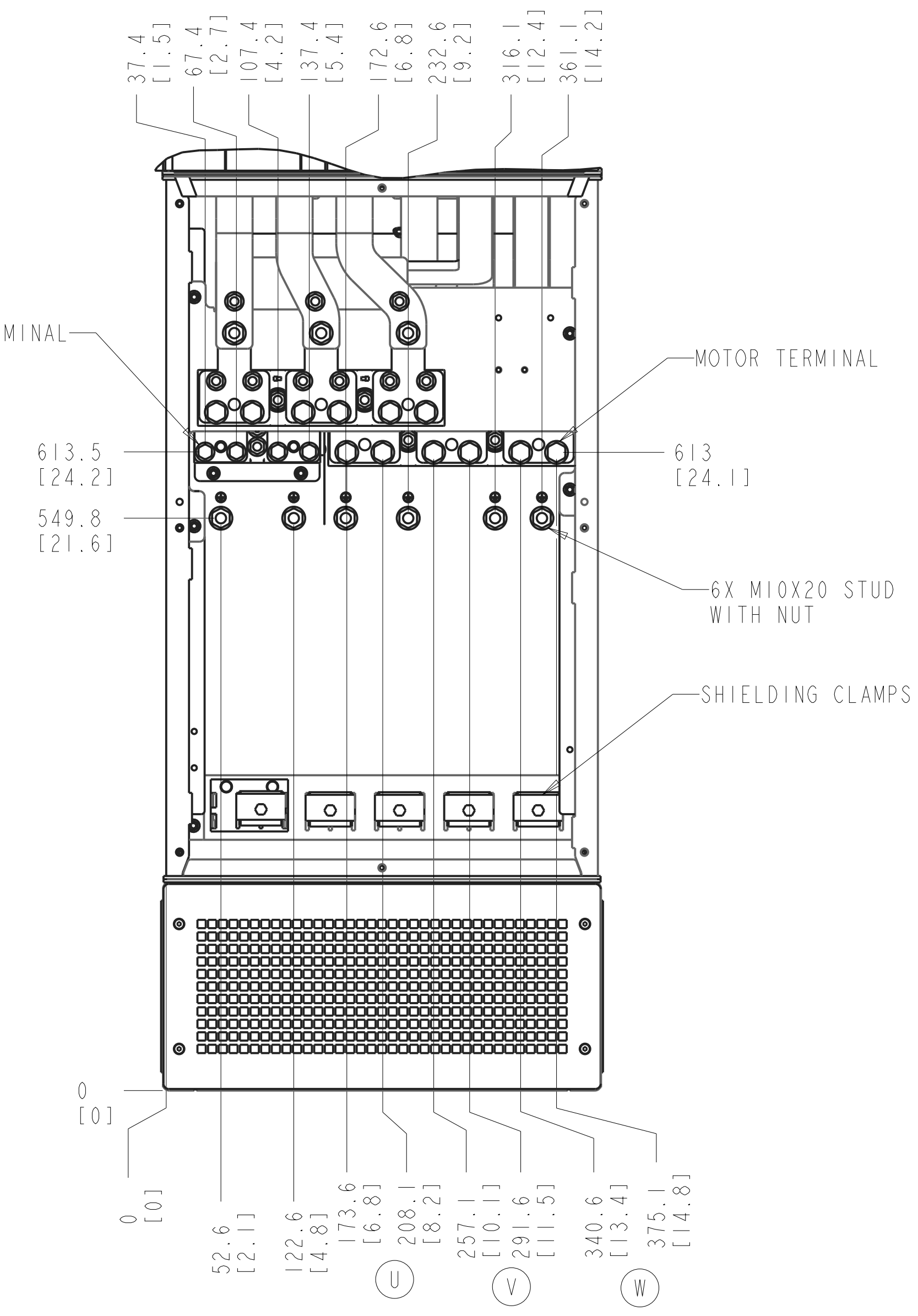


0 [0]  
150.7 [5.9]  
250.2 [9.9]

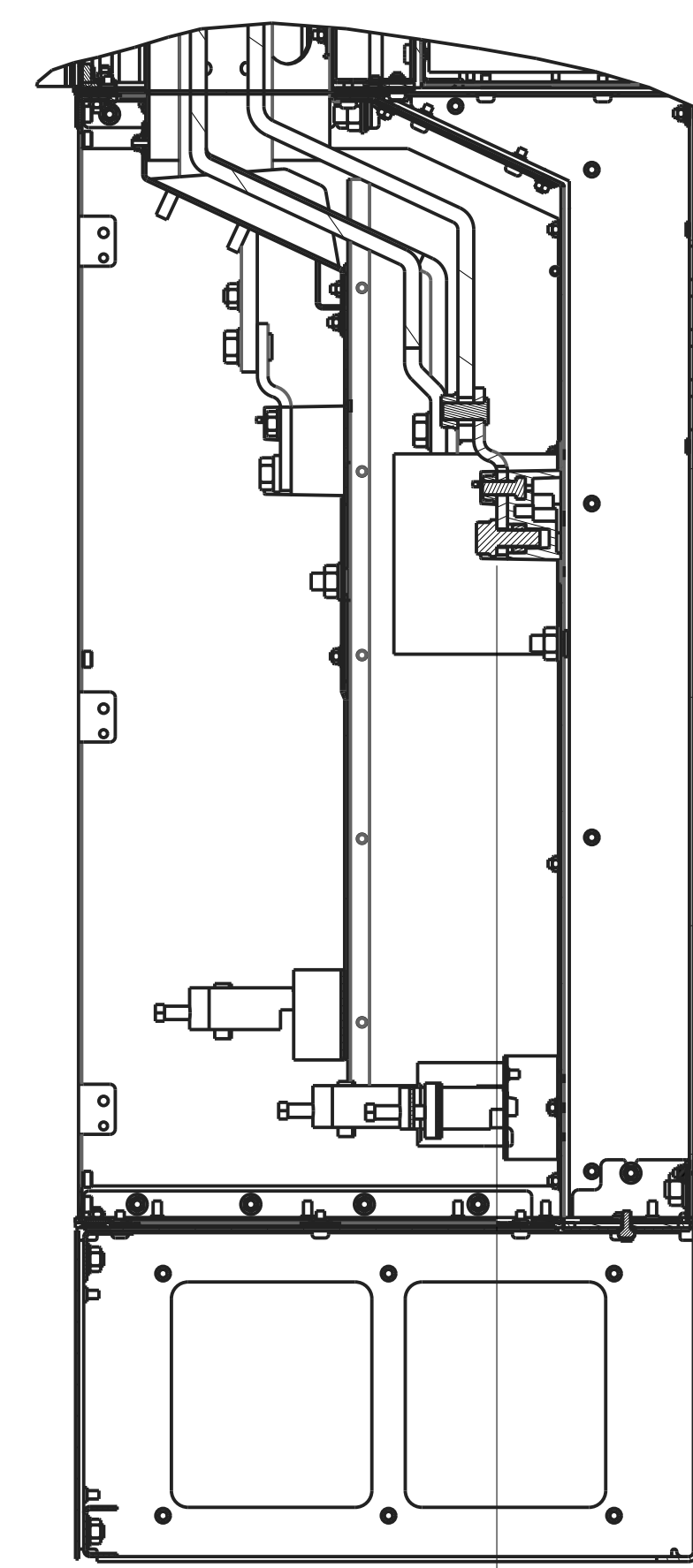
MAINS TERMINAL



MOTOR TERMINAL  
BRAKE TERMINAL

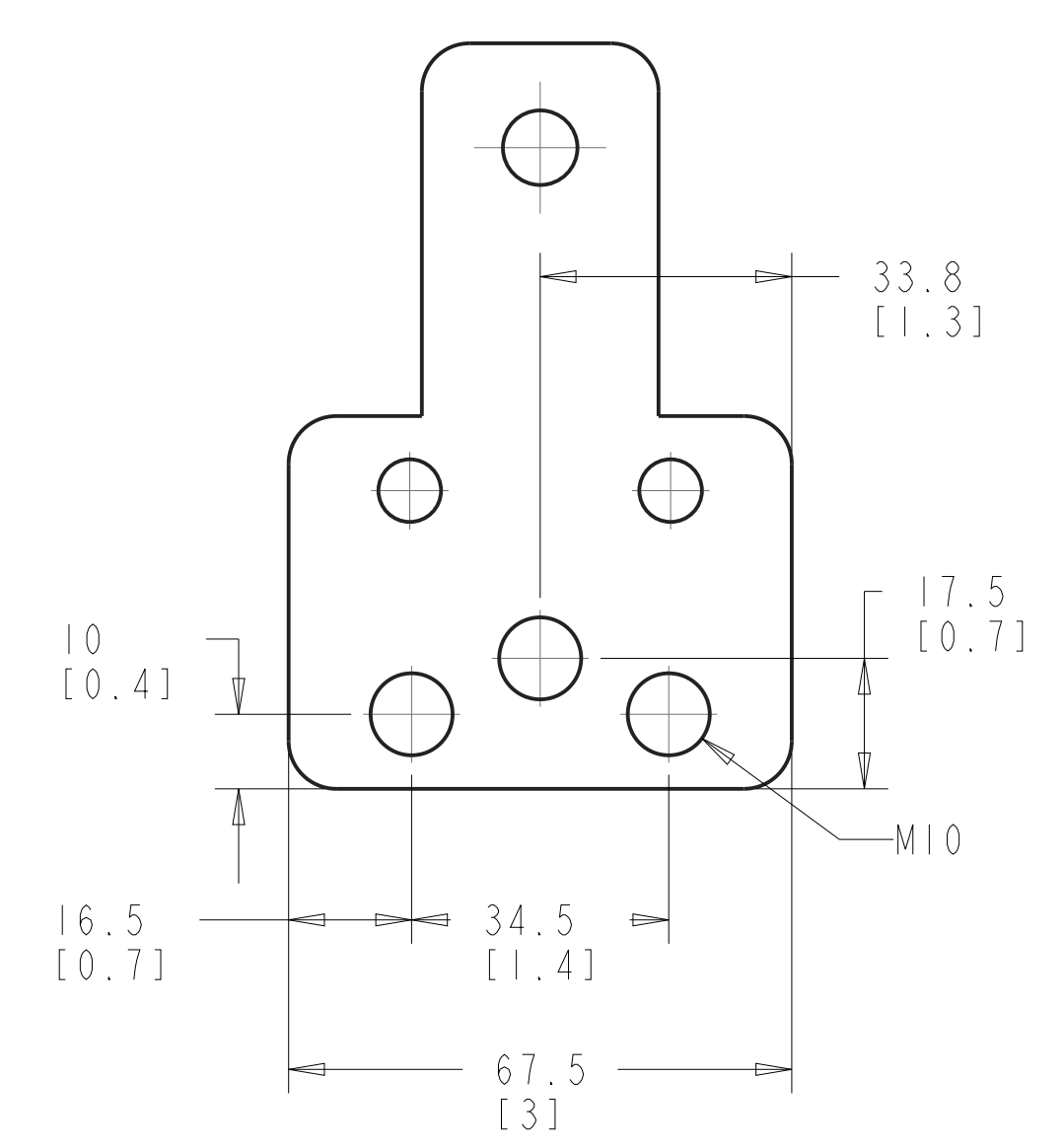


SECTION D-D  
MOTOR TERMINAL

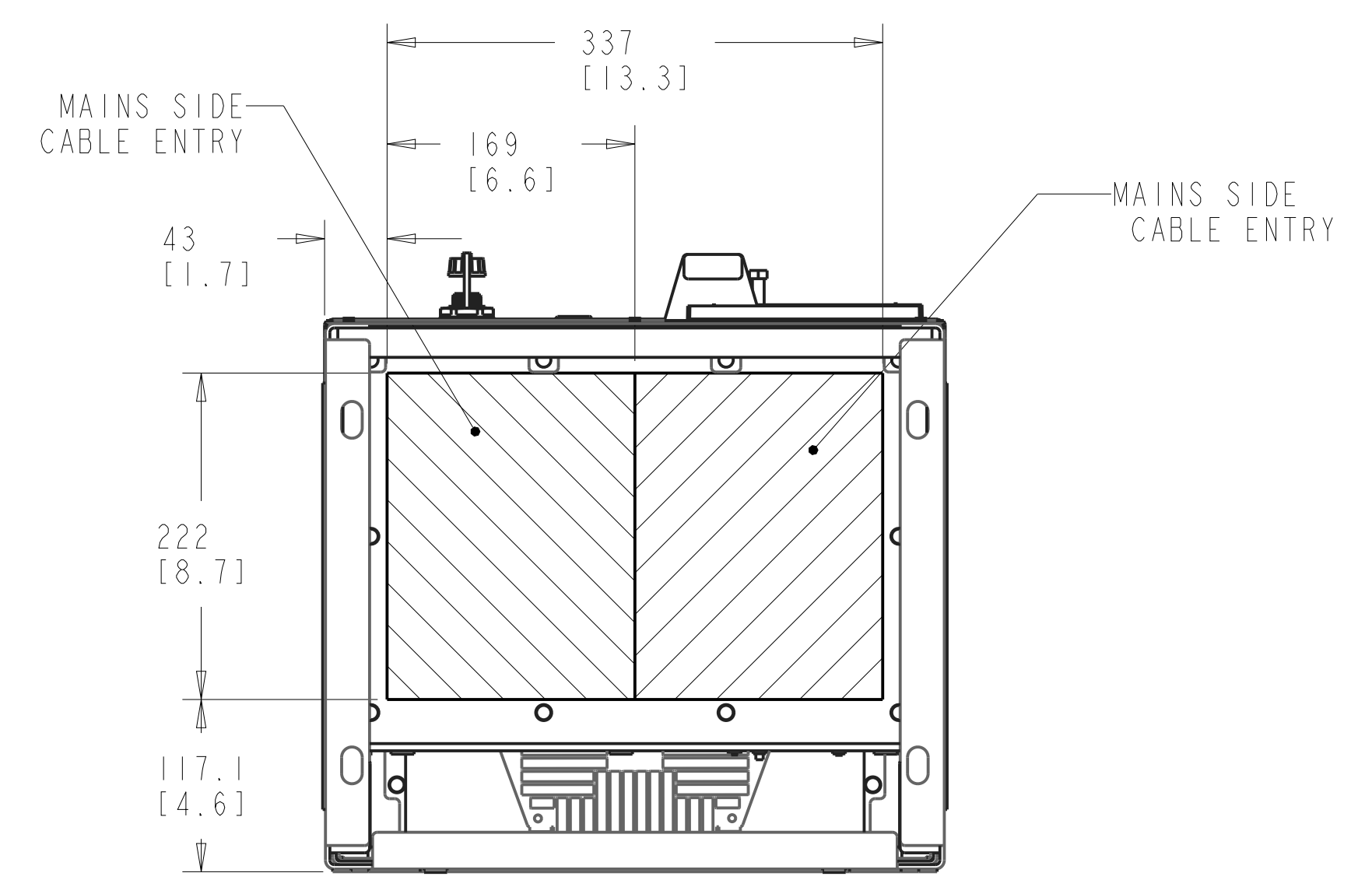
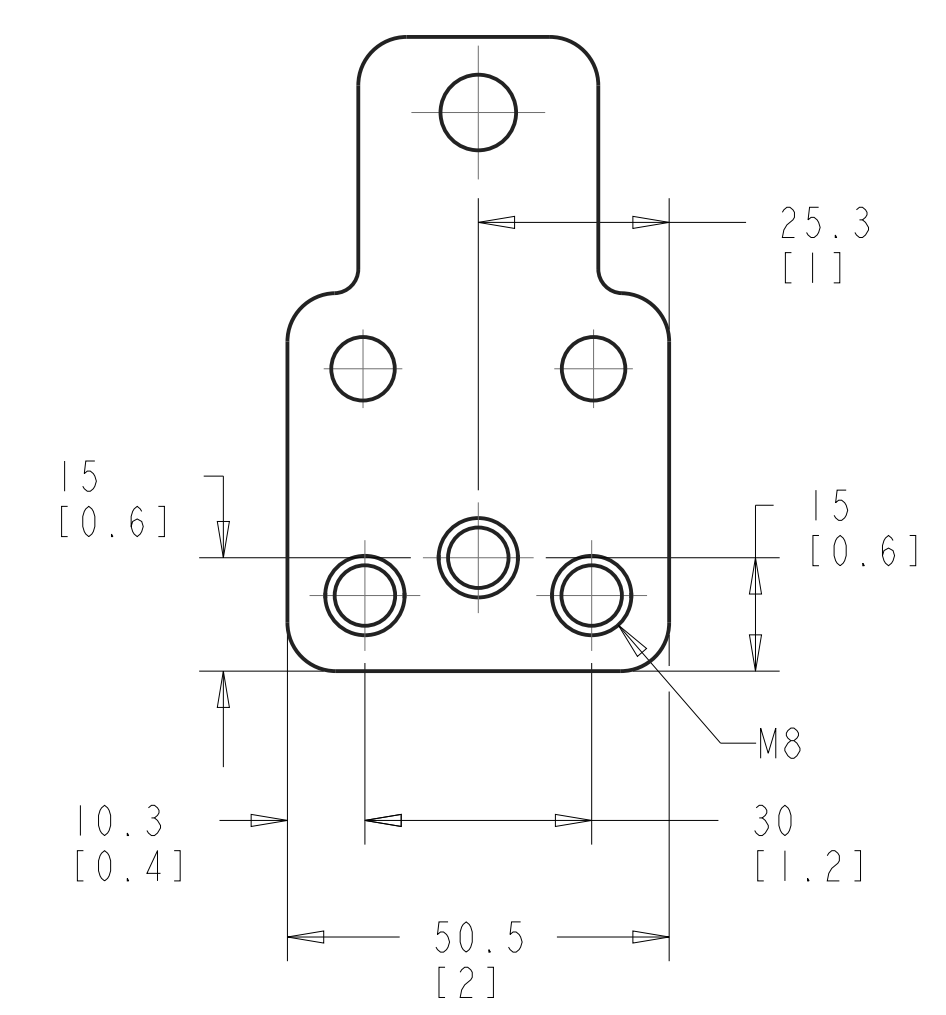


120.7 [4.8]  
0 [0]

MAINS TERMINAL  
MOTOR TERMINAL



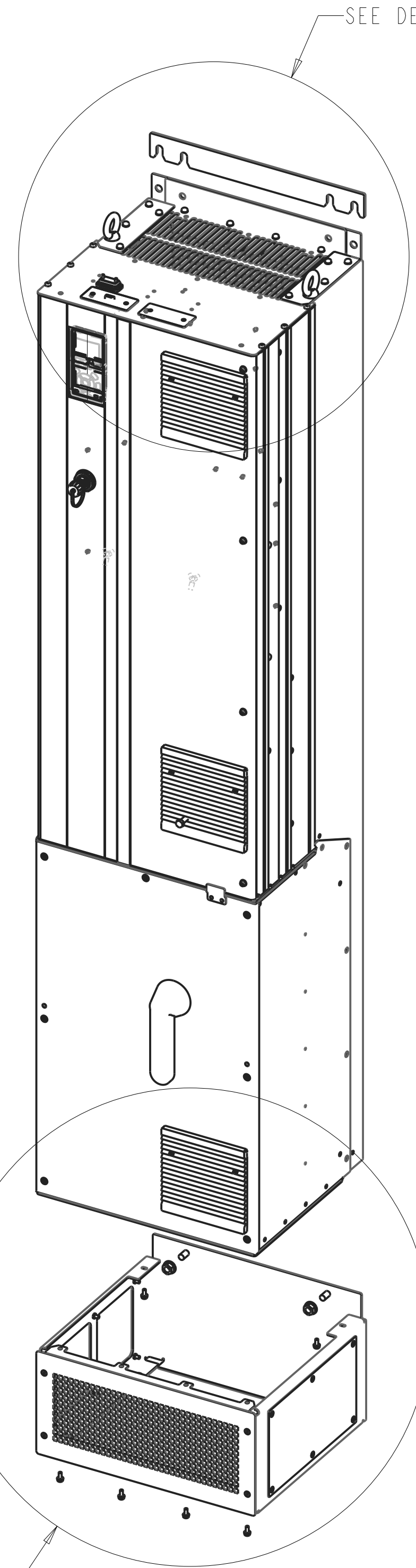
BRAKE TERMINAL



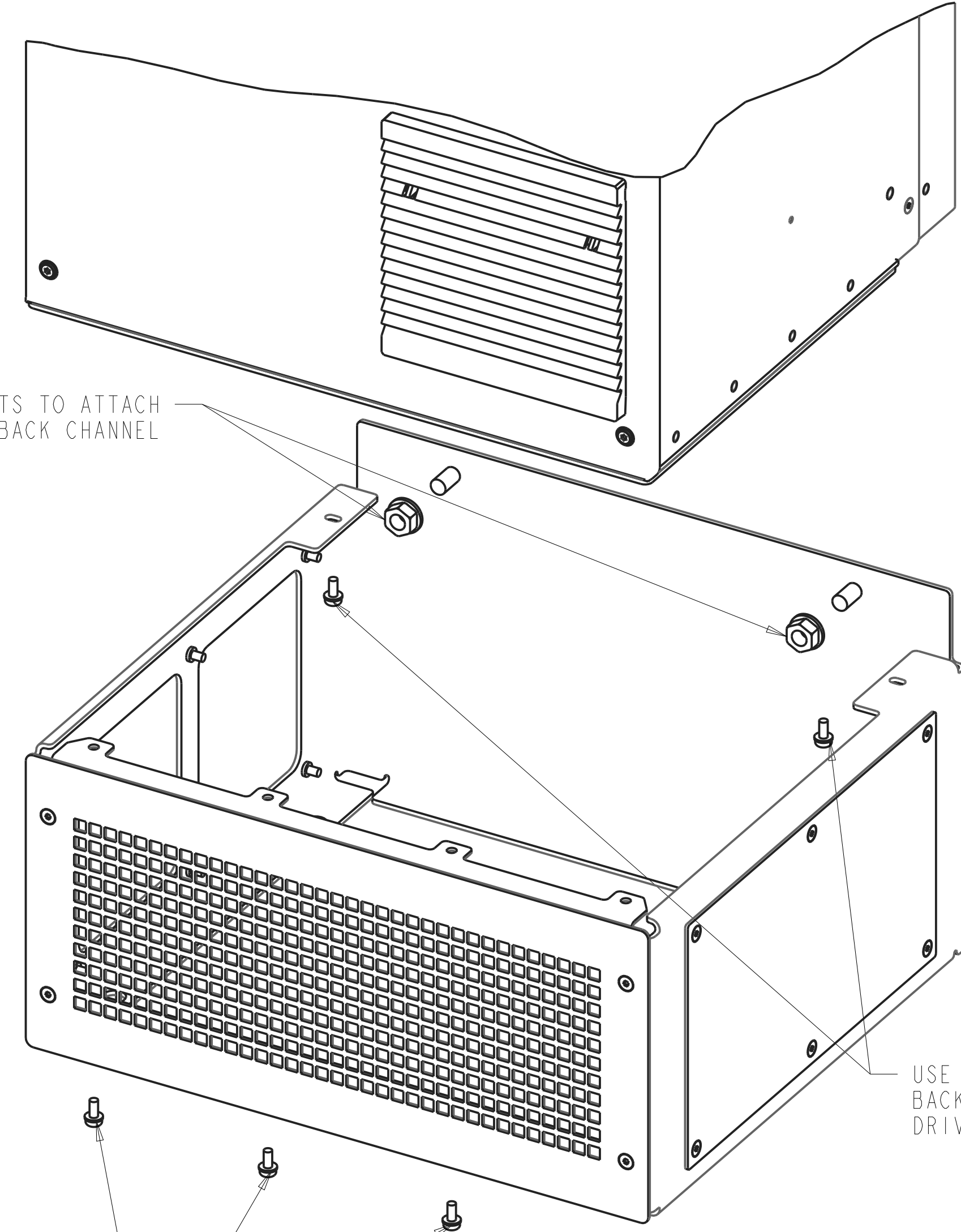
- 002 NOTES:
1. PLACE CABLES THROUGH MARKED AREAS.
  2. 185MM<sup>2</sup> (400 KCMIL) MAX WIRE SIZE FOR TWO CABLES PER PHASE.
  3. 70MM<sup>2</sup> (2/0 MCM) MAX WIRE SIZE FOR FOUR CABLES PER PHASE.

TITLE		
INSTALLATION DRAWING, DTH, IP21/54		
SIZE	MODEL	REV
D	P454-1087	002
SCALE	DRAWING NO.	SHEET
0.250	177R0492	4 OF 6

# PEDESTAL INSTALLATION



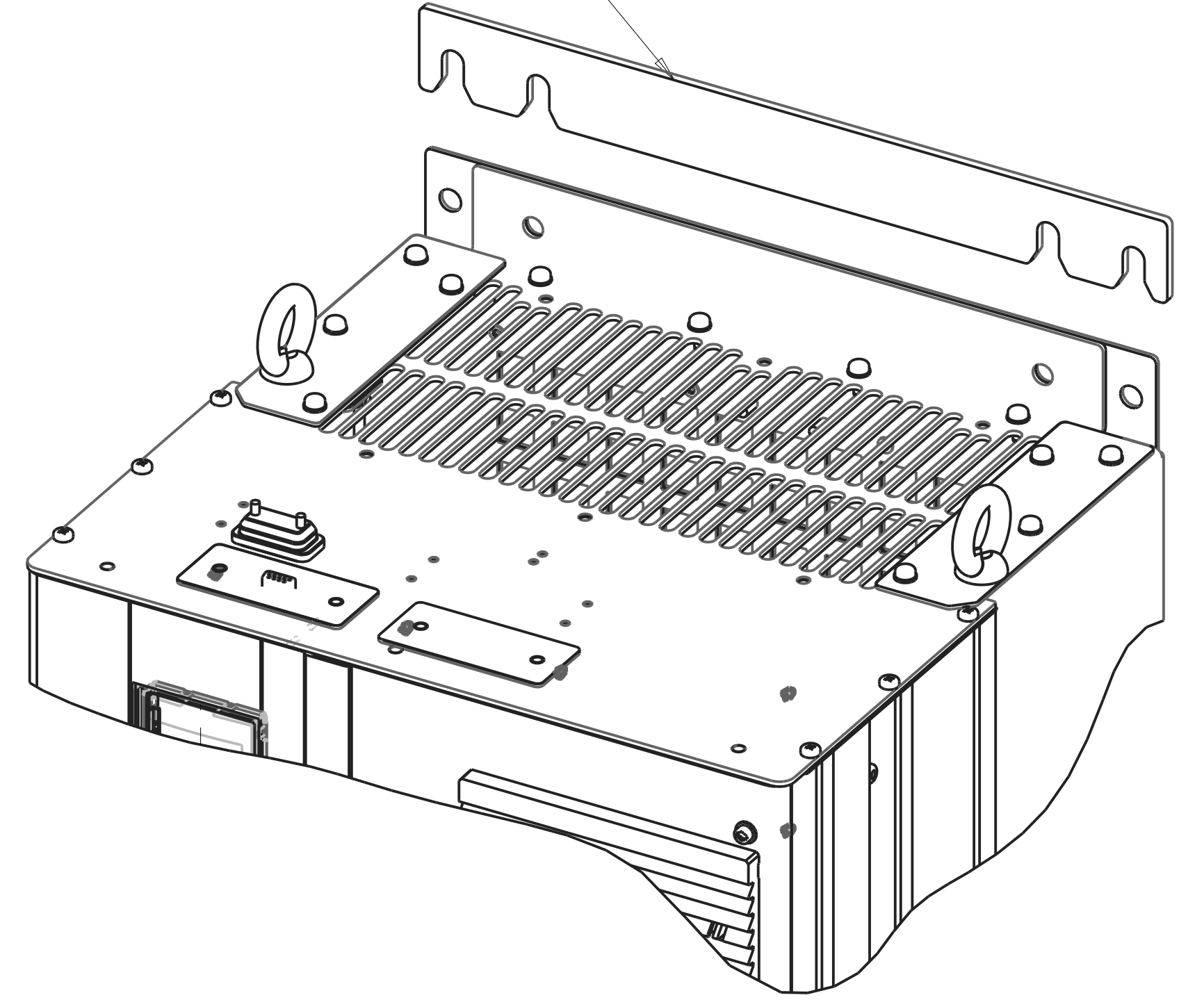
USE (2) 26516 M10 NUTS TO ATTACH PEDESTAL TO DRIVE BACK CHANNEL



USE (4) 681X9143 M5 SCREWS THROUGH FRONT PEDESTAL FLANGE INTO FRONT GLAND PLATE MOUNTING HOLES

DETAIL B  
SCALE 0.400

SLIDE PEDESTAL WALL SPACER BEHIND TOP DRIVE MOUNTING FLANGE BEFORE ATTACHING ENCLOSURE TO WALL



DETAIL C  
SCALE 0.400

USE (2) 681X9143 M5 SCREWS THROUGH BACK PEDESTAL FLANGE INTO PEDESTAL DRIVE MOUNTING BRACKET

- NOTES:
- 1) GLAND PLATE MUST BE INSTALLED BEFORE PEDESTAL
  - 2) SEE PAGE 1 FOR FLOOR MOUNTING DIMENSIONS

TITLE			
INSTALLATION DRAWING, DTH, IP21/54			
SIZE	MODEL	REV	
D	P454-1087	002	
SCALE	DRAWING NO.	SHEET	
0.150	177R0492	5 OF 6	

THE TABLES BELOW ARE USED TO DETERMINE THE FRAME SIZE FOR A GIVEN POWER AND VOLTAGE RATING, WITH A BREAK CHOPPER AND/OR DISCONNECT.

1) IDENTIFY THE POWER IN NORMAL OVERLOAD (N.O.) OR HIGH OVERLOAD (H.O.), KILOWATTS (KW) OR HORSEPOWER (HP).

2) READ DOWN THE COLUMN TO THE ROW WITH THE CORRECT VOLTAGE TO IDENTIFY THE FRAME SIZE.

THIS DRAWING IS FOR D7H FRAMES,

THE TABLE BELOW CAN BE USED TO DETERMINE THE FRAME SIZE IF THE SPECIFIC MODEL/TYPE CODE WITH A BREAK CHOPPER AND/OR DISCONNECT, IS KNOWN.

KW RATED DRIVES						
<b>KW HIGH OVERLOAD</b>	132	160	200	250	315	315
<b>KW NORMAL OVERLOAD</b>	160	200	250	315	355	400
<b>400V</b>		D7H	D7H	D7H		
<b>500V</b>			D7H	D7H	D7H	
<b>525V</b>	D7H	D7H	D7H	D7H		
<b>690V</b>		D7H	D7H	D7H		D7H

HORSEPOWER RATED DRIVES					
<b>HP HIGH OVERLOAD</b>	200	250	300	350	350
<b>HP NORMAL OVERLOAD</b>	250	300	350	400	450
<b>460V</b>		D7H	D7H		D7H
<b>575V</b>	D7H	D7H	D7H	D7H	

PLATFORM	VOLTAGE	MODEL/TYPECODE	FRAME(IP21/IP54)
HVAC	T4	FC-102N200T4	D7H
		FC-102N250T4	
		FC-102N315T4	
	T7	FC-102N200T7	
		FC-102N250T7	
		FC-102N315T7	
AQUA	T4	FC-202N200T4	
		FC-202N250T4	
		FC-202N315T4	
	T7	FC-202N200T7	
		FC-202N250T7	
		FC-202N315T7	
AUTOMATION	T5	FC-302N160T5	
		FC-302N200T5	
		FC-302N250T5	
	T7	FC-302N160T7	
		FC-302N200T7	
		FC-302N250T7	