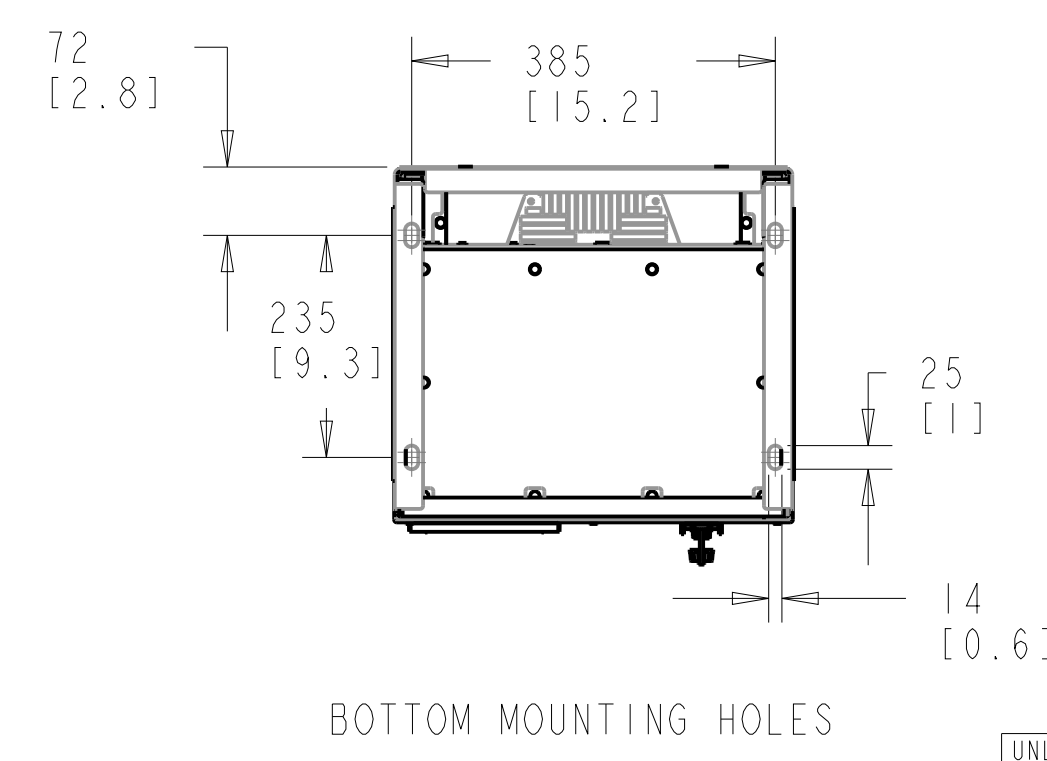
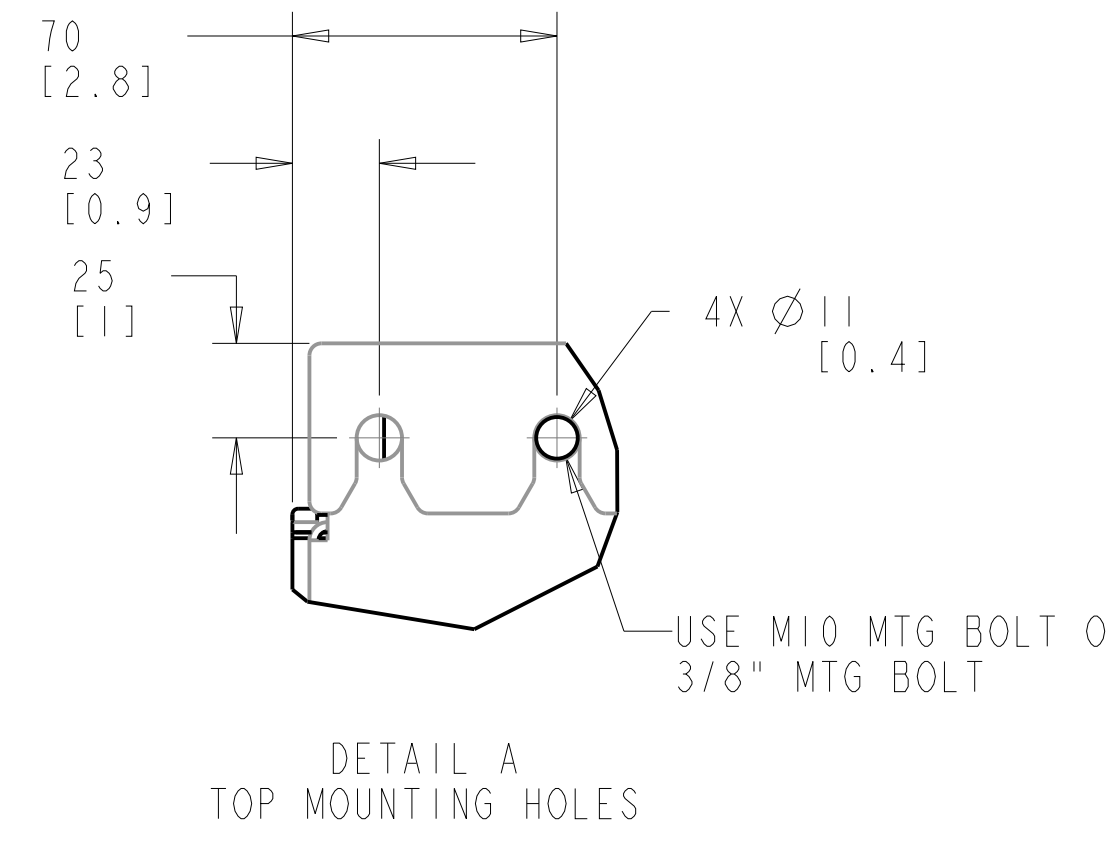
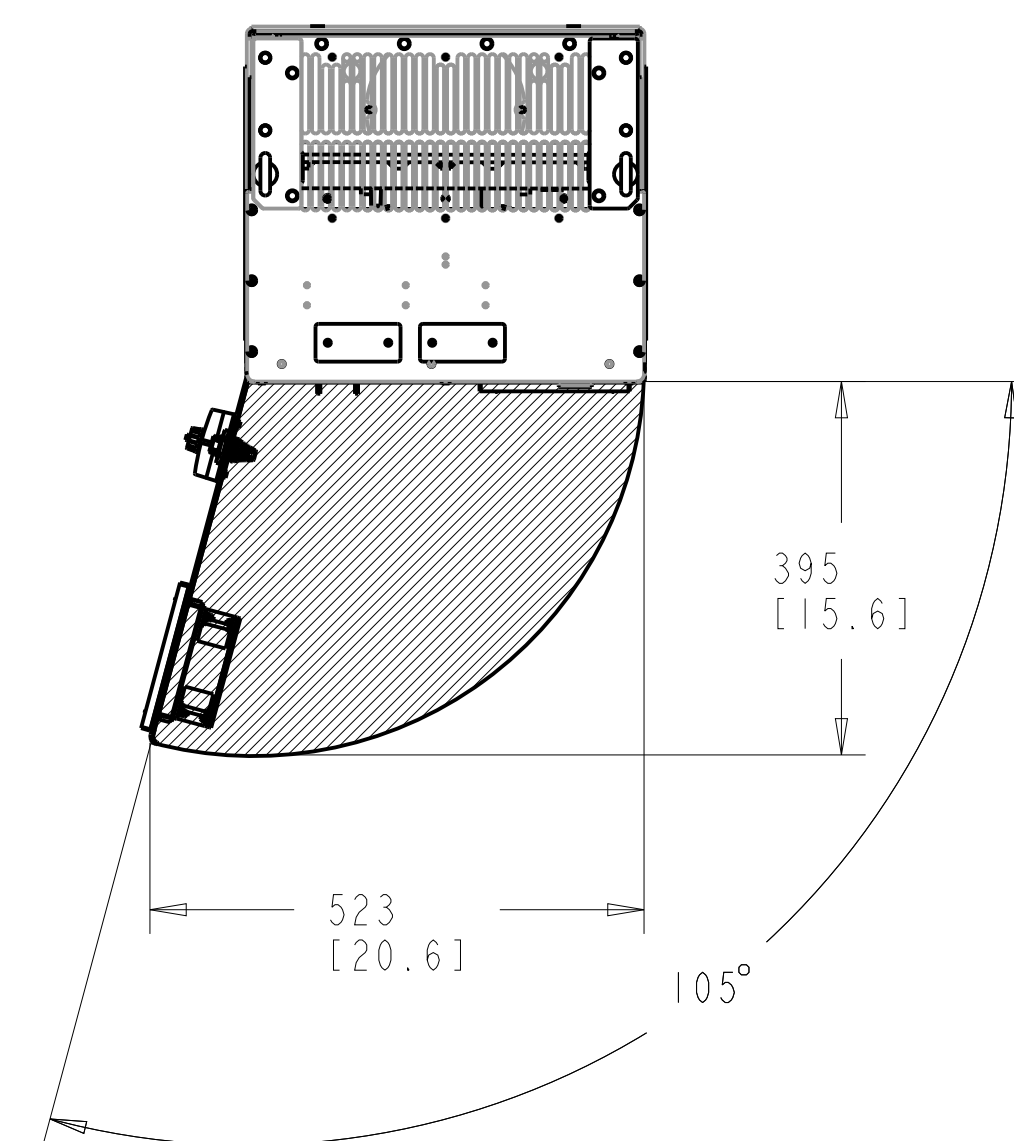
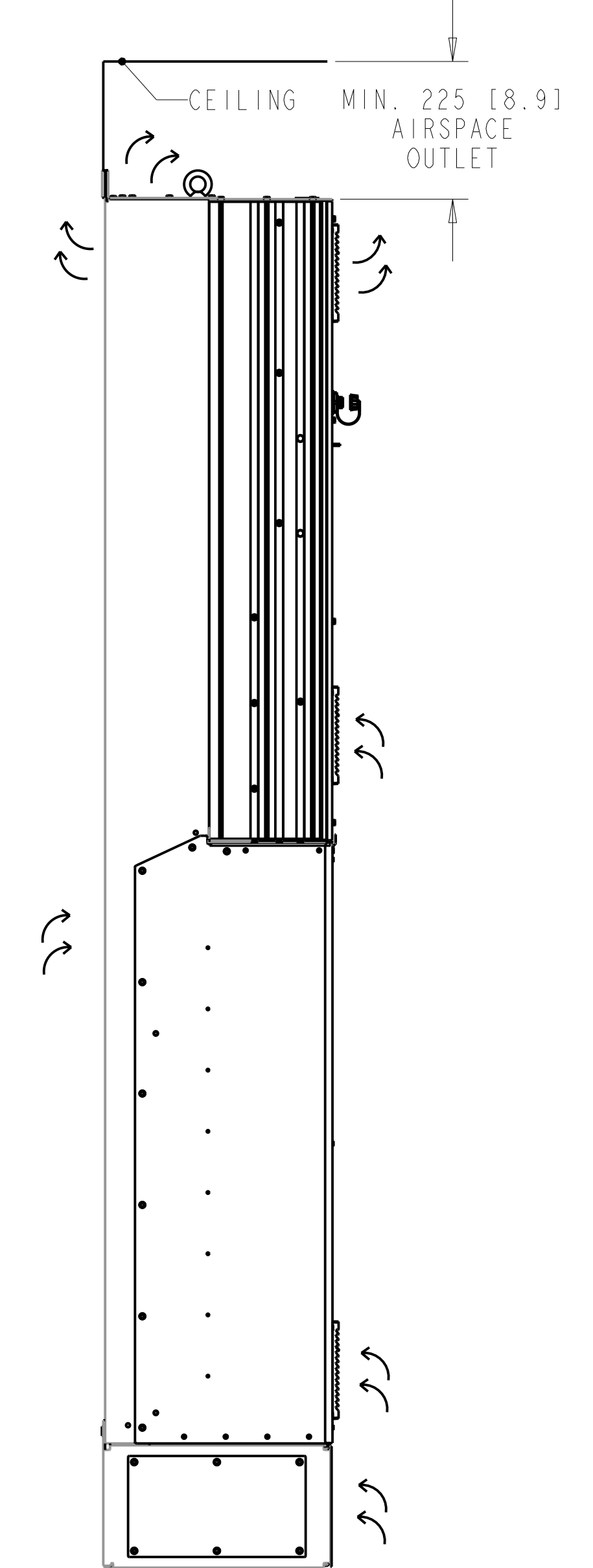
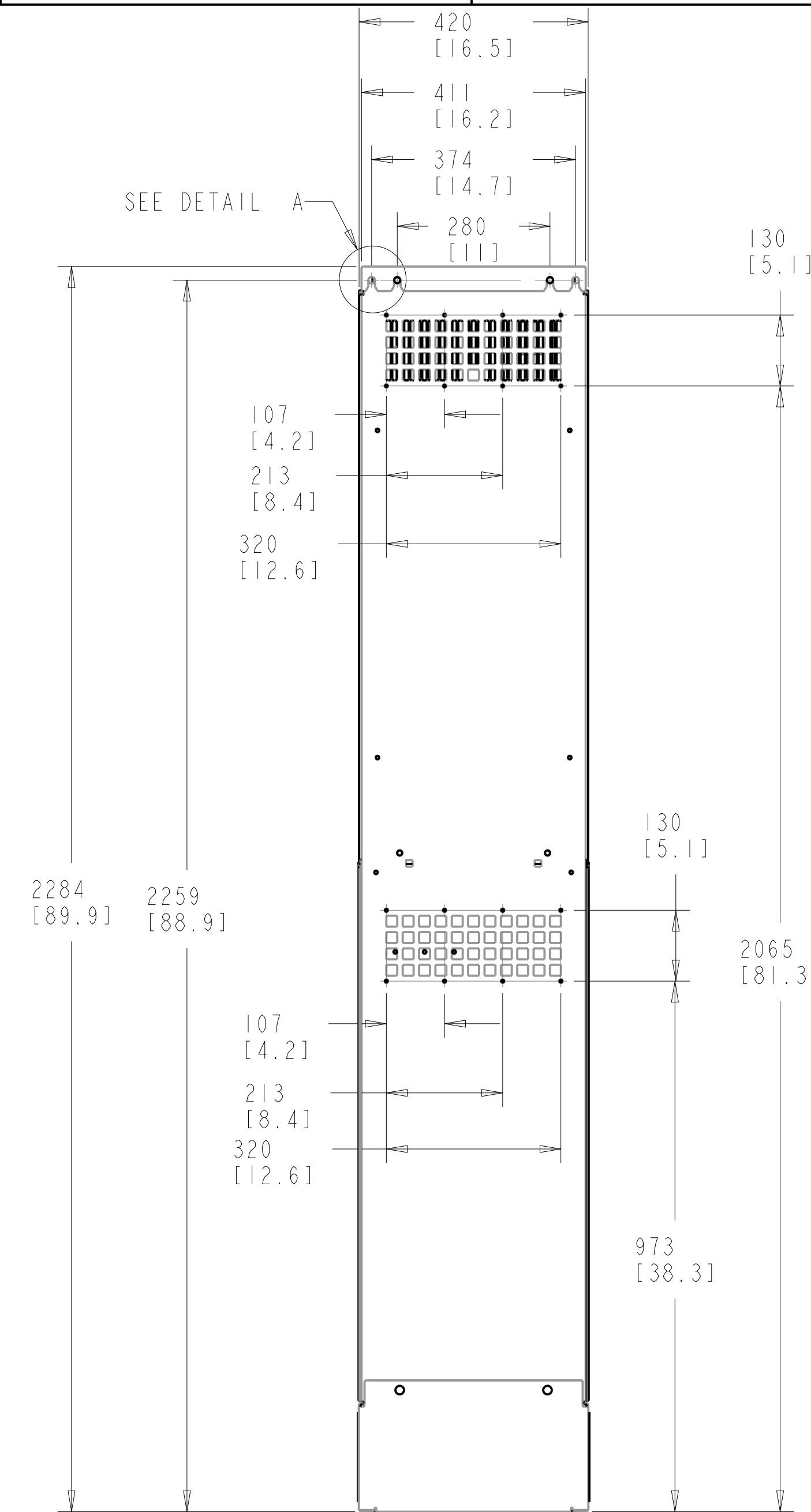
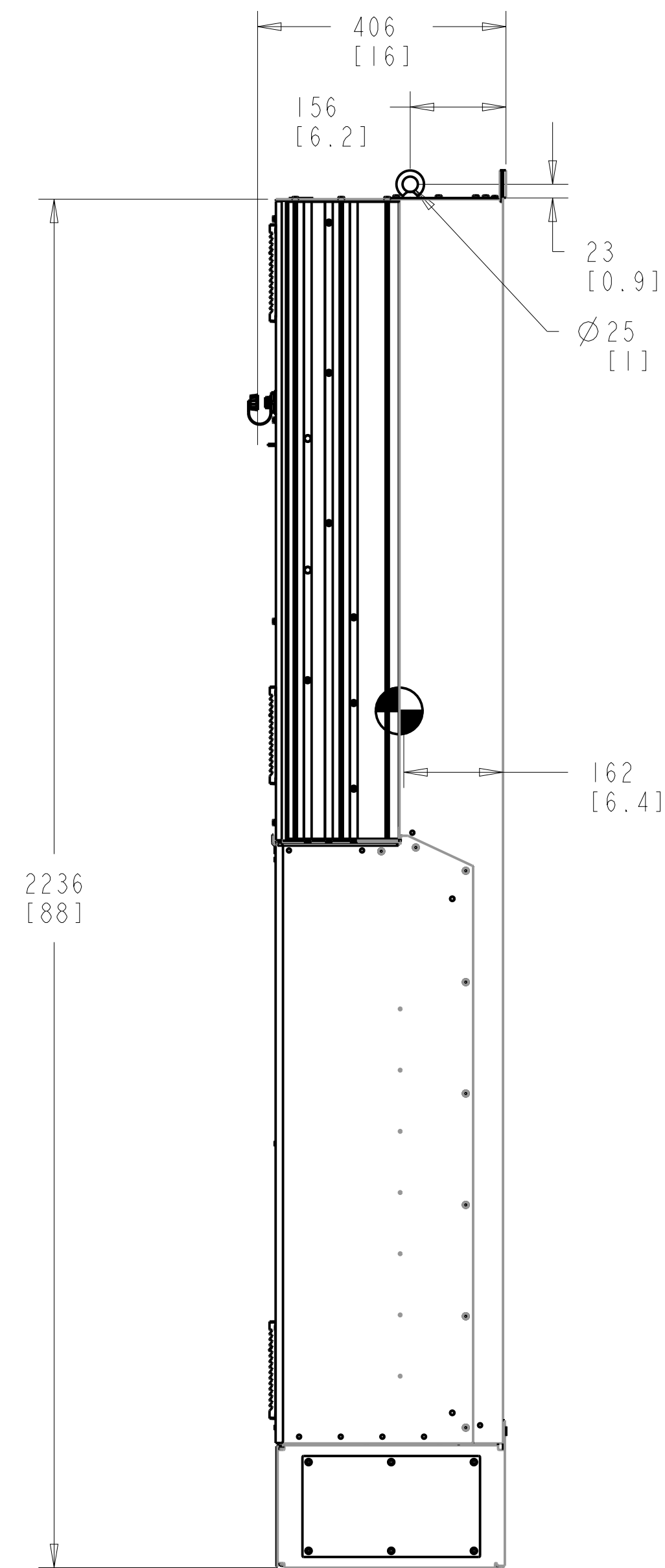
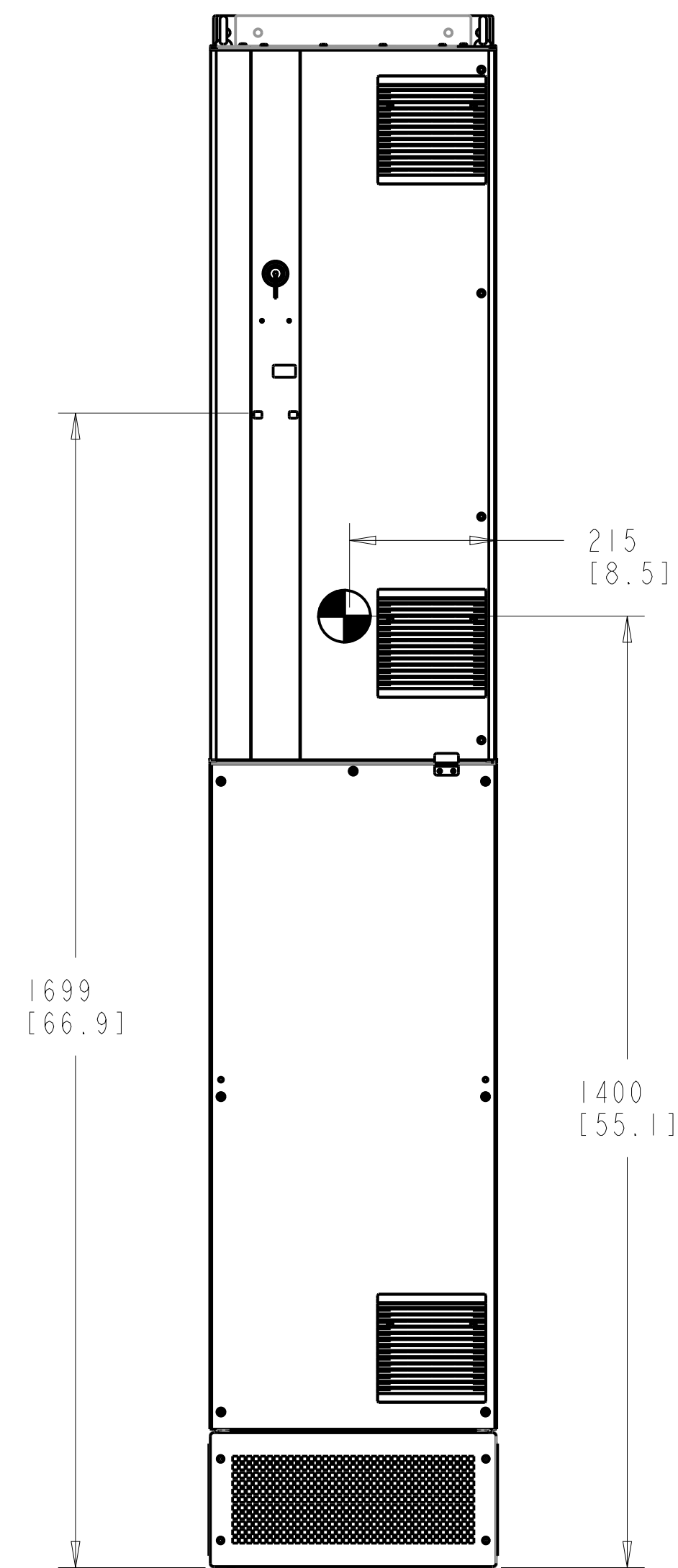


- NOTICE -
THIS DRAWING IS PROPRIETARY AND SHALL NOT BE COPIED OR ITS CONTENTS DISCLOSED TO OUTSIDE PARTIES WITHOUT THE WRITTEN CONSENT OF THE TRANE COMPANY

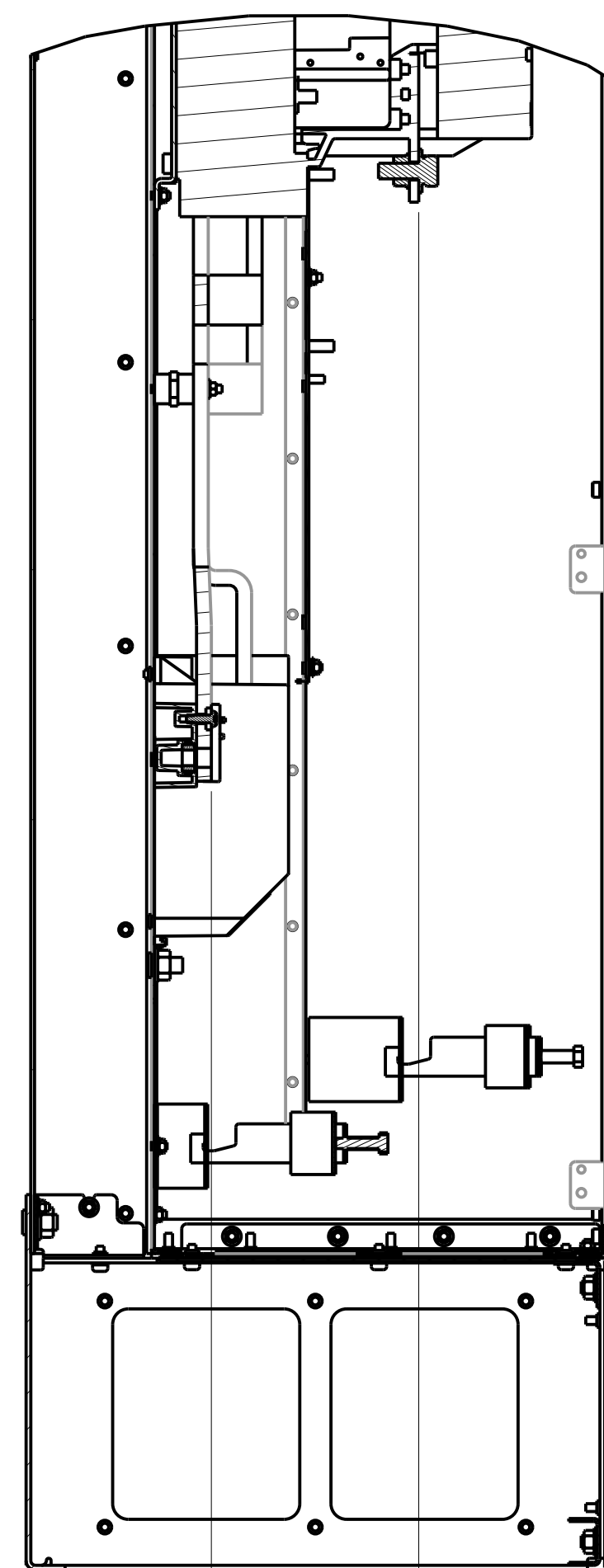


1. MAX AIRFLOW (BACKCHANNEL) - 14 M³ / MIN (500 CFM)
2. MAX AIRFLOW (CABINET) - 3.4 M³ / MIN (120 CFM)
3. MAX WEIGHT = 232 KG (512 LBS)
4. CENTER OF GRAVITY:
APPROXIMATE LOCATION ONLY, LOCATION MAY VARY BASED ON POWER RATING AND OPTIONS ORDERED.

UNLESS OTHERWISE SPECIFIED INTERPRET DIM. AND TOL. PER ASME Y14.5M-1994 XX±0.4 .XX±0.20 ±0.5 DIM. ARE IN MILLIMETERS WEIGHTS ARE IN KILOGRAMS THIRD ANGLE PROJECTION	PROPERTIES			THE TRANE COMPANY INSTALLATION DRAWING, D8H, TRANE SIZE D MODEL P454-1042 REV 001 SCALE 0.125 DRAWING NO. 177R0562 SHEET 1 OF 6
	MATERIAL			
	FINISH			
	THICKNESS			
EST. WEIGHT	232.00			
APPROVALS	INITIALS	DATE		
DRAWN	KD	11/04/13		
CHECKED				
ENGR				

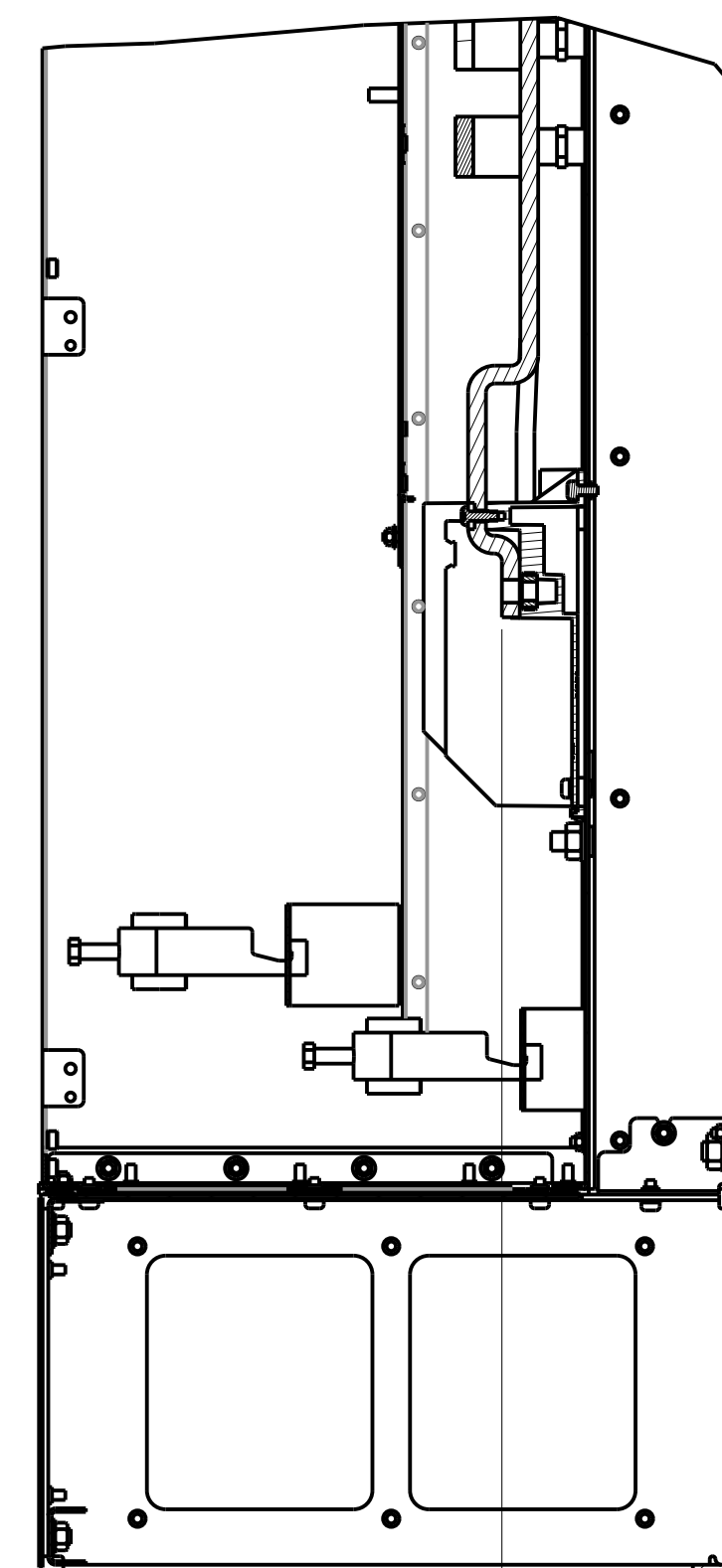
CONTACTOR ONLY

SECTION A-A
MAINS TERMINALS
BRAKE/REGEN TERMINALS

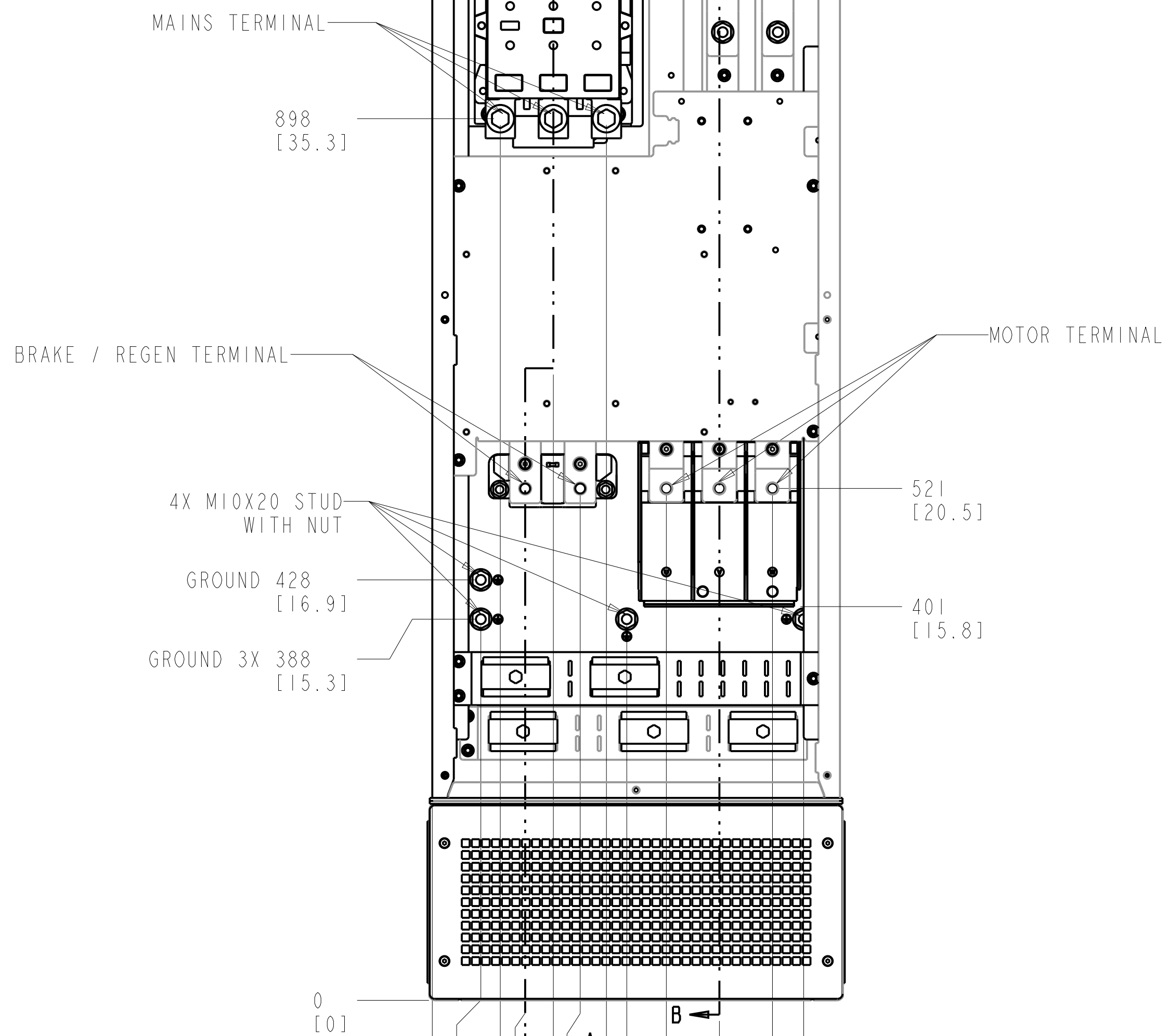


0 [0]
119 [4.7]
252 [9.9]

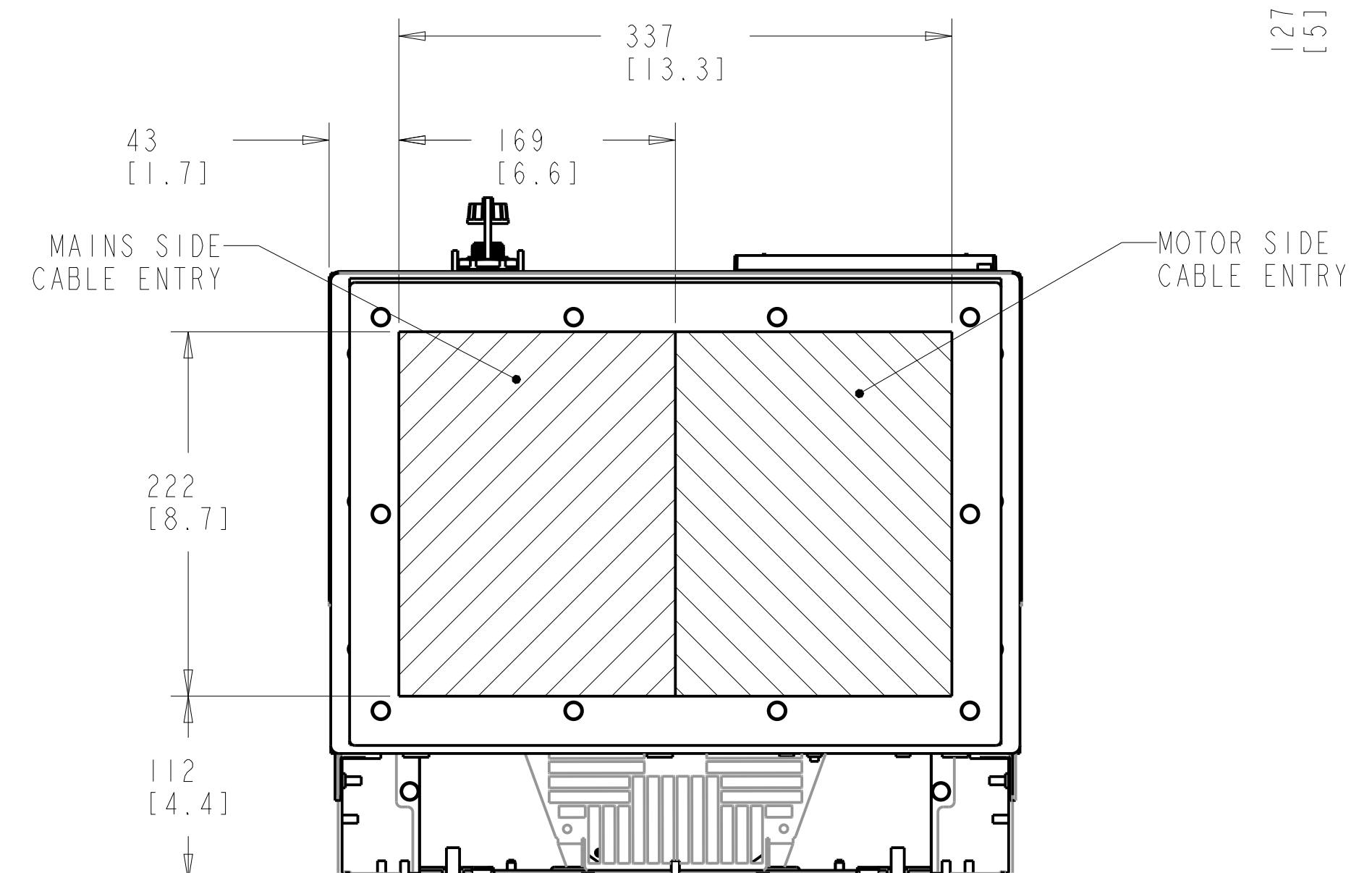
SECTION B-B
MOTOR TERMINALS



127 [5]
0 [0]

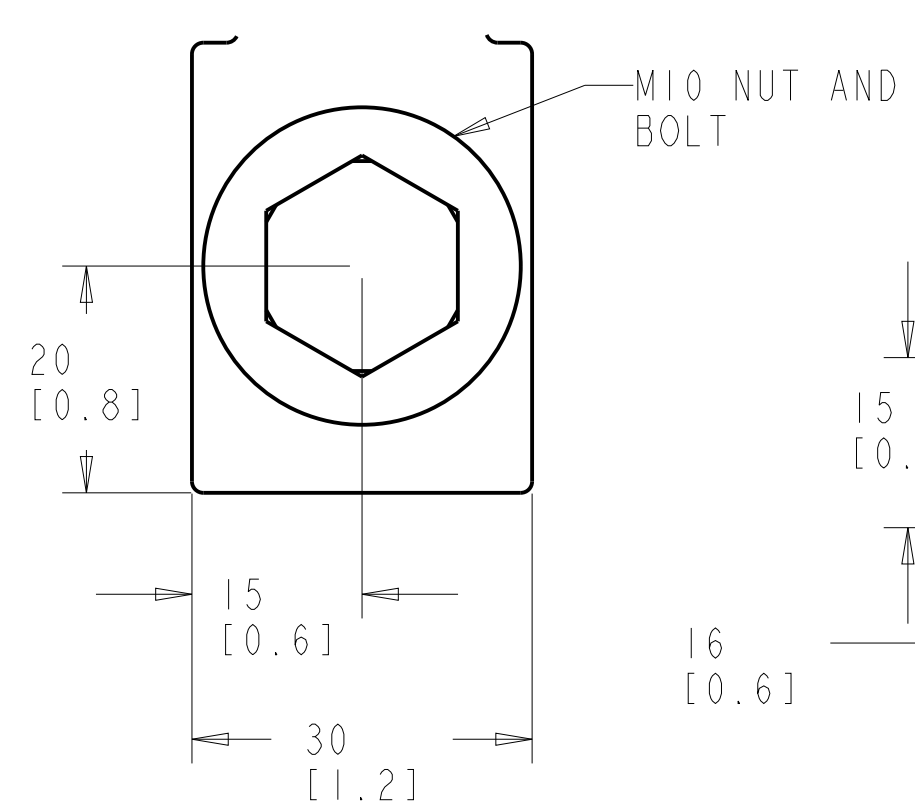


0 [0]
49 [1.9]
95 [3.7]
151 [5.9]
198 [7.8]
292 [11.5]
378 [14.9]
69 [2.7]
123 [4.9]
177 [7]
238 [9.4]
346 [13.6]

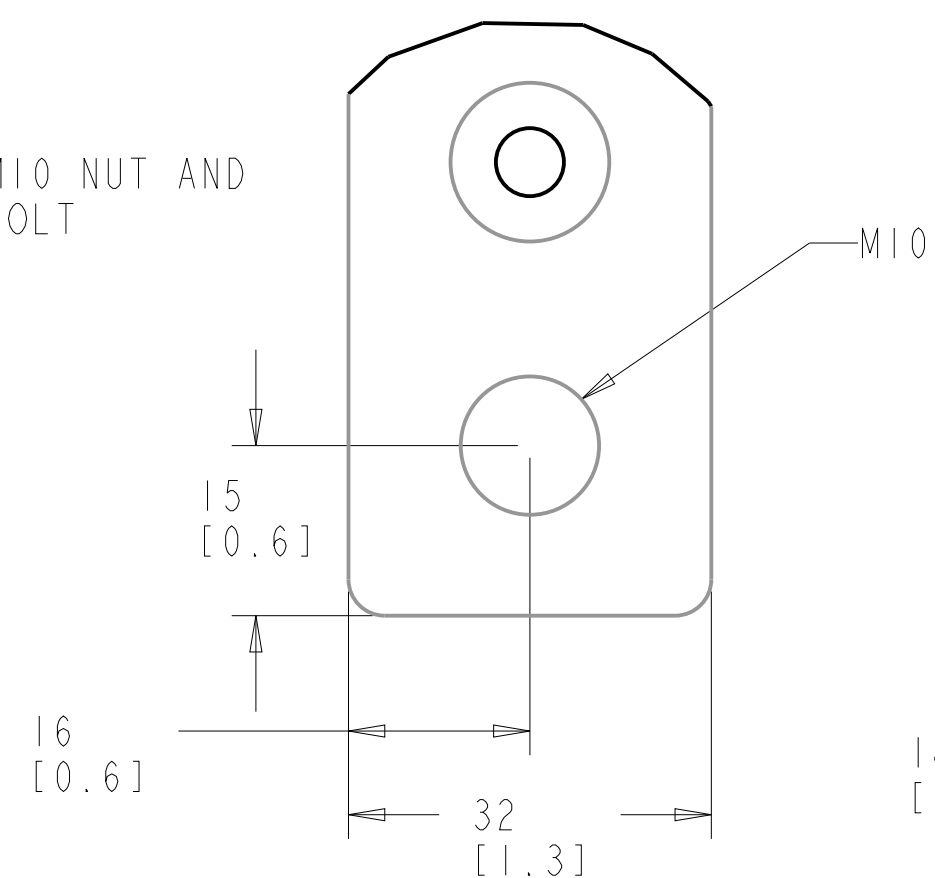


BOTTOM VIEW

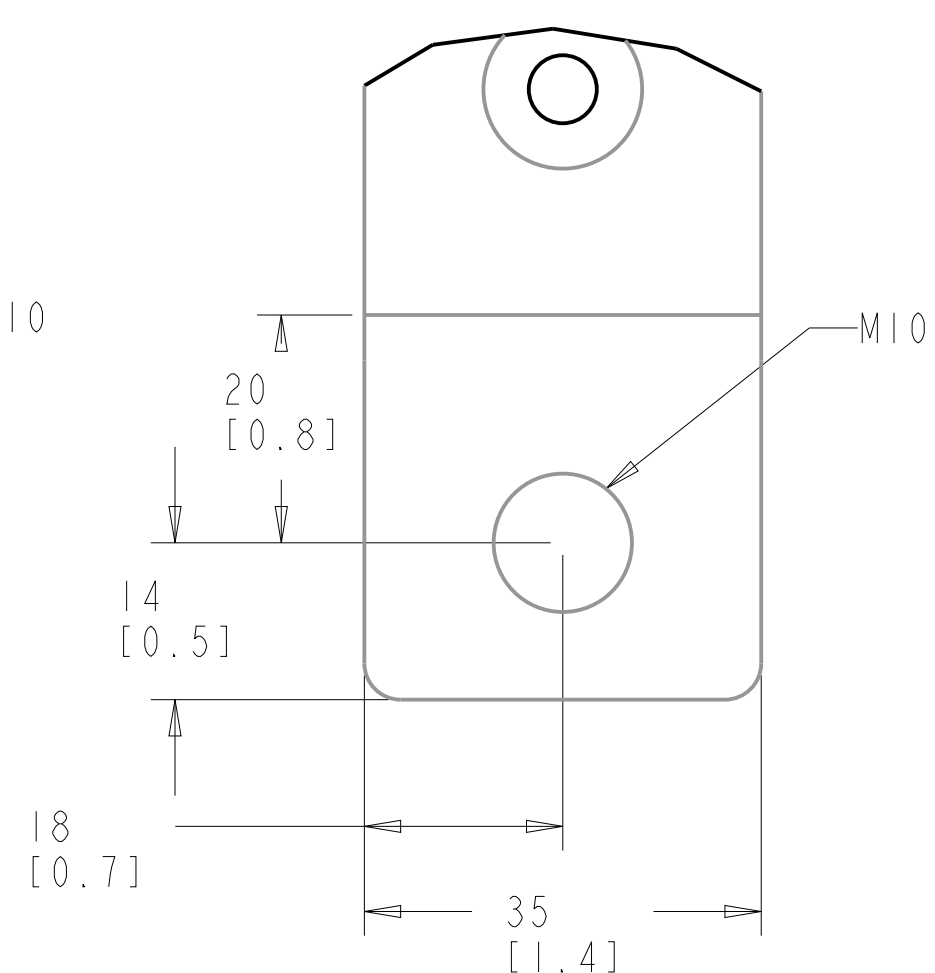
MAINS TERMINAL



BRAKE TERMINAL



MOTOR TERMINAL

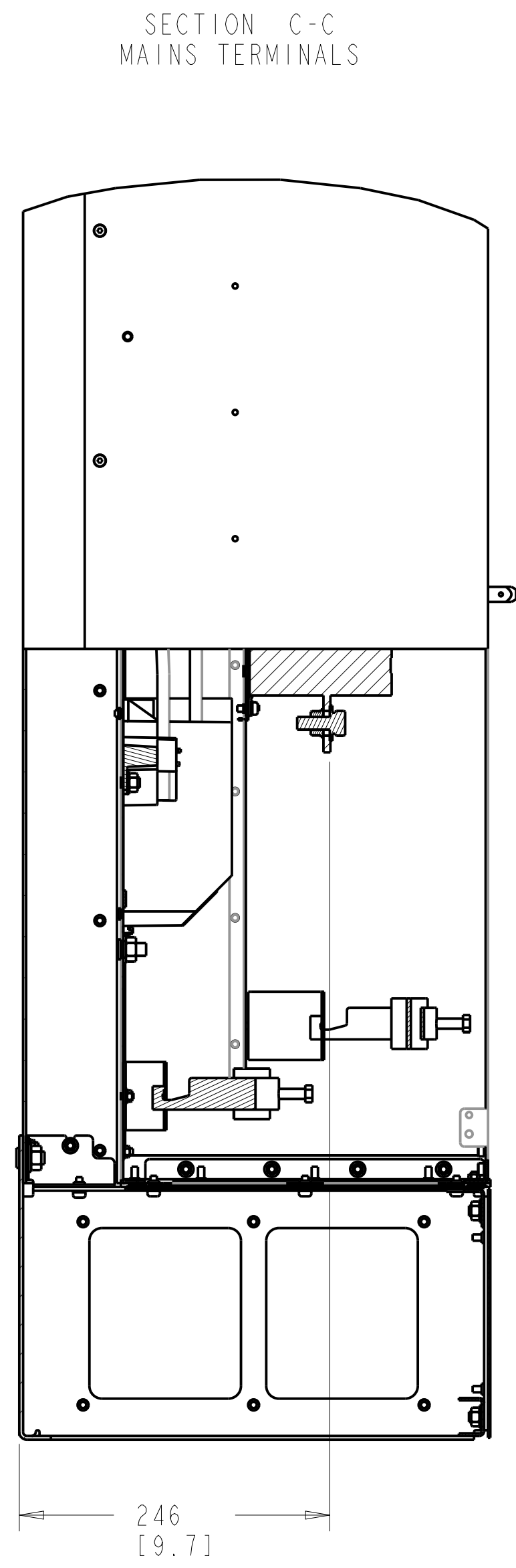
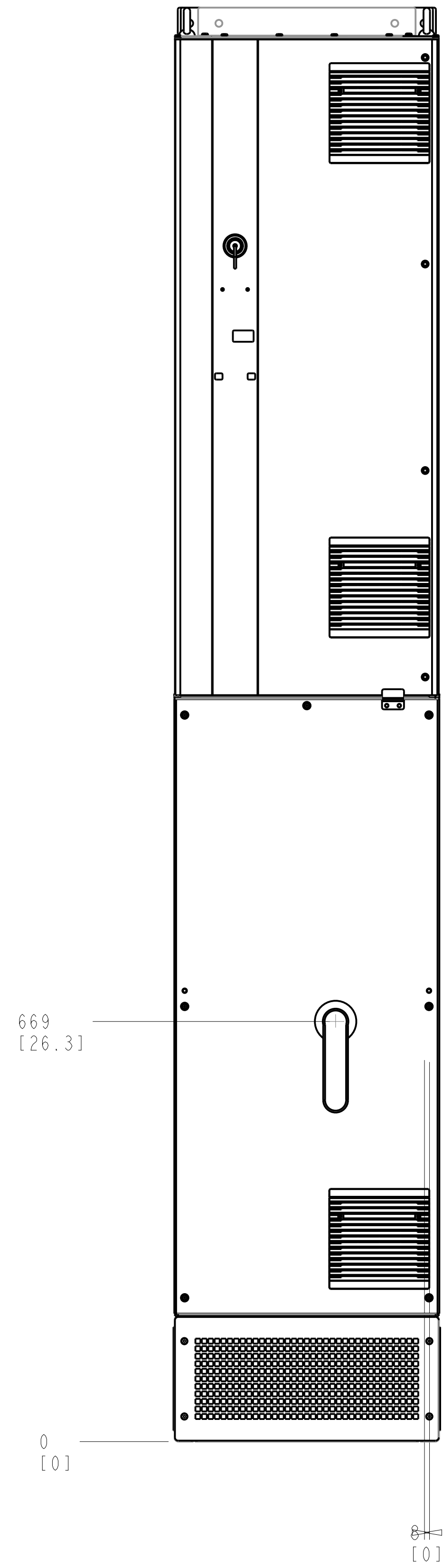


NOTES:

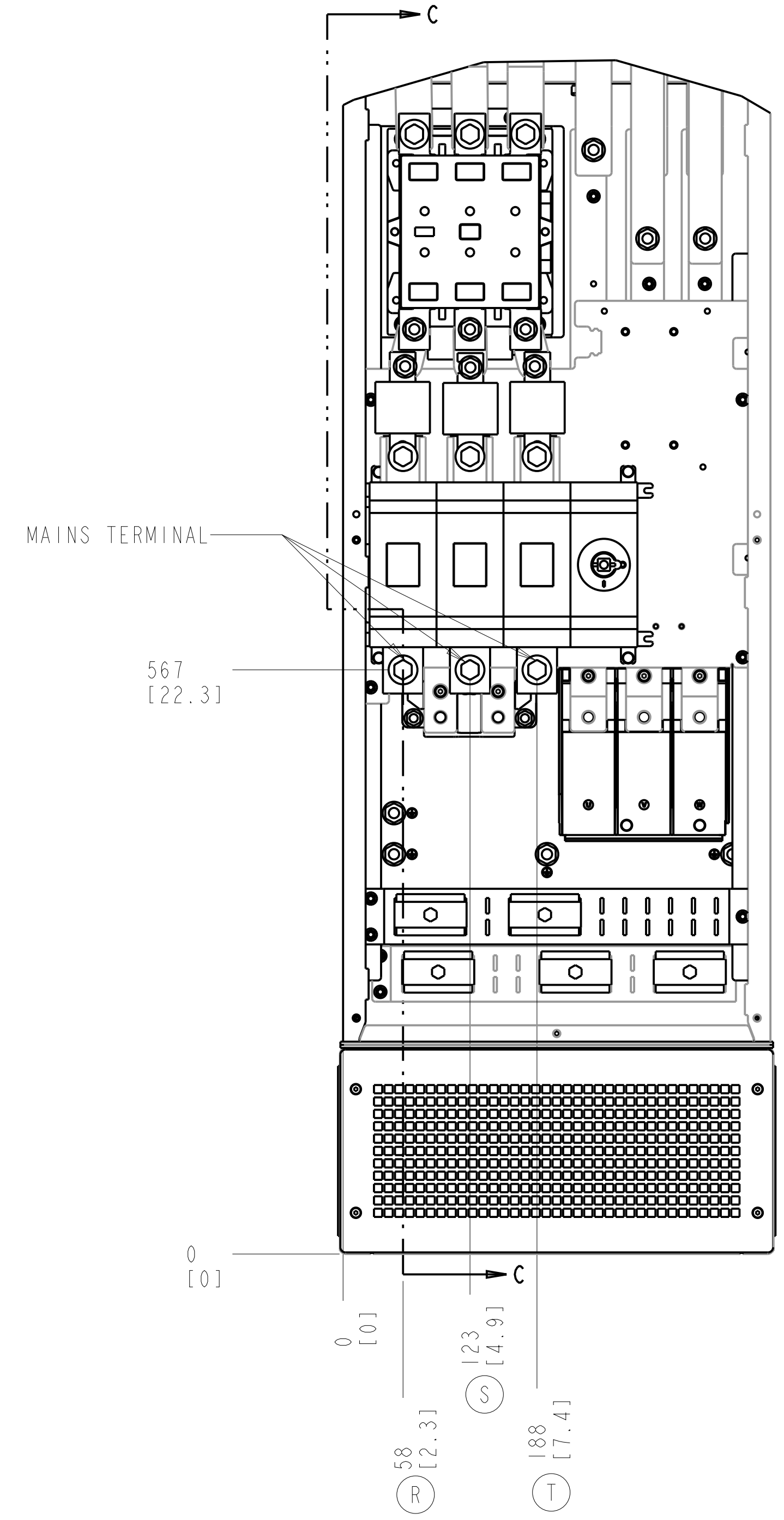
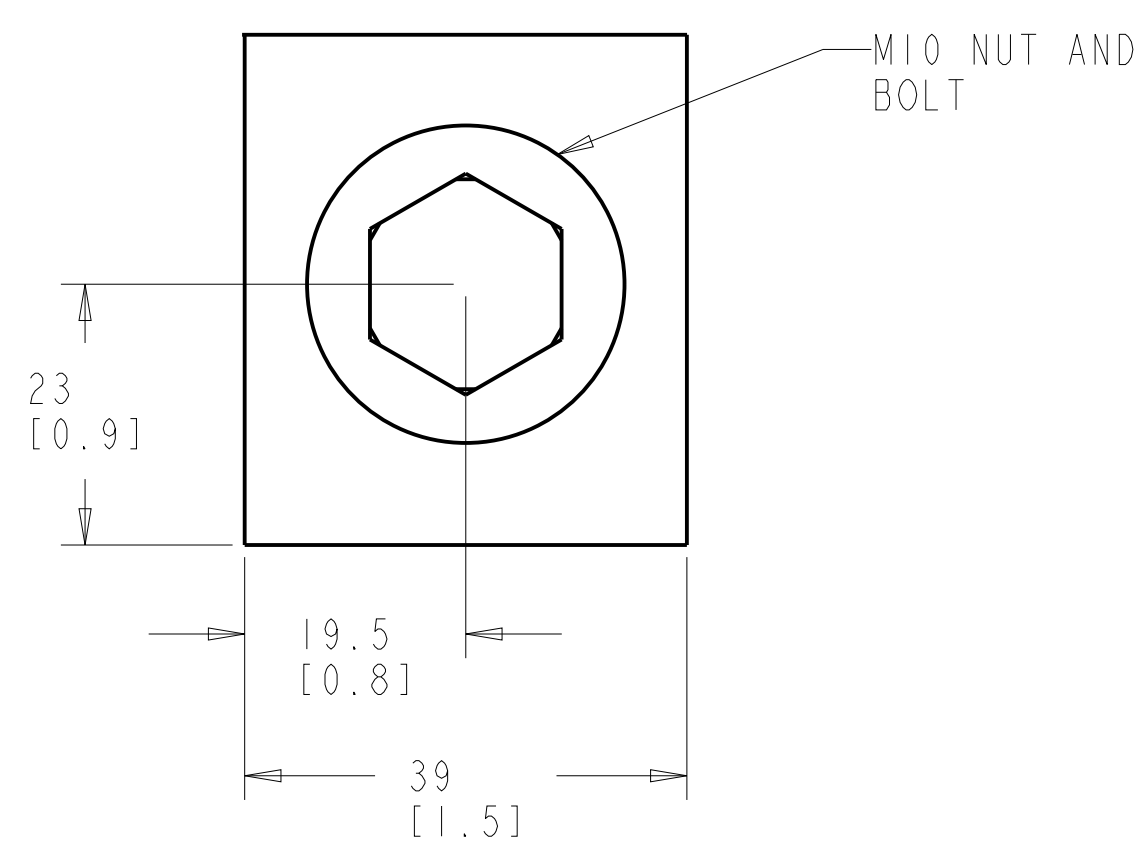
1. PLACE CABLES THROUGH MARKED AREAS
2. 185MM² (400 MCM) MAX WIRE SIZE

TITLE			
INSTALLATION DRAWING, D8H, TRANE			
SIZE D	MODEL P454-1042	REV 001	
SCALE 0.250	DRAWING NO. 177R0562	SHEET 2 OF 6	

CONTACTOR AND DISCONNECT



MAINS TERMINAL



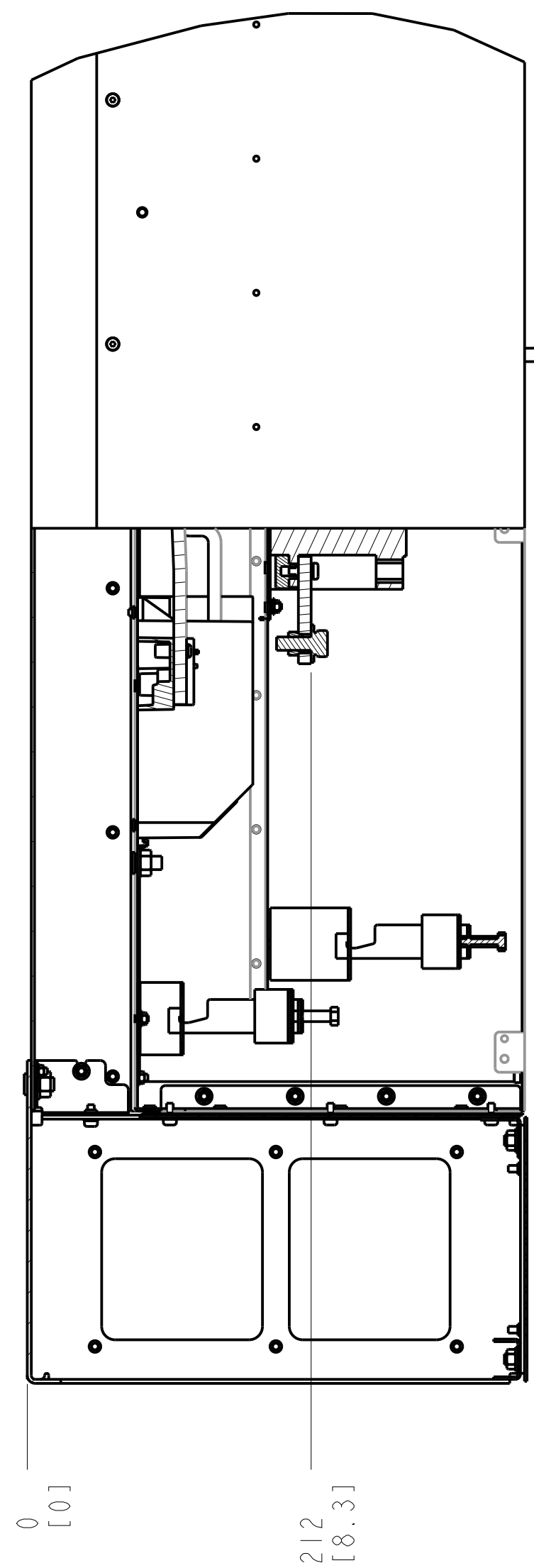
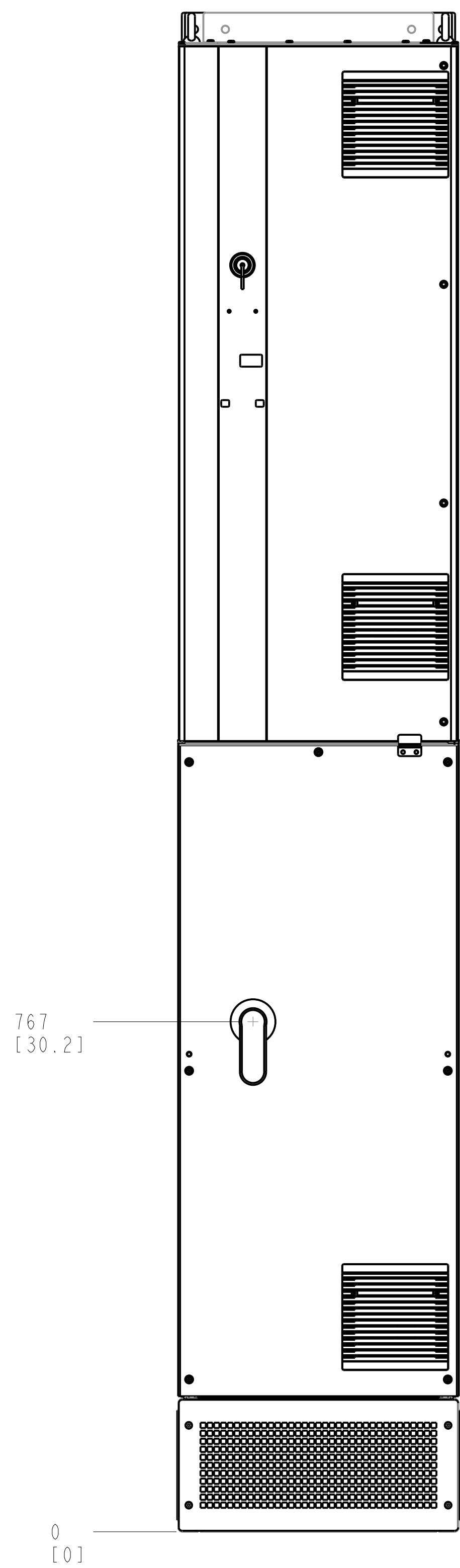
NOTES:

1. REFER SHEET 2 FOR BRAKE AND MOTOR TERMINAL DETAILS

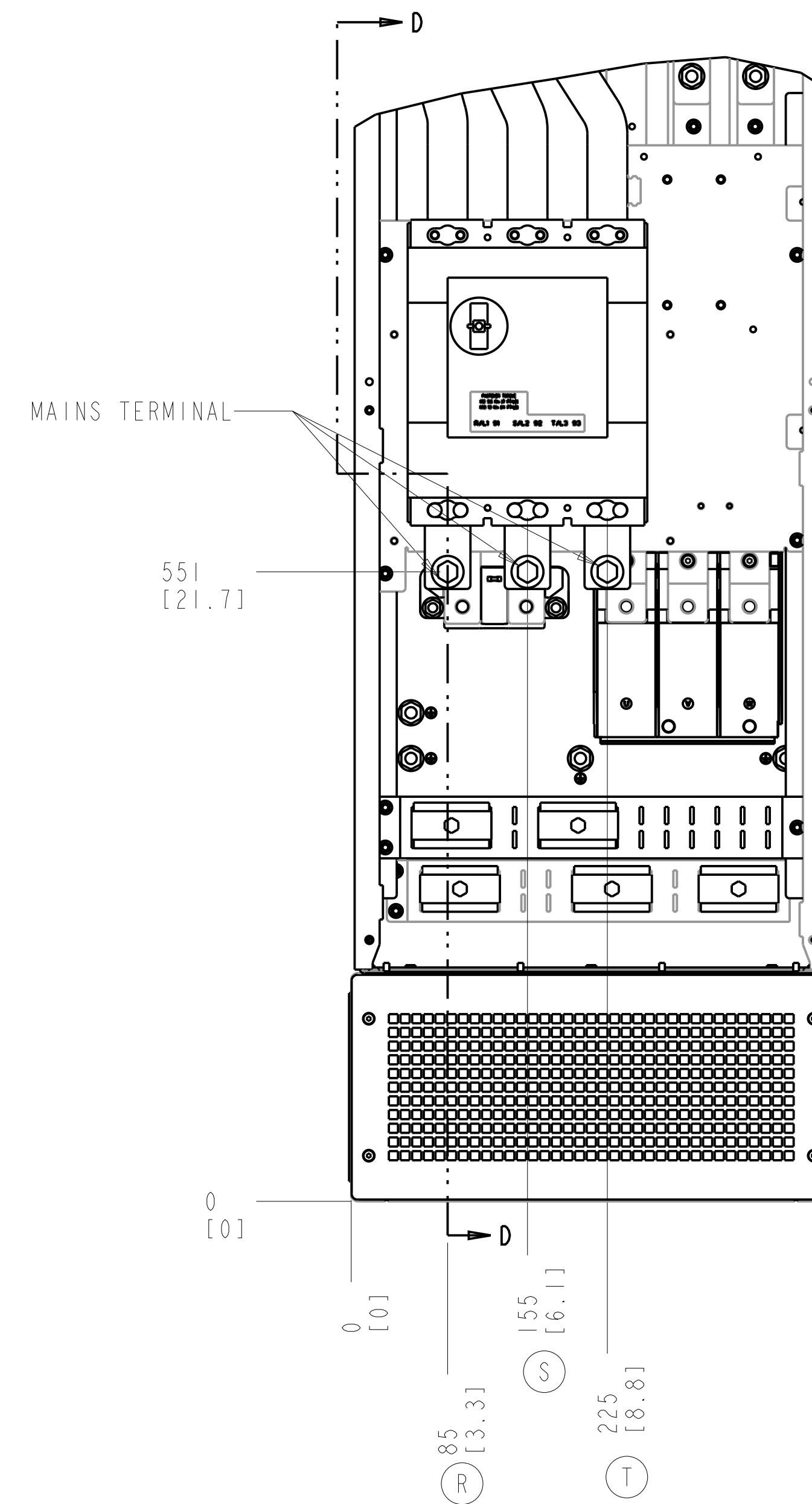
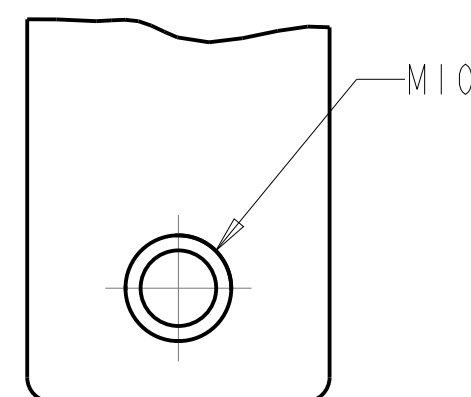
TITLE			
INSTALLATION DRAWING, D8H, TRANE			
SIZE	MODEL	REV	
D	P454-1042	001	
SCALE	DRAWING NO.	SHEET	
0.250	177R0562	3 OF 6	

CIRCUIT BREAKER

SECTION D-D MAINS TERMINALS



MAINS TERMINAL
SCALE 1.000

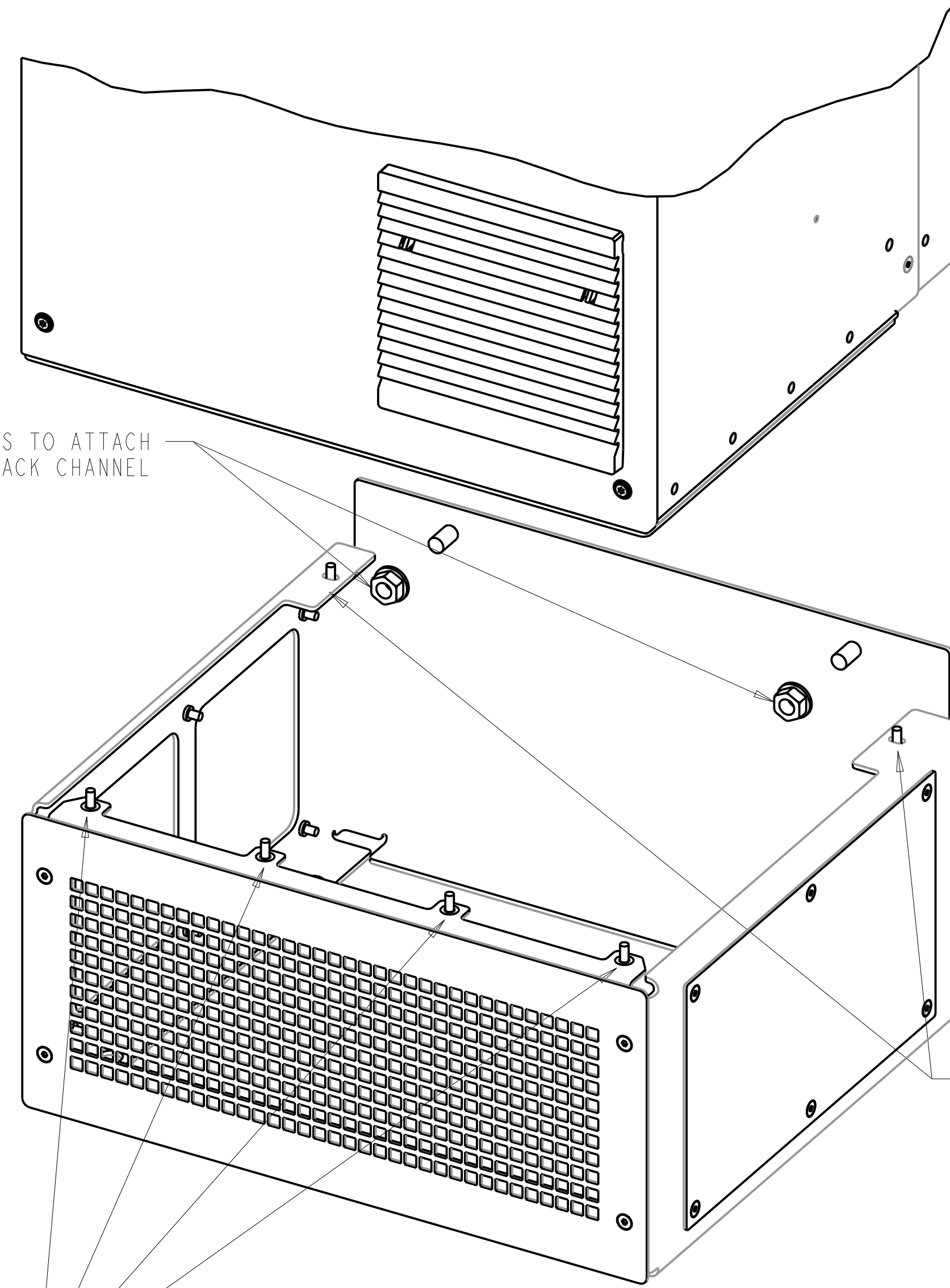
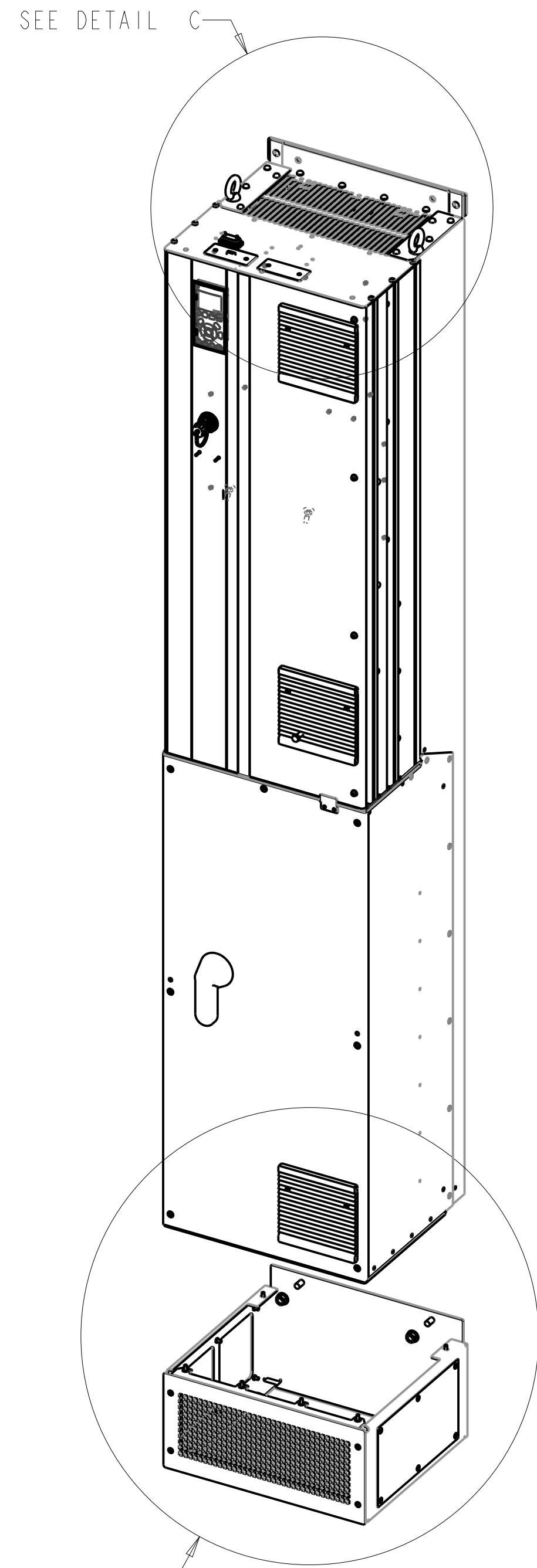


NOTES:

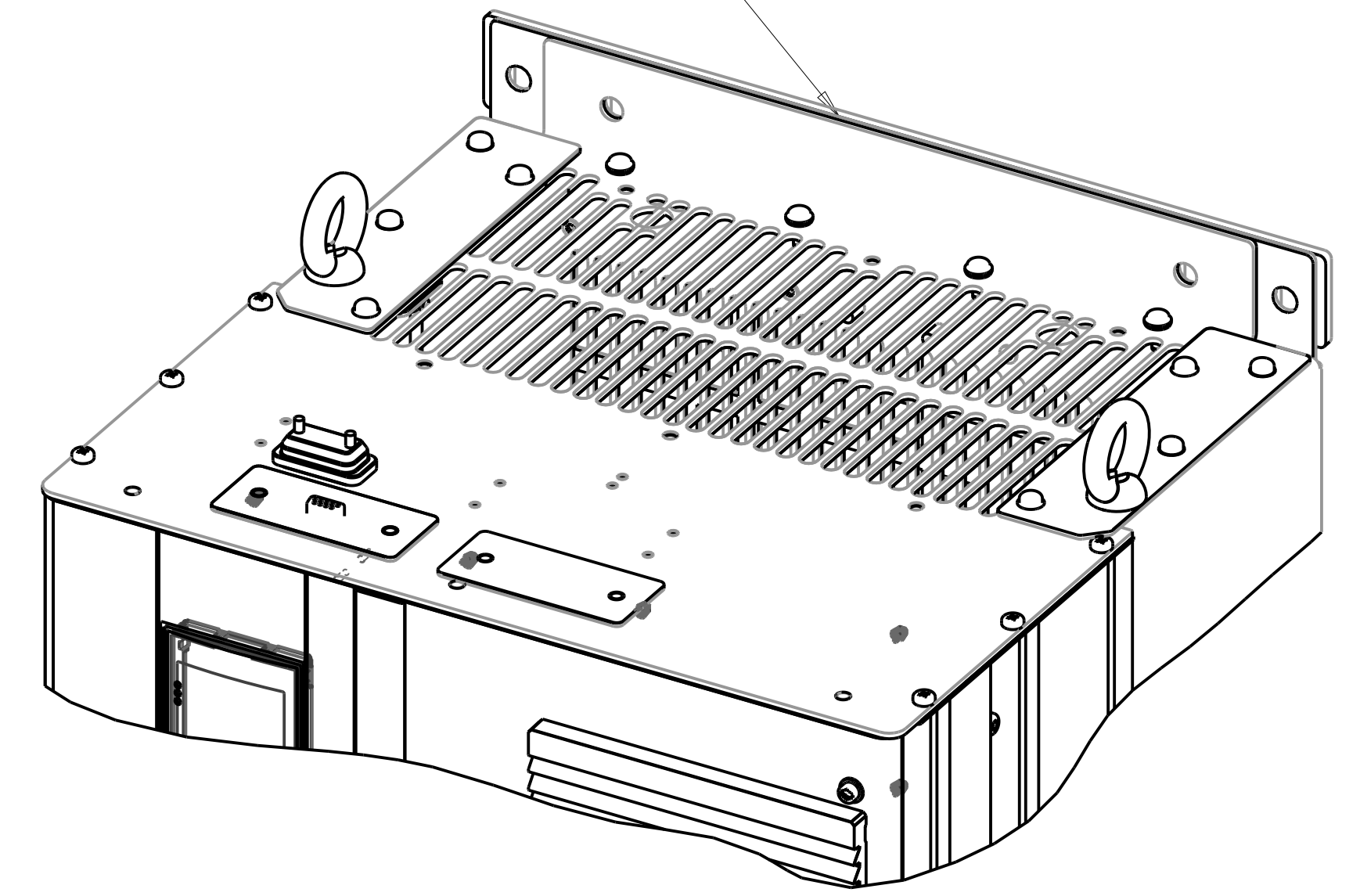
- REFER SHEET 2 FOR BRAKE AND MOTOR TERMINAL DETAILS

TITLE			
INSTALLATION DRAWING, D8H, TRANE			
SIZE	MODEL	REV	
D	P454-1042	001	
SCALE	DRAWING NO.	SHEET	
0.250	177R0562	4 OF 6	

PEDESTAL INSTALLATION



SLIDE PEDESTAL WALL SPACER BEHIND TOP DRIVE MOUNTING FLANGE BEFORE ATTACHING ENCLOSURE TO WALL



DETAIL C
SCALE 0.400

USE (2) 681X9143 M5 SCREWS THROUGH BACK PEDESTAL FLANGE INTO PEDESTAL DRIVE MOUNTING BRACKET

USE (4) 681X9143 M5 SCREWS THROUGH FRONT PEDESTAL FLANGE INTO FRONT GLAND PLATE MOUNTING HOLES

DETAIL B
SCALE 0.400

NOTES:

- 1) GLAND PLATE MUST BE INSTALLED BEFORE PEDESTAL
- 2) SEE PAGE 1 FOR FLOOR MOUNTING DIMENSIONS

TITLE			
INSTALLATION DRAWING, D8H, TRANE			
SIZE	MODEL	REV	
D	P454-1042	001	
SCALE	DRAWING NO.	SHEET	
0.125	177R0562	5 OF 6	

THE TABLES BELOW ARE USED TO DETERMINE THE FRAME SIZE FOR A GIVEN POWER AND VOLTAGE RATING, WITH A CIRCUIT BREAKER, CONTACTOR OR DISCONNECT + CONTACTOR.

1) IDENTIFY THE POWER IN NORMAL OVERLOAD (N.O.) OR HIGH OVERLOAD (H.O.), KILOWATTS (KW) OR HORSEPOWER (HP).

2) READ DOWN THE COLUMN TO THE ROW WITH THE CORRECT VOLTAGE TO IDENTIFY THE FRAME SIZE.

THIS DRAWING IS FOR D8H FRAMES,

THE TABLE BELOW CAN BE USED TO DETERMINE THE FRAME SIZE IF THE SPECIFIC MODEL/TYPE CODE WITH A CIRCUIT BREAKER, CONTACTOR OR DISCONNECT + CONTACTOR IS KNOWN.

KW RATED DRIVES				
KW HIGH OVERLOAD	200	250	315	315
KW NORMAL OVERLOAD	250	315	355	400
400V	D8H	D8H		
500V	D8H	D8H	D8H	
525V	D8H	D8H		
690V	D8H	D8H		D8H

HORSEPOWER RATED DRIVES			
HP HIGH OVERLOAD	300	350	350
HP NORMAL OVERLOAD	350	400	450
460V	D8H		D8H
575V	D8H	D8H	

PLATFORM	VOLTAGE	MODEL/TYPECODE	FRAME(IP21/IP54)
HVAC	T4	TR-200N200T4	D8H
		TR-200N250T4	
		TR-200N315T4	
	T7	TR-200N200T7	
		TR-200N250T7	
		TR-200N315T7	
		TR-200N400T7	