

4

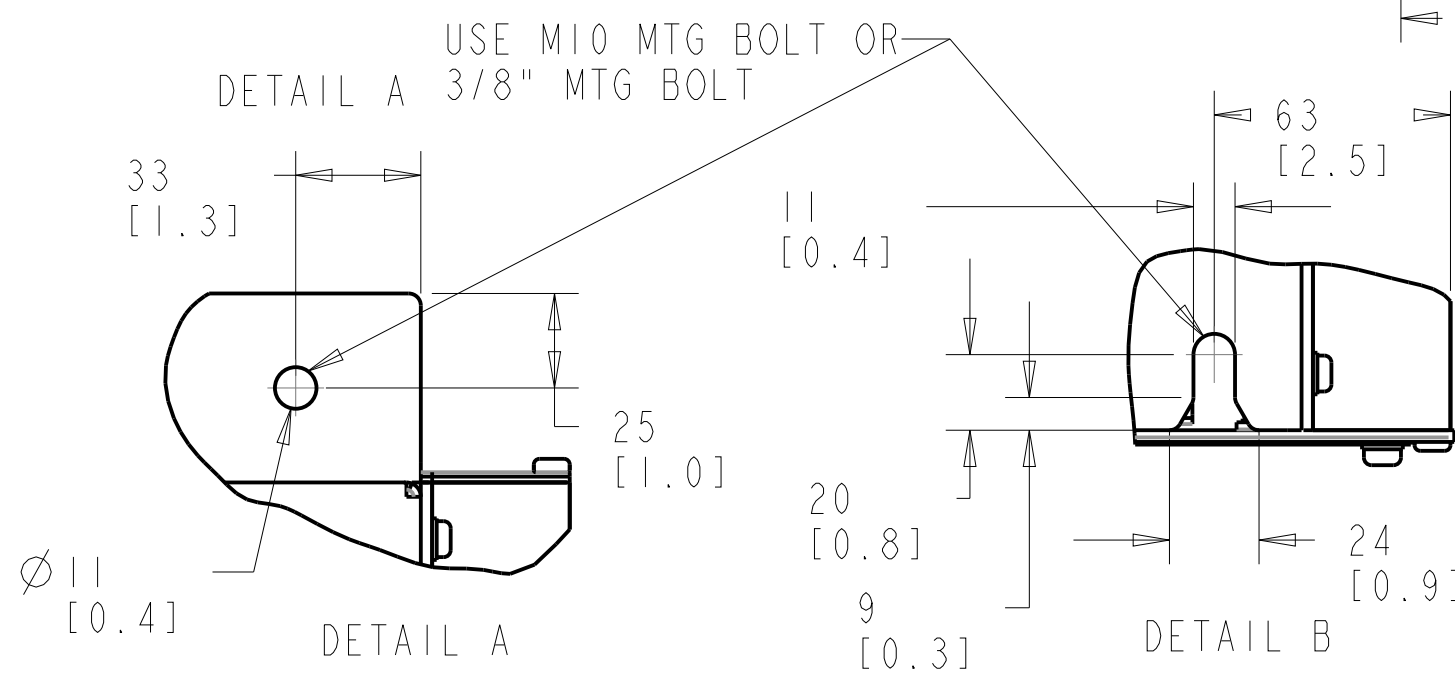
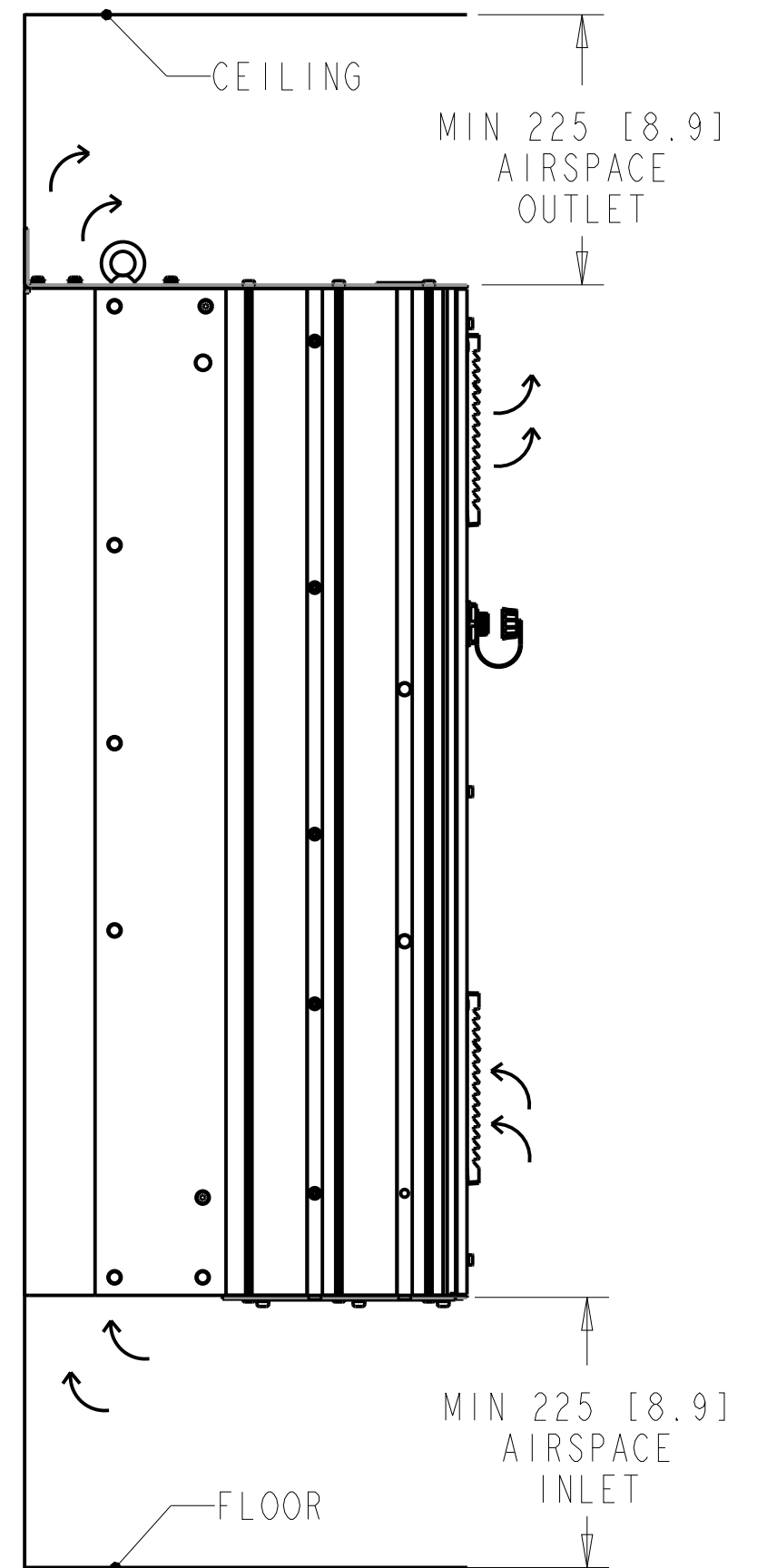
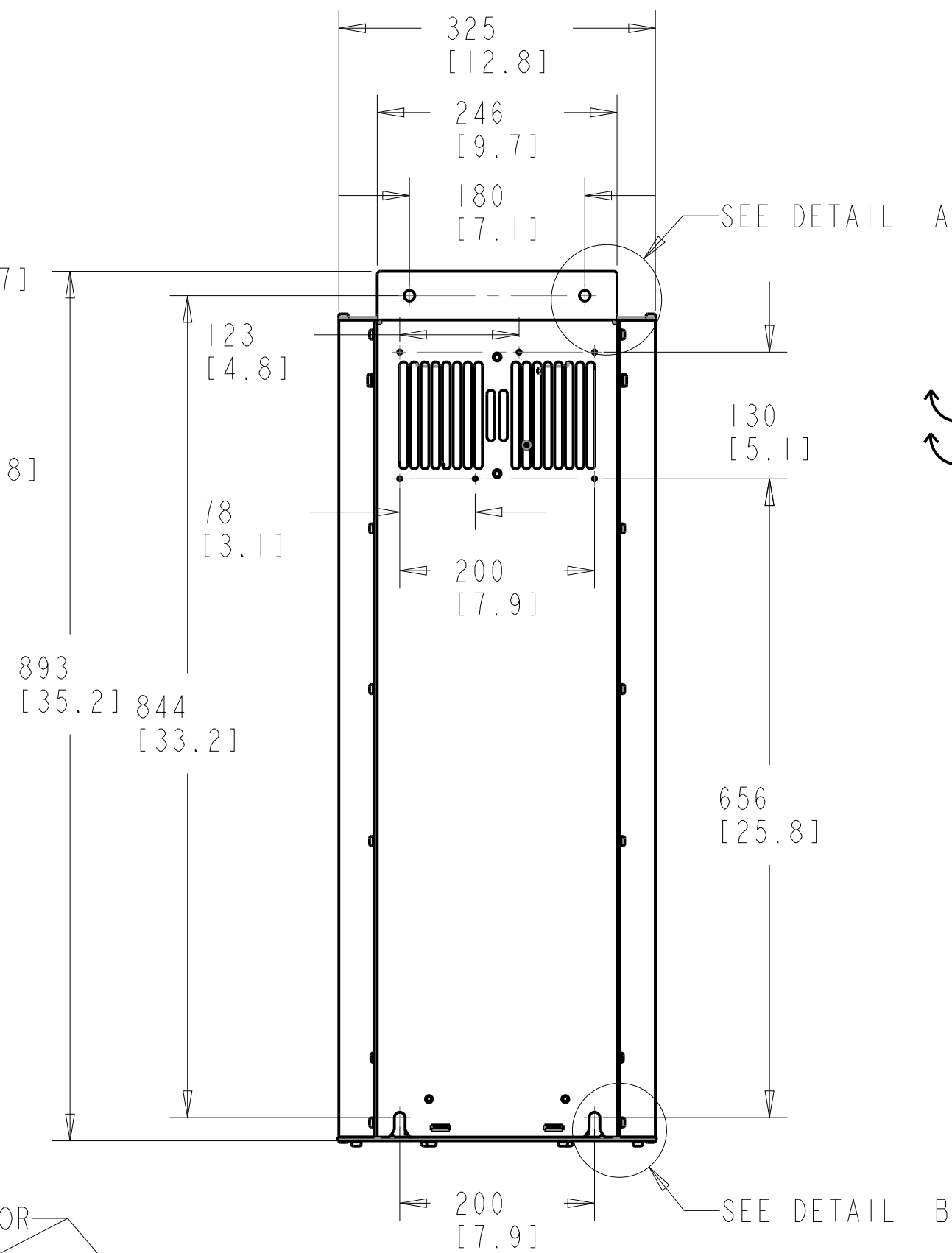
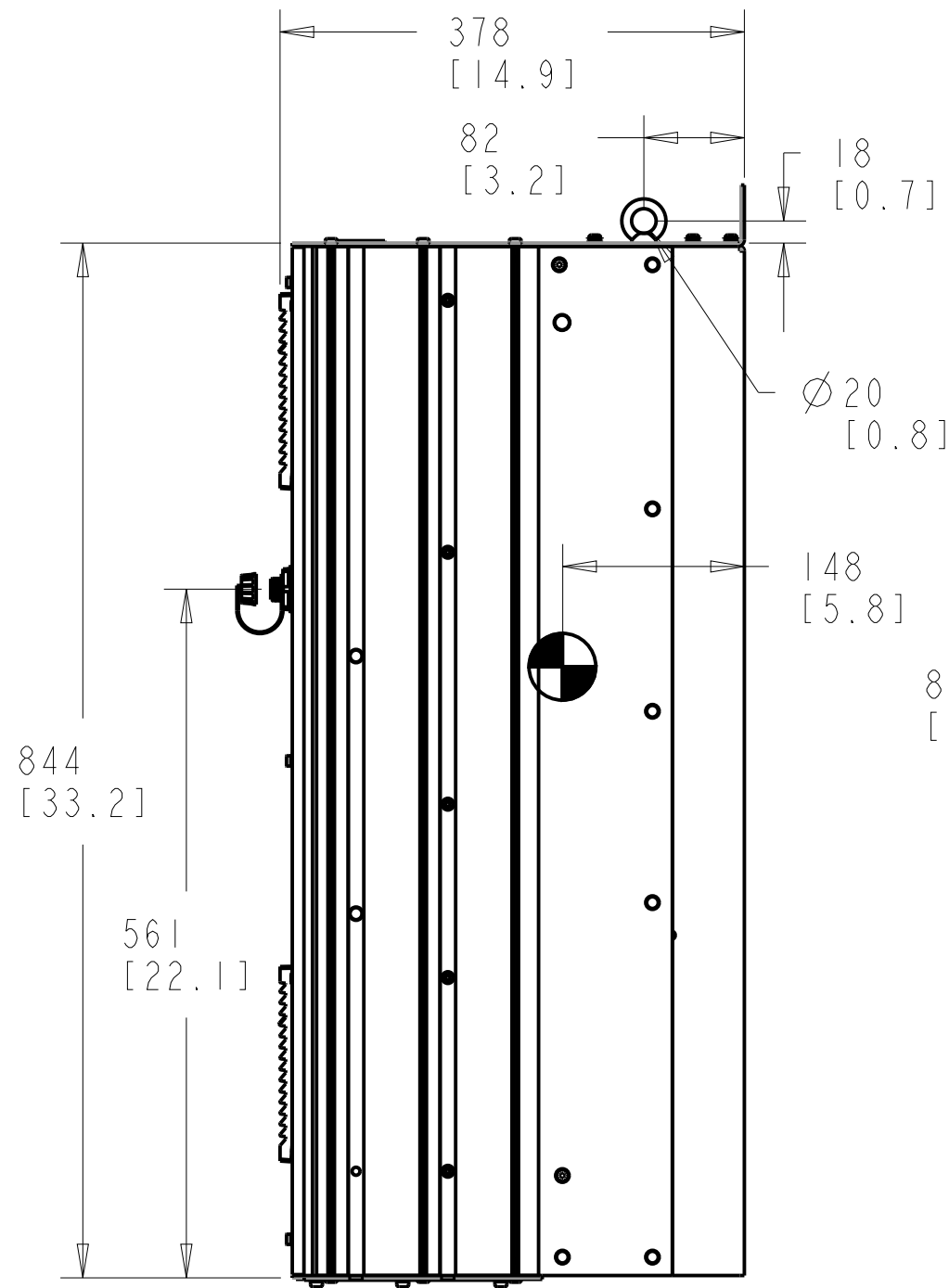
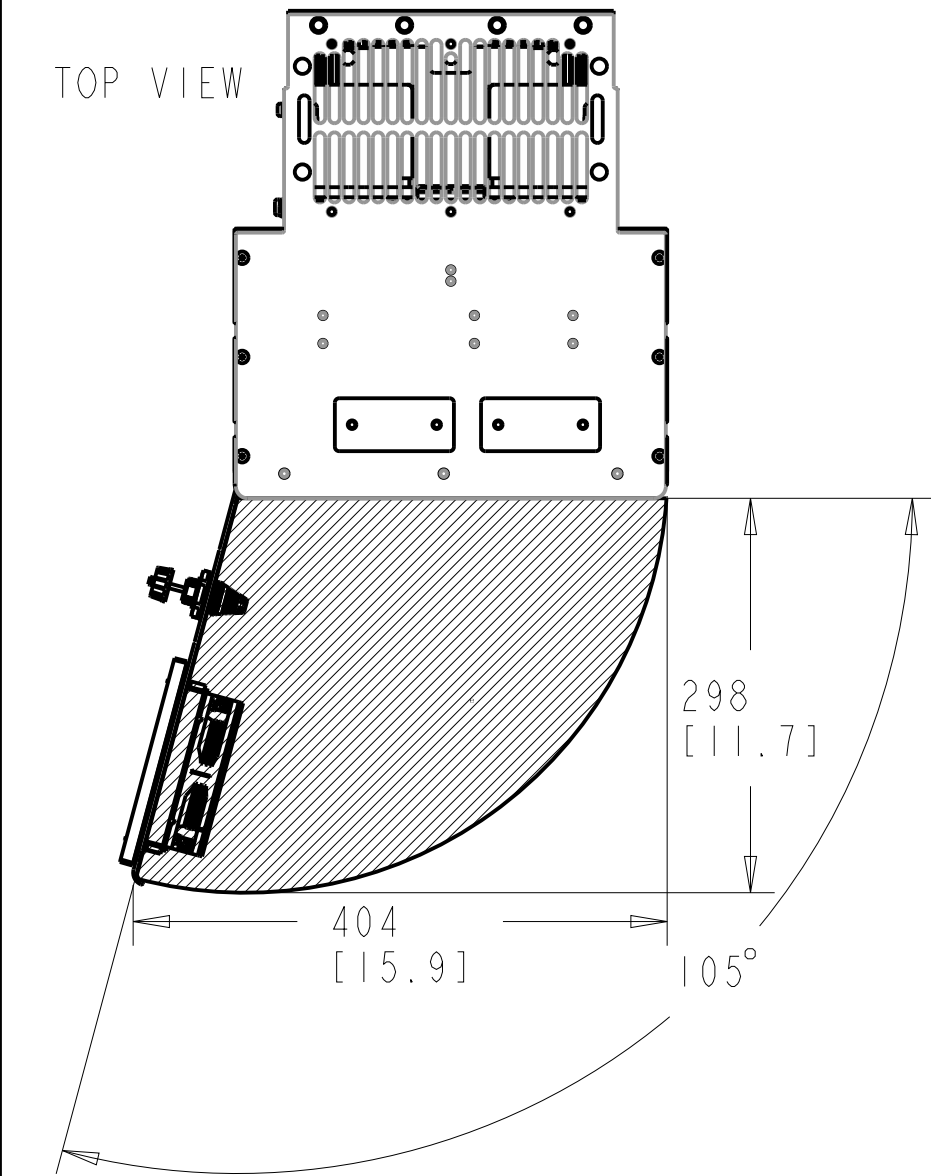
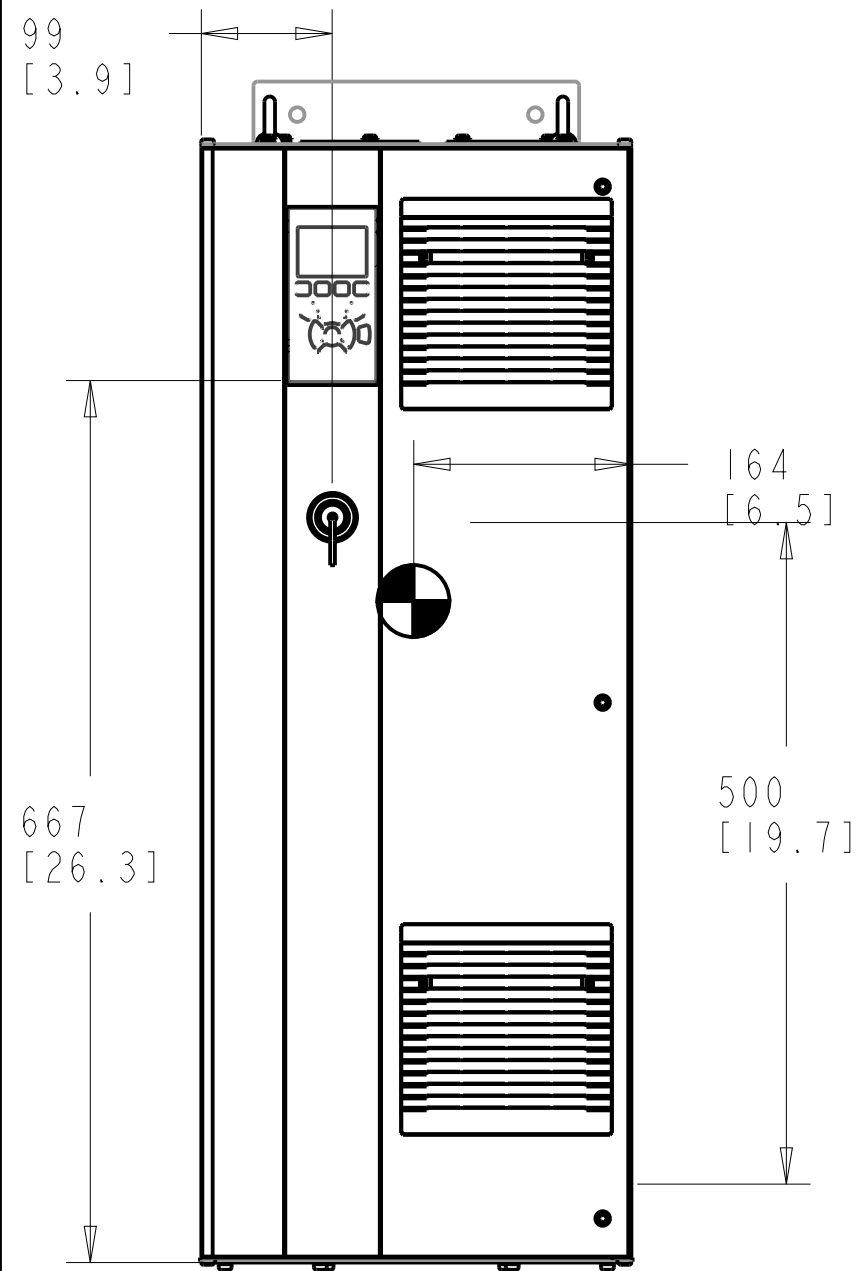
3

2

1

- NOTICE -

THIS DRAWING IS PROPRIETARY AND SHALL NOT BE COPIED OR ITS CONTENTS DISCLOSED TO OUTSIDE PARTIES WITHOUT THE WRITTEN CONSENT OF THE TRANE COMPANY



1. MAX AIRFLOW (BACKCHANNEL) - 7 M³ / MIN (250 CFM)
2. MAX AIRFLOW (CABINET) - 1.7 M³ / MIN (60 CFM)
3. MAX WEIGHT = 62 KG (135 LBS)
4. CENTER OF GRAVITY:
APPROXIMATE LOCATION ONLY, LOCATION MAY VARY BASED ON POWER RATING AND OPTIONS ORDERED.

UNLESS OTHERWISE SPECIFIED INTERPRET DIM AND TOL PER ASME Y14.5M-1994		PROPERTIES		<p style="text-align: center;">THE TRANE COMPANY</p> <p style="text-align: center;">INSTALLATION DWG, DIH, TRANE</p>				
.X±0.4 .XX±0.20 <±0.5		MATERIAL					TITLE	
DIM. ARE IN MILLIMETERS WEIGHTS ARE IN KILOGRAMS		FINISH					APPROVALS	INITIALS
THIRD ANGLE PROJECTION		THICKNESS					DATE	
		EST. WEIGHT	62	DRAWN	KD			
		CHECKED		DATE	10/29/13			
		ENGR		SCALE	0.250			
		SIZE	C	MODEL	P454-DI-PRODUCTION			
		DRAWING NO.	177R0563	REV	001			
		SHEET	1 OF 3					

4

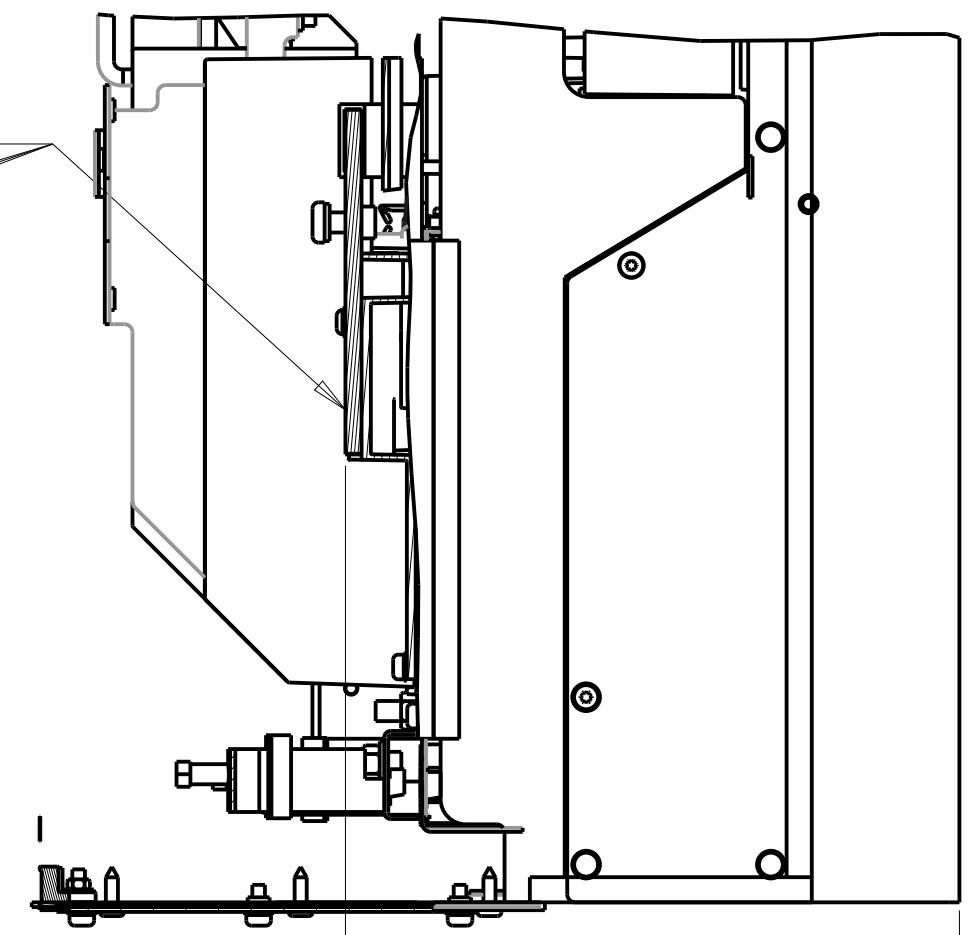
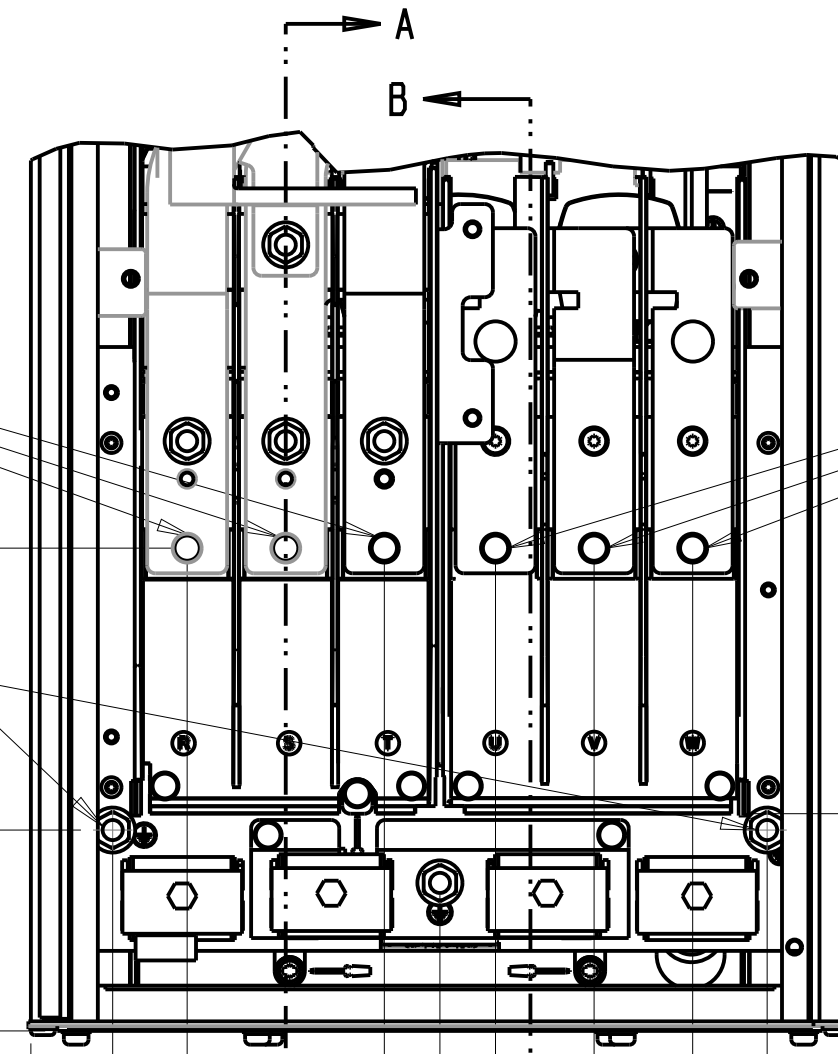
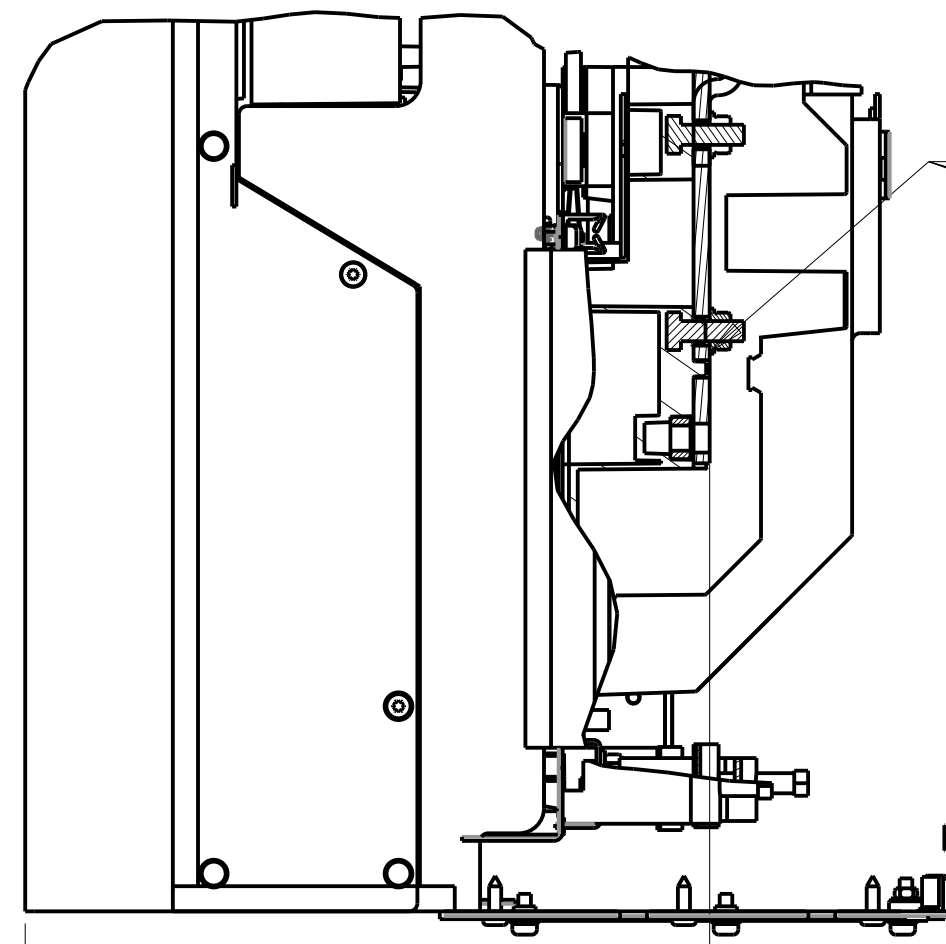
3

2

1

SECTION A-A
MAINS TERMINALS

SECTION B-B
MOTOR TERMINALS



MAINS TERMINAL

MOTOR TERMINAL

192
[7.6]

3X M8X20 STUD
WITH NUT

GROUND 80
[3.1]

86
[3.4]

0
[0.0]

272
[10.7]

0
[0.0]

33
[1.3]

62
[2.4]

101
[4.0]

140
[5.5]

163
[6.4]

185
[7.3]

224
[8.8]

263
[10.4]

293
[11.5]

(R)

(S)

(T)

(U)

(V)

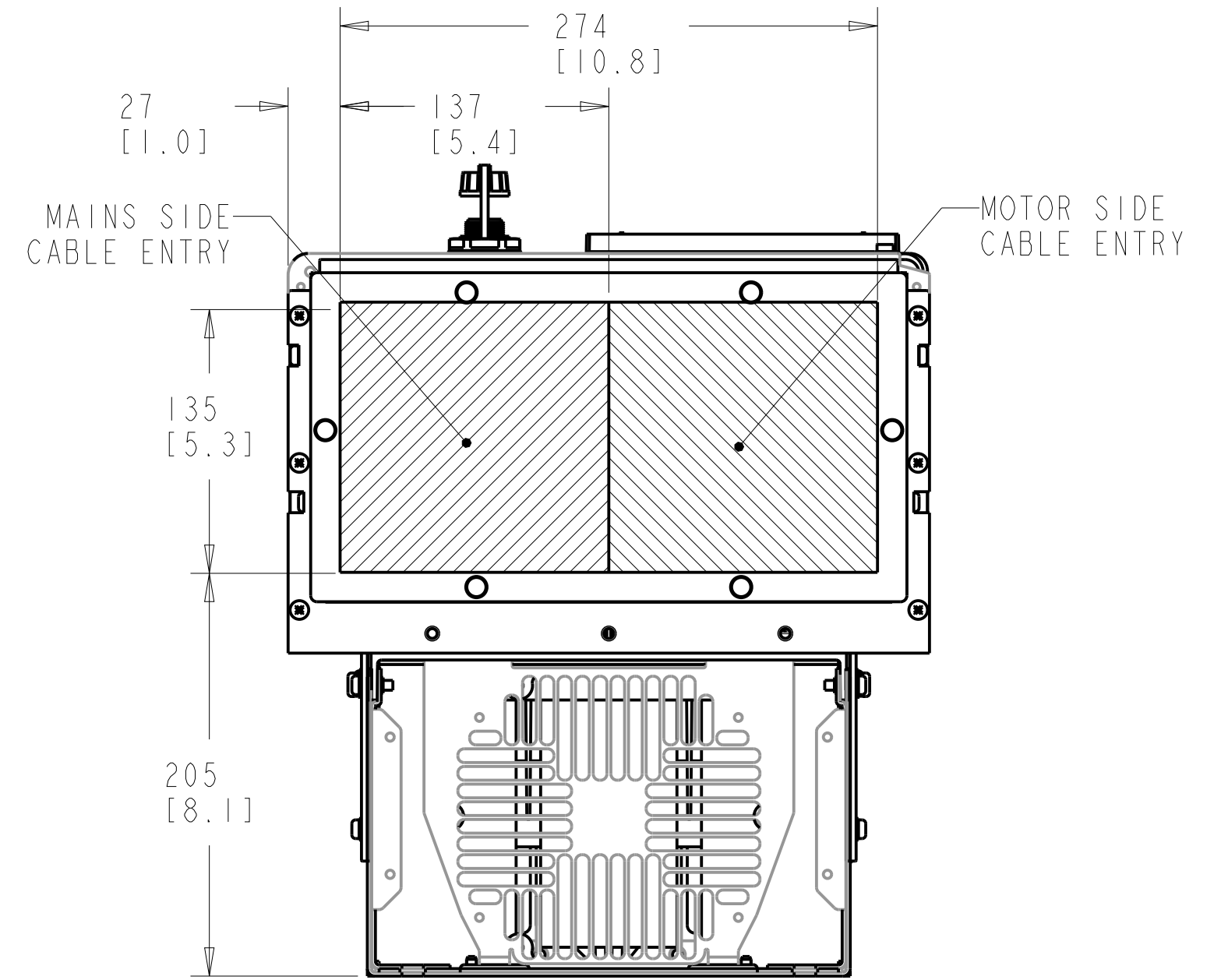
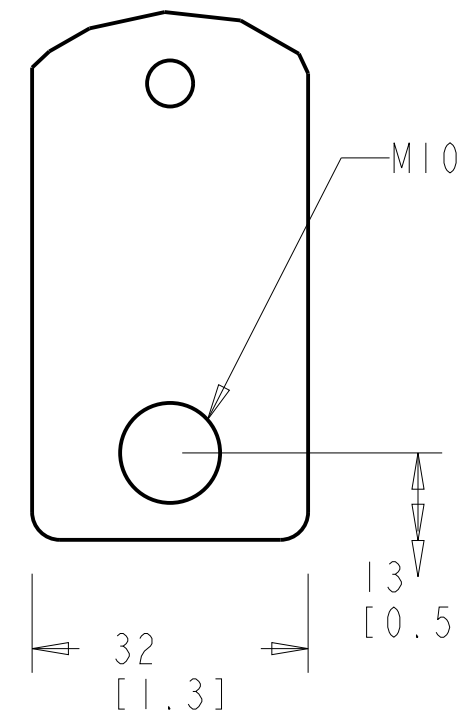
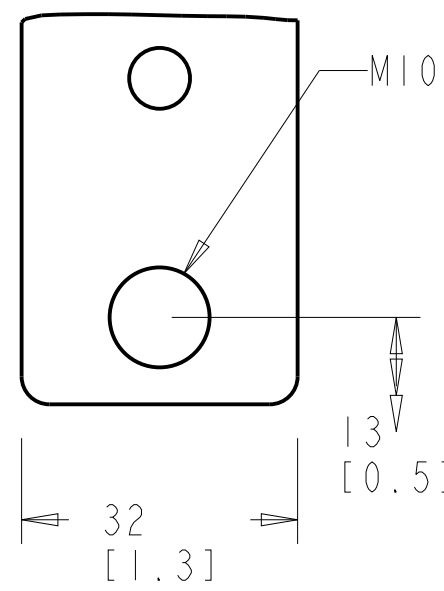
(W)

244
[9.6]

0
[0.0]

MAINS TERMINAL

MOTOR TERMINAL



BOTTOM VIEW

NOTES:

1. PLACE CABLES THROUGH MARKED AREAS
2. 95 MM² (3/0) MAX WIRE SIZE

TITLE INSTALLATION DWG, DIH, TRANE			
SIZE C	MODEL	REV 001	SHEET 2 OF 3
SCALE 0.333	DRAWING NO. 177R0563		

THE TABLES BELOW MAY BE USED TO CONFIRM THE CORRECT FRAME SIZE AND DRAWING FOR A SPECIFIC DRIVE RATING (POWER AND VOLTAGE). THIS DRAWING IS FOR DIH FRAMES, THE TABLES BELOW IDENTIFY WHICH DRIVES ARE REPRESENTED BY THIS DRAWING.

THE TABLE BELOW CAN BE USED TO DETERMINE THE FRAME SIZE IF THE SPECIFIC MODEL/TYPECODE IS KNOWN.

KW RATED DRIVES					
KW HIGH OVERLOAD	75	90	110	132	160
KW NORMAL OVERLOAD	90	110	132	160	200
400V		DIH	DIH	DIH	
500V			DIH	DIH	DIH
525V	DIH	DIH	DIH		
690V	DIH	DIH	DIH	DIH	

HORSEPOWER RATED DRIVES				
HP HIGH OVERLOAD	100	125	150	200
HP NORMAL OVERLOAD	125	150	200	250
460V		DIH	DIH	DIH
575V	DIH	DIH	DIH	

PLATFORM	VOLTAGE	MODEL/TYPECODE	FRAME(IP21/IP54)
HVAC	T4	TR-200N110T4	DIH
		TR-200N132T4	
		TR-200N160T4	
	T7	TR-200N75KT7	
		TR-200N90KT7	
		TR-200N110T7	
		TR-200N132T7	
		TR-200N160T7	

TITLE			
INSTALLATION DWG, DIH, TRANE			
SIZE	MODEL	REV	001
C			
SCALE	DRAWING NO.	SHEET	3 OF 3
0.175	177R0563		