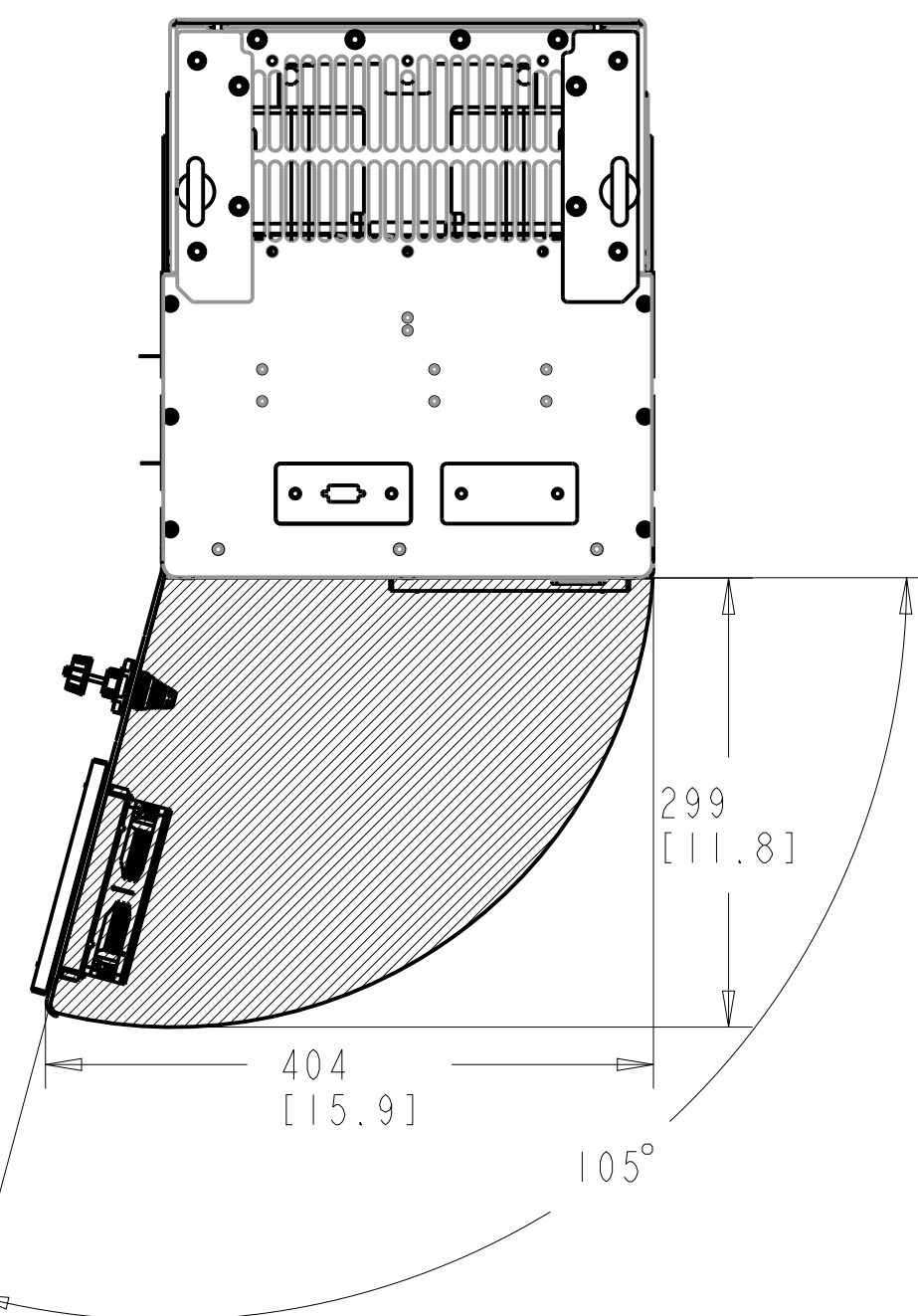
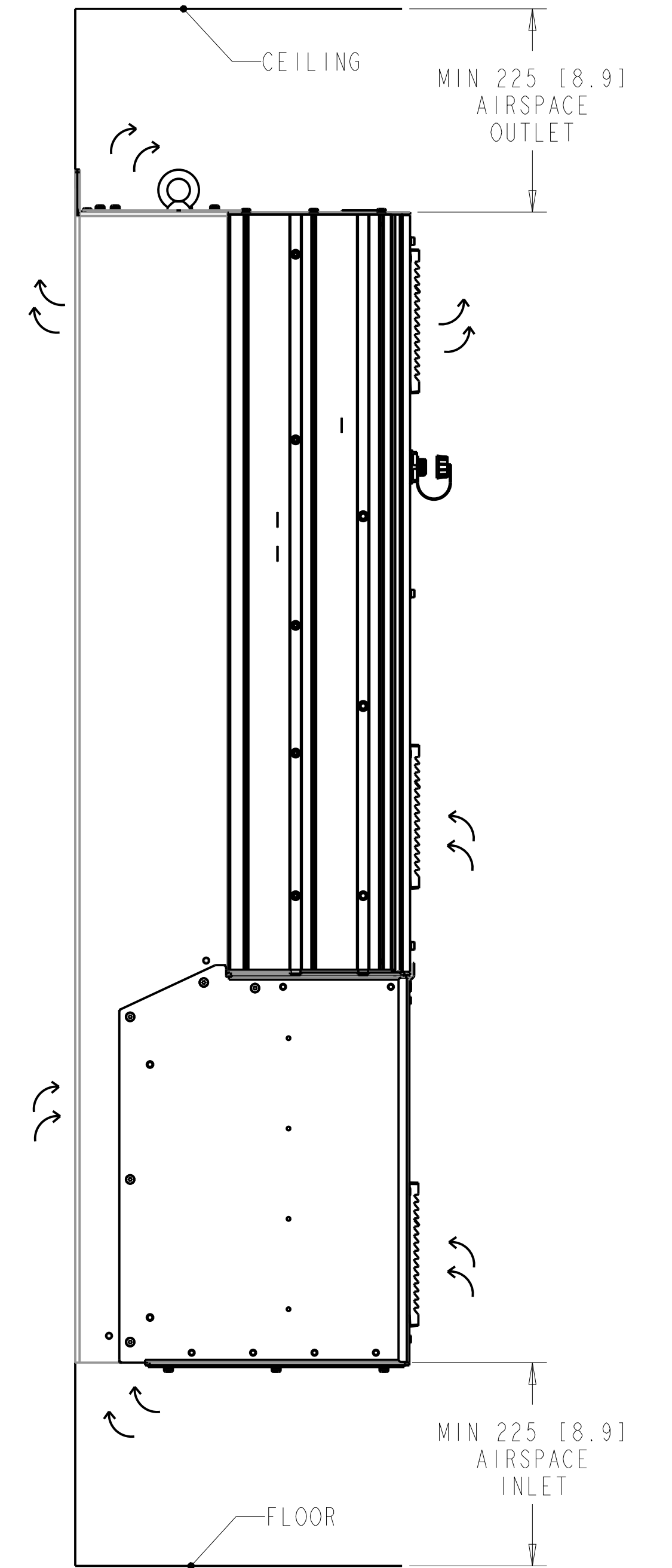
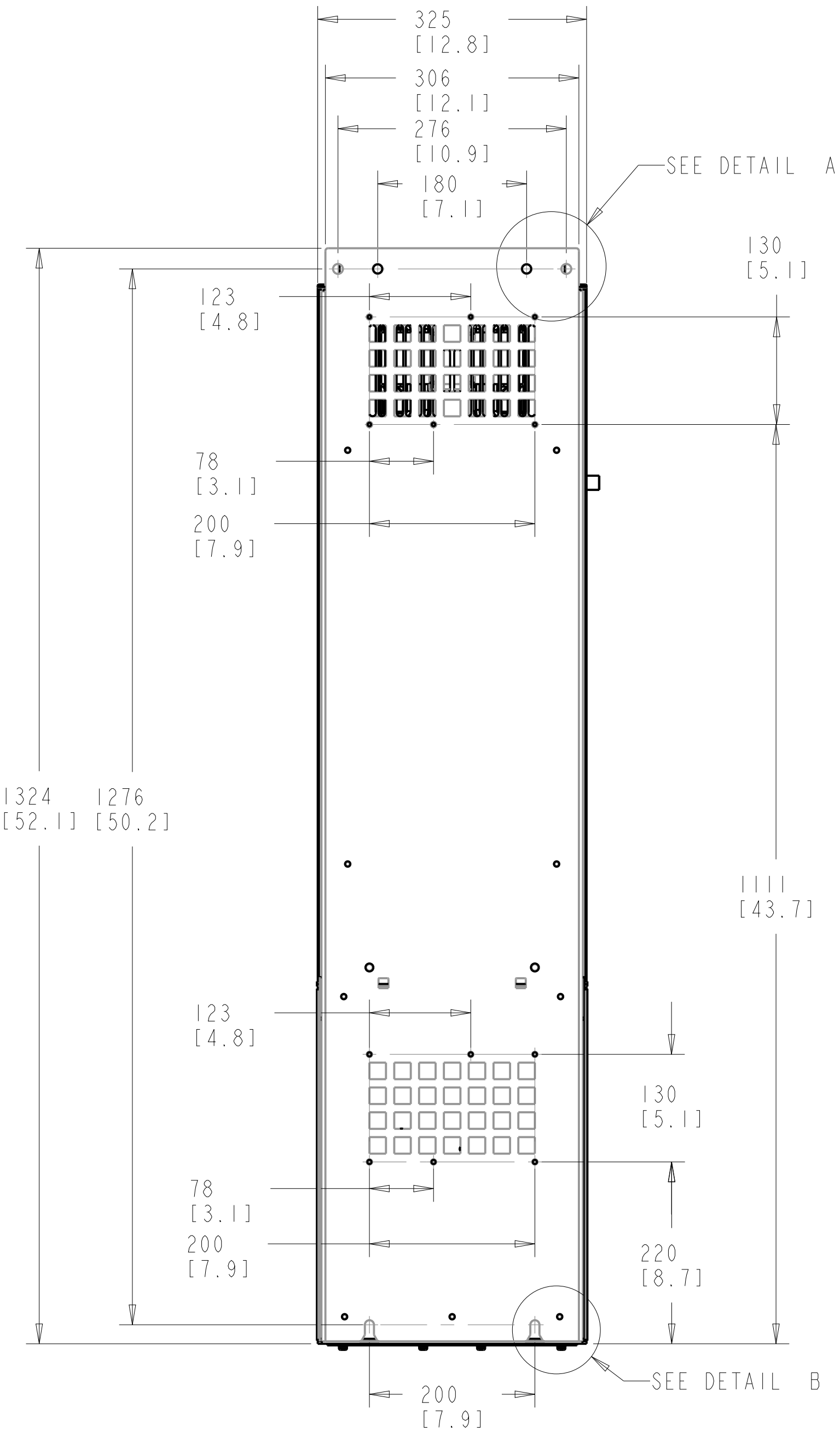
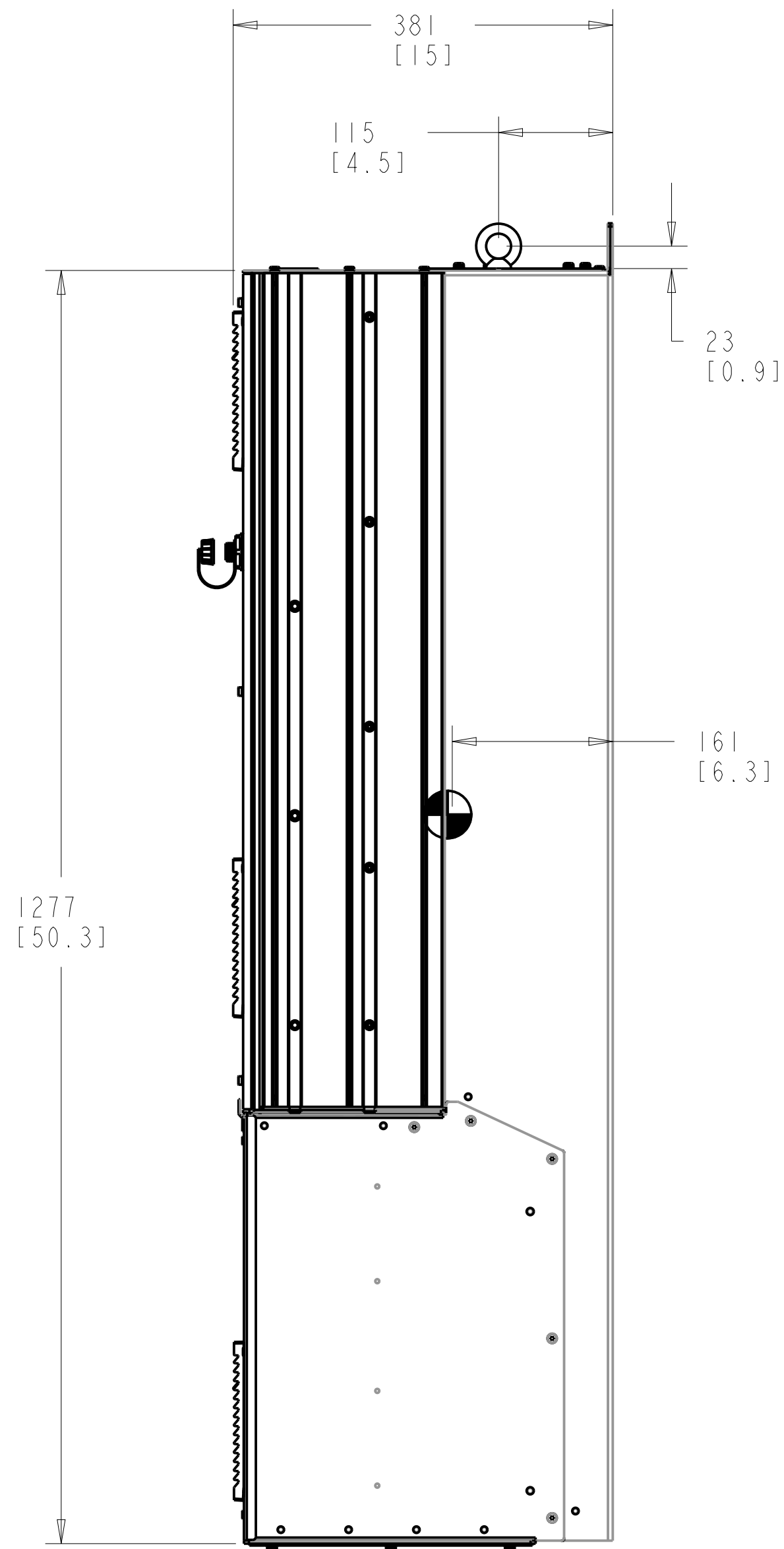
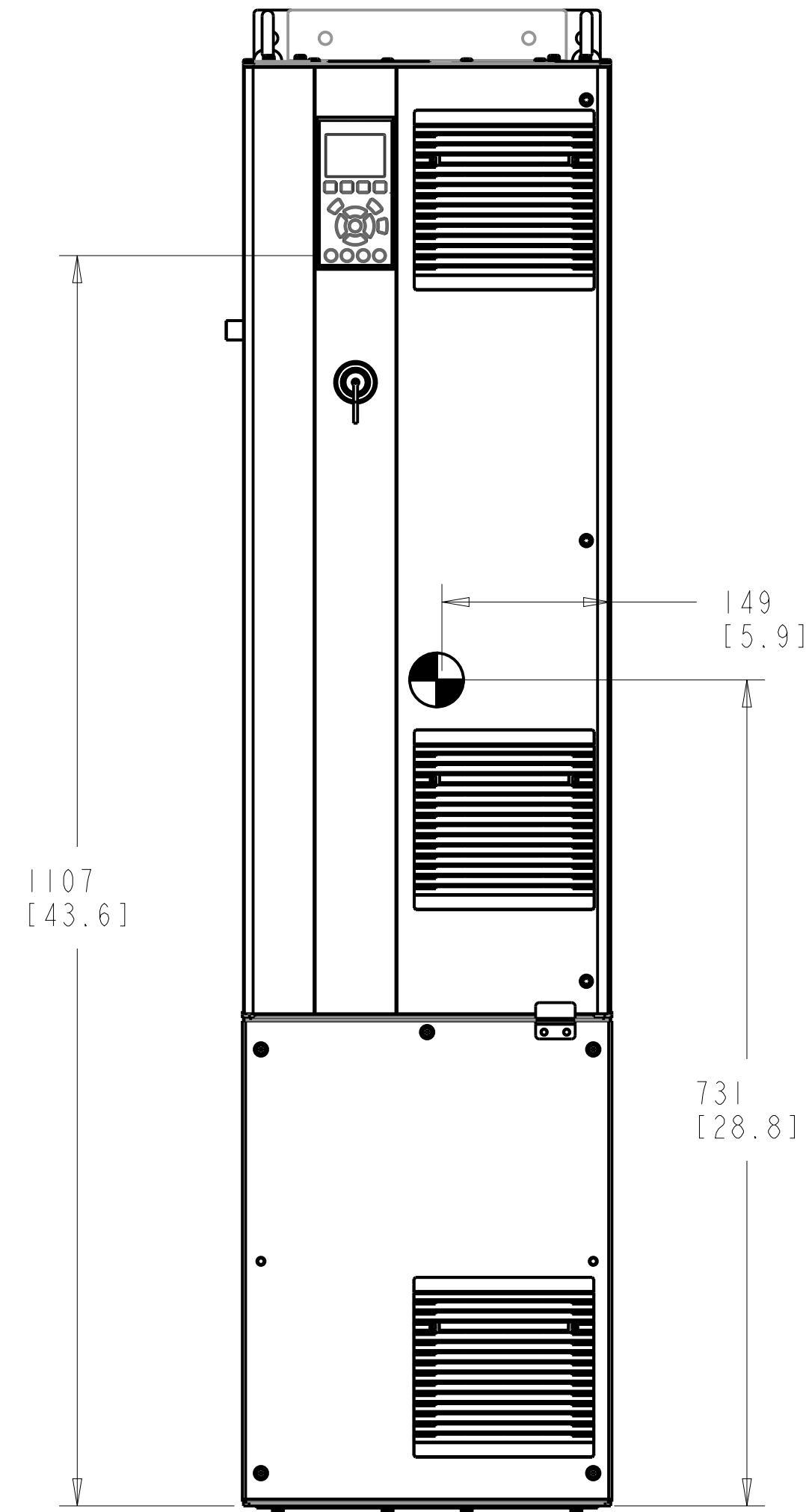
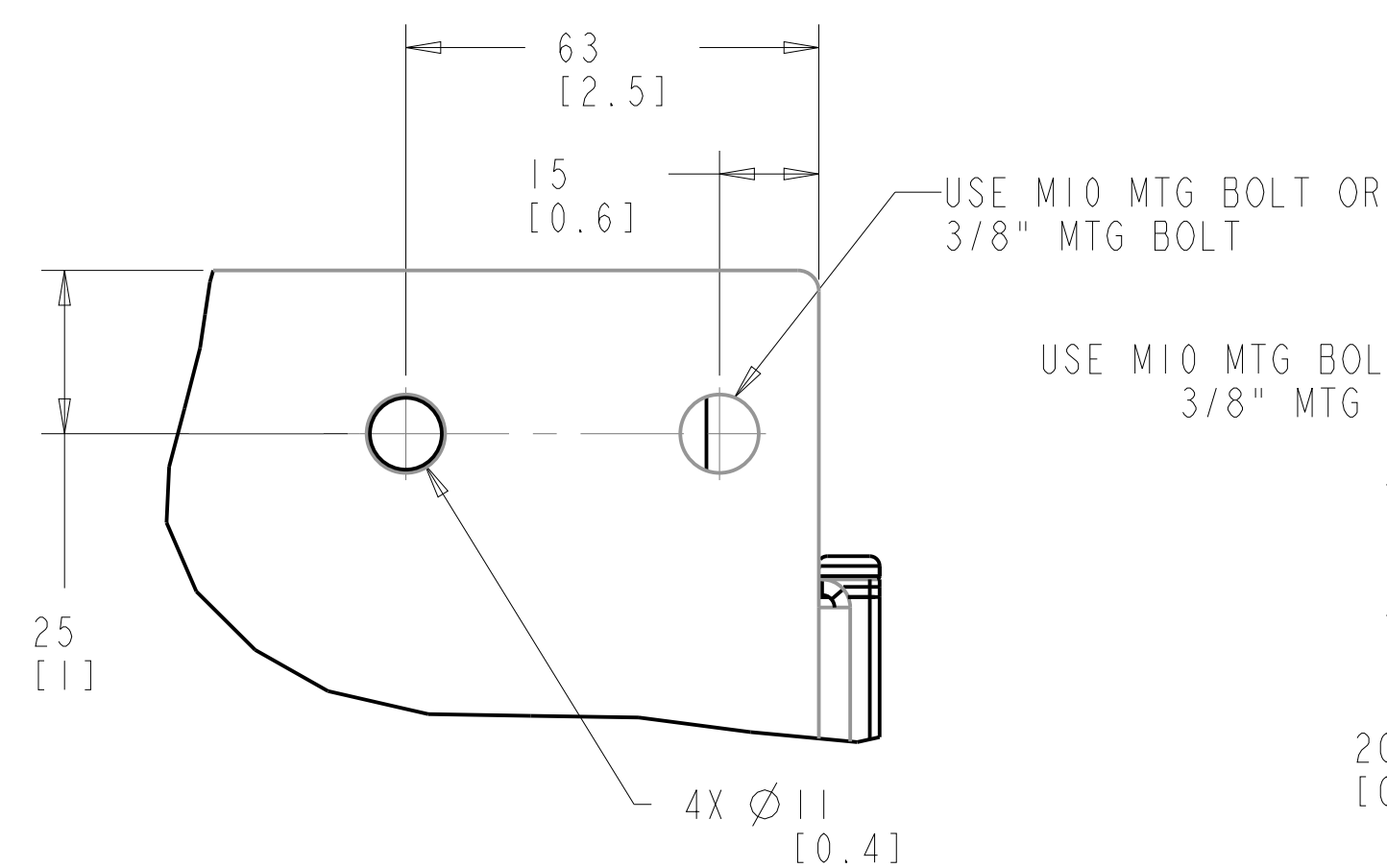


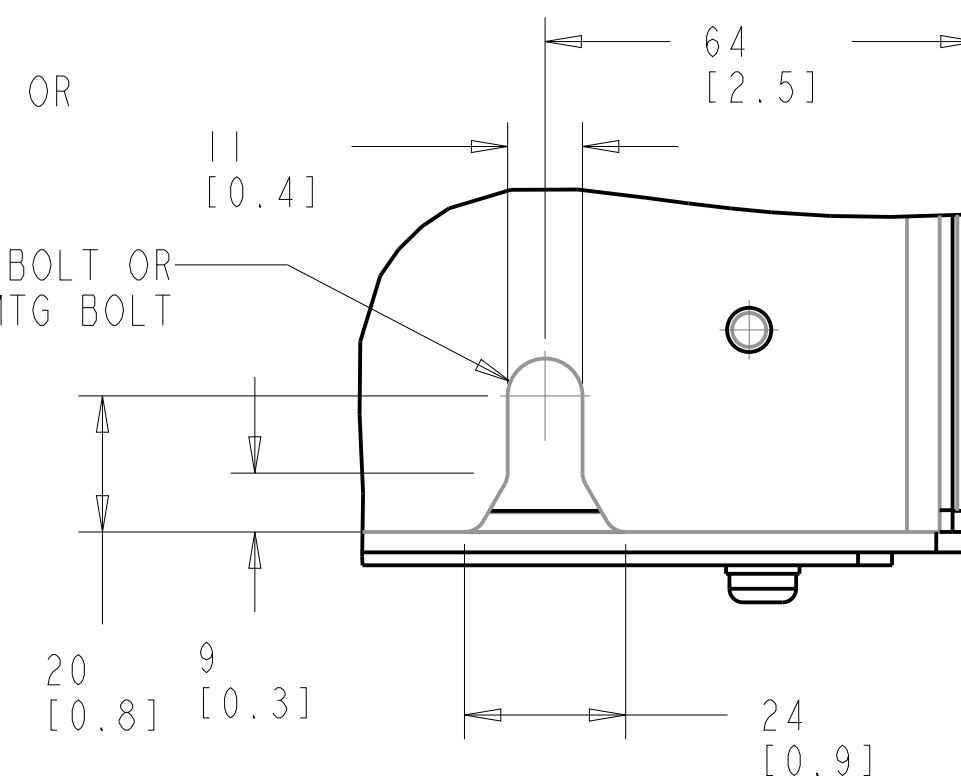
- NOTICE -
THIS DRAWING IS PROPRIETARY AND SHALL NOT BE COPIED OR ITS CONTENTS DISCLOSED TO OUTSIDE PARTIES WITHOUT THE WRITTEN CONSENT OF THE TRANE COMPANY



DETAIL A
TOP MOUNTING HOLES



DETAIL B
BOTTOM MOUNTING HOLES



NOTE:
REFER SHEET 2 & 3 FOR EXTENDED OPTION CABINET BUSBAR CONNECTION POINT.
REFER SHEET 4 FOR WIRING KIT OPTION BUSBAR CONNECTION POINT.

1. MAX AIRFLOW (BACKCHANNEL) - 7 M³ / MIN (250 CFM)
2. MAX AIRFLOW (CABINET) - 1.7 M³ / MIN (60 CFM)
3. MAX WEIGHT = 99 KG (219 LBS)
4. CENTER OF GRAVITY:
APPROXIMATE LOCATION ONLY, LOCATION MAY VARY BASED ON POWER RATING AND OPTIONS ORDERED.

UNLESS OTHERWISE SPECIFIED INTERPRET DIM. AND TOL. PER ASME Y14.5M-1994		PROPERTIES			TITLE		
.X±0.4	.XX±0.20	±0.5	MATERIAL		THE TRANE COMPANY		
DIM. ARE IN MILLIMETERS WEIGHTS ARE IN KILOGRAMS			FINISH				
THIRD ANGLE PROJECTION			THICKNESS		INSTALLATION DWG, DSH, TRANE		
DRAWN			EST. WEIGHT	99.00			
APPROVALS			INITIALS	DATE	SIZE D MODEL P454-1038 REV 001 SCALE 0.200 DRAWING NO. 177R0567 SHEET 1 OF 5		
CHECKED			KD	11/01/13			
ENGR							

8

7

6

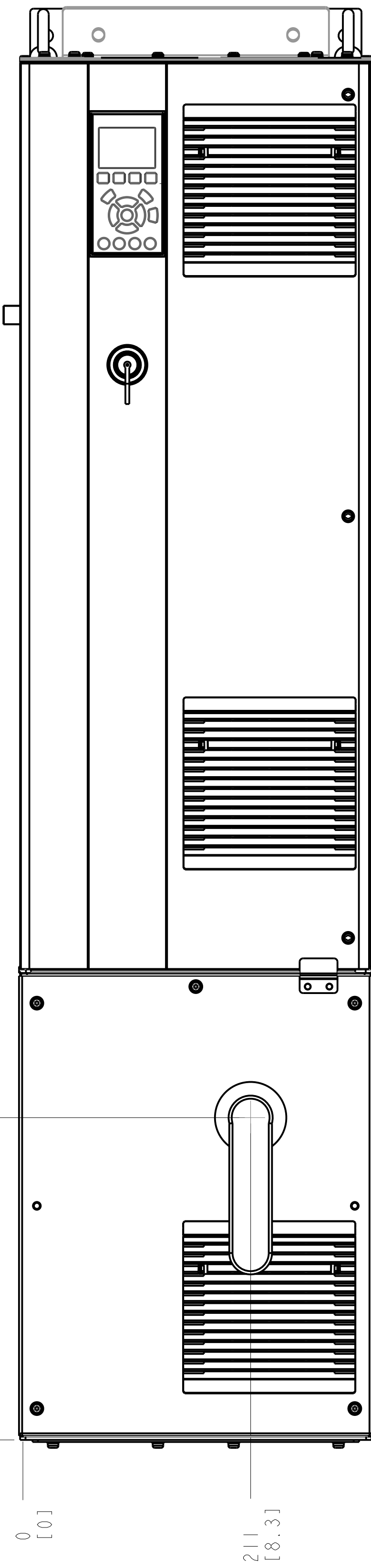
5

4

3

2

1



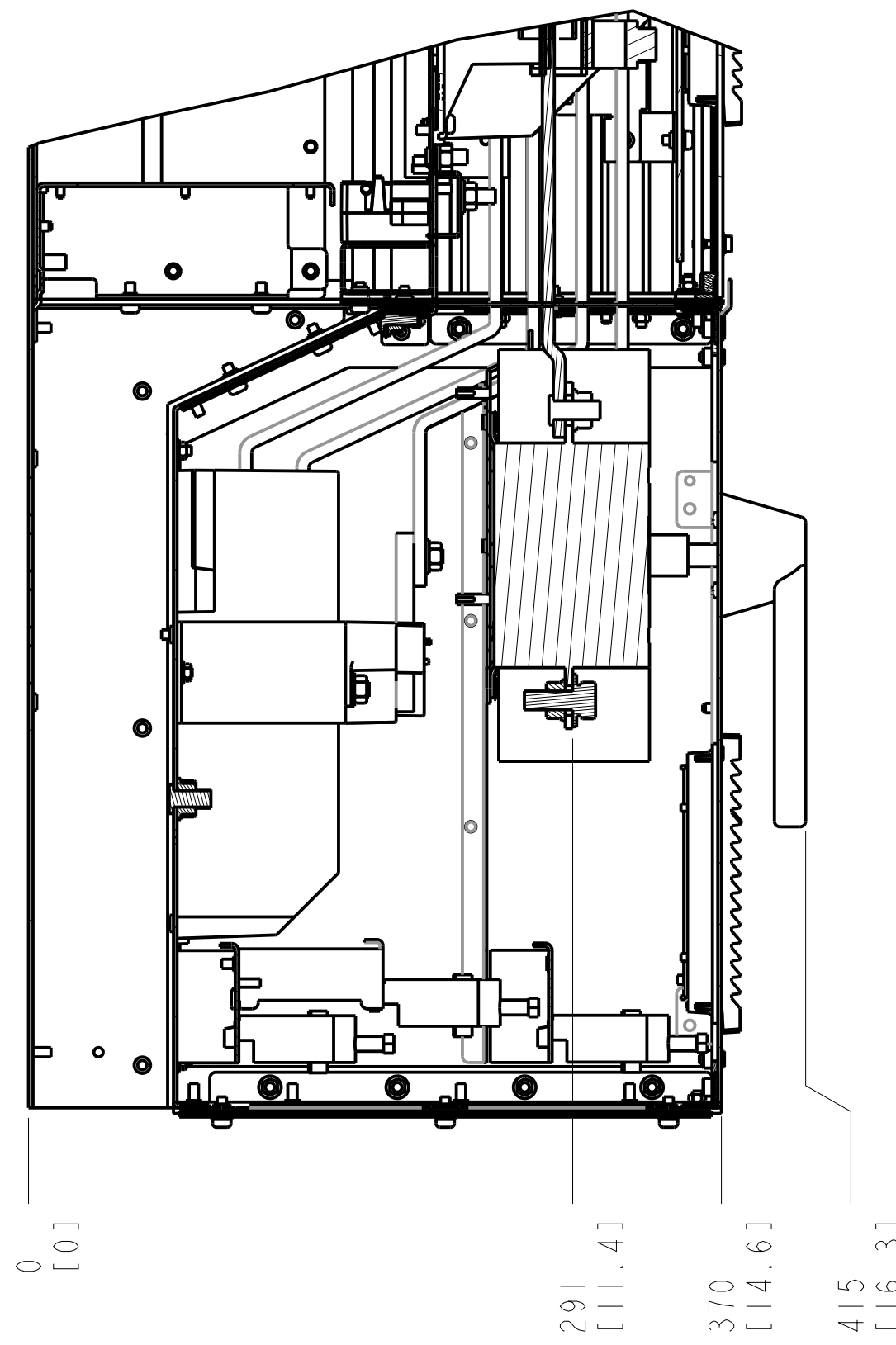
298 [11.7]

0 [0]

0 [0]

211 [8.3]

SECTION A-A
MAINS TERMINALS



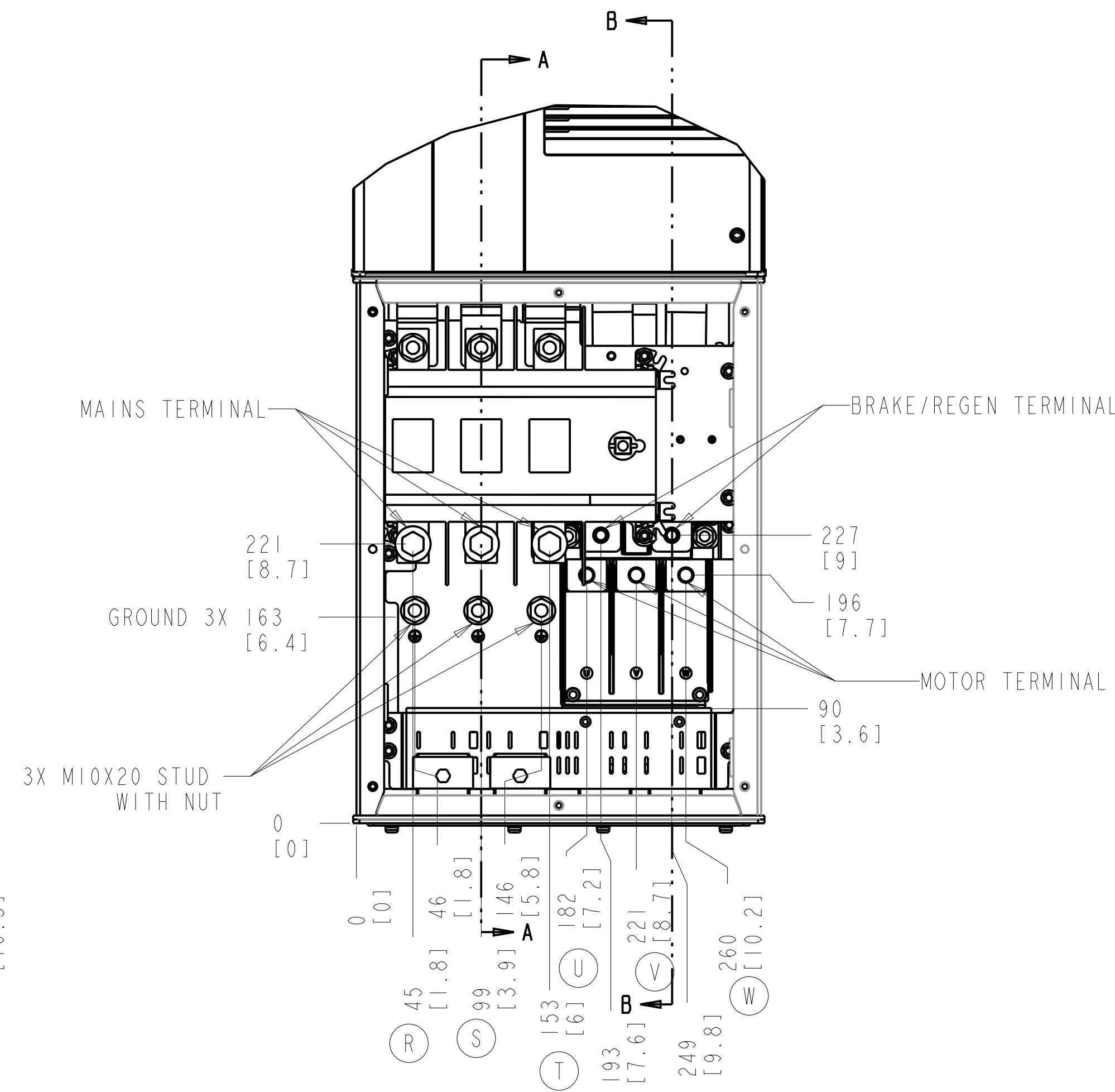
0 [0]

291 [11.4]

370 [14.6]

415 [16.3]

DISCONNECT



MAINS TERMINAL

221 [8.7]

GROUND 3X 163 [6.4]

3X M10X20 STUD WITH NUT

0 [0]

BRAKE/REGEN TERMINAL

227 [9]

196 [7.7]

MOTOR TERMINAL

90 [3.6]

0 [0]

45 [1.8]

46 [1.8]

99 [3.9]

146 [5.8]

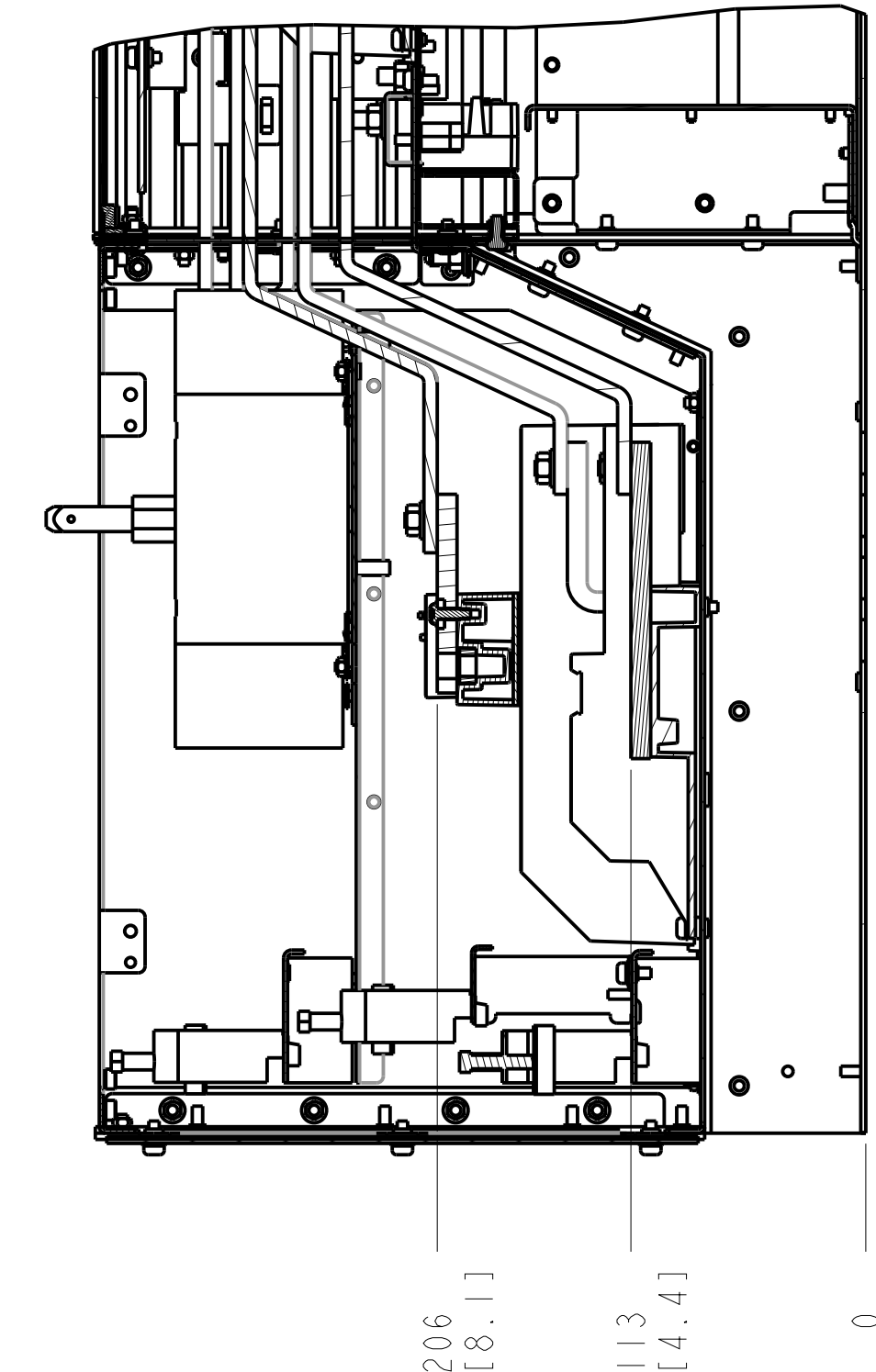
182 [7.2]

221 [8.7]

249 [9.8]

260 [10.2]

SECTION B-B
MOTOR TERMINALS
BRAKE / REGEN TERMINALS

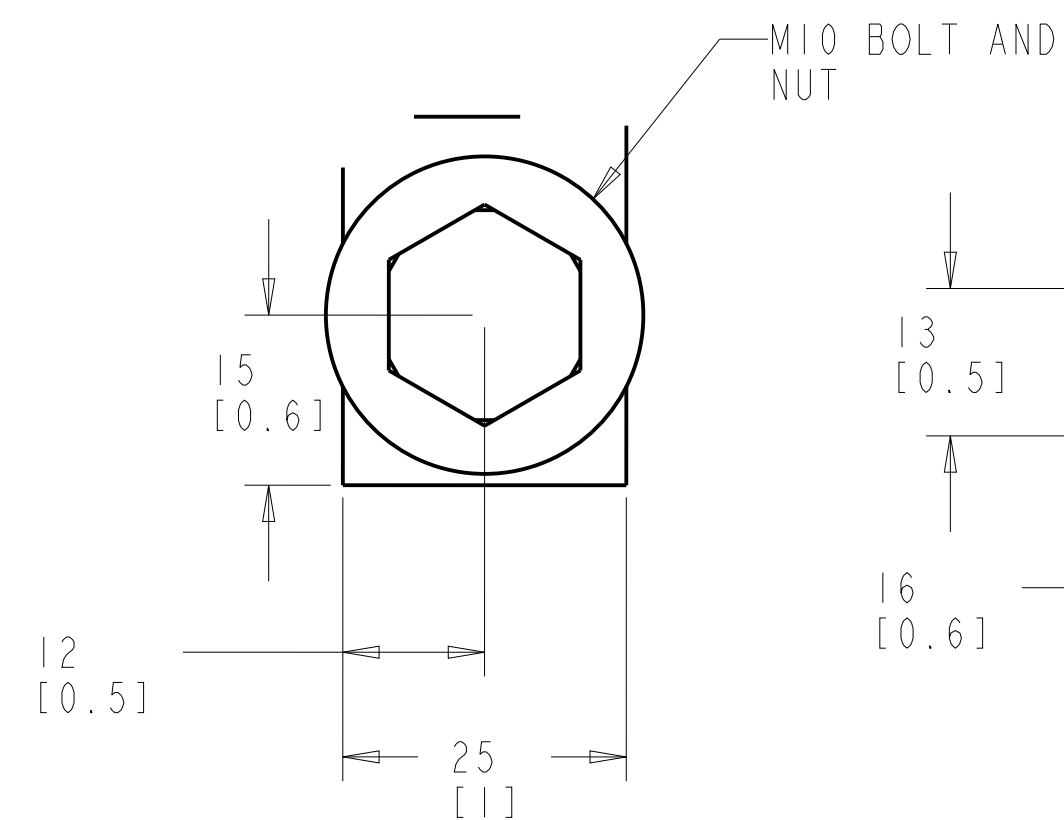


206 [8.1]

113 [4.4]

0 [0]

MAINS TERMINAL

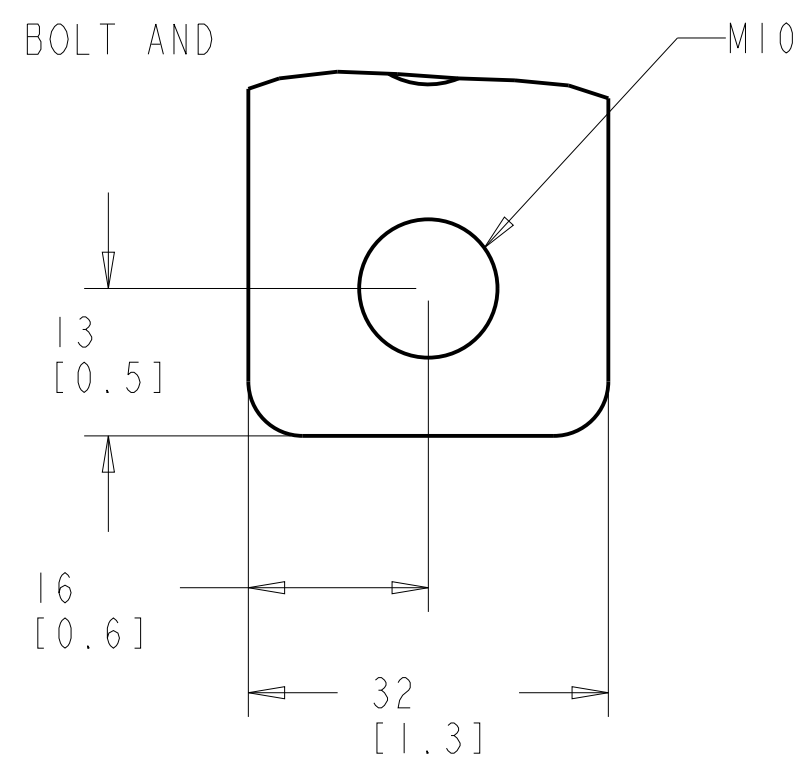


12 [0.5]

15 [0.6]

25 [1]

BRAKE/REGEN TERMINAL

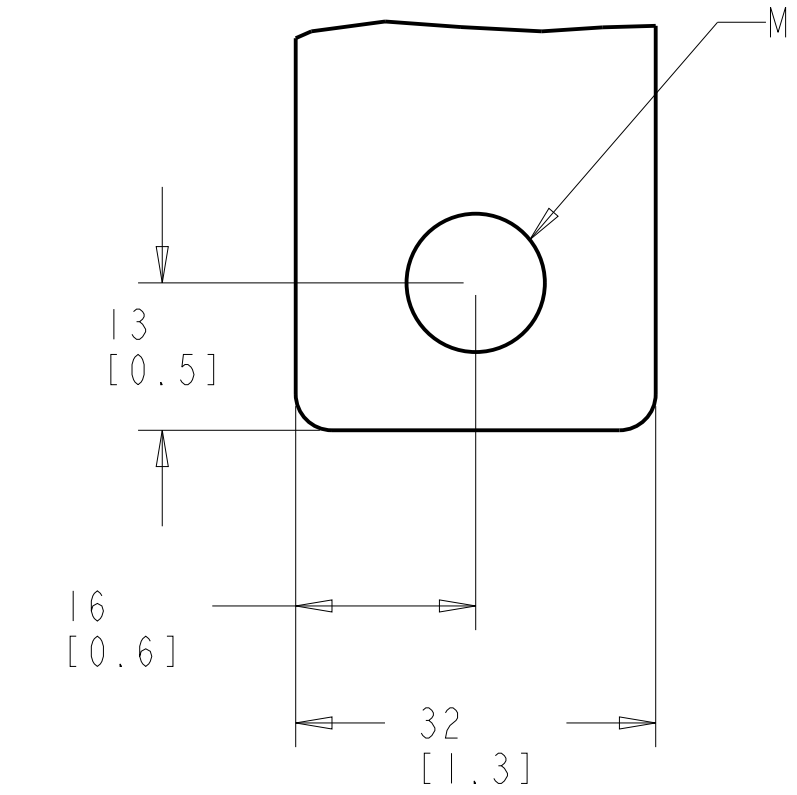


13 [0.5]

16 [0.6]

32 [1.3]

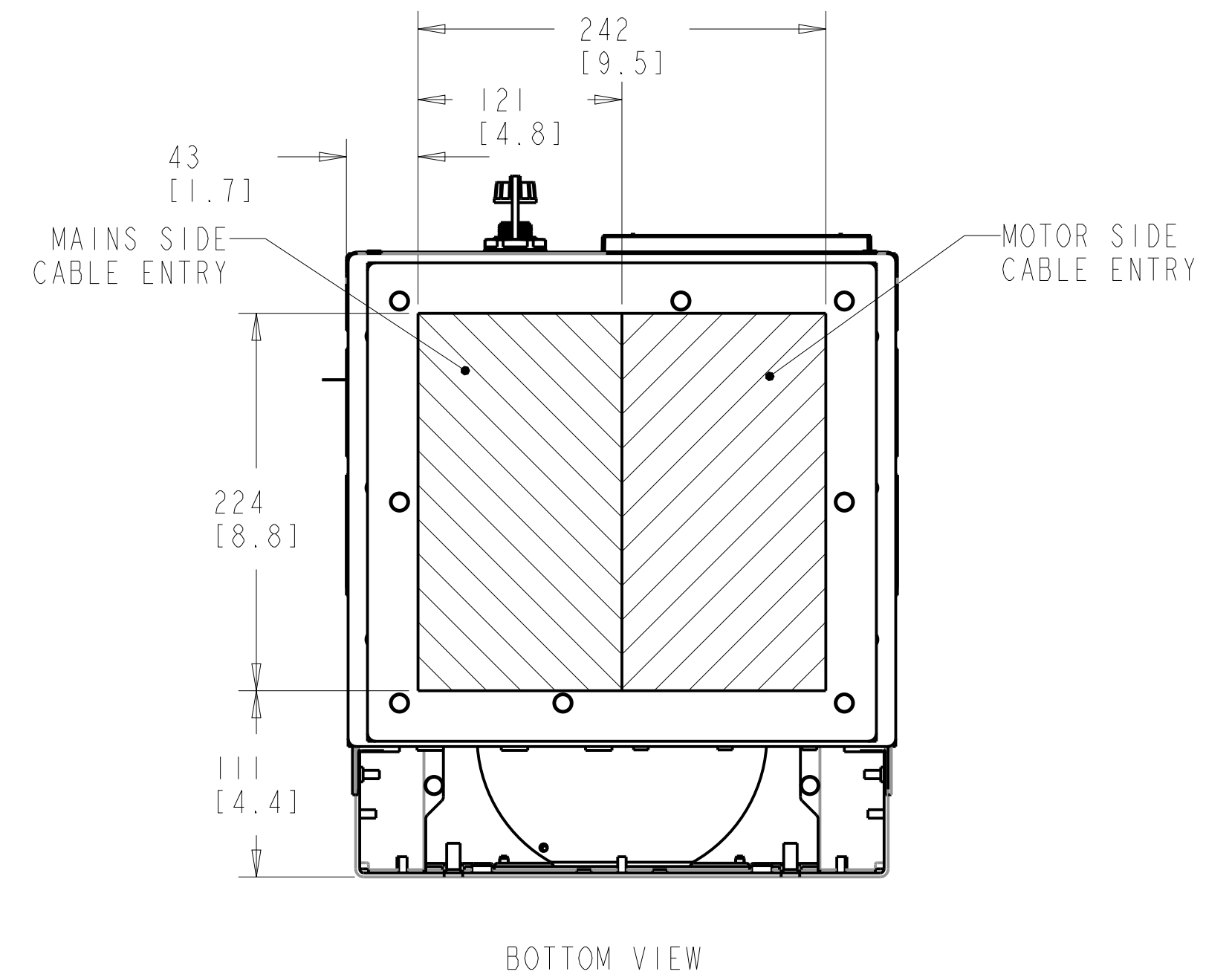
MOTOR TERMINAL



13 [0.5]

16 [0.6]

32 [1.3]



43 [1.7]

MAINS SIDE CABLE ENTRY

224 [8.8]

111 [4.4]

BOTTOM VIEW

242 [9.5]

121 [4.8]

MOTOR SIDE CABLE ENTRY

NOTES:

- 1. PLACE CABLES THROUGH MARKED AREAS
- 2. 95MM² (310 MCM) MAX WIRE SIZE

TITLE			
INSTALLATION DWG, DSH, TRANE			
SIZE	MODEL	REV	
D	P454-1038	001	
SCALE	DRAWING NO.	SHEET	
0.300	177R0567	2 OF 5	

8

7

6

5

4

3

2

1

8

7

6

5

4

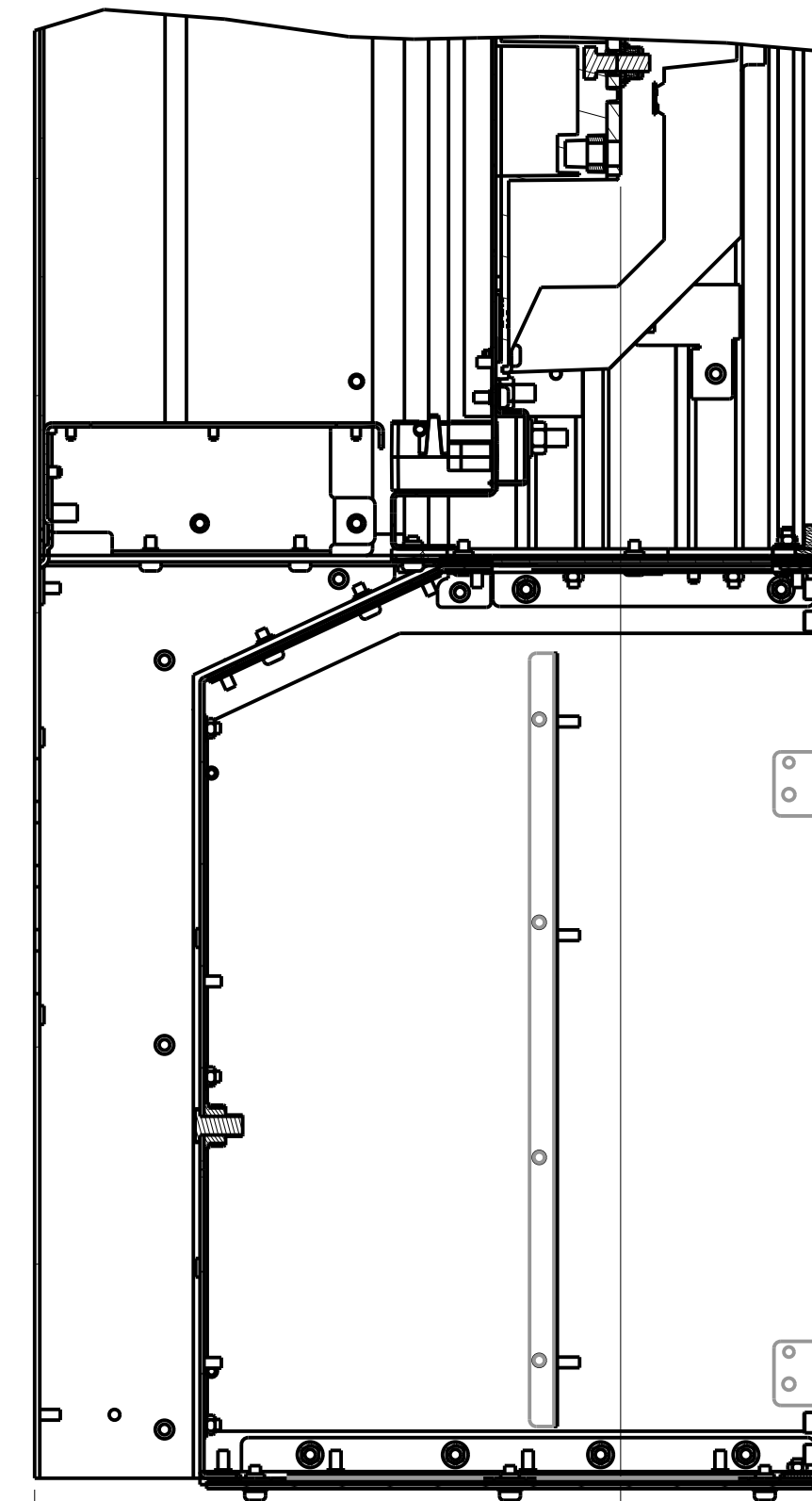
3

2

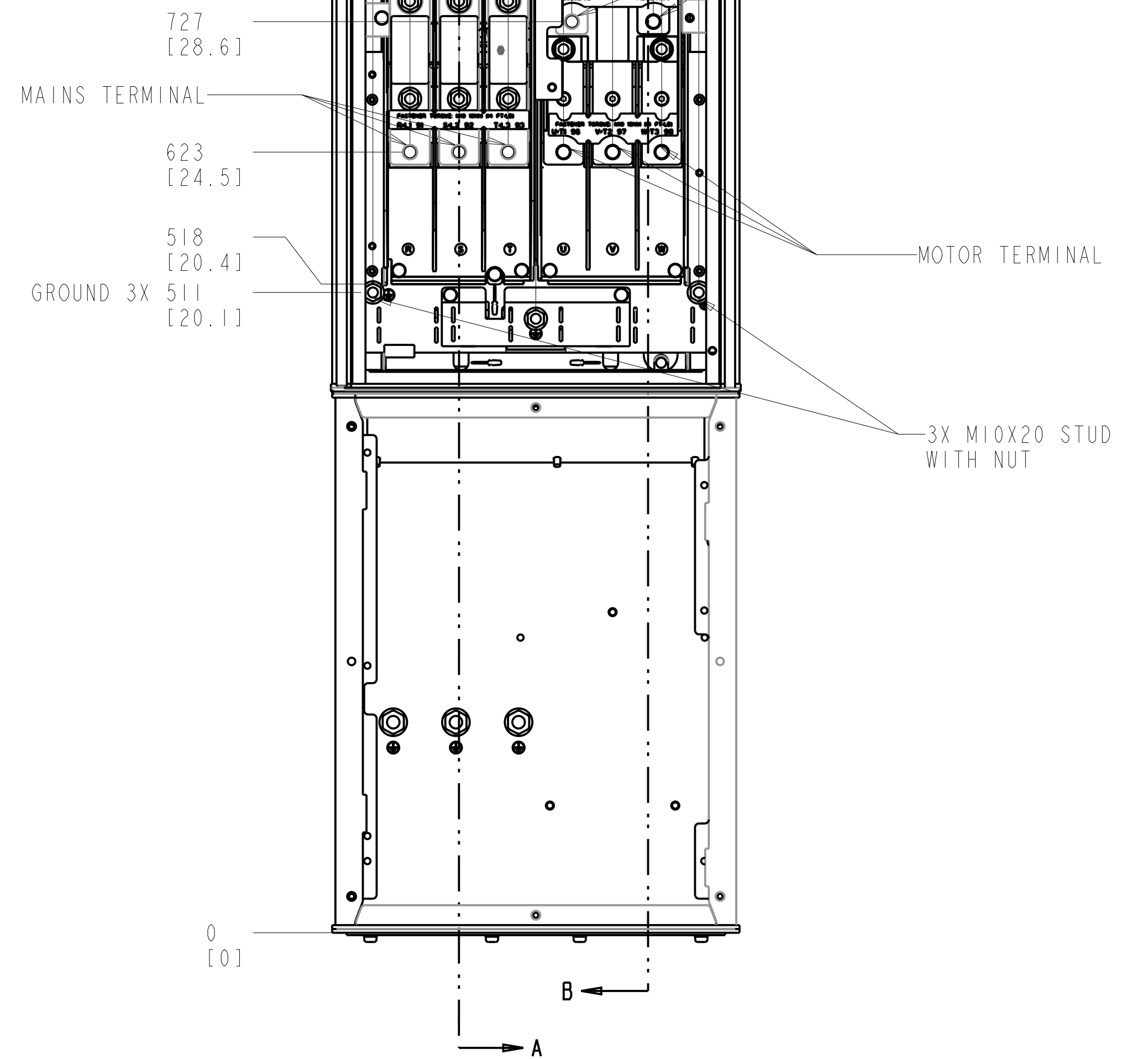
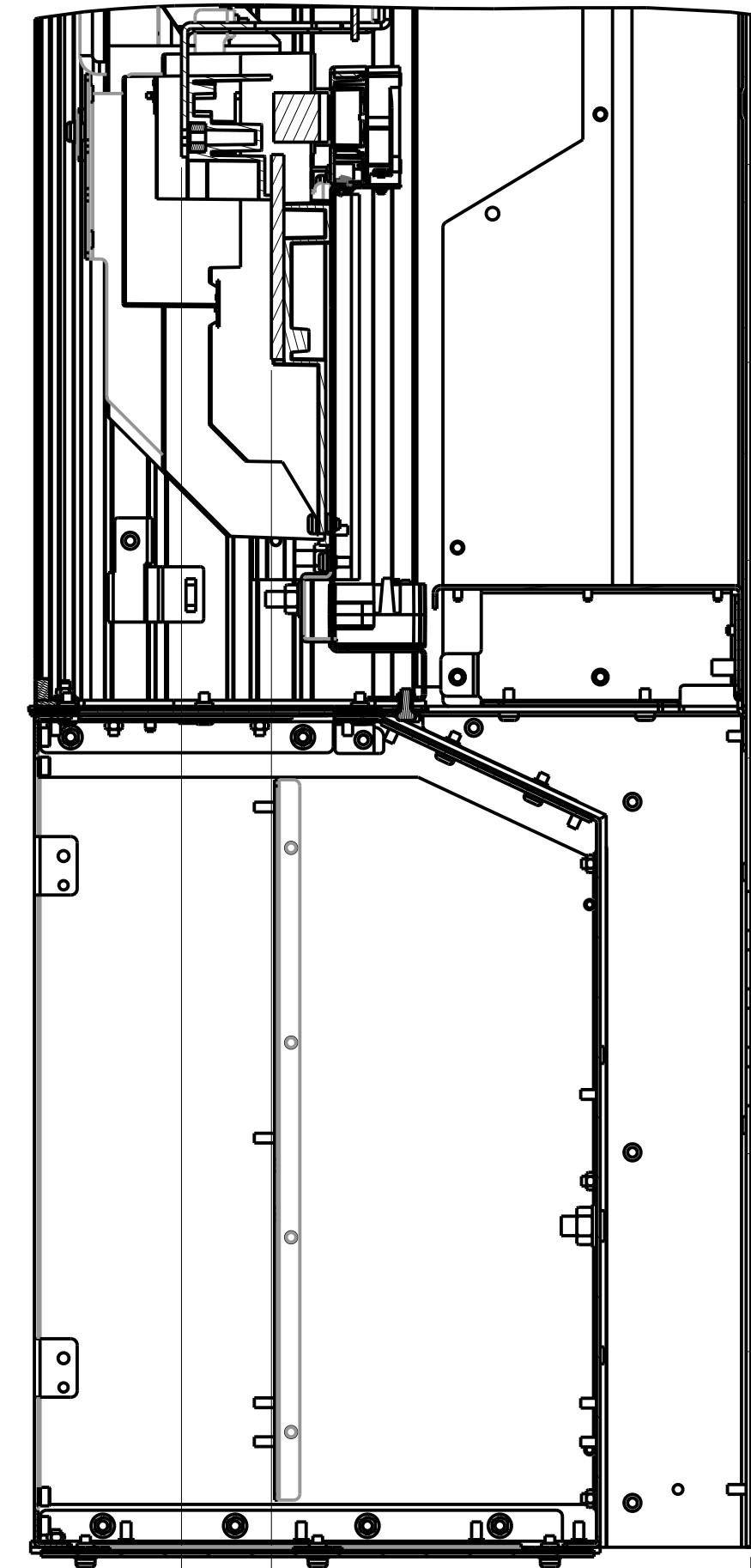
1

BRAKE ONLY

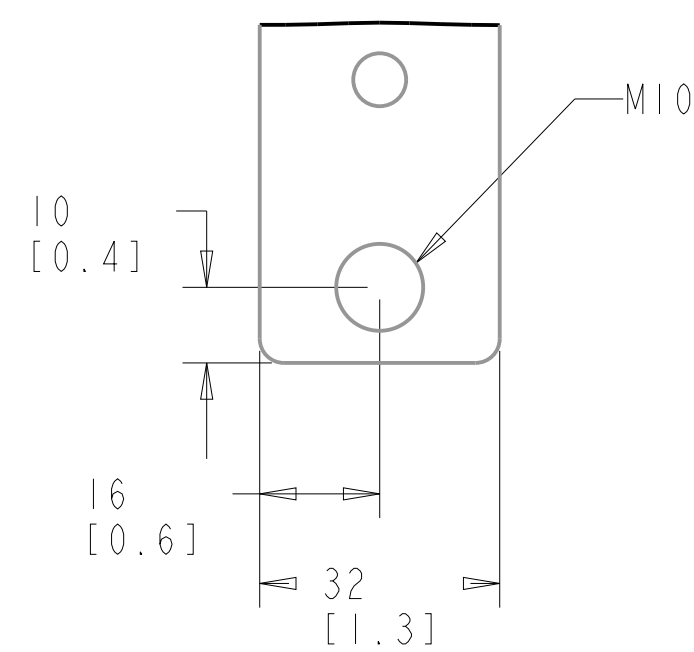
SECTION A-A MAINS TERMINALS



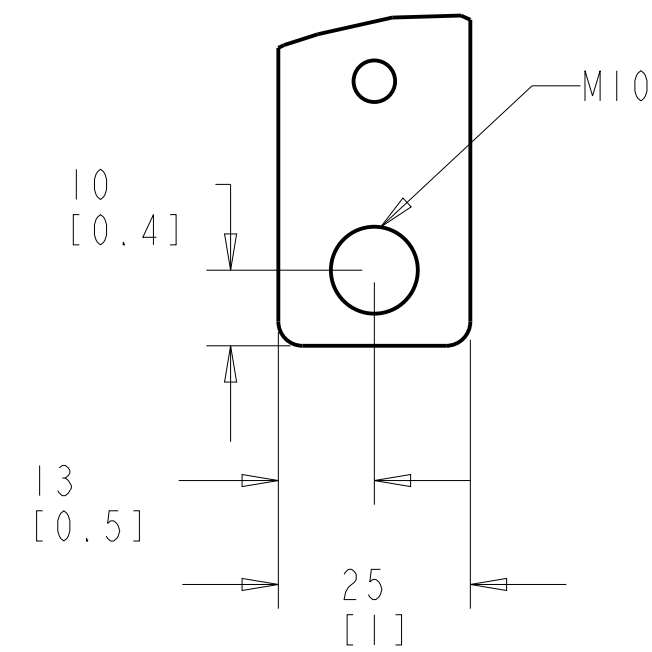
SECTION B-B MOTOR TERMINALS BRAKE / REGEN TERMINALS



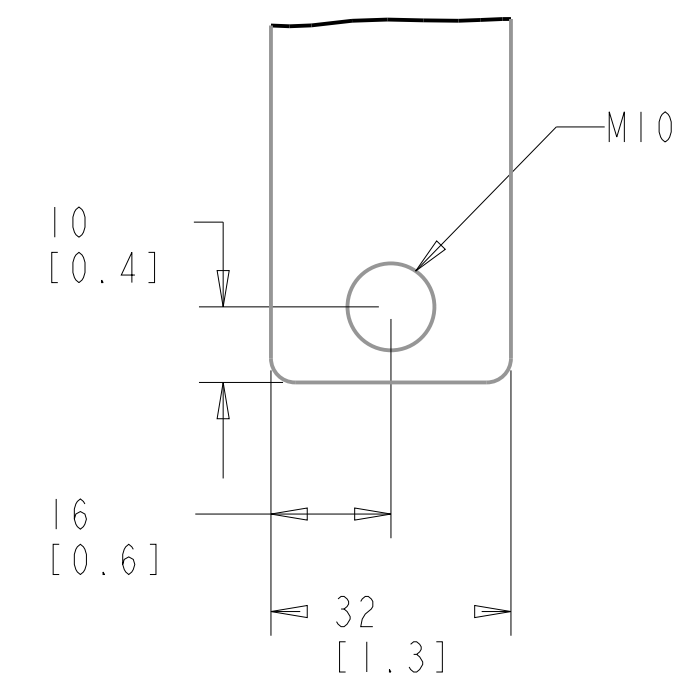
MAINS TERMINAL



BRAKE/REGEN TERMINAL



MOTOR TERMINAL



NOTES:
1. 95MM² (310 MCM) MAX WIRE SIZE

TITLE		
INSTALLATION DWG, DSH, TRANE		
SIZE D	MODEL P454-1038	REV 001
SCALE 0.300	DRAWING NO. 177R0567	SHEET 3 OF 5

8

7

6

5

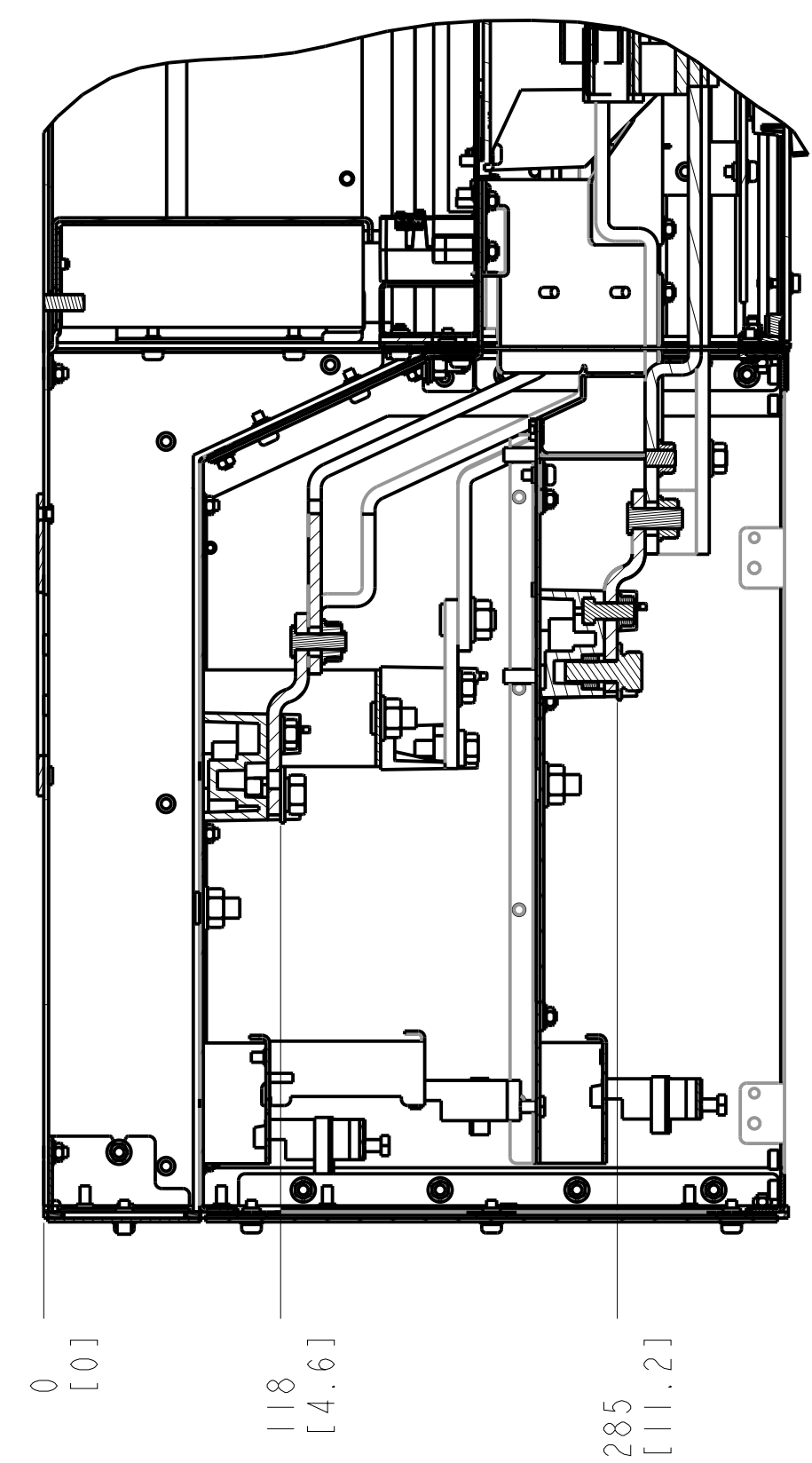
4

3

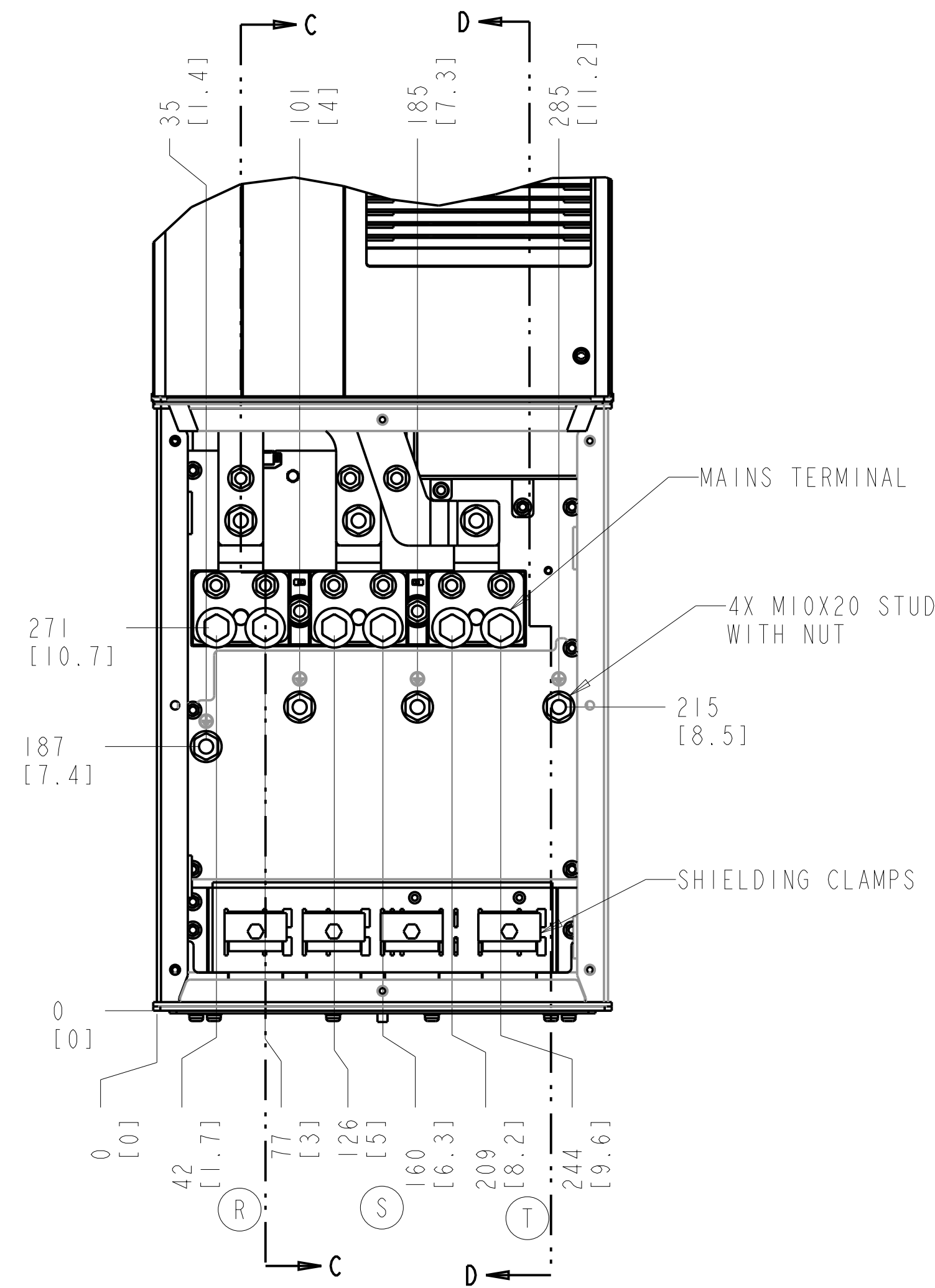
2

1

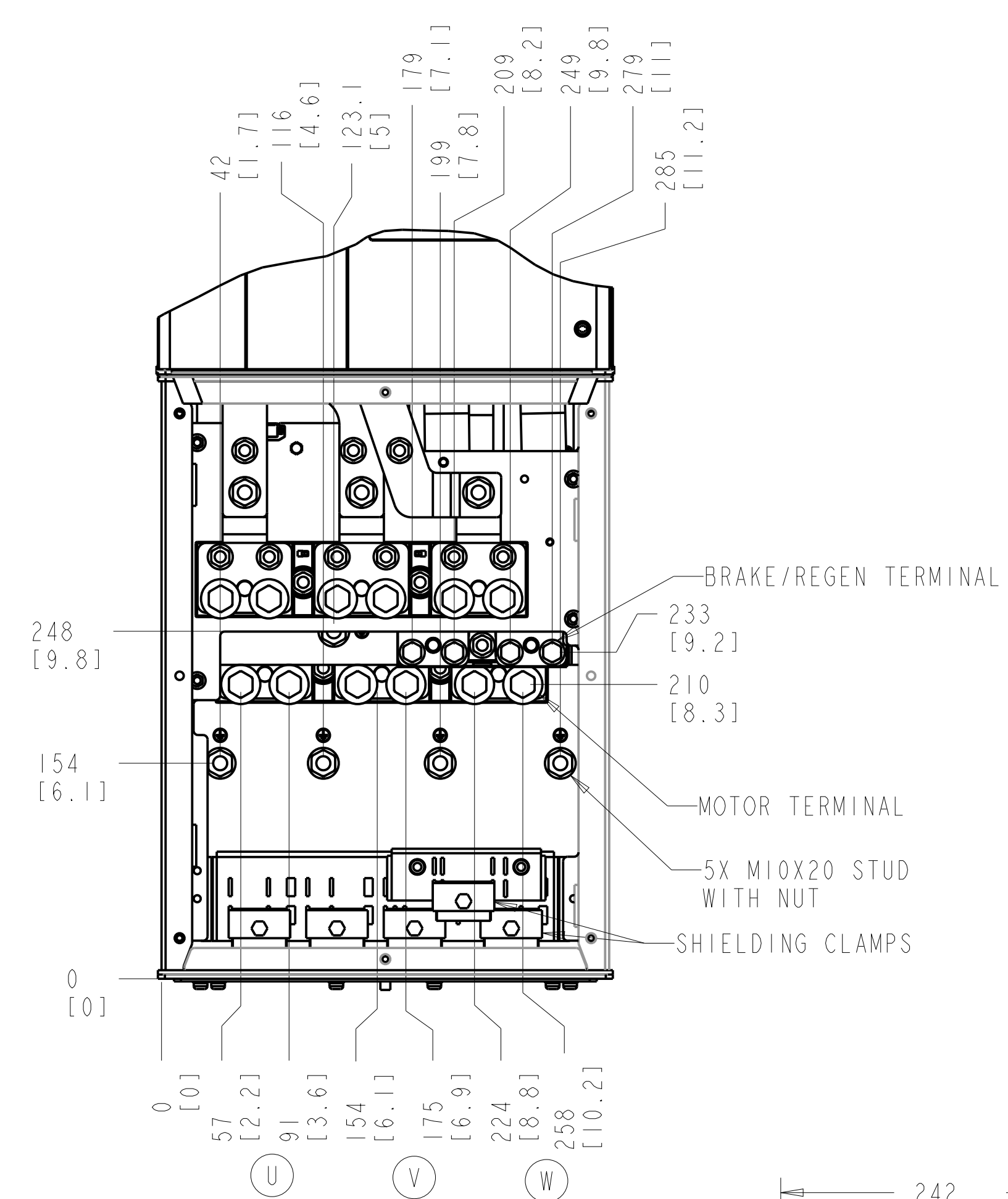
SECTION C-C
MAINS TERMINAL
MOTOR TERMINAL



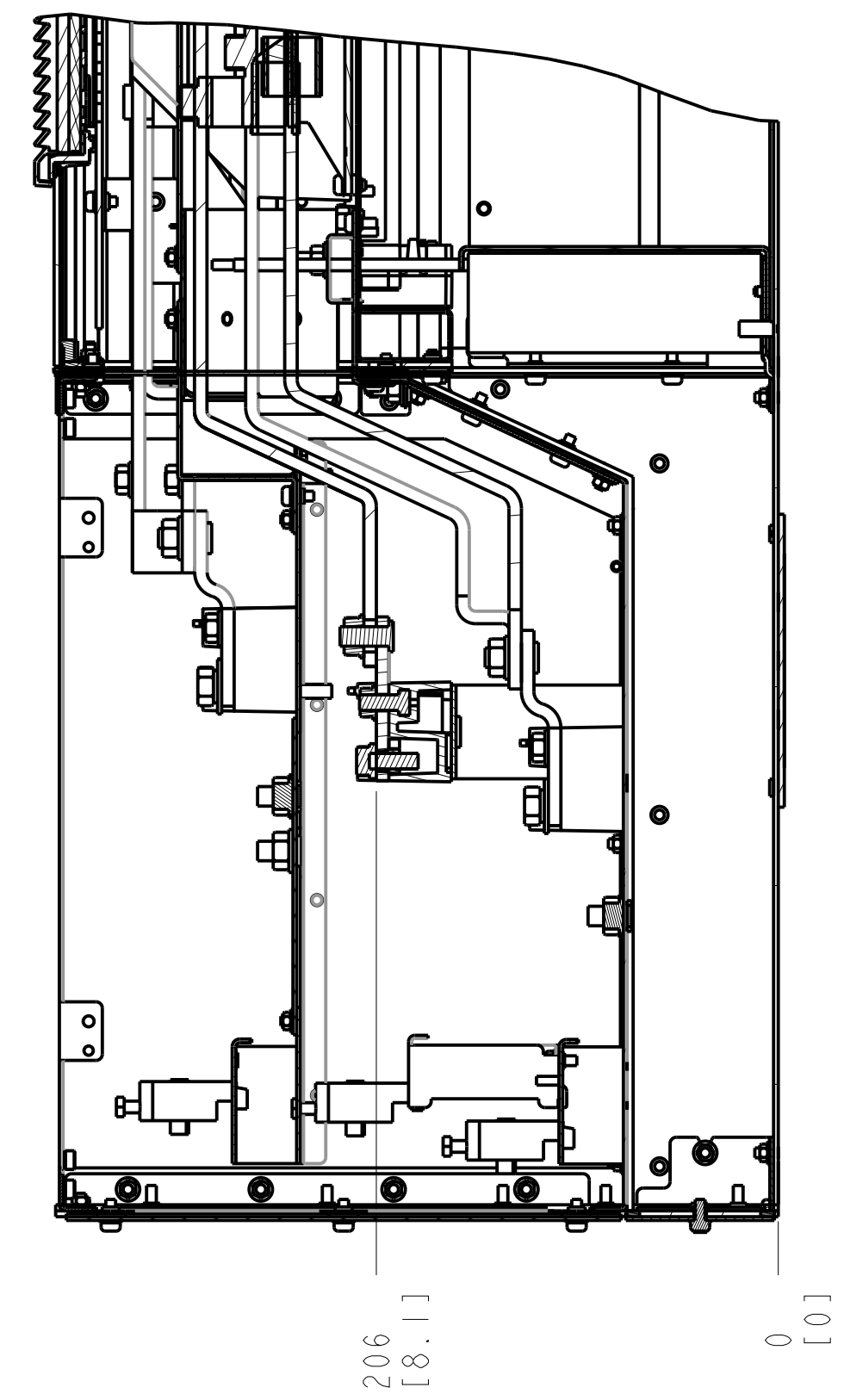
MAINS TERMINAL



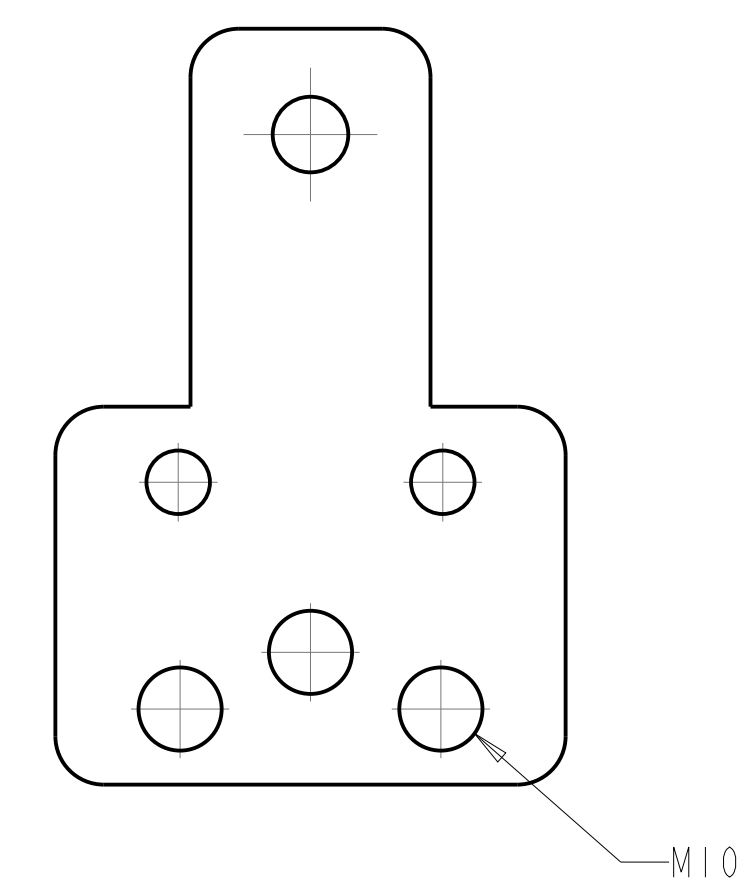
MOTOR TERMINAL
BRAKE TERMINAL



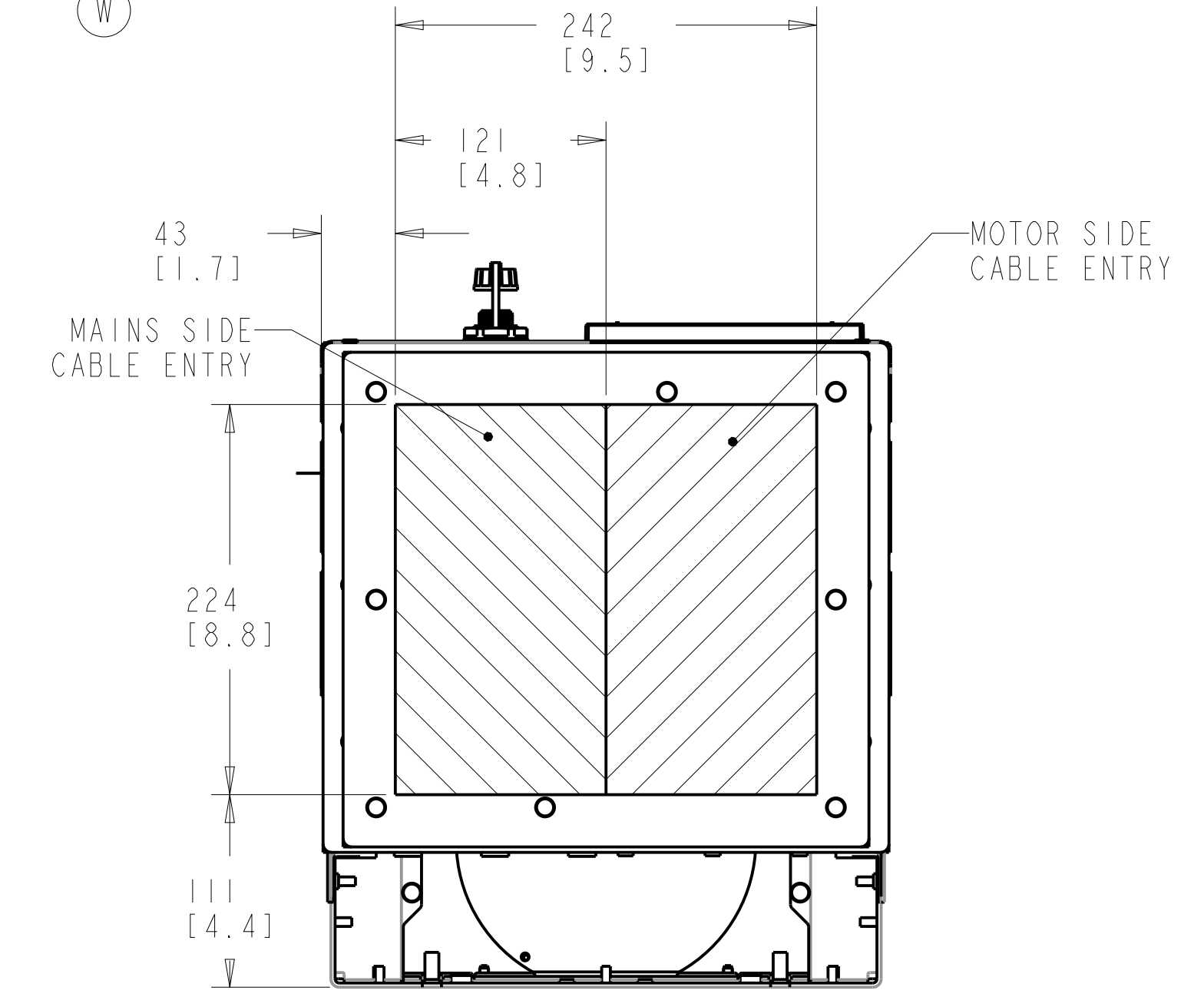
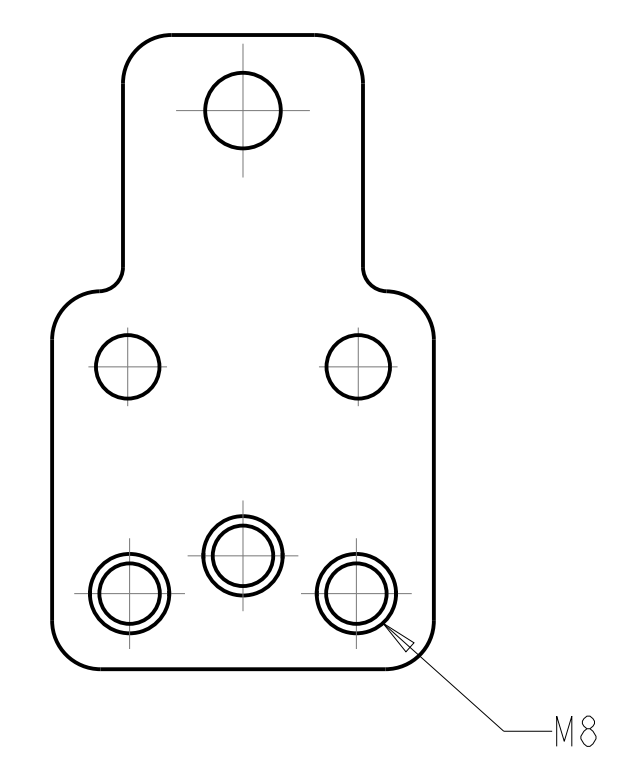
SECTION D-D
BRAKE TERMINAL



MAINS TERMINAL
MOTOR TERMINAL



BRAKE/REGEN TERMINAL



BOTTOM VIEW

NOTES:

1. PLACE CABLES THROUGH MARKED AREAS.
2. 95MM² (3/0 MCM) MAX WIRE SIZE FOR TWO CABLES PER PHASE.
3. 50MM² (1/0 MCM) MAX WIRE SIZE FOR FOUR CABLES PER PHASE.

TITLE		
INSTALLATION DWG, DSH, TRANE		
SIZE	MODEL	REV
D	P454-1038	001
SCALE	DRAWING NO.	SHEET
0.300	177R0567	4 OF 5

THE TABLES BELOW ARE USED TO DETERMINE THE FRAME SIZE FOR A GIVEN POWER AND VOLTAGE RATING, WITH A DISCONNECT OR BRAKE.

1) IDENTIFY THE POWER IN NORMAL OVERLOAD (N.O.) OR HIGH OVERLOAD (H.O.), KILOWATTS (KW) OR HORSEPOWER (HP).

2) READ DOWN THE COLUMN TO THE ROW WITH THE CORRECT VOLTAGE TO IDENTIFY THE FRAME SIZE.

THIS DRAWING IS FOR D5H FRAMES,

THE TABLE BELOW CAN BE USED TO DETERMINE THE FRAME SIZE IF THE SPECIFIC MODEL/TYPE CODE WITH A DISCONNECT OR BRAKE CHOPPER IS KNOWN.

KW RATED DRIVES			
KW HIGH OVERLOAD	110	132	160
KW NORMAL OVERLOAD	132	160	200
400V	D5H	D5H	
500V	D5H	D5H	D5H
525V	D5H	D5H	
690V	D5H	D5H	

HORSEPOWER RATED DRIVES		
HP HIGH OVERLOAD	150	200
HP NORMAL OVERLOAD	200	250
460V	D5H	D5H
575V	D5H	

PLATFORM	VOLTAGE	MODEL/TYPECODE	FRAME(IP21/IP54)
HVAC	T4	TR-200N110T4	D5H
		TR-200N132T4	
		TR-200N160T4	
	T7	TR-200N110T7	
		TR-200N132T7	
		TR-200N160T7	