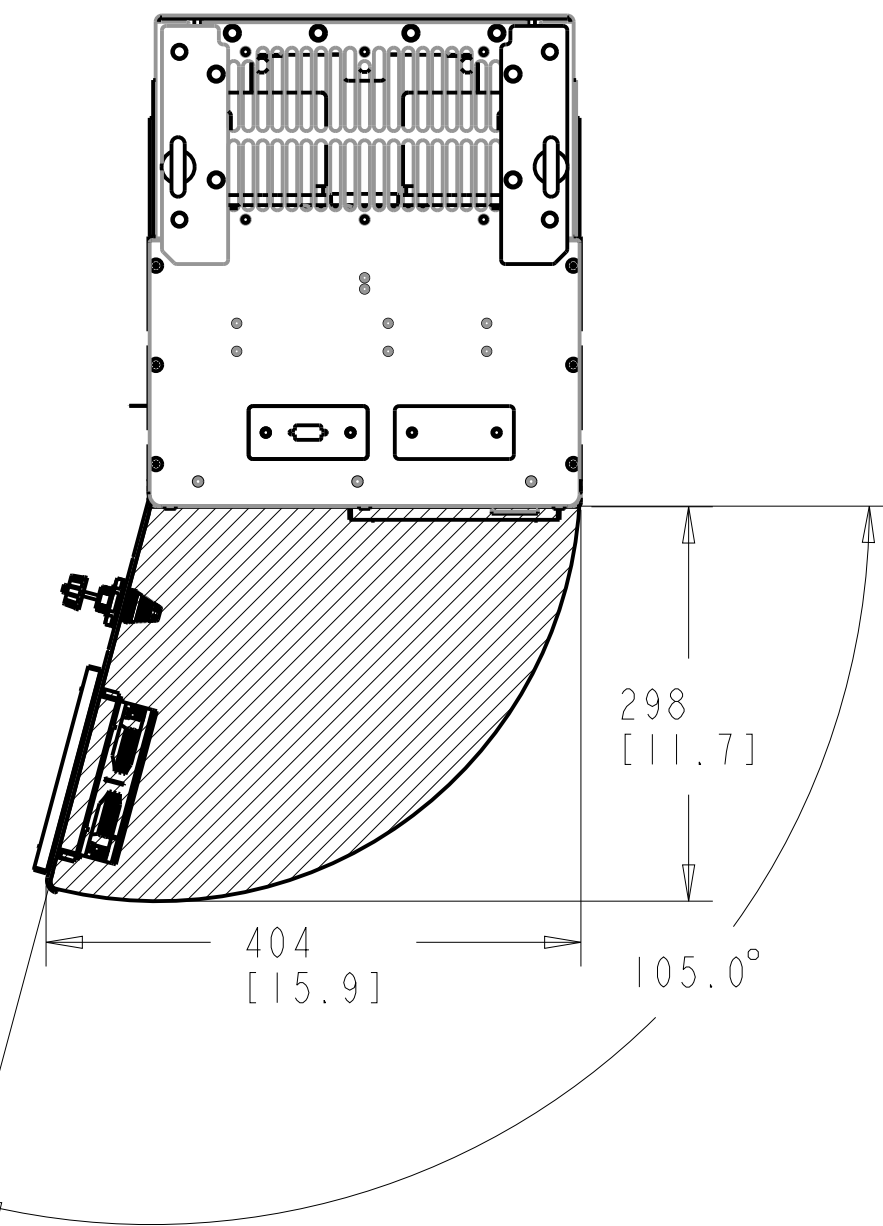
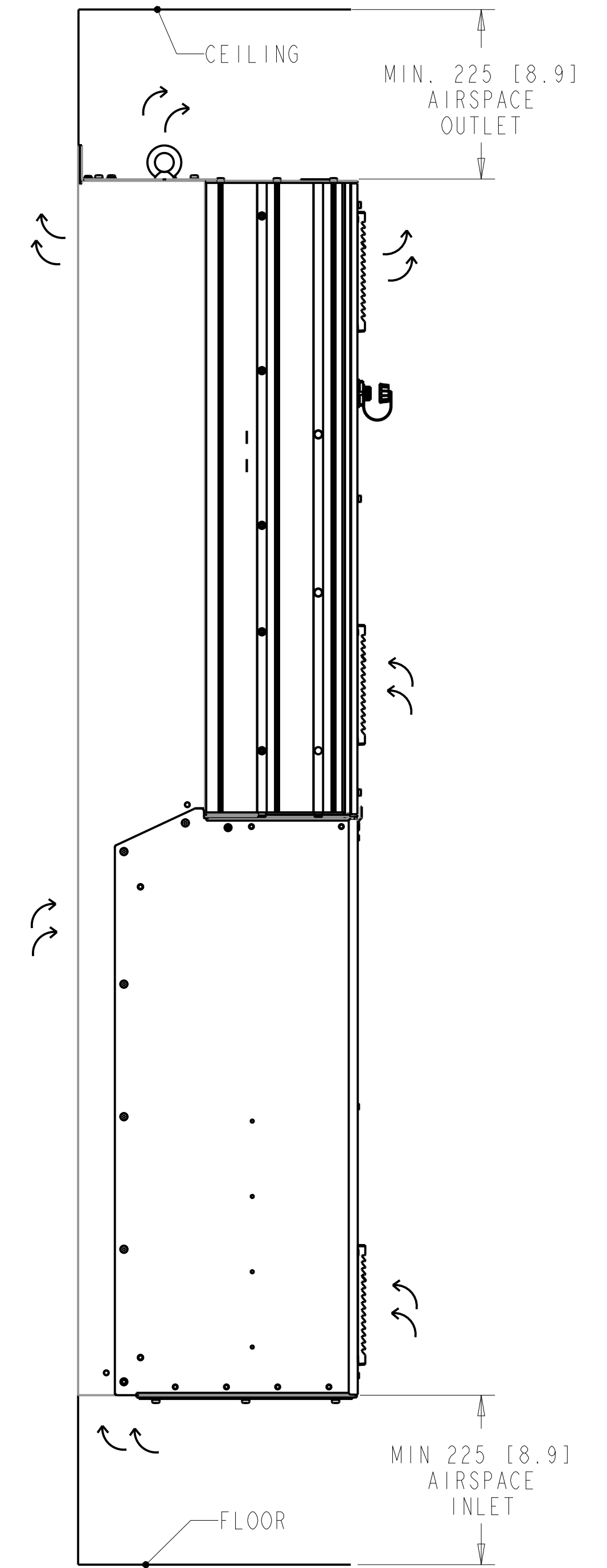
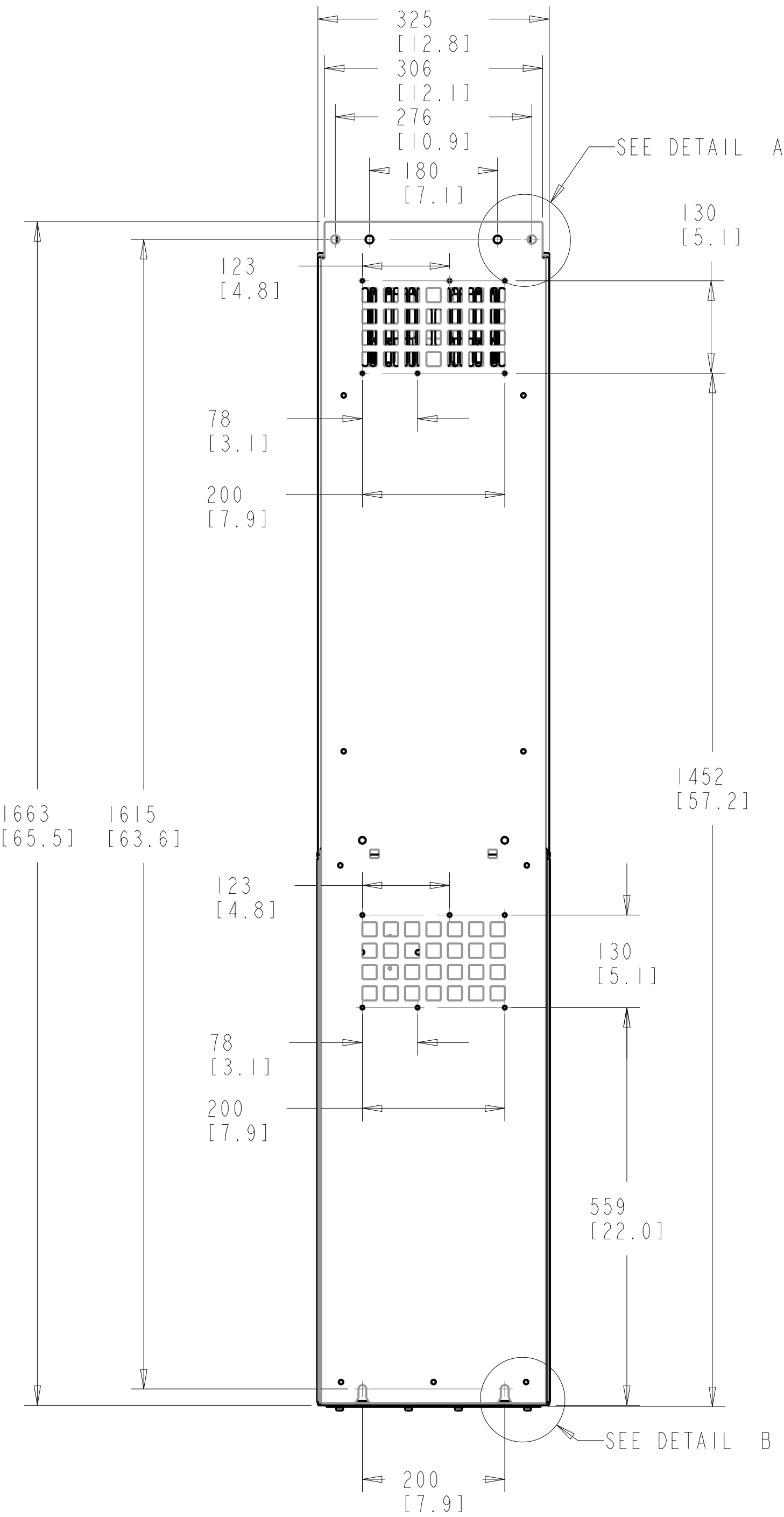
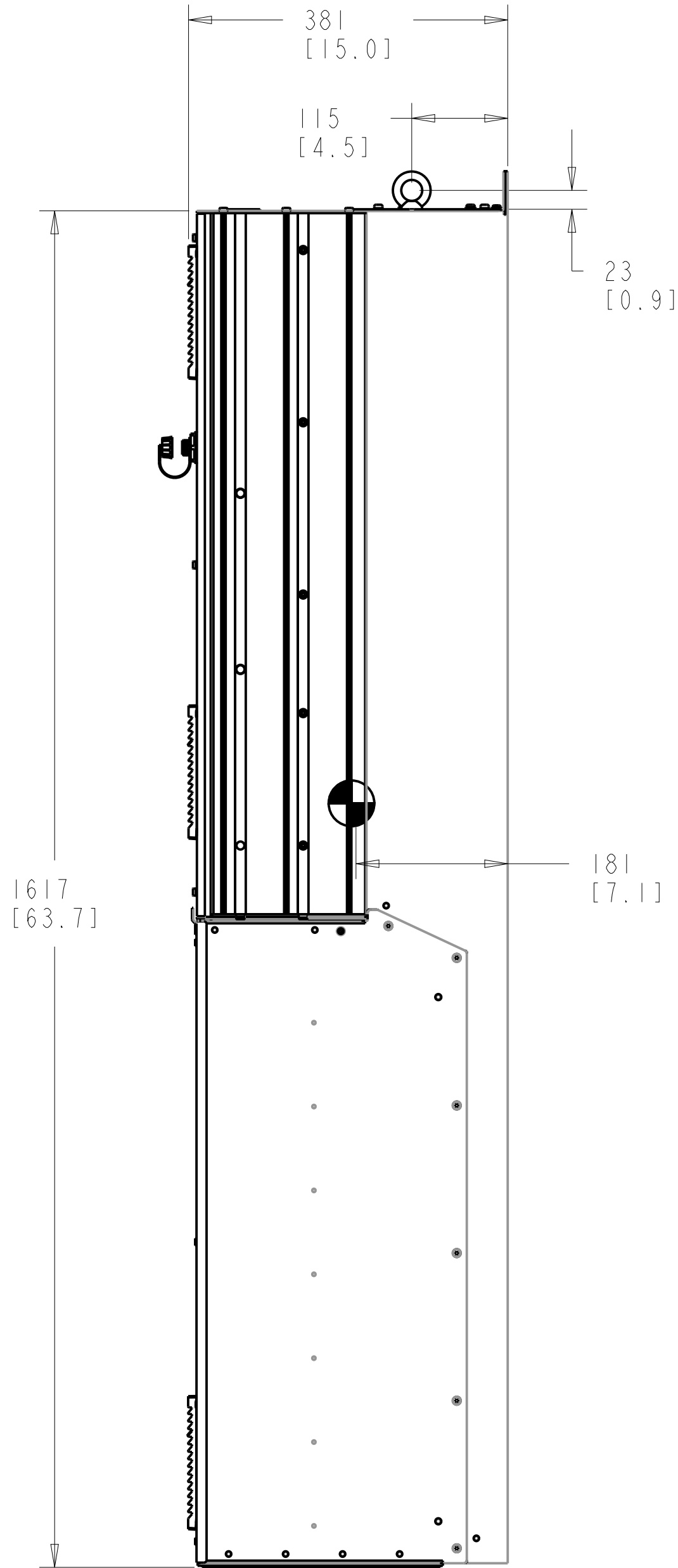
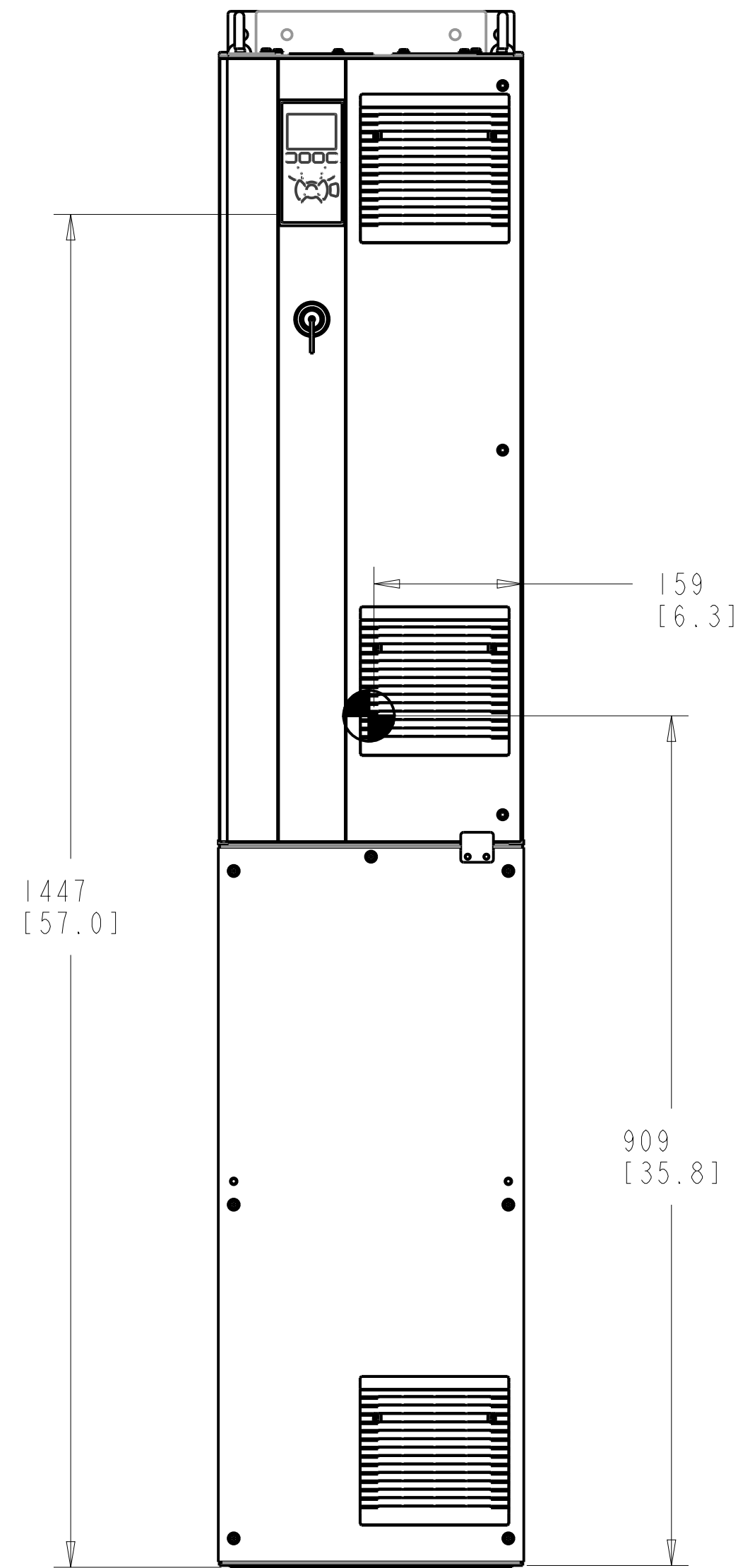
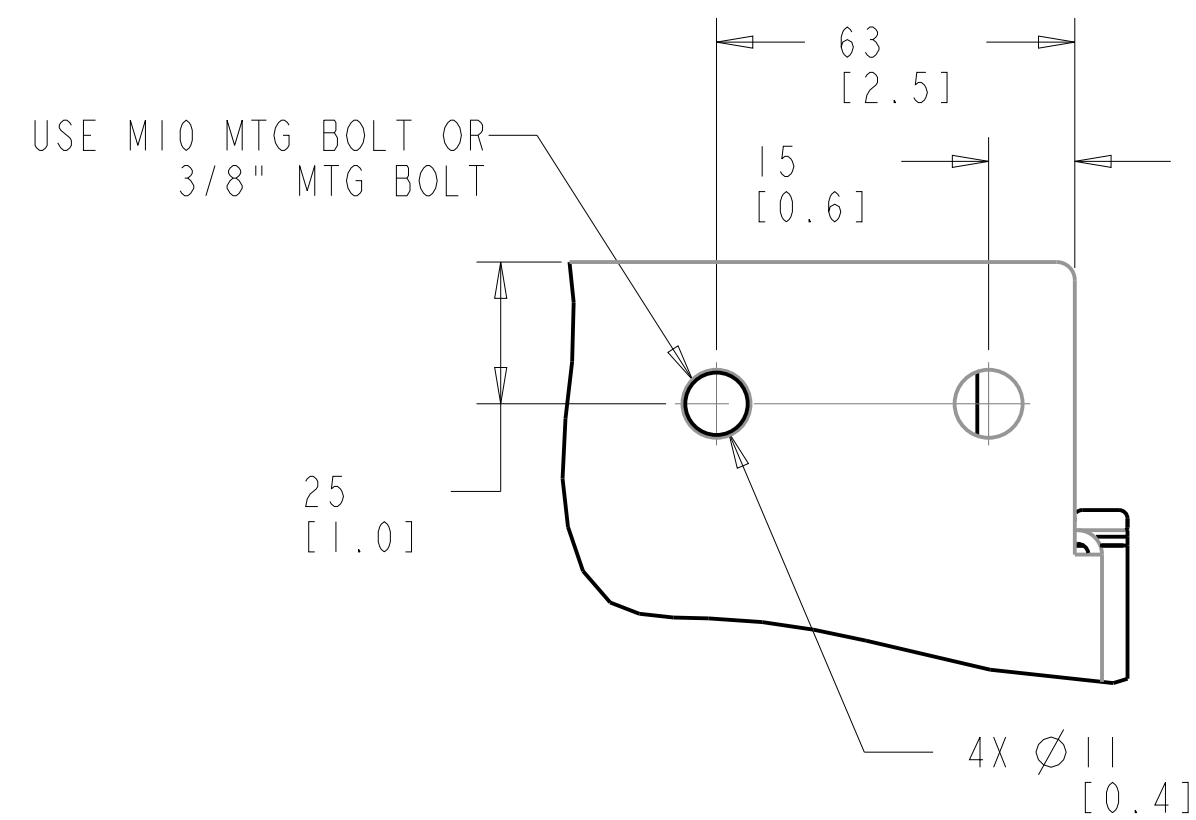


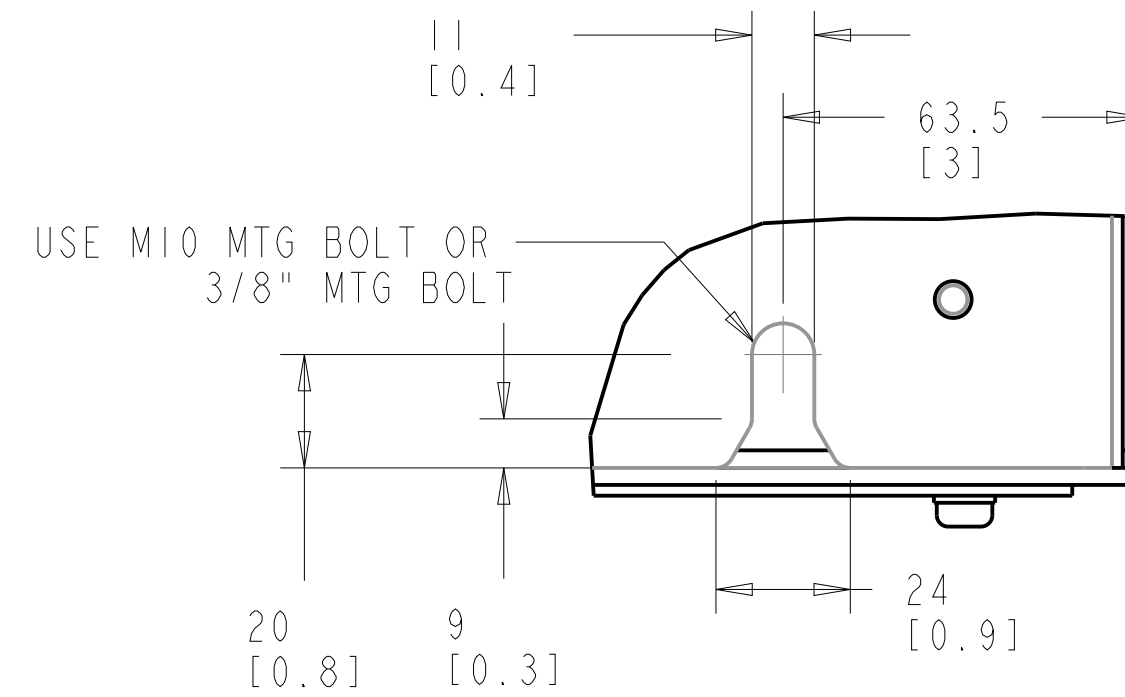
- NOTICE -
THIS DRAWING IS PROPRIETARY AND SHALL NOT BE COPIED OR ITS CONTENTS DISCLOSED TO OUTSIDE PARTIES WITHOUT THE WRITTEN CONSENT OF THE TRANE COMPANY



DETAIL A
TOP MOUNTING HOLES



DETAIL B
BOTTOM MOUNTING HOLES

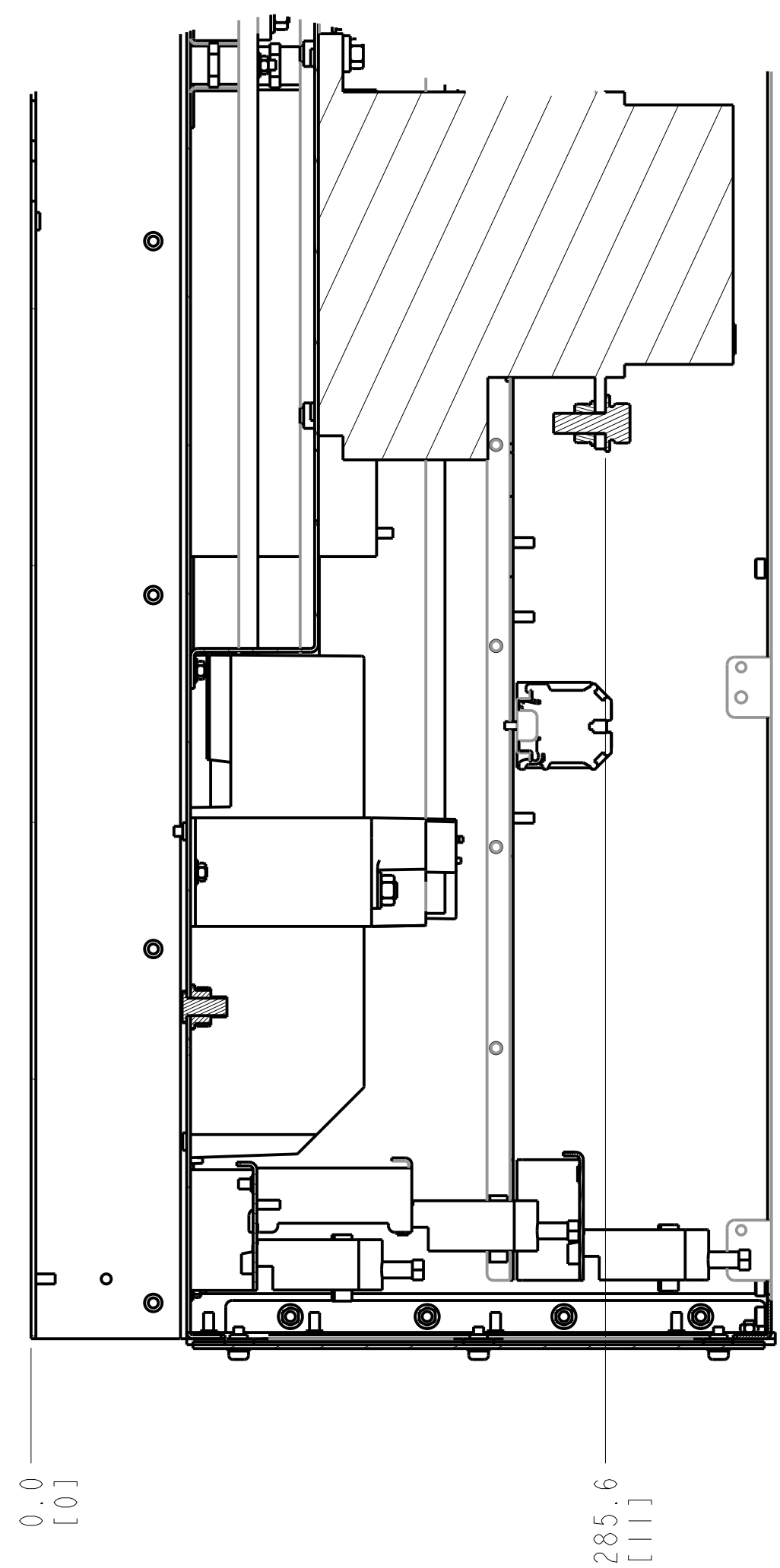


1. MAX AIRFLOW (BACKCHANNEL) - 7 M³ / MIN (250 CFM)
2. MAX AIRFLOW (CABINET) - 1.7 M³ / MIN (60 CFM)
3. MAX WEIGHT = 128 KG (283 LBS)
4. CENTER OF GRAVITY:
APPROXIMATE LOCATION ONLY, LOCATION MAY VARY BASED ON POWER RATING AND OPTIONS ORDERED.

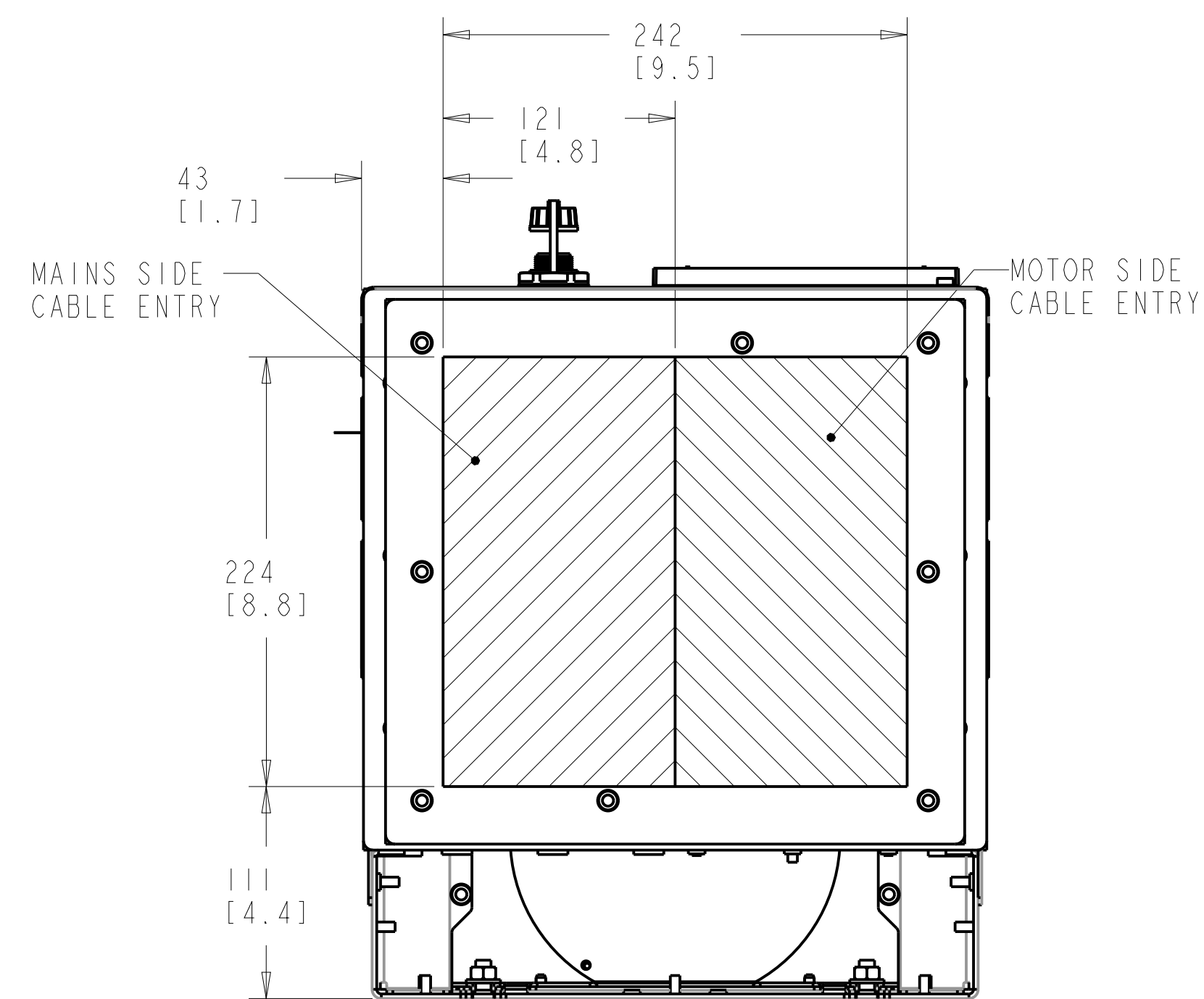
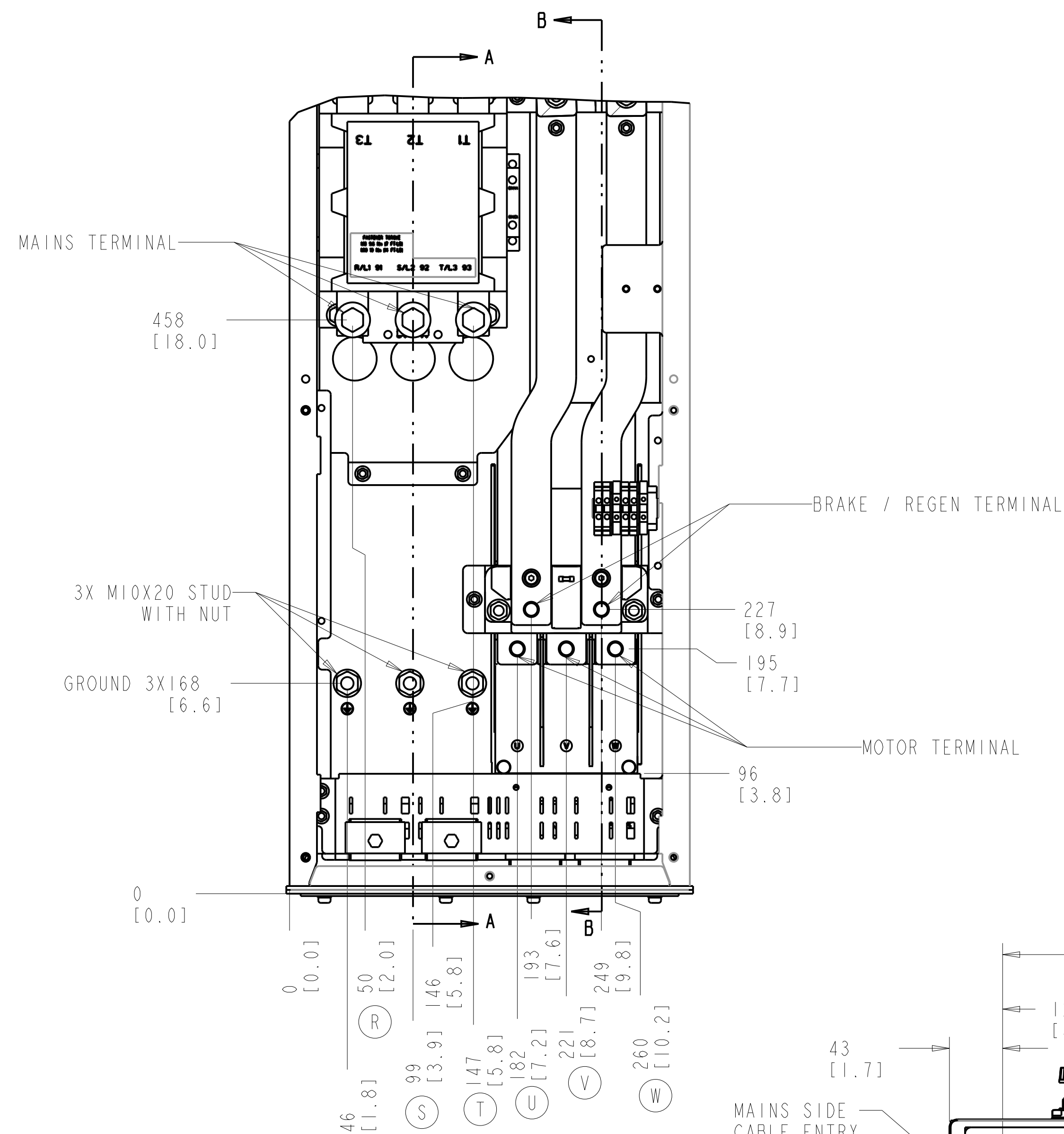
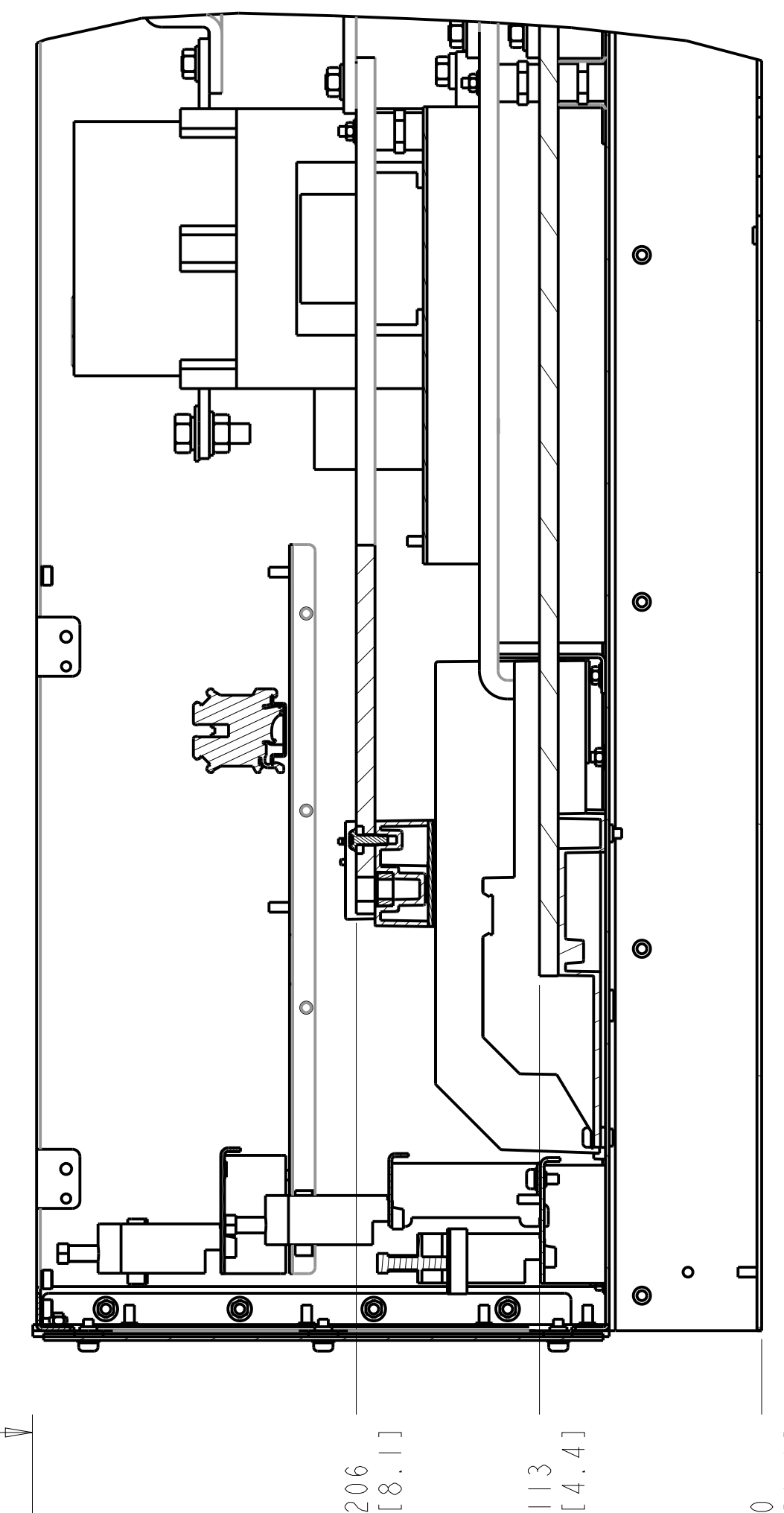
| UNLESS OTHERWISE SPECIFIED INTERPRET DIM. AND TOL. PER ASME Y14.5M-1994 | | PROPERTIES | | THE TRANE COMPANY | |
|---|----------|------------|-------------|----------------------------------|----------|
| .X±0.4 | .XX±0.20 | ≤±0.5 | MATERIAL | INSTALLATION DRAWING, D6H, TRANE | |
| DIM. ARE IN MILLIMETERS WEIGHTS ARE IN KILOGRAMS | | | FINISH | | |
| THIRD ANGLE PROJECTION | | | THICKNESS | | |
| | | | EST. WEIGHT | | |
| | | | APPROVALS | INITIALS | DATE |
| | | | DRAWN | KD | 11/04/13 |
| | | | CHECKED | | |
| | | | ENGR | | |
| | | | SCALE | DRAWING NO. | REV |
| | | | 0.175 | 177R0568 | 001 |
| | | | | | 1 OF 5 |

CONTACTOR ONLY

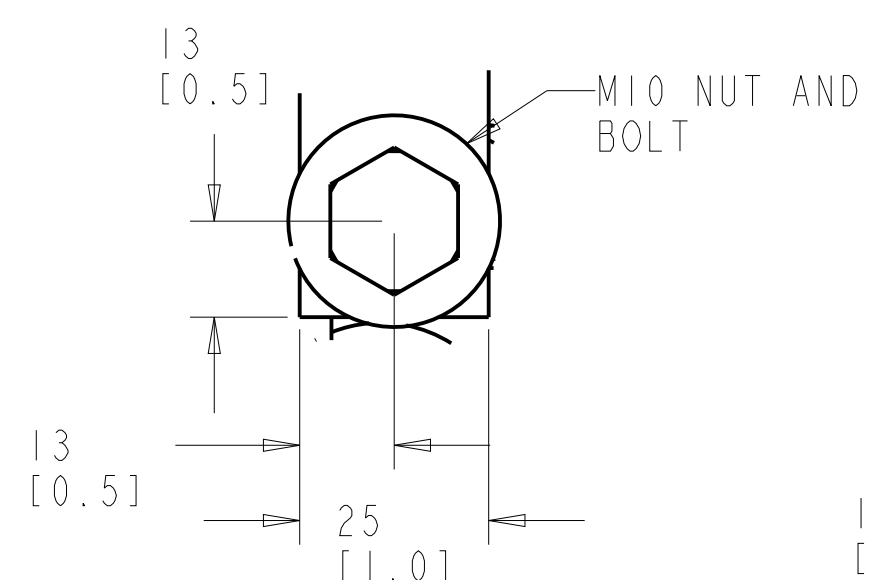
SECTION A-A
MAINS TERMINALS



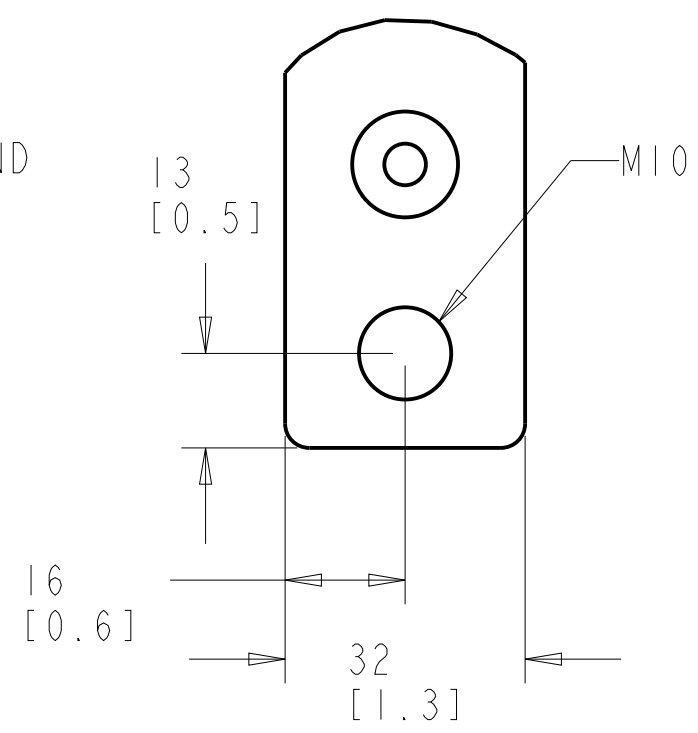
SECTION B-B
MOTOR TERMINALS
BRAKE / REGEN TERMINALS



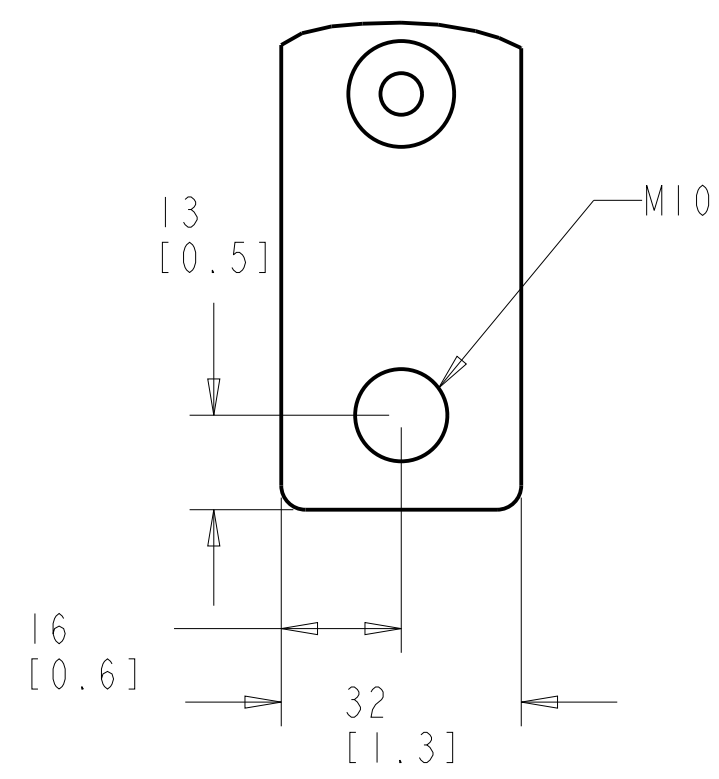
MAINS TERMINAL



BRAKE / REGEN TERMINAL



MOTOR TERMINAL



BOTTOM VIEW

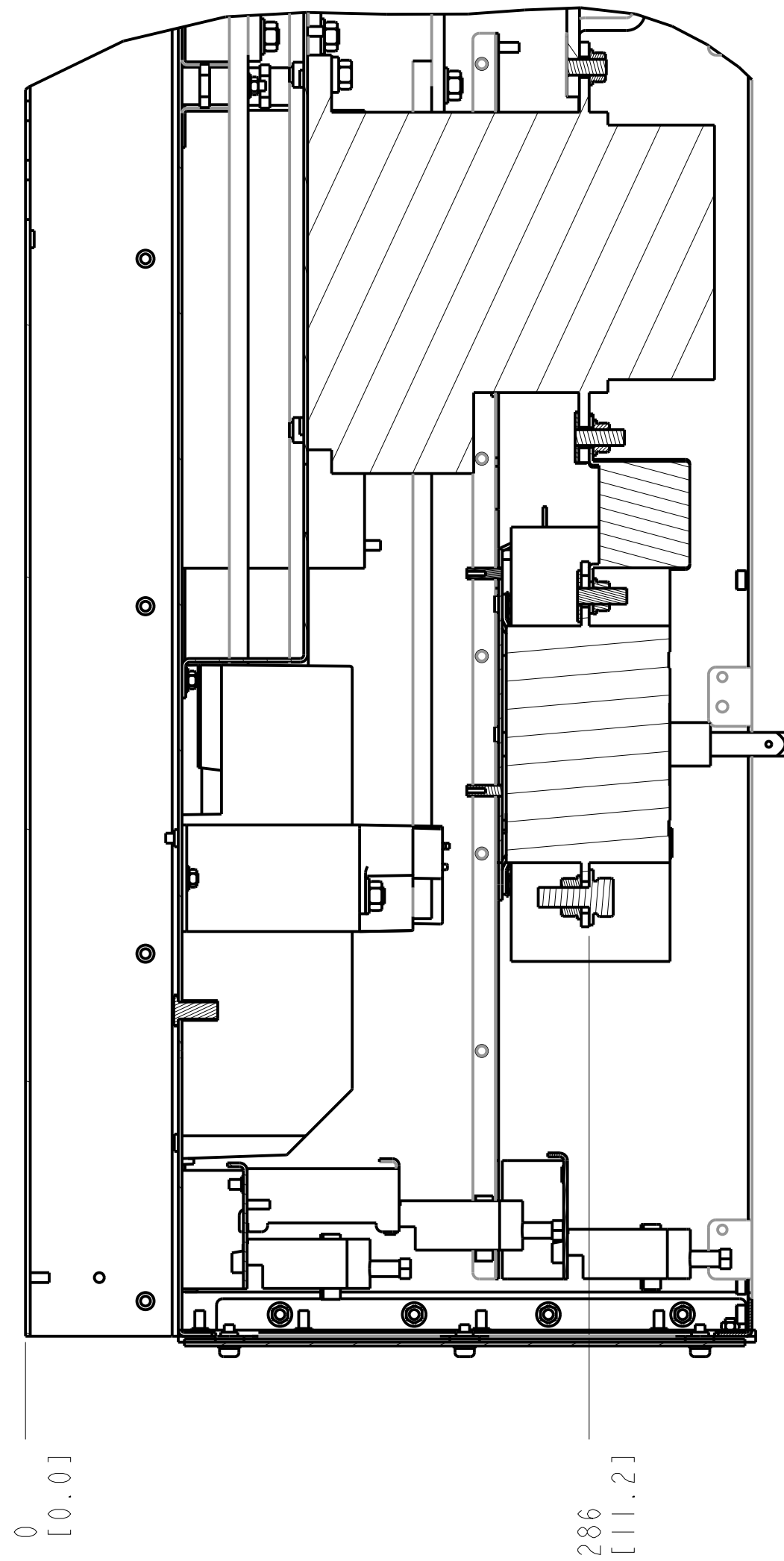
NOTES:

1. PLACE CABLES THROUGH MARKED AREAS
2. 95MM² (310 MCM) MAX WIRE SIZE

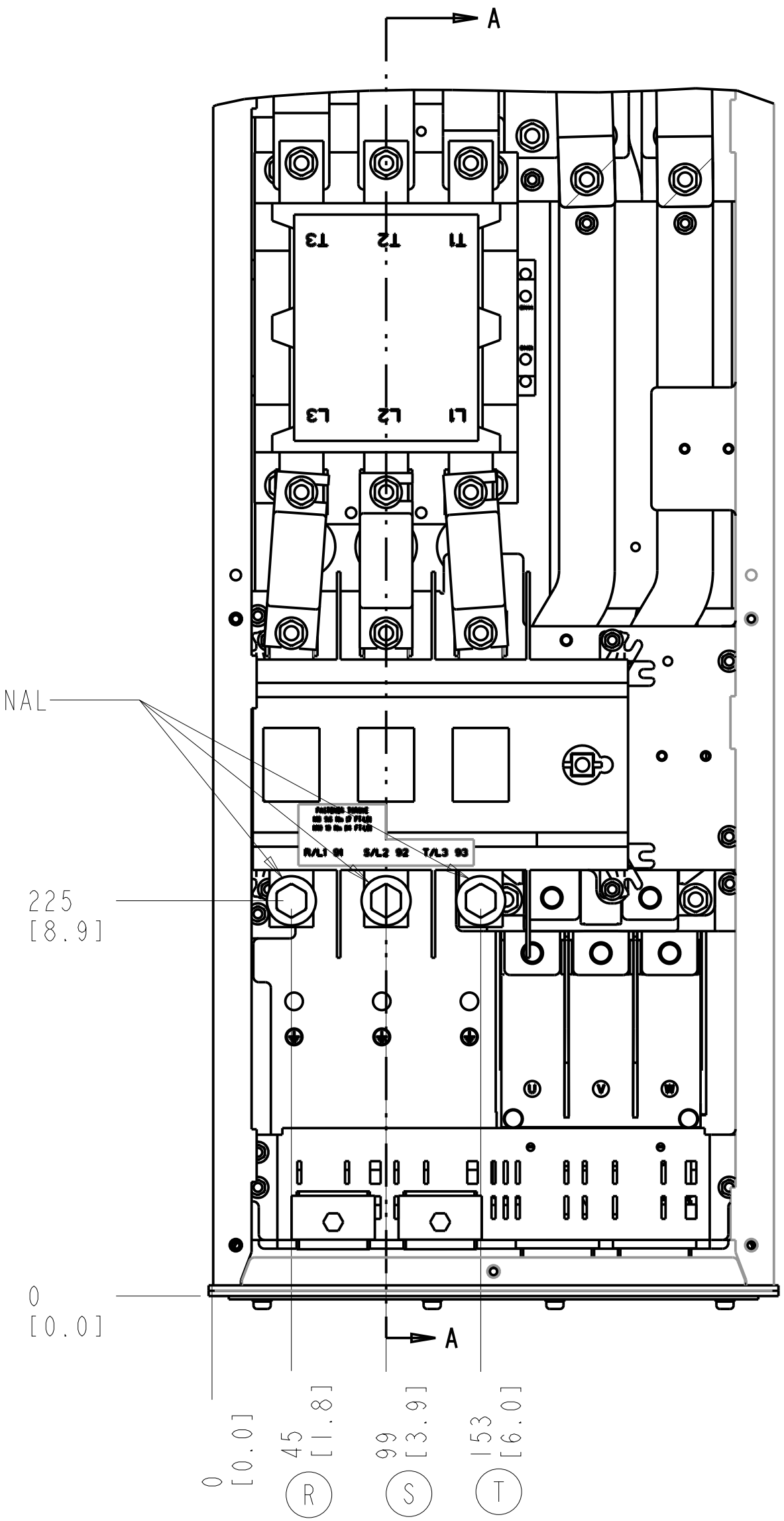
| TITLE | | | |
|----------------------------------|-------------------------|-----------------|--|
| INSTALLATION DRAWING, D6H, TRANE | | | |
| SIZE D | MODEL P454-1018 | REV 001 | |
| SCALE 0.350 | DRAWING NO. 177R0568 | SHEET 2 OF 5 | |

CONTACTOR AND DISCONNECT

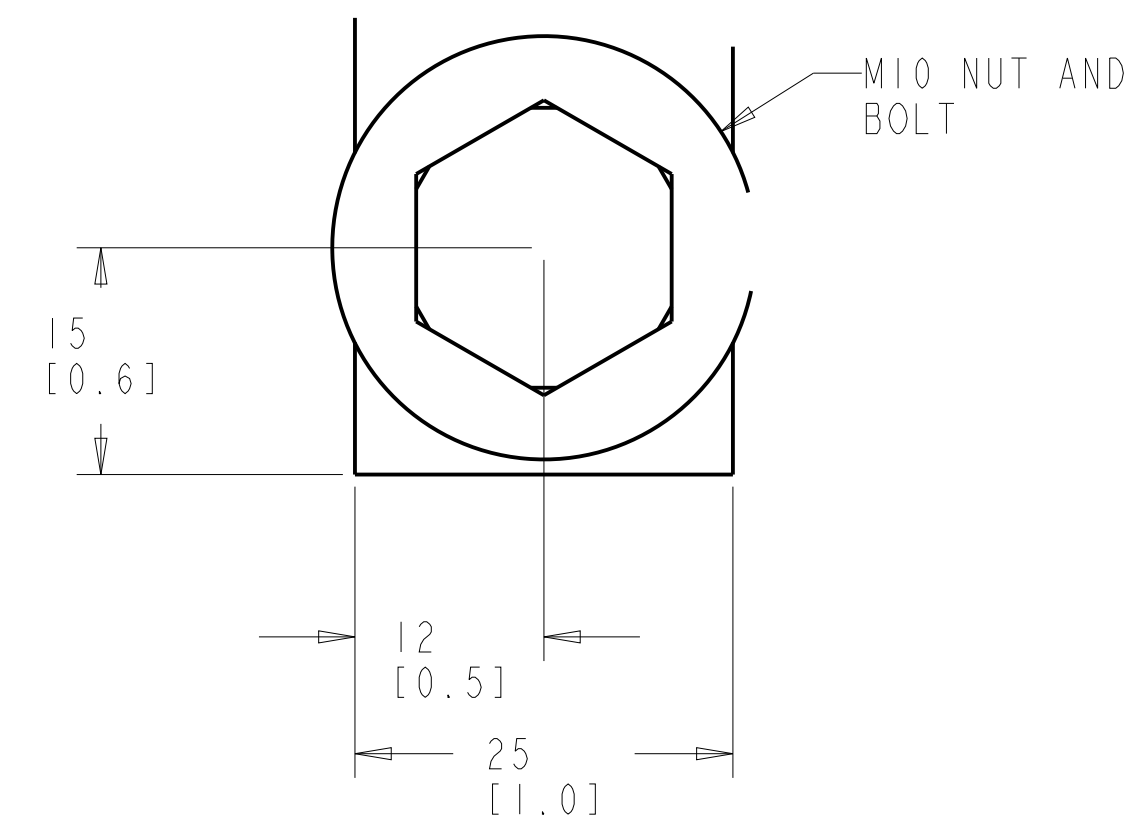
SECTION A-A
MAINS TERMINALS



MAINS TERMINAL



MAINS TERMINAL



NOTES:

1. REFER TO SHEET 2 FOR BRAKE AND MOTOR TERMINAL DETAILS

| TITLE | | |
|----------------------------------|-------------------------|-----------------|
| INSTALLATION DRAWING, D6H, TRANE | | |
| SIZE D | MODEL P454-1018 | REV 001 |
| SCALE 0.175 | DRAWING NO. 177R0568 | SHEET 3 OF 5 |

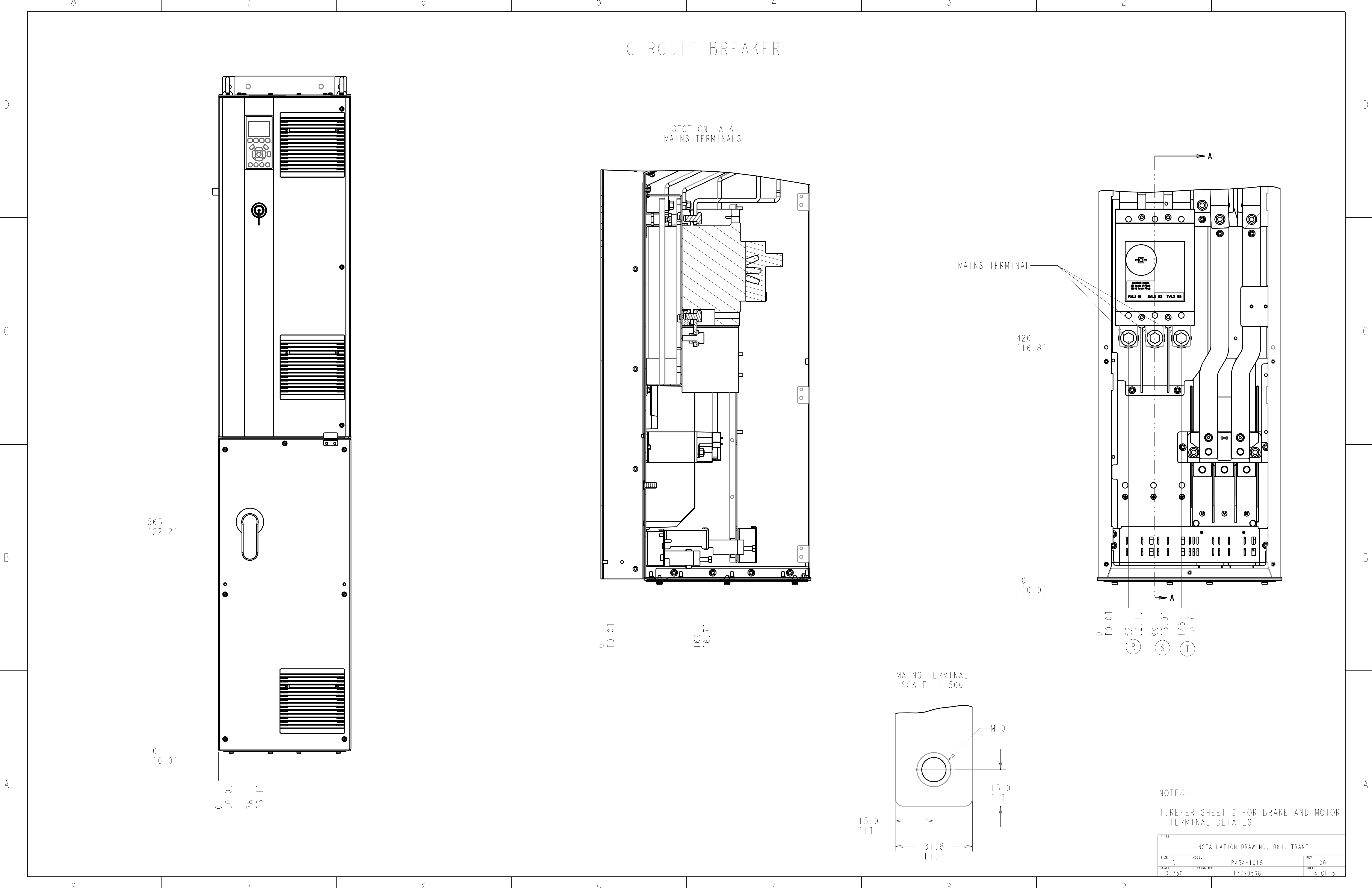
303 [11.9]

0 [0.0]

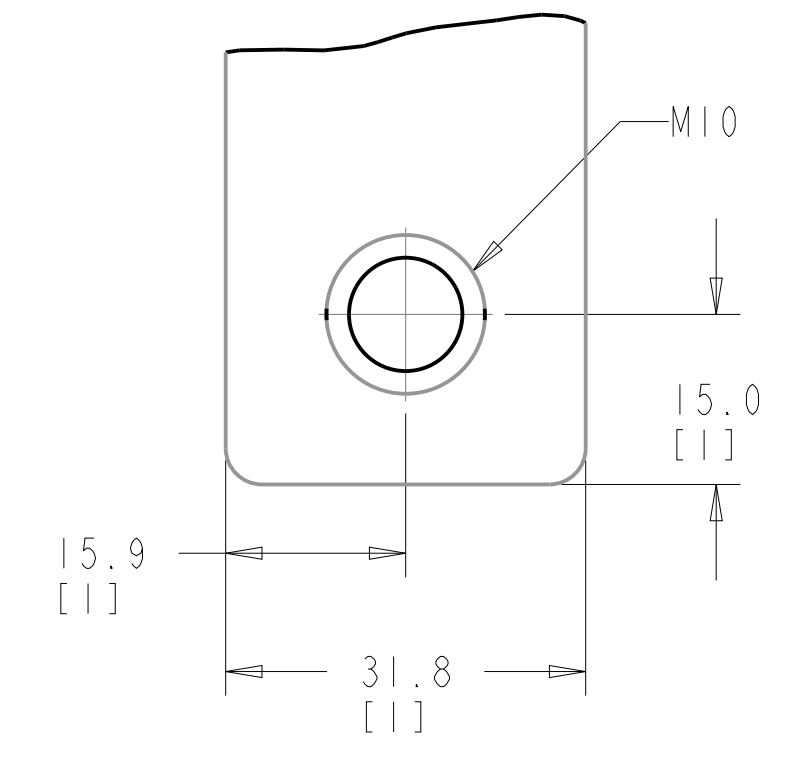
0 [0.0]

211 [8.3]

CIRCUIT BREAKER



MAINS TERMINAL SCALE 1.500



NOTES:
1. REFER SHEET 2 FOR BRAKE AND MOTOR TERMINAL DETAILS

| TITLE | | | |
|----------------------------------|----------------------|--------------|--|
| INSTALLATION DRAWING, D6H, TRANE | | | |
| SIZE D | MODEL P454-1018 | REV 001 | |
| SCALE 0.350 | DRAWING NO. 177R0568 | SHEET 4 OF 5 | |

THE TABLES BELOW ARE USED TO DETERMINE THE FRAME SIZE FOR A GIVEN POWER AND VOLTAGE RATING, WITH A CIRCUIT BREAKER, CONTACTOR OR CONTACTOR+DISCONNECT.

1) IDENTIFY THE POWER IN NORMAL OVERLOAD (N.O.) OR HIGH OVERLOAD (H.O.), KILOWATTS (KW) OR HORSEPOWER (HP).

2) READ DOWN THE COLUMN TO THE ROW WITH THE CORRECT VOLTAGE TO IDENTIFY THE FRAME SIZE.

THIS DRAWING IS FOR D6H FRAMES,

THE TABLE BELOW CAN BE USED TO DETERMINE THE FRAME SIZE IF THE SPECIFIC MODEL/TYPE CODE WITH A CIRCUIT BREAKER, CONTACTOR OR CONTACTOR+DISCONNECT.

| KW RATED DRIVES | | | |
|--------------------|-----|-----|-----|
| KW HIGH OVERLOAD | 110 | 132 | 160 |
| KW NORMAL OVERLOAD | 132 | 160 | 200 |
| 400V | D6H | D6H | |
| 500V | D6H | D6H | D6H |
| 525V | D6H | D6H | |
| 690V | D6H | D6H | |

| HORSEPOWER RATED DRIVES | | |
|-------------------------|-----|-----|
| HP HIGH OVERLOAD | 150 | 200 |
| HP NORMAL OVERLOAD | 200 | 250 |
| 460V | D6H | D6H |
| 575V | D6H | |

| PLATFORM | VOLTAGE | MODEL/TYPECODE | FRAME(IP21/IP54) |
|----------|---------|----------------|------------------|
| HVAC | T4 | TR-200N110T4 | D6H |
| | | TR-200N132T4 | |
| | | TR-200N160T4 | |
| | T7 | TR-200N110T7 | |
| | | TR-200N132T7 | |
| | | TR-200N160T7 | |