

- NOTES:**
- \* INDICATES COMPONENTS NOT SUPPLIED BY MANUFACTURER.
  - REFER TO THE INSTALLATION AND OPERATION MANUAL FOR DRIVE FUNCTIONS AND PARAMETER SETTINGS.
  - FEEDER CIRCUIT PROTECTION, INPUT POWER AND MOTOR WIRING MUST BE SELECTED IN ACCORDANCE WITH THE N.E.C., ANY APPLICATION LOCAL CODES AND THE LOAD CURRENT RATING.
  - REPLACE JUMPER 'J1' WITH NORMALLY CLOSED SAFETY INTERLOCK CONTACT AS NECESSARY. CONTACT MUST BE RATED 1/4 HP @ 120VAC MINIMUM.
  - PANEL MAY REQUIRE DERATING, CONSULT DRIVE MANUAL OR FACTORY FOR FOLLOWING CONDITIONS:
    - HIGHER SWITCHING FREQUENCY THAN DRIVE DEFAULT
    - HIGHER THAN PANEL LISTED AMBIENT TEMPERATURES
    - ELEVATION ABOVE 3300 FEET (1000 METERS)
    - LONG MOTOR LEAD LENGTHS
  - WHEN MOTOR OVERLOADS SIZES ARE DIFFERENT, MOTOR 1 WILL BE THE LARGER OF THE TWO MOTORS

**DRIVE PARAMETER SETTINGS**

| PARAMETER # | NAME              | SETTING | VALUE              |
|-------------|-------------------|---------|--------------------|
| 0-02        | MOTOR SPEED UNIT  | 1       | HZ                 |
| 0-03        | REGIONAL SETTINGS | 1       | NORTH AMERICA      |
| 1-03        | TORQUE CHAR.      | 1       | VARIABLE TORQUE    |
| 5-02        | TERMINAL 29 TYPE  | 1       | OUTPUT             |
| 5-31        | TERMINAL 29       | 5       | RUNNING            |
| 14-20       | RESET MODE        | 13      | INFINITE AUTO REST |

|     |         |       |   |     |   |      |    |  |          |
|-----|---------|-------|---|-----|---|------|----|--|----------|
| B   |         |       | -NOTICE-<br>THIS DRAWING IS PROPRIETARY AND SHALL NOT BE COPIED OR ITS CONTENTS DISCLOSED TO OUTSIDE PARTIES WITHOUT THE WRITTEN CONSENT OF THE TRANE COMPANY | DRN | NAME  |      |    | THE TRANE COMPANY<br>A DIVISION OF<br>AMERICAN STANDARD INC. |          |
| A   | SP10119 | 11/10 |   | DTM | NEMA 3R,240V,3C<br>, MAIN DISC, MAIN & DRIVE FUSE<br>,3MB,IR,DUAL MOTOR,4 FAN |      |    |  |          |
| DR  | SP10076 | 09/10 |   | APR | MODEL   | PAGE | OF | SIZE   | DWG NO.  |
| REV | ECN     | DATE  |   | DTM | TR200   | 1    | 2  | A  | 185B4240 |

WIRE COLOR SCHEME  
 BLACK - LINE VOLTAGE  
 RED - AC CONTROL  
 WHITE - AC CONTROL  
 WHITE - AC GROUNDED  
 CIRCUIT CONDUCTOR  
 BLUE - DC CONTROL  
 DC CONTROL  
 GREEN - CHASSIS GROUND

TERMINAL IDENTIFICATION

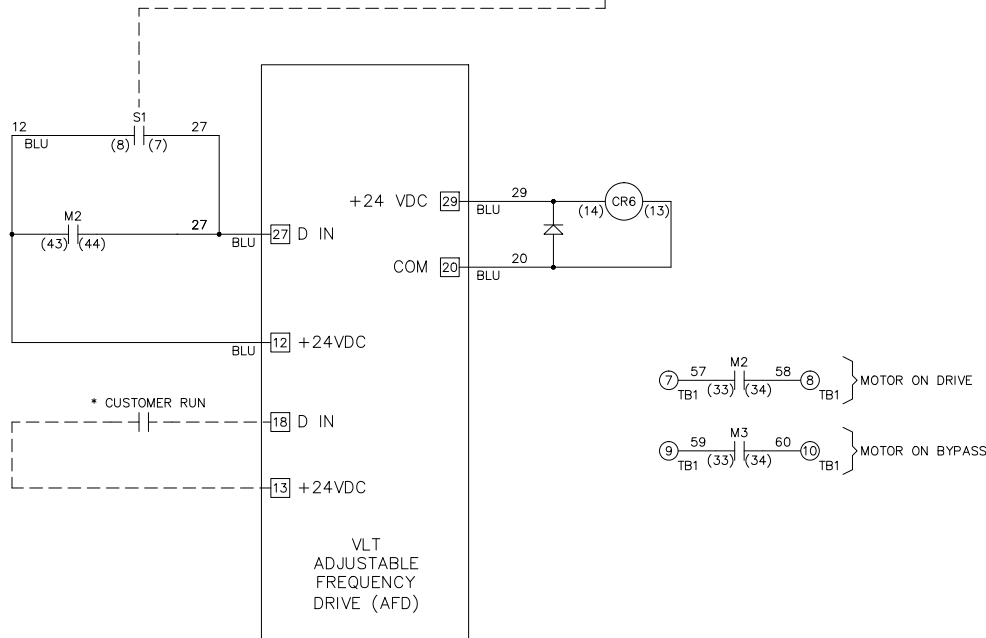
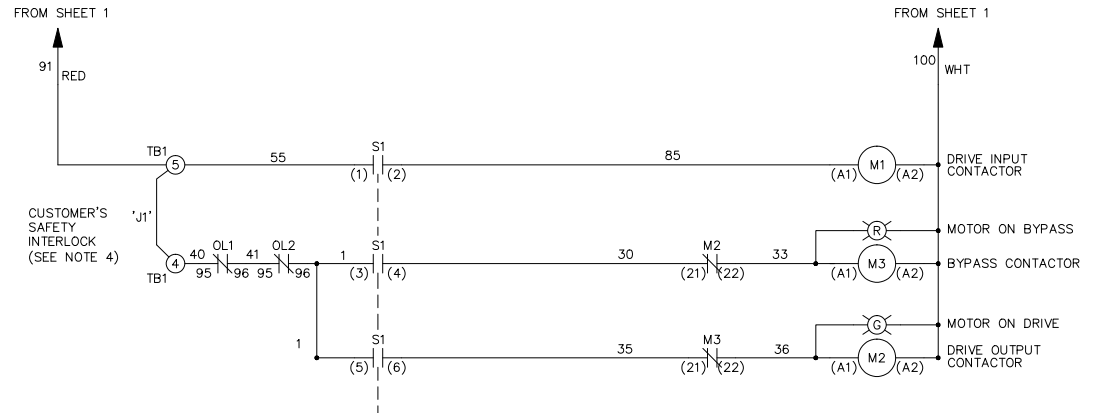
X - DRIVE TERMINAL  
 O - CUSTOMER TERMINAL

CUSTOMER DRY CONTACT RATINGS

| RELAY      | CONTACT RATING                  |
|------------|---------------------------------|
| CR6        | 5A @ 120VAC<br>1/10 HP @ 120VAC |
| M1, M2, M3 | 10A @ 120/240VAC                |

CONTACT SEQUENCE CHART FOR S1  
 X INDICATES CONTACT CLOSED

| CONTACT \ POSITION | DRIVE | OFF | BYPASS | TEST |
|--------------------|-------|-----|--------|------|
| 1-2                | X     |     |        | X    |
| 3-4                |       |     | X      | X    |
| 5-6                | X     |     |        |      |
| 7-8                |       |     |        | X    |



|     |         |       |   |                   |   |             |  |                     |
|-----|---------|-------|---|-------------------|---|-------------|--|---------------------|
| B   |         |       | <p align="center">-NOTICE-</p> <p>THIS DRAWING IS PROPRIETARY AND SHALL NOT BE COPIED OR ITS CONTENTS DISCLOSED TO OUTSIDE PARTIES WITHOUT THE WRITTEN CONSENT OF THE TRANE COMPANY</p> | DRN<br><i>DTM</i> | NAME<br>NEMA 3R,240V,3C<br>, MAIN DISC, MAIN & DRIVE FUSE<br>,3MB,IR,DUAL MOTOR,4 FAN |             | THE TRANE COMPANY<br>A DIVISION OF<br>AMERICAN STANDARD INC. |                     |
| A   | SP10119 | 11/10 |   | APR<br><i>DTM</i> | MODEL<br>TR200  | PAGE 2 OF 2 | SIZE<br>A  | DWG NO.<br>185B4240 |
| DR  | SP10076 | 09/10 |   |                   |   |             |  |                     |
| REV | ECN     | DATE  |   |                   |   |             |  |                     |