

DRAWING	REVISION	VERSION

UNLESS OTHERWISE SPECIFIED ALL DIMENSIONS ARE IN INCHES. TOLERANCE:

.X ± 0.1
 .XX ± 0.03
 .XXX ± 0.005

FINISH ✓

ANGLES ± 2.0° HOLE DIA = :

CONFORMS TO ASME Y14.5M-1994.

TRANE

THIS DRAWING IS PROPRIETARY AND SHALL NOT BE COPIED OR ITS CONTENTS DISCLOSED TO OUTSIDE PARTIES WITHOUT THE WRITTEN CONSENT OF TRANE

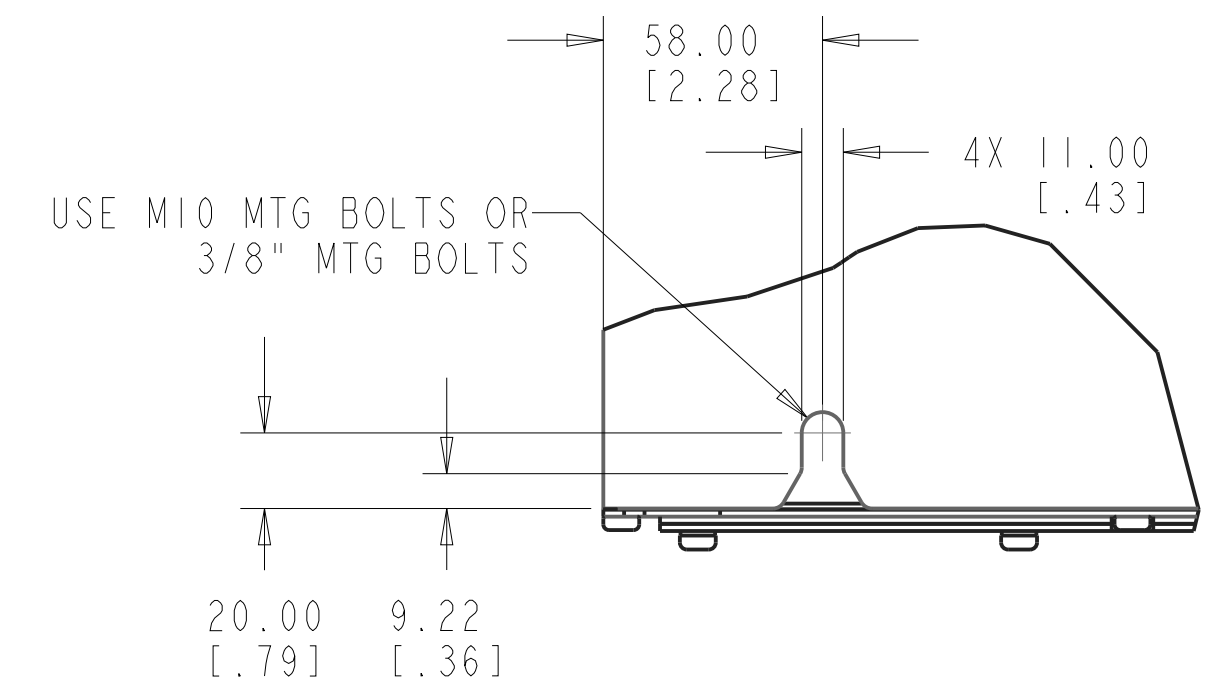
DRAWN BY: JMH ©TRANE DATE: 07/22/13

DO NOT SCALE PRINT

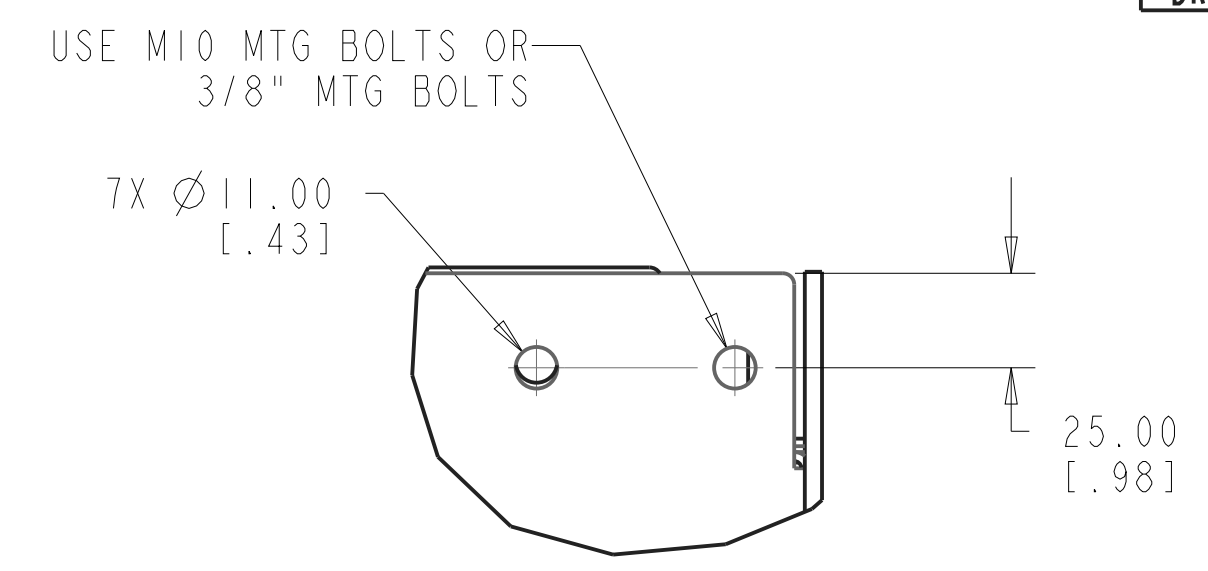
THIRD ANGLE PROJECTION

185B4688 SHEET 1 OF 3 REV

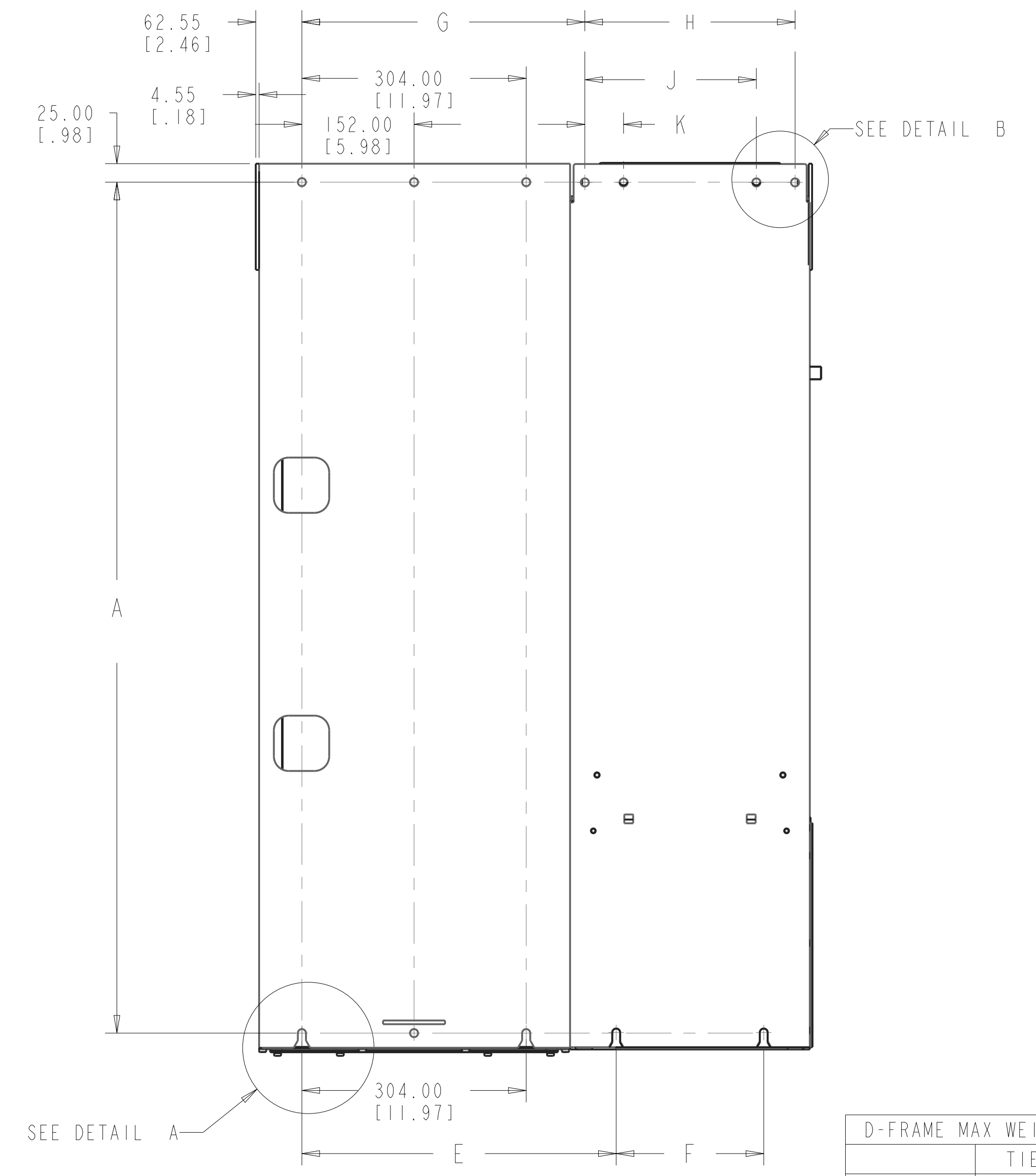
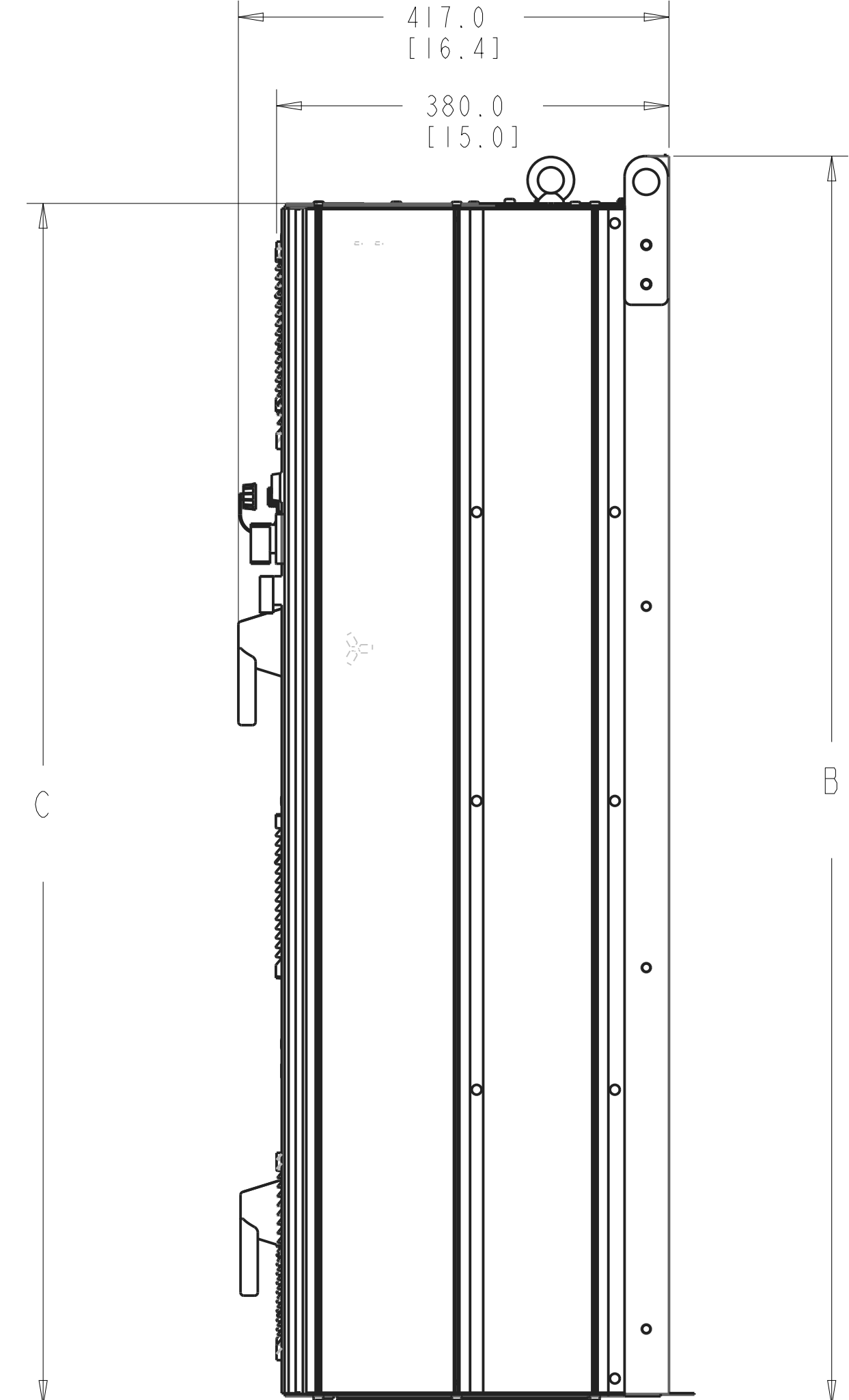
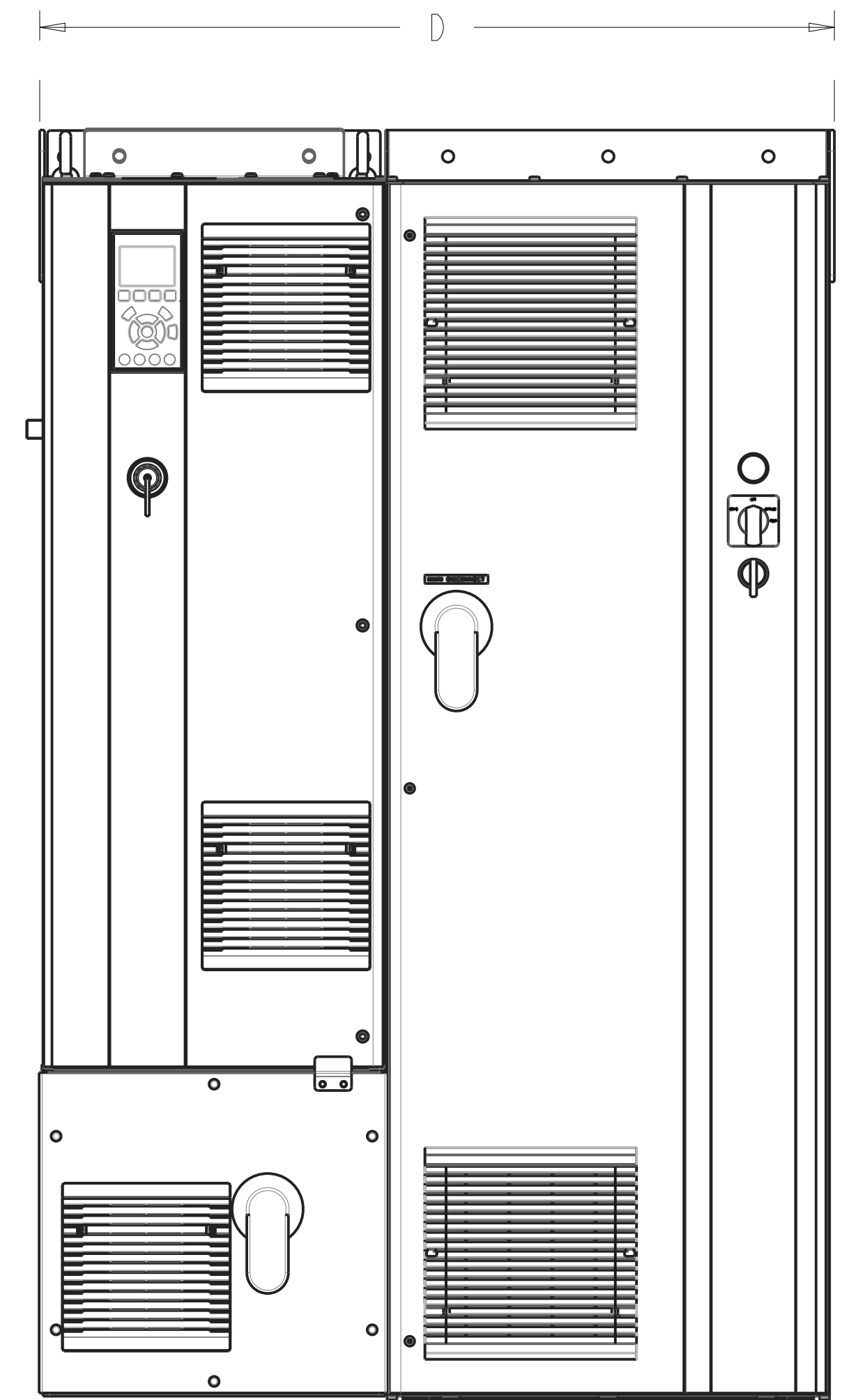
INSTALLATION DRAWING.D1.D2.TIER2.TIER3



DETAIL A
 LOWER MOUNTING HOLES
 SCALE 0.500



DETAIL B
 TOP MOUNTING HOLES
 SCALE 0.500



D-FRAME MAX WEIGHTS	
	TIER 2
D1 FRAME	420 lbs [190 kg]
D2 FRAME	630 lbs [286 kg]

- NOTES:
1. THIS ENCLOSURE CONFIGURATION IS USED FOR ALL OPTION COMBINATIONS EXCEPT BYPASS WITH DV/DT FILTER OR LINE REACTOR OR CONTACT MOTOR SELECT OR DUAL MOTOR.
 2. AT MINIMUM THE TWO OUTSIDE LIFTING POINTS ARE REQUIRED WHEN HANDLING THIS UNIT.

TIER 2 DIMENSIONS										
	A	B	C	D	E	F	G	H	J	K
D1 FRAME	1154.0 [45.4]	1209.9 [47.6]	1163.7 [45.8]	754.1 [29.7]	426.0 [16.8]	200.0 [7.9]	383.5 [15.1]	285.0 [11.2]	232.5 [9.2]	52.5 [2.1]
D2 FRAME	1534.5 [60.4]	1588.2 [62.53]	1542.8 [60.7]	850.6 [33.5]	438.0 [17.2]	271.0 [10.67]	386.5 [15.2]	374.0 [14.7]	327.0 [12.9]	47.0 [1.9]

DRAWING	REVISION	VERSION

UNLESS OTHERWISE SPECIFIED ALL DIMENSIONS ARE IN INCHES. TOLERANCE:

.X ± 0.1
 .XX ± 0.03
 .XXX ± 0.005

FINISH ✓

ANGLES ± 2.0° HOLE DIA = :

CONFORMS TO ASME Y14.5M-1994.

TRANE

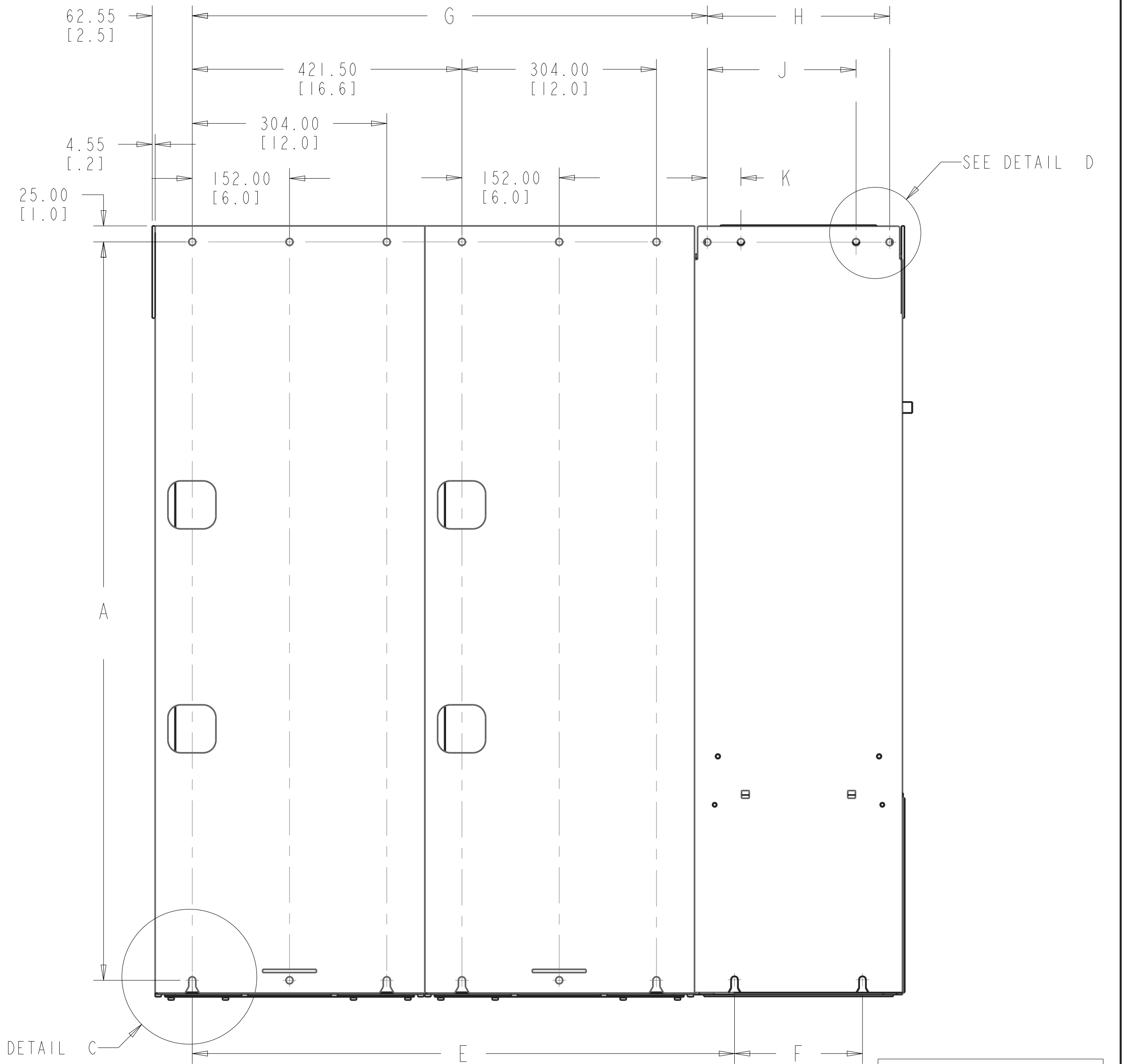
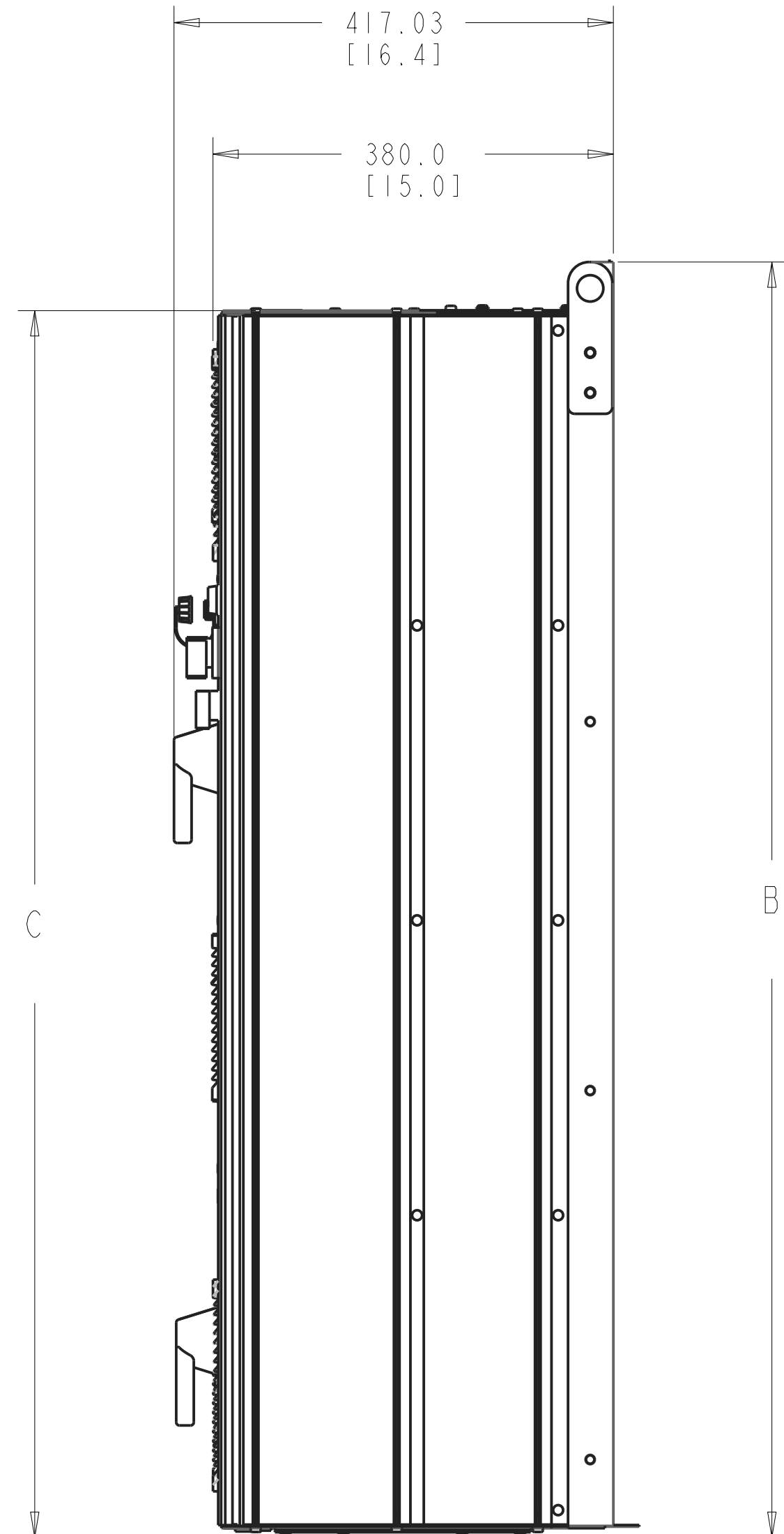
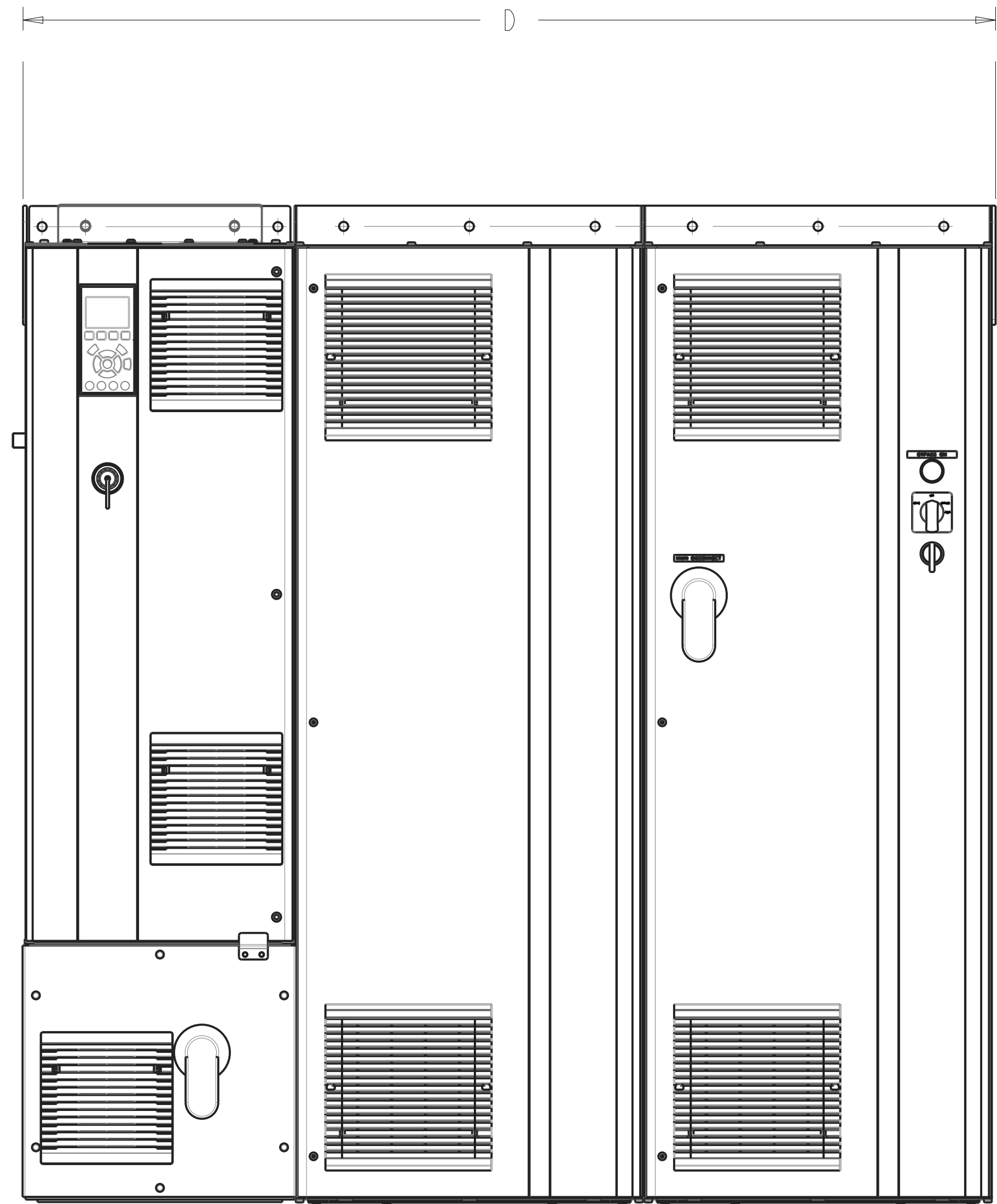
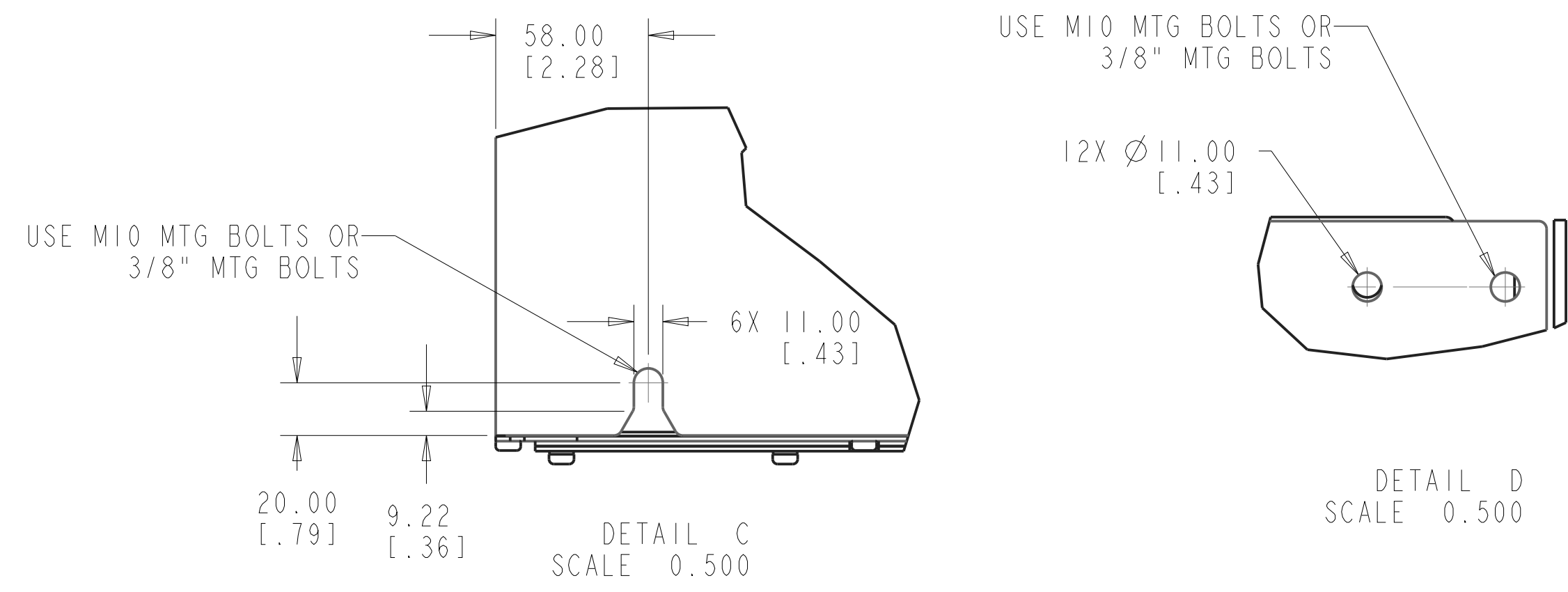
THIS DRAWING IS PROPRIETARY AND SHALL NOT BE COPIED OR ITS CONTENTS DISCLOSED TO OUTSIDE PARTIES WITHOUT THE WRITTEN CONSENT OF TRANE

DRAWN BY: JMH ©TRANE DATE: 07/22/13

DO NOT SCALE PRINT THIRD ANGLE PROJECTION

185B4688 SHEET 2 OF 3 REV

INSTALLATION DRAWING.D1.D2.TIER2.TIER3



NOTES:

1. THIS ENCLOSURE CONFIGURATION IS USED FOR ALL OPTION COMBINATIONS CONTAINING BYPASS WITH DV/DT FILTER OR LINE REACTOR OR CONTACT MOTOR SELECT OR DUAL MOTOR.
2. AT MINIMUM THE TWO OUTSIDE LIFTING POINTS ARE REQUIRED WHEN HANDLING THIS UNIT.

D-FRAME MAX WEIGHTS	
	TIER 3
D1 FRAME	585 lbs [265 kg]
D2 FRAME	1070 lbs [486 kg]

	TIER 3 DIMENSIONS									
	A	B	C	D	E	F	G	H	J	K
D1 FRAME	1154.0 [45.4]	1209.9 [47.6]	1163.7 [45.8]	1175.6 [46.3]	847.5 [33.4]	200.0 [7.9]	805.0 [31.7]	285.0 [11.2]	232.5 [9.2]	52.5 [2.1]
D2 FRAME	1534.5 [60.4]	1588.2 [62.53]	1542.8 [60.7]	1272.1 [50.1]	859.5 [33.8]	271.0 [10.67]	808.0 [31.8]	374.0 [14.7]	327.0 [12.9]	47.0 [1.9]

DRAWING	REVISION	VERSION

UNLESS OTHERWISE SPECIFIED ALL DIMENSIONS ARE IN INCHES. TOLERANCE:
.X = ± 0.1
.XX = ± 0.03
.XXX = ± 0.005
FINISH ✓
ANGLES = ± 2.0° HOLE DIA = :
CONFORMS TO ASME Y14.5M-1994.

TRANE
THIS DRAWING IS PROPRIETARY AND SHALL NOT BE COPIED OR ITS CONTENTS DISCLOSED TO OUTSIDE PARTIES WITHOUT THE WRITTEN CONSENT OF TRANE
DRAWN BY: JMH
DATE: 07/22/13
DO NOT SCALE PRINT
THIRD ANGLE PROJECTION

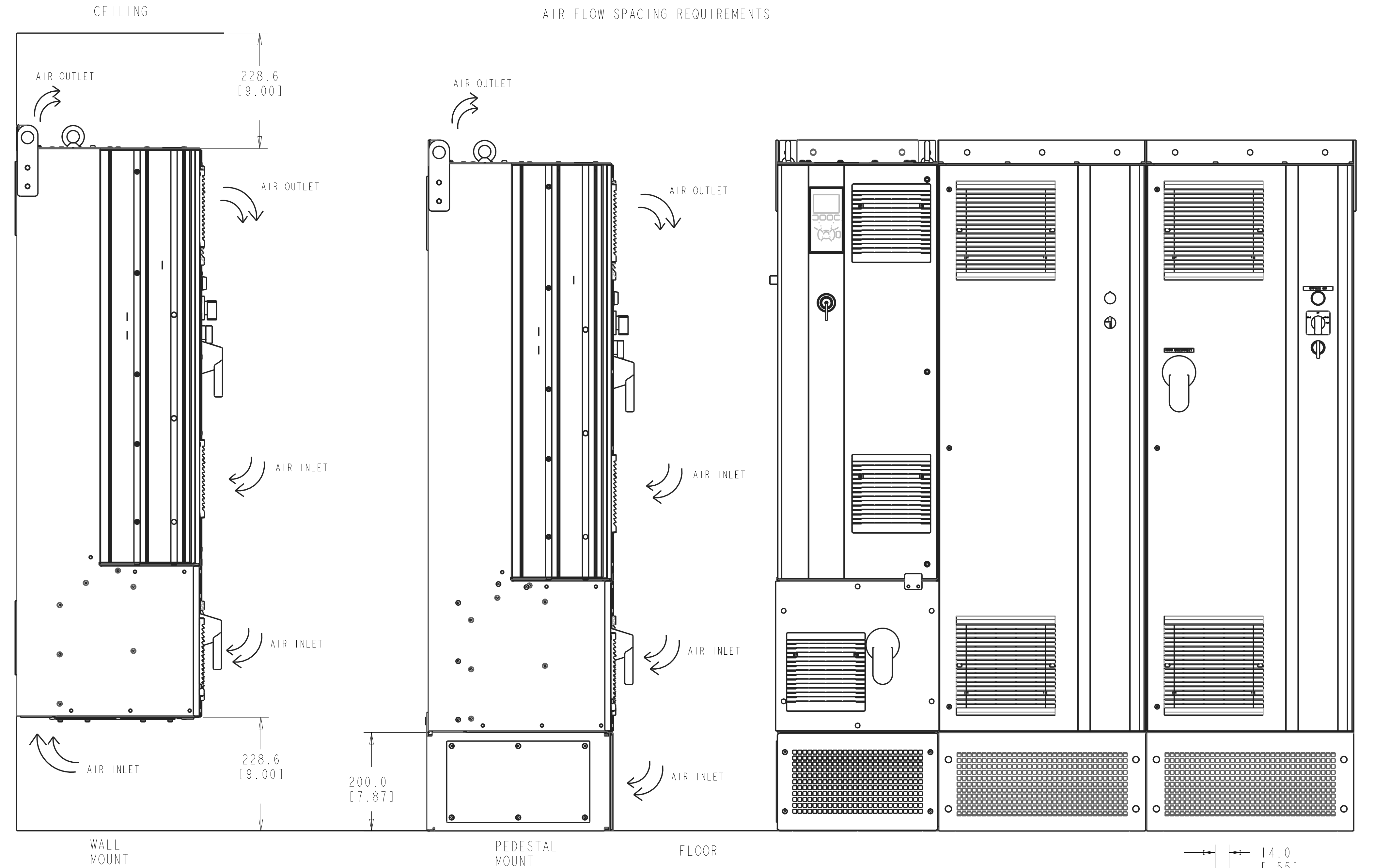
185B4688
SHEET 3 OF 3
REV
INSTALLATION DRAWING.D1.D2.TIER2.TIER3

TR 200 - 460V

HP	150	D1
KW	110	D1
HP	200	D1
KW	132	D1
HP	250	D2
KW	160	D2
HP	300	D2
KW	200	D2
HP	350	D2
KW	250	D2

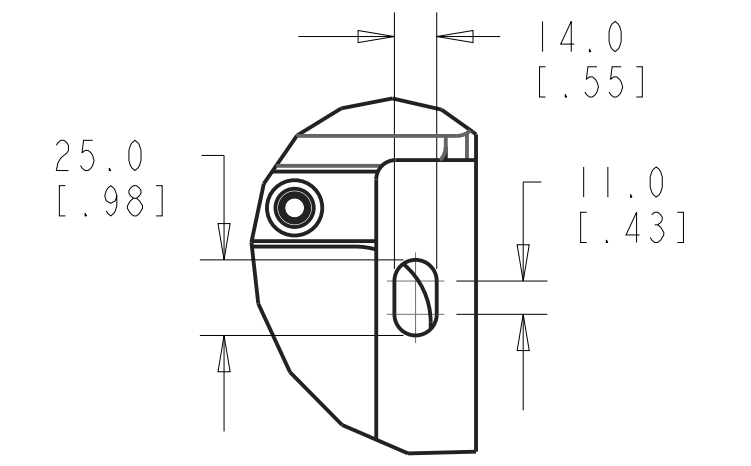
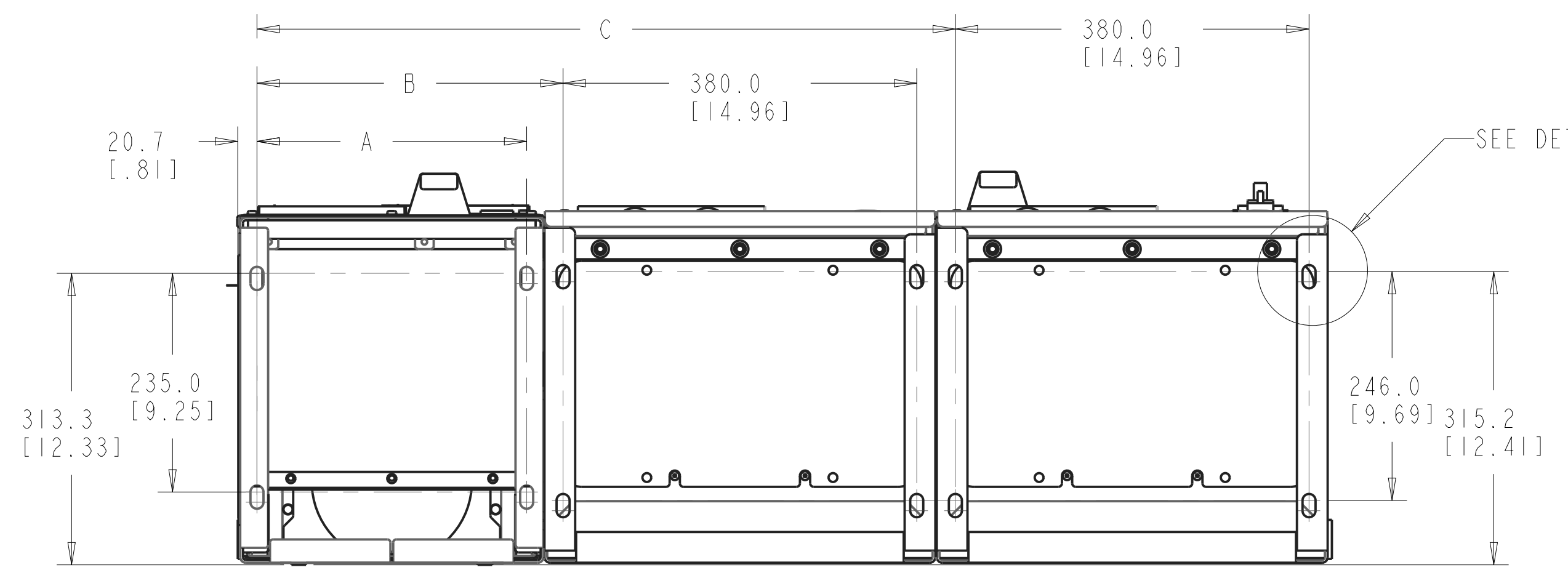
TR 200 - 600V

HP	150	D1
KW	110	D1
HP	200	D1
KW	132	D1
HP	250	D2
KW	160	D2
HP	300	D2
KW	200	D2
HP	350	D2
KW	250	D2
HP	400	D2
KW	315	D2



PEDESTAL KIT - REQUIRED ASSEMBLIES

	DRIVE PEDESTAL	QTY	TIER CABINET PEDESTAL	QTY	BOTTOM PLATE ASSEMBLY	QTY
D1 TIER2 (NEMA 1)	176F3452	1	176F1827	1	174N8724	1
D1 TIER2 (NEMA 12)	176F3452	1	176F1827	1	174N8674	1
D1 TIER3 (NEMA 1)	176F3452	1	176F1827	2	174N8724	1
D1 TIER3 (NEMA 12)	176F3452	1	176F1827	2	174N8674	1
D2 TIER2 (NEMA 1)	176F3539	1	176F1827	1	174N8729	1
D2 TIER2 (NEMA 12)	176F3539	1	176F1827	1	174N8717	1
D2 TIER3 (NEMA 1)	176F3539	1	176F1827	2	174N8729	1
D2 TIER3 (NEMA 12)	176F3539	1	176F1827	2	174N8717	1



PEDESTAL MOUNTING PATTERN

	A	B	C
D1 FRAME	289.8 [11.41]	328.9 [12.95]	750.4 [29.54]
D2 FRAME	384.8 [15.15]	423.9 [16.69]	845.4 [33.28]