



# KIT COVERS SCREW

100252



**Installation and servicing of Danfoss Turbocor® compressors by qualified and product trained personnel only. Follow these instructions and sound refrigeration/electrical/servicing practices relating to installation, commissioning, maintenance and service.**

<p>Consult the appropriate Danfoss Turbocor Compressors Inc. (DTC) Service Manual on <a href="http://turbocor.danfoss.com">turbocor.danfoss.com</a> for detailed service instructions.</p>	<p><b>Never power compressor without covers in place and secured.</b></p> <p><b>Removing the Mains Input Cover will expose you to a voltage hazard of up to 575V. Ensure the mains input power is off and locked out before removing cover.</b></p> <p><b>Before removing Top Cover, wait at least 20 minutes after isolating AC power to allow the high voltage capacitors to discharge.</b></p>	<p>Always wear appropriately rated safety equipment when working around equipment and/or components energized with high voltage.</p> <p><b>This equipment contains hazardous voltages that can cause serious injury or death.</b></p>	<p><b>Recover all refrigerant from compressor in accordance with local codes and ensure pressure is fully vented before the removal of refrigerant containing components.</b></p>
--	---	---	---

1 - Introduction:

COVERS SCREW Removal and Installation Instructions.

2 - Top Cover & Main Input Cover Screws Installation Instruction:

**Removal**

1. Isolate compressor power as described in Section "Electrical Isolation of the Compressor" of the Service Manual (M-SV-001).
2. Release the four (4) captive screws that secure the Mains Input Cover and remove the cover.
3. Using an appropriately rated volt meter, confirm that the AC voltage is isolated.
4. Wait at least 20 minutes for the DC bus capacitors to discharge.

**DANGER:** Do NOT touch any components when removing the Top Cover. This is particularly true for compressors with CE covers because they are coated on the outside for the express purpose of being conductive

5. Release the nine (9) captive screws that secure the Top Cover and remove the cover, taking particular care not to touch ANY components underneath.
6. Using an appropriately rated volt meter, check the DC bus bars for voltage level. If the voltage is above 5VDC, wait five (5) minutes and recheck until 5VDC or below is achieved.

7. Disconnect 3 phase mains input wiring.

### Installation

1. Ensure that no residue remains on the contact surfaces of Top Cover and casting sides.
2. Place the Top Cover and secure it with the nine (9) M5x15 screws according to the following sequence. Follow the sequence twice. The first time, only fasten screws half way down to allow for adjustments. Torque to 13 in.lb. on the second pass. Refer to Figure 1 (Top Cover Torque Sequence).

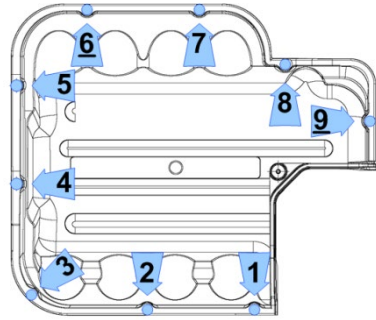


Figure 1 – Top Cover Torque Sequence

3. Ensure that no residue remains on the contact surfaces of the Mains Input Cover and casting sides.
4. Place the Mains Input Cover and secure it with the four (4) M5x15 screws. Tighten according to Figure 2 (Mains Input Cover Torque Sequence).

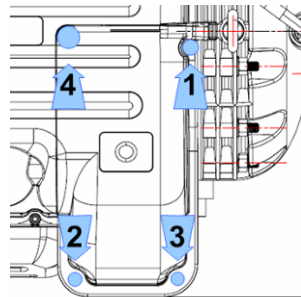


Figure 2 – Mains Input Cover Torque Sequence

5. Follow the sequence twice. The first time, only fasten screws to half way down to allow for adjustment. Torque to 13 in.lb. on the second pass. Fasten the # 4 screw only once and use caution as to not overtighten this screw.
6. Reconnect power.

---

### 3 - Service Side Cover Screws Installation Instruction:

---

#### Removal

1. Isolate compressor power as described in Section "Electrical Isolation of the Compressor" of the Service Manual (M-SV-001).
2. Release the four (4) captive screws that secure the Service Side Cover and remove the cover.

#### Installation

1. Ensure that no residue remains on the contact surfaces of cover and casting sides.
2. Install the new Service Side Cover and secure it with the (4) new captive screws. Tighten the screws according to the following sequence in Figure 3 (Service Side Cover Torque Sequence).

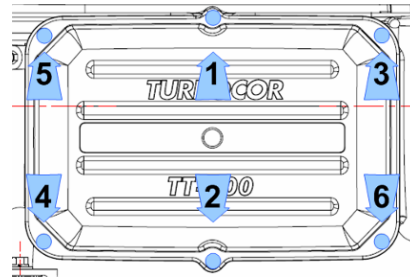


Figure 3 –Service Side Cover Torque Sequence

3. Follow the sequence twice. The first time, only fasten screws to half way down to allow adjustments. Torque to 1.5 Nm (13 in.lb.) on the final pass.

---

4 - Capacitor Side Cover Screws Installation Instruction:

---

**Removal**

1. Isolate compressor power as described in Section “Electrical Isolation of the Compressor” of the Service Manual (M-SV-001).
2. Release the six (6) captive screws that secure the Capacitor Cover and remove the cover.
3. Using an appropriately rated volt meter, confirm that the AC voltage is isolated.
4. Wait at least 20 minutes for the DC bus capacitors to discharge.
5. Using an appropriately rated volt meter, check the DC bus bars for voltage level. If the voltage is above 5VDC, wait five (5) minutes and recheck until 5VDC or below is achieved.

**Installation**

1. Place the Capacitor Cover and secure it with the long screw (M5 x 20) and flat washer in position number three (3) as shown in the following figure. Use five (5) remaining screws to secure the cover. Fasten according to the sequence in Figure 4 (Capacitor Cover Torque Sequence). Follow the sequence twice.

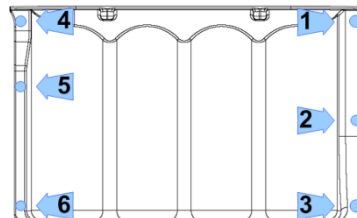





Figure 4 – Capacitor Cover Torque Sequence

5 - Kit Contents

Kit numbers	Compressor models
100252	ALL TT MODELS & TG310

QTY	Part(s) Description	Picture(s)
1	WASHER M5 FLAT	
1	SCREW M5X20 TORX PAN HEAD	
24	SCREW DOUBLE SEMS M5X15 TORX PAN HEAD DBL SEMS	

Danfoss can accept no responsibility for possible errors in catalogues, brochures and other printed material. Danfoss reserves the right to alter its products without notice. This also applies to products already on order provided that such alterations can be made without subsequential changes being necessary in specifications already agreed.

ENGINEERING  
TOMORROW



All trademarks in this material are property of the respective companies. Danfoss and the Danfoss logotype are trademarks of Danfoss A/S. All rights reserved.