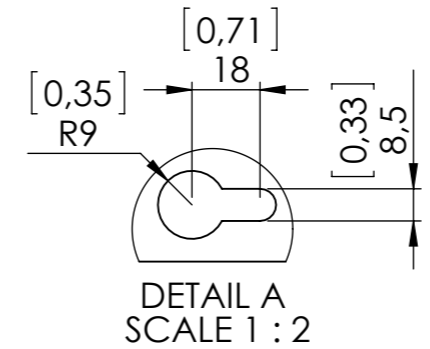


Resistor connection:
 Marked RB1 / RB2
 IEC: Cu 2.5- 50mm²; Al:6-50mm²/ 750V
 UL: AWG 6 - 1/0 / 600V
 Wire stripping: 23mm(0.9 in)
 Torque: 10 Nm(88.51 lb-in)

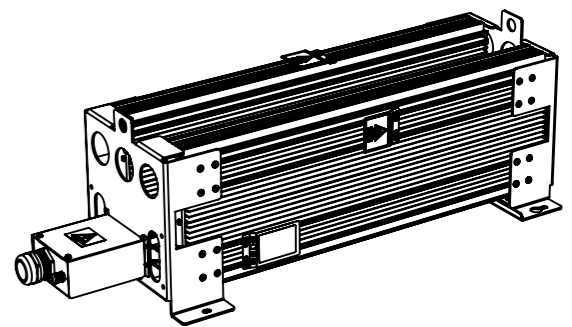
Thermo switch connection:
 Marked: T1/T2
 Type: PHOENIX G5/2 with screw connection.
 IEC: 0, 2-4 mm² / 500V
 UL: AWG 24 -12 / 300V
 Wire stripping: 8 mm(0.31 in)
 Torque: 0.7 Nm (6.2 lb-in)

For temperature switch cable:
 Clamping range: 3.5-7.0 mm (0.14-0.28 in)
 Size Wrench (SW): 16mm (0.63 in)

For resistor cable:
 Cable gland with internal connection for braid
 Clamping range: 19 - 28 mm
 Size Wrench (SW): 45 mm(1.78 in)



Name plate:
VLT® MCE101 Brake Resistor
www.danfoss.com
 T/C: MCE101xxxxPxxxxE21TAW
 P/N: 175Uxxxx S/N: 456001-443
 xxxR±10% Average power: xxxW
 xxxW/xxxxW@ 10%/40% duty cycle of 30s
 NEMA 1/IP21 Tamb = 40°C xxkg
 175Uxxxx456001-443
 CBT-Vxxx GHT 929 xxxR KT
 Zxxxxxxx929 Pr.no:123456
 MADE IN DENMARK
 CE



Danfoss code	Typecode	Ohm	L±2 mm	L±0.08 in	L1±2 mm	L1±0.04 in	Weight kg	Center of mass mm		
								X	Y	Z
175U3134	MCE101A105RP4K20E21TAW	105	660	25.98	630	24.80	29	304	135	128

Danfoss A/S Power Electronics Division Ulsnæs 1, 6300 Graasten Denmark	Weight (g)	Date	Creator:	Approved:	Scale
	-	24.04.2015	HEE		1:5
MCE 101 Brake Resistor xxR ± 10% 929 IP 21/20 175C0639	Tolerance:	DS/ISO 2768-cL	File: 929CBT-VxxxGHT2		
	No.:	Last Revision:	Rev Date:	By:	Paper size:
					A3
Any amendment must be confirmed by DANOTHERM ELECTRIC A/S					
Material:	Drawing No.:		Sheet:		
Path: T:\sw\kute\KUTETEGN\	929CBT-VxxxGHT2		1 of 1		

This drawing is the property of DANOTHERM ELECTRIC A/S and must not be copied without their consent.