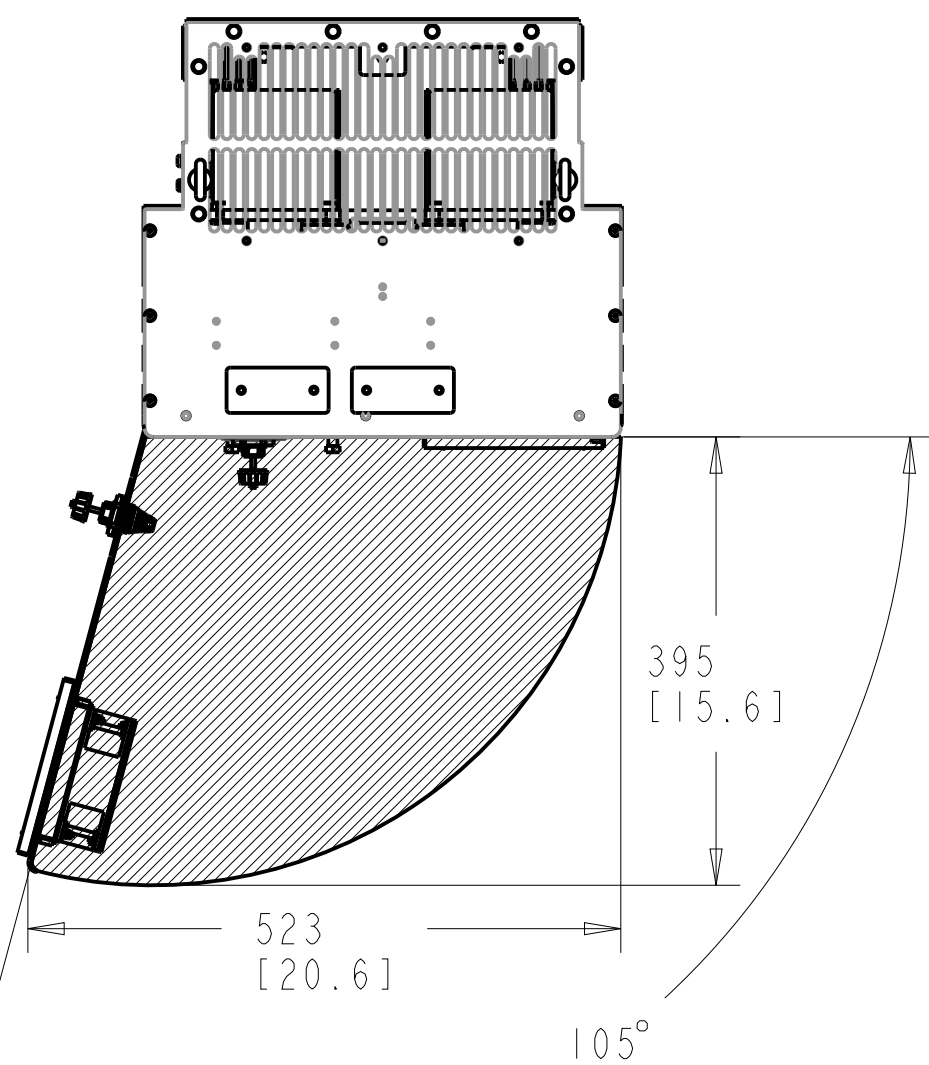
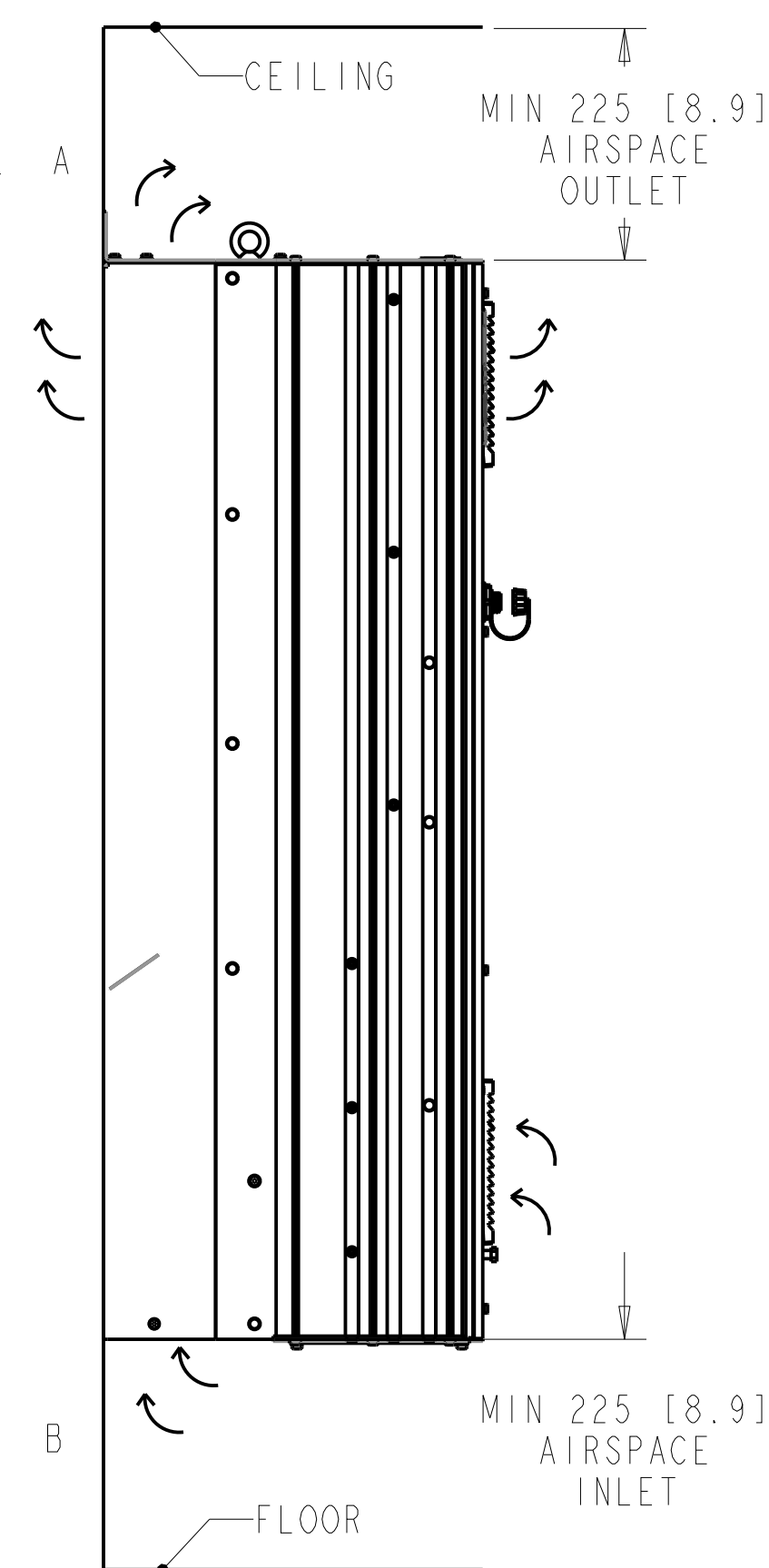
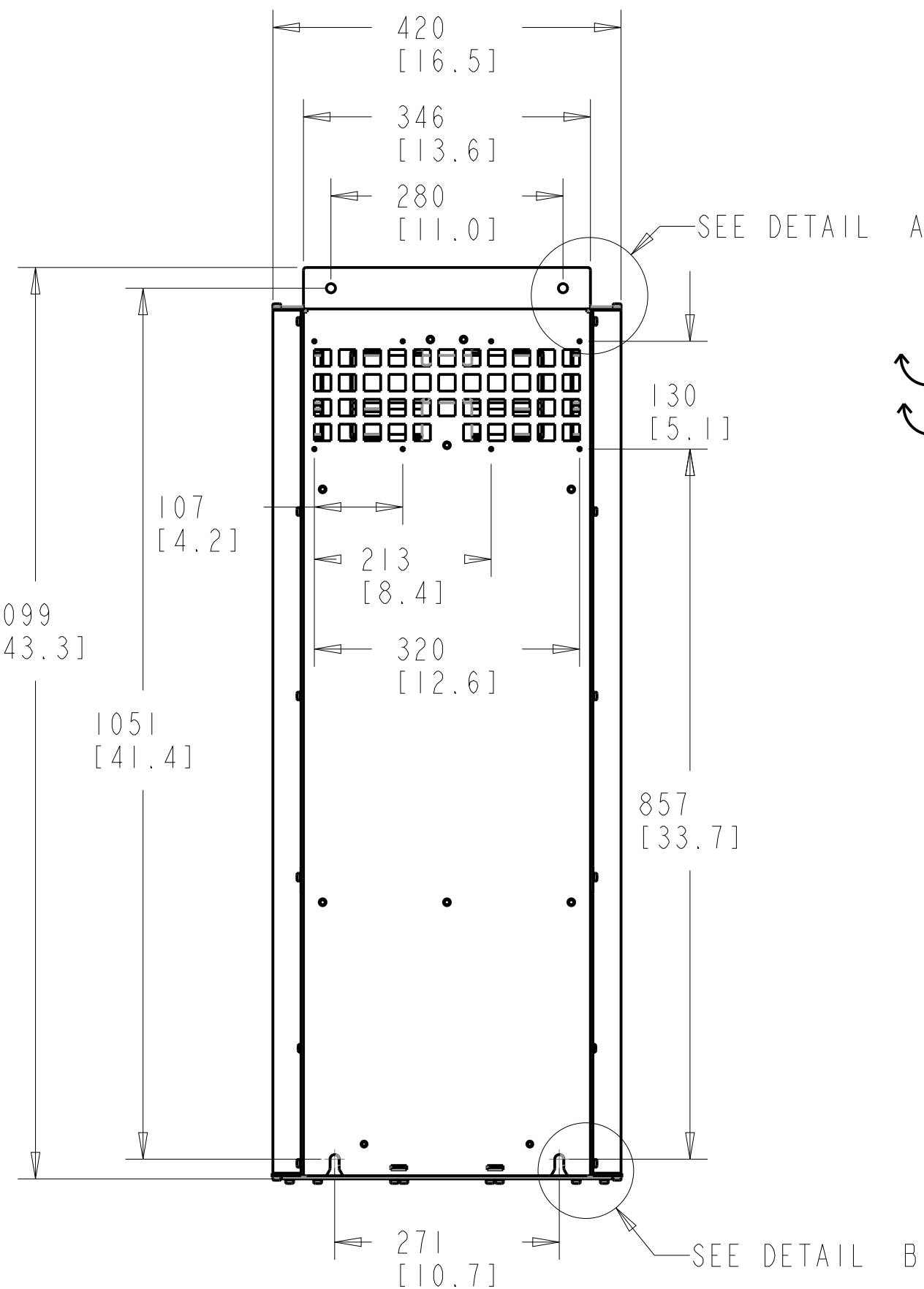
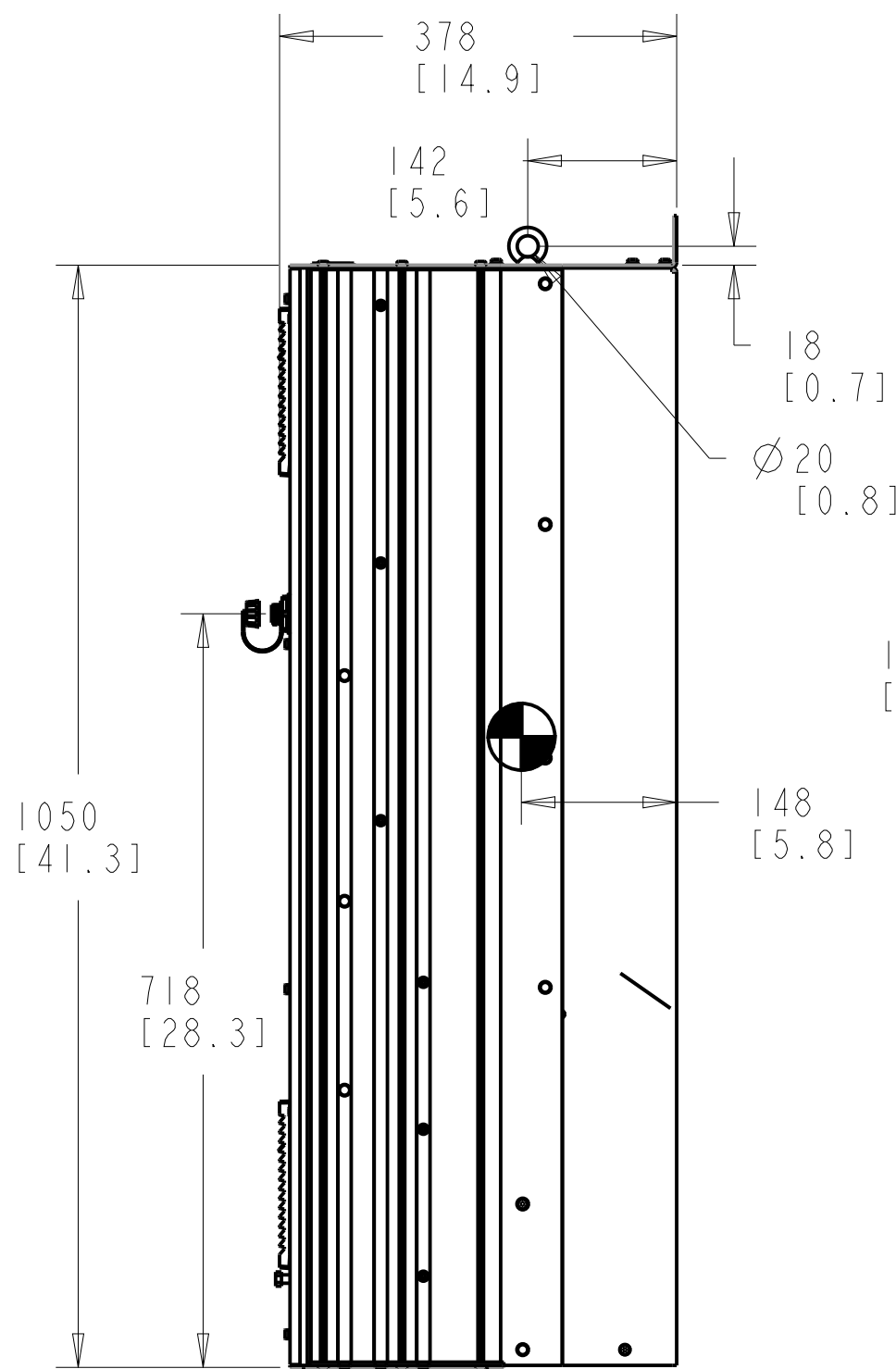
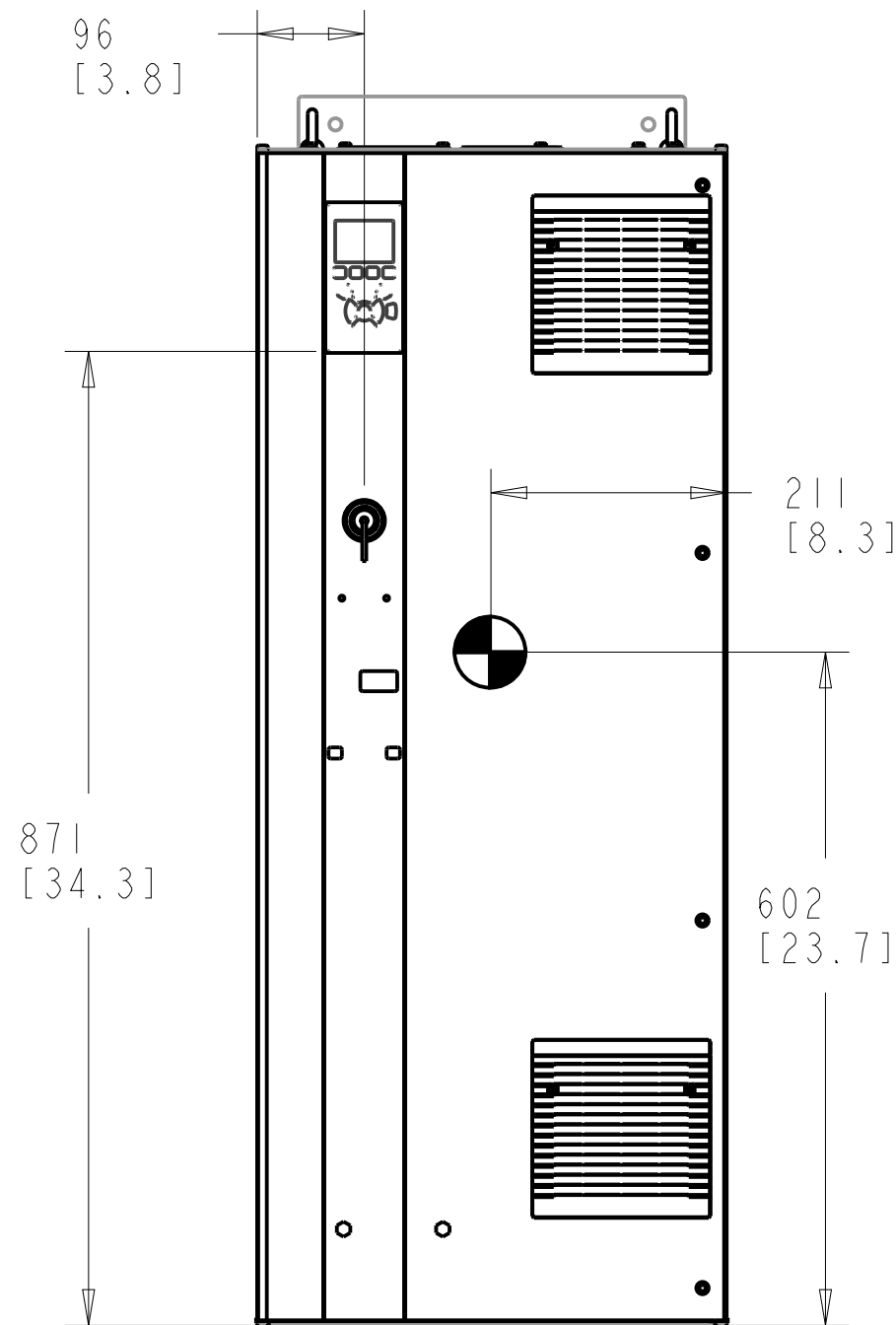
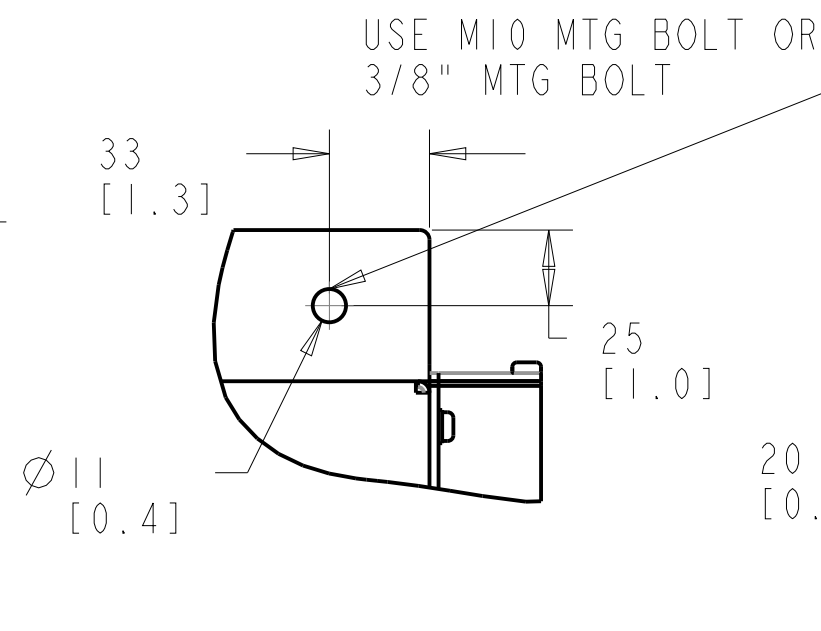


- NOTICE -

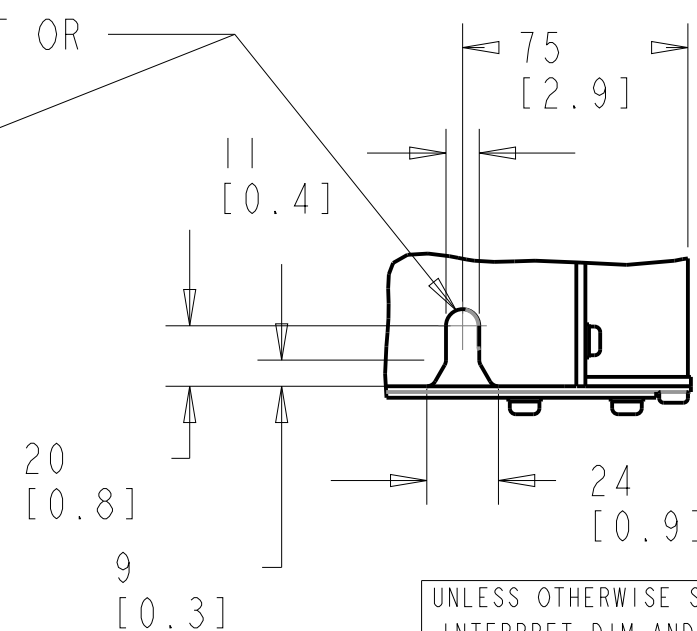
THIS DOCUMENT CONTAINS PROPRIETARY INFORMATION OF DANFOSS DRIVES. IT IS LOANED BY DANFOSS DRIVES SUBJECT TO THE CONDITIONS THAT IT AND THE INFORMATION EMBODIED THEREIN SHALL BE USED ONLY FOR RECORD AND REFERENCE PURPOSES. SHALL NOT BE USED OR CAUSED TO BE USED IN ANY WAY PREJUDICIAL TO THE INTERESTS OF DANFOSS DRIVES. SHALL NOT BE REPRODUCED OR COPIED IN WHOLE OR IN PART OR DISCLOSED TO ANYONE WITHOUT THE DIRECT WRITTEN PERMISSION OF DANFOSS DRIVES, AND SHALL BE RETURNED UPON REQUEST.



DETAIL A



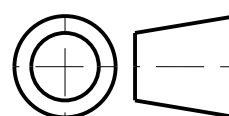
DETAIL B



1. MAX AIRFLOW (BACKCHANNEL) - 14 M³ / MIN (500 CFM)
2. MAX AIRFLOW (CABINET) - 3.4 M³ / MIN (120 CFM)
3. MAX WEIGHT = 125 KG (275 LBS)
4. CENTER OF GRAVITY:
APPROXIMATE LOCATION ONLY, LOCATION MAY VARY BASED ON POWER RATING AND OPTIONS ORDERED.

UNLESS OTHERWISE SPECIFIED
INTERPRET DIM. AND TOL. PER
ASME Y14.5M-1994

.X±0.4 .XX±0.2 ≤±0.5
DIM. ARE IN MILLIMETERS
WEIGHTS ARE IN KILOGRAMS
THIRD ANGLE PROJECTION



PROPERTIES

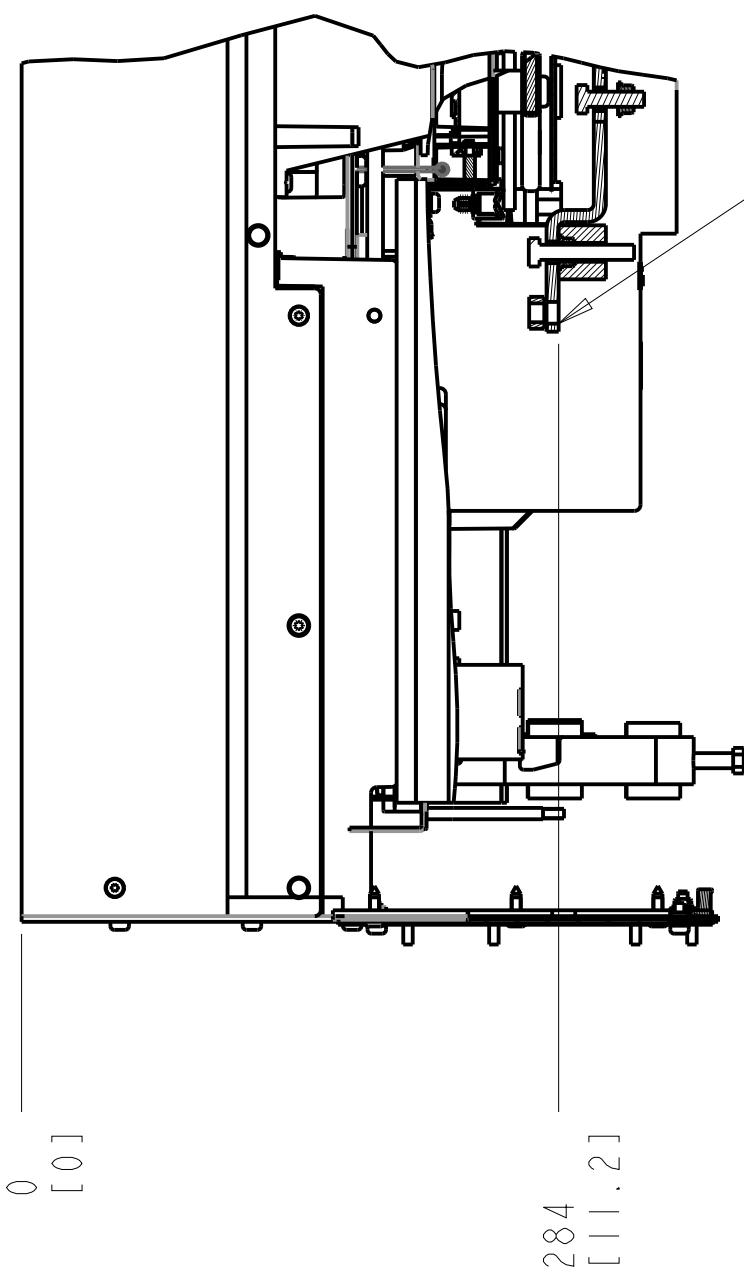
MATERIAL	N/A	
FINISH	N/A	
THICKNESS	N/A	
EST. WEIGHT	125	
APPROVALS	INITIALS	DATE
DRAWN	CCN	06/16/11
CHECKED		
ENGR		

TITLE

4401 N. BELL SCHOOL RD. LOVES PARK, ILLINOIS 61111 USA (815) 639-8600 FAX (815) 639-8000		
INSTALLATION DRAWING, D2H, IP21/54		
SIZE C	MODEL	REV 003
SCALE 0.150	DRAWING NO. 177R0375	SHEET 1 OF 3

SECTION A-A
MAINS TERMINALS

SECTION B-B
MOTOR TERMINALS



MAINS TERMINAL

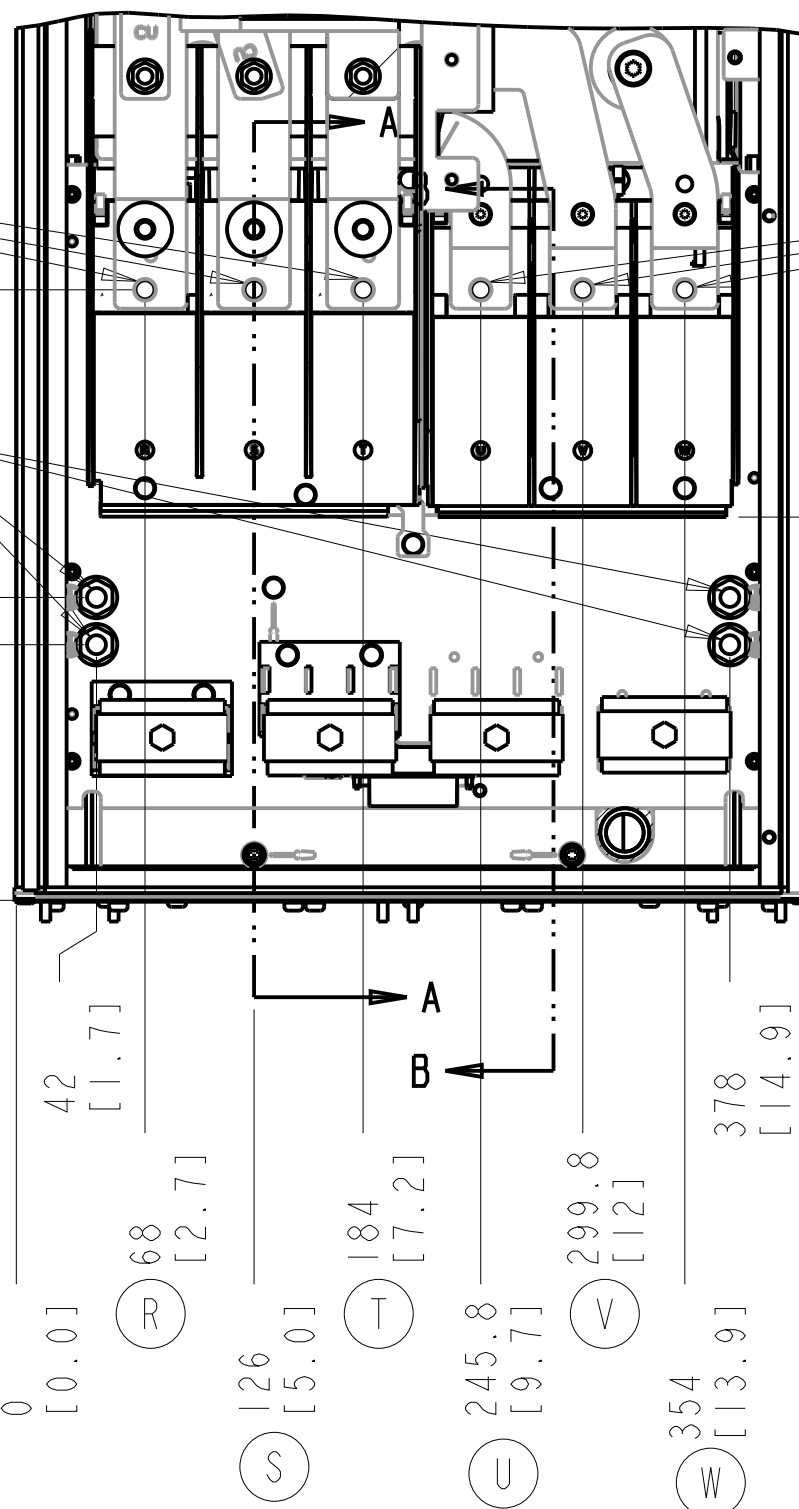
323 [12.7]

4X M10X20 STUD WITH NUT

2X GROUND 160 [6.3]

2X GROUND 135 [5.3]

0 [0.0]



MOTOR TERMINAL

203 [8.0]

42 [1.7]

68 [2.7] (R)

126 [5.0] (S)

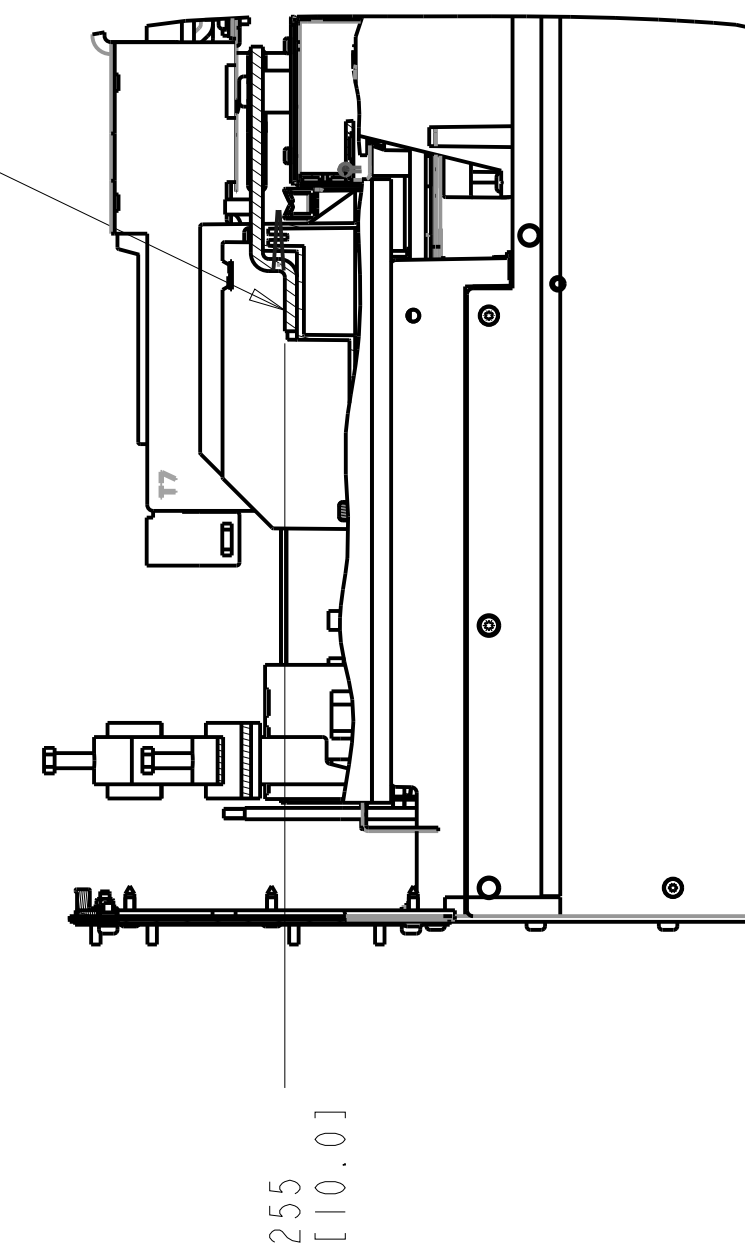
184 [7.2] (T)

245.8 [9.7] (U)

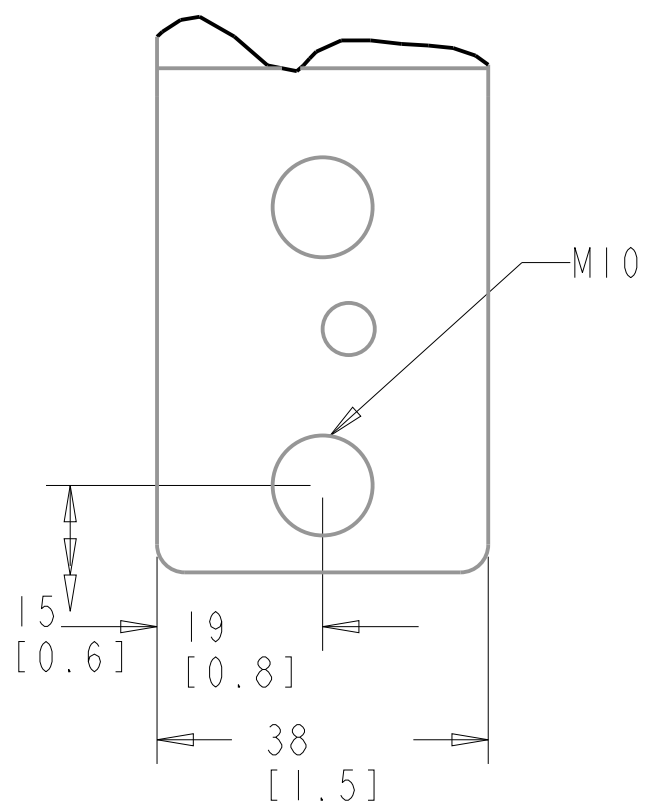
299.8 [12] (V)

354 [13.9] (W)

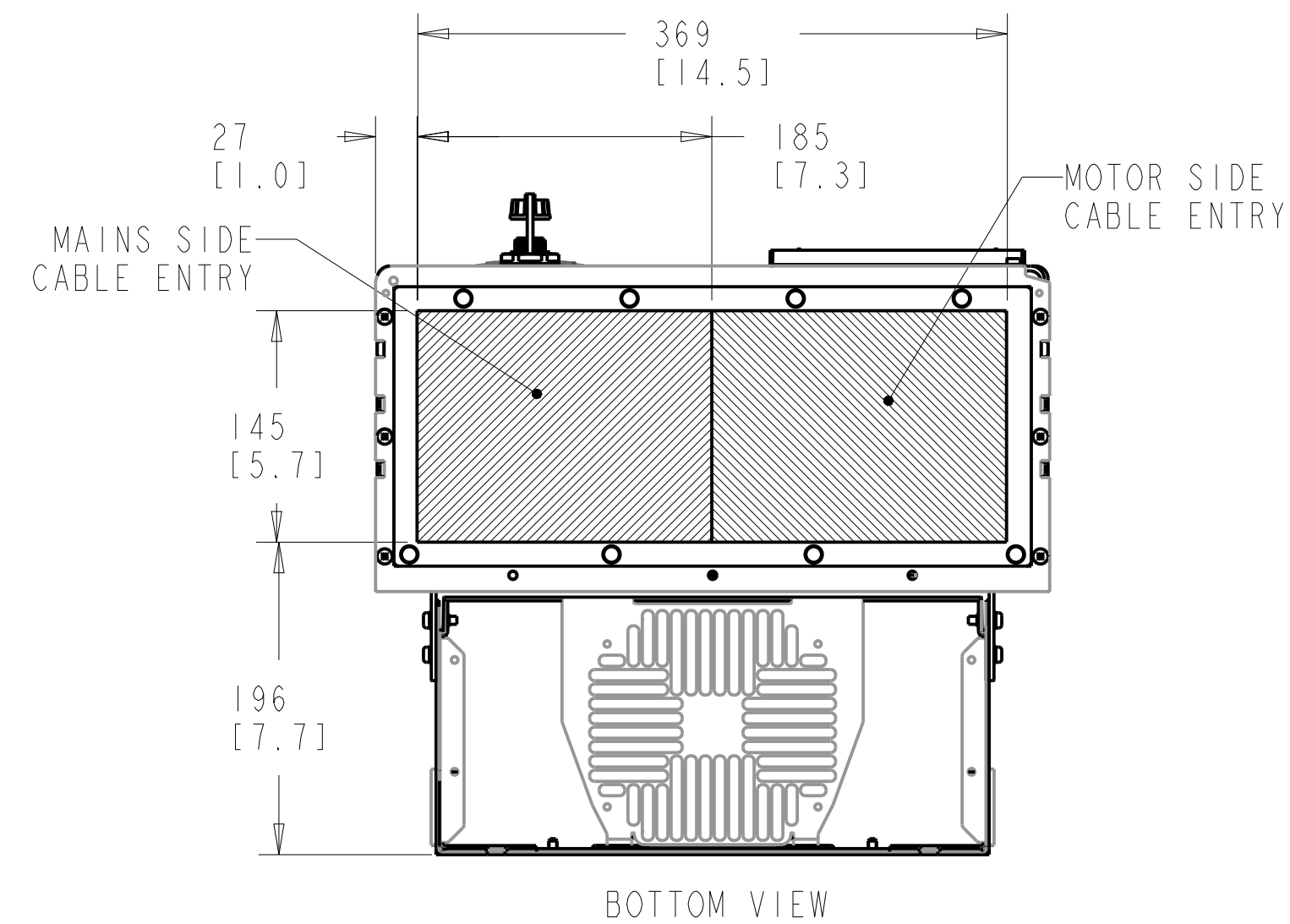
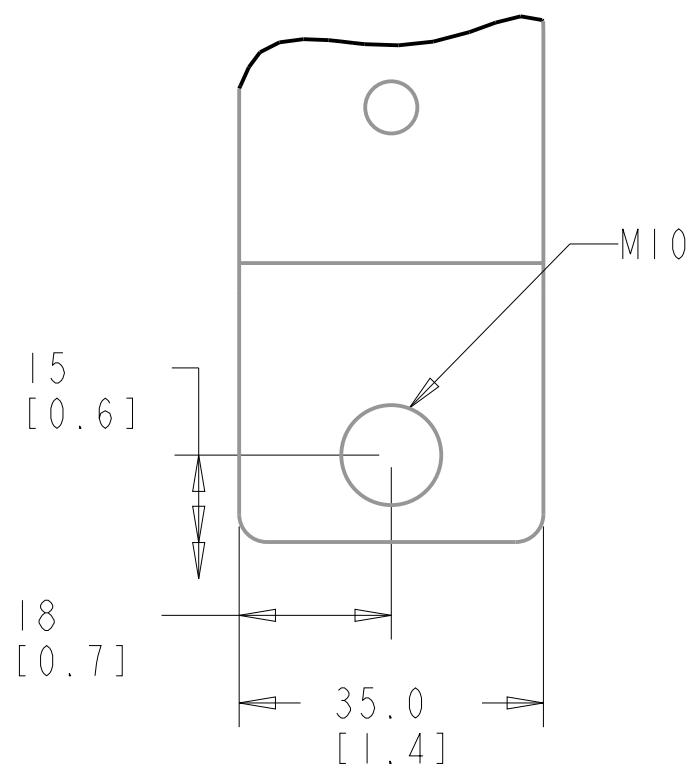
378 [14.9]



MAINS TERMINAL



MOTOR TERMINAL



27 [1.0]

MAINS SIDE CABLE ENTRY

145 [5.7]

196 [7.7]

369 [14.5]

BOTTOM VIEW

MOTOR SIDE CABLE ENTRY

185 [7.3]

NOTES:

1. PLACE CABLES THROUGH MARKED AREAS
2. 185MM² (400 MCM) MAX WIRE SIZE

TITLE INSTALLATION DRAWING, D2H, IP21/54		
SIZE C	MODEL	REV 003
SCALE 0.250	DRAWING NO. 177R0375	SHEET 2 OF 3

THE TABLES BELOW MAY BE USED TO CONFIRM THE CORRECT FRAME SIZE AND DRAWING FOR A SPECIFIC DRIVE RATING (POWER AND VOLTAGE). THIS DRAWING IS FOR D2H FRAMES, THE TABLES BELOW IDENTIFY WHICH DRIVES ARE REPRESENTED BY THIS DRAWING.

THE TABLE BELOW CAN BE USED TO DETERMINE THE FRAME SIZE IF THE SPECIFIC MODEL/TYPECODE IS KNOWN.

KW RATED DRIVES						
KW HIGH OVERLOAD	132	160	200	250	315	315
KW NORMAL OVERLOAD	160	200	250	315	355	400
400V		D2H	D2H	D2H		
500V			D2H	D2H	D2H	
525V	D2H	D2H	D2H	D2H		
690V		D2H	D2H	D2H		D2H

HORSEPOWER RATED DRIVES					
HP HIGH OVERLOAD	200	250	300	350	350
HP NORMAL OVERLOAD	250	300	350	400	450
460V		D2H	D2H		D2H
575V	D2H	D2H	D2H	D2H	

PLATFORM	VOLTAGE	MODEL/TYPECODE	FRAME(IP21/IP54)
HVAC	T4	FC-102N200T4	D2H
		FC-102N250T4	
		FC-102N315T4	
	T7	FC-102N200T7	
		FC-102N250T7	
		FC-102N315T7	
AQUA	T4	FC-202N200T4	
		FC-202N250T4	
		FC-202N315T4	
	T7	FC-202N200T7	
		FC-202N250T7	
		FC-202N315T7	
		FC-202N400T7	
AUTOMATION	T5	FC-302N160T5	
		FC-302N200T5	
		FC-302N250T5	
	T7	FC-302N160T7	
		FC-302N200T7	
		FC-302N250T7	
		FC-302N315T7	

TITLE			
INSTALLATION DRAWING, D2H, IP21/54			
SIZE	MODEL	REV	
C		003	
SCALE	DRAWING NO.	SHEET	
0.150	177R0375	3 OF 3	