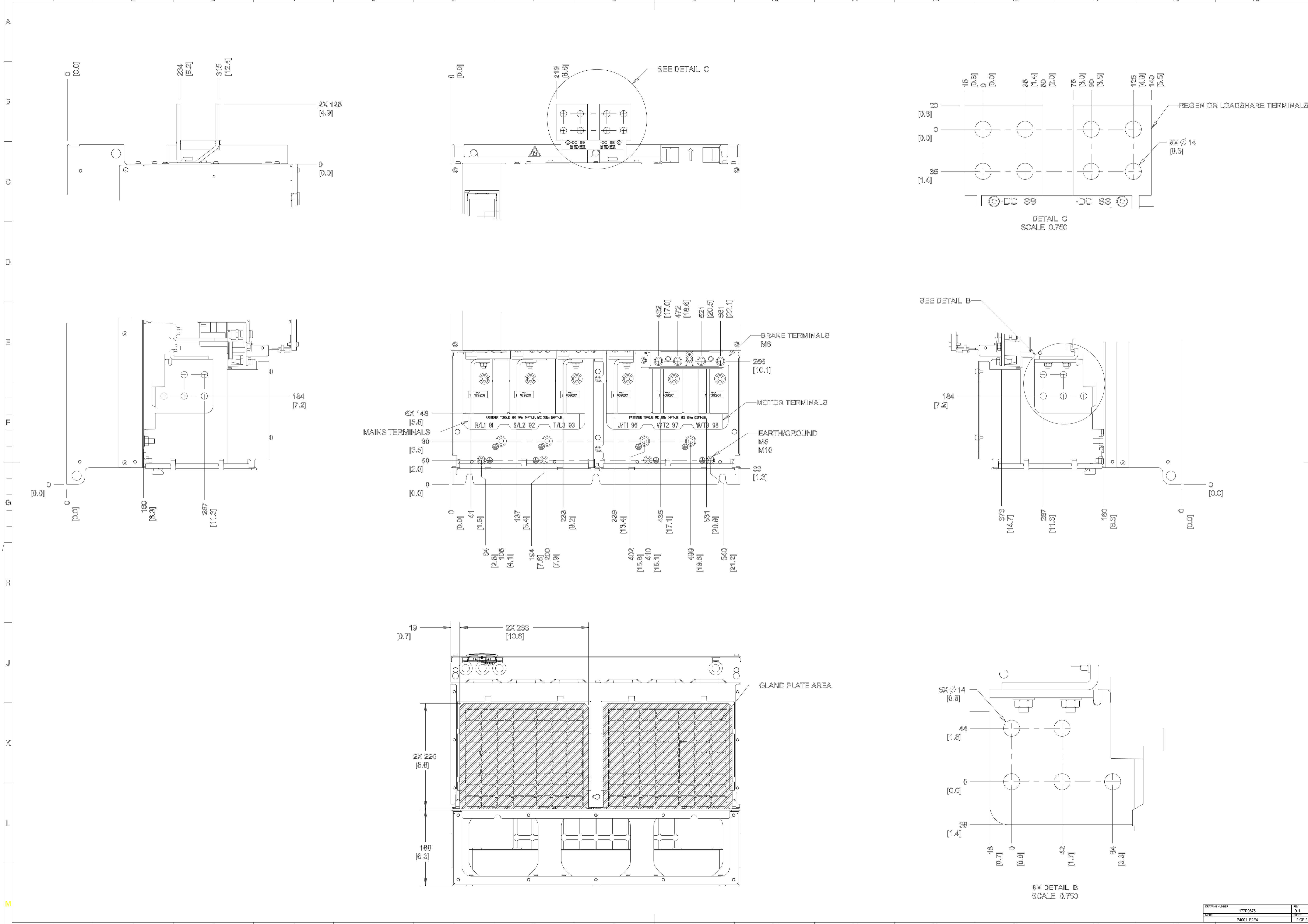


NOTES:  
1. FOR FASTENER TORQUES, REFER TO 175R5600 CLASS A UNLESS OTHERWISE SPECIFIED.

- ⊕ CRITICAL CHARACTERISTICS
- ▽ KEY CHARACTERISTICS
- INSPECTION

MUST COMPLY TO ROHS DIRECTIVE 2011/65/EU

UNLESS OTHERWISE SPECIFIED INTERPRET DIM & TOL PER ASME Y14.5M-1994 ALL DIMENSIONS ARE IN MILLIMETERS XX: 1.0 XXL: 0.50 ± 1.0		THIRD ANGLE PROJECTION	SCALE	SIZE	MATERIAL
PDM CONTROLLED DRAWING NOT VALID WITHOUT FROZEN DATE IN ID STAMP			0.175	A1	
CHANGED					
DESIGNED	Danfoss 01/25/2017				
CHECKED					
CONFIDENTIAL: PROPERTY OF DANFOSS A/S NØRDBØRG, DENMARK. NOT TO BE HANDED OVER TO BE COPIED OR BE USED BY A THIRD PARTY. TWO OR THREE DIMENSIONAL REPRODUCTION OF CONTENTS TO BE AUTHORIZED BY DANFOSS A/S.		DESCRIPTION	MCA0, FC, E4H, IP20, Options		
		DRAWING NUMBER	177R0675	REV	0.1
		MODEL	P4001_EZE4	SHEET	1 OF 2



DRAWING NUMBER	177R0675	REV	0.1
MODEL	P4001 EZE4	DATE	2011
		SHEET	2 OF 2