

4

3

2

1

D

D

C

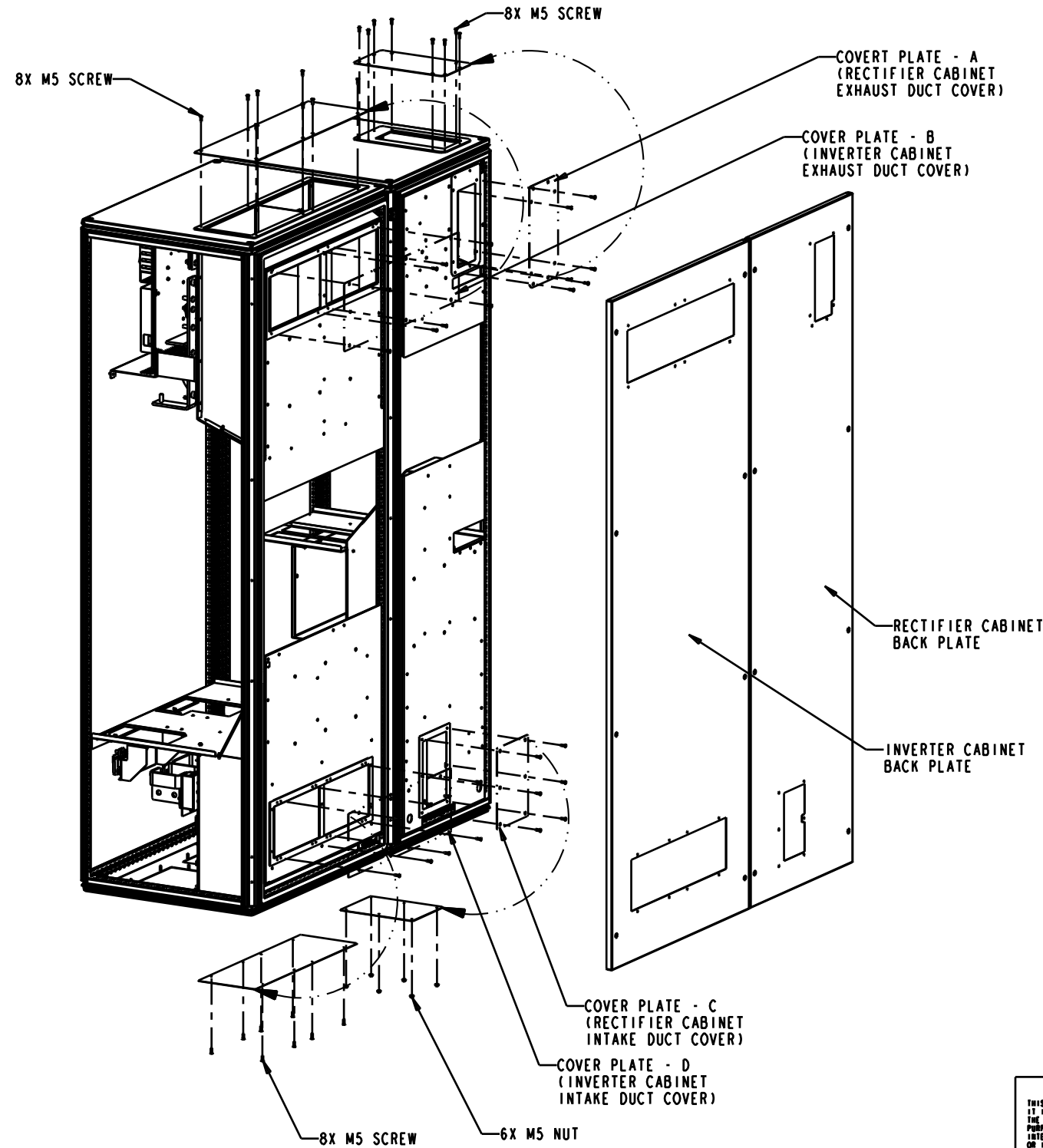
C

B

B

A

A



STEPS:

1. REMOVE BOTH CABINET BACK PLATE
2. REMOVE COVER PLATE A,B,C & D
3. INSTALLED COVER PLATE REMOVED IN STEP 2 TO BLOCK TOP AND BOTTOM OPENING USING THE SCREW REMOVED DURING STEP 2. GASKET REQUIRED ARE ALREADY PROVIDED ON BOTH TOP AND BOTTOM. (NOTE: TO MOUNT RECTIFIER BOTTOM PLATE 6X M5 NUT WOULD BE NEEDED)
4. MAKE CUTOUT ON CABINET BACKPLATE AS SHOWN ON SHEET 2.
5. RE-INSTALL BOTH BACK PLATE AND ATTACH DUCTS THROUGH HOLES CUT INTO BACKPLATE USING LONGER M5 SCREWS.

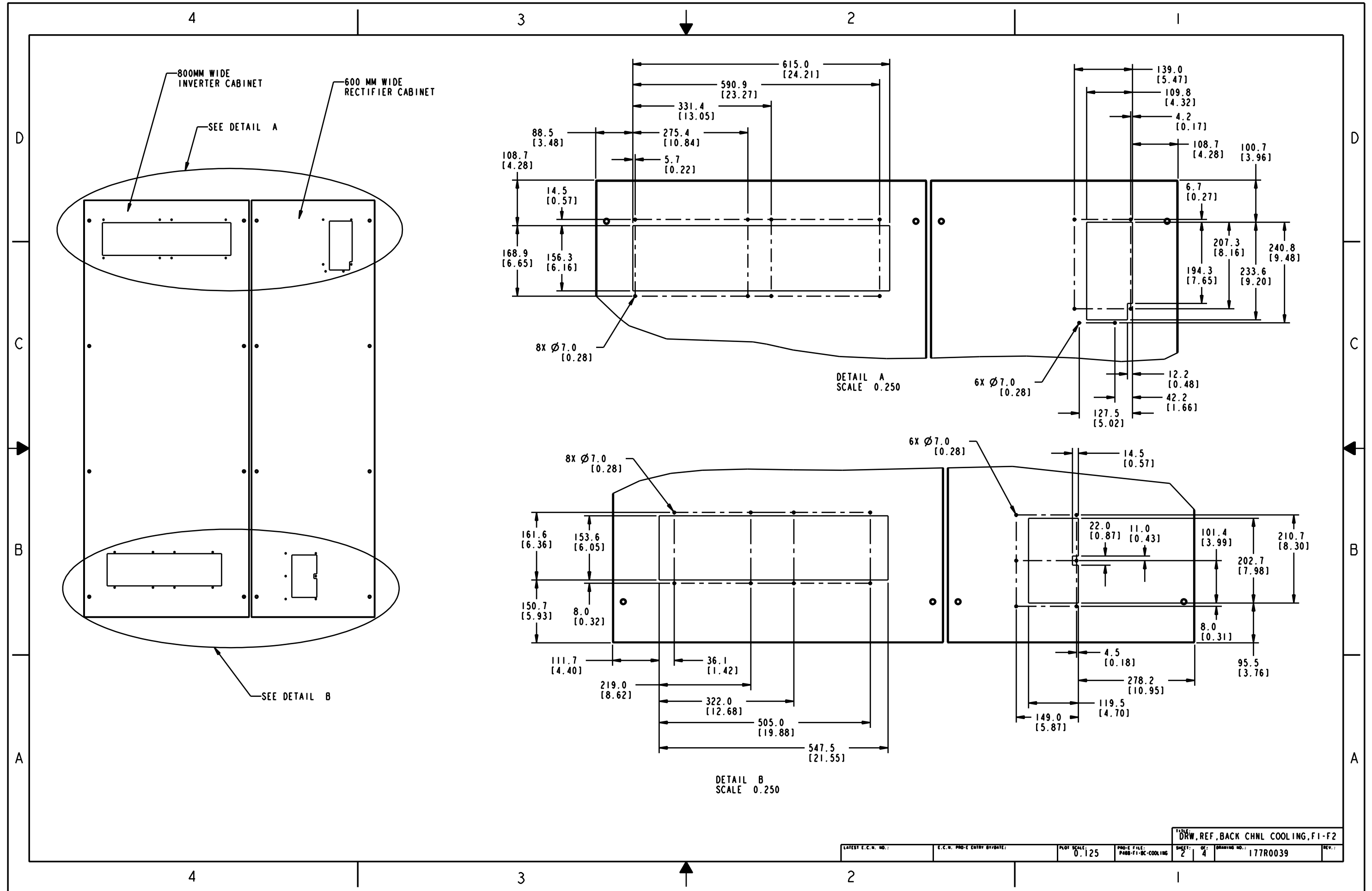
<p>NOTICE</p> <p>THIS DOCUMENT CONTAINS PROPRIETARY INFORMATION OF DANFOSS DRIVES. IT IS LOANED BY DANFOSS DRIVES SUBJECT TO THE CONDITIONS THAT IT AND THE INFORMATION EMBODED THEREIN SHALL BE USED ONLY FOR RECORD AND REFERENCE PURPOSES. SHALL NOT BE USED OR CAUSED TO BE USED IN ANY WAY PREJUDICIAL TO THE INTERESTS OF DANFOSS DRIVES. SHALL NOT BE REPRODUCED OR COPIED IN WHOLE OR IN PART OR DISCLOSED TO ANYONE WITHOUT THE DIRECT WRITTEN PERMISSION OF DANFOSS DRIVES. AND SHALL BE RETURNED UPON REQUEST.</p>		<p>PROJ. ENTRY BY/DATE: BK 08/09/07</p> <p>DESIGNED BY/DATE: BK 08/09/07</p> <p>APPROVAL:</p>	<p>CHECKED BY/DATE:</p> <p>INFO. APPROVAL BY/DATE:</p> <p>ENG. APPROVAL BY/DATE:</p>	<p>Danfoss DANFOSS DRIVES</p> <p>DRW. REF. BACK CHNL COOLING, F1-F2</p>
<p>LATEST E.C.N. NO.:</p>	<p>E.C.N. PROJ. ENTRY BY/DATE:</p>	<p>PLOT SCALE: NONE</p>	<p>PROJ. FILE: P460-F1-DC-COOLING</p>	<p>SHEET: 1 OF 4 DRAWING NO.: 177R0039</p>

4

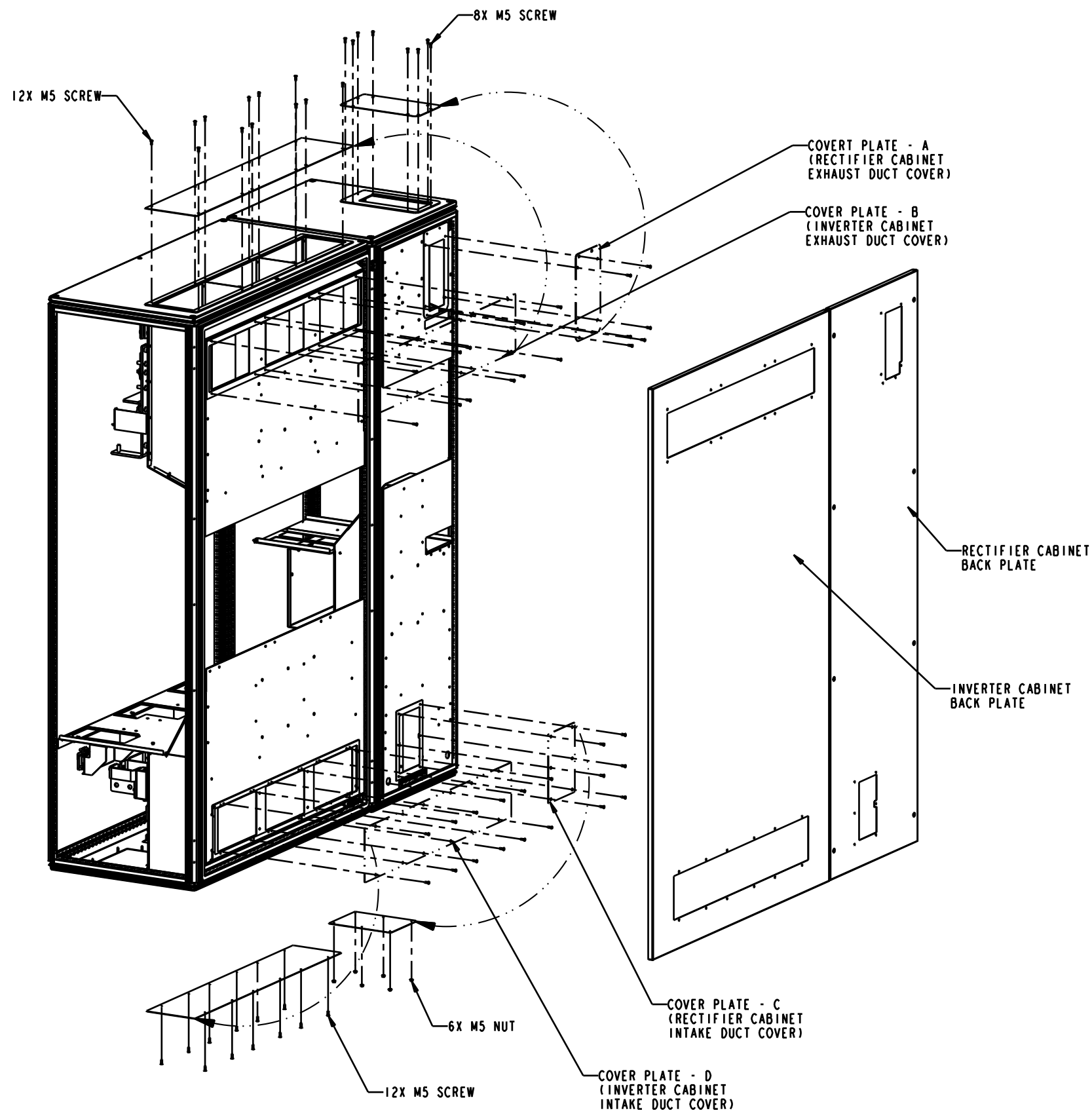
3

2

1



LATEST E.C.R. NO.:		E.C.R. PROJ. ENTRY BY/DATE:		PLOT SCALE: 0.125		PROJ. FILE: P888-FI-DC-COOLING		SHEET: 2 OF 4		DRAWING NO.: 177R0039		REV.:	
TITLE: DRW, REF, BACK CHNL COOLING, FI-F2													

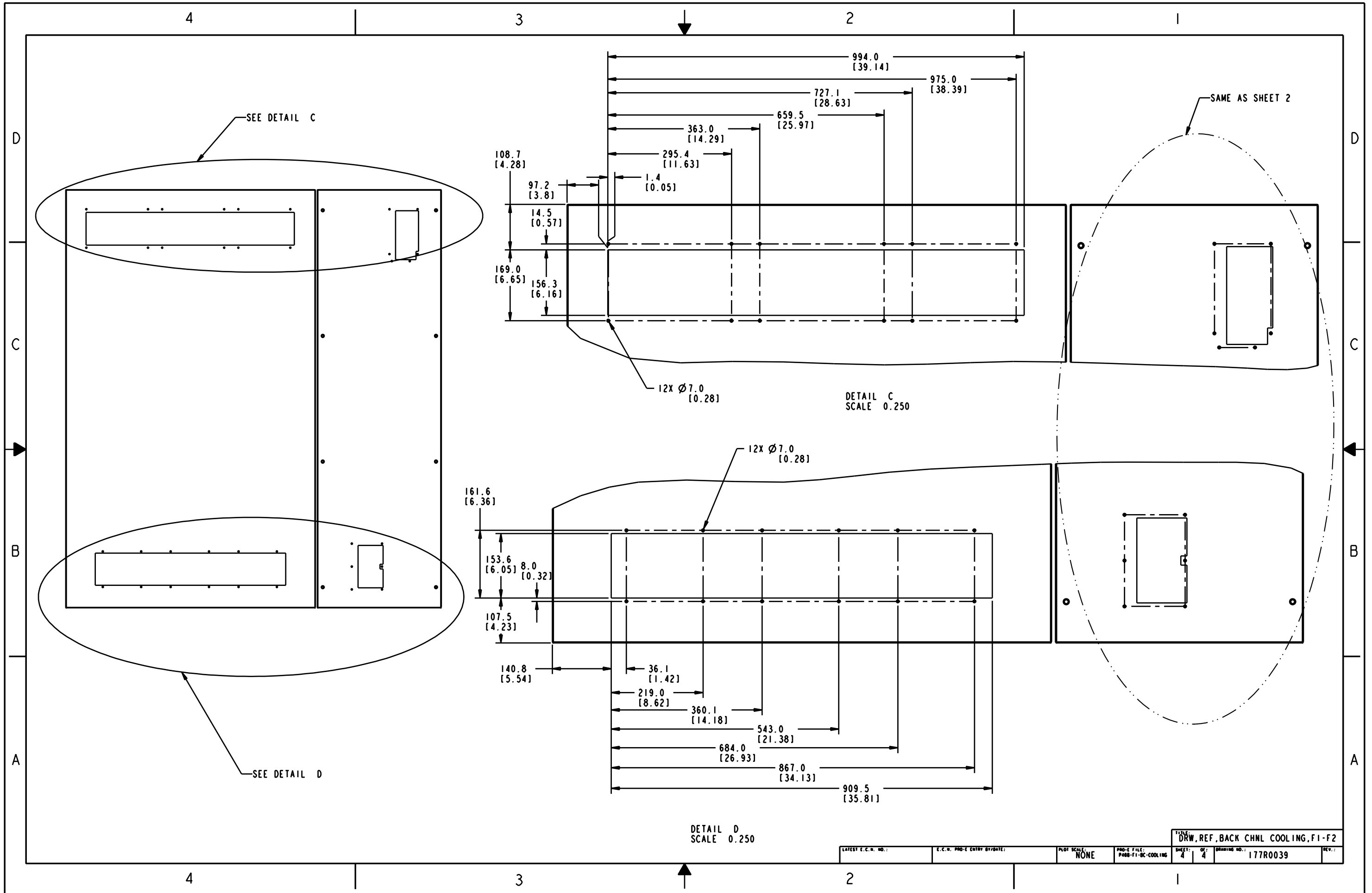


STEPS:

1. REMOVE BOTH CABINET BACK PLATE
2. REMOVE COVER PLATE A,B,C & D
3. INSTALLED COVER PLATE REMOVED IN STEP 2 TO BLOCK TOP AND BOTTOM OPENING USING THE SCREW REMOVED DURING STEP 2. GASKET REQUIRED ARE ALREADY PROVIDED ON BOTH TOP AND BOTTOM. (NOTE: TO MOUNT RECTIFIER BOTTOM PLATE 6X M5 NUT WOULD BE NEEDED)
4. MAKE CUTOUT ON CABINET BACKPLATE AS SHOWN ON SHEET 4.
5. RE-INSTALL BOTH BACK PLATE AND ATTACH DUCTS THROUGH HOLES CUT INTO BACKPLATE USING LONGER M5 SCREWS.

DRW, REF, BACK CHNL COOLING, F1-F2

LATEST E.C.R. NO.:	E.C.R. PRO-E ENTRY BY/DATE:	PLOT SCALE: NONE	PRO-E FILE: P488-F1-DC-COOLING	SHEET: 3	OF: 4	DRAWING NO.: 177R0039	REV.:
--------------------	-----------------------------	------------------	--------------------------------	----------	-------	-----------------------	-------



LATEST E.C.R. NO.:		E.C.R. PROJ. ENTRY BY/DATE:		PLOT SCALE: NONE		PROJ. FILE: P888-FI-DC-COOLING		SHEET: 4 OF 4		DRAWING NO.: 177R0039		REV.:	
TITLE: DRW. REF. BACK CHNL COOLING, F1-F2													