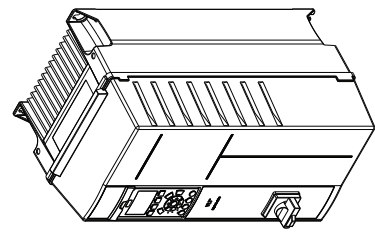
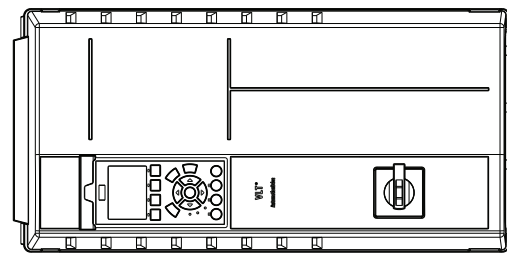
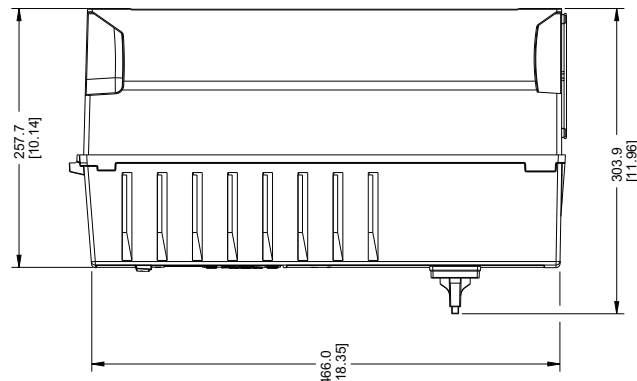
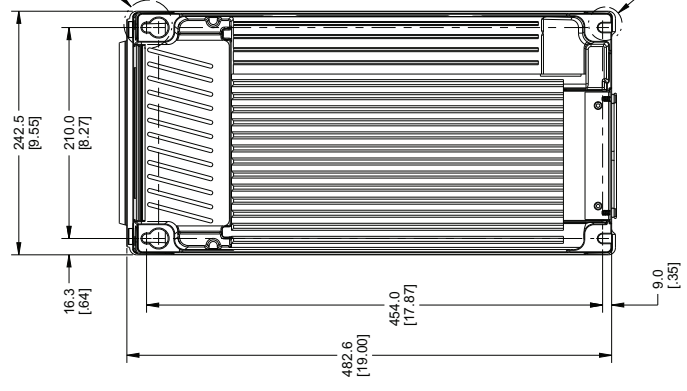
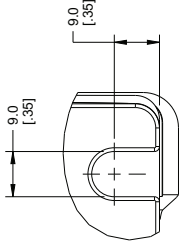
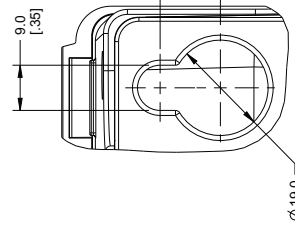


ZONE	REV	DATE	DESCRIPTION	DESIGNER	DATE	DATE	DATE
A	7827	2009NOV03	ORIGINAL RELEASE	P. LOVAGUJ	J. MEHAFFEY		

- NOTES :
- FOR PROPER COOLING, REAR OF DRIVE MUST BE MOUNTED ON A SOLID, FLAT SURFACE.
 - DRIVE DOES NOT REQUIRE SIDE-BY-SIDE FREE AIR SPACE. 200 MM (8 INCHES) OF FREE AIR SPACE REQUIRED AT TOP AND BOTTOM OF DRIVE.
 - DRIVE MUST BE INSTALLED WITHIN 15.25 METERS (50 FEET) OF COMPRESSOR WITH UNSHIELDED MOTOR CABLES OR WITHIN 15.25 METERS (50 FEET) OF COMPRESSOR WITH SHIELDED CABLES.
 - DRIVE MUST HAVE SEMICONDUCTOR FUSE BLOW FUSES (SEE INSTRUCTION MANUAL).
 - PRESSURE TRANSDUCER SHOULD BE MOUNTED AT COMPRESSOR DISCHARGE.
 - PRESSURE TRANSDUCER MUST BE MOUNTED WITHIN 150 METERS (492 FEET) OF DRIVE.
 - SEE OPERATOR'S MANUAL FOR DRIVE CONTROLLER AND AC POWER TERMINAL LOCATIONS.
 - RATED ALTITUDE: 1000 METERS (3281 FEET)
 - MAX CONTINUOUS TEMPERATURE: 46°C (115°F)
 - UL, cUL, AND CE APPROVED.
 - ESTIMATED SHIPPING WEIGHT: 24 KG (53 LBS.)
 - THIS DRAWING IS APPLICABLE FOR THE FOLLOWING NEMA 1 AND NEMA 12 DRIVES, WITH FUSED DISCONNECT, WITH AND WITHOUT RFI:
380-500 VAC MODELS: IRV302P11KT5E21 - IRV302P11KT5E55
IRV302P15KT5E21 - IRV302P15KT5E55
 - ALL DIMENSIONS ARE IN MM WITH INCHES IN PARENTHESIS.



STANDARD TOLERANCES (UNLESS OTHERWISE SPECIFIED)	ALL DIMENSIONS ARE IN MILLIMETERS (INCHES IN PARENTHESIS)	UNSPECIFIED TOLERANCES:	DATE	DATE	DATE
±0.25	±0.010	±0.25	2009NOV03	2009NOV03	2009NOV03
±0.13	±0.005	±0.13	J. MEHAFFEY	J. MEHAFFEY	J. MEHAFFEY
±0.075	±0.0025	±0.075	J. MEHAFFEY	J. MEHAFFEY	J. MEHAFFEY
±0.05	±0.0015	±0.05	J. MEHAFFEY	J. MEHAFFEY	J. MEHAFFEY
±0.025	±0.00075	±0.025	J. MEHAFFEY	J. MEHAFFEY	J. MEHAFFEY
±0.0125	±0.000375	±0.0125	J. MEHAFFEY	J. MEHAFFEY	J. MEHAFFEY
±0.00625	±0.0001875	±0.00625	J. MEHAFFEY	J. MEHAFFEY	J. MEHAFFEY
±0.003125	±0.00009375	±0.003125	J. MEHAFFEY	J. MEHAFFEY	J. MEHAFFEY
±0.0015625	±0.000046875	±0.0015625	J. MEHAFFEY	J. MEHAFFEY	J. MEHAFFEY
±0.00078125	±0.0000234375	±0.00078125	J. MEHAFFEY	J. MEHAFFEY	J. MEHAFFEY
±0.000390625	±0.00001171875	±0.000390625	J. MEHAFFEY	J. MEHAFFEY	J. MEHAFFEY
±0.0001953125	±0.000005859375	±0.0001953125	J. MEHAFFEY	J. MEHAFFEY	J. MEHAFFEY
±0.00009765625	±0.0000029296875	±0.00009765625	J. MEHAFFEY	J. MEHAFFEY	J. MEHAFFEY
±0.000048828125	±0.00000146484375	±0.000048828125	J. MEHAFFEY	J. MEHAFFEY	J. MEHAFFEY
±0.0000244140625	±0.000000732421875	±0.0000244140625	J. MEHAFFEY	J. MEHAFFEY	J. MEHAFFEY
±0.00001220703125	±0.0000003662109375	±0.00001220703125	J. MEHAFFEY	J. MEHAFFEY	J. MEHAFFEY
±0.000006103515625	±0.00000018310546875	±0.000006103515625	J. MEHAFFEY	J. MEHAFFEY	J. MEHAFFEY
±0.0000030517578125	±0.000000091552734375	±0.0000030517578125	J. MEHAFFEY	J. MEHAFFEY	J. MEHAFFEY
±0.00000152587890625	±0.0000000457763671875	±0.00000152587890625	J. MEHAFFEY	J. MEHAFFEY	J. MEHAFFEY
±0.000000762939453125	±0.00000002288818359375	±0.000000762939453125	J. MEHAFFEY	J. MEHAFFEY	J. MEHAFFEY
±0.0000003814697265625	±0.000000011444091796875	±0.0000003814697265625	J. MEHAFFEY	J. MEHAFFEY	J. MEHAFFEY
±0.00000019073486328125	±0.0000000057220458984375	±0.00000019073486328125	J. MEHAFFEY	J. MEHAFFEY	J. MEHAFFEY
±0.000000095367431640625	±0.00000000286102294921875	±0.000000095367431640625	J. MEHAFFEY	J. MEHAFFEY	J. MEHAFFEY
±0.0000000476837158203125	±0.000000001430511474609375	±0.0000000476837158203125	J. MEHAFFEY	J. MEHAFFEY	J. MEHAFFEY
±0.00000002384185791015625	±0.0000000007152557373046875	±0.00000002384185791015625	J. MEHAFFEY	J. MEHAFFEY	J. MEHAFFEY
±0.000000011920928955078125	±0.00000000035762786865234375	±0.000000011920928955078125	J. MEHAFFEY	J. MEHAFFEY	J. MEHAFFEY
±0.0000000059604644775390625	±0.000000000178813934326171875	±0.0000000059604644775390625	J. MEHAFFEY	J. MEHAFFEY	J. MEHAFFEY
±0.00000000298023223876953125	±0.0000000000894069671630859375	±0.00000000298023223876953125	J. MEHAFFEY	J. MEHAFFEY	J. MEHAFFEY
±0.000000001490116119384765625	±0.00000000004470348358154296875	±0.000000001490116119384765625	J. MEHAFFEY	J. MEHAFFEY	J. MEHAFFEY
±0.0000000007450580596923828125	±0.00000000002235174179077146484375	±0.0000000007450580596923828125	J. MEHAFFEY	J. MEHAFFEY	J. MEHAFFEY
±0.00000000037252902984619140625	±0.000000000011175870895357232421875	±0.00000000037252902984619140625	J. MEHAFFEY	J. MEHAFFEY	J. MEHAFFEY
±0.000000000186264514923095703125	±0.000000000005587935447678616196875	±0.000000000186264514923095703125	J. MEHAFFEY	J. MEHAFFEY	J. MEHAFFEY
±0.0000000000931322574615478515625	±0.0000000000027939677238393080984375	±0.0000000000931322574615478515625	J. MEHAFFEY	J. MEHAFFEY	J. MEHAFFEY
±0.000000000046566128730773927890625	±0.00000000000139698386191965404921875	±0.000000000046566128730773927890625	J. MEHAFFEY	J. MEHAFFEY	J. MEHAFFEY
±0.0000000000232830643653869639453125	±0.000000000000698491930959727024609375	±0.0000000000232830643653869639453125	J. MEHAFFEY	J. MEHAFFEY	J. MEHAFFEY
±0.000000000011641532182693484765625	±0.0000000000003492459654798635373046875	±0.000000000011641532182693484765625	J. MEHAFFEY	J. MEHAFFEY	J. MEHAFFEY
±0.0000000000058207660913467423828125	±0.00000000000017462298273993176865234375	±0.0000000000058207660913467423828125	J. MEHAFFEY	J. MEHAFFEY	J. MEHAFFEY
±0.00000000000291038304567311923828125	±0.000000000000087311491369965884326171875	±0.00000000000291038304567311923828125	J. MEHAFFEY	J. MEHAFFEY	J. MEHAFFEY
±0.00000000000145519152283655961923828125	±0.000000000000043655745954798635373046875	±0.00000000000145519152283655961923828125	J. MEHAFFEY	J. MEHAFFEY	J. MEHAFFEY
±0.00000000000072759576141827980961923828125	±0.0000000000000218278729773993176865234375	±0.00000000000072759576141827980961923828125	J. MEHAFFEY	J. MEHAFFEY	J. MEHAFFEY
±0.0000000000003637978807091394141827980961923828125	±0.00000000000001091393848869965884326171875	±0.0000000000003637978807091394141827980961923828125	J. MEHAFFEY	J. MEHAFFEY	J. MEHAFFEY
±0.000000000000181898940354570707091394141827980961923828125	±0.0000000000000054569692443494798635373046875	±0.000000000000181898940354570707091394141827980961923828125	J. MEHAFFEY	J. MEHAFFEY	J. MEHAFFEY
±0.00000000000009094947017728535354570707091394141827980961923828125	±0.00000000000000272848462217473993176865234375	±0.00000000000009094947017728535354570707091394141827980961923828125	J. MEHAFFEY	J. MEHAFFEY	J. MEHAFFEY
±0.00000000000004547473508861767728535354570707091394141827980961923828125	±0.00000000000000136424231108739965884326171875	±0.00000000000004547473508861767728535354570707091394141827980961923828125	J. MEHAFFEY	J. MEHAFFEY	J. MEHAFFEY
±0.0000000000000227373675443088383861767728535354570707091394141827980961923828125	±0.000000000000000682121154369965884326171875	±0.0000000000000227373675443088383861767728535354570707091394141827980961923828125	J. MEHAFFEY	J. MEHAFFEY	J. MEHAFFEY
±0.000000000000011368683772171543088383861767728535354570707091394141827980961923828125	±0.00000000000000034106057718479965884326171875	±0.000000000000011368683772171543088383861767728535354570707091394141827980961923828125	J. MEHAFFEY	J. MEHAFFEY	J. MEHAFFEY
±0.00000000000000568434188585771543088383861767728535354570707091394141827980961923828125	±0.00000000000000017053028859239965884326171875	±0.00000000000000568434188585771543088383861767728535354570707091394141827980961923828125	J. MEHAFFEY	J. MEHAFFEY	J. MEHAFFEY
±0.00000000000000284217094292885771543088383861767728535354570707091394141827980961923828125	±0.00000000000000008526514429619965884326171875	±0.00000000000000284217094292885771543088383861767728535354570707091394141827980961923828125	J. MEHAFFEY	J. MEHAFFEY	J. MEHAFFEY
±0.0000000000000014210854714644292885771543088383861767728535354570707091394141827980961923828125	±0.00000000000000004263257214809965884326171875	±0.0000000000000014210854714644292885771543088383861767728535354570707091394141827980961923828125	J. MEHAFFEY	J. MEHAFFEY	J. MEHAFFEY
±0.000000000000000710542735732214644292885771543088383861767728535354570707091394141827980961923828125	±0.000000000000000021316286074049965884326171875	±0.000000000000000710542735732214644292885771543088383861767728535354570707091394141827980961923828125	J. MEHAFFEY	J. MEHAFFEY	J. MEHAFFEY
±0.000000000000000355271367866114644292885771543088383861767728535354570707091394141827980961923828125	±0.0000000000000000106581430370249965884326171875	±0.000000000000000355271367866114644292885771543088383861767728535354570707091394141827980961923828125	J. MEHAFFEY	J. MEHAFFEY	J. MEHAFFEY
±0.00000000000000017763568393307114644292885771543088383861767728535354570707091394141827980961923828125	±0.00000000000000000532907151701249965884326171875	±0.00000000000000017763568393307114644292885771543088383861767728535354570707091394141827980961923828125	J. MEHAFFEY	J. MEHAFFEY	J. MEHAFFEY
±0.0000000000000000888178419665153568393307114644292885771543088383861767728535354570707091394141827980961923828125	±0.000000000000000002664535758506249965884326171875	±0.0000000000000000888178419665153568393307114644292885771543088383861767728535354570707091394141827980961923828125	J. MEHAFFEY	J. MEHAFFEY	J. MEHAFFEY
±0.00000000000000004440892098325768393307114644292885771543088383861767728535354570707091394141827980961923828125	±0.0000000000000000013322678792501249965884326171875	±0.00000000000000004440892098325768393307114644292885771543088383861767728535354570707091394141827980961923828125	J. MEHAFFEY	J. MEHAFFEY	J. MEHAFFEY
±0.0000000000000000222044604916288393307114644292885771543088383861767728535354570707091394141827980961923828125	±0.00000000000000000066613393962506249965884326171875	±0.0000000000000000222044604916288393307114644292885771543088383861767728535354570707091394141827980961923828125	J. MEHAFFEY	J. MEHAFFEY	J. MEHAFFEY
±0.000000000000000011102230245814144604916288393307114644292885771543088383861767728535354570707091394141827980961923828125	±0.000000000000000000333066969812531249965884326171875	±0.000000000000000011102230245814144604916288393307114644292885771543088383861767728535354570707091394141827980961923828125	J. MEHAFFEY	J. MEHAFFEY	J. MEHAFFEY
±0.00000000000000000555111512290707091394141827980961923828125	±0.0000000000000000001665334849062656249965884326171875	±0.00000000000000000555111512290707091394141827980961923828125	J. MEHAFFEY	J. MEHAFFEY	J. MEHAFFEY
±0.00000000000000000277555756145353545707091394141827980961923828125	±0.00000000000000000008326674245312656249965884326171875	±0.00000000000000000277555756145353545707091394141827980961923828125	J. MEHAFFEY	J. MEHAFFEY	J. MEHAFFEY
±0.0000000000000000013877787807267715430883838617677285353545707091394141827980961923828125	±0.000000000000000000041633371226562656249965884326171875	±0.0000000000000000013877787807267715430883838617677285353545707091394141827980961923828125	J. MEHAFFEY	J. MEHAFFEY	J. MEHAFFEY
±0.00000000000000000069388939036338617677285353545707091394141827980961923828125	±0.0000000000000000000208166856132812656249965884326171875	±0.00000000000000000069388939036338617677285353545707091394141827980961923828125	J. MEHAFFEY	J. MEHAFFEY	J. MEHAFFEY
±0.000000000000000000346944695181693071146442928857715430883838617677285353545707091394141827980961923828125	±0.00000000000000000001040834280664062656249965884326171875	±0.00000000000000000034694469518169307114644292885771543088			