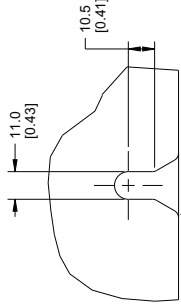
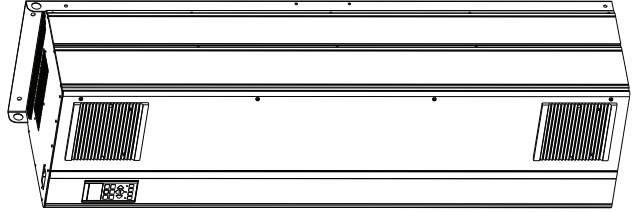
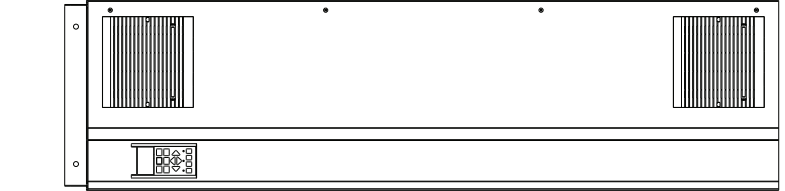
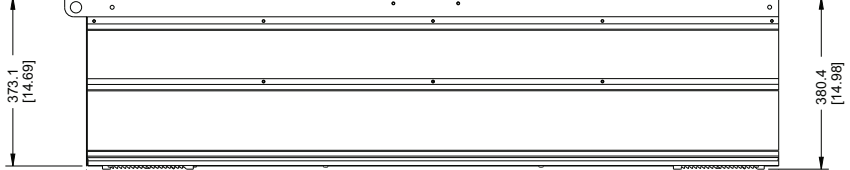
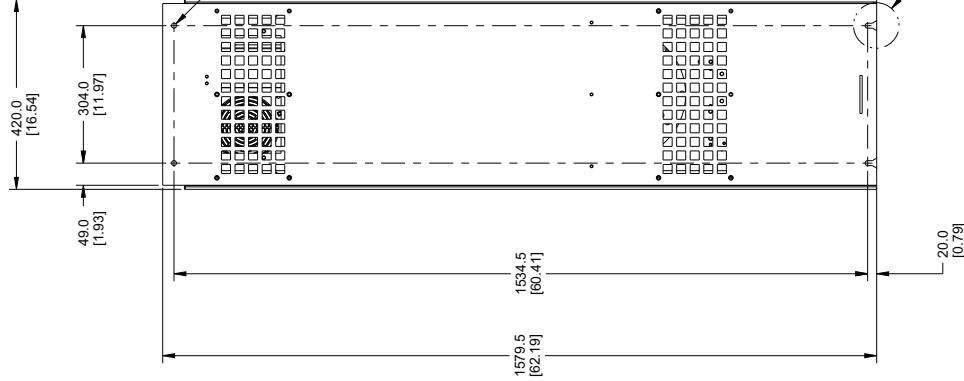


ZONE	REV	DATE	DESCRIPTION	DESIGNED BY	DRAWN BY	CHECKED BY
A	77412	09-29-2008	ORIGINAL RELEASE	J. MEHAFFEY	J. MEHAFFEY	J. MEHAFFEY
B	77517	09-29-2008	REV NOTE 1 BY ADDING 550-600 VAC DRIVES	R. REDMOND	R. REDMOND	J. MEHAFFEY
C	78165	20080116	REV NOTE 1 AND 5	R. REDMOND	R. REDMOND	J. MEHAFFEY
D	78165	20080116	NOTE 6: 150 METERS WAS 1.8.	R. REDMOND	R. REDMOND	J. MEHAFFEY

ZONE	REV	DATE	DESCRIPTION	DESIGNED BY	DRAWN BY	CHECKED BY
A	77412	09-29-2008	ORIGINAL RELEASE	J. MEHAFFEY	J. MEHAFFEY	J. MEHAFFEY
B	77517	09-29-2008	REV NOTE 1 BY ADDING 550-600 VAC DRIVES	R. REDMOND	R. REDMOND	J. MEHAFFEY
C	78165	20080116	REV NOTE 1 AND 5	R. REDMOND	R. REDMOND	J. MEHAFFEY
D	78165	20080116	NOTE 6: 150 METERS WAS 1.8.	R. REDMOND	R. REDMOND	J. MEHAFFEY



DETAIL A
SCALE 1:00



- NOTES:
- FOR PROPER COOLING, REAR OF DRIVE MUST BE MOUNTED ON A SOLID, FLAT SURFACE, OR IF MOUNTED IN OPEN AREA, COVER VENT SLOTS IN THE BACK OF THE DRIVE.
 - DRIVE DOES NOT REQUIRE SIDE-BY-SIDE FREE AIR SPACE.
200 MM (8 INCHES) OF FREE AIR SPACE REQUIRED AT TOP AND BOTTOM OF DRIVE.
 - DRIVE MUST BE INSTALLED WITHIN 15.25 METERS (50 FEET) OF COMPRESSOR WITH UNSHIELDED MOTOR CABLES OR WITHIN 15.25 METERS (50 FEET) OF COMPRESSOR WITH SHIELDED CABLES.
 - DRIVE MUST HAVE SEMICONDUCTOR FAST BLOW FUSES (SEE INSTRUCTION MANUAL).
 - PRESSURE TRANSDUCER SHOULD BE MOUNTED AT COMPRESSOR DISCHARGE.
 - PRESSURE TRANSDUCER MUST BE MOUNTED WITHIN 150 METERS (492 FEET) OF DRIVE.
 - SEE OPERATOR'S MANUAL FOR DRIVE CONTROLLER AND AC POWER TERMINAL LOCATIONS.
 - A SPREADER BAR IS REQUIRED WHEN LIFTING BY THE LIFTING HOLES.
 - RATED ALTITUDE: 1000 METERS (3281 FEET)
 - MAX CONTINUOUS TEMPERATURE: 46°C (115°F)
 - UL, cUL, AND CE APPROVED.
 - ESTIMATED SHIPPING WEIGHT: 151 KG (333 LBS.)
 - THIS DRAWING IS APPLICABLE FOR THE FOLLOWING NEMA 1 AND NEMA 12 DRIVES, WITH FUSED DISCONNECT WITH AND WITHOUT PFC:
380-600 VAC MODELS: IRV302P132T5E21 - IRV302P160T5E21 - IRV302P200T5E21
550-600 VAC MODELS: IRV302P132T5E54 - IRV302P160T5E54 - IRV302P200T5E54
550-600 VAC MODELS: IRV302P160T7E21 - IRV302P200T7E21 - IRV302P250T7E21 - IRV302P315T7E21
 - ALL DIMENSIONS ARE IN MM WITH INCHES IN PARENTHESIS.

		DRIVE, VF IRV302 SERIES GENERAL ARRANGEMENT	
DO NOT SCALE DRAWING DRAWING TO BE USED TO MANUFACTURE PARTS CAD GENERATED DRAWING NO MANUAL REVISIONS ALLOWED		THIRD PARTY PRODUCTION DATE: 20080909 DRAWN: J. MEHAFFEY CHECKED: J. MEHAFFEY DATE: 20080909	
STANDARD TOLERANCES: ALL DIMENSIONS ARE IN MILLIMETERS (IN PARENTHESES) UNLESS OTHERWISE SPECIFIED: HOLE: ± 0.1 ONE PLACE (XX) : ± 0.25 TWO PLACE (XX) : ± 0.125 ANGLES (A) : ± 1°		THIS DRAWING CONTAINS PROPRIETARY INFORMATION AND IS THE PROPERTY OF INGERSOLL-RAND CO. AND IS NOT TO BE REPRODUCED, COPIED, OR TRANSMITTED IN ANY FORM OR BY ANY MEANS, ELECTRONIC OR MECHANICAL, INCLUDING PHOTOCOPYING, RECORDING, OR BY ANY INFORMATION STORAGE AND RETRIEVAL SYSTEM. THE DRAWING IS CONFIDENTIAL AND IS NOT TO BE DISCLOSED TO ANY OTHER PERSON OR ENTITY WITHOUT THE WRITTEN PERMISSION OF INGERSOLL-RAND CO. ANY UNAUTHORIZED USE OF THIS DRAWING OR ANY COPY THEREOF OR THE CONFIDENTIAL OR TRADE SECRET INFORMATION CONTAINED HEREIN IS STRICTLY PROHIBITED. IF YOU ARE NOT AN EMPLOYEE OF INGERSOLL-RAND CO. YOU ARE NOT TO RETAIN THE DRAWING OR TO COPY, REPRODUCE, OR TRANSMIT IT TO ANY OTHER PERSON OR ENTITY. IF YOU ARE AN EMPLOYEE OF INGERSOLL-RAND CO. YOU ARE NOT TO RETAIN THE DRAWING OR TO COPY, REPRODUCE, OR TRANSMIT IT TO ANY OTHER PERSON OR ENTITY. ALL RIGHTS RESERVED.	
A1 SEE NOTES		23356504	
0.18" (4.67) SHEET		VIPER	