




# KIT COMPRESSOR COOLING ADAPTOR WITH STRAINER

100169, 100169-1, 100209.

 <p><b>Installation and servicing of Danfoss Turbocor® compressors by qualified and product trained personnel only. Follow these instructions and sound refrigeration/electrical/servicing practices relating to installation, commissioning, maintenance and service.</b></p>			
<p>Consult the appropriate Danfoss Turbocor Compressors Inc. (DTC) Service Manual on <a href="http://www.turbocoroem.com">www.turbocoroem.com</a> for detailed service instructions.</p>	<p><b>Never power compressor without covers in place and secured.</b></p> <p><b>Removing the mains input cover will expose you to a voltage hazard of up to 575V. Ensure the mains input power is off and locked out before removing cover.</b></p> <p><b>Before removing top cover, wait at least 20 minutes after isolating AC power to allow the high voltage capacitors to discharge.</b></p>	<p>Always wear appropriately rated safety equipment when working around equipment and/or components energized with high voltage.</p> <p><b>This equipment contains hazardous voltages that can cause serious injury or death.</b></p>	<p><b>Recover all refrigerant from compressor in accordance with local codes and ensure pressure is fully vented before the removal of refrigerant containing components.</b></p>

1 - Introduction:

COMPRESSOR COOLING ADAPTOR WITH STRAINER Removal and Installation Instructions.

This kit contains the Cooling Adapter and O-ring (where applicable). Please refer to our Service Manual for details regarding the replacement.

We have made the **TTS/TGS/TTH/TGH Service Manual** available to anyone. To access the manual, you may scan the applicable QR code below or you may go to our DTC website at [www.turbocoroem.com](http://www.turbocoroem.com). At the top of the page there is a pull-down menu called "Quick Links." Click this menu and select the appropriate service manual.

Refer to the applicable QR code below to download the TTS/TGS/TTH/TGH Service Manual.

**English**



**Chinese**



---

## 2 - Removal and Installation Instructions:

---

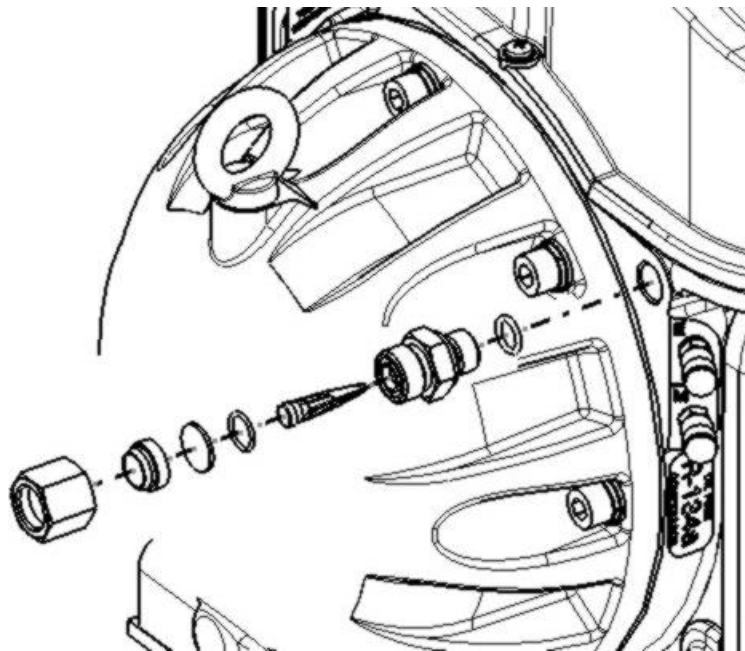
1. Using two 15/16" wrenches, hold the adaptor body steady while loosening the connection nut.
2. Using a 15/16" wrench, remove the adaptor body from the compressor housing. If the O-ring does not come out with the adaptor, remove it from the compressor body.
3. Verify the threads in the compressor body are clean and free of debris (do not use compressed gas to clean the threads as this may blow the debris into the compressor).
4. Clean and lubricate the O-ring. Install onto the cooling adaptor body.
5. Insert the cooling adaptor body into the compressor and hand tighten.
6. Using a torque wrench, tighten the cooling adaptor body to the compressor housing, 25 N.m. (18 ft. lb).
7. Install the screen inside the cooling adaptor.
8. If connecting the liquid line to the adaptor at this time, install either the short or long sweat adapter and nut minus the O-ring. (If not connecting the liquid line at this time skip to task #11). Tighten the nut finger tight against the cooling adaptor body. This will allow the measurement and fitting of the liquid line. Once the measuring and fitting of the liquid line has been completed unscrew the nut from the cooling adaptor body and complete the brazing of the liquid line to the sweat adapter.
9. Once the sweat adaptor assembly has been cooled, the O-Ring can be installed into the cooling adaptor body and the nut finger tightened. While using a 15/16" wrench on the cooling adaptor body, tighten the cooling adaptor nut using a 15/16" torque wrench to 12N.m (9 ft. lb).
10. Leak test the compressor.
11. If not connecting the liquid line at this time, install the O-ring and finger tighten the nut.

---

## 3 - 100209 Braze Sleeve Long Installation:

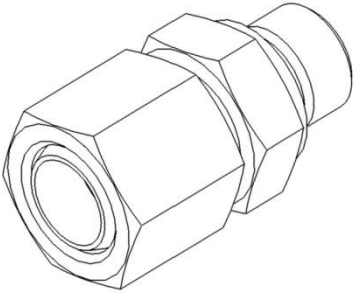

---

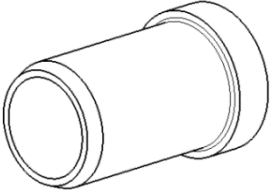
- If you purchased a longer sweat adapter (kit #100209), there is no need to remove the entire cooling adapter body from the compressor. The only thing needed to do is loosen the nut on the cooling adapter body, remove the short sweat adapter and insert the longer sweat adapter.



**Figure 1 Kit – Adapter Screen Fitting Assembly Installation**

4 - Kit Contents:

<b>KIT</b>		<b>100169, 100169-1</b>
QTY	Part(s) Description	Picture(s)
1	ADAPTER SCREEN FITTING ASSEMBLY	
1	O-RING	

<b>KIT</b>		<b>100209</b>
QTY	Part(s) Description	Picture(s)
1	SLEEVE, ORFS SILVER BRAZE	

Danfoss can accept no responsibility for possible errors in catalogues, brochures and other printed material. Danfoss reserves the right to alter its products without notice. This also applies to products already on order provided that such alterations can be made without subsequential changes being necessary in specifications already agreed. All trademarks in this material are property of the respective companies. Danfoss and the Danfoss logotype are trademarks of Danfoss A/S. All rights reserved.