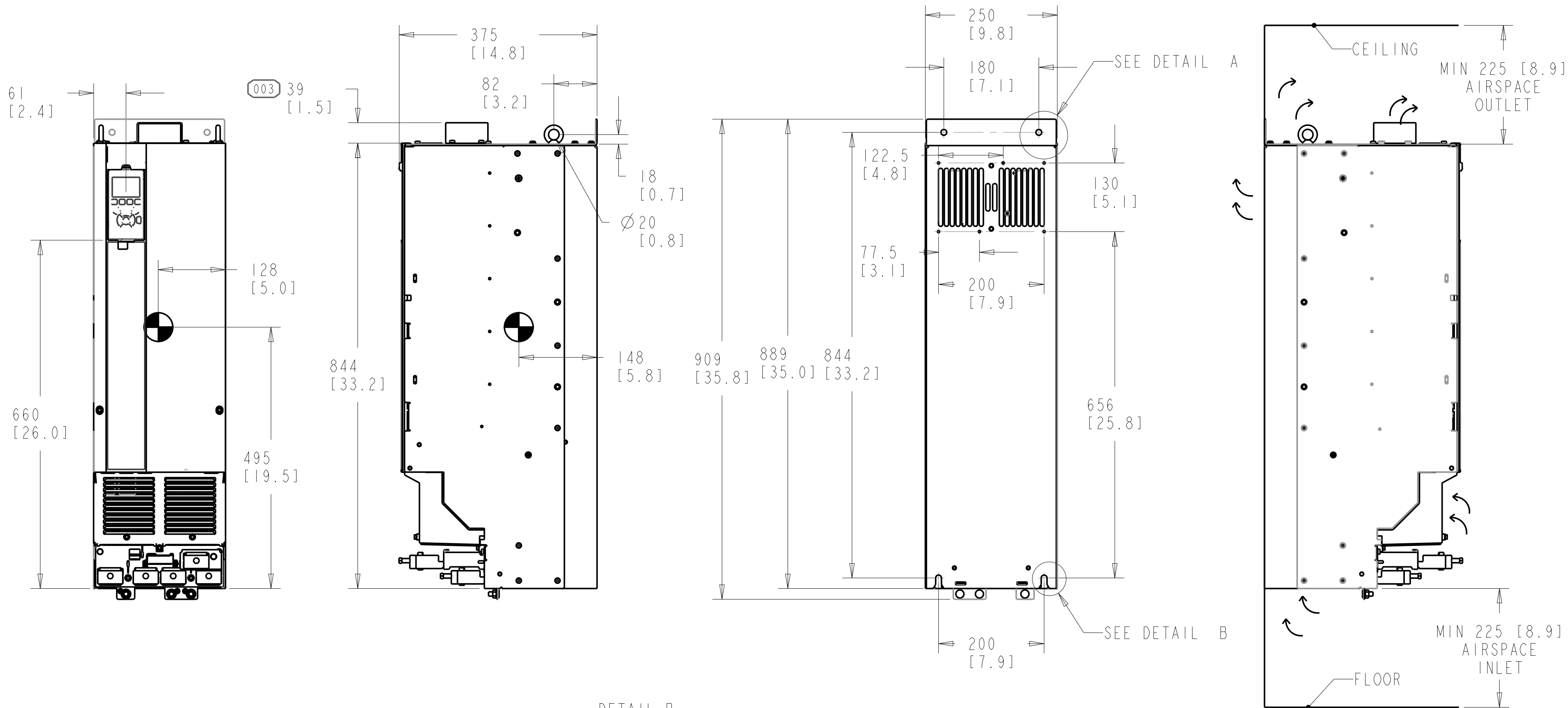
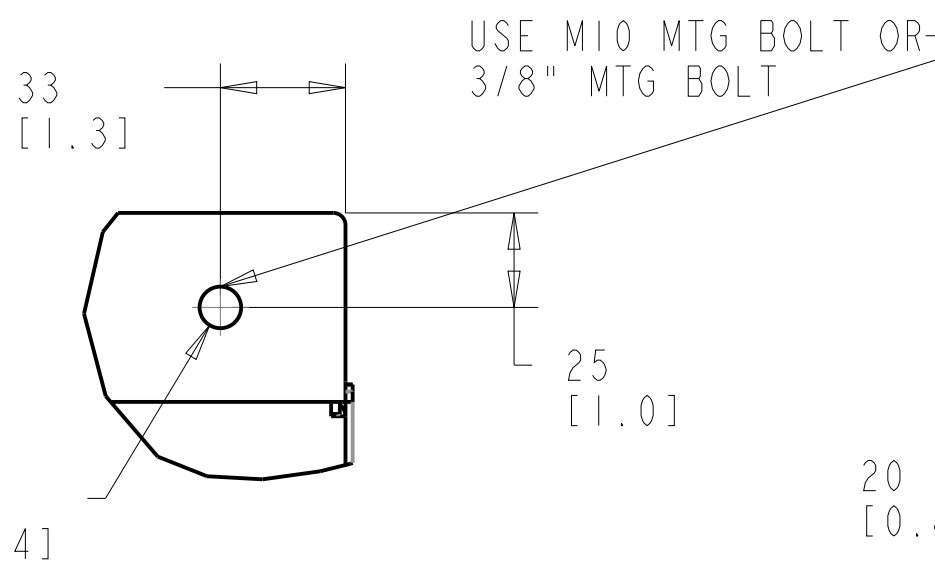


- NOTICE -

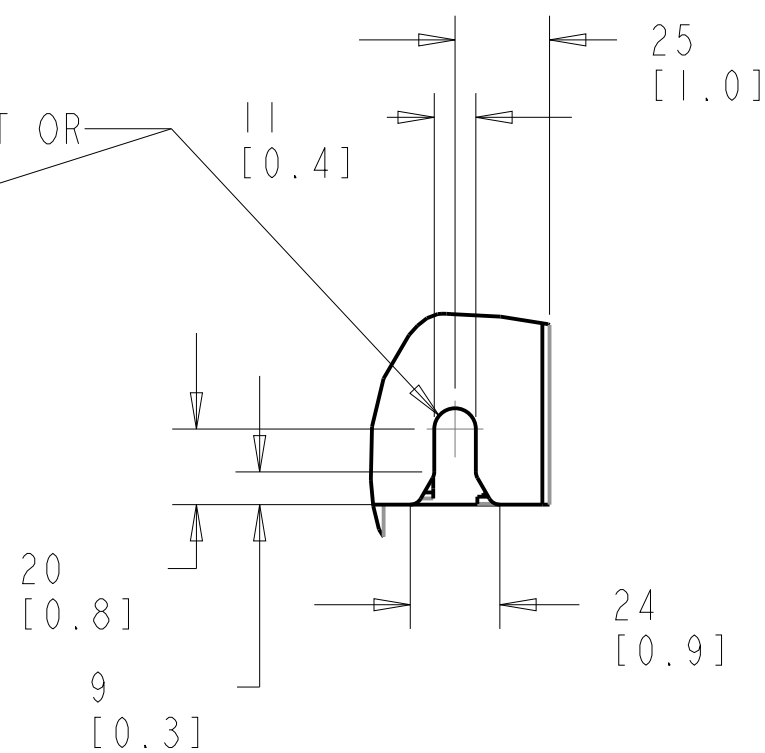
THIS DOCUMENT CONTAINS PROPRIETARY INFORMATION OF DANFOSS DRIVES. IT IS LOANED BY DANFOSS DRIVES SUBJECT TO THE CONDITIONS THAT IT AND THE INFORMATION EMBODIED THEREIN SHALL BE USED ONLY FOR RECORD AND REFERENCE PURPOSES. SHALL NOT BE USED OR CAUSED TO BE USED IN ANY WAY PREJUDICIAL TO THE INTERESTS OF DANFOSS DRIVES. SHALL NOT BE REPRODUCED OR COPIED IN WHOLE OR IN PART OR DISCLOSED TO ANYONE WITHOUT THE DIRECT WRITTEN PERMISSION OF DANFOSS DRIVES, AND SHALL BE RETURNED UPON REQUEST.



DETAIL A



DETAIL B

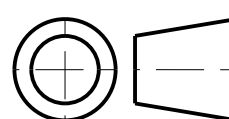


1. MAX AIRFLOW (BACKCHANNEL) - 7 M³/MIN (250 CFM)
2. MAX AIRFLOW (CABINET) - 1.7 M³/MIN (60 CFM)
3. MAX WEIGHT = 62 KG (135 LBS)
4. CENTER OF GRAVITY:
APPROXIMATE LOCATION ONLY, LOCATION MAY VARY BASED ON POWER RATING AND OPTIONS ORDERED.

UNLESS OTHERWISE SPECIFIED
INTERPRET DIM. AND TOL. PER
ASME Y14.5M-1994

.X±0.4 .XX±0.2 ≤±0.5
DIM. ARE IN MILLIMETERS
WEIGHTS ARE IN KILOGRAMS

THIRD ANGLE PROJECTION



PROPERTIES

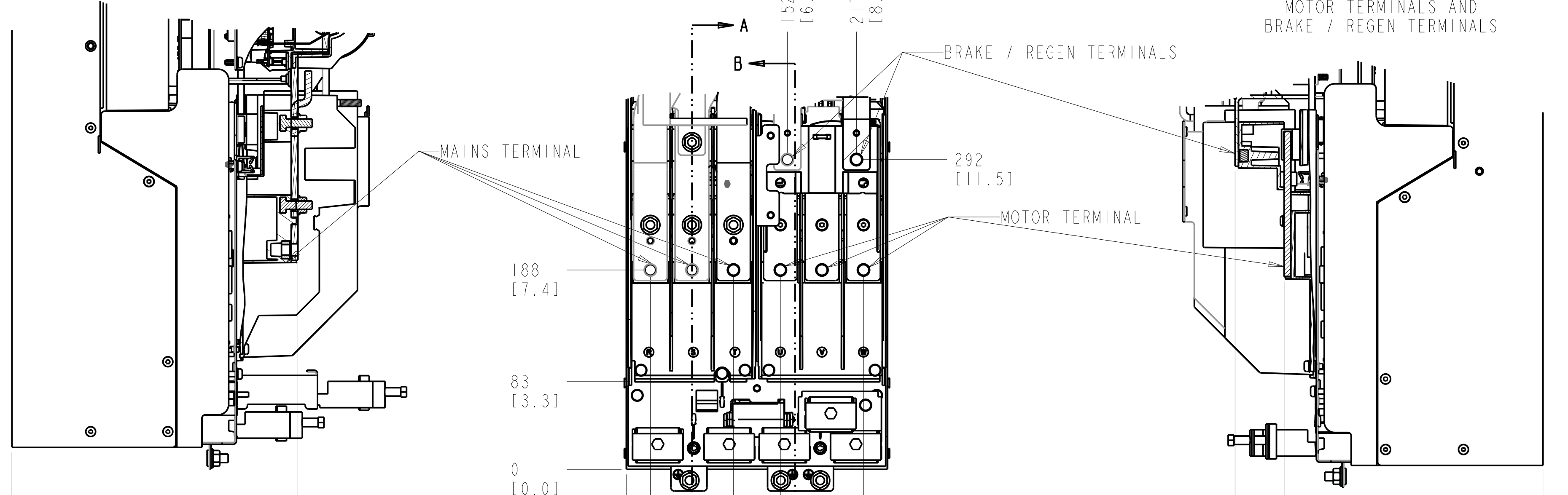
MATERIAL	N/A	
FINISH	N/A	
THICKNESS	N/A	
EST. WEIGHT	62	
APPROVALS	INITIALS	DATE
DRAWN	CCN	06/17/11
CHECKED		
ENGR		

TITLE			INSTALLATION DRAWING, D3H, 1P20/CHASSIS		
SIZE	MODEL	REV			
C		003			
SCALE	DRAWING NO.	SHEET			
0.175	177R0339	1 OF 4			

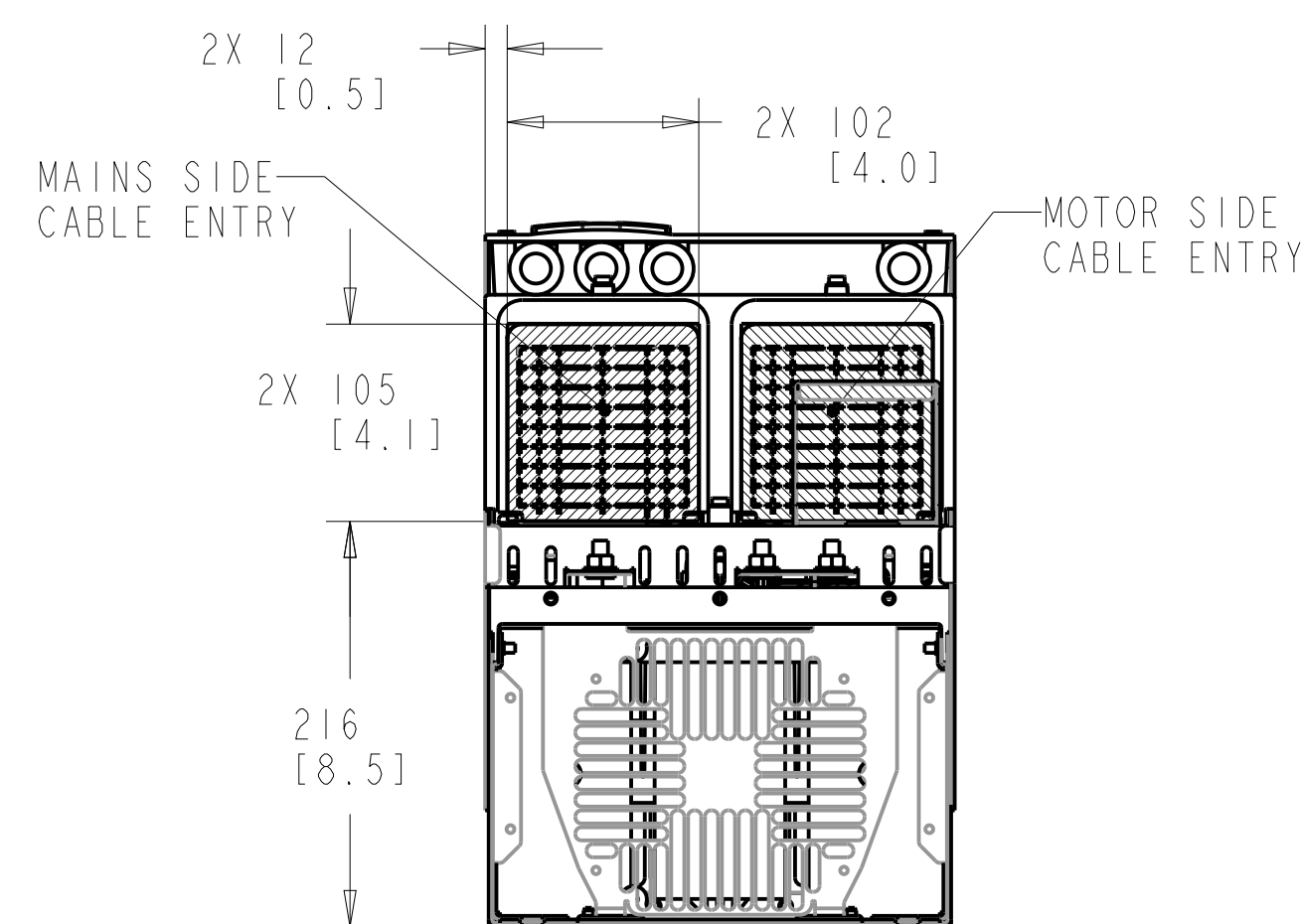
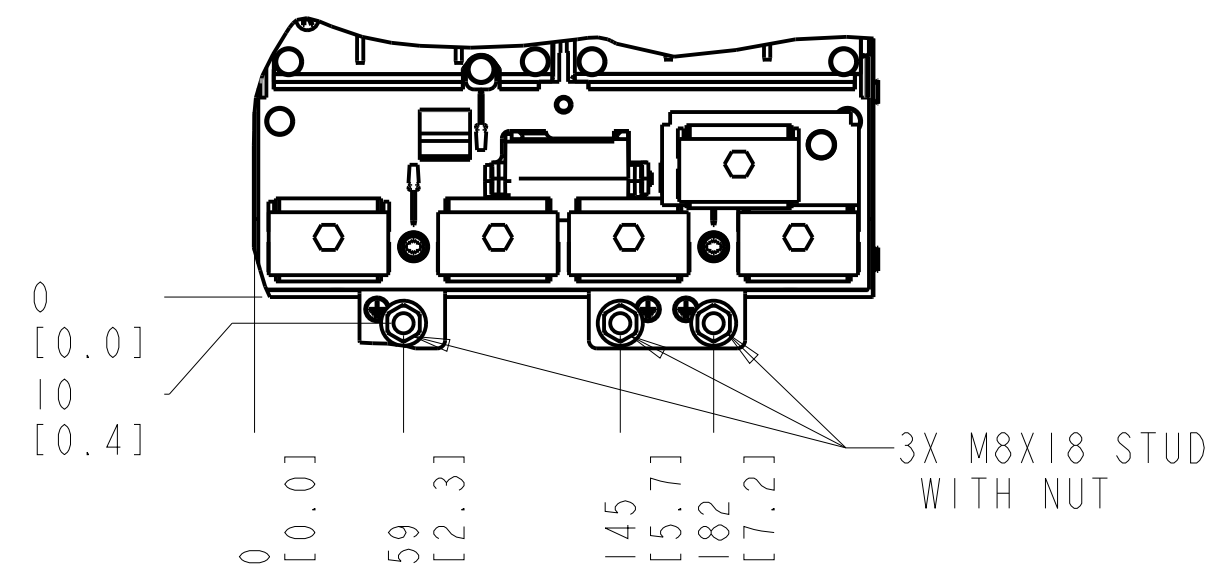


SECTION A-A
MAINS TERMINALS

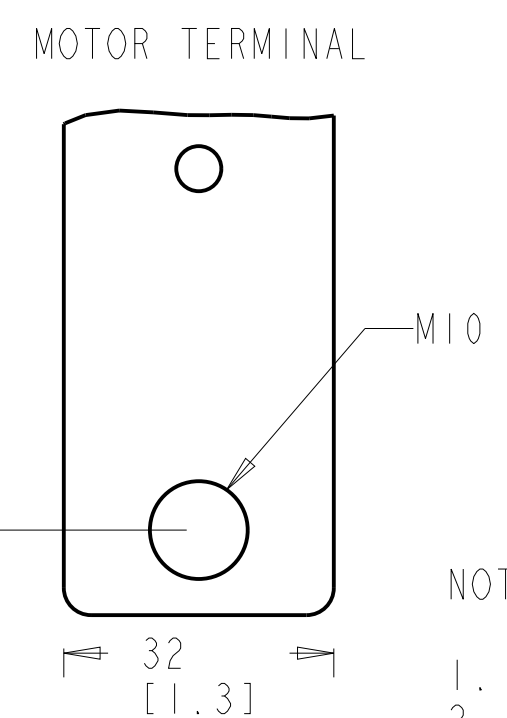
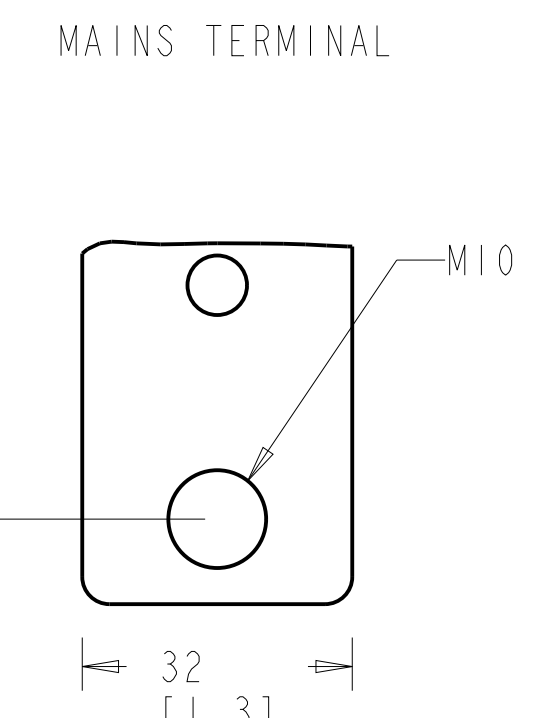
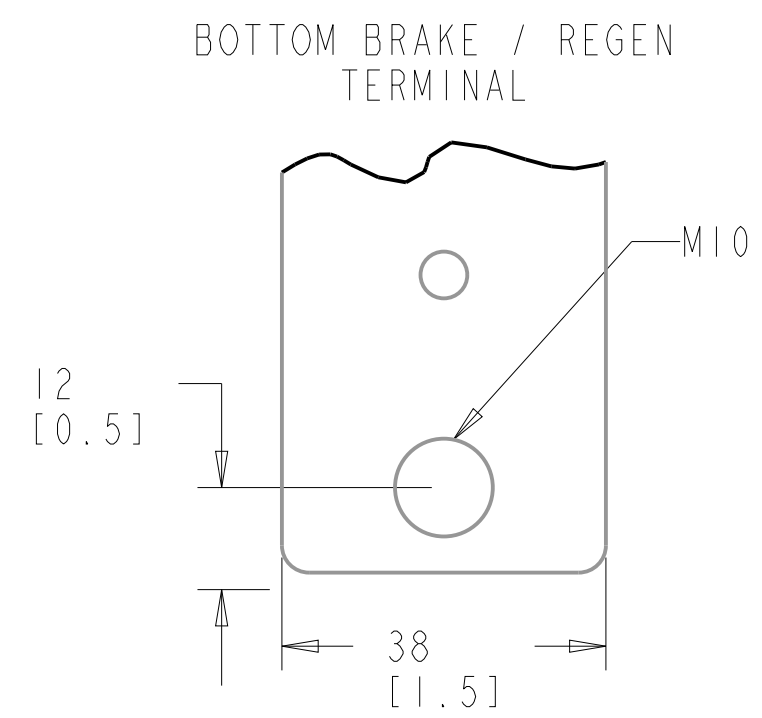
SECTION B-B
MOTOR TERMINALS AND
BRAKE / REGEN TERMINALS



EARTHING / GROUNDING CONNECTIONS



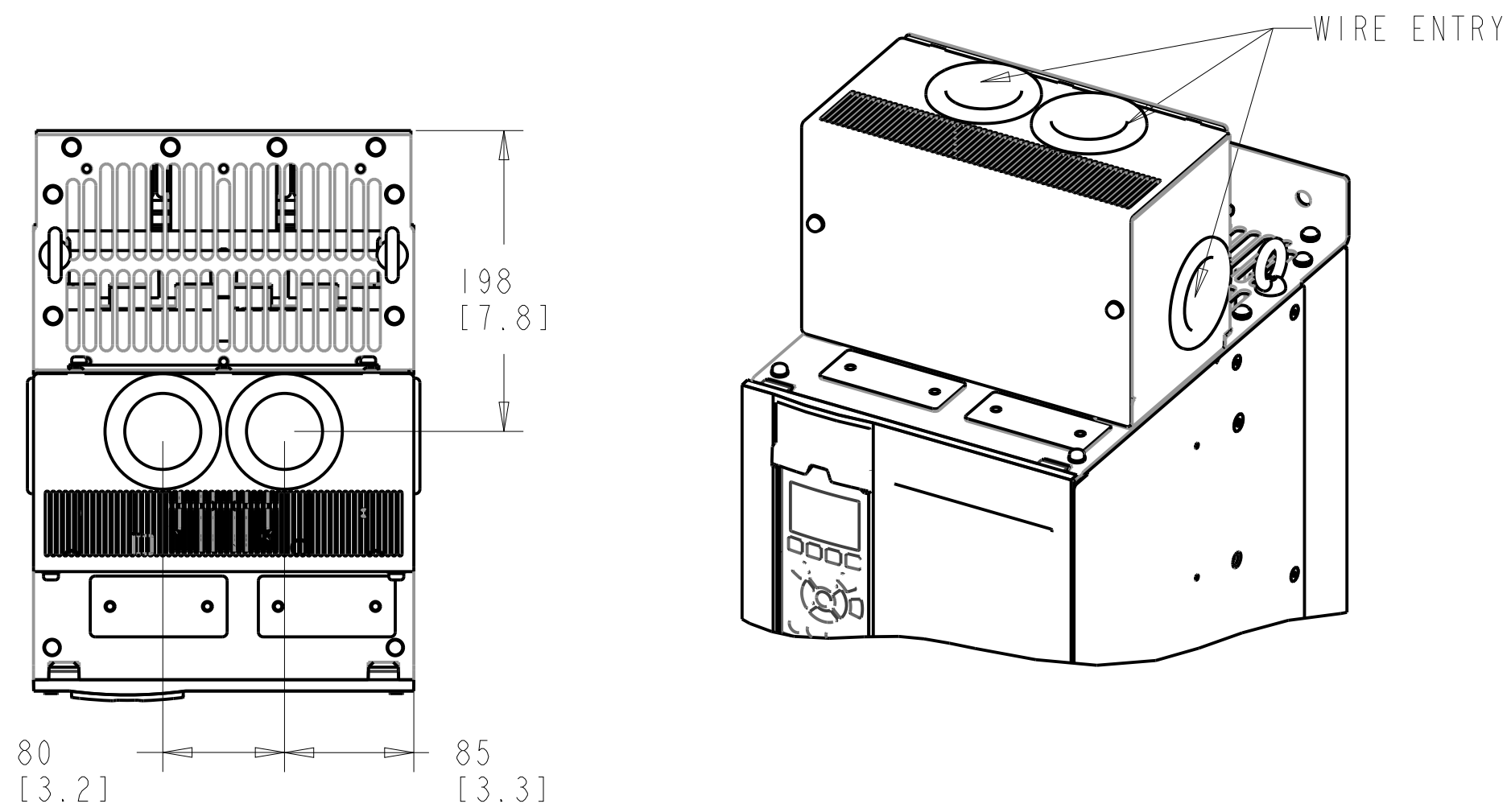
BOTTOM VIEW



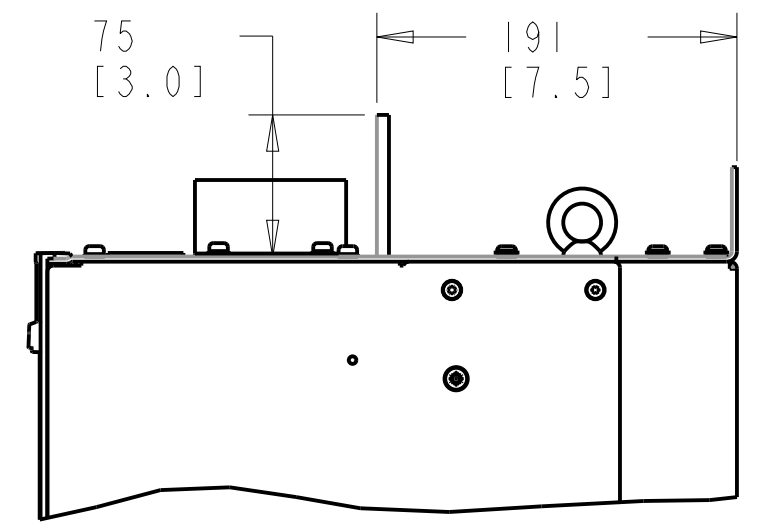
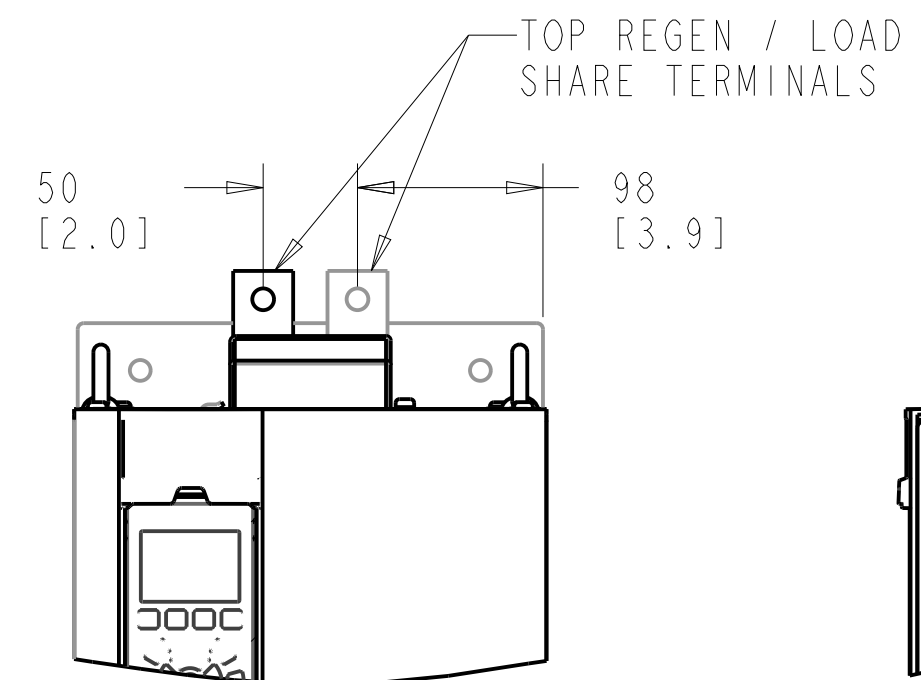
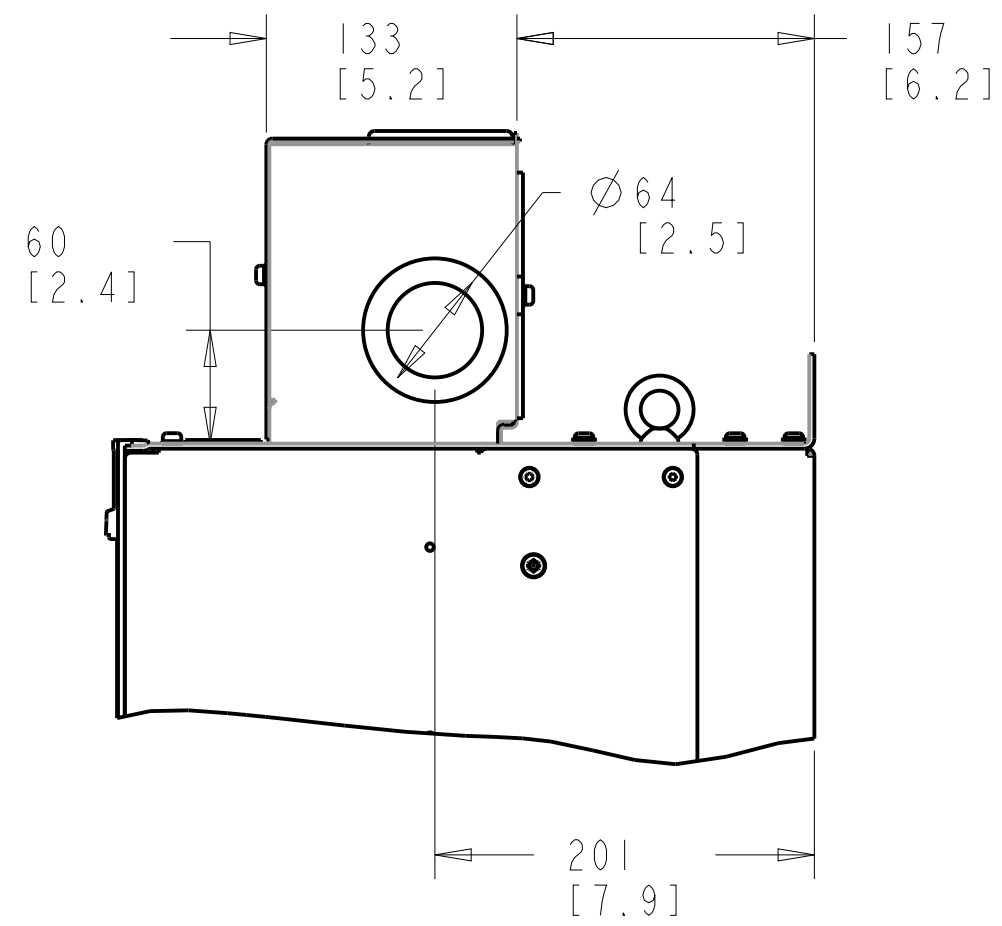
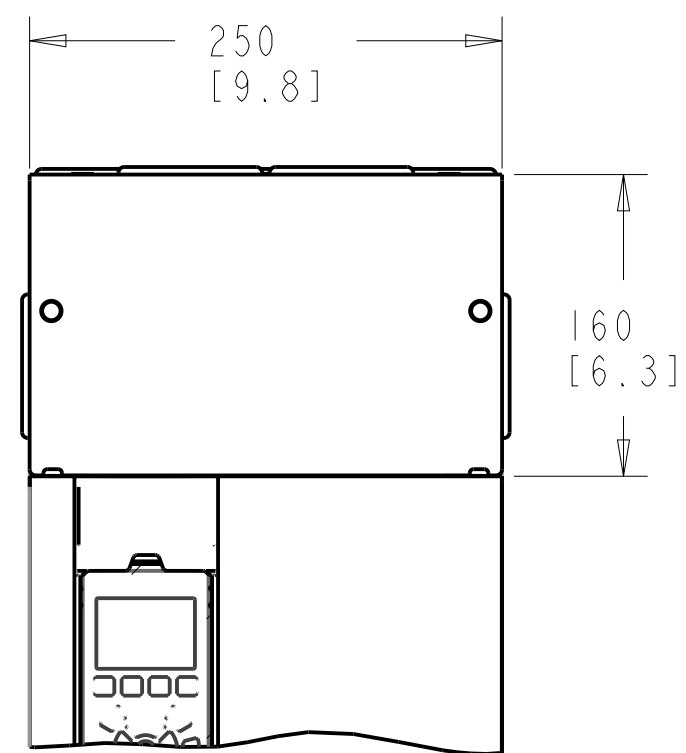
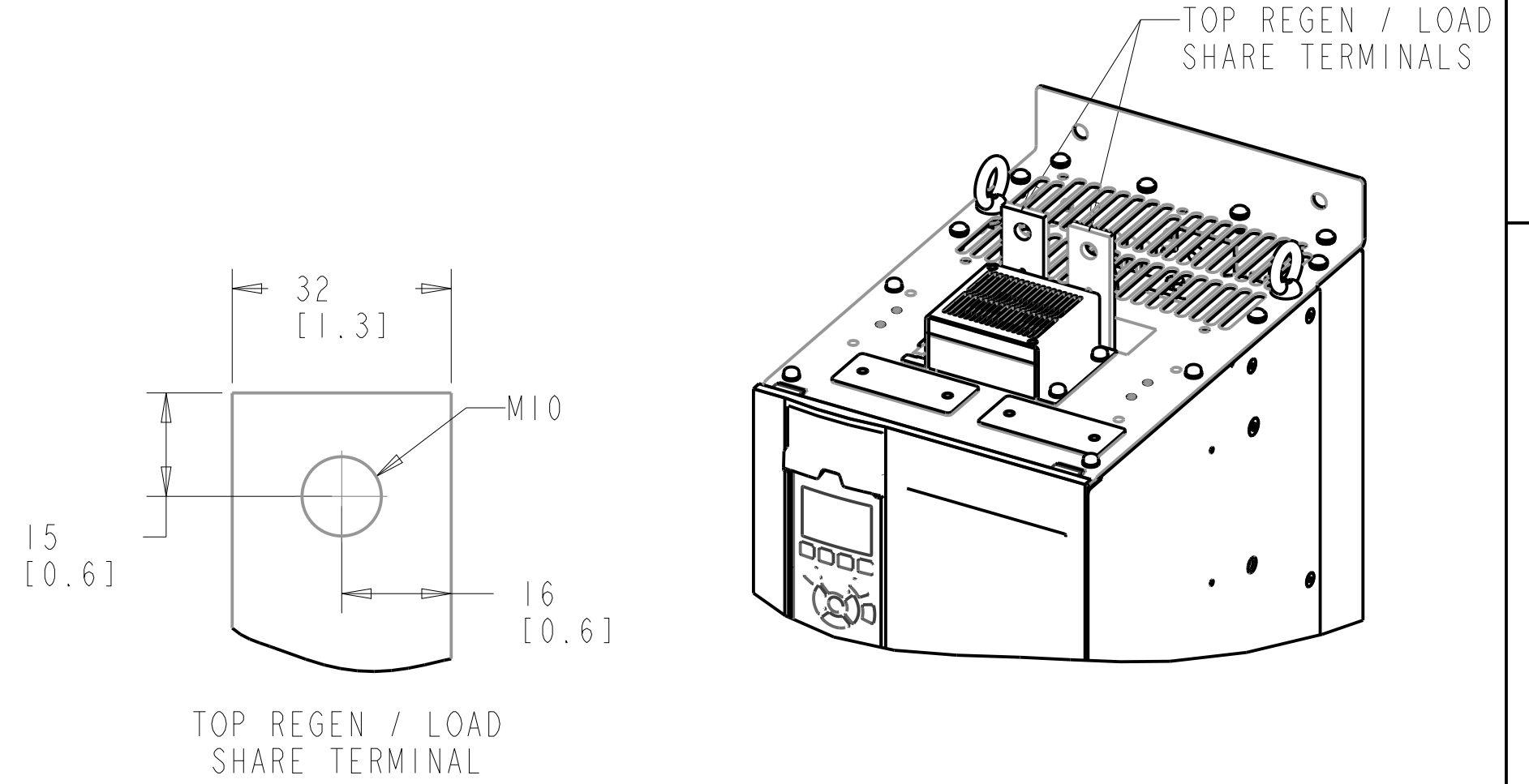
- NOTES:
1. PLACE CABLES THROUGH MARKED AREAS
 2. 95MM² (3/0) MAX WIRE SIZE

TITLE INSTALLATION DRAWING, D3H, 1P20/CHASSIS		
SIZE C	MODEL	REV 003
SCALE 0.333	DRAWING NO. 177R0339	SHEET 2 OF 4

TOP REGEN / LOAD SHARE
TERMINALS WITH OPTION COVER



TOP REGEN / LOAD SHARE TERMINALS
(WITHOUT TERMINAL COVER INSTALLED)



TITLE		
INSTALLATION DRAWING, D3H, IP20/CHASSIS		
SIZE	MODEL	REV
C		003
SCALE	DRAWING NO.	SHEET
0.250	177R0339	3 OF 4

THE TABLES BELOW MAY BE USED TO CONFIRM THE CORRECT FRAME SIZE AND DRAWING FOR A SPECIFIC DRIVE RATING (POWER AND VOLTAGE). THIS DRAWING IS FOR D3H FRAMES, THE TABLES BELOW IDENTIFY WHICH DRIVES ARE REPRESENTED BY THIS DRAWING.

THE TABLE BELOW CAN BE USED TO DETERMINE THE FRAME SIZE IF THE SPECIFIC MODEL/TYPECODE IS KNOWN.

KW RATED DRIVES							
KW HIGH OVERLOAD	45	55	75	90	110	132	160
KW NORMAL OVERLOAD	55	75	90	110	132	160	200
400V			75	D3H	D3H	D3H	
500V					D3H	D3H	D3H
525V	D3H		D3H	D3H	D3H		
690V		D3H	D3H	D3H	D3H	D3H	

HORSEPOWER RATED DRIVES						
HP HIGH OVERLOAD	60	75	100	125	150	200
HP NORMAL OVERLOAD	75	110	125	150	200	250
460V				D3H	D3H	D3H
575V	D3H	D3H	D3H	D3H	D3H	D3H

PLATFORM	VOLTAGE	MODEL/TYPECODE	FRAME(IP20)
HVAC	T4	FC-102N110T4	D3H
		FC-102N132T4	
		FC-102N160T4	
	T7	FC-102N75KT7	
		FC-102N90KT7	
		FC-102N110T7	
		FC-102N132T7	
		FC-102N160T7	
AQUA	T4	FC-202N110T4	
		FC-202N132T4	
		FC-202N160T4	
	T7	FC-202N75KT7	
		FC-202N90KT7	
		FC-202N110T7	
AUTOMATION	T5	FC-302N90KT5	
		FC-302N110T5	
		FC-302N132T5	
	T7	FC-302N55KT7	
		FC-302N75KT7	
		FC-302N90KT7	
		FC-302N110T7	
		FC-302N132T7	

TITLE INSTALLATION DRAWING, D3H, IP20/CHASSIS			
SIZE C	MODEL	REV 003	
SCALE 0.333	DRAWING NO. 177R0339	SHEET 4 OF 4	