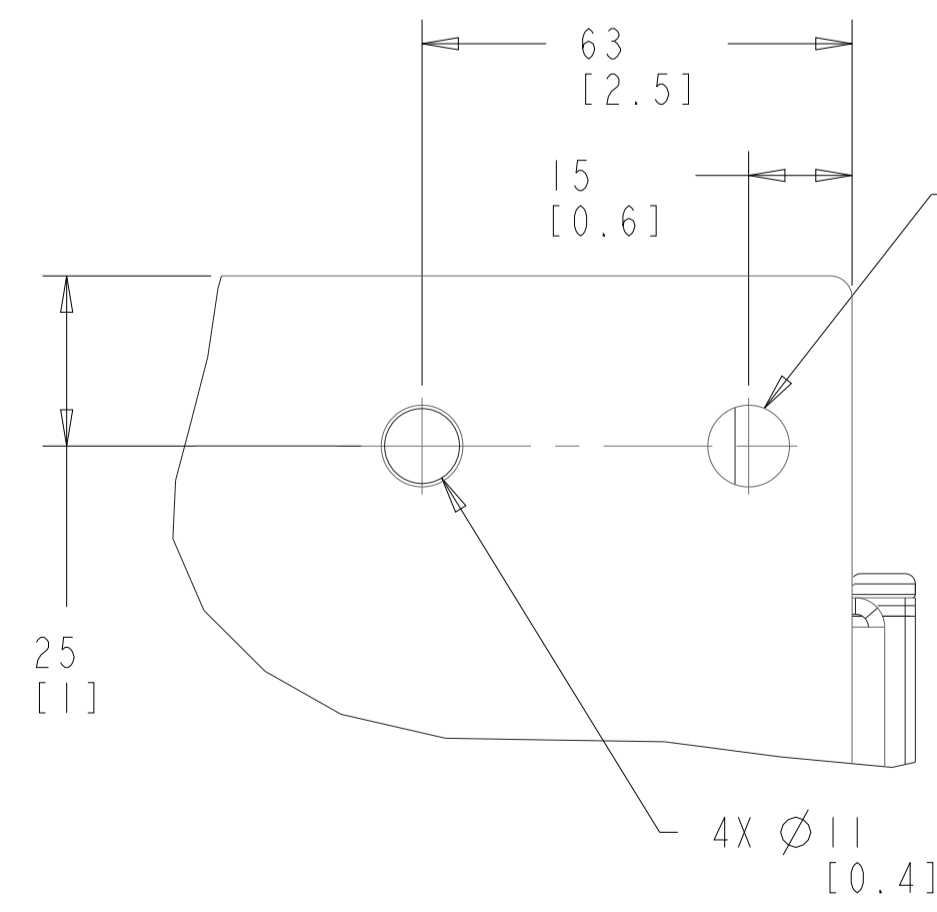
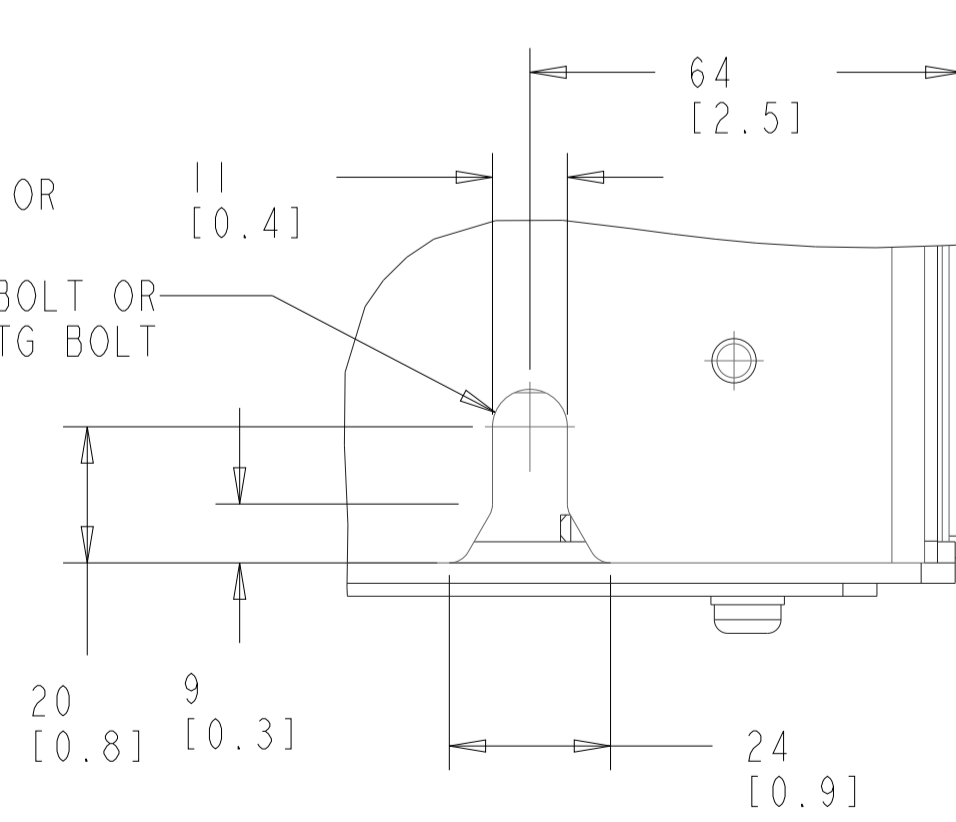


DETAIL A
TOP MOUNTING HOLES



DETAIL B
BOTTOM MOUNTING HOLES



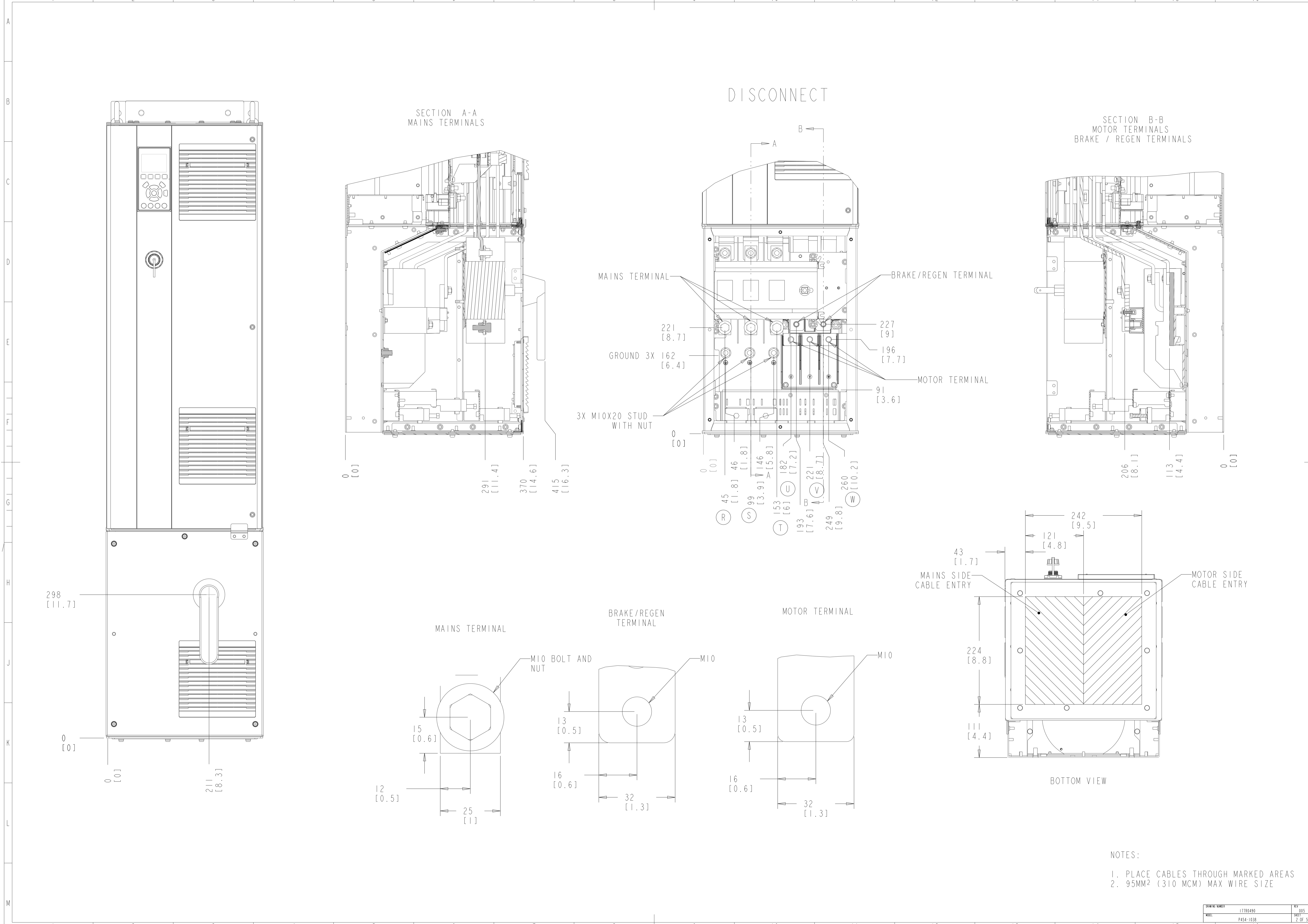
USE M10 MTG BOLT OR 3/8" MTG BOLT
USE M10 MTG BOLT OR 3/8" MTG BOLT

NOTE:
REFER SHEET 2 & 3 FOR EXTENDED OPTION CABINET BUSBAR CONNECTION POINT.
REFER SHEET 4 FOR WIRING KIT OPTION BUSBAR CONNECTION POINT.

1. MAX AIRFLOW (BACKCHANNEL) - 7 M³ / MIN (250 CFM)
2. MAX AIRFLOW (CABINET) - 1.7 M³ / MIN (60 CFM)
3. MAX WEIGHT = 99 KG (219 LBS)
4. CENTER OF GRAVITY:
APPROXIMATE LOCATION ONLY, LOCATION MAY VARY BASED ON POWER RATING AND OPTIONS ORDERED.

⚠ CRITICAL CHARACTERISTICS
▽ KEY CHARACTERISTICS
⊙ INSPECTION
MUST COMPLY TO ROHS DIRECTIVE 2011/65/EU

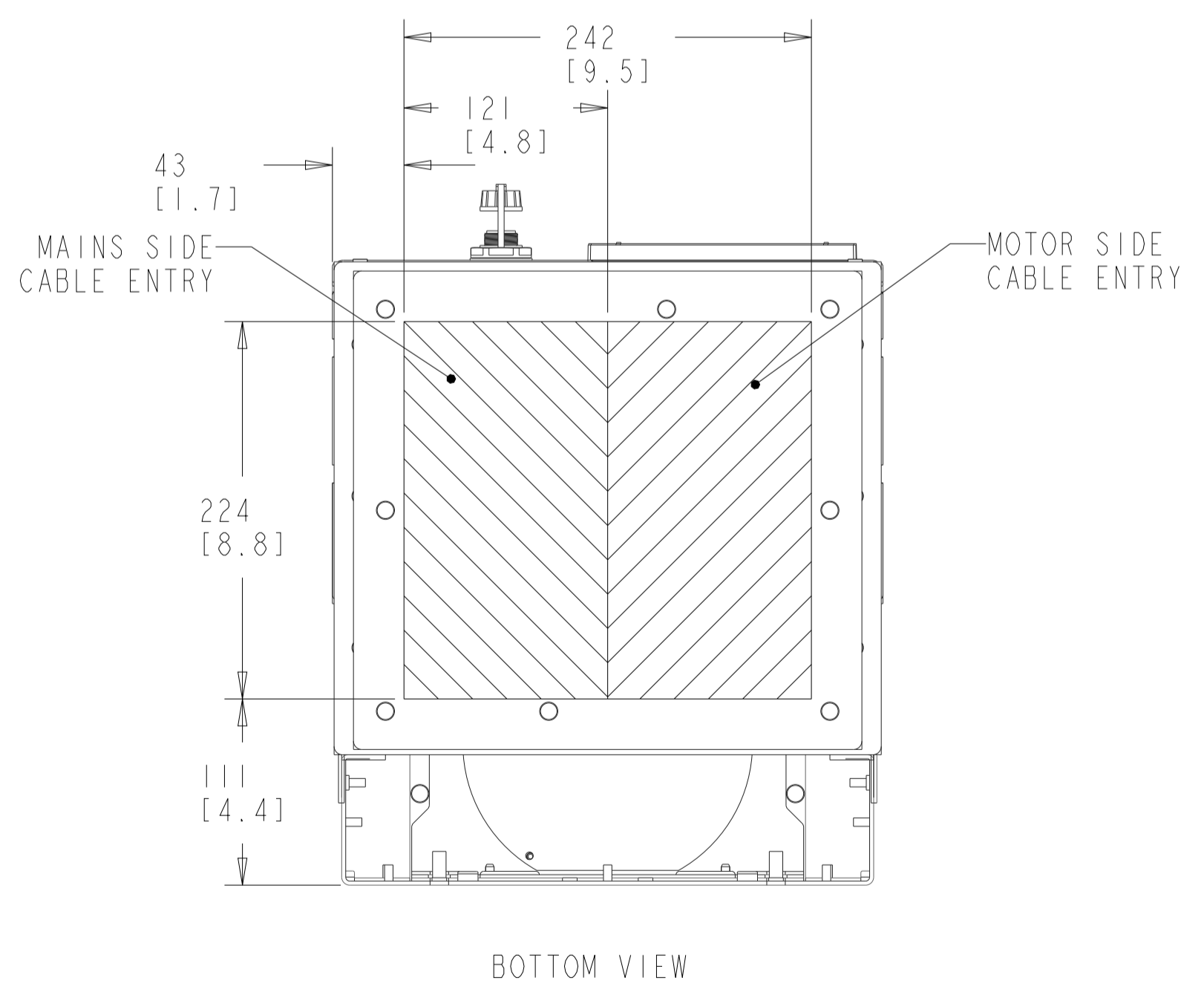
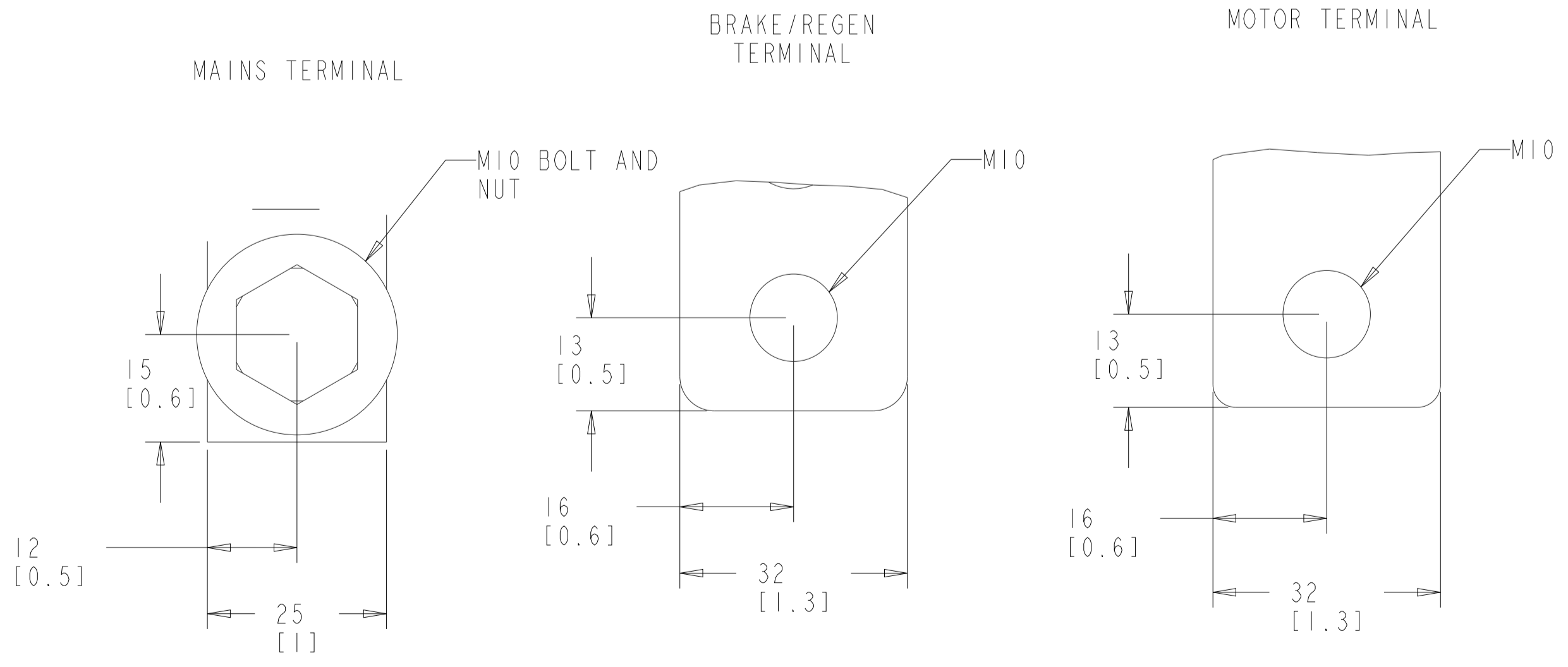
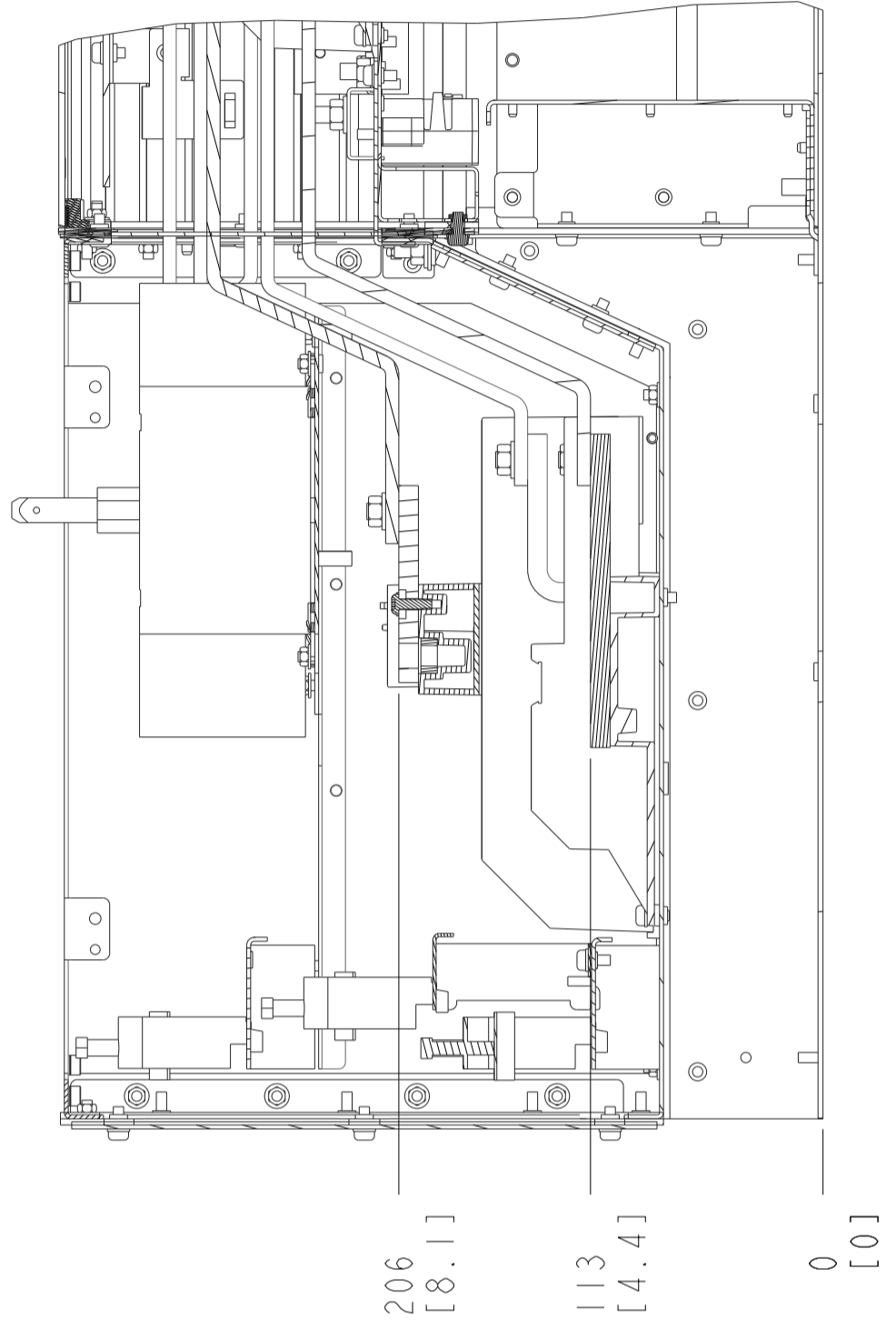
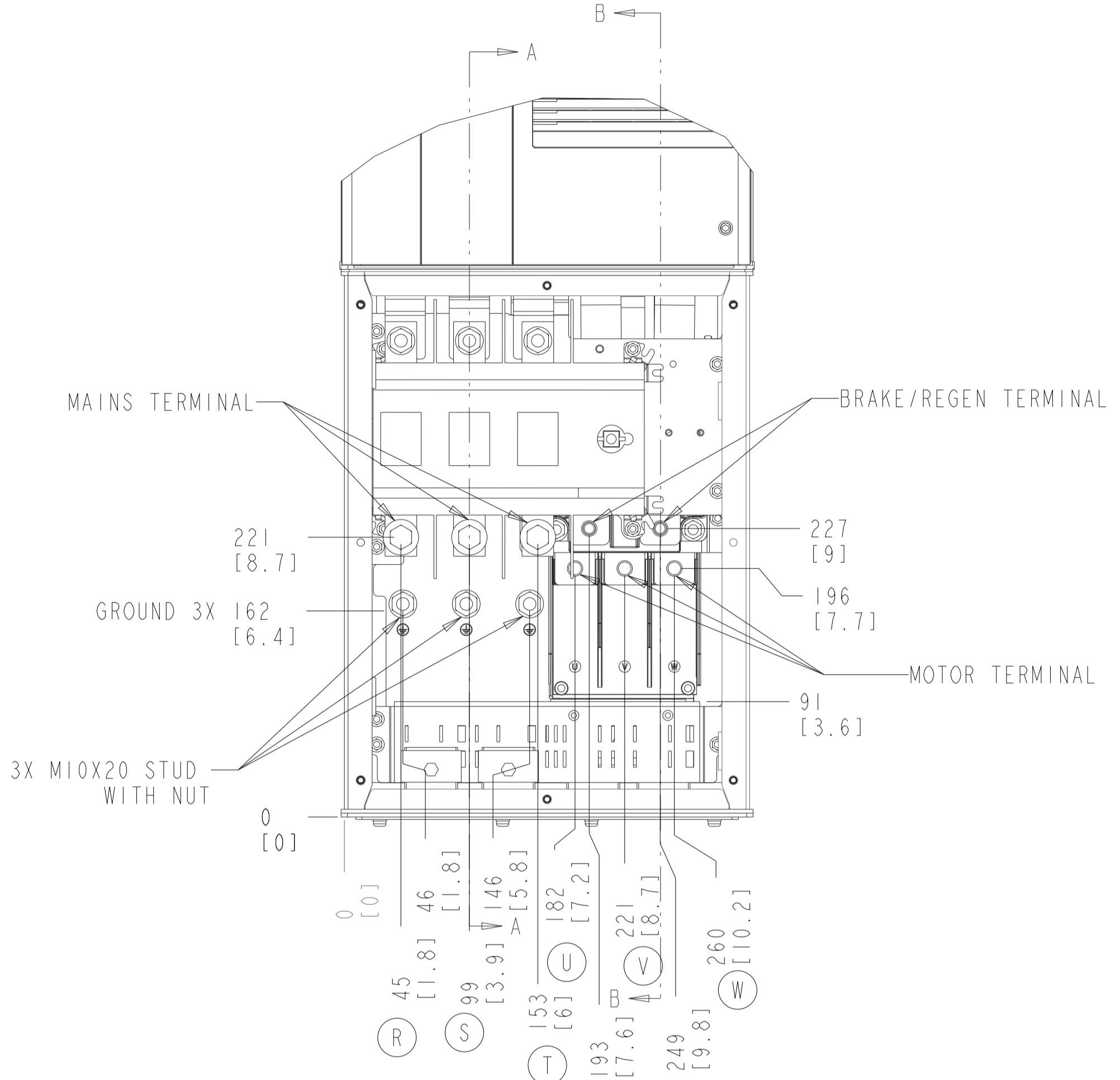
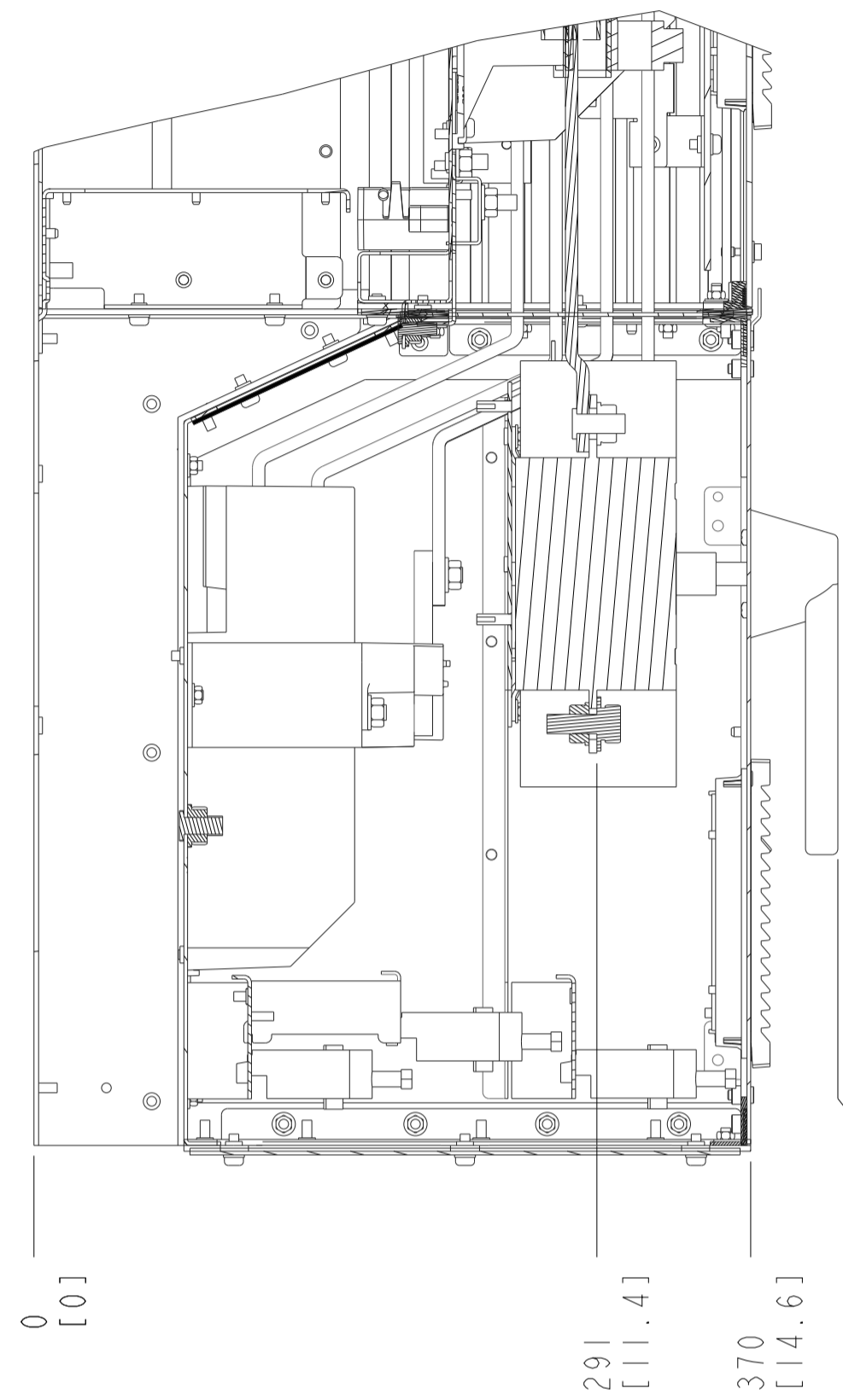
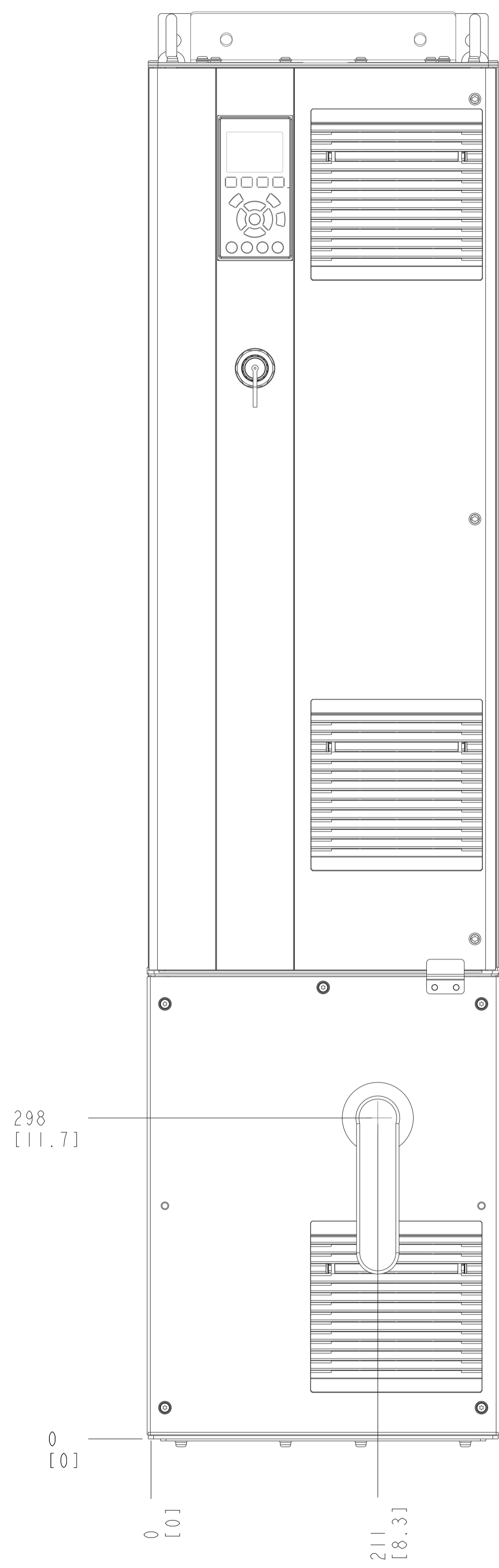
INTERPRET DIM. & TOL. PER ASME Y14.5M-1994 ALL DIMENSIONS ARE IN MILLIMETERS TOLERANCES UNLESS OTHERWISE SPECIFIED ±0.1, 0.2, 0.5, 1.0		THIRD ANGLE PROJECTION	SCALE 0.200	SIZE A1	MATERIAL N/A
— PDM CONTROLLED DRAWING — NOT VALID WITHOUT FROZEN DATE IN ID STAMP				FINISH N/A	
CHANGED BC 08/23/16	DESIGNED ND 04/09/12			DESCRIPTION INSTALLATION DRAWING, DSH, IP21/54	
CONFIDENTIAL - PROPERTY OF DANFOSS A/S NORBORG, DENMARK. NOT TO BE HANDED OVER TO BE COPIED OR BE USED BY A THIRD PARTY. TWO OR THREE DIMENSIONAL REPRODUCTION OF CONTENTS TO BE AUTHORIZED BY DANFOSS A/S.		DRAWING NUMBER 177R0490	REV 005	SHEET 1 OF 3	



DISCONNECT

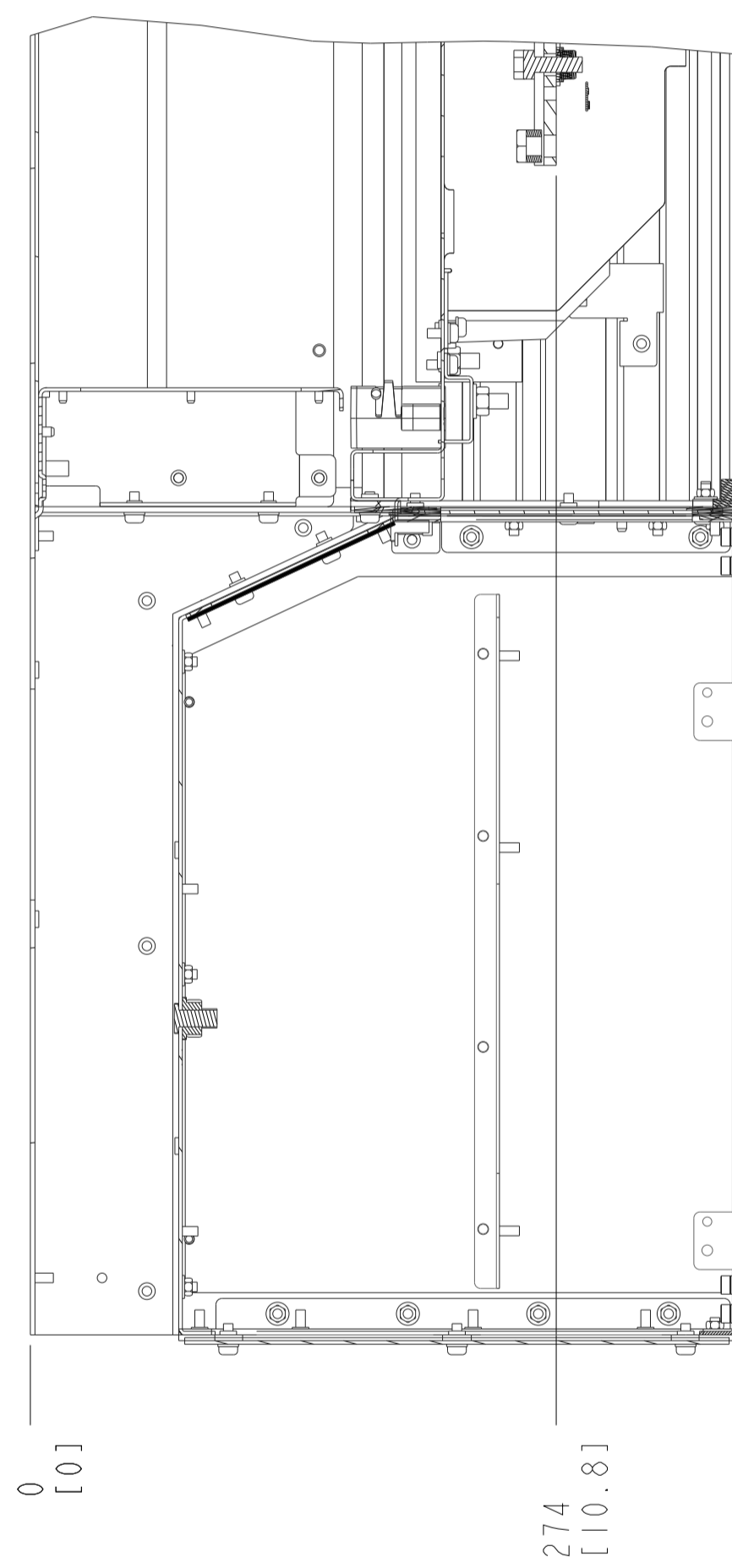
SECTION A-A
MAINS TERMINALS

SECTION B-B
MOTOR TERMINALS
BRAKE / REGEN TERMINALS

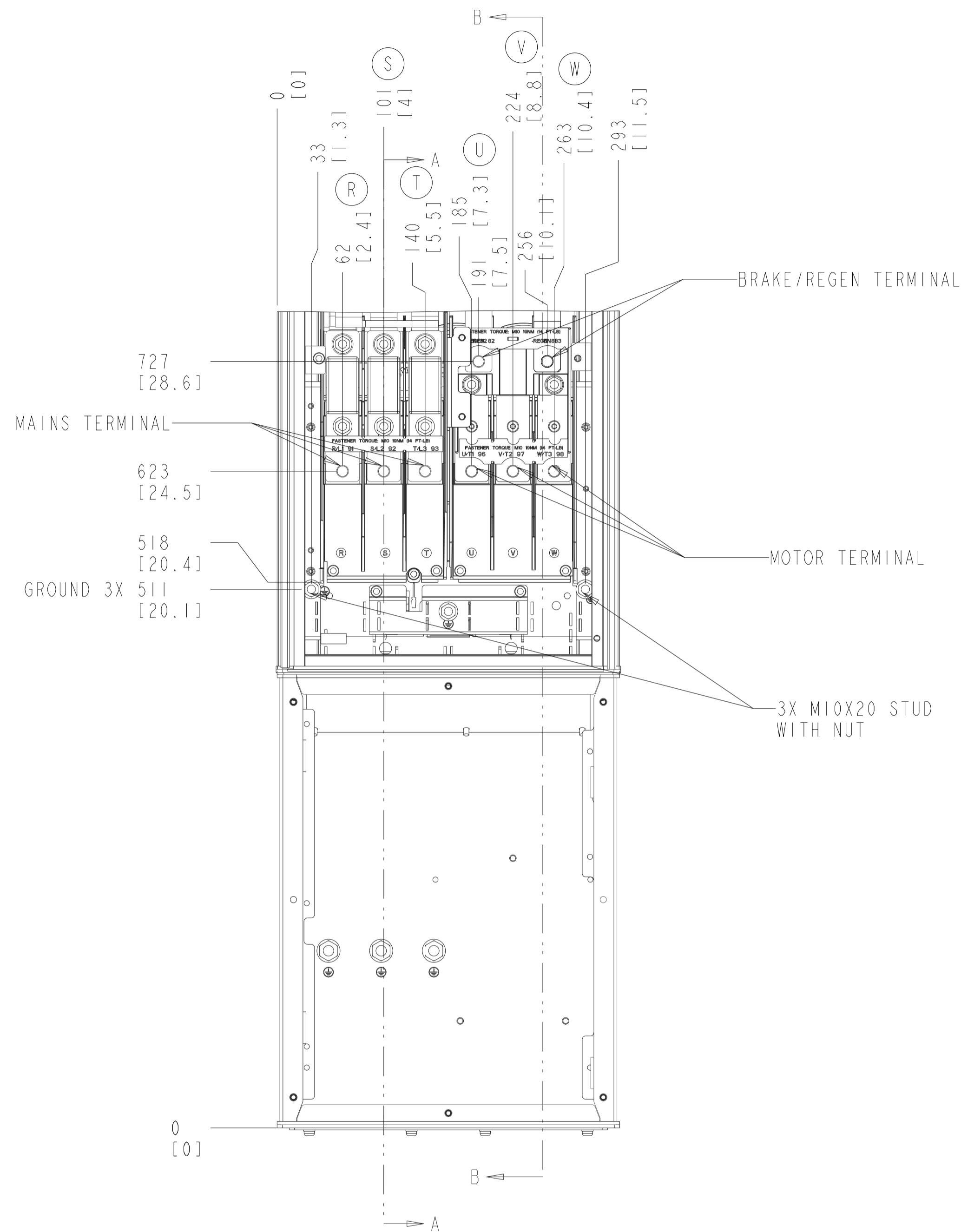


- NOTES:
1. PLACE CABLES THROUGH MARKED AREAS
 2. 95MM² (310 MCM) MAX WIRE SIZE

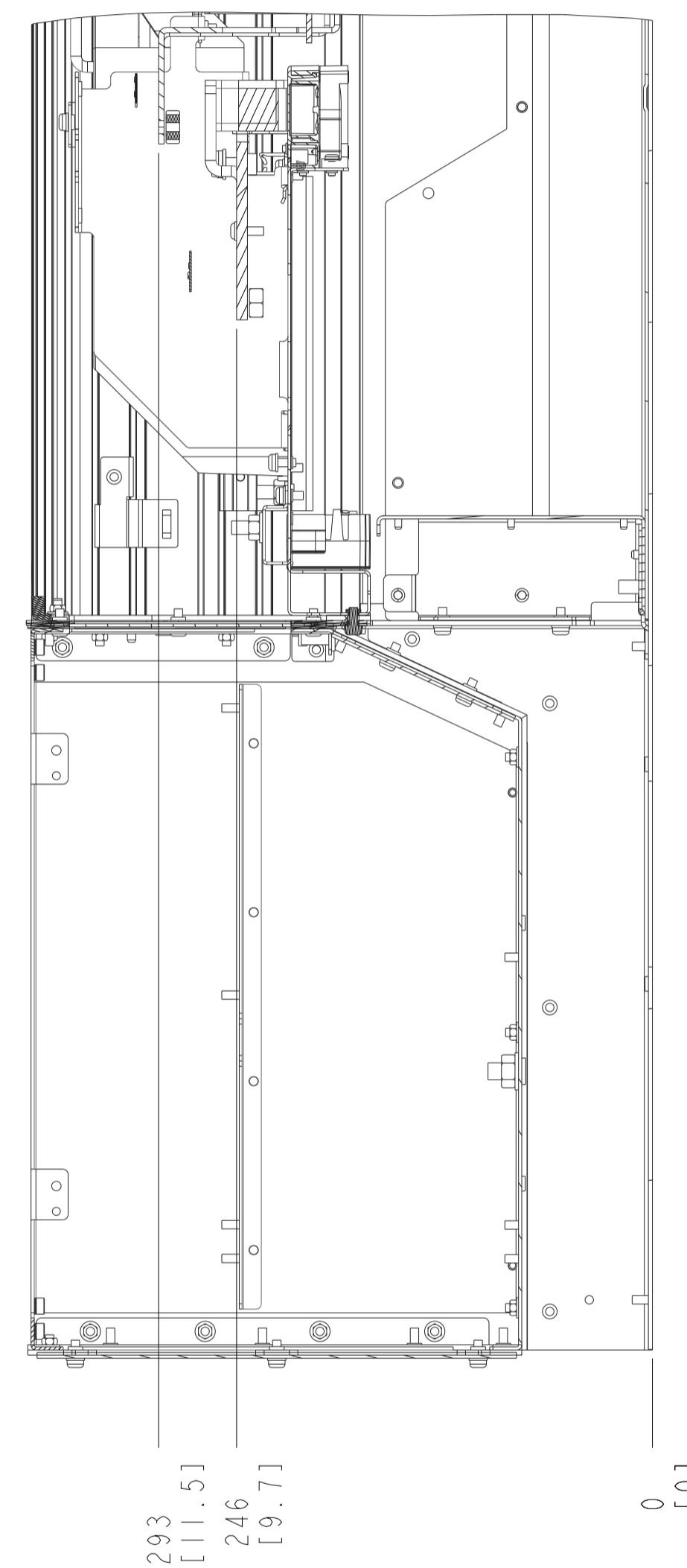
SECTION A-A
MAINS TERMINALS



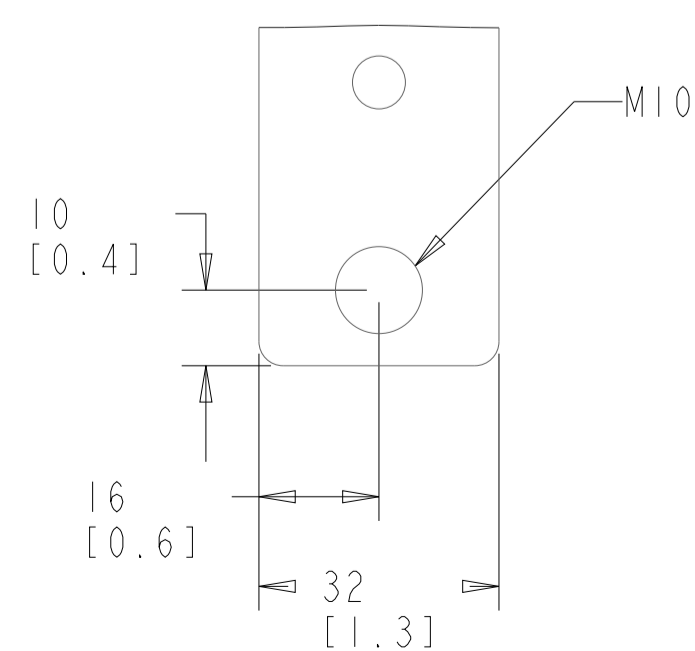
BRAKE ONLY



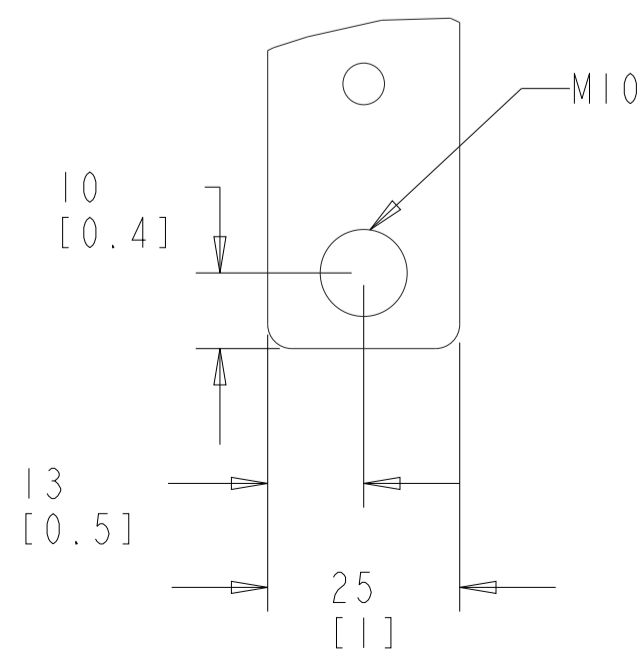
SECTION B-B
MOTOR TERMINALS
BRAKE / REGEN TERMINALS



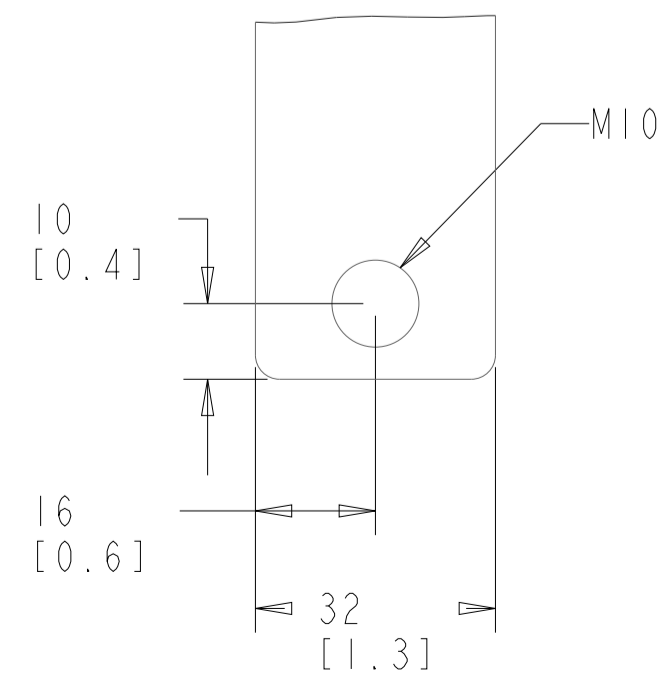
MAINS TERMINAL



BRAKE/REGEN
TERMINAL

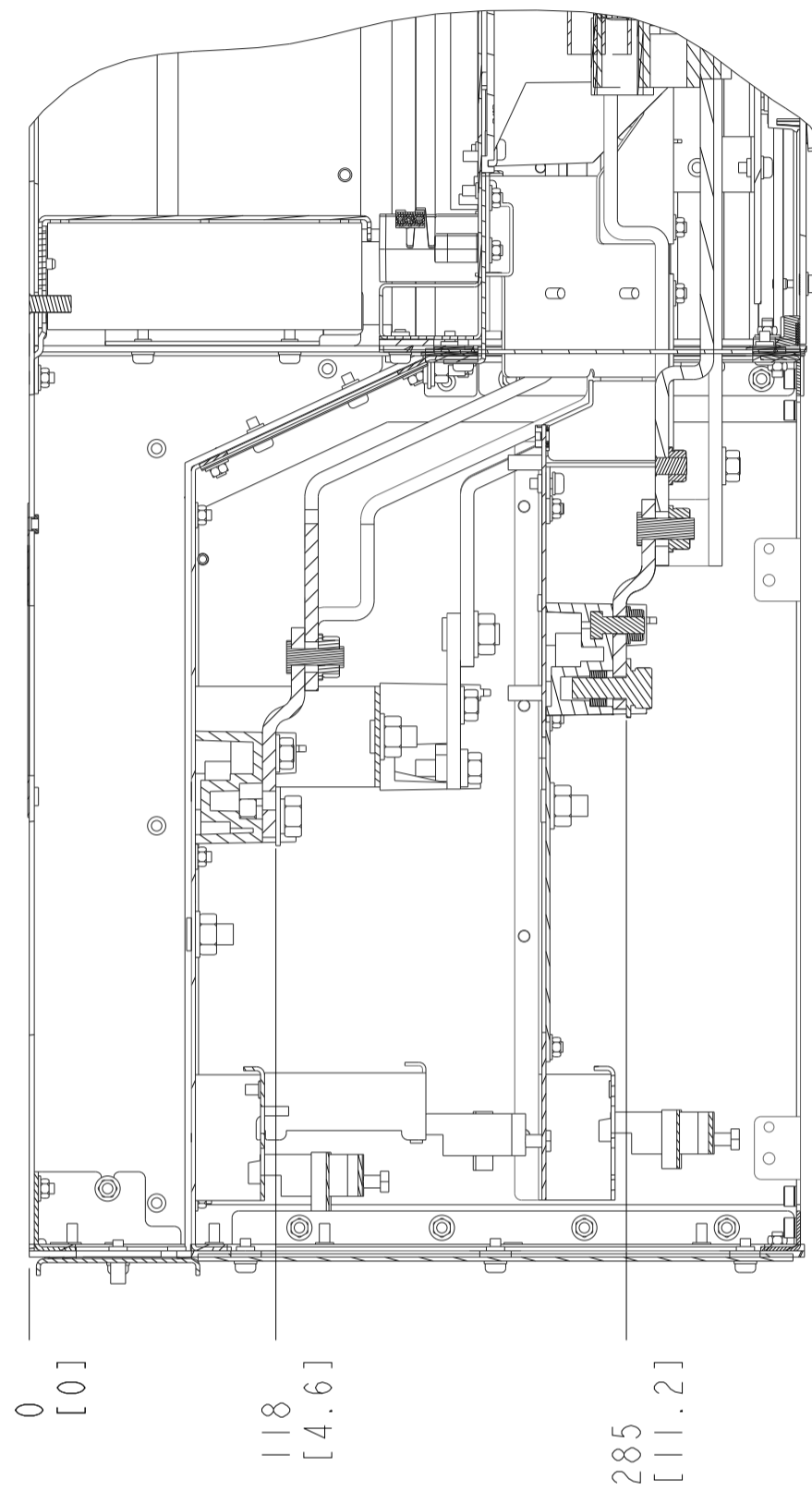


MOTOR TERMINAL

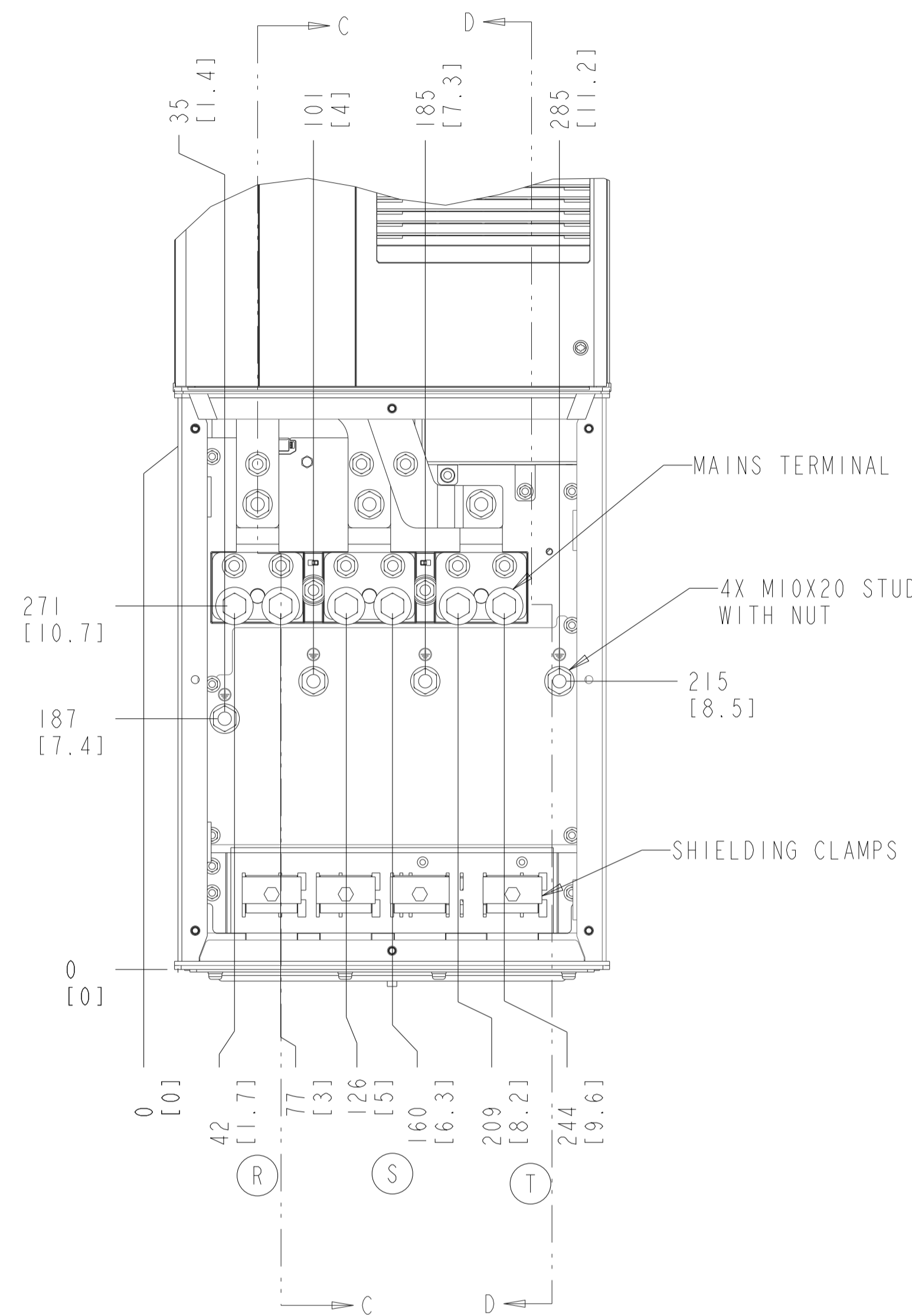


NOTES:
1. 95MM² (310 MCM) MAX WIRE SIZE

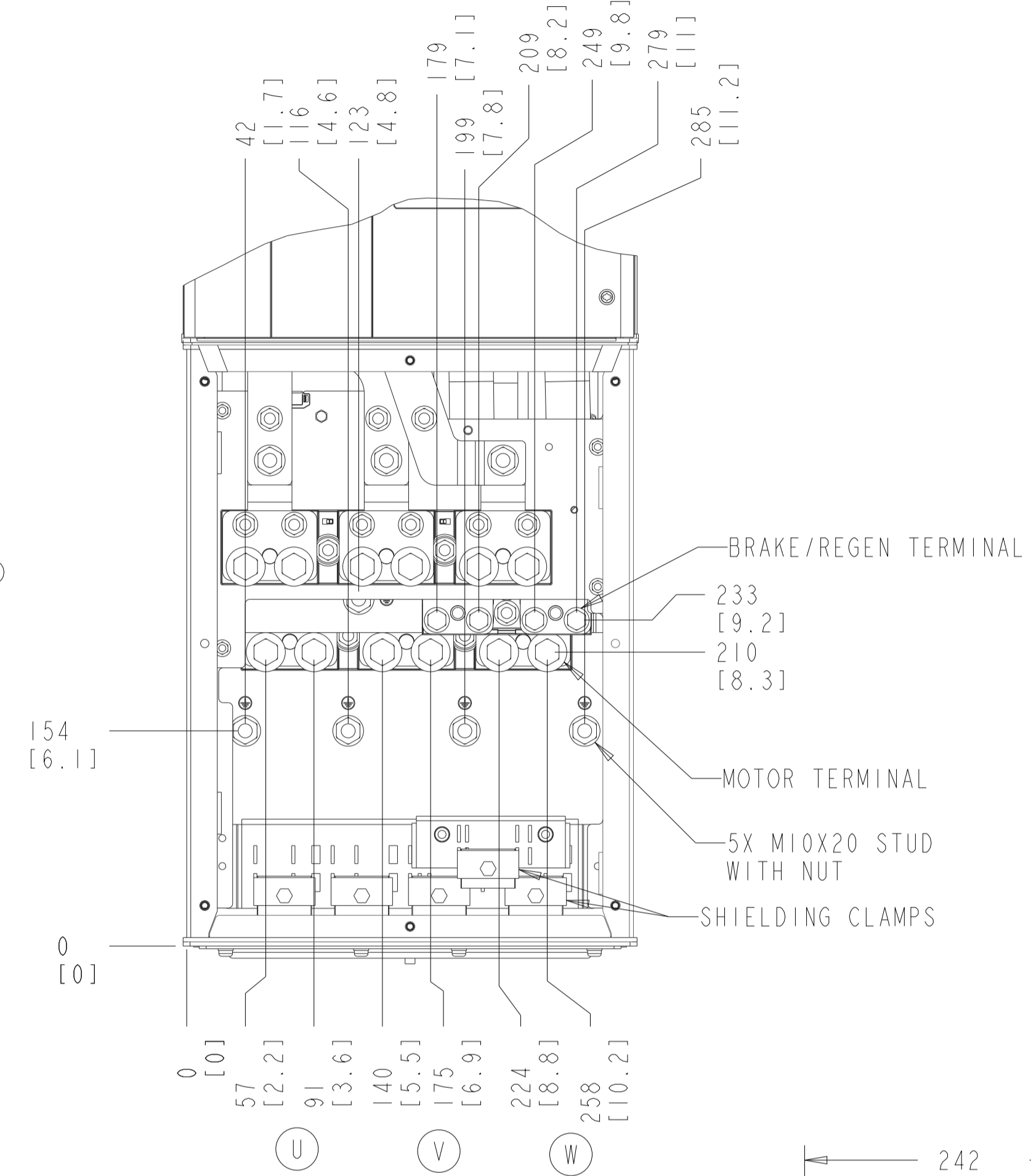
SECTION C-C
MAINS TERMINAL
MOTOR TERMINAL



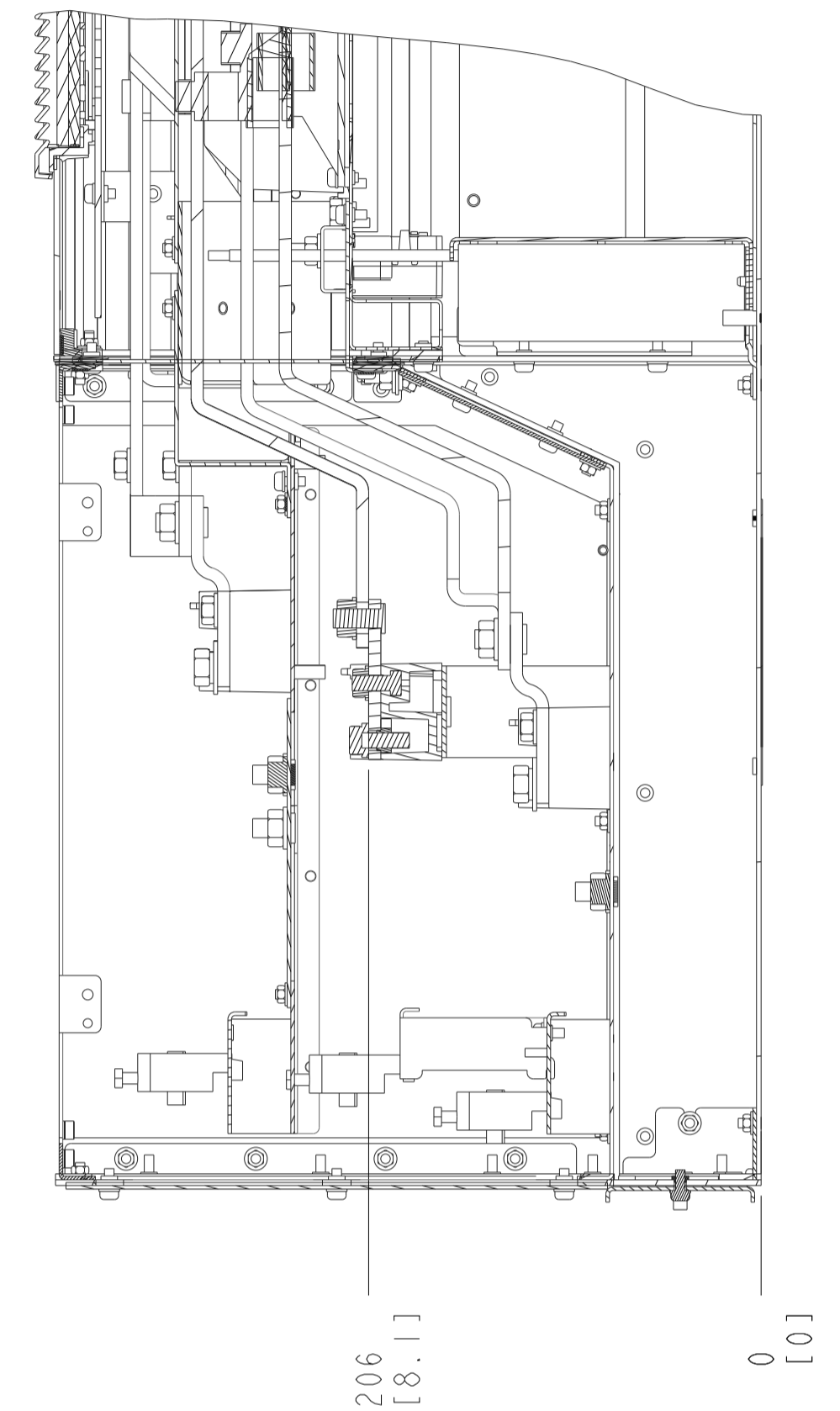
EXTENDED WIRING KIT
MAINS TERMINAL



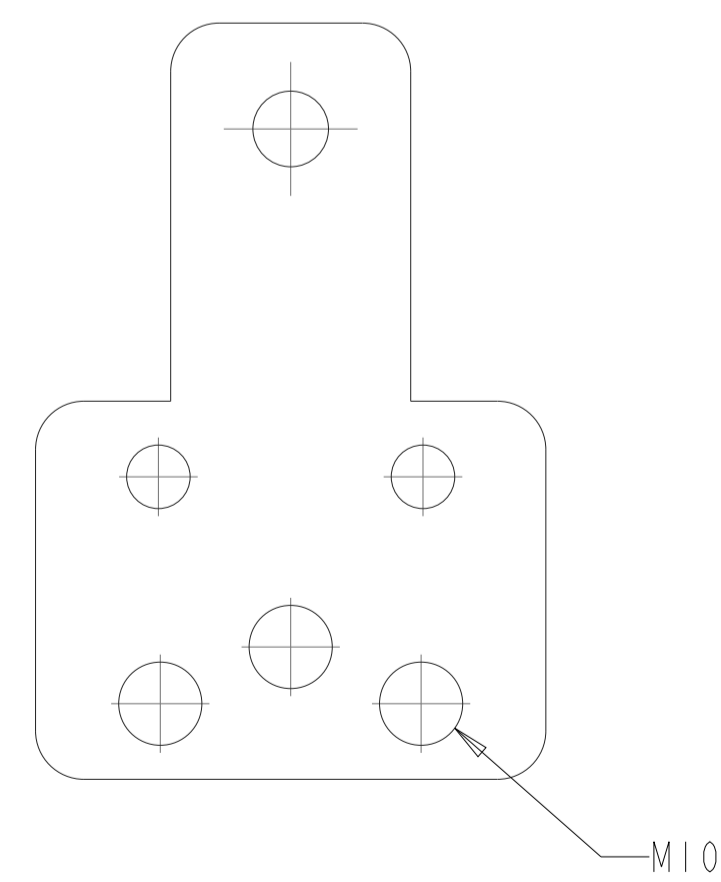
EXTENDED WIRING KIT
MOTOR TERMINAL
BRAKE TERMINAL



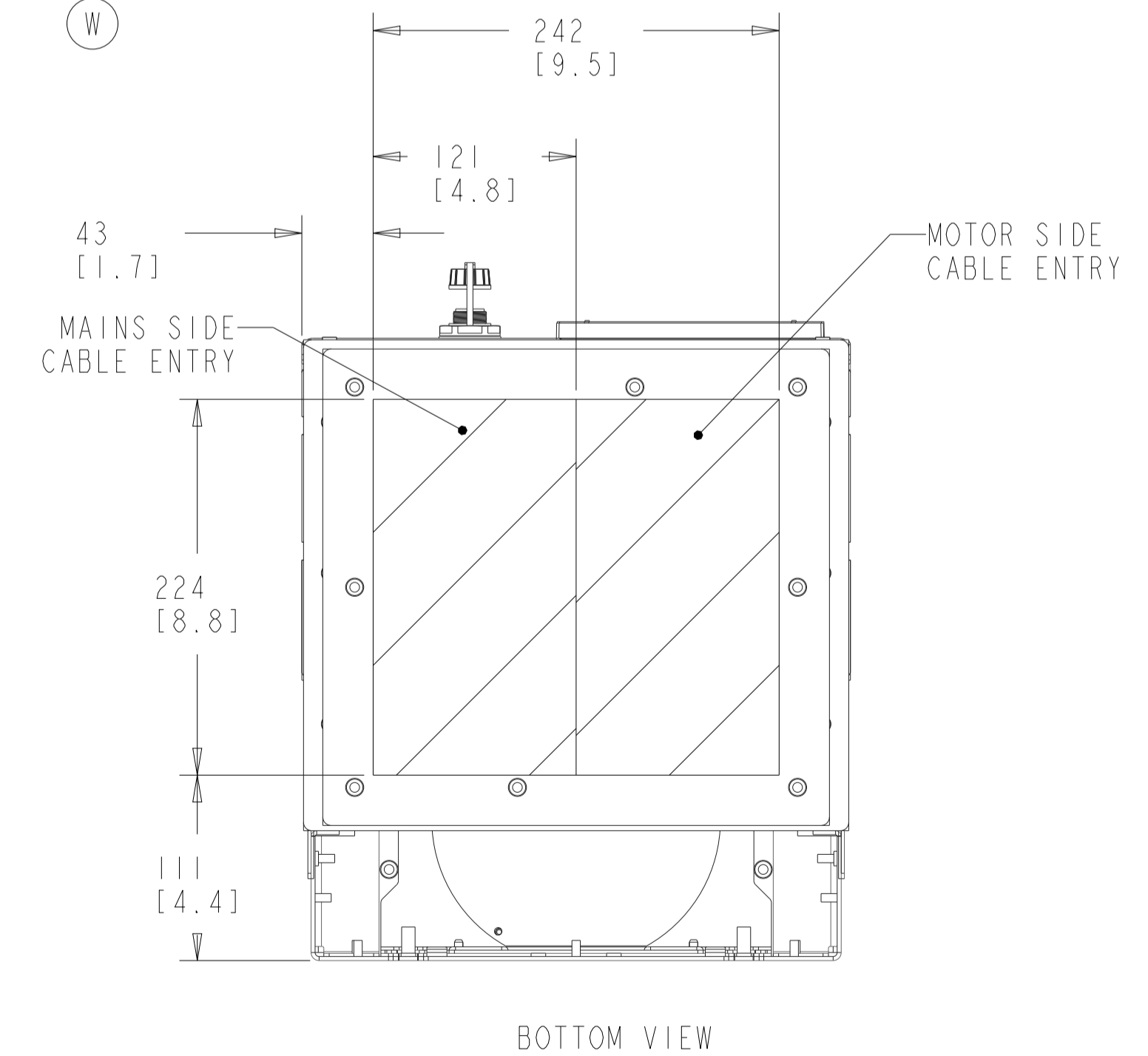
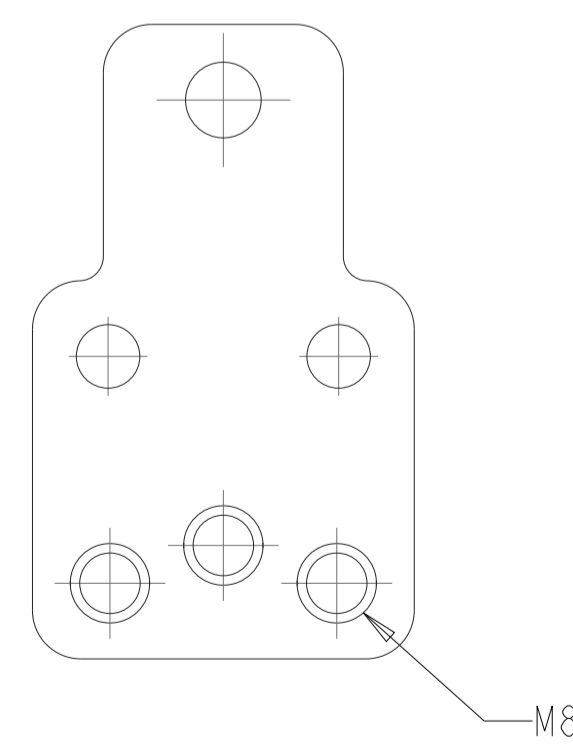
SECTION D-D
BRAKE TERMINAL



MAINS TERMINAL
MOTOR TERMINAL



BRAKE/REGEN TERMINAL



NOTES:

1. PLACE CABLES THROUGH MARKED AREAS.
2. 95MM² (3/0 MCM) MAX WIRE SIZE FOR TWO CABLES PER PHASE.
3. 50MM² (1/0 MCM) MAX WIRE SIZE FOR FOUR CABLES PER PHASE.

THE TABLES BELOW ARE USED TO DETERMINE THE FRAME SIZE FOR A GIVEN POWER AND VOLTAGE RATING, WITH A DISCONNECT OR BRAKE.

- 1) IDENTIFY THE POWER IN NORMAL OVERLOAD (N.O.) OR HIGH OVERLOAD (H.O.), KILOWATTS (KW) OR HORSEPOWER (HP).
 - 2) READ DOWN THE COLUMN TO THE ROW WITH THE CORRECT VOLTAGE TO IDENTIFY THE FRAME SIZE.
- THIS DRAWING IS FOR D5H FRAMES,

THE TABLE BELOW CAN BE USED TO DETERMINE THE FRAME SIZE IF THE SPECIFIC MODEL/TYPE CODE WITH A DISCONNECT OR BRAKE CHOPPER IS KNOWN.

KW RATED DRIVES					
KW HIGH OVERLOAD	75	90	110	132	160
KW NORMAL OVERLOAD	90	110	132	160	200
400V		D5H	D5H	D5H	
500V			D5H	D5H	D5H
525V	D5H	D5H	D5H	D5H	
690V		D5H	D5H	D5H	

HORSEPOWER RATED DRIVES				
HP HIGH OVERLOAD	100	125	150	200
HP NORMAL OVERLOAD	125	150	200	250
460V		D5H	D5H	D5H
575V	D5H	D5H	D5H	

PLATFORM	VOLTAGE	MODEL/TYPECODE	FRAME(IP21/IP54)
HVAC	T4	FC-102N110T4	D5H
		FC-102N132T4	
		FC-102N160T4	
	T7	FC-102N110T7	
		FC-102N132T7	
		FC-102N160T7	
AQUA	T4	FC-202N110T4	
		FC-202N132T4	
		FC-202N160T4	
	T7	FC-202N110T7	
		FC-202N132T7	
		FC-202N160T7	
AUTOMATION	T5	FC-302N90KT5	
		FC-302N110T5	
		FC-302N132T5	
	T7	FC-302N90KT7	
		FC-302N110T7	
		FC-302N132T7	