

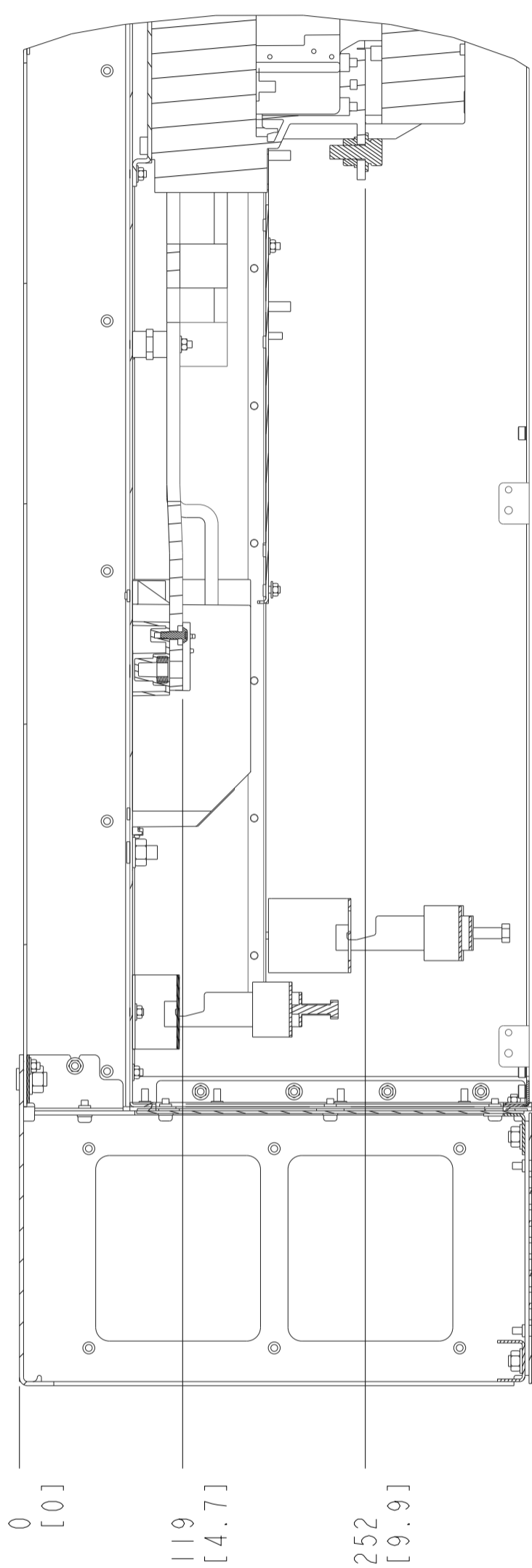
1. MAX AIRFLOW (BACKCHANNEL) - 14 M³ / MIN (500 CFM)
2. MAX AIRFLOW (CABINET) - 3.4 M³ / MIN (120 CFM)
3. MAX WEIGHT = 232 KG (512 LBS)
4. CENTER OF GRAVITY:
APPROXIMATE LOCATION ONLY, LOCATION MAY VARY BASED ON POWER RATING AND OPTIONS ORDERED.

▽ CRITICAL CHARACTERISTICS
 ▽ KEY CHARACTERISTICS
 ○ INSPECTION
 MUST COMPLY TO ROHS DIRECTIVE 2011/65/EU

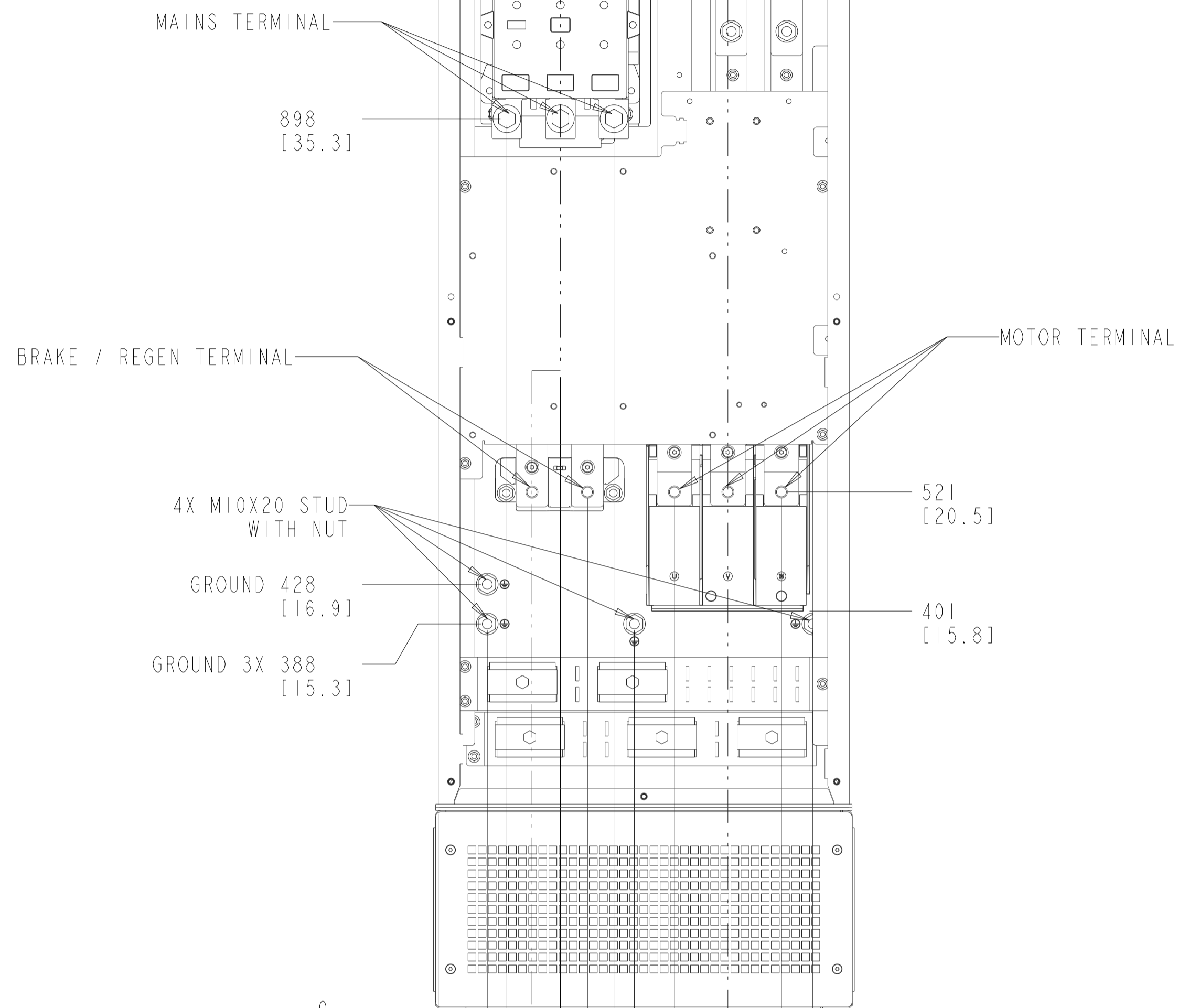
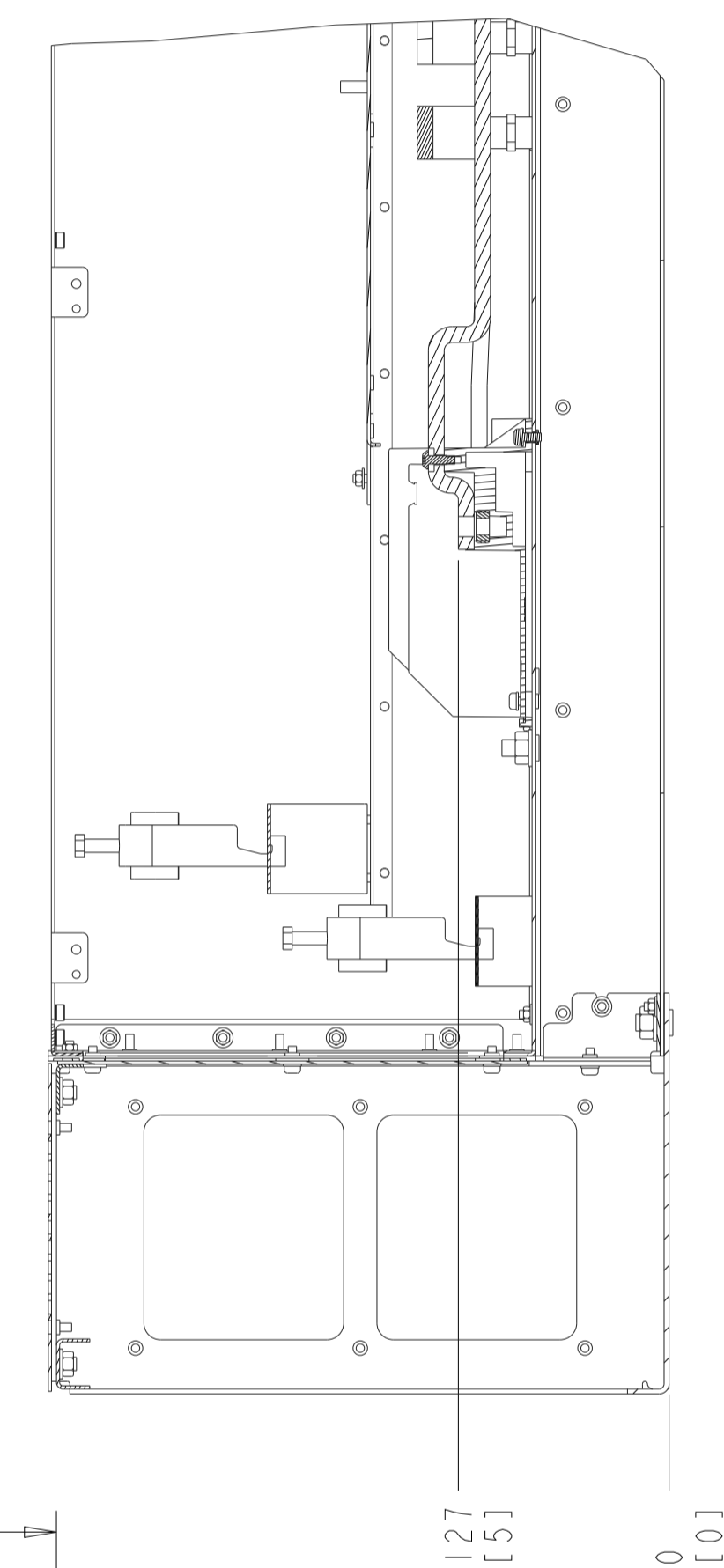
INTERPRET DIM. & TOL. PER ASME Y14.5M-1994		THIRD ANGLE PROJECTION	SCALE	SIZE	MATERIAL	N/A
ALL DIMENSIONS ARE IN MILLIMETERS			0.125	A1	FINISH	N/A
TOLERANCES UNLESS OTHERWISE SPECIFIED					DESCRIPTION	
±0.10 ±0.50 ±1.0				INSTALLATION DRAWING, DBH, 1P21/54		
CONFIDENTIAL - PROPERTY OF DANFOSS A/S NORBORG, DENMARK. NOT TO BE HANDED OVER TO BE COPIED OR BE USED BY A THIRD PARTY. TWO OR THREE DIMENSIONAL REPRODUCTION OF CONTENTS TO BE AUTHORIZED BY DANFOSS A/S.						
DESIGNED	BC	08/24/16	DRAWING NUMBER		177R0493	REV 002
CHECKED	ND	03/28/12	SHEET		P454-1042	1 OF 6

CONTACTOR ONLY

SECTION A-A
MAINS TERMINALS
BRAKE/REGEN TERMINALS



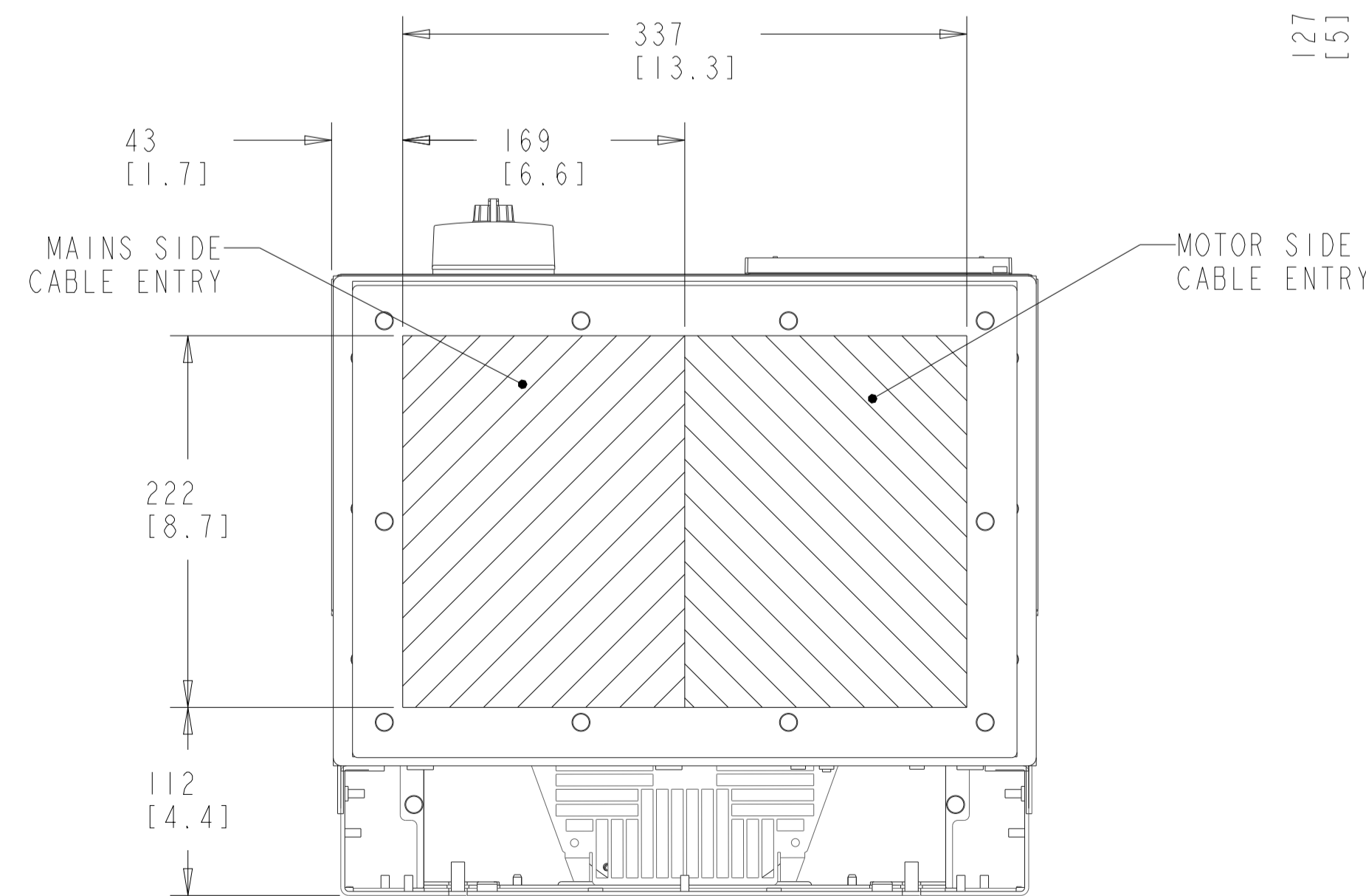
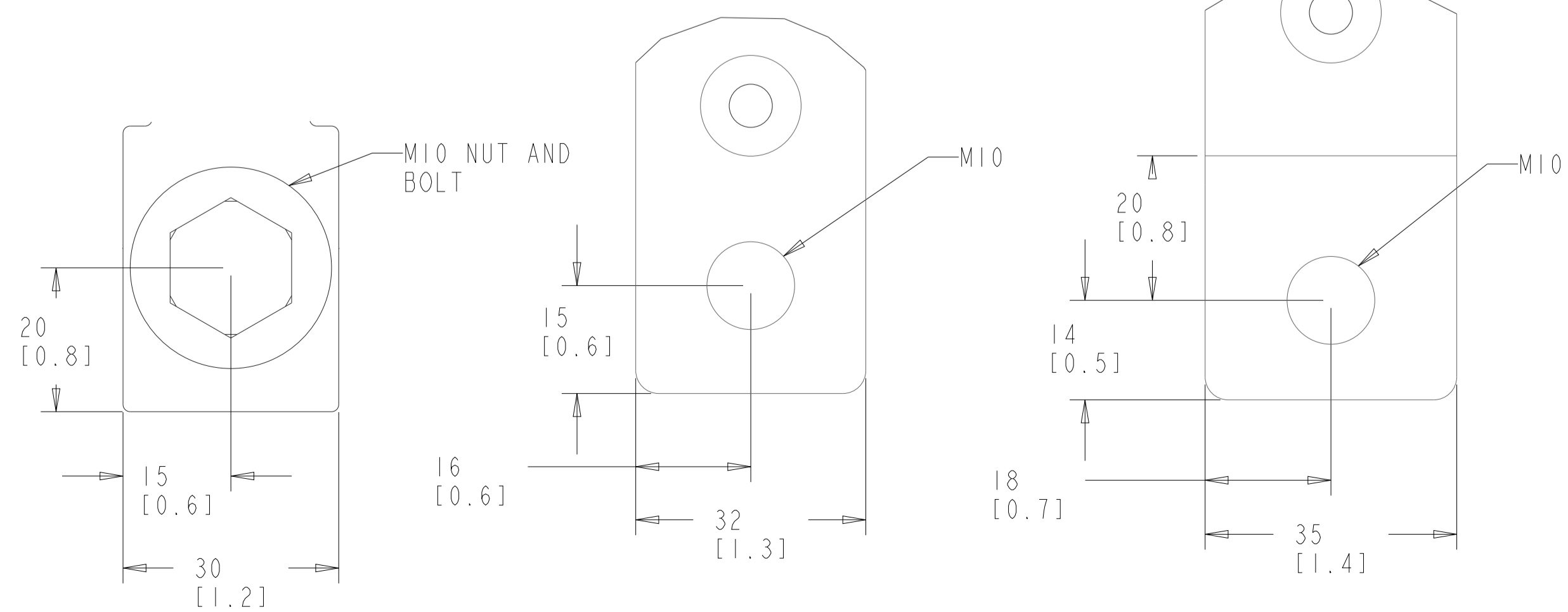
SECTION B-B
MOTOR TERMINALS



MAINS TERMINAL

BRAKE TERMINAL

MOTOR TERMINAL

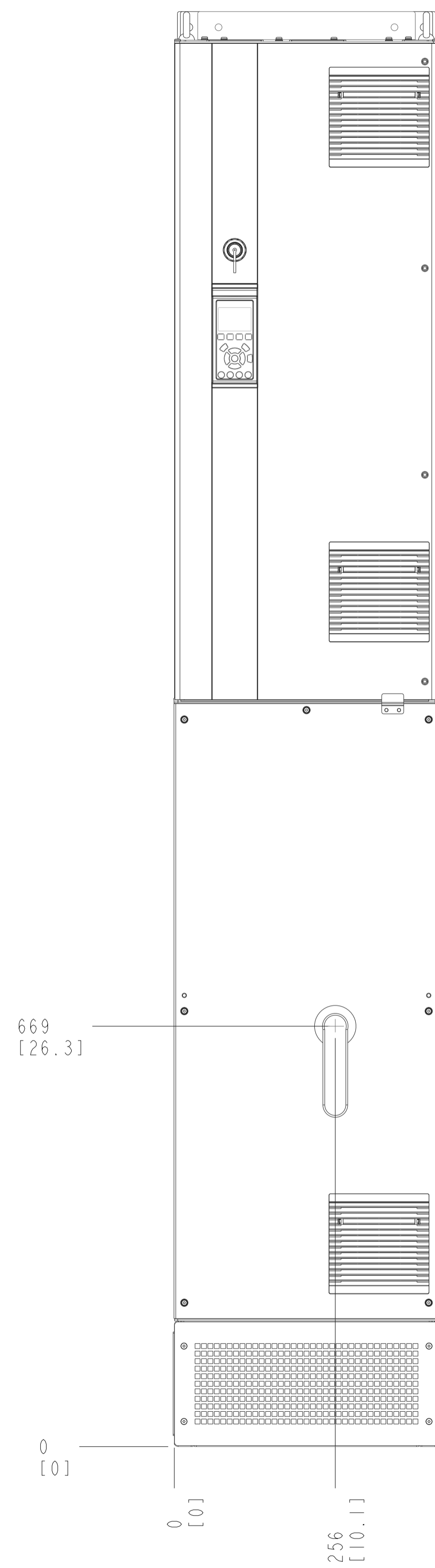


BOTTOM VIEW

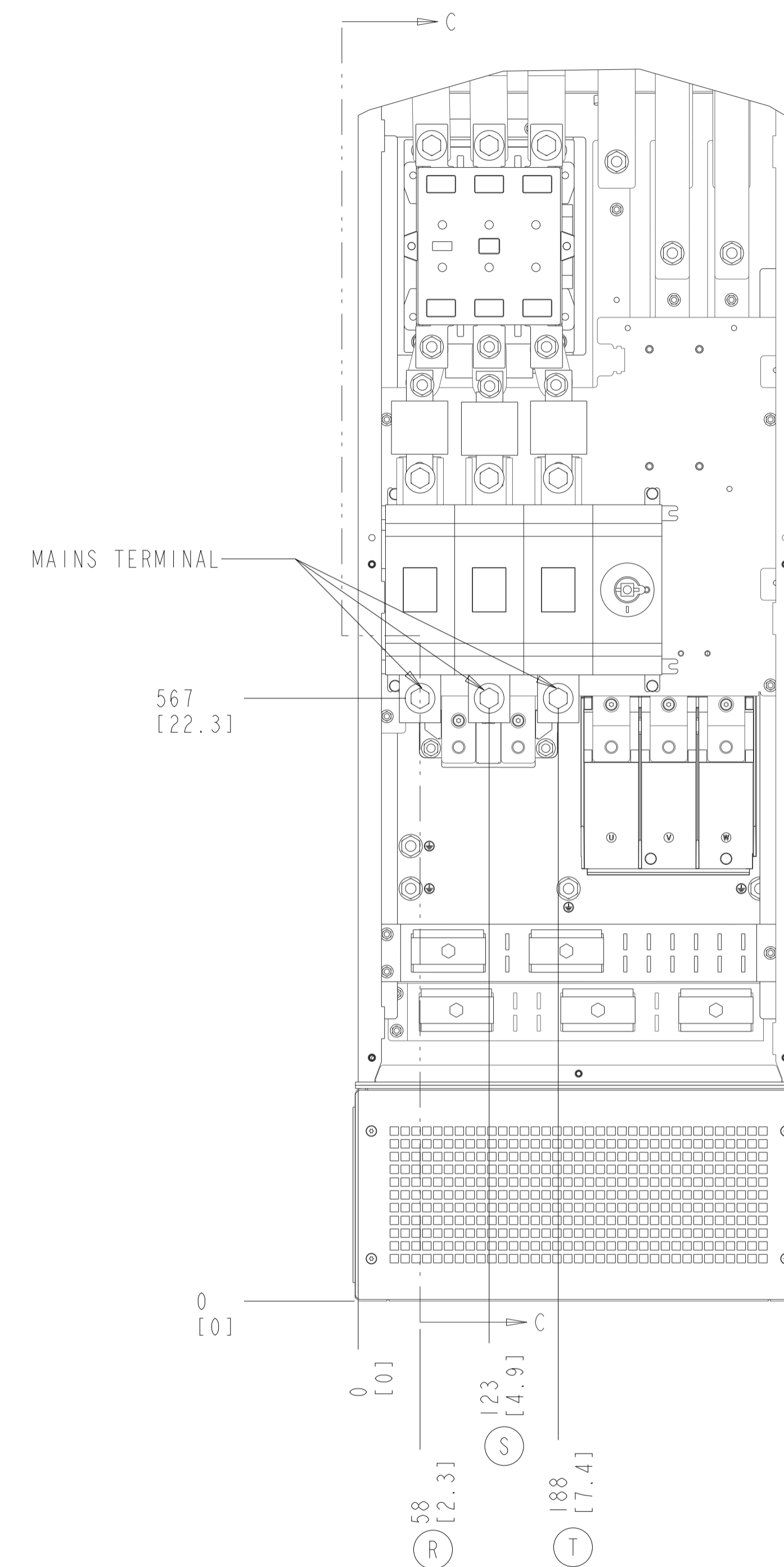
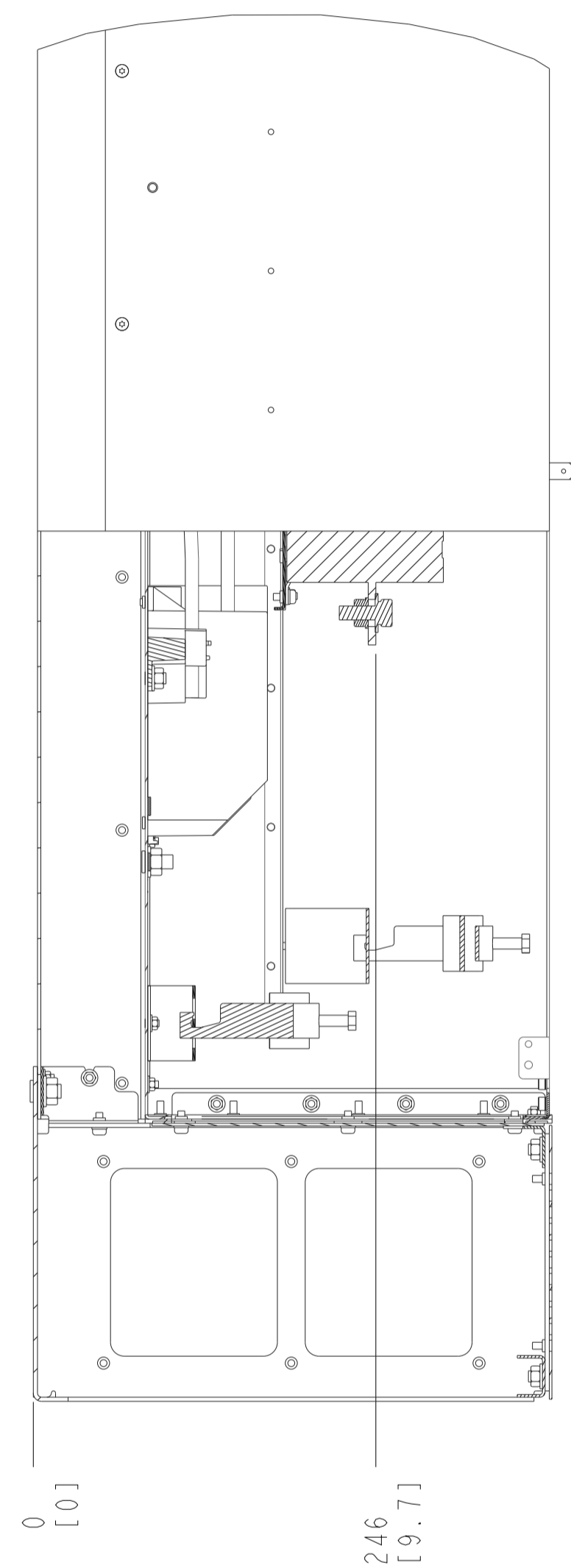
NOTES:

1. PLACE CABLES THROUGH MARKED AREAS
2. 185MM² (400 MCM) MAX WIRE SIZE

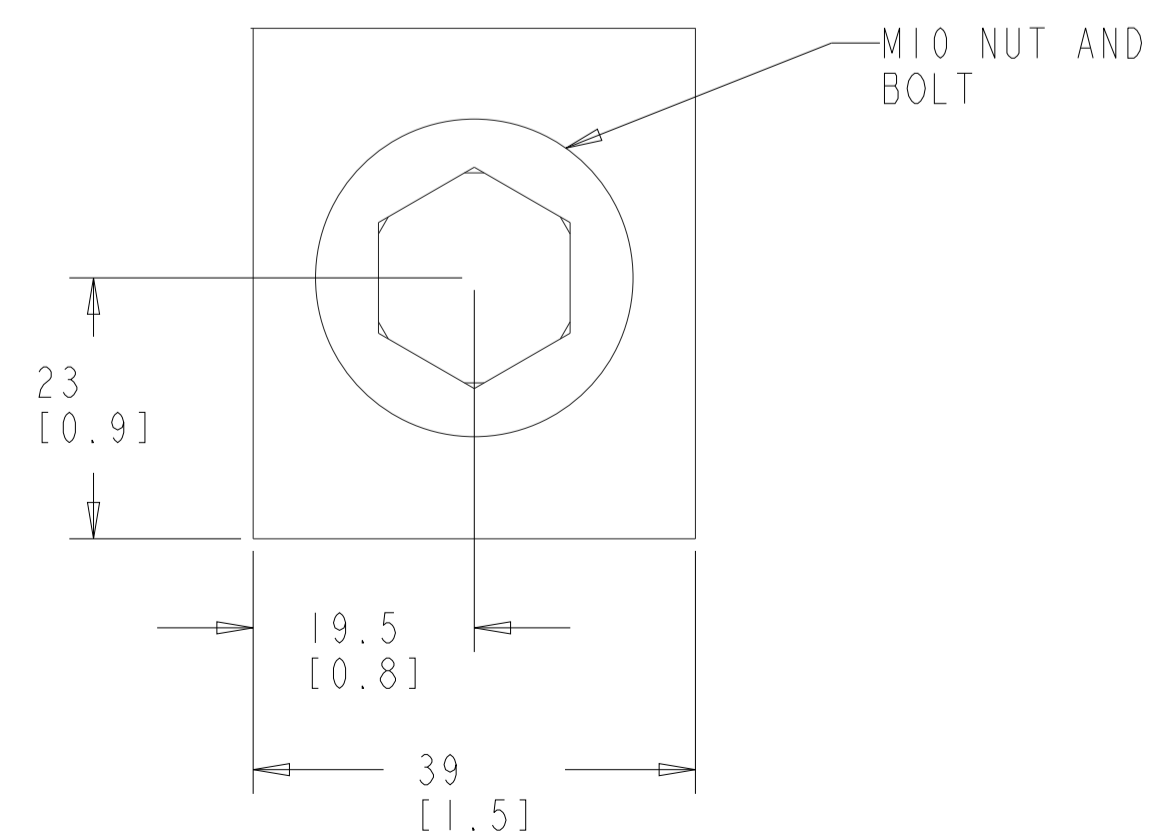
CONTACTOR AND DISCONNECT



SECTION C-C
MAINS TERMINALS



MAINS TERMINAL

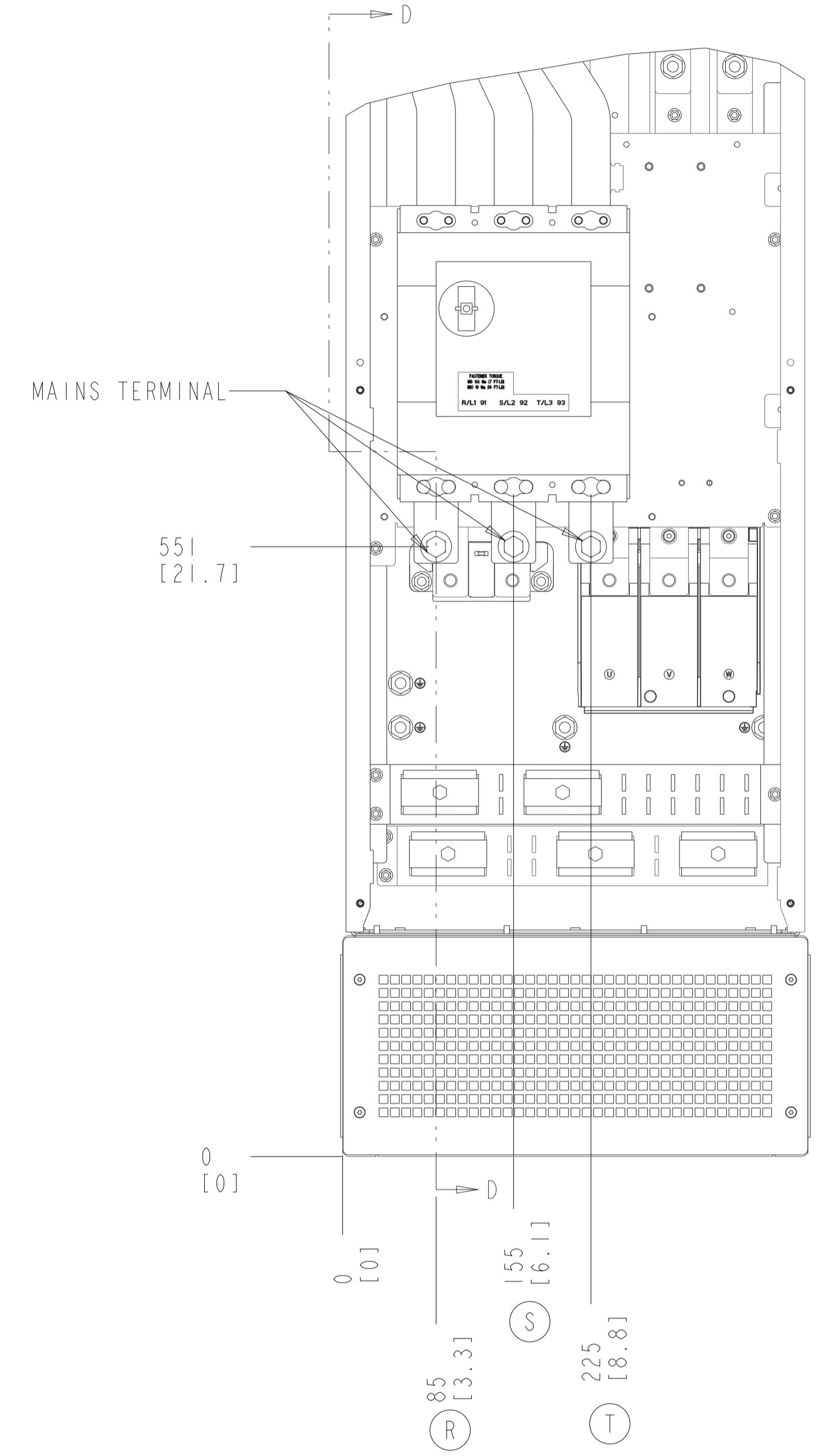
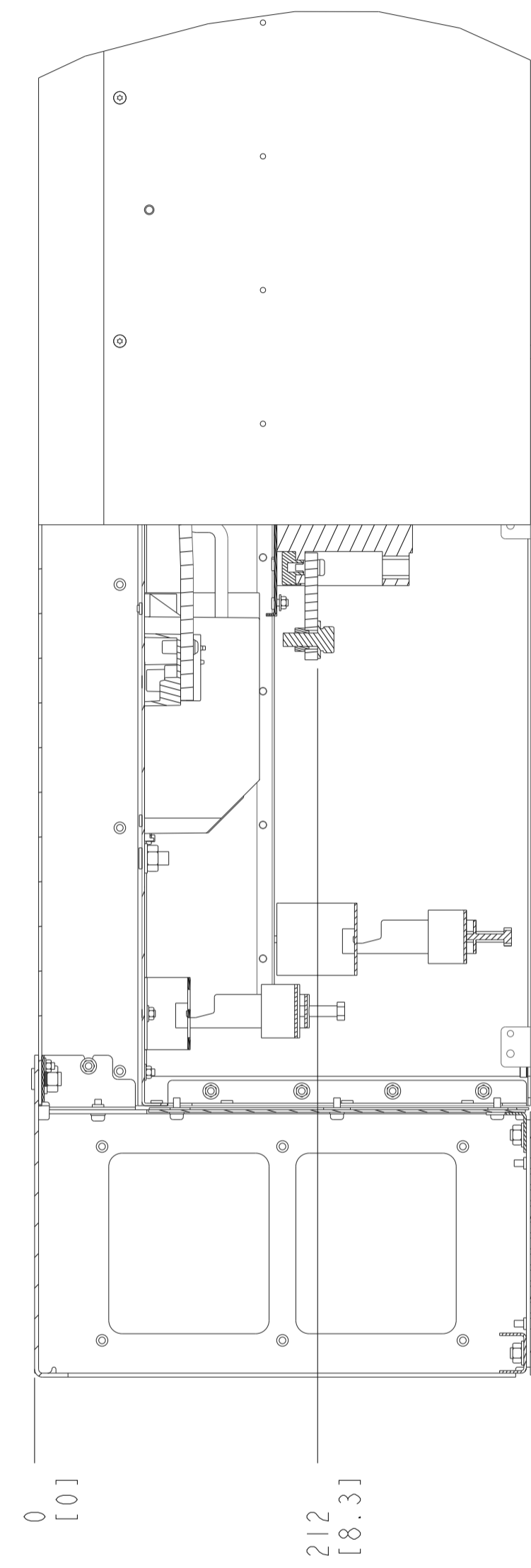
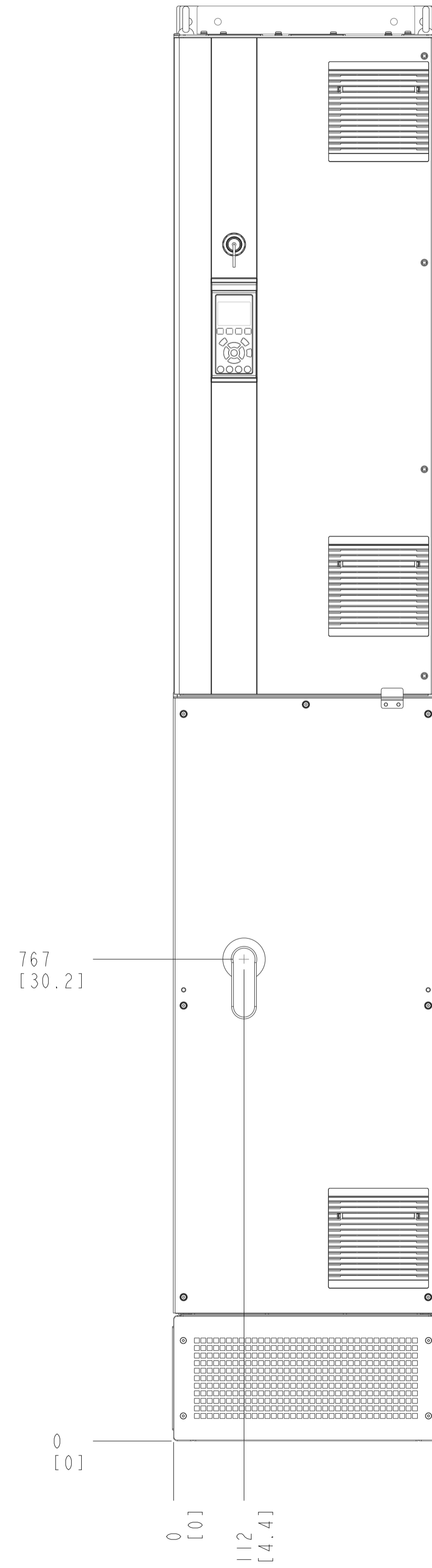


NOTES:

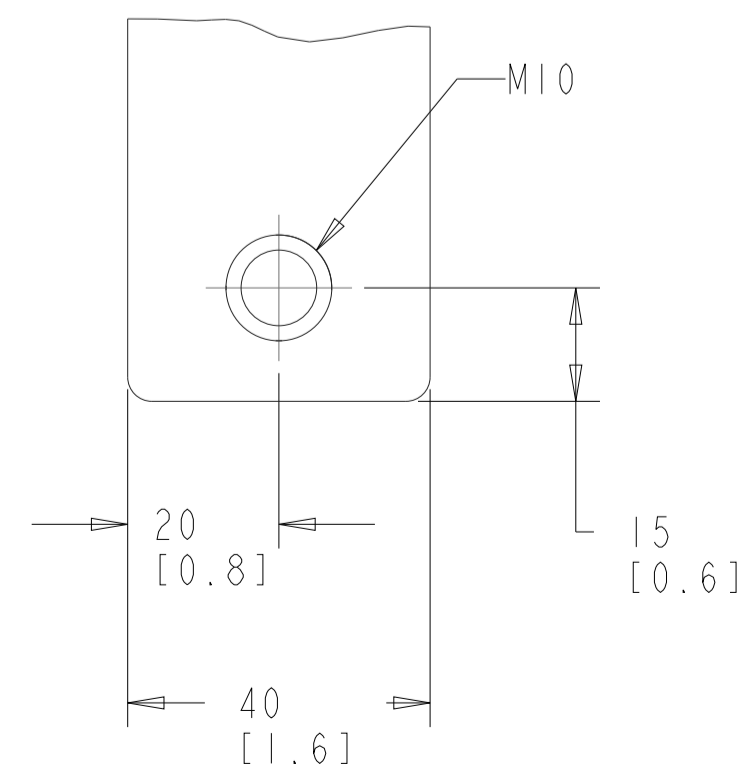
1. REFER SHEET 2 FOR BRAKE AND MOTOR TERMINAL DETAILS

CIRCUIT BREAKER

SECTION D-D
MAINS TERMINALS



MAINS TERMINAL
SCALE 1.000

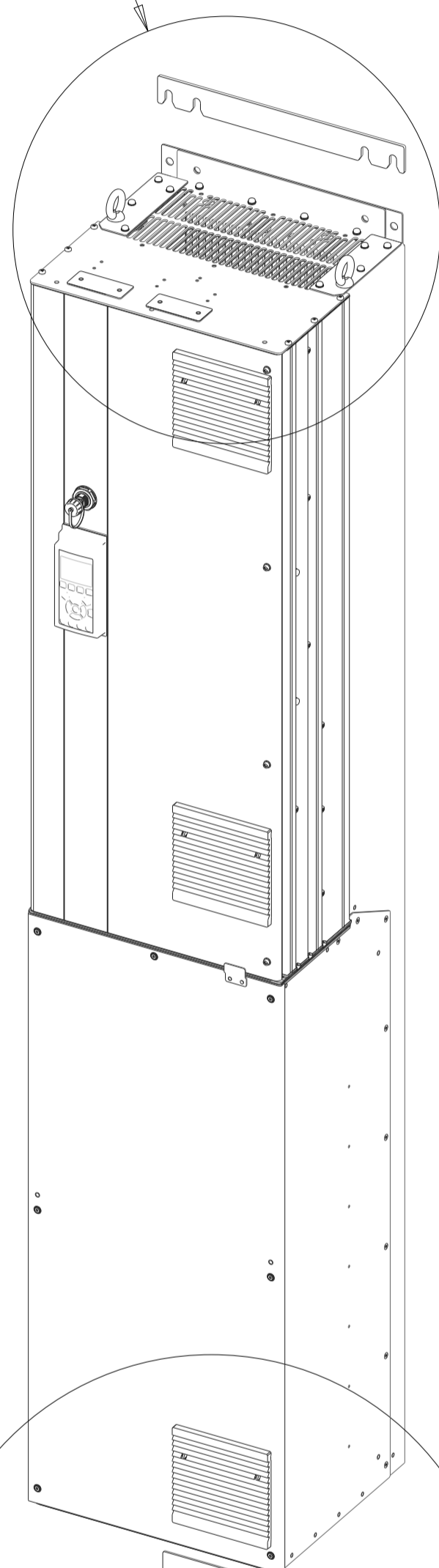


NOTES:

- REFER SHEET 2 FOR BRAKE AND MOTOR TERMINAL DETAILS

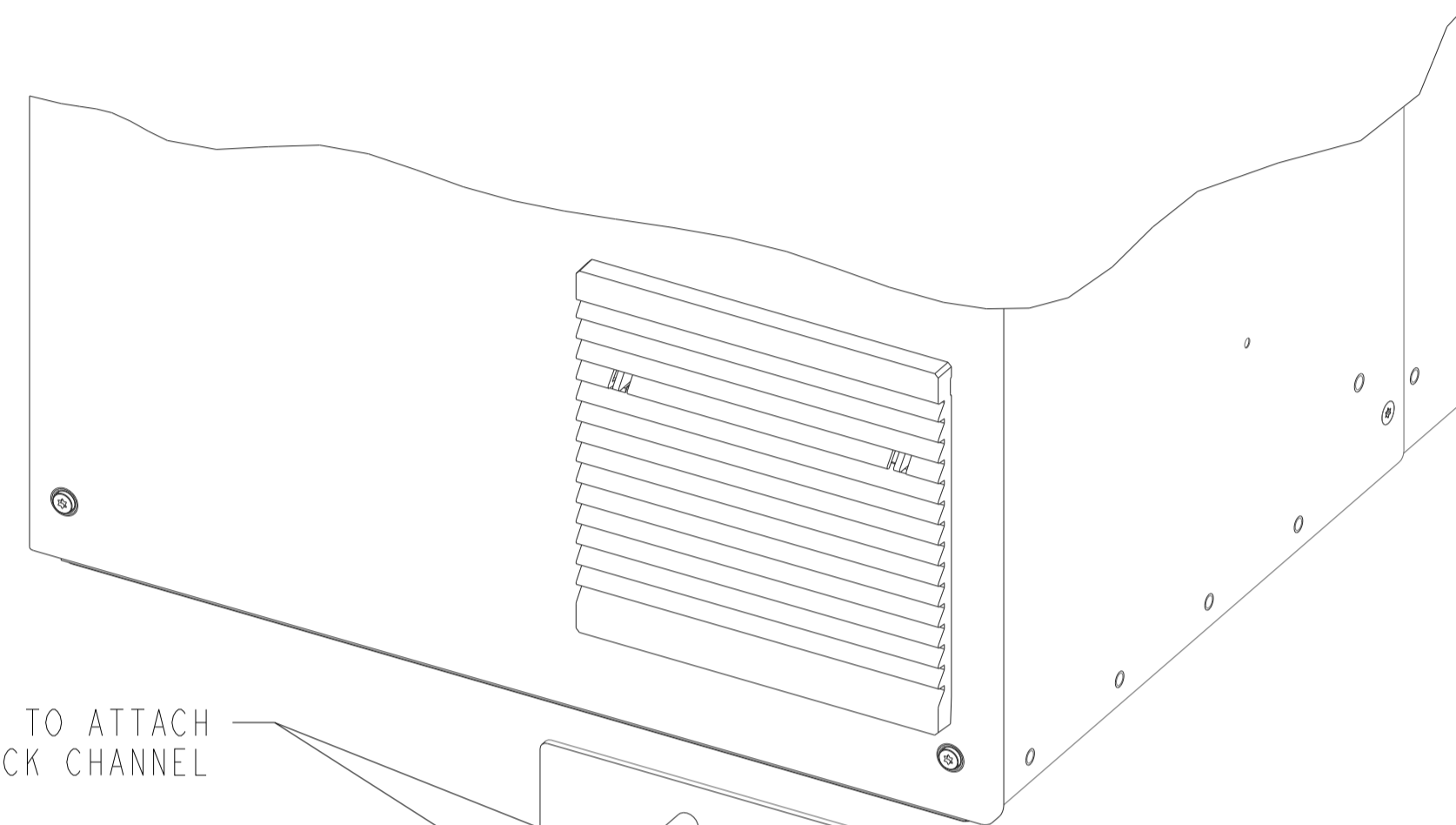
PEDESTAL INSTALLATION

SEE DETAIL C

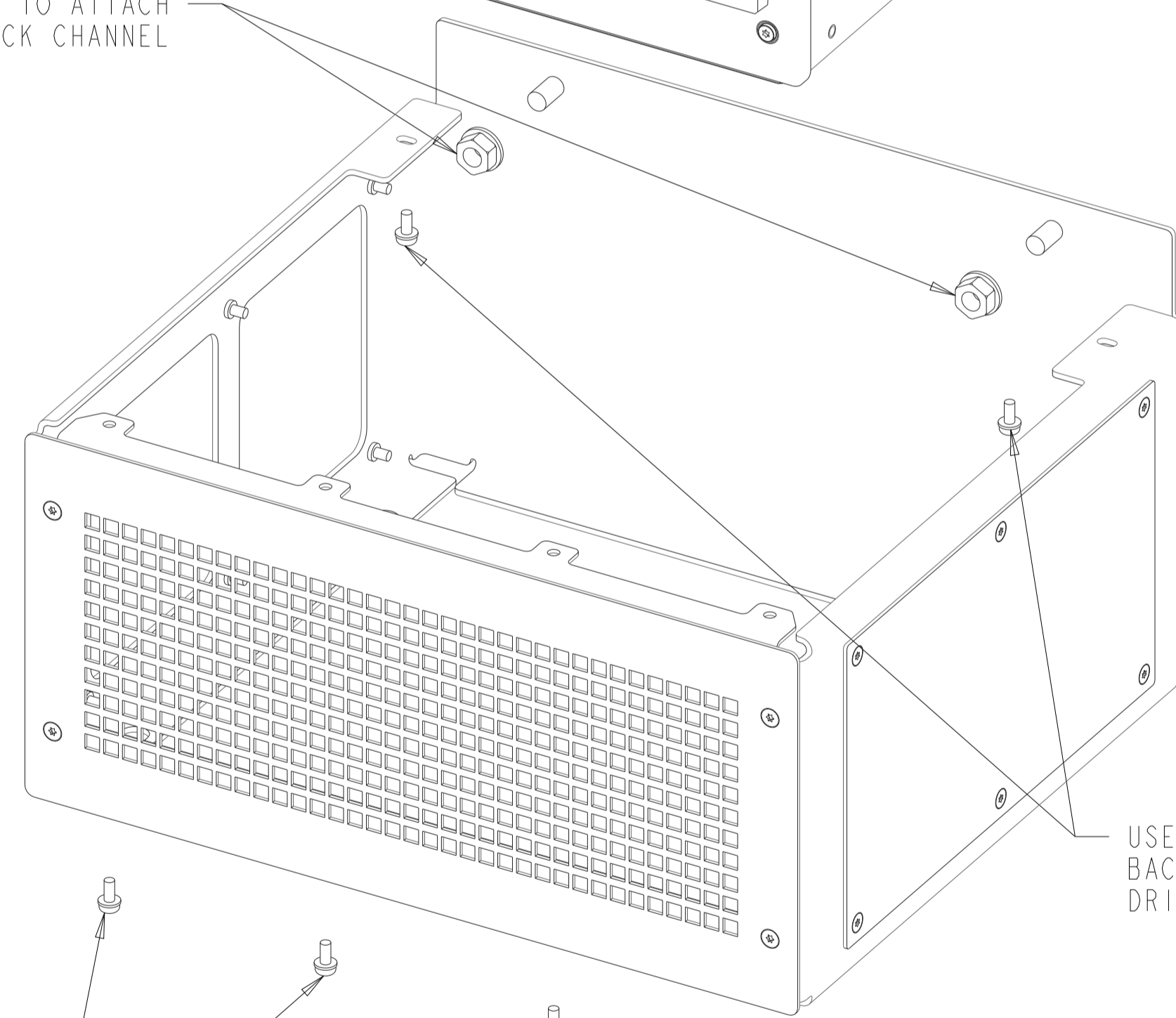


SEE DETAIL B

USE (2) 26516 M10 NUTS TO ATTACH
PEDESTAL TO BRIVE BACK CHANNEL

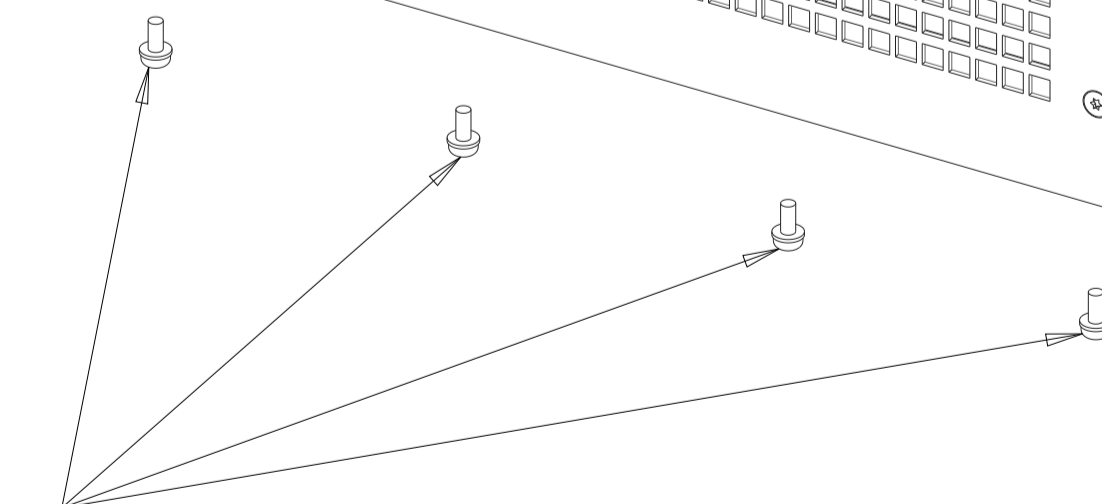


USE (2) 681X9143 M5 SCREWS THROUGH
BACK PEDESTAL FLANGE INTO PEDESTAL
DRIVE MOUNTING BRACKET

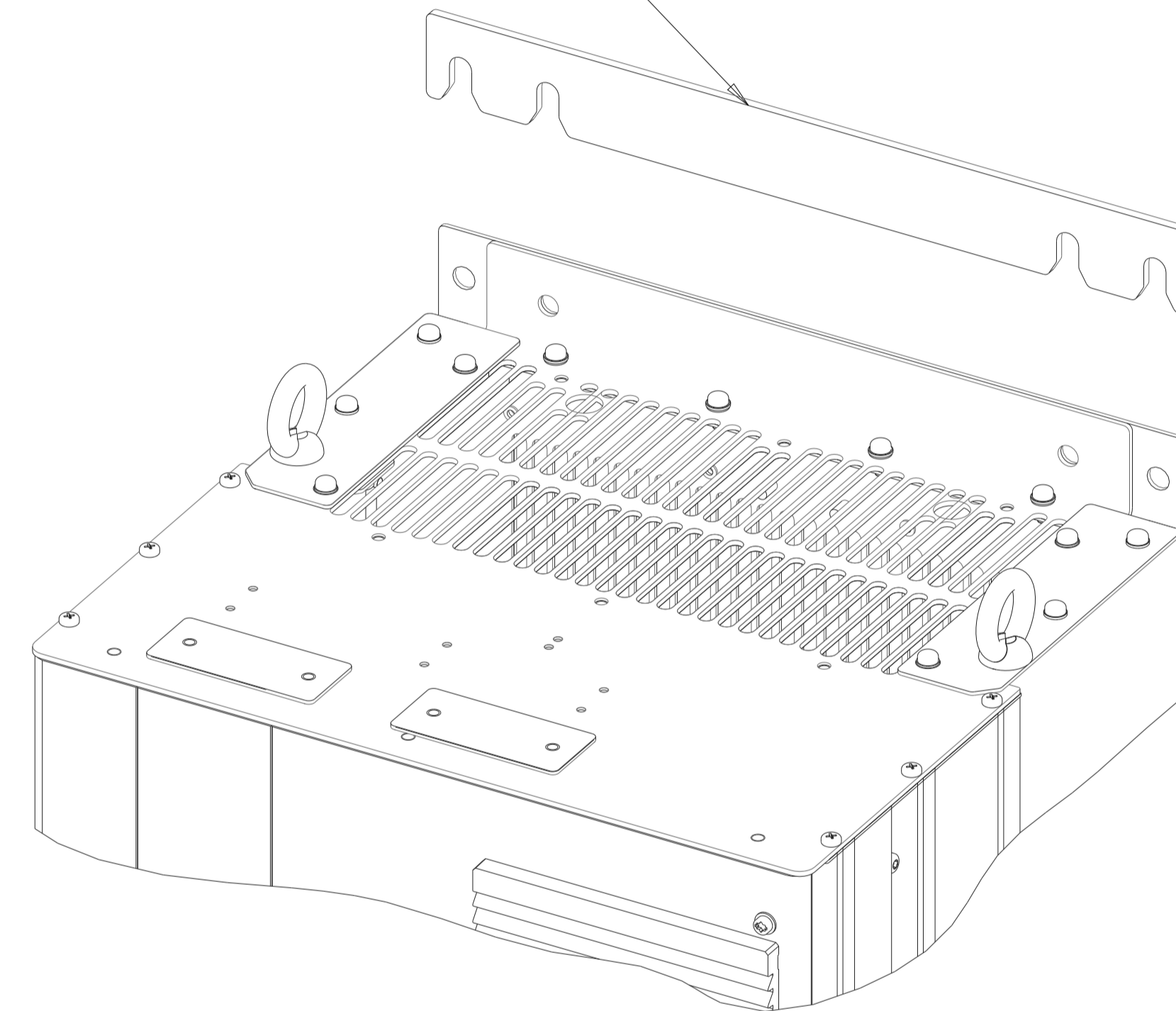


USE (4) 681X9143 M5 SCREWS THROUGH
FRONT PEDESTAL FLANGE INTO FRONT
GLAND PLATE MOUNTING HOLES

DETAIL B
SCALE 0.400



SLIDE PEDESTAL WALL SPACER BEHIND
TOP DRIVE MOUNTING FLANGE BEFORE
ATTACHING ENCLOSURE TO WALL



DETAIL C
SCALE 0.400

NOTES:

- 1) GLAND PLATE MUST BE INSTALLED BEFORE PEDESTAL
- 2) SEE PAGE 1 FOR FLOOR MOUNTING DIMENSIONS

THE TABLES BELOW ARE USED TO DETERMINE THE FRAME SIZE FOR A GIVEN POWER AND VOLTAGE RATING, WITH A CIRCUIT BREAKER, CONTACTOR OR DISCONNECT + CONTACTOR.

- 1) IDENTIFY THE POWER IN NORMAL OVERLOAD (N.O.) OR HIGH OVERLOAD (H.O.), KILOWATTS (KW) OR HORSEPOWER (HP).
 - 2) READ DOWN THE COLUMN TO THE ROW WITH THE CORRECT VOLTAGE TO IDENTIFY THE FRAME SIZE.
- THIS DRAWING IS FOR D8H FRAMES,

THE TABLE BELOW CAN BE USED TO DETERMINE THE FRAME SIZE IF THE SPECIFIC MODEL/TYPE CODE WITH A CIRCUIT BREAKER, CONTACTOR OR DISCONNECT + CONTACTOR IS KNOWN.

KW RATED DRIVES						
KW HIGH OVERLOAD	132	160	200	250	315	315
KW NORMAL OVERLOAD	160	200	250	315	355	400
400V		D8H	D8H	D8H		
500V			D8H	D8H	D8H	
525V	D8H	D8H	D8H	D8H		
690V		D8H	D8H	D8H		D8H

HORSEPOWER RATED DRIVES					
HP HIGH OVERLOAD	200	250	300	350	350
HP NORMAL OVERLOAD	250	300	350	400	450
460V		D8H	D8H		D8H
575V	D8H	D8H	D8H	D8H	

PLATFORM	VOLTAGE	MODEL/TYPECODE	FRAME(IP21/IP54)
HVAC	T4	FC-102N200T4	D8H
		FC-102N250T4	
		FC-102N315T4	
	T7	FC-102N200T7	
		FC-102N250T7	
		FC-102N315T7	
AQUA	T4	FC-102N400T7	
		FC-202N200T4	
		FC-202N250T4	
	T7	FC-202N315T4	
		FC-202N200T7	
		FC-202N250T7	
		FC-202N315T7	
		FC-202N400T7	
		FC-202N400T7	
AUTOMATION	T5	FC-302N160T5	
		FC-302N200T5	
		FC-302N250T5	
	T7	FC-302N160T7	
		FC-302N200T7	
		FC-302N250T7	
		FC-302N250T7	
		FC-302N315T7	
		FC-302N315T7	