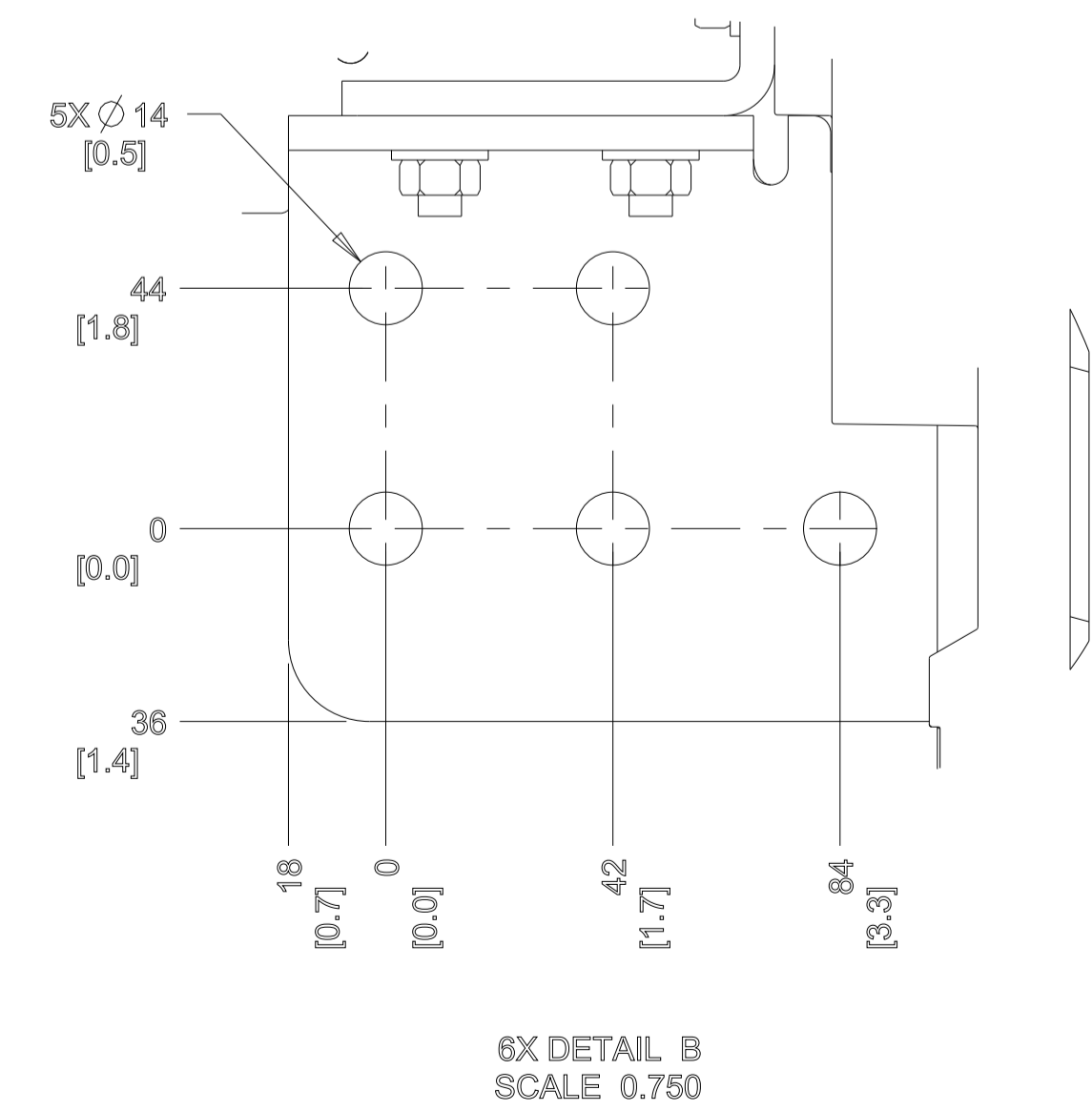
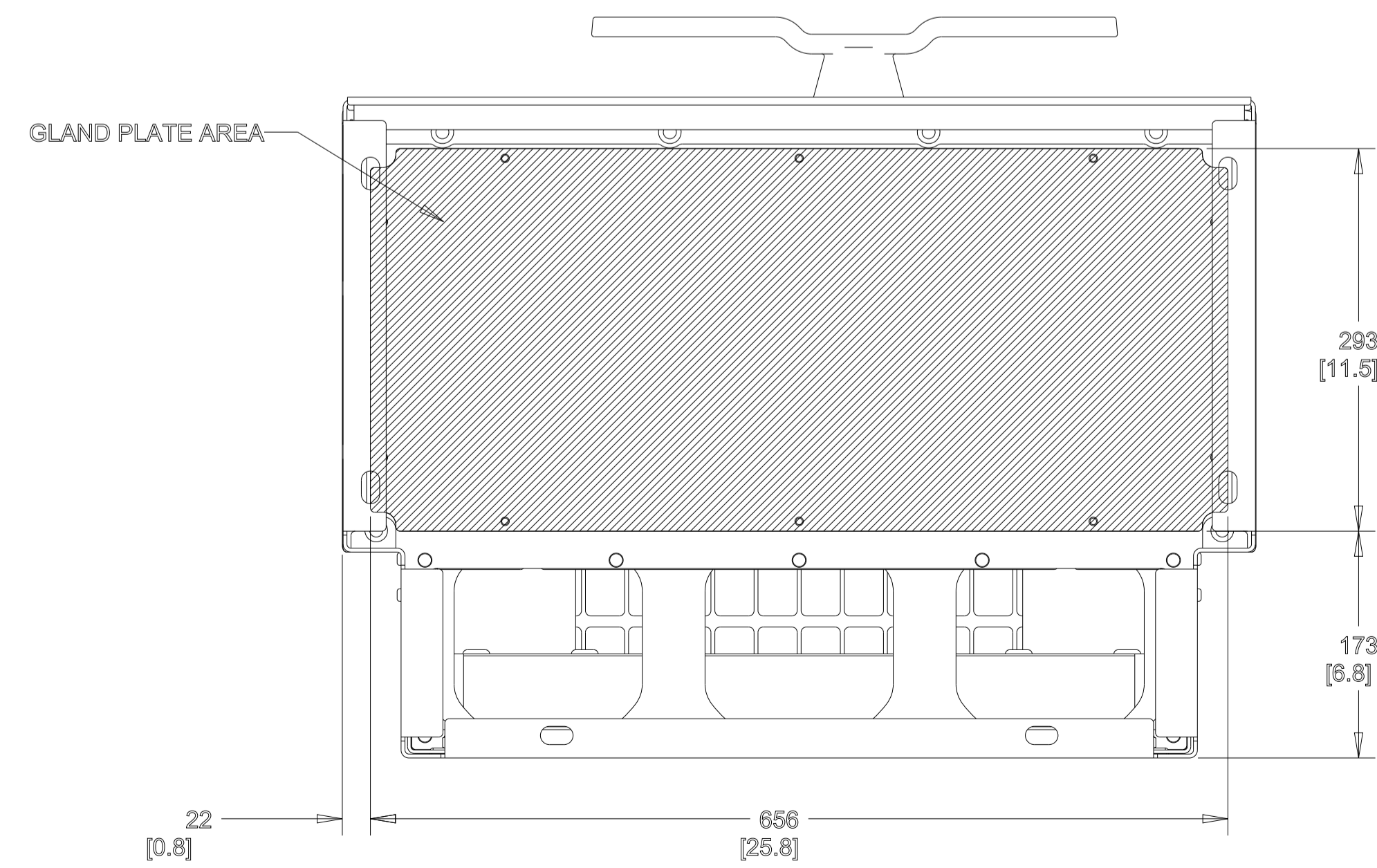
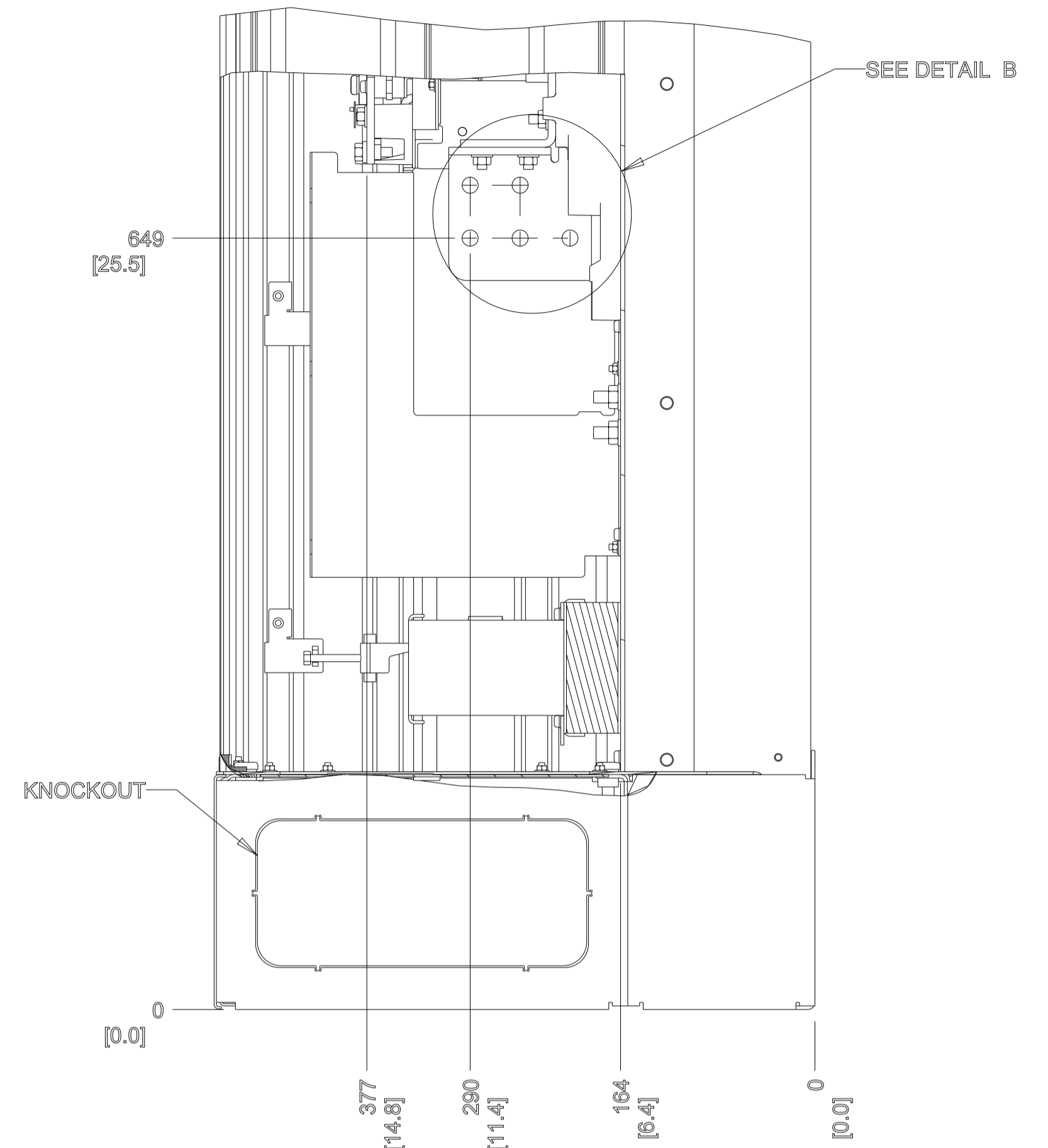
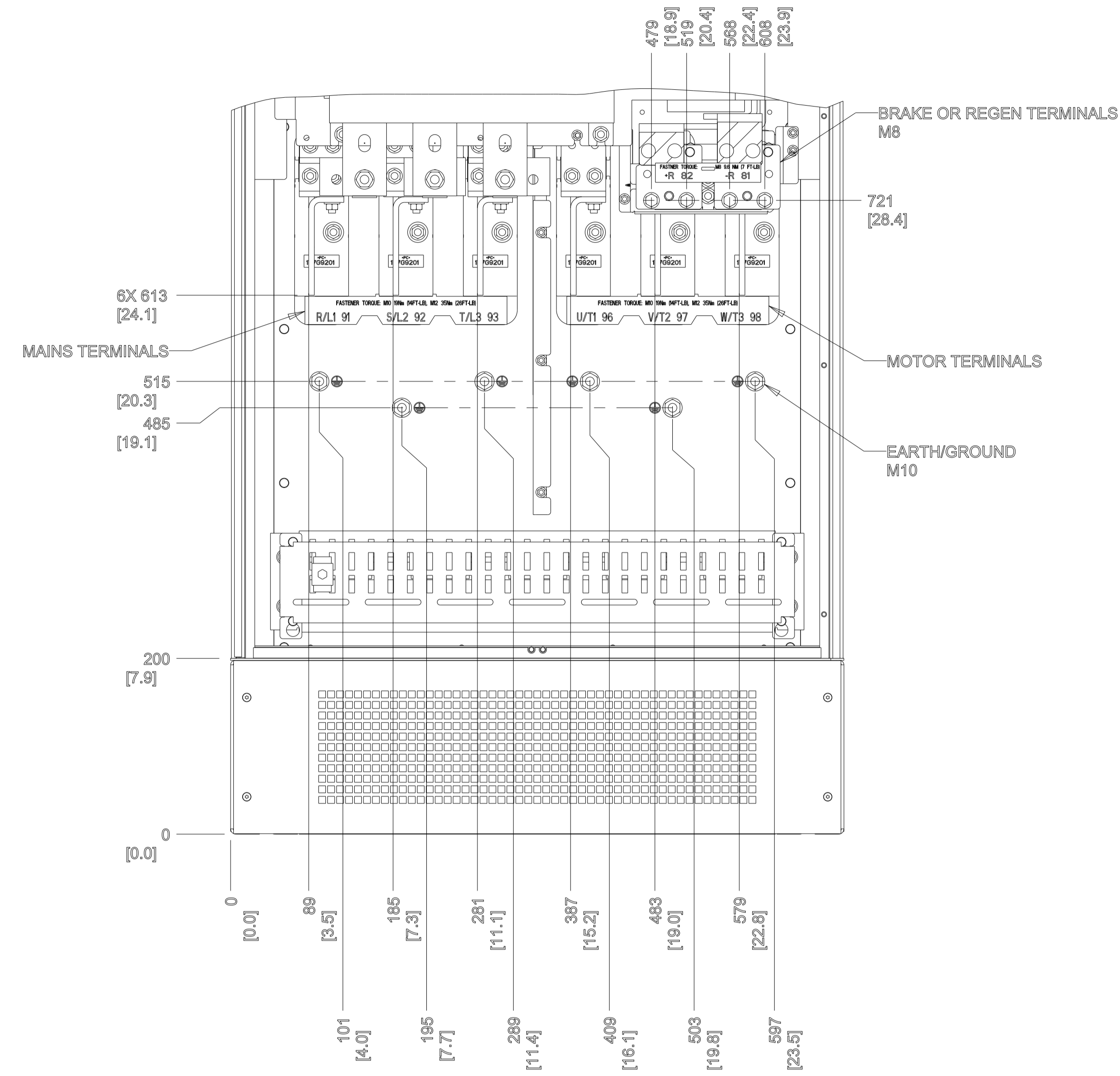
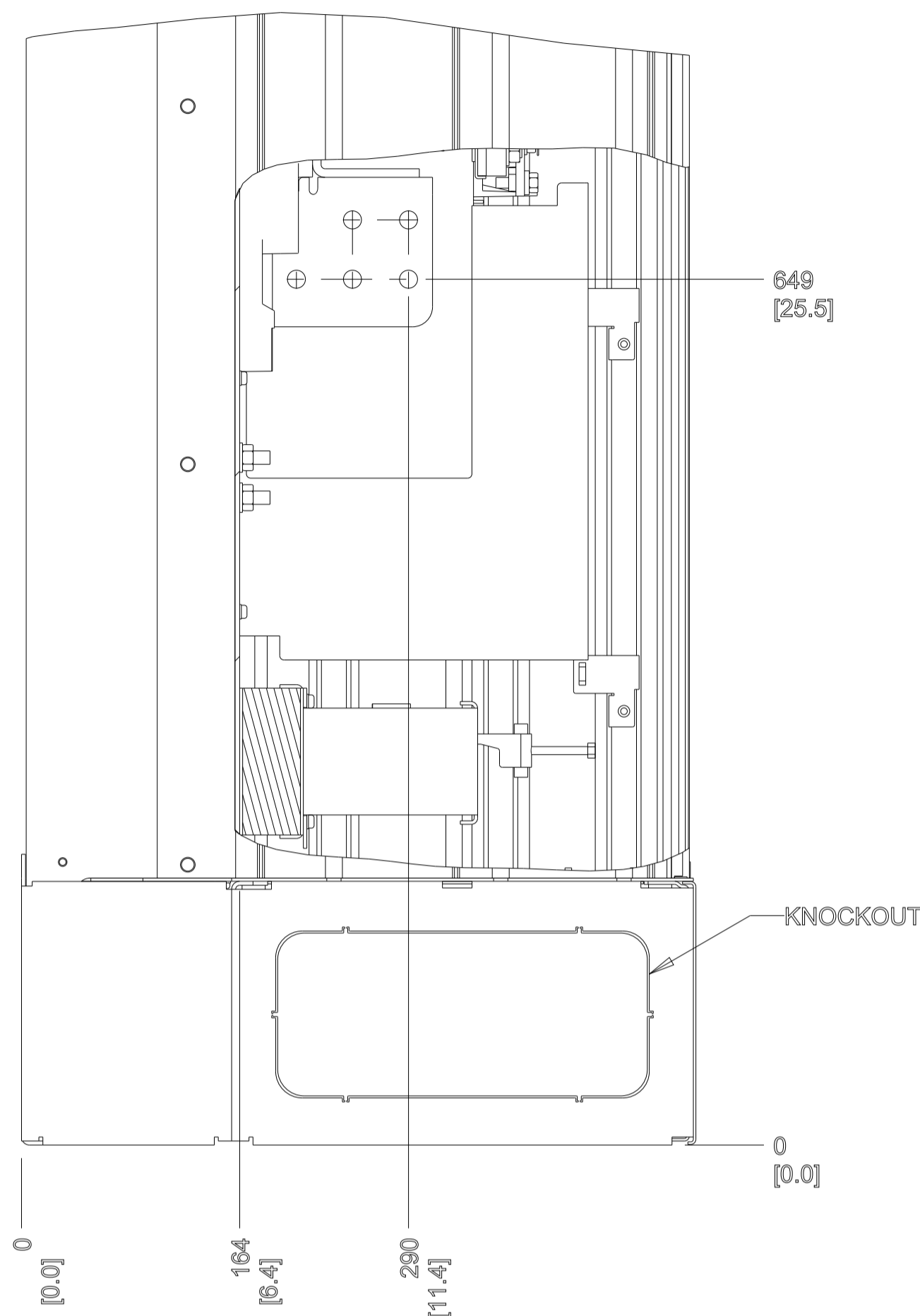


NOTES:
 1. FOR FASTENER TORQUES, REFER TO 175r0676 CLASS A UNLESS OTHERWISE SPECIFIED.
 ○ CRITICAL CHARACTERISTICS
 ▽ KEY CHARACTERISTICS
 ○ INSPECTION
 MUST COMPLY TO ROHS DIRECTIVE 2011/65/EU

UNLESS OTHERWISE SPECIFIED INTERPRET DIM. & TOL. PER ASME Y14.5M-1994 ALL DIMENSIONS ARE IN MILLIMETERS XX: 1.0 XXX: 0.50 << ± 1.0		THIRD ANGLE PROJECTION	SCALE	SIZE	MATERIAL
FORM CONTROLLED DRAWING NOT VALID WITHOUT FROZEN DATE IN ID STAMP			0.125	A1	
CHANGED					FINISH
DESIGNED	Danfoss				DESCRIPTION
CHECKED	01/25/2017				MCAD, FC, E2H, IP21/IP54, Options
CONFIDENTIAL: PROPERTY OF DANFOSS A/S NØRDBORG, DENMARK. NOT TO BE HANDED OVER TO BE COPIED OR BE USED BY A THIRD PARTY. TWO OR THREE DIMENSIONAL REPRODUCTION OF CONTENTS TO BE AUTHORIZED BY DANFOSS A/S.					DRAWING NUMBER: 177R0673 REV: 0.1 SHEET: 1 OF 2 MODEL: P4001_EZE4



DRAWING NUMBER	177R0673	REV	0.1
MODEL	P4001 EZE4	SHEET	2 OF 2