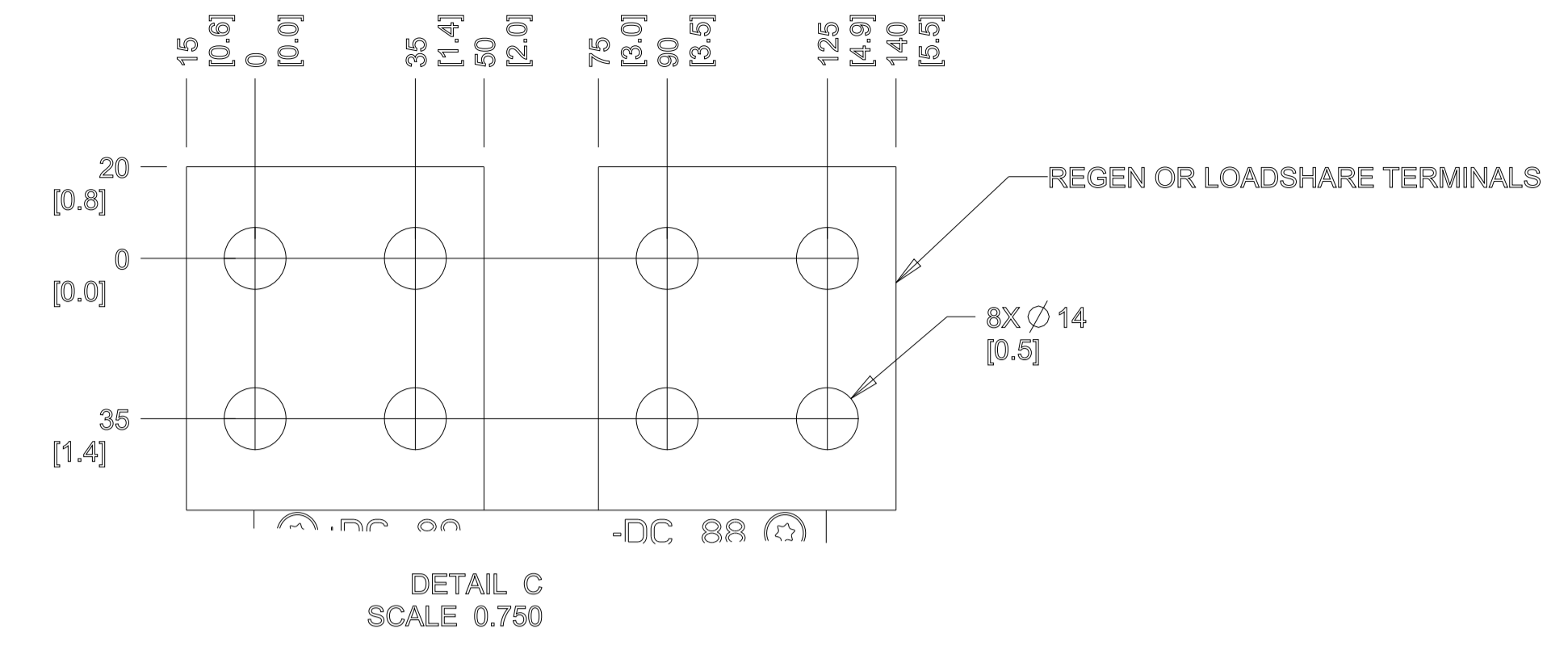
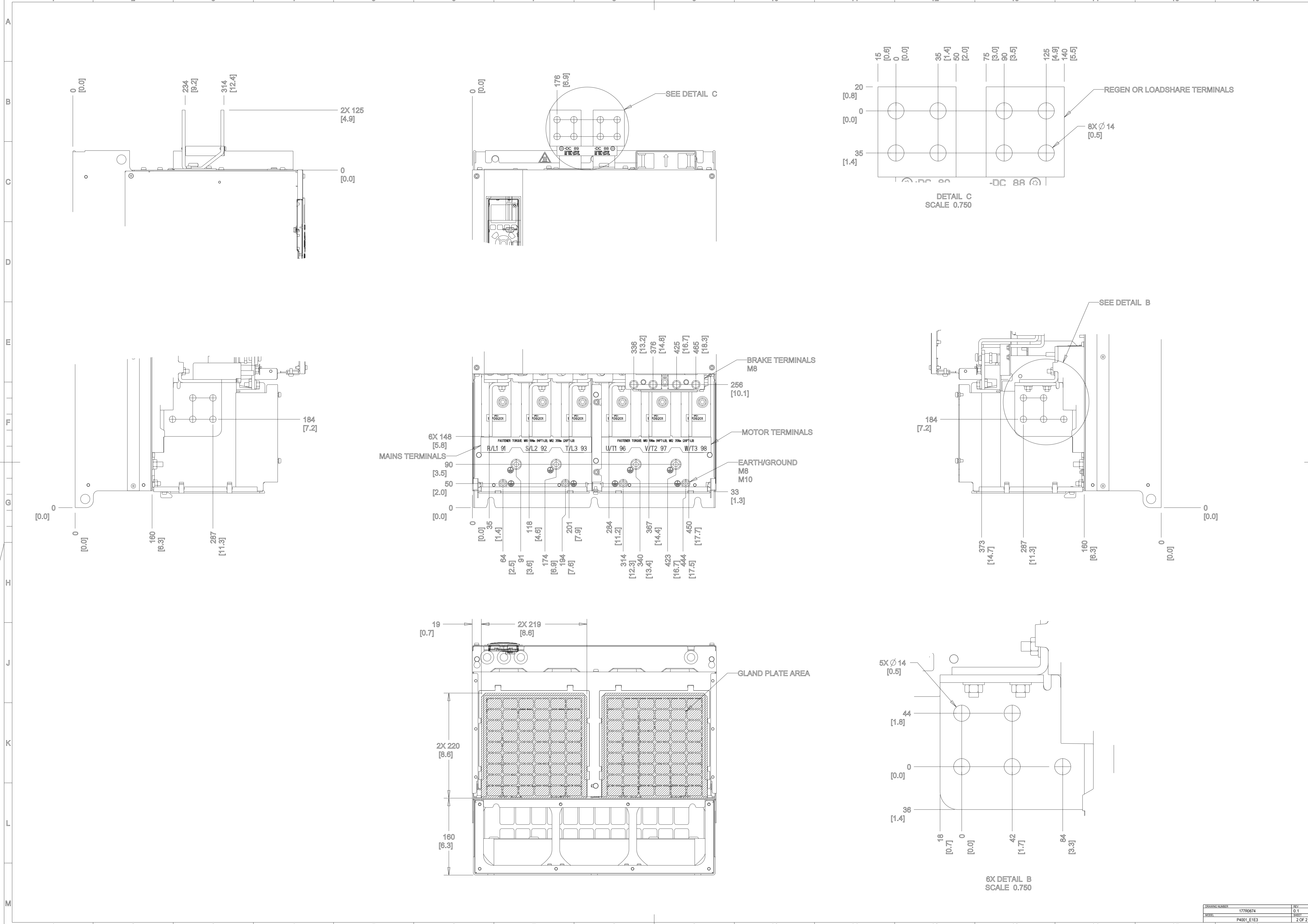
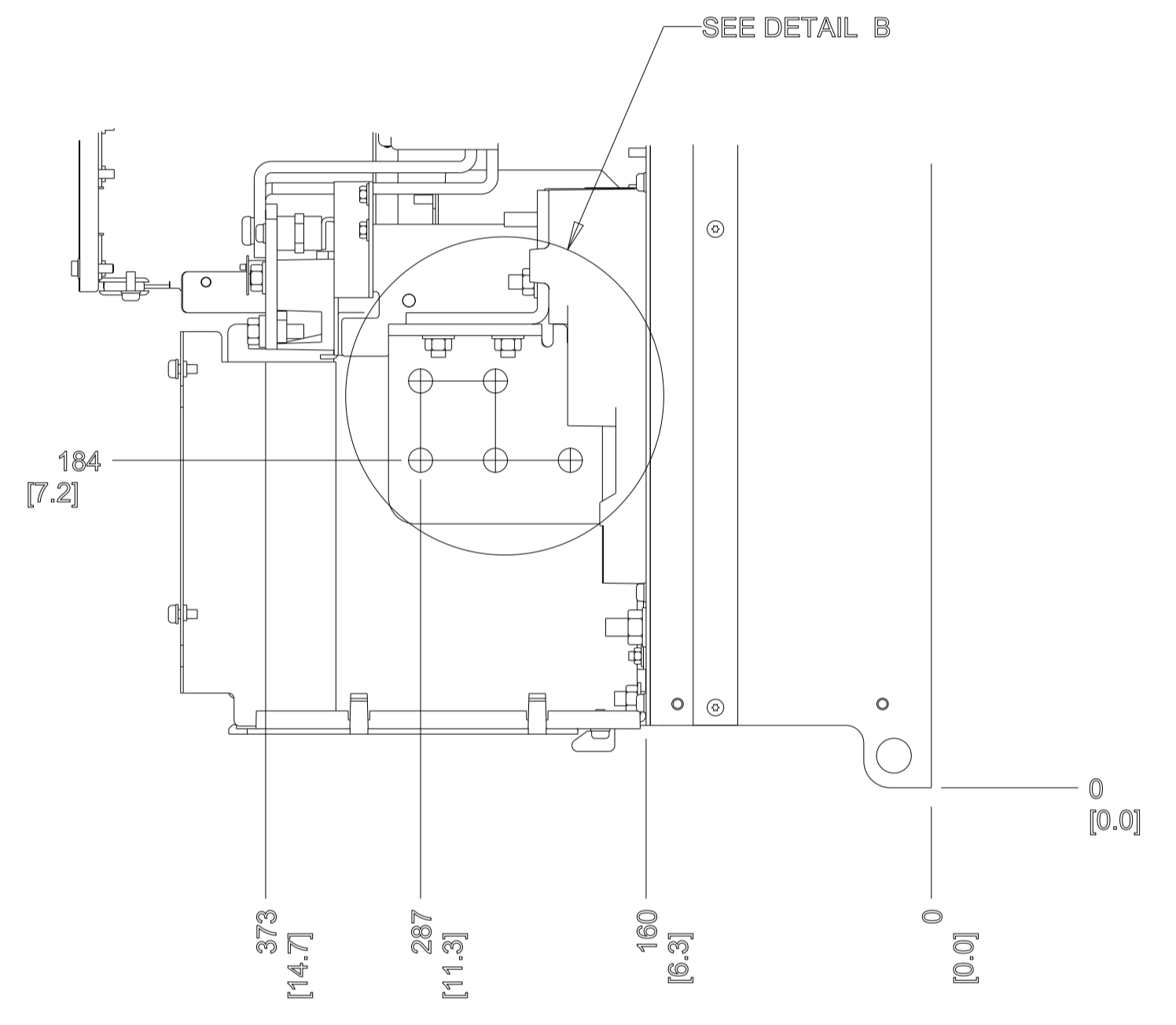


NOTES:  
 1. FOR FASTENER TORQUES, REFER TO 175R5600 CLASS A UNLESS OTHERWISE SPECIFIED.  
 ▽ CRITICAL CHARACTERISTICS  
 ▽ KEY CHARACTERISTICS  
 ○ INSPECTION  
 MUST COMPLY TO ROHS DIRECTIVE 2011/65/EU

UNLESS OTHERWISE SPECIFIED INTERPRET DIM & TOL PER ASME Y14.5M-1994 ALL DIMENSIONS ARE IN MILLIMETERS XX: 1.0 XXX: 0.50 ± 1.0		THIRD ANGLE PROJECTION	SCALE 0.175	SIZE A1	MATERIAL
FORM CONTROLLED DRAWING NOT VALID WITHOUT FROZEN DATE IN Q STAMP				FINISH	
CHANGED	DESIGNED Danfoss			01/25/2017	DESCRIPTION MCAD, FC, E3h, IP20, Options
CHECKED		DRAWING NUMBER 177R0674		REV 0.1	DATE 1/25/17
CONFIDENTIAL: PROPERTY OF DANFOSS A/S NØRDBØRG, DENMARK. NOT TO BE HANDED OVER TO BE COPIED OR BE USED BY A THIRD PARTY. TWO OR THREE DIMENSIONAL REPRODUCTION OF CONTENTS TO BE AUTHORIZED BY DANFOSS A/S.		MODEL P4001_E1E3		SHEET 1 OF 2	



DETAIL C  
SCALE 0.750



6X DETAIL B  
SCALE 0.750

DRAWING NUMBER	177R0674	REV	0.1
MODEL	P4001 E1E3	SHEET	2 OF 2