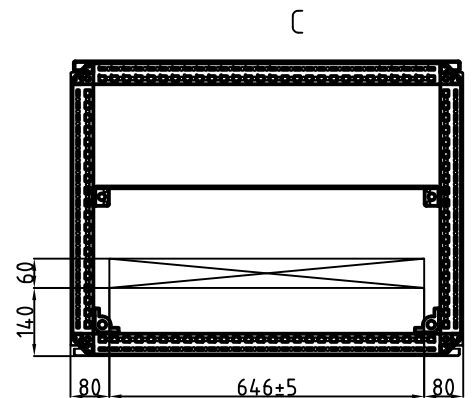
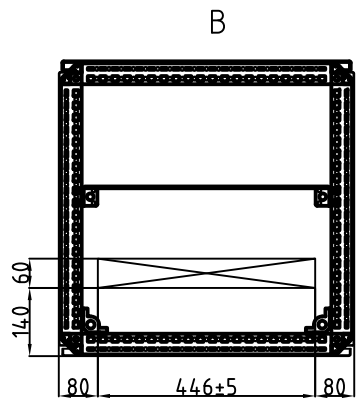
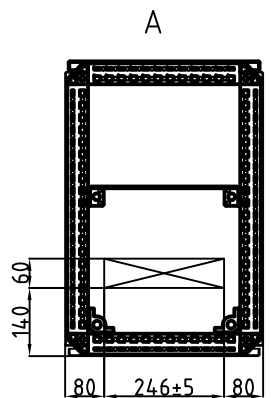
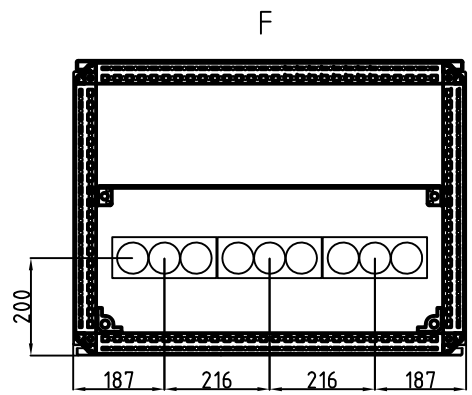
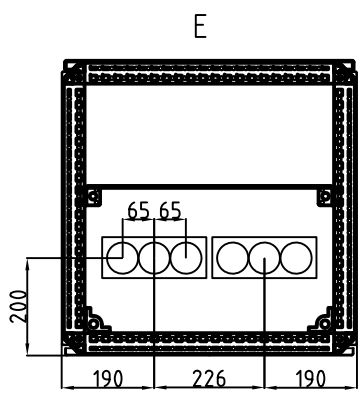
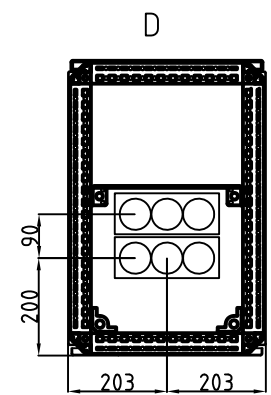


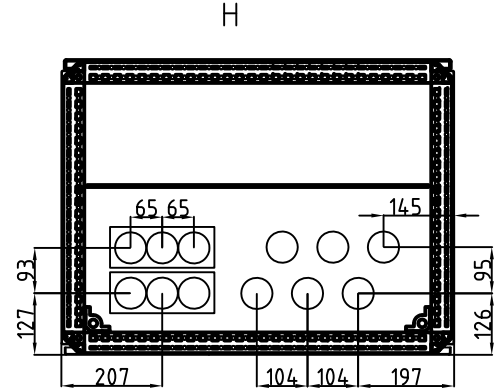
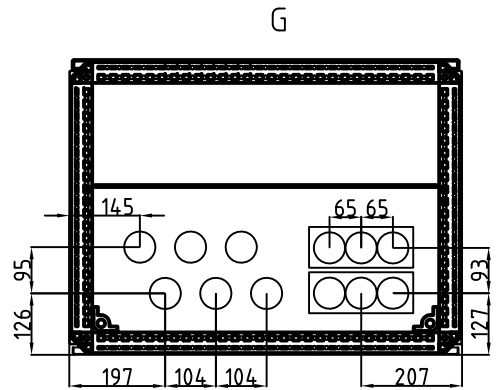
Floor A and D (400 mm wide cabinet) are made for extra cabinets, +ODU etc.



Floors FR9-14, AF9-14		
Frame	IP21	IP54
FR9	B	E
FR10	B	E
FR11	C	F
FR12	B	E
FR13	H	H
FR14	H	H
AF9	B	E
AF10	B	E
AF12	B	E
AF13	H	H
AF14	H	H



FR14, AF14 also use floor G if necessary (look at the connection points)



1 2 3 4 5 6 7 8

A

B

C

D

E

F

A

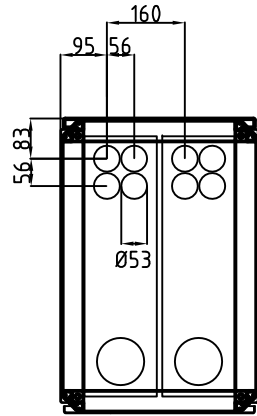
B

C

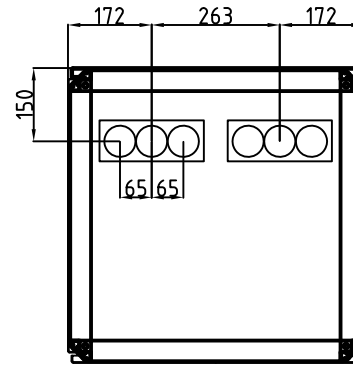
D

E

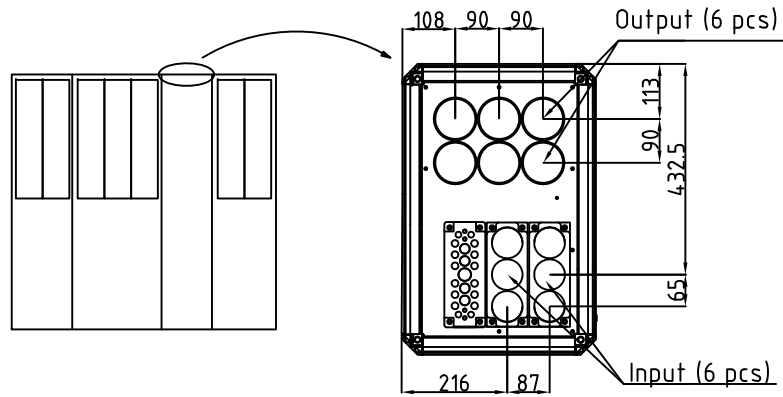
F



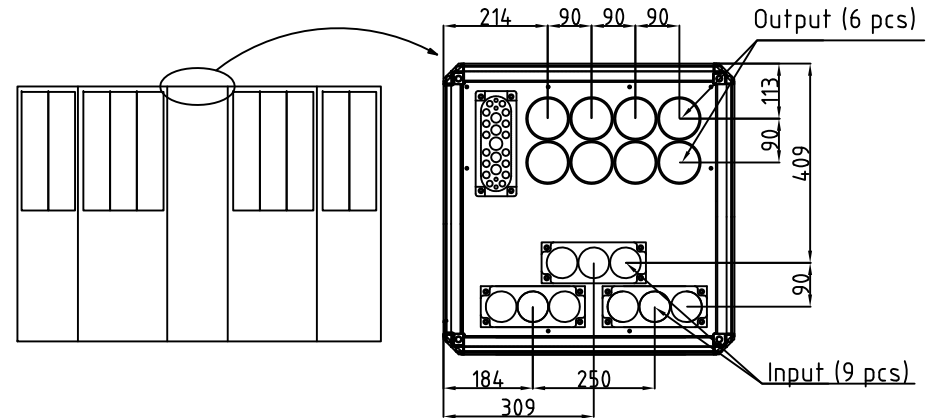
400 mm wide cabinet



600 mm wide cabinet



FR13
Cabling cabinet middle



FR14
Cabling cabinet middle



Title NXC Cablings input/Output Top

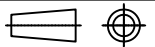
Incoming/outgoing cables

Based on

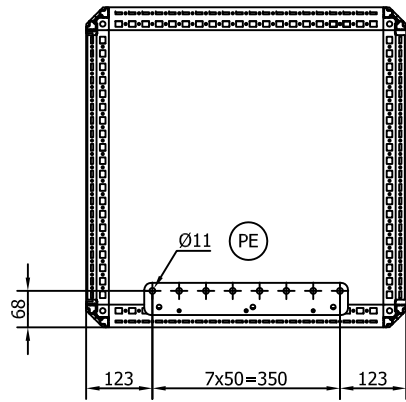
Scale 1:20/A3

Doc. no.
VL25-0009-03A

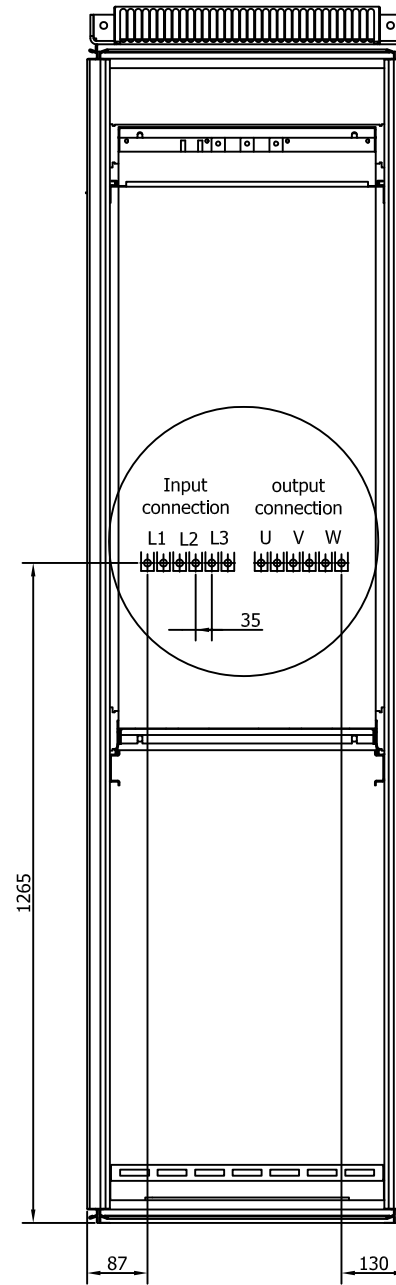
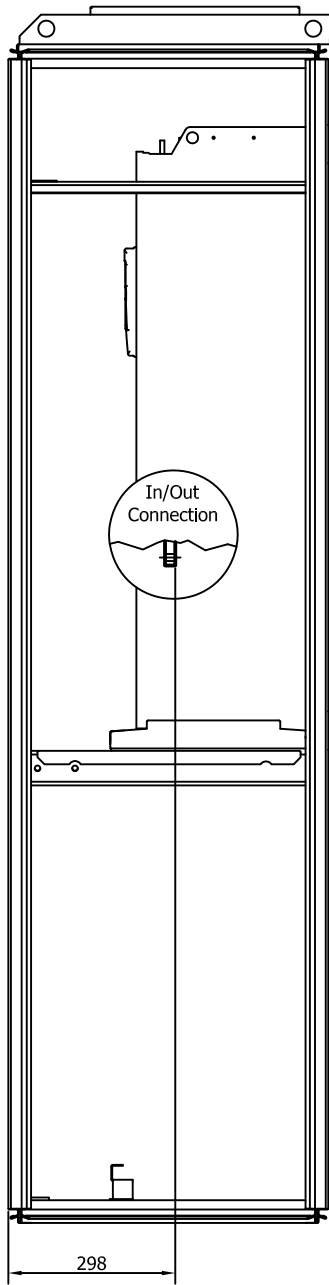
Revision
A



Sheet 1 / 1

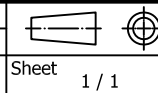


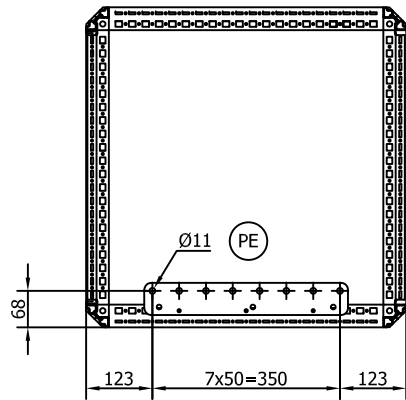
Terminal 95-185 mm²



Title FR 9
 125A/690V - 300A/500V
 No options
 Connection points

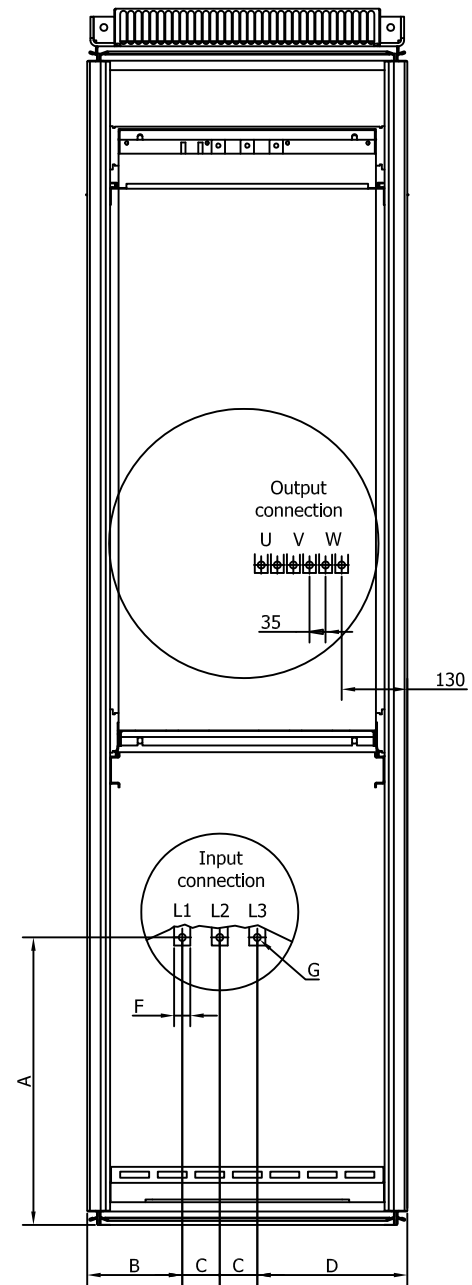
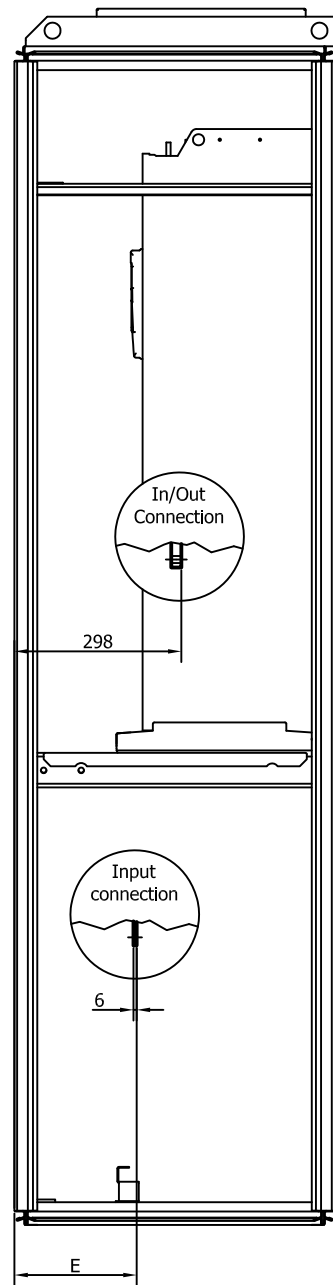
Based on
 Tolerance ISO 2768-m
 Scale 1:10/A3
 Doc. no.
 VL25-0099-01
 Revision
 A



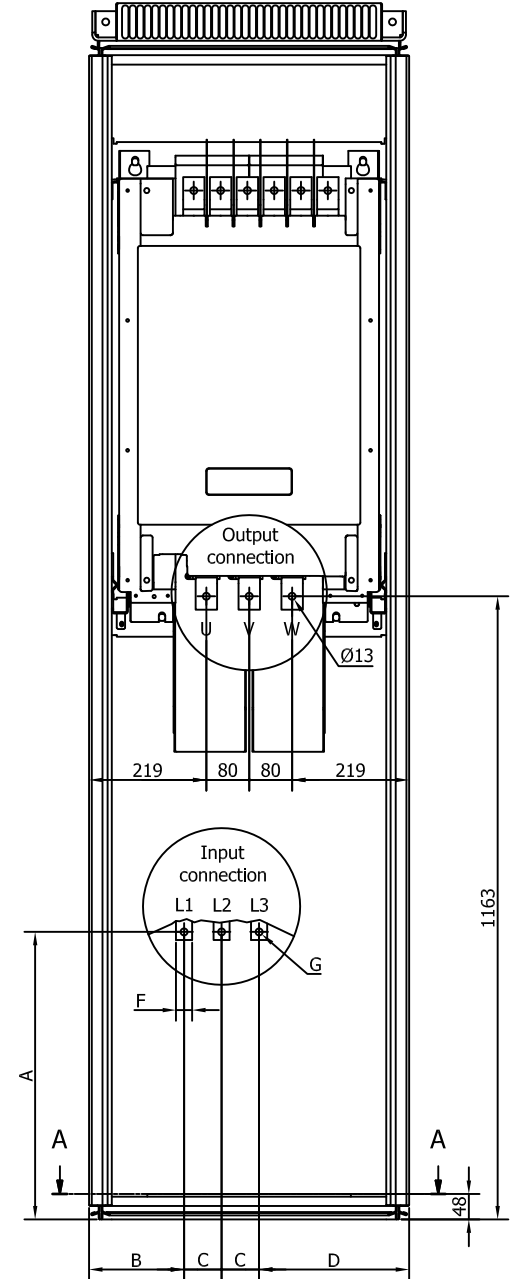
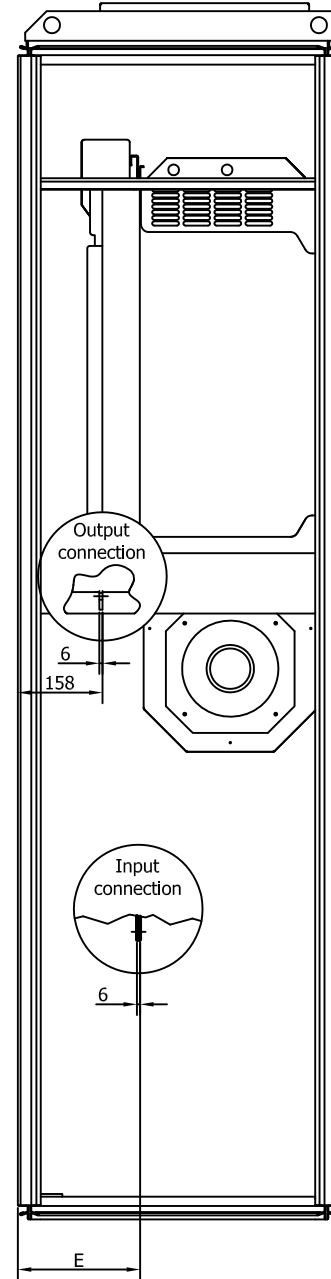
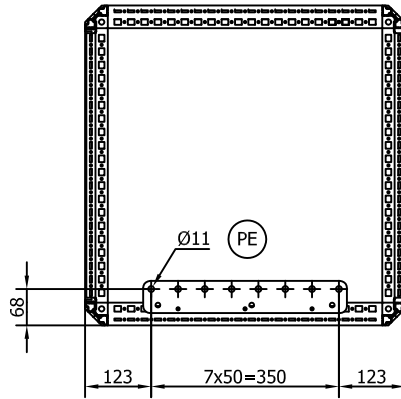


CONNECTION POINTS								
Current (A)	Option	A	B	C	D	E	F	G
125-300	+IFD	467	112	64	356	187	25	Ø11
125-300	+IFD+ICO	467	112	64	356	187	25	Ø11
125-208	+ILS	532	100	35	428	198	20	Ø9
125-208	+ILS+ICO	532	100	35	428	198	20	Ø9
261-300	+ILS	502	102	44	406	192	25	Ø11
261-300	+ILS+ICO	502	102	44	406	192	25	Ø11

Output Terminal 95-185 mm²



A-A (1:10)



CONNECTION POINTS

Current (A)	Option	A	B	C	D	E	F	G
325, 385/690V, 416, 820(FR12)	Basic, No Options	780	187	70	270	218	30	Ø13
385/590V, 460, 520, 1030(FR12)	Basic, No Options	790	132	80	305	216	40	Ø13
261	Basic, No Options	780	187	70	270	218	30	Ø13
385/590V, 460, 520	+ICB	485	154	58	327	216	40	Ø11
325, 385/690V, 416	+ICB	475	199	58	282	219	40	Ø11
261	+ICB	477	207	50	290	218	30	Ø11
325, 385/690V, 416	+IFD	532	188	64	281	229	25	Ø11
325, 385/690V, 416	+IFD+ICO	532	188	64	281	229	25	Ø11
261	+IFD+ICO	532	188	64	281	229	25	Ø11
385/590V, 460, 520	+IFD	477	117	88	304	220	40	Ø13
385/590V, 460, 520	+IFD+ICO	477	117	88	304	220	40	Ø13

A) Update text fields/15.8.2011



Title NXC FR10

500V - 385A, 460A, 520A
690V - 261A, 325A, 385A, 416A
Connection points

Scale 1:10/A3

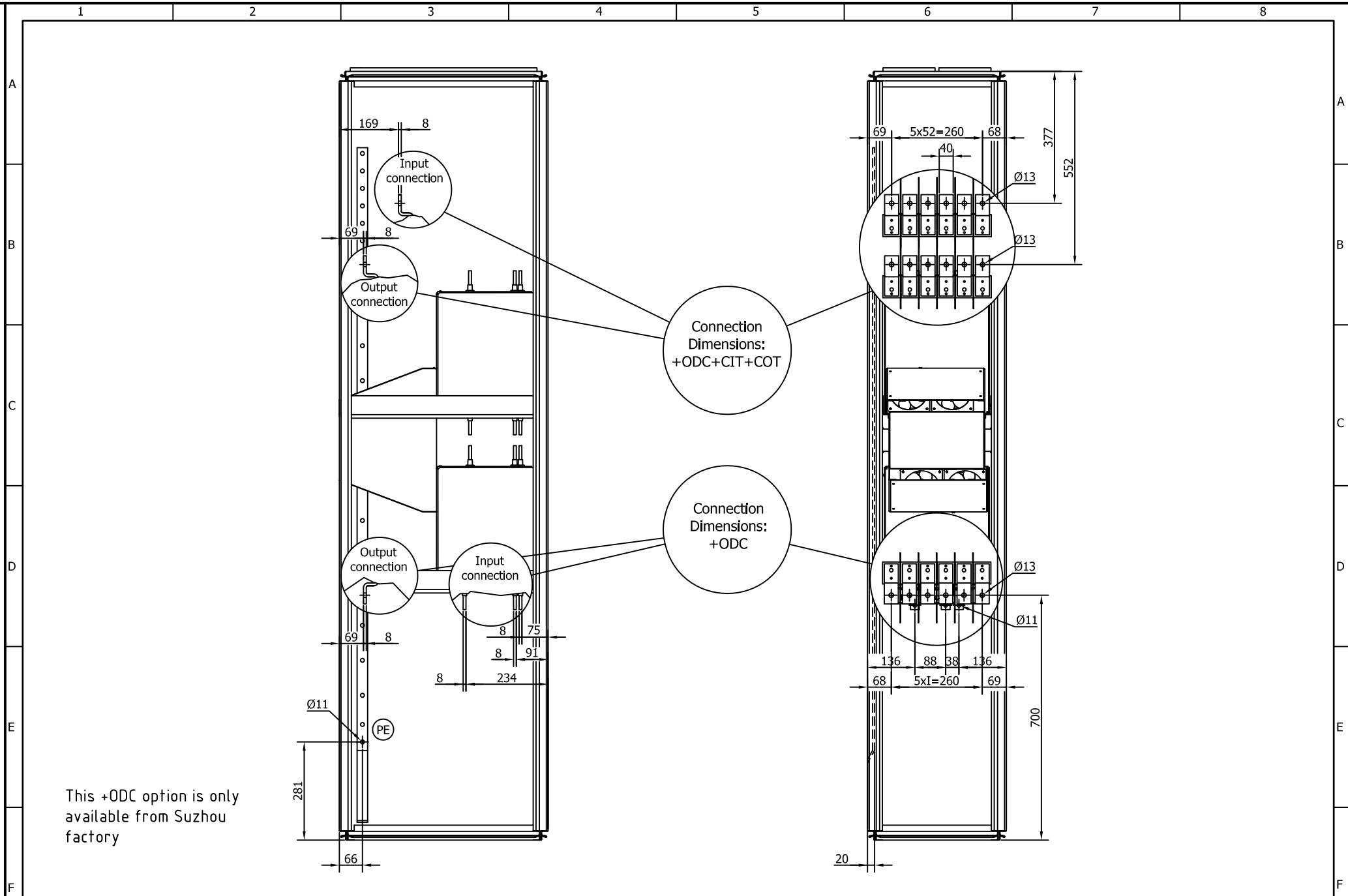
Doc. no.
VL25-0109-01

Revision
A



Sheet
1 / 1

A) Move CIT/COT dimension from top/15.8.2011



This +ODC option is only available from Suzhou factory

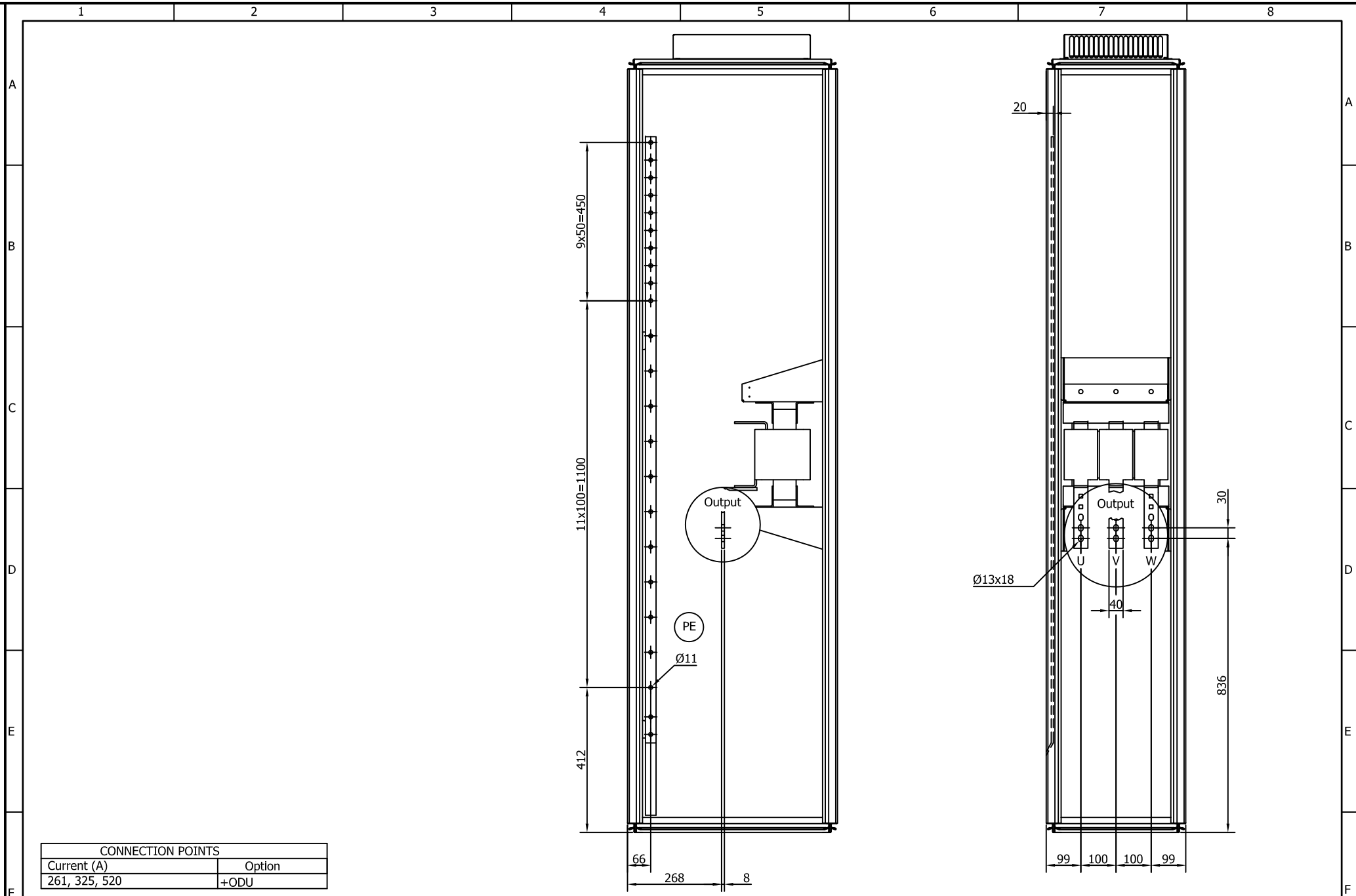


Title NXC FR10
 500V - 385A, 460A, 520A
 690V - 261A, 325A, 385A, 416A
 Connection points

Based on	
Scale	1:10/A3
Doc. no.	VL25-0109-02
Revision	A

Sheet	1 / 1

A) Text field gchanged/16.8.2011



CONNECTION POINTS	
Current (A)	Option
261, 325, 520	+ODU

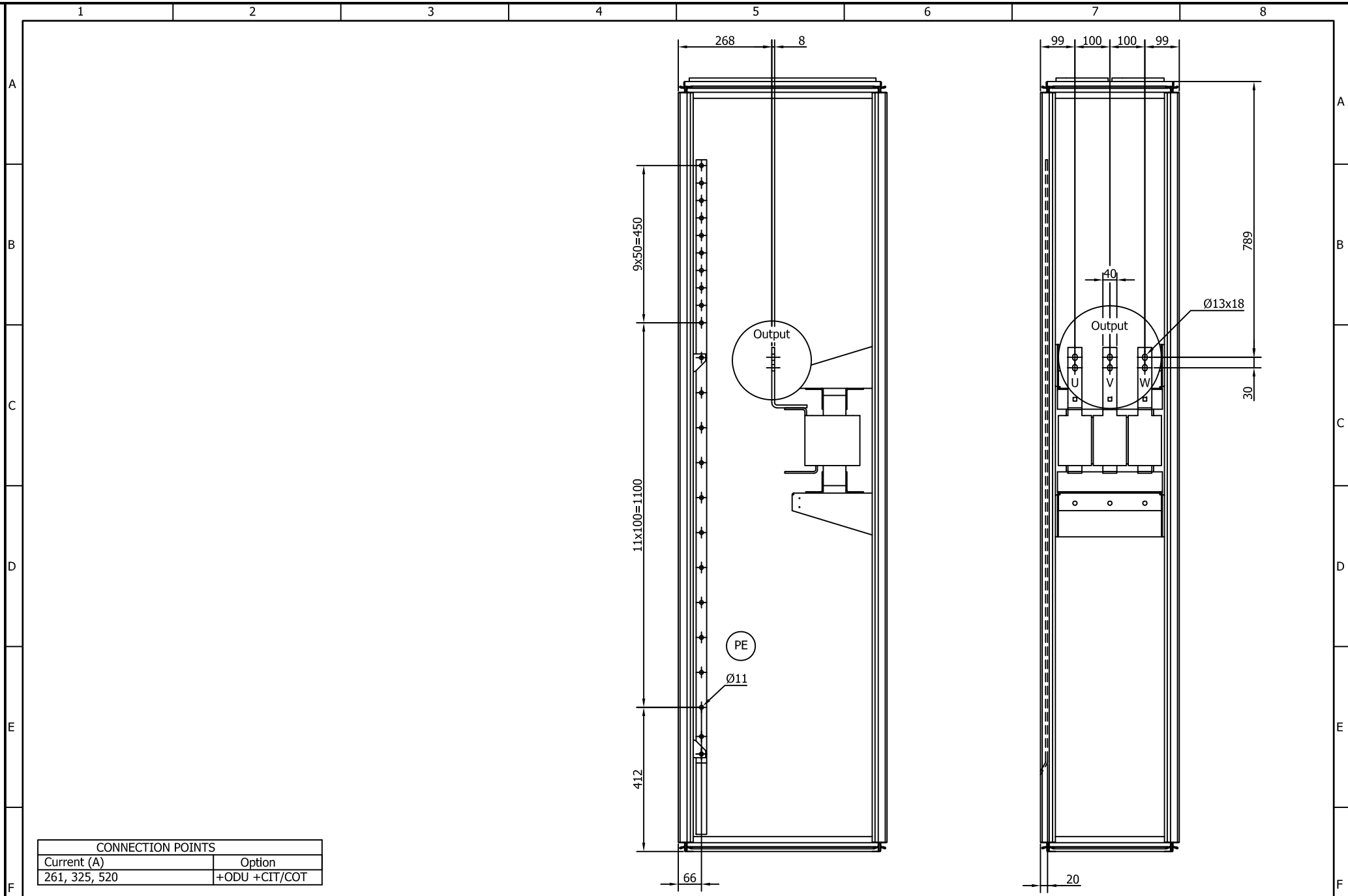


Title NXC FR10
 500V - 385A, 460A, 520A
 690V - 261A, 325A, 385A, 416A
 Connection points

Based on	Scale 1:10/A3
Doc. no. VL25-0109-03	Revision A

Sheet 1 / 1

A) Dimension from top/15.8.2011



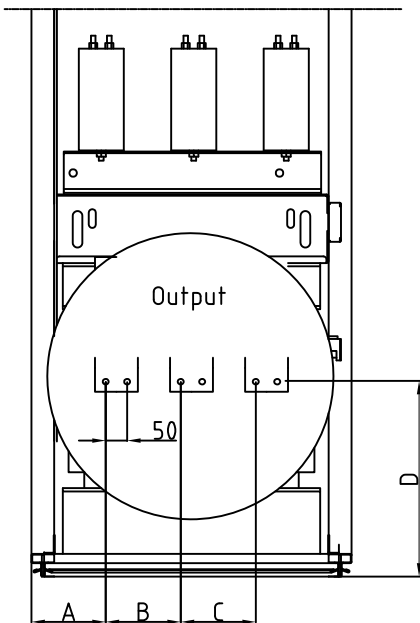
CONNECTION POINTS	
Current (A)	Option
261, 325, 520	+ODU +CIT/COT



Title NXC FR10
 500V - 385A, 460A, 520A
 690V - 261A, 325A, 385A, 416A
 Connection points

Based on
 Scale 1:10/A3
 Doc. no. VL25-0109-04
 Revision A

Sheet 1 / 1



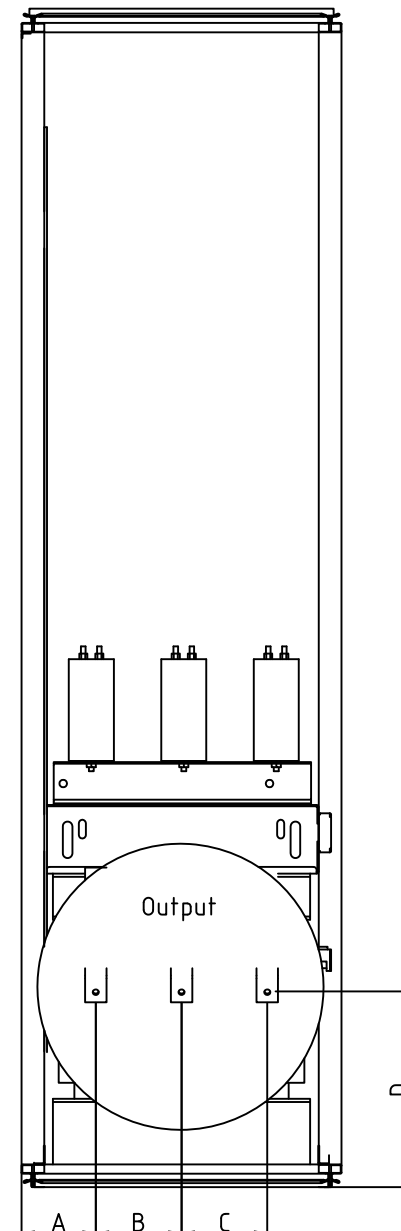
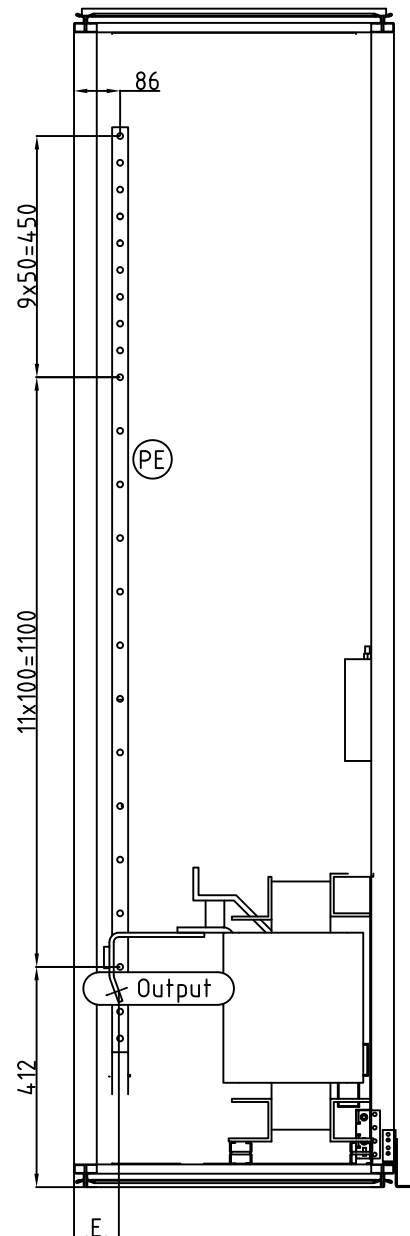
FR Cabinets 0502-590/690V, 650-730

CONNECTION POINTS FR10-12

Current A	A	B	C	D	E
261	138	160	160	370	84
325-385, 650-750	138	160	160	395	84
416/690V, 460/690V, 820/690V	138	160	160	421	84
385/500V, 820/500V	158	140	140	405	79
460-520, 590/500V, 920-1030/500V	158	140	140	395	71
0502-590/690V	153	220	220	455	71
650-730	133	140	140	439	58

CONNECTION POINTS FI10-12

Current A	A	B	C	D	E
261, 460-502/690V	138	160	160	370	84
325-385, 650-750, 590-750	138	160	160	395	84
416/690V, 820/690	138	160	160	421	84
385/500V, 650-820	158	140	140	405	79
460-520, 920-1030	158	140	140	395	71



Title FR10-12, FI10-12
 +OSI 261-1030 A
 Bottom Cabling
 Connection points

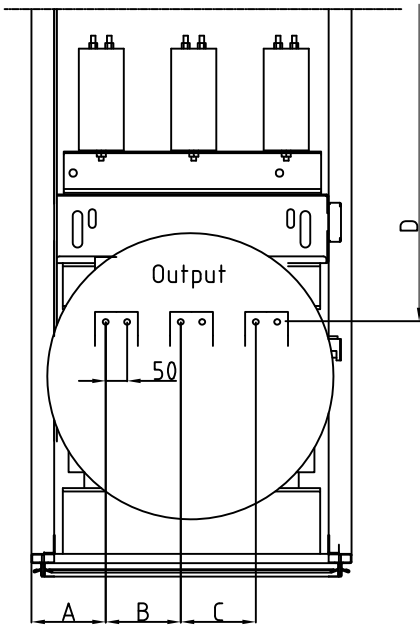
Based on
 Scale 1:10/A3

Doc. no.
 VL25-0109-05

Revision
 A



Sheet
 1 / 1



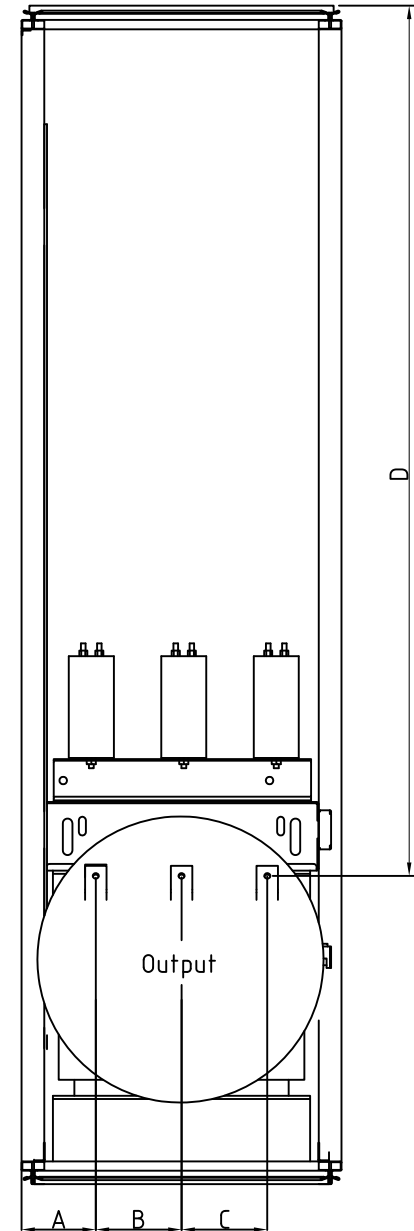
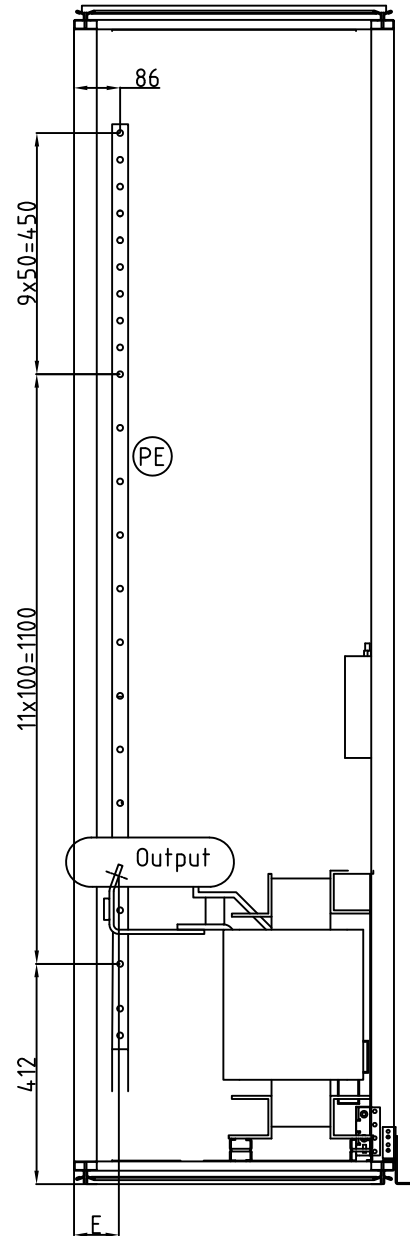
FR Cabinets 0502-590/690V, 650-730

CONNECTION POINTS FR10-12

Current A	A	B	C	D	E
261	138	160	160	1620	84
325-385, 650-750	138	160	160	1595	84
416/690V, 460/690V, 820/690V	138	160	160	1570	84
385/500V, 820/500V	158	140	140	1650	79
460-520, 590/500V, 920-1030/500V	158	140	140	1650	71
0502-590/690V	153	220	220	1550	71
650-730	133	140	140	1530	58

CONNECTION POINTS FI10-12

Current A	A	B	C	D	E
261, 460-502/690V	138	160	160	1620	84
325-385, 650-750, 590-750	138	160	160	1595	84
416/690V, 820/690	138	160	160	1570	84
385/500V, 650-820	158	140	140	1650	79
460-520, 920-1030	158	140	140	1650	71



Title FR10-12, FI10-12
261-1030 A
SIN Top Cabling
Connection points

Based on
Scale 1:10/A3

Doc. no.
VL25-0109-06

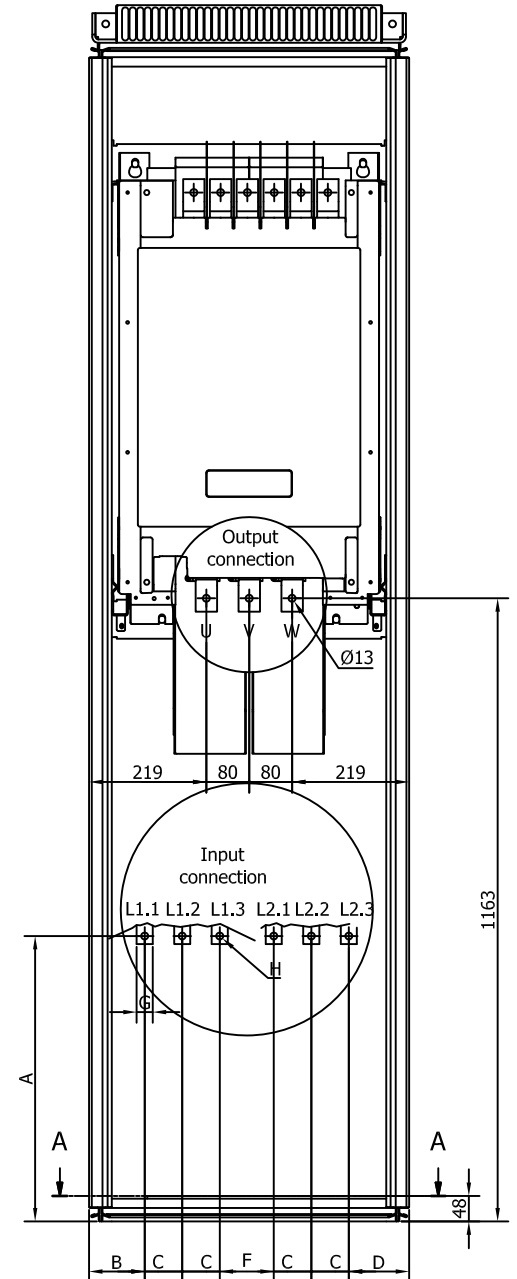
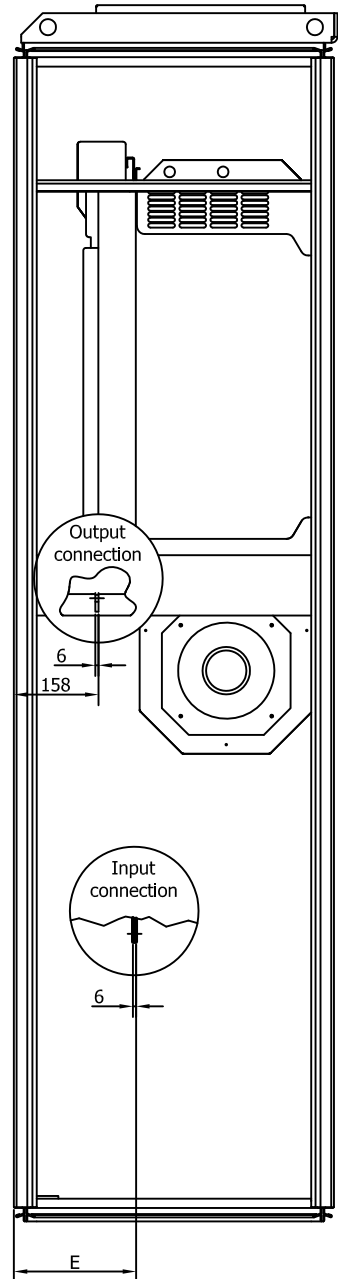
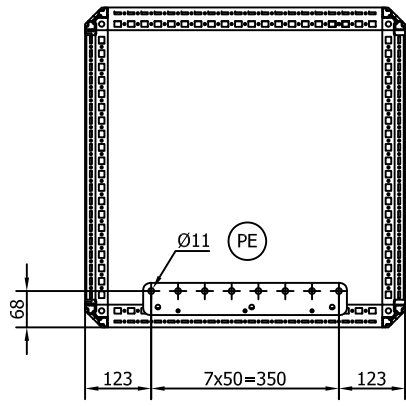
Revision
A



Sheet
1 / 1

1 2 3 4 5 6 7 8

A-A (1 : 10)



CONNECTION POINTS (12-pulse)									
Current (A)	Option	A	B	C	D	E	F	G	H
261-520	ICB	502	90	50	150	216	160	30	Ø13
261-520	IFU	510	90	65	165	216	65	30	Ø11x23



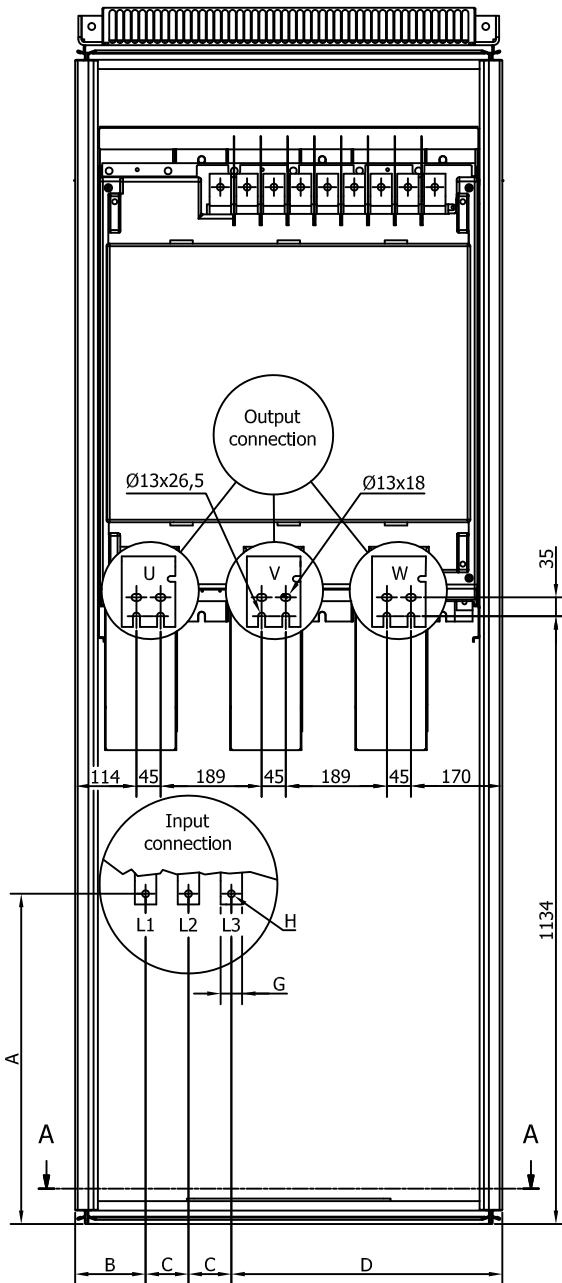
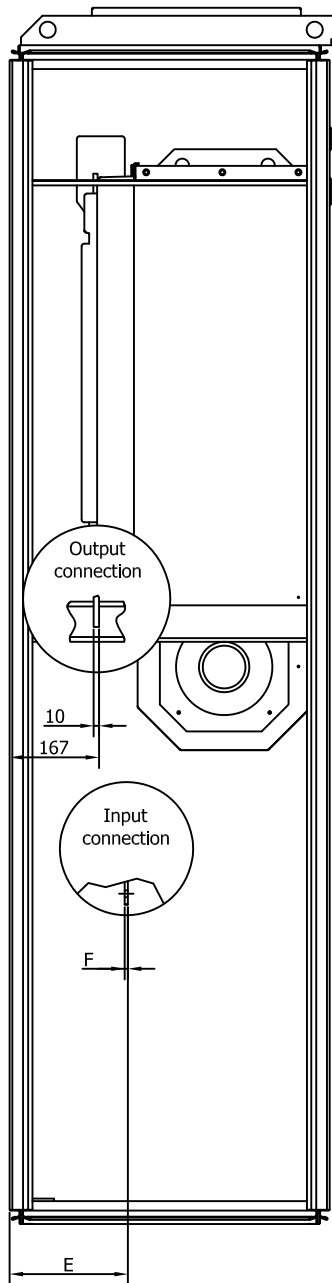
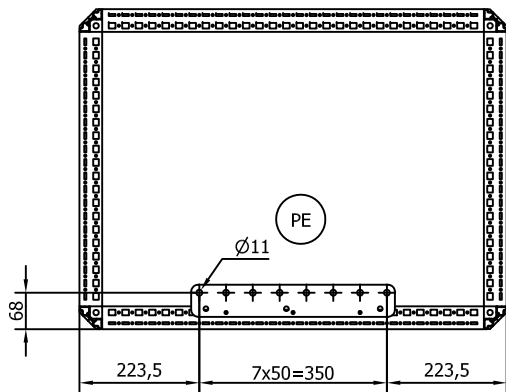
Title NXC FR10
 500V - 385A, 460A, 520A
 690V - 261A, 325A, 385A, 416A
 Connection points 12-pulse

Doc. no. VL25-0109-07	Scale 1:10/A3	Revision A	Sheet 1 / 1
--------------------------	------------------	---------------	----------------

1 2 3 4 5 6 7 8

A
B
C
D
E
F

A-A (1 : 10)



A) Text field changed/17.8.2011

CONNECTION POINTS										
Current (A)	Option	A	B	C	D	E	F	G	H	
460, 502	Basic, No Options	791	132	80	505	221	6	40	Ø13	
460, 502	+IFD	460	122	88	499	221	6	40	Ø13	
502	+ILS	538	148	65	519	210	5	40	Ø13	
502	+IFD +ICO	462	122	88	499	217	6	40	Ø13	
502	+ILS +ICO	538	148	65	519	205	6	40	Ø13	



Title NXC FR11
500V - 590A, 650A, 730A
690V - 460A, 502A, 590A
Connection points

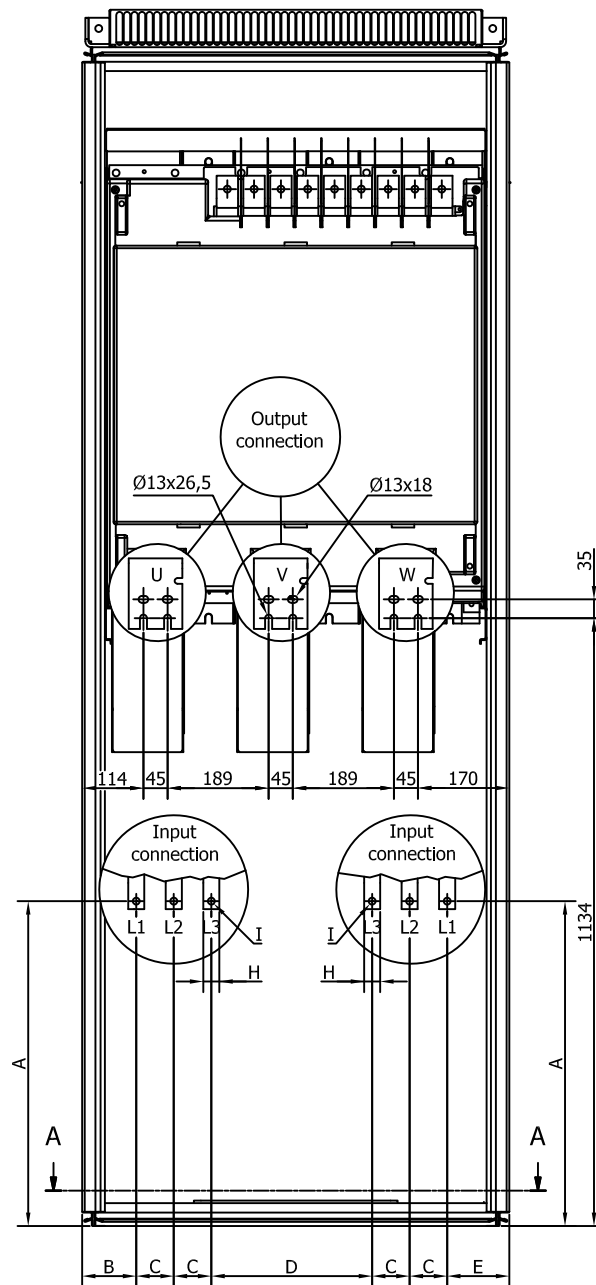
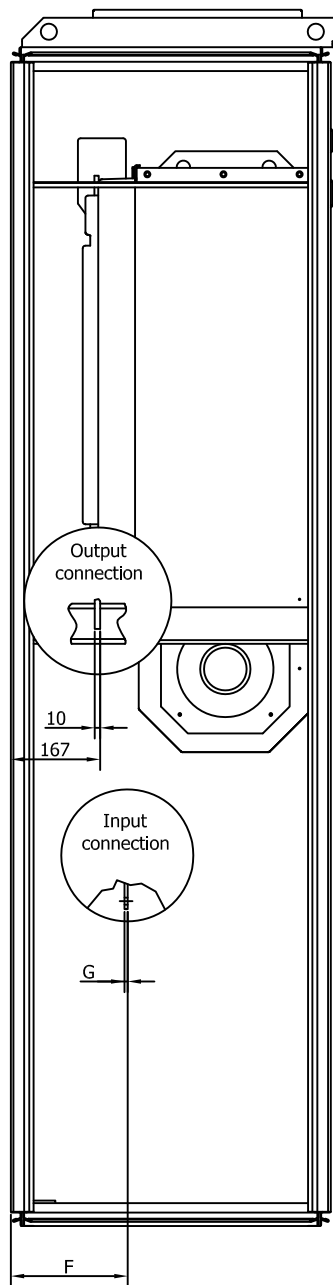
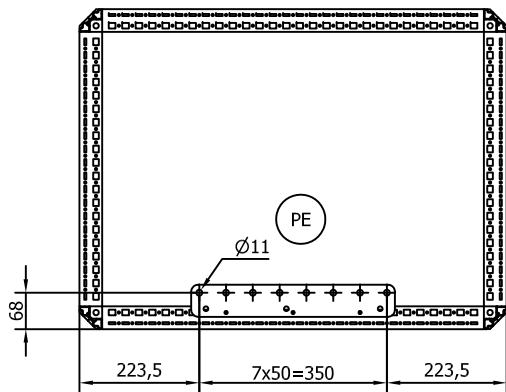
Based on
Scale 1:10/A3
Doc. no. VL25-0119-01
Revision A

Sheet 1 / 1

1 2 3 4 5 6 7 8

A
B
C
D
E
F

A-A (1 : 10)



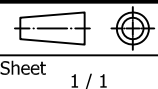
CONNECTION POINTS		A	B	C	D	E	F	G	H	I
Current (A)	Option									
590/690V, 590/500V, 650, 730	Basic, No Options	781	101	70	300	116	218	6	30	Ø13
590/690V, 590/500V, 650, 730	+ICB	534	124	47	346	139	229	5	20	Ø10
590/690V, 590/500V, 650, 730	+ILS	554	153	44	351	117	228	4	25	Ø11
590/690V, 590/500V, 650, 730	+IFD	532	102	64	312	127	229	5	25	Ø11
590/690V, 590/500V, 650, 730	+IFD +ICO	532	102	64	312	127	229	5	25	Ø11
590/690V, 590/500V, 650, 730	+ILS +ICO	554	153	44	351	117	228	4	25	Ø11
460/690V-12p, 502/690V-12p	+ICB	525	104	47	347	161	228	5	20	Ø11

A) Spreadhead updated/19.8.2011 TKu



Title NXC FR11
500V - 590A, 650A, 730A
690V - 460A, 502A, 590A
Connection points

Based on
Scale 1:10/A3
Doc. no. VL25-0119-02
Revision A



A) Dimension from top/26.8.2011

A

B

C

D

E

F

A

B

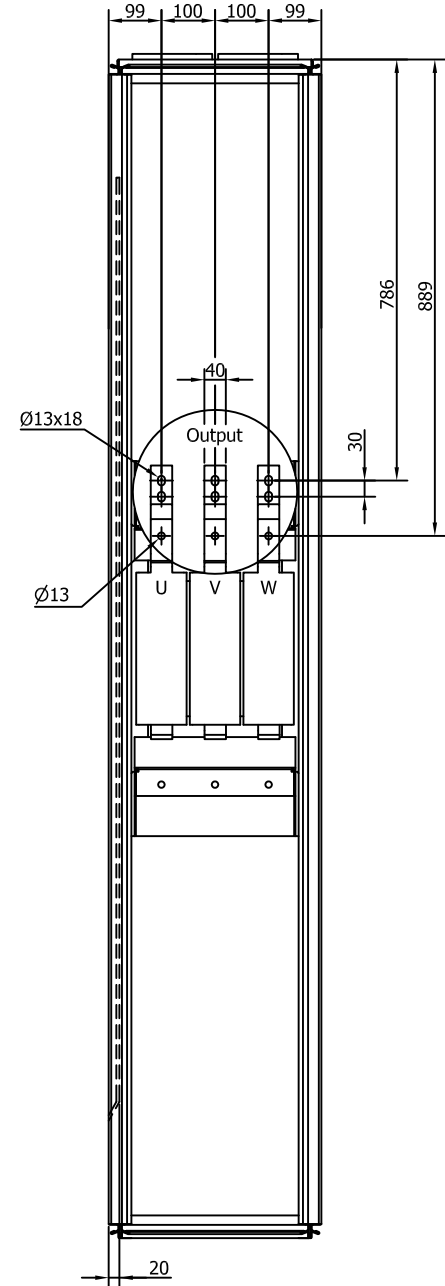
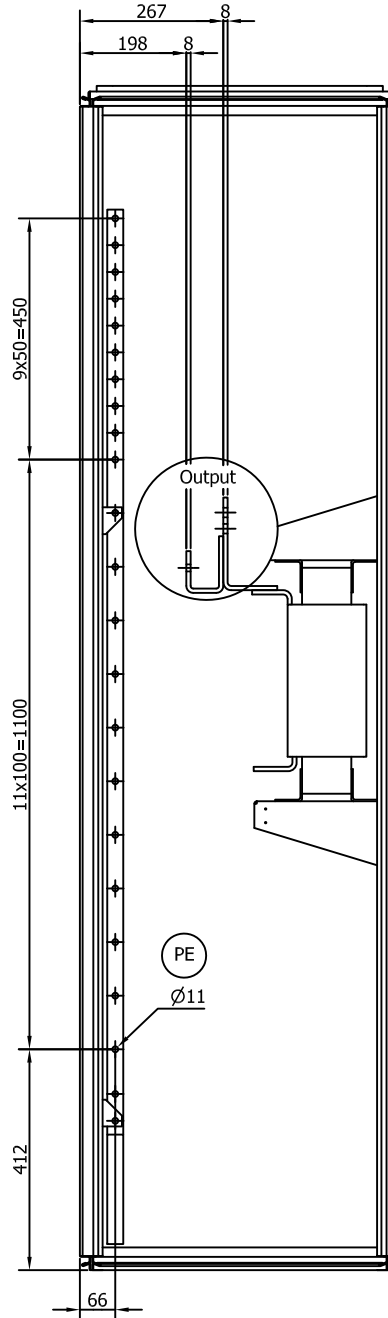
C

D

E

F

1 2 3 4 5 6 7 8



CONNECTION POINTS	
Current (A)	Option
590, 730	+ODU +CIT/COT



Title NXC FR11
 500V - 590A, 650A, 730A
 690V - 460A, 502A, 590A
 Connection points

Based on	Scale 1:10/A3
Doc. no. VL25-0119-03	Revision A

Sheet 1 / 1

A) Text updated/30.8.2011

A

B

C

D

E

F

A

B

C

D

E

F

1

2

3

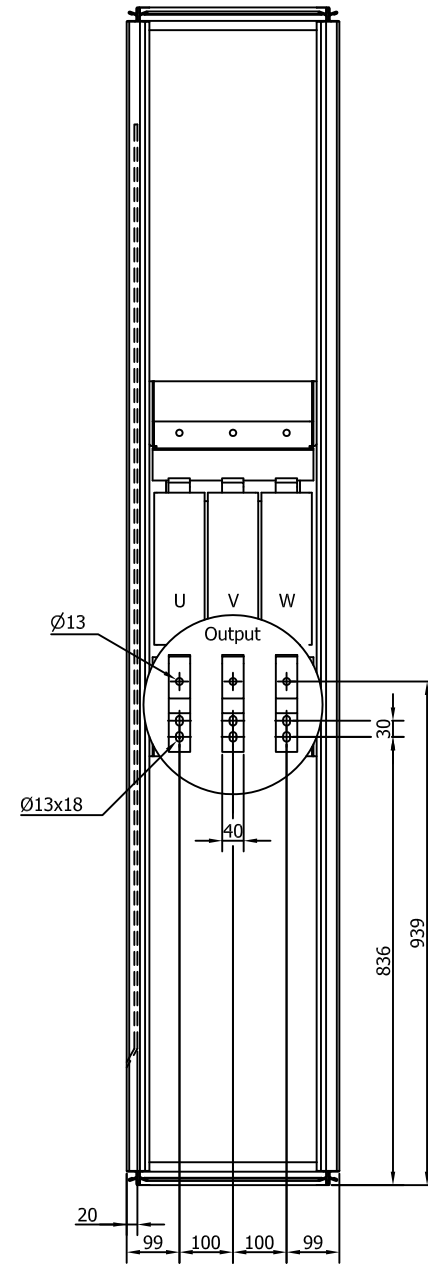
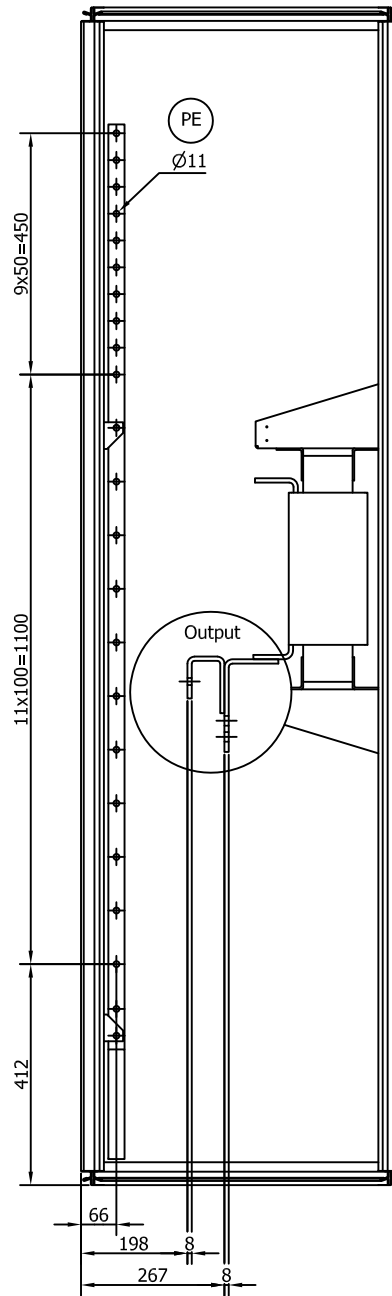
4

5

6

7

8



CONNECTION POINTS	
Current (A)	Option
590, 730	+ODU



Title NXC FR11
 500V - 590A, 650A, 730A
 690V - 460A, 502A, 590A
 Connection points

Based on	Scale 1:10/A3
Doc. no. VL25-0119-04	Revision A

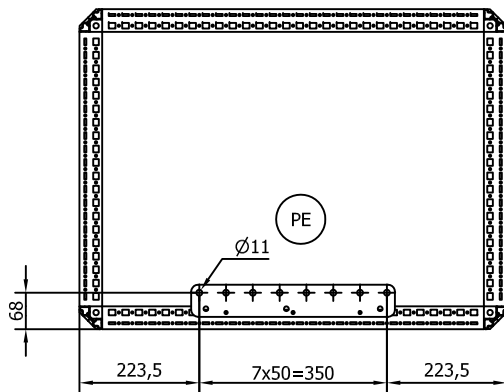


Sheet 1 / 1

1 2 3 4 5 6 7 8

A

A-A (1 : 10)



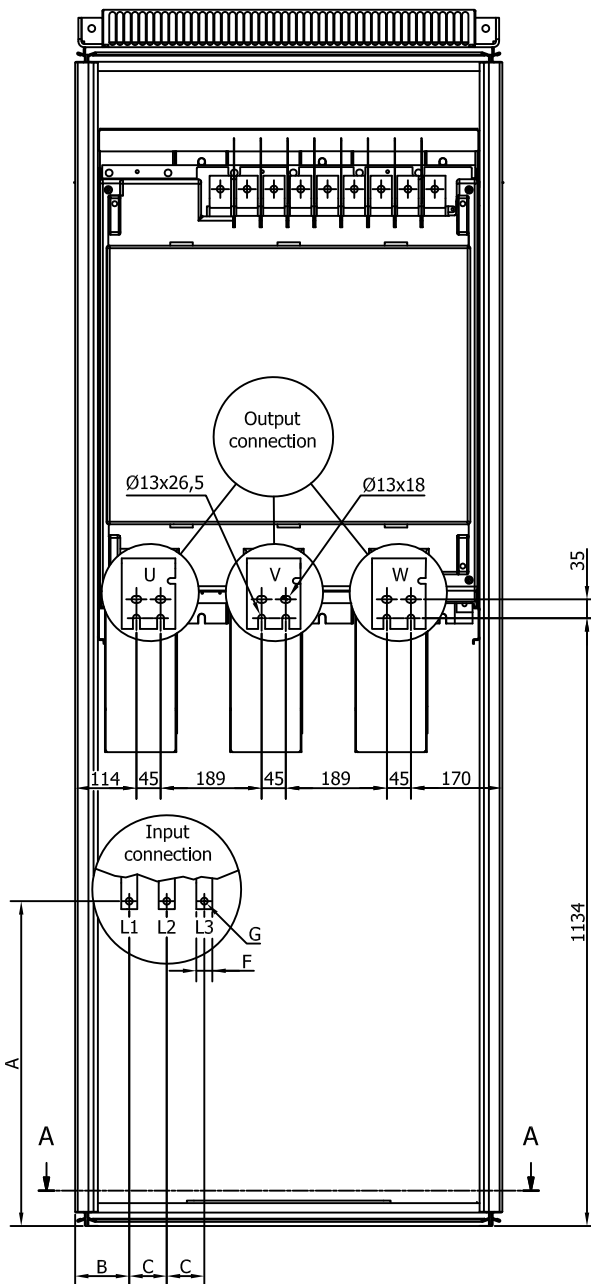
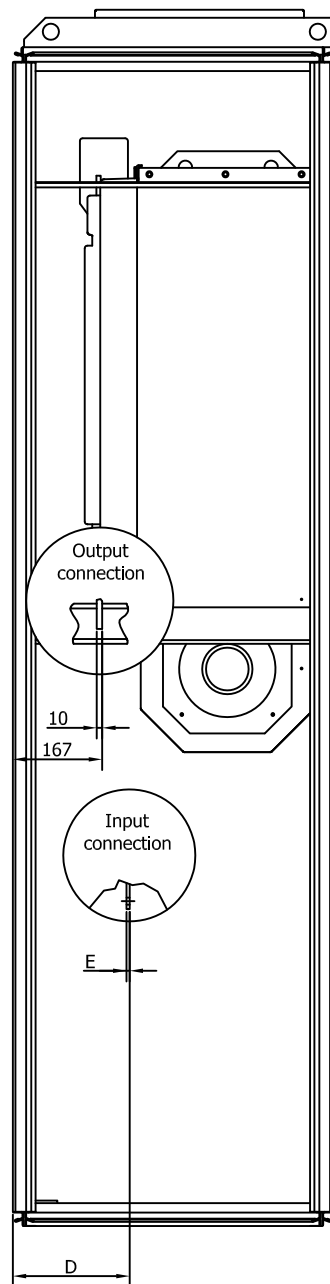
B

C

D

E

F



A

B

C

D

E

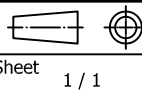
F

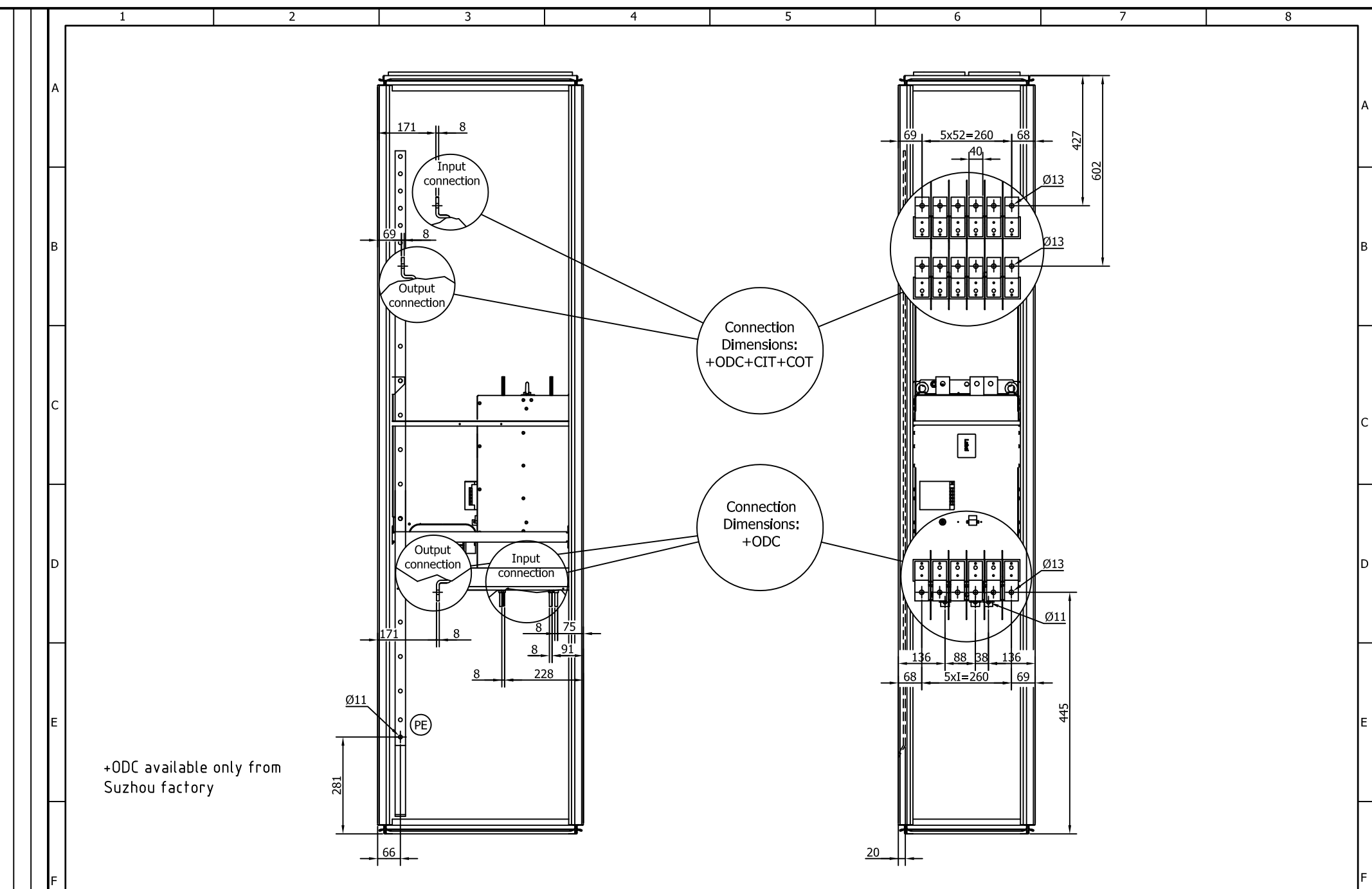
CONNECTION POINTS								
Current (A)	Option	A	B	C	D	E	F	G
460/690V, 502/590A	Basic, No Options	781	101	70	218	6	30	Ø13
460/690V, 502/590A	+ICB	525	164	47	228	5	20	Ø10
460/690V, 502/590A	+ILS	538	148	65	210	4	39	Ø11
460/690V, 502/590A	+IFD	462	121	88	216	5	25	Ø11
460/690V, 502/590A	+IFD +ICO	462	121	88	216	5	25	Ø11
460/690V, 502/590A	+ILS +ICO	538	148	65	210	4	39	Ø11



Title NXC FR11
690V - 460A, 502A, 590A
Connection points

Based on
Scale 1:10/A3
Doc. no. VL25-0119-05
Revision A





+ODC available only from Suzhou factory

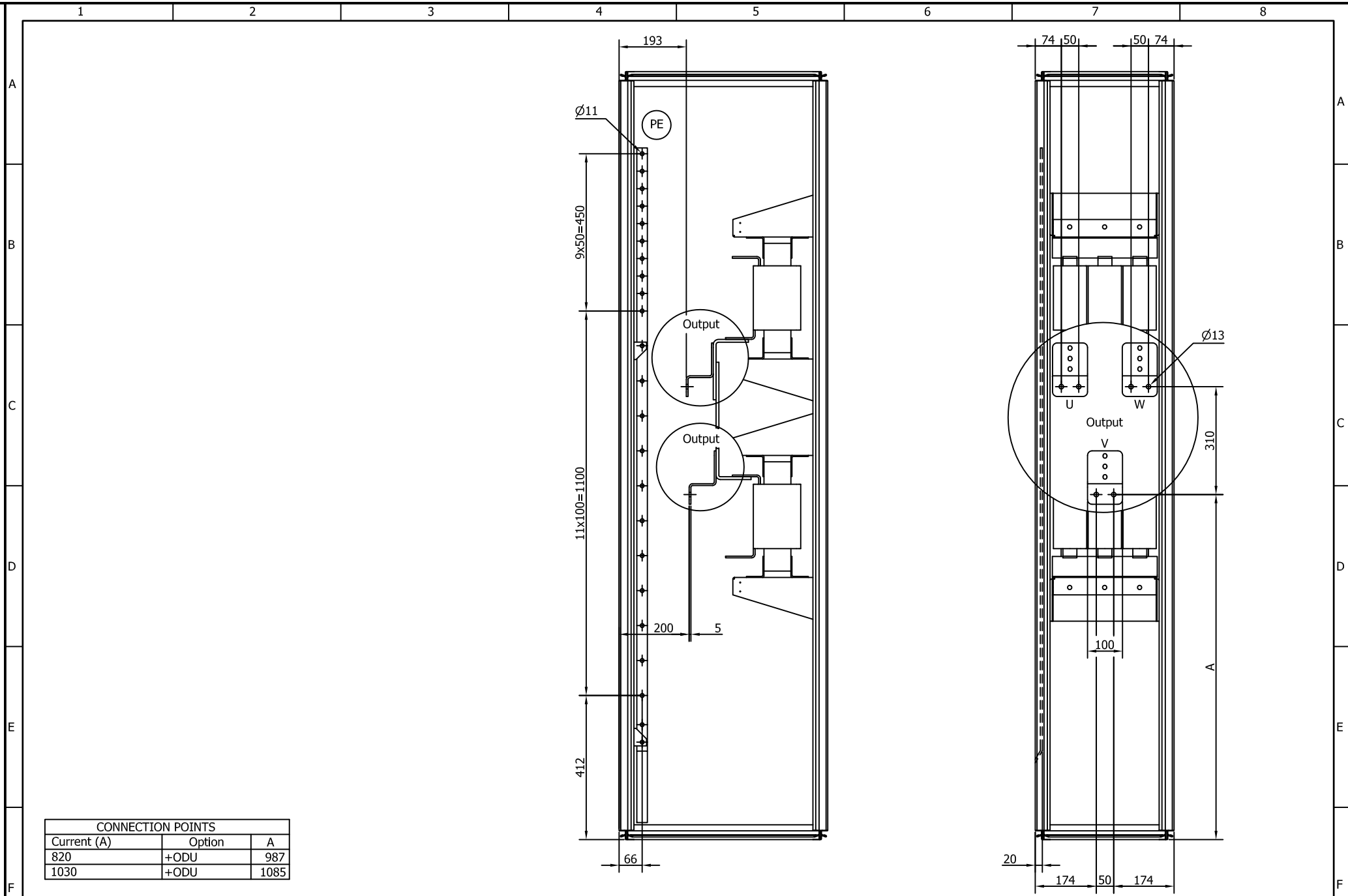


Title NXCFR11
500V - 650A,730A
Connection points

Based on	
Scale	1:10/A3
Doc. no.	VL25-0119-06
Revision	A

Sheet 1 / 1

A) Text field updated/31.8.2011



CONNECTION POINTS		
Current (A)	Option	A
820	+ODU	987
1030	+ODU	1085



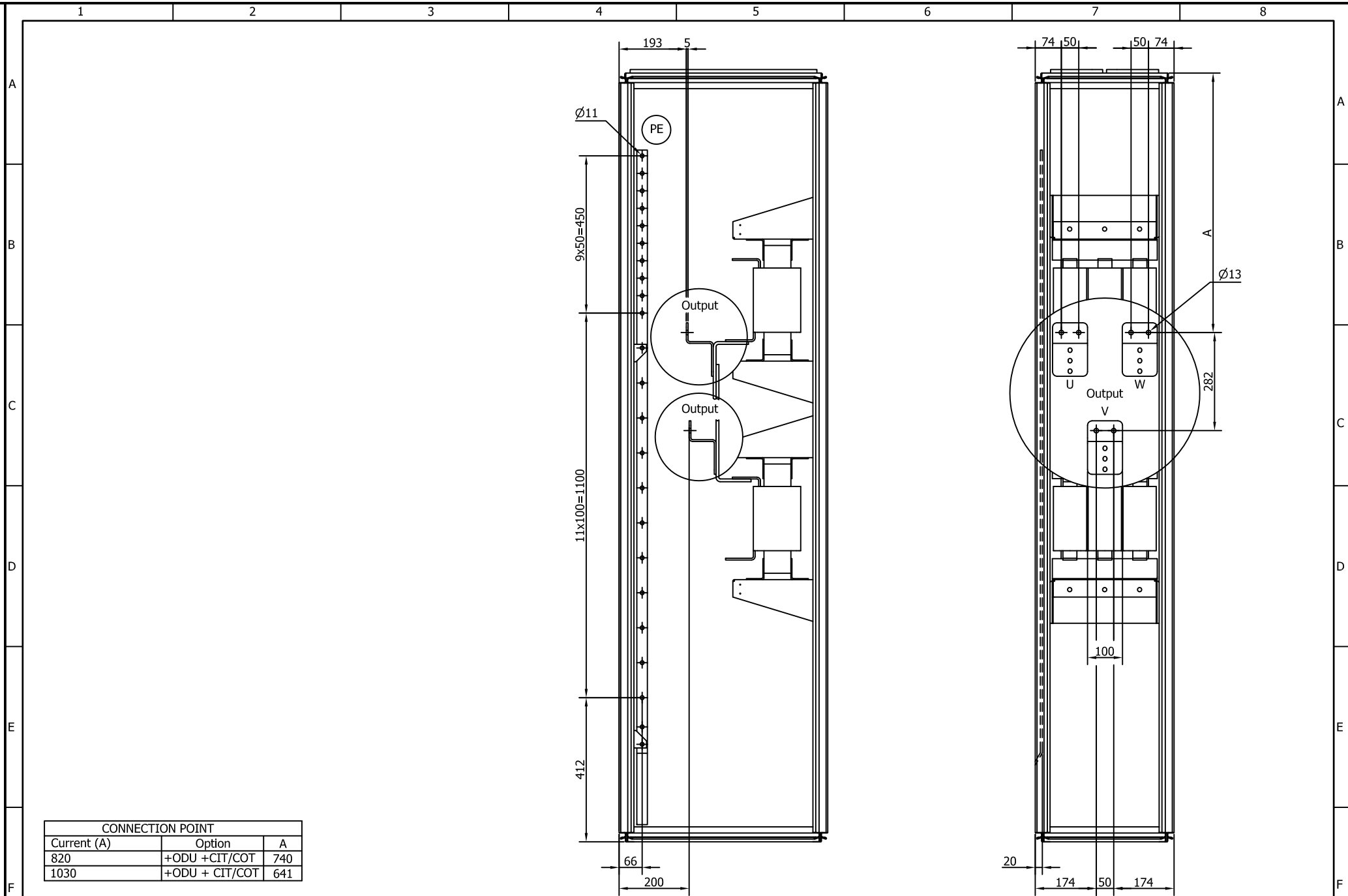
Title NXC FR12
 500V - 820A, 920A, 1030A
 690V - 650A, 750A, 820A
 Connection points

Based on
 Scale 1:10/A3
 Doc. no. VL25-0129-01
 Revision A



Sheet 1 / 1

A) Move dimensioning from top/12.9.2011



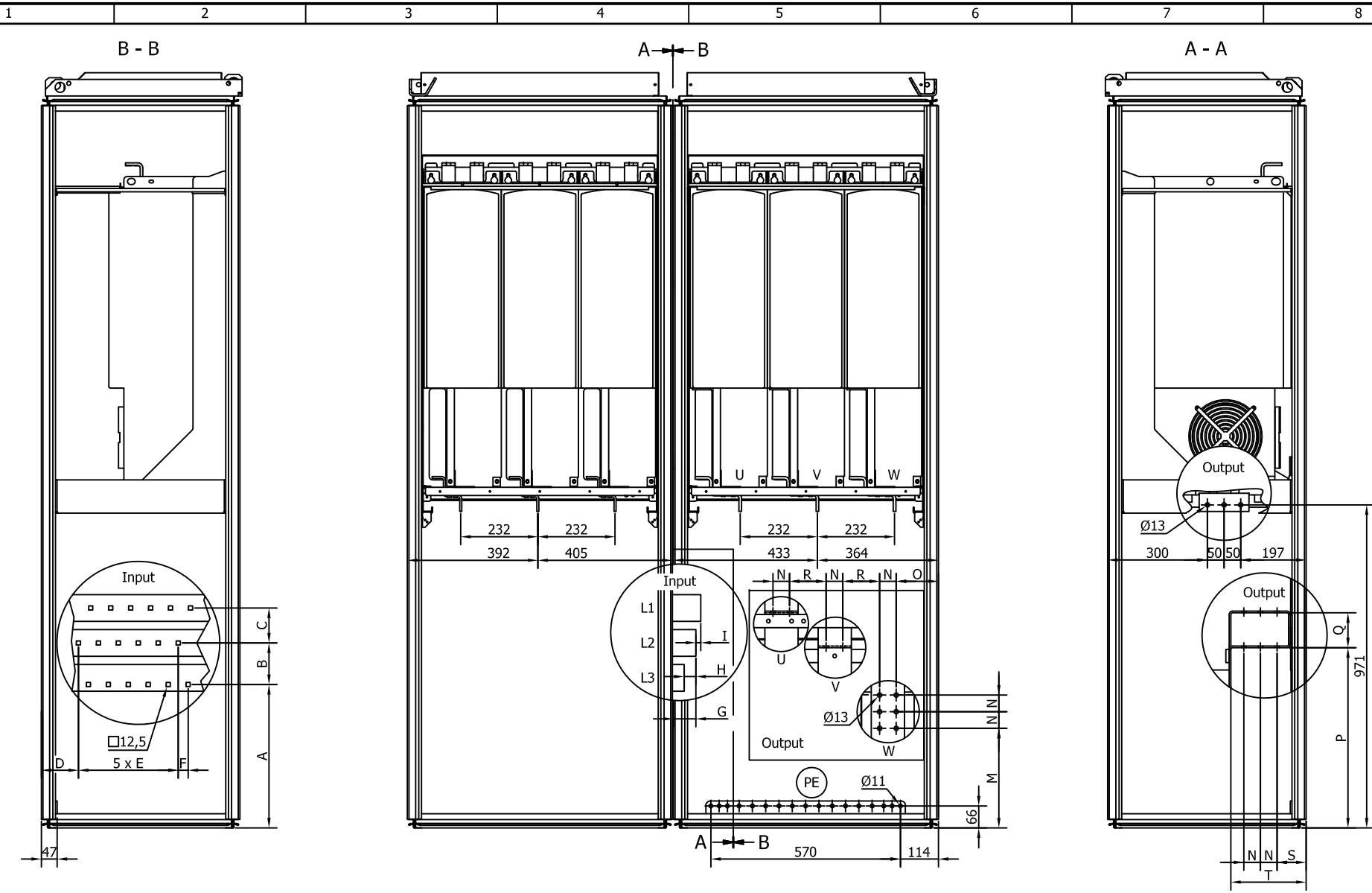
CONNECTION POINT		
Current (A)	Option	A
820	+ODU +CIT/COT	740
1030	+ODU + CIT/COT	641



Title NXC FR12
 500V - 820A, 920A, 1030A
 690V - 650A, 750A, 820A
 Connection points

Based on	Scale 1:10/A3
Doc. no. VL25-0129-02	Revision A

Sheet 1 / 1



		INPUT CONNECTION POINTS									
Current (A)	Option	A	B	C	D	E	F	G	H	I	
1030, 1180, 1300, 1450	+IFD	611	125	105	112	60	30	68	35	15	
1150	+ICB										

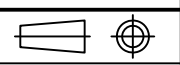
		OUTPUT CONNECTION POINTS									
Current (A)	Option	M	N	O	P	Q	R	S	T		
1450	+ODU +COT	439	50	148	681	105	110	87	226		

A) Update text fields/12.9.2011

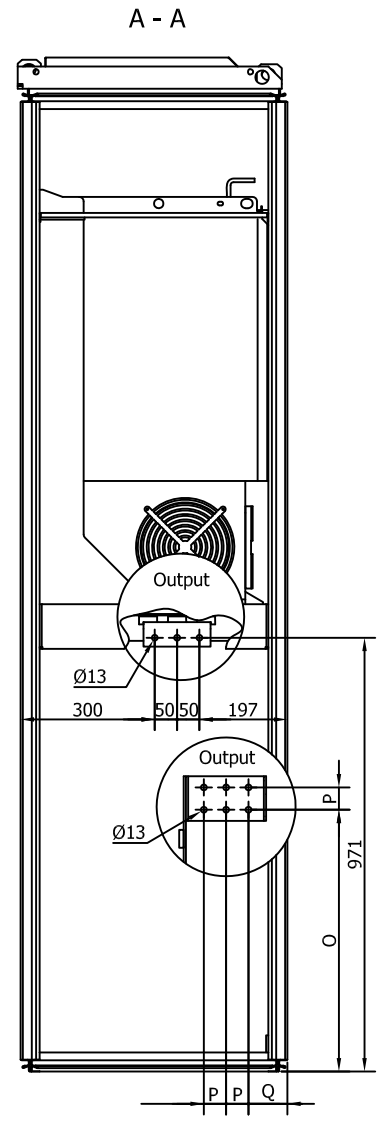
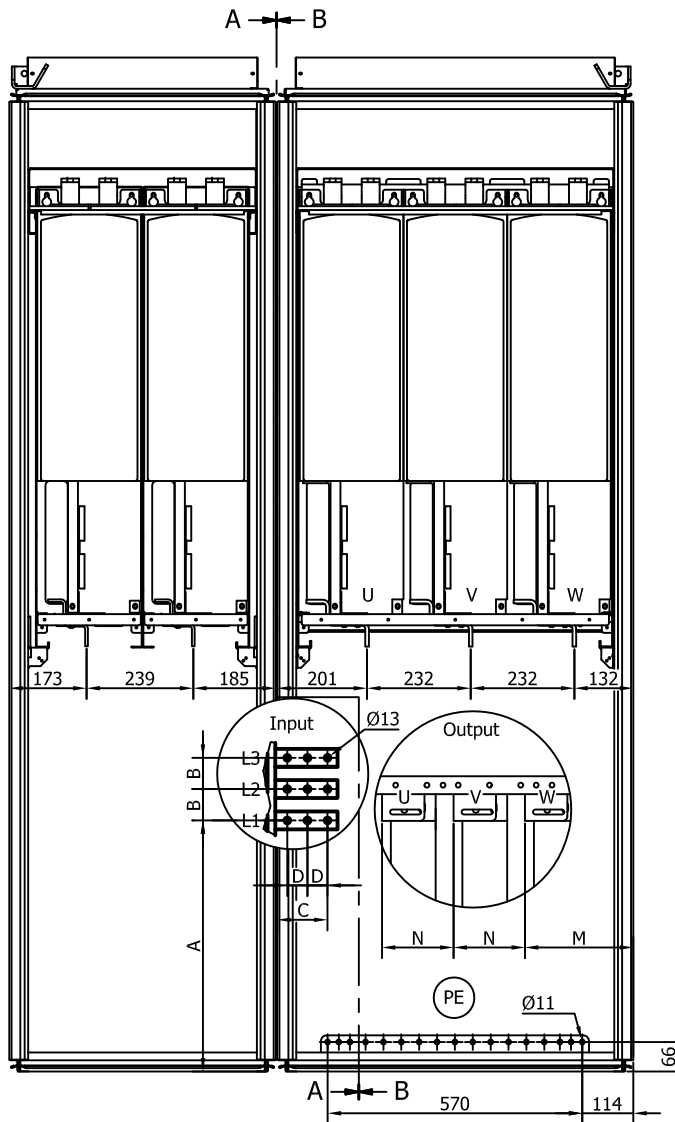
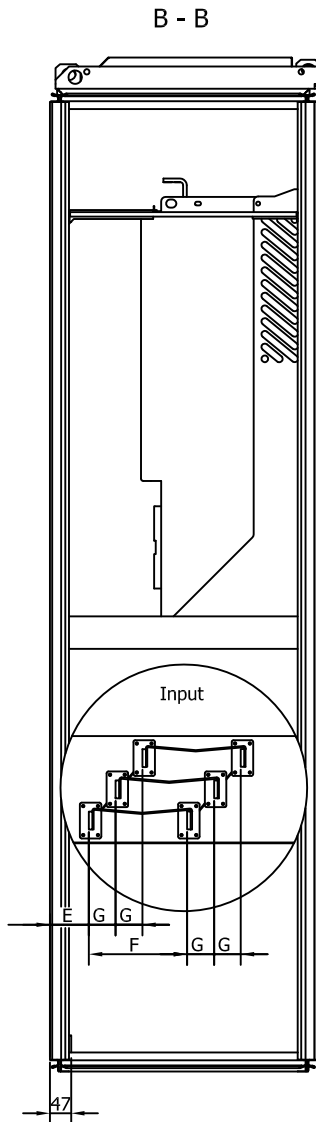


Title NXC FR13
 500V - 1150A, 1300A, 1450A
 690V - 920A, 1030A, 1180A
 Connection points

Based on
 Scale 1:12/A3
 Doc. no. VL25-0139-01
 Revision A
 Sheet 1 / 1



A) Text fields updated/12.9.2011



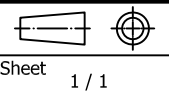
INPUT CONNECTION POINTS								
Current (A)	Option	A	B	C	D	E	F	G
1150, 1180	+ICB	762	70	112	45	79	220	60
920, 1030, 1180, 1150, 1300, 1450	+ODC							

OUTPUT CONNECTION POINTS						
Current (A)	Option	M	N	O	P	Q
1450	+ODU	243	160	706	50	87
1180	+ODU	215	140	706	50	117
920, 1030, 1180, 1150, 1300, 1450	+ODC					

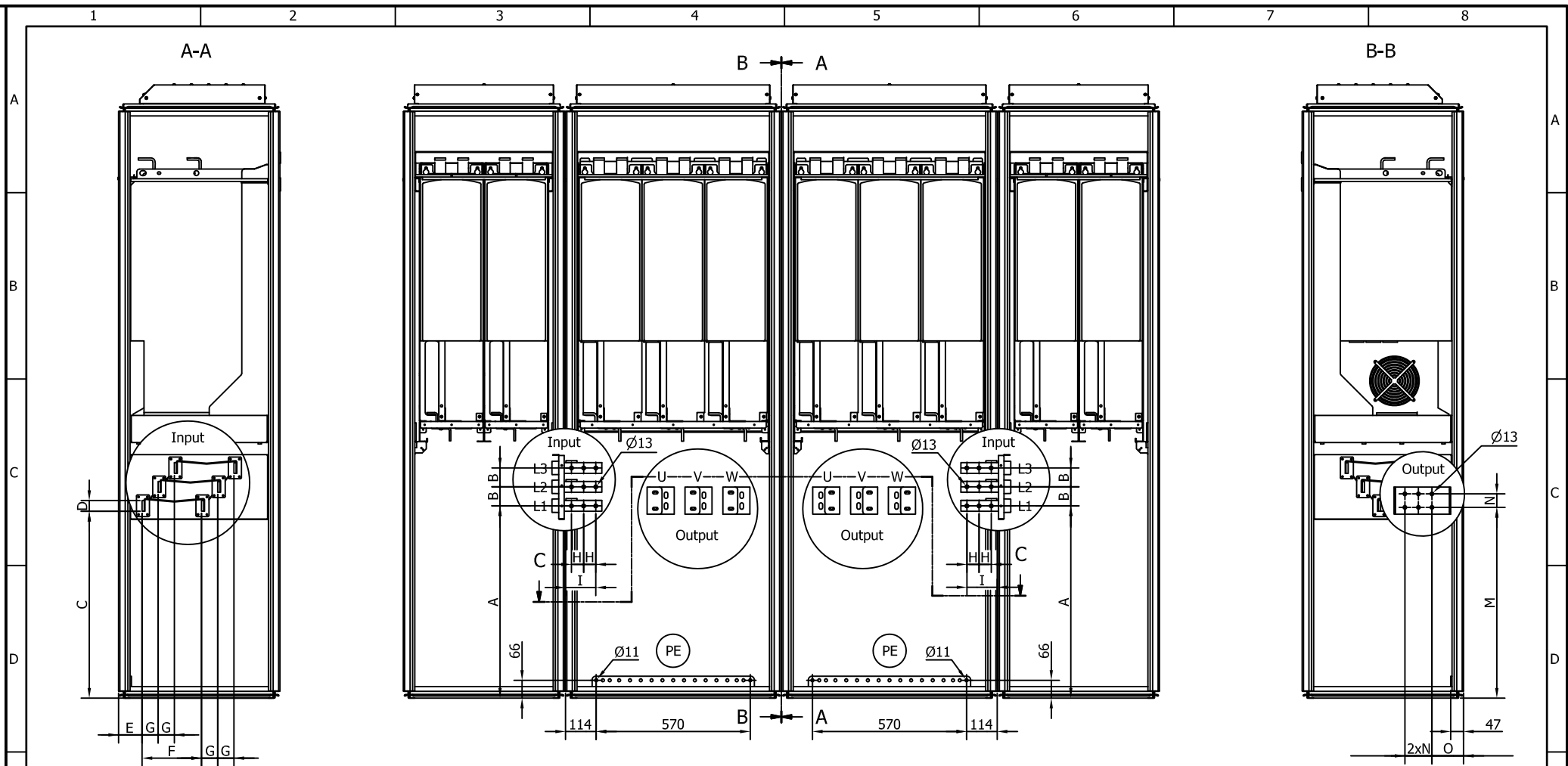


Title NXC FR13
 500V - 1150A, 1300A, 1450A
 690V - 920A, 1030A, 1180A
 Connection points

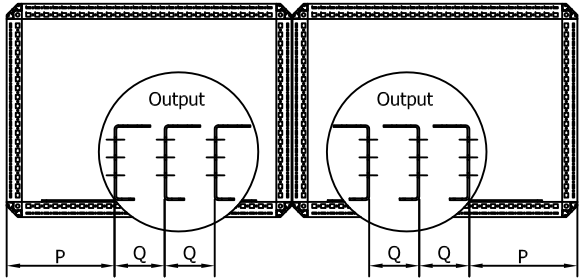
Based on
 Scale 1:12/A3
 Doc. no. VL25-0139-02
 Revision A



A) Update text fields/14.9.2011 TKu



INPUT CONNECTION POINTS										
Current (A)	Option	A	B	C	D	E	F	G	H	I
1500-12p, 1770, 1900	+ICB(+ODU)	711	70	691	40	87	220	60	45	112
2150, 2250	+ICB(+ODU)	761	70	741	40	87	220	60	45	112



OUTPUT CONNECTION POINTS					
Current (A)	Option	M	N	O	Q
1770, 1900, 2150, 2250	+ICB(+ODU)	706	50	117	302
1500-12p					140



Title NXC FR14
 500V - 1770A, 2150A
 690V - 1500A, 1900A, 2250A, 1500A/690V-12-p
 Connection points

Based on
 Scale 1:15/A3
 Doc. no. VL25-0149-01
 Revision A
 Sheet 1 / 1

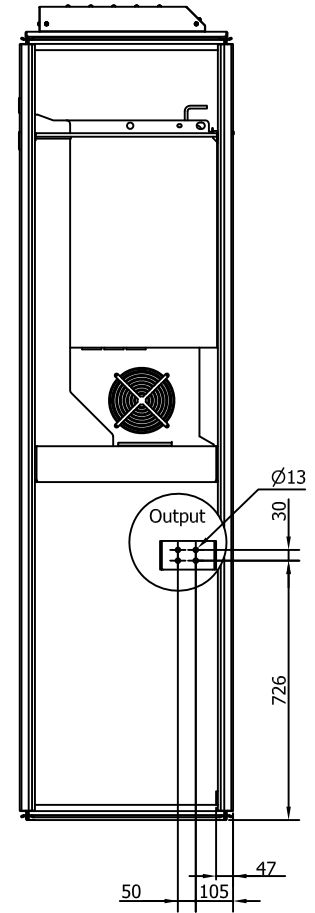
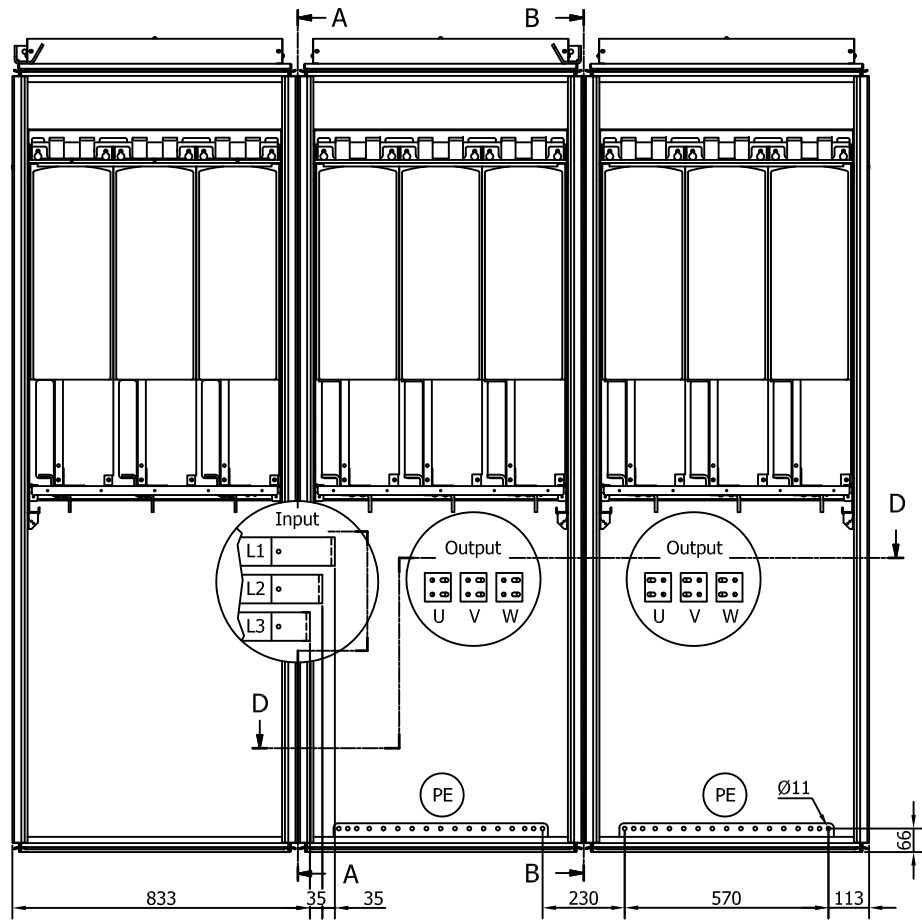
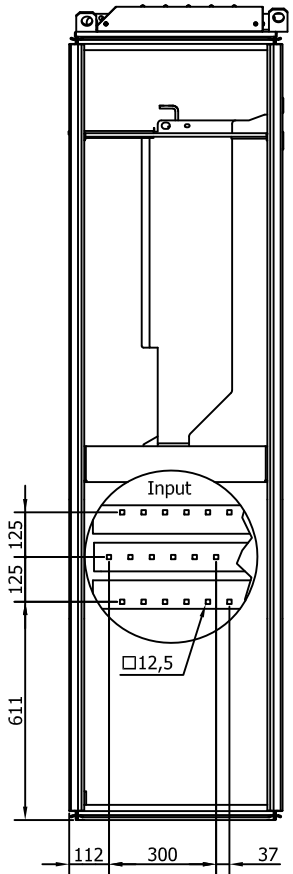
1 2 3 4 5 6 7 8

A-A

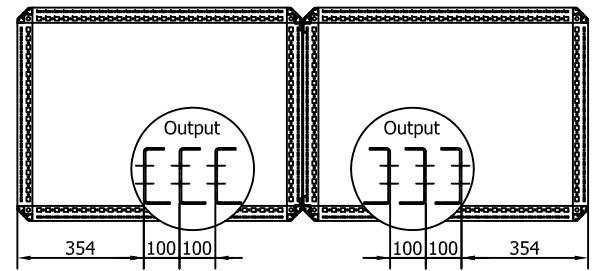
B-B

A
B
C
D
E
F

A
B
C
D
E
F



D-D



CONNECTION POINTS	
Current (A)	Option
1500	+ICB(+ODU)



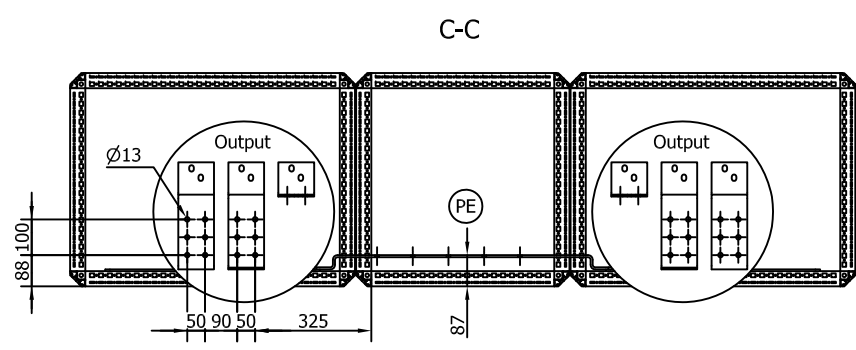
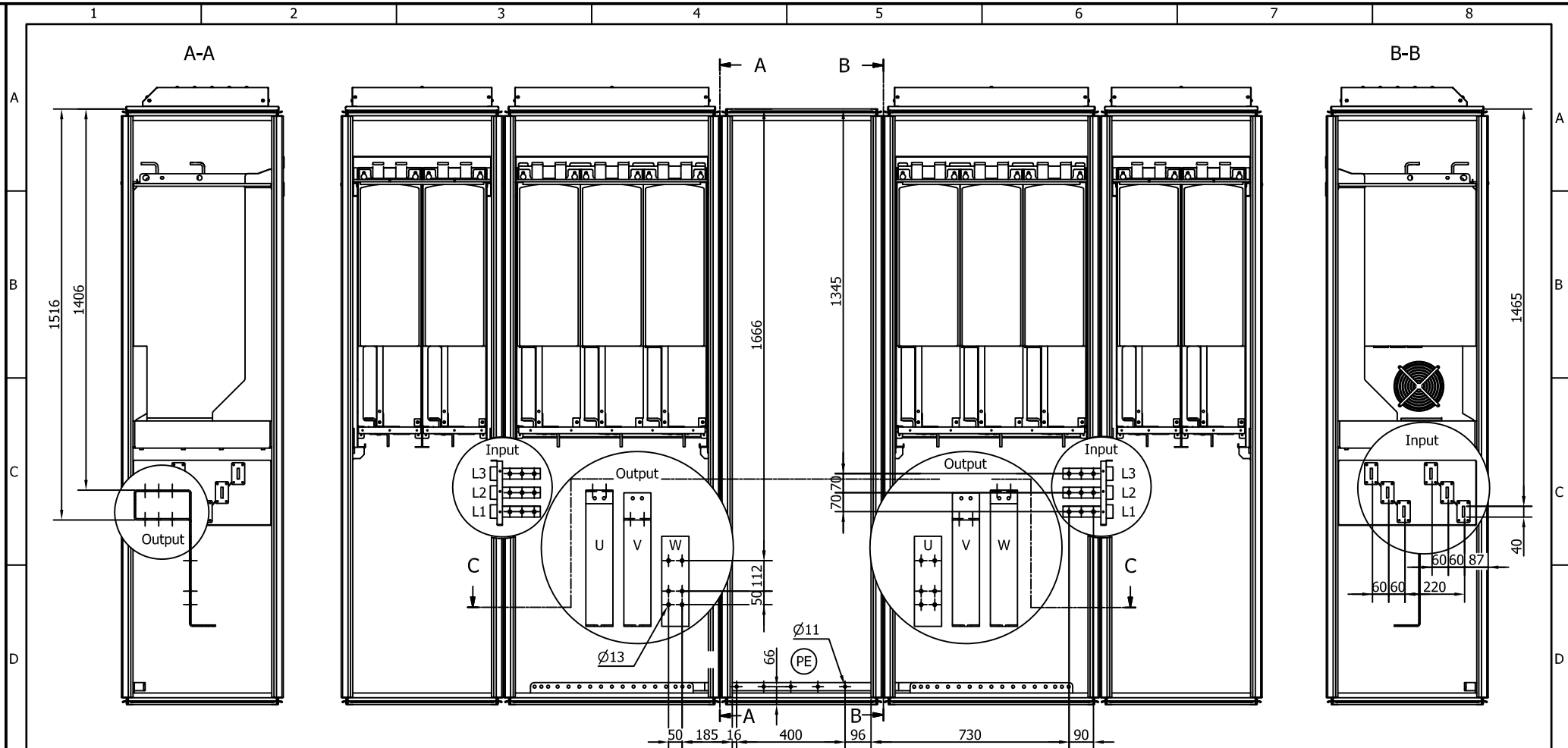
Title NXC FR14
500V - 1770A, 2150A
690V - 1500A, 1900A, 2250A
Connection points

Based on	Scale 1:15/A3
Doc. no. VL25-0149-02	Revision A

Sheet 1 / 1

A) Text fields update/15.9.2011

A) Update text fields/15.9.2011 TKu



CONNECTION POINTS	
Current (A)	Option
1770, 1900, 2150, 2250	+CIT/+COT

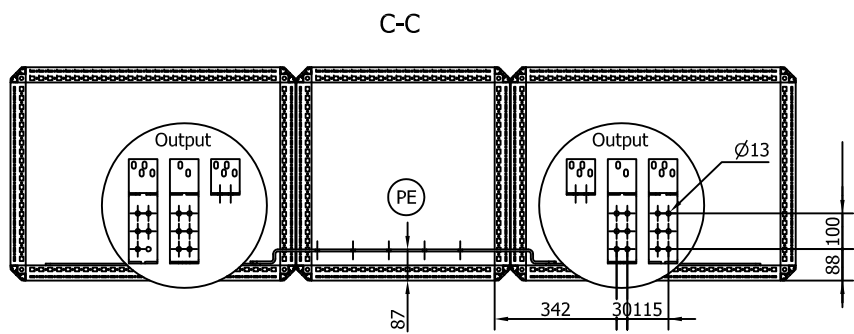
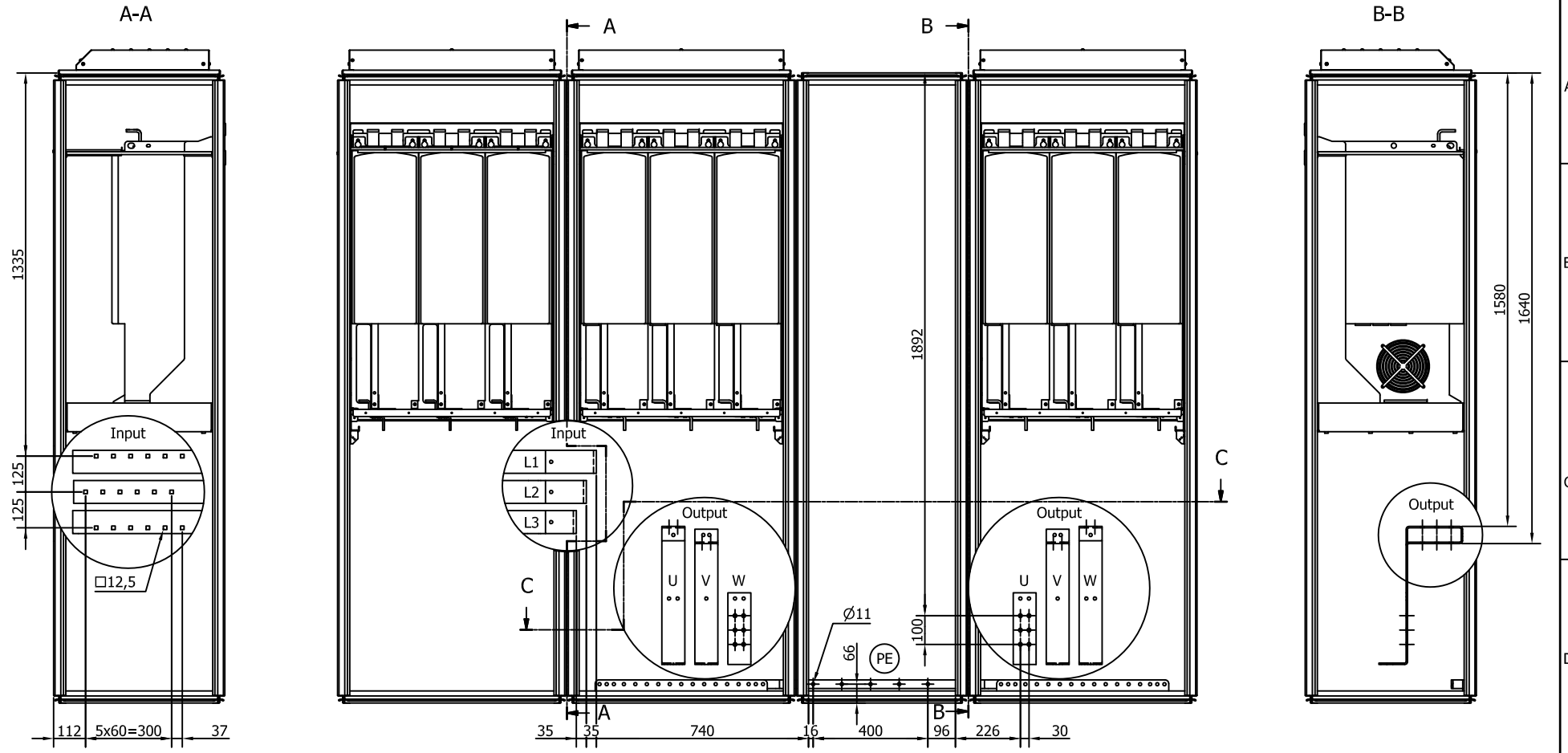


Title NXC FR14
 500V - 1770A, 2150A
 690V - 1500A, 1900A, 2250A
 Connection points

Based on	Scale 1:15/A3
Doc. no. VL25-0149-03	Revision A

Sheet 1 / 1

A) Update text fields/15.9.2011



CONNECTION POINTS	
Current (A)	Option
1500	(+ODU) +CIT/+COT



Title NXC FR14

500V - 1770A, 2150A
 690V - 1500A, 1900A, 2250A
 Connection points

Based on
 Scale 1:15/A3

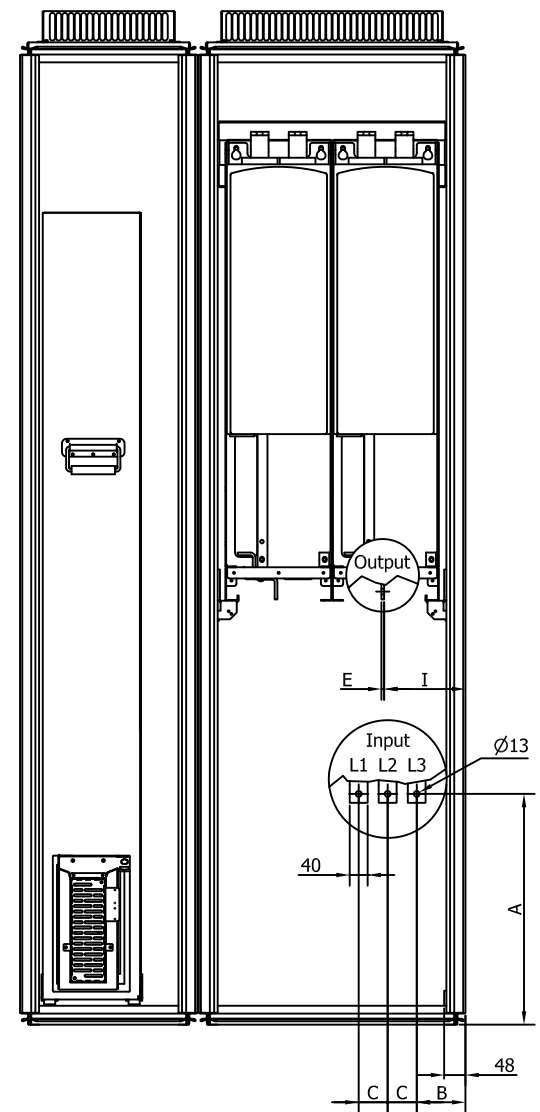
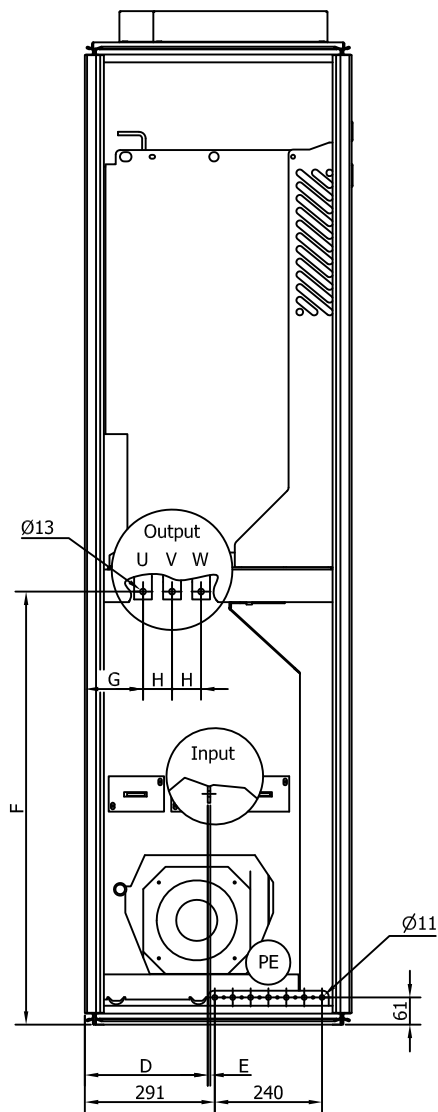
Doc. no.
 VL25-0149-04

Revision
 A



Sheet 1 / 1

A) Text field changed/15.9.2011



		CONNECTION POINTS									
Current (A)	Option	A	B	C	D	E	F	G	H	I	
261 -> 520	Basic, No options	517	109	65	275	6	970	130	65	182	
261 -> 520	+IFD +ICO	527	304	88	227	6	970	130	65	182	



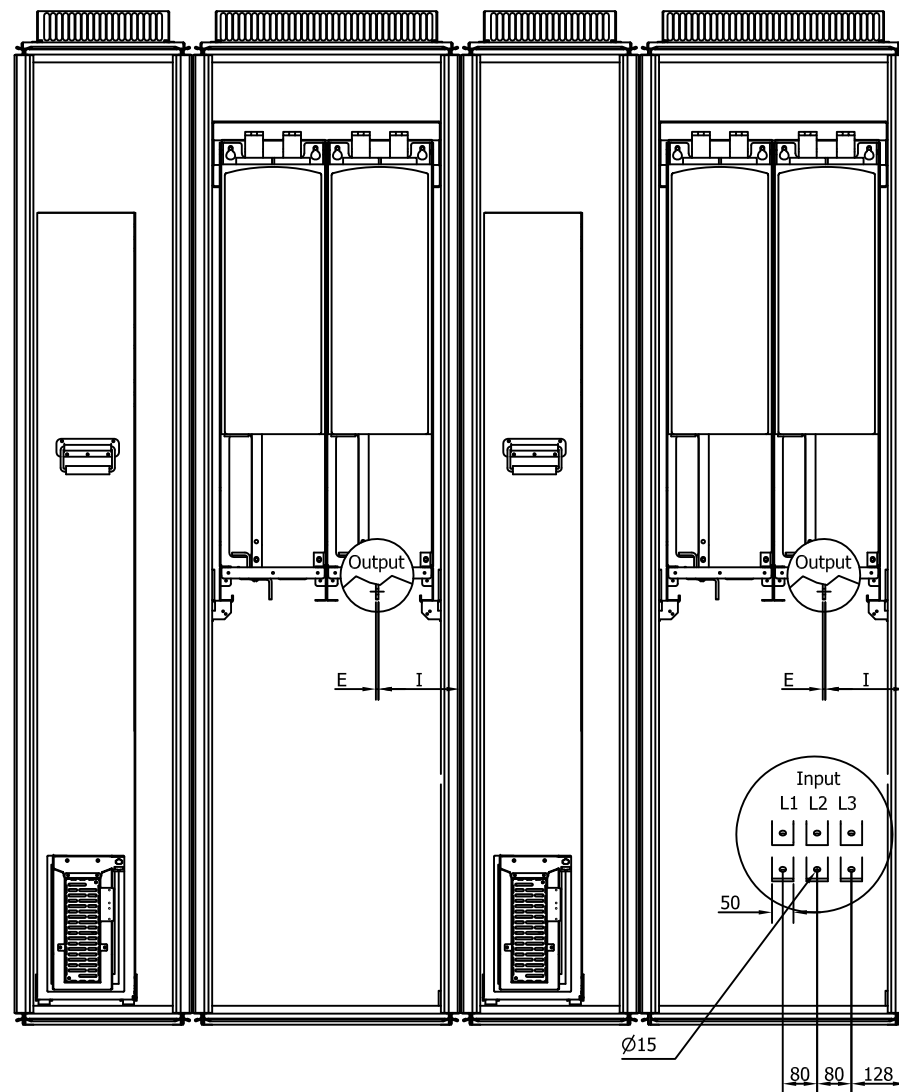
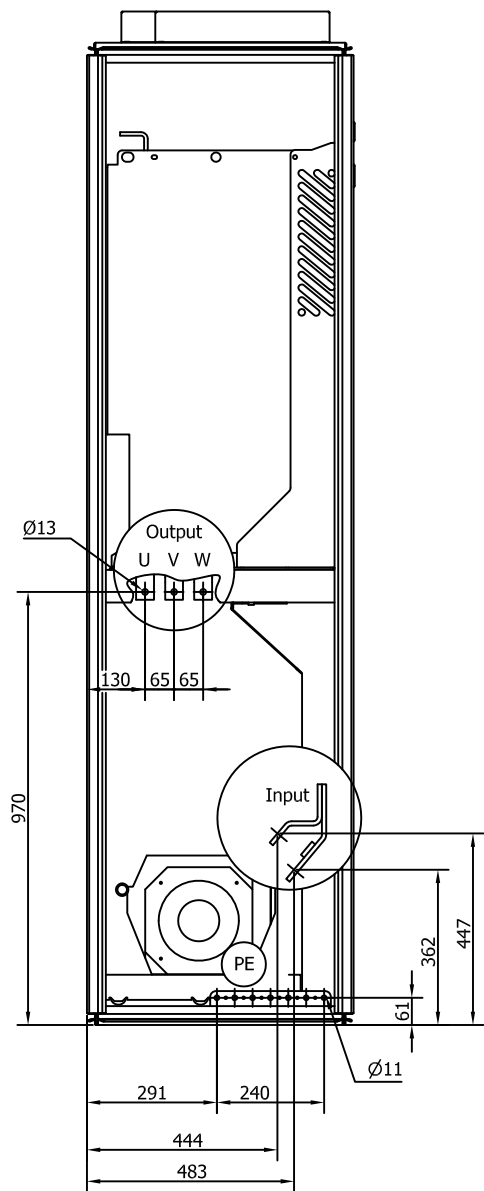
Title NXC low-harmonic drive AF10
 500V - 385A, 460A, 520A
 690V - 261A, 325A, 385A, 416A
 Connection points

Based on
 Scale 1:12/A3
 Doc. no. VL25-7109-01
 Revision A

Sheet 1 / 1

1 2 3 4 5 6 7 8

A
B
C
D
E
F



A
B
C
D
E
F



Title NXC low-harmonic drive AF12
 650-1030A/500V
 460-820A/690V
 AF12 Connection points

Based on
 Scale 0,08:1/A3

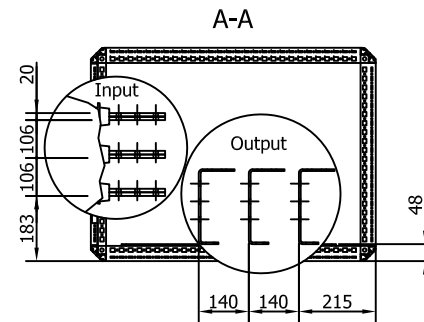
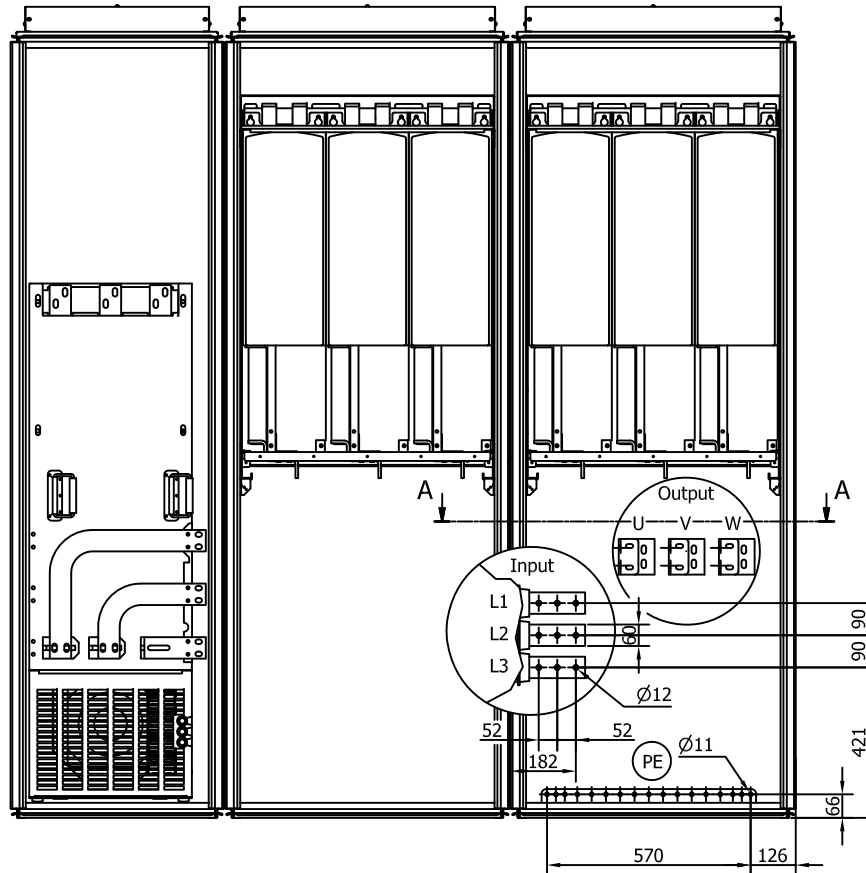
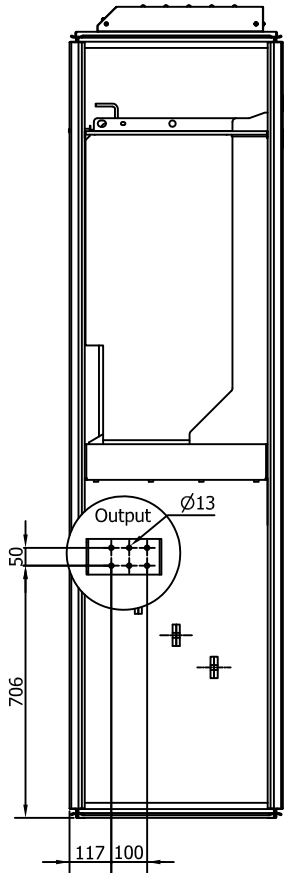
Doc. no.
 VL25-7129-01

Revision
 A



Sheet 1 / 1

A) Text fields updated/15.9.2011



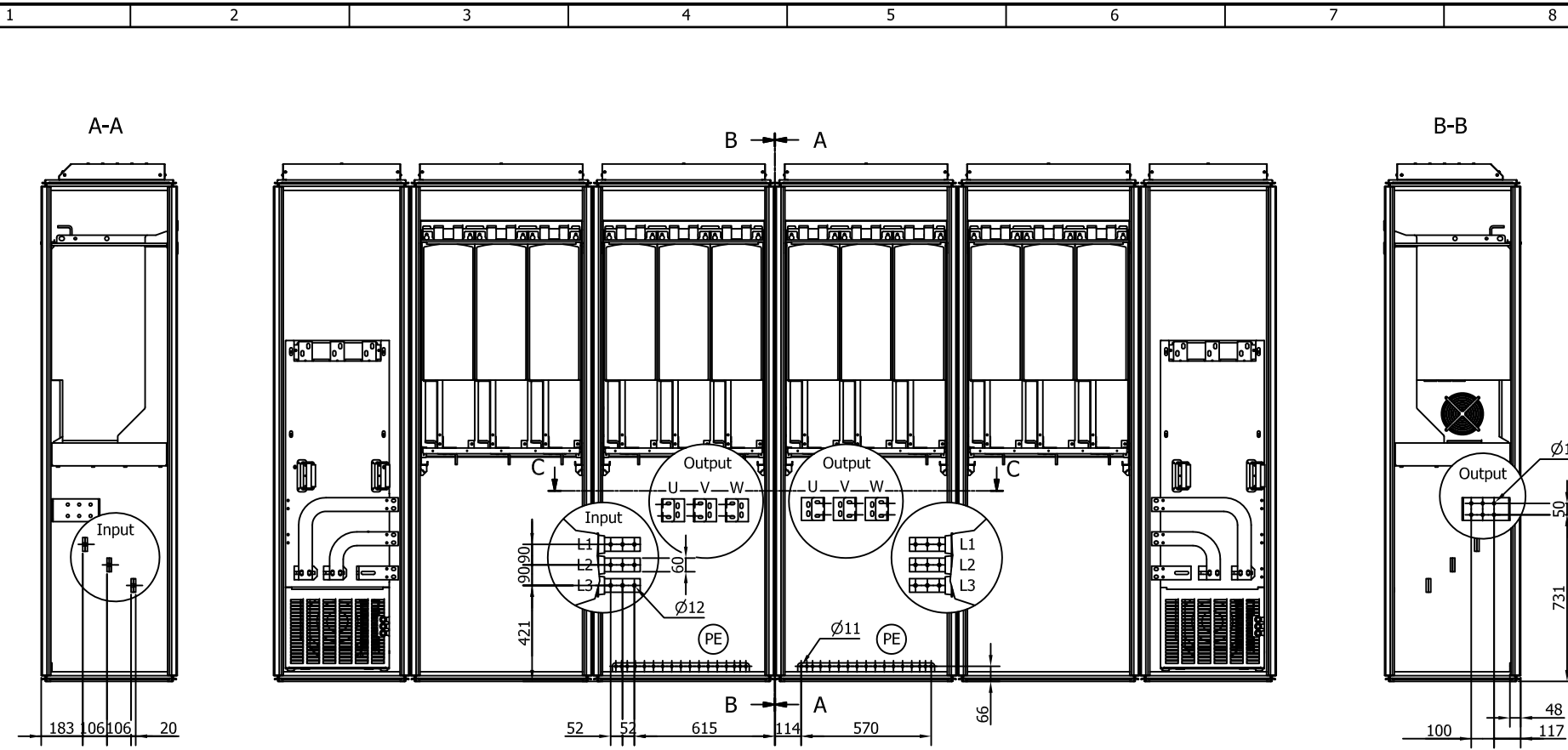
CONNECTION POINTS	
Current (A)	Option
920 -> 1450	Basic, No options



Title NXC low-harmonic drive AF13
 500V - 1150A, 1300A, 1450A
 690V - 920A, 1030A, 1180A
 Connection points

Doc. no. VL25-7139-01	Based on Scale 1:15/A3	Revision A
--------------------------	---------------------------	---------------

Sheet 1 / 1



183 106 106 20

90 90
421
52 52 615 114 570 66
Input
Output U-V-W
L1 L2 L3
Ø12
Ø11 PE

Ø13
50
731
100 48 117
Output

140 140 215 3 215 140 140

CONNECTION POINTS	
Current (A)	Option
1500 -> 2700	Basic, No options



Title NXC low-harmonic drive AF14
500V - 1770A, 2150A, 2700A
690V - 1500A, 1900A, 2250A
Connection points

Based on	Scale 1:20/A3
Doc. no. VL25-7149-01	Revision A

Sheet 1 / 1

A) Update text fields/15.9.2011