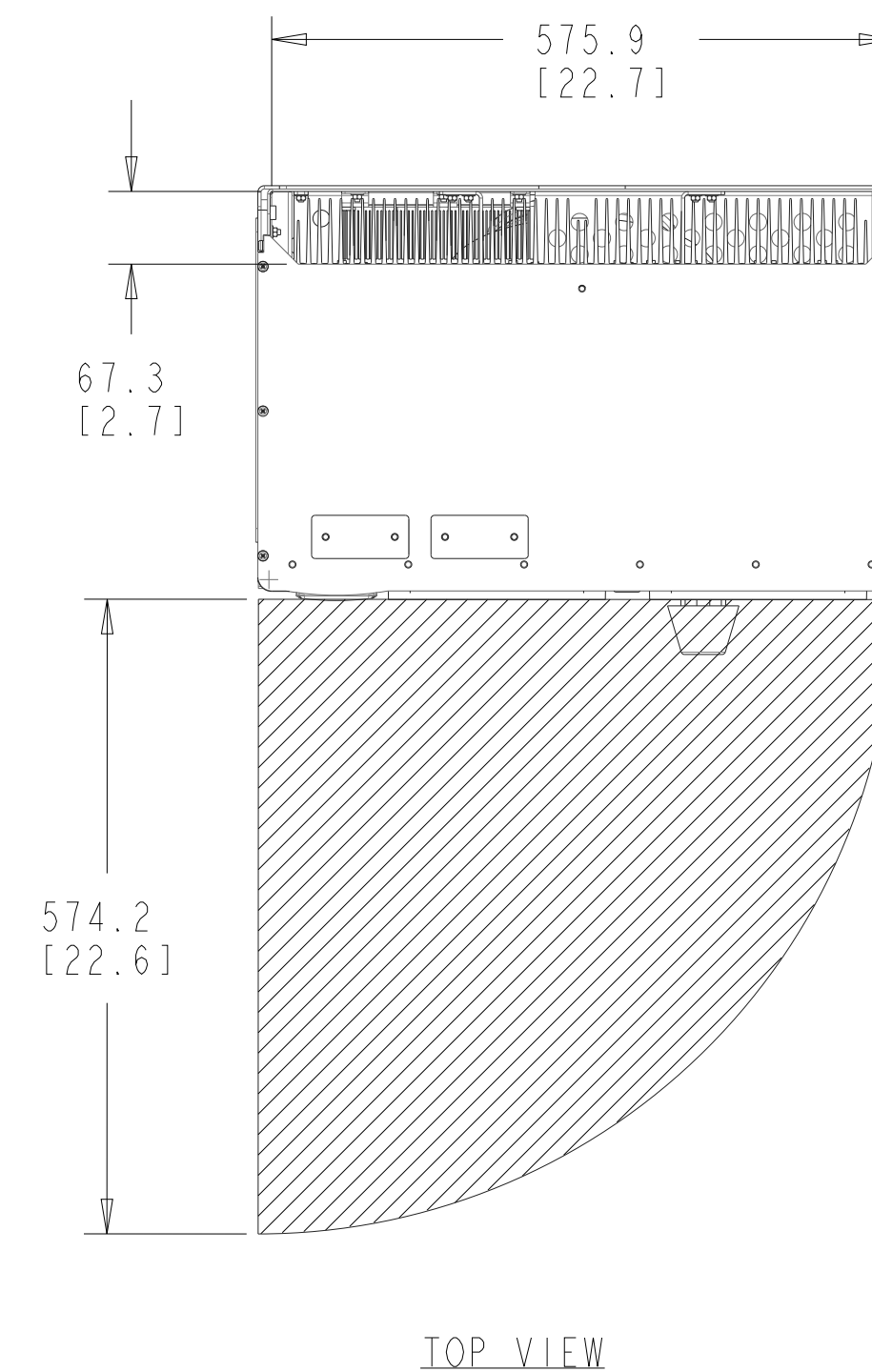
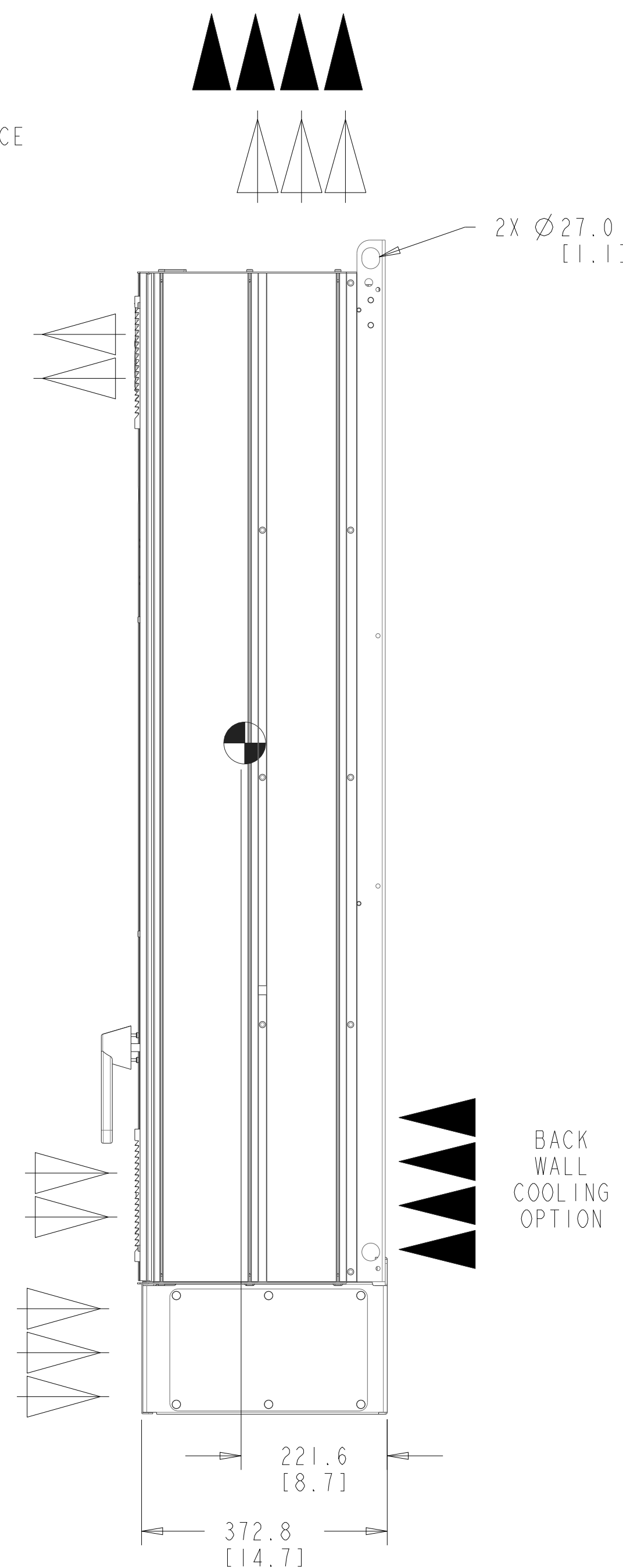
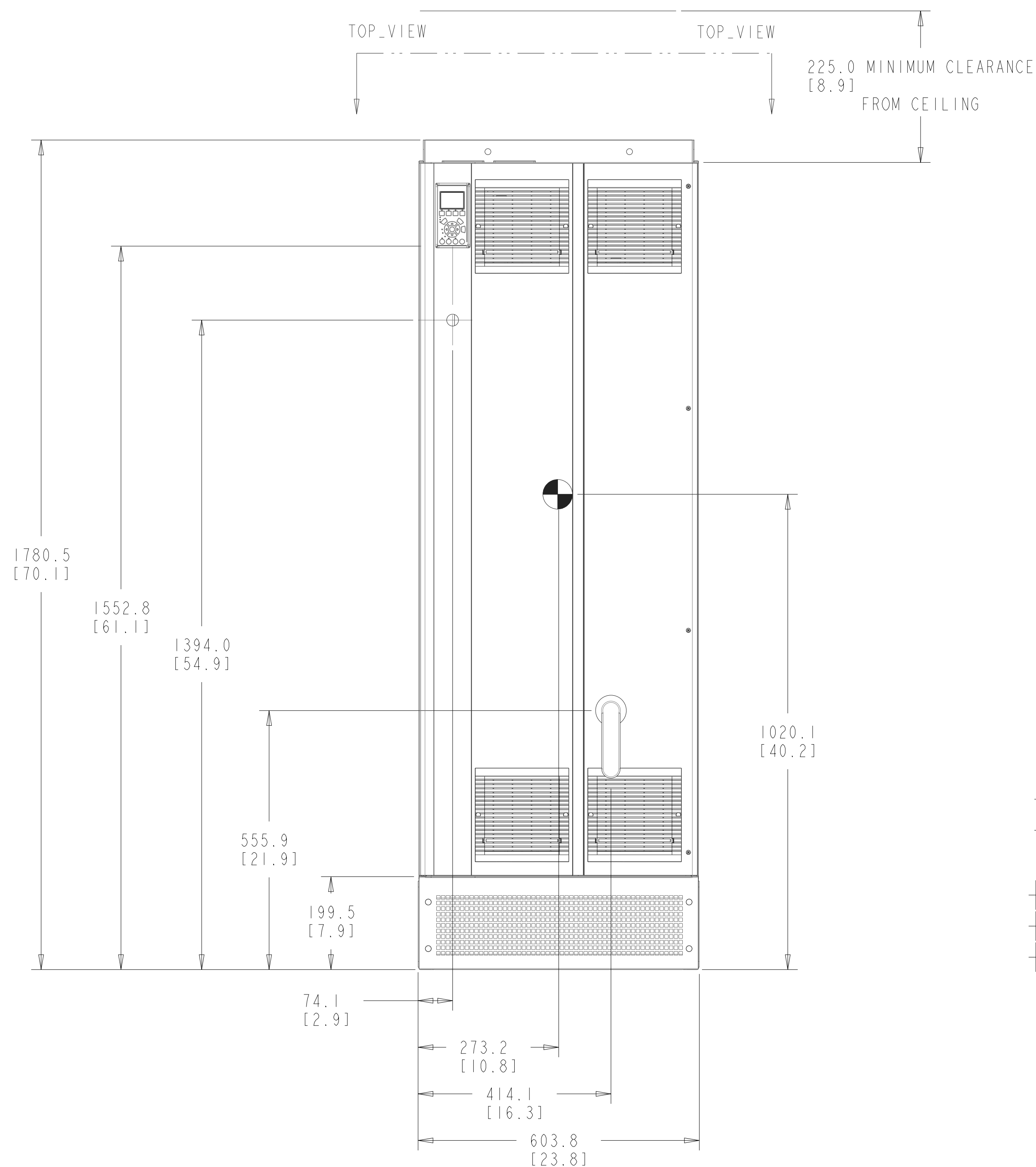


- NOTICE -
 THIS DOCUMENT CONTAINS PROPRIETARY INFORMATION OF DANFOSS DRIVES. IT IS LOANED BY DANFOSS DRIVES SUBJECT TO THE CONDITIONS THAT IT AND THE INFORMATION EMBODIED THEREIN SHALL BE USED ONLY FOR RECORD AND REFERENCE PURPOSES. SHALL NOT BE USED OR CAUSED TO BE USED IN ANY WAY PREJUDICIAL TO THE INTERESTS OF DANFOSS DRIVES. SHALL NOT BE REPRODUCED OR COPIED IN WHOLE OR IN PART OR DISCLOSED TO ANYONE WITHOUT THE DIRECT WRITTEN PERMISSION OF DANFOSS DRIVES, AND SHALL BE RETURNED UPON REQUEST.



NOTES:
 COOLING:
 1) THE ACTIVE FILTER MUST BE INSTALLED VERTICALLY WITH THE MINIMUM INDICATED FREE SPACE ABOVE THE ENCLOSURE.
 2) ALL IP21/UL TYPE NEMA 1 AND IP54/UL TYPE NEMA 12 UNITS MAY BE MOUNTED SIDE BY SIDE WITH NO MINIMUM CLEARANCE.
 3) FAILURE TO REINSTALL THE CABINET FLOOR GLAND PLATES WILL HAVE A NEGATIVE INFLUENCE ON THE INTERNAL COOLING CAPACITY OF THE UNIT AND MAY CAUSE TRIP FAULTS.
 4) STANDARD COOLING CONFIGURATION IS WITH THE INTAKE THROUGH THE BASE CABLE PLINTH AND EXHAUST OUT THE TOP OF THE ENCLOSURE. THE DOORS ARE ALSO EQUIPPED WITH FANS TO PROVIDE COOLING FOR THE CABINET.

BACK WALL COOLING:
 OPTIONAL BACK WALL COOLING CONFIGURATION IS WITH THE INTAKE THROUGH THE LOWER REAR OF THE CABINET. THE EXHAUST IS OUT THE TOP OF THE ENCLOSURE FOR THE FILTER. (CONSULT THE FACTORY WHEN PLACING UNITS NEXT TO EACH OTHER IN THIS CONFIGURATION).

WALL MOUNTING:
 THE FILTER IS NOT INTENDED TO BE WALL MOUNTED. IF THE UNIT IS SECURED TO THE WALL, THE BOTTOM OF THE UNIT MUST BE SUPPORTED BY THE FLOOR USING THE ATTACHED PLINTH OR OTHER FACTORY APPROVED MEANS.

LIFTING
 THE FILTER IS INTENDED TO BE LIFTED USING THE HOLES IN THE SIDES OF THE BACK CHANNEL.

RATING:
 IP21/ IP54 AND NEMA 1 AND NEMA 12.

| UNLESS OTHERWISE SPECIFIED INTERPRET DIM. AND TOL. PER ASME Y14.5M-1994 | | PROPERTIES | | TITLE | |
|---|------------------|-------------|------------------|---|--|
| MATERIAL | N/A | MATERIAL | N/A | 4401 N. BELL SCHOOL RD. LOVES PARK, ILLINOIS 61111 USA (815) 639-9000 FAX (815) 639-9000 | |
| FINISH | N/A | FINISH | N/A | | |
| THICKNESS | N/A | THICKNESS | N/A | | |
| EST. WEIGHT | 238 KGS/ 525 LBS | EST. WEIGHT | 238 KGS/ 525 LBS | | |
| THIRD ANGLE PROJECTION | | APPROVALS | INITIALS | DATE | INST, MTG, SERIES 6, AAF190, D FRAME |
| | | DRAWN | DAH | 03/11/11 | SIZE D SCALE 0.150 |
| | | CHECKED | | | MODEL AAF190_IP54_V1 DRAWING NO. 177R0349 |
| | | ENGR | BC | 07/18/19 | REV 003 SHEET 1 OF 4 |

8

7

6

5

4

3

2

1

D

D

C

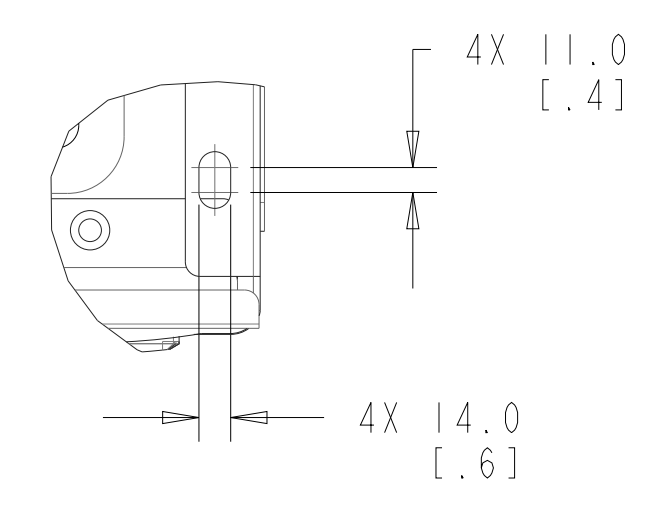
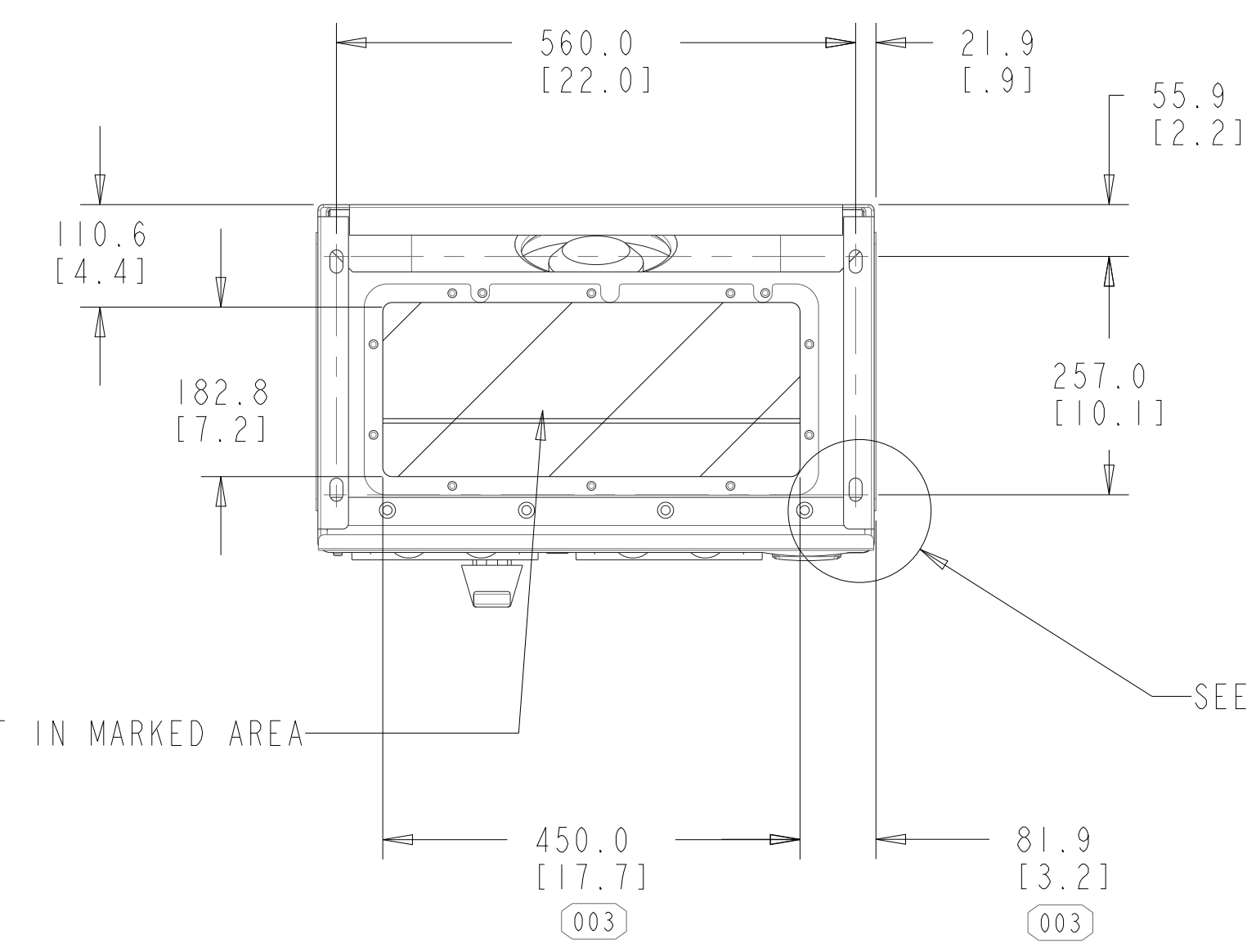
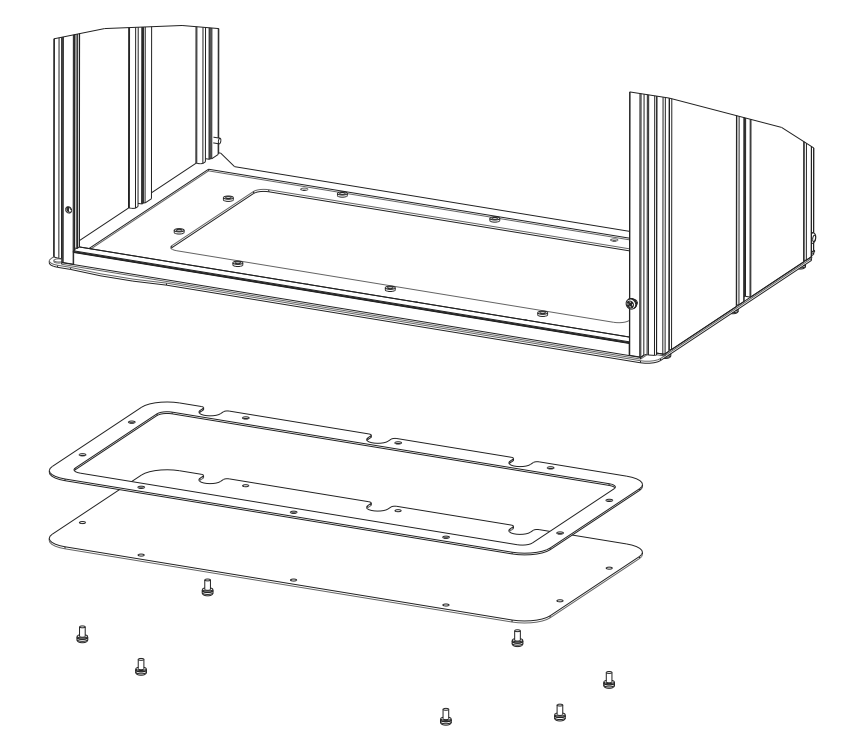
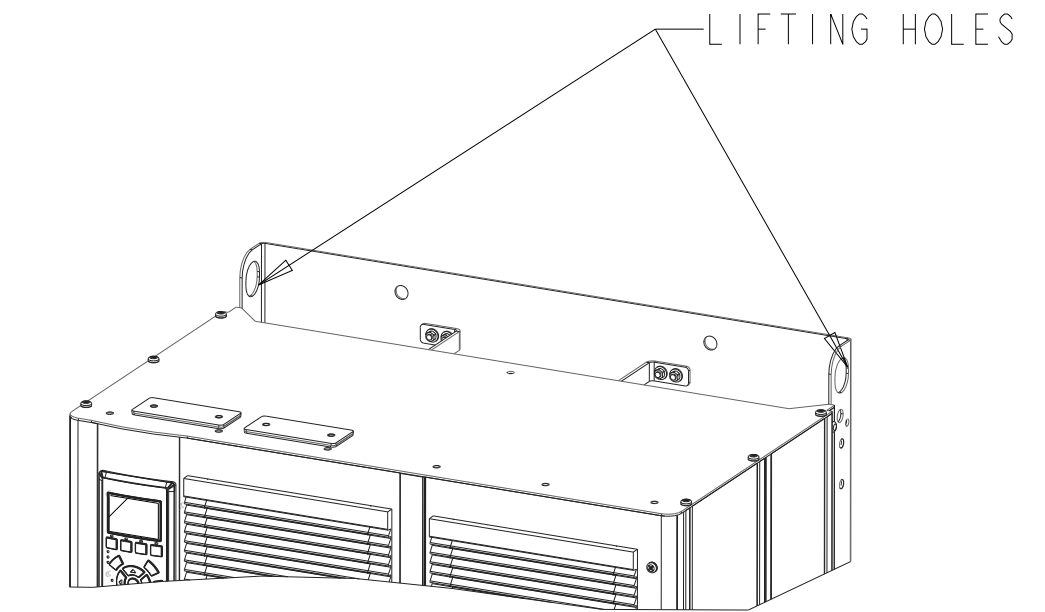
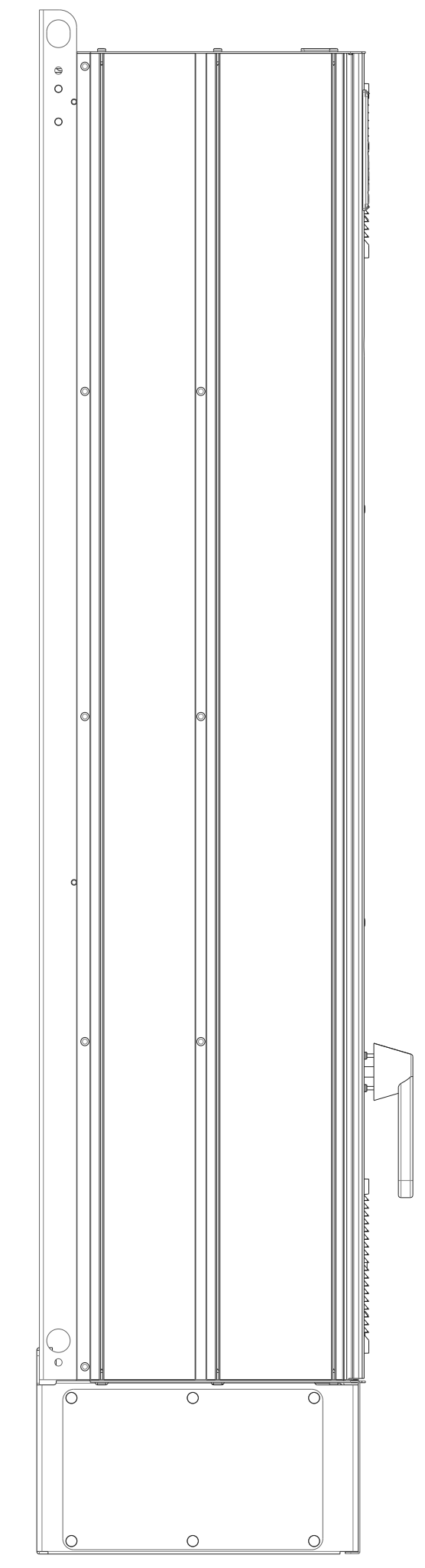
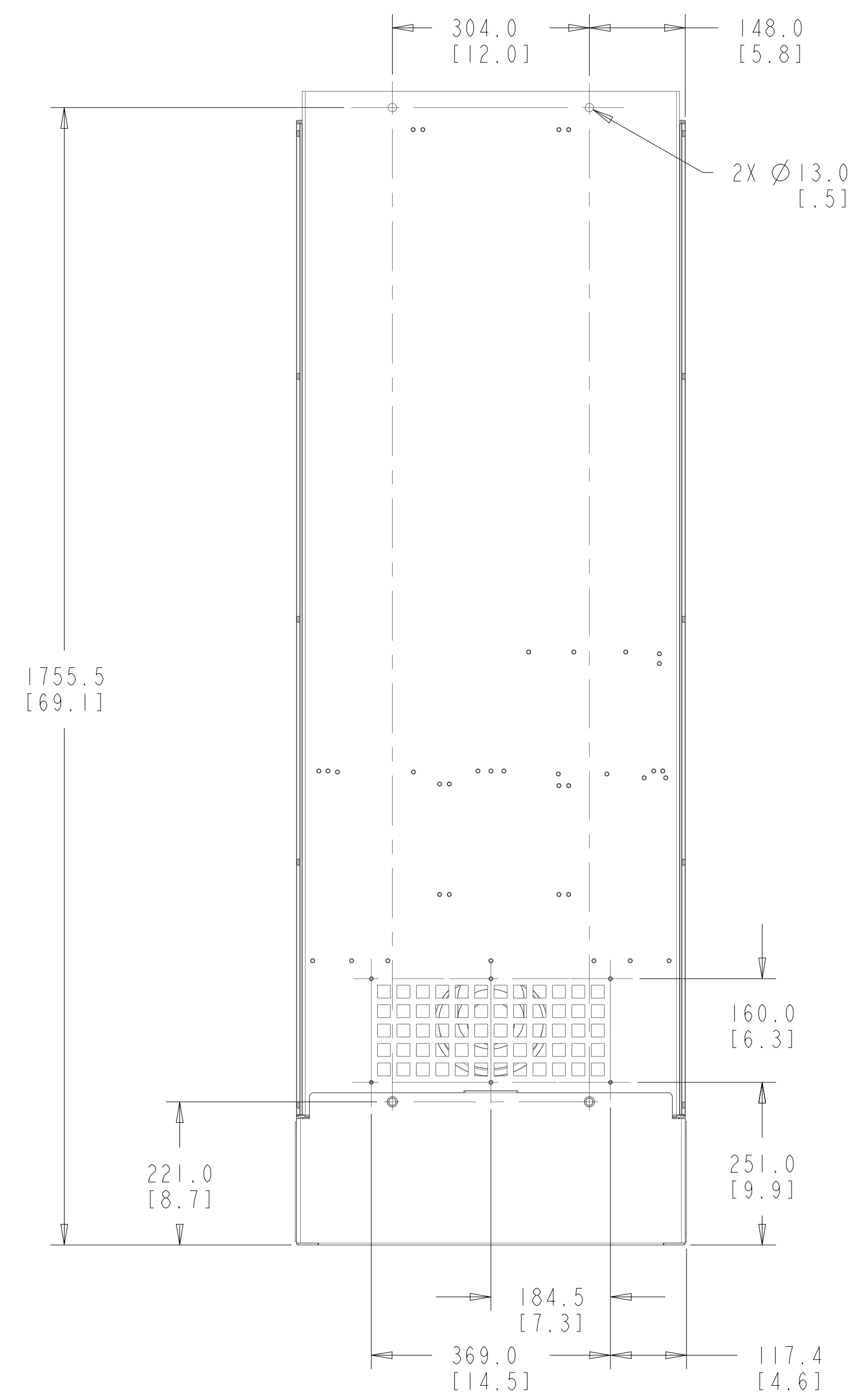
C

B

B

A

A



DETAIL A
SCALE 0.300

| TITLE | | |
|--------------------------------------|----------------------|--------------|
| INST, MTG, SERIES 6, AAF190, D FRAME | | |
| SIZE D | MODEL AAF190_IP54_V1 | REV 003 |
| SCALE 0.150 | DRAWING NO. 177R0349 | SHEET 2 OF 4 |

8

7

6

5

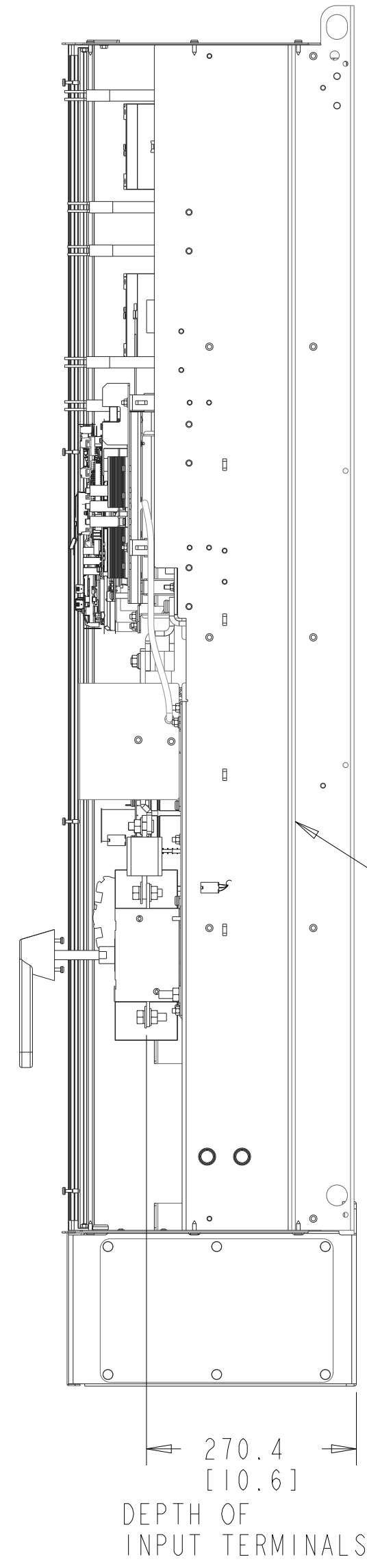
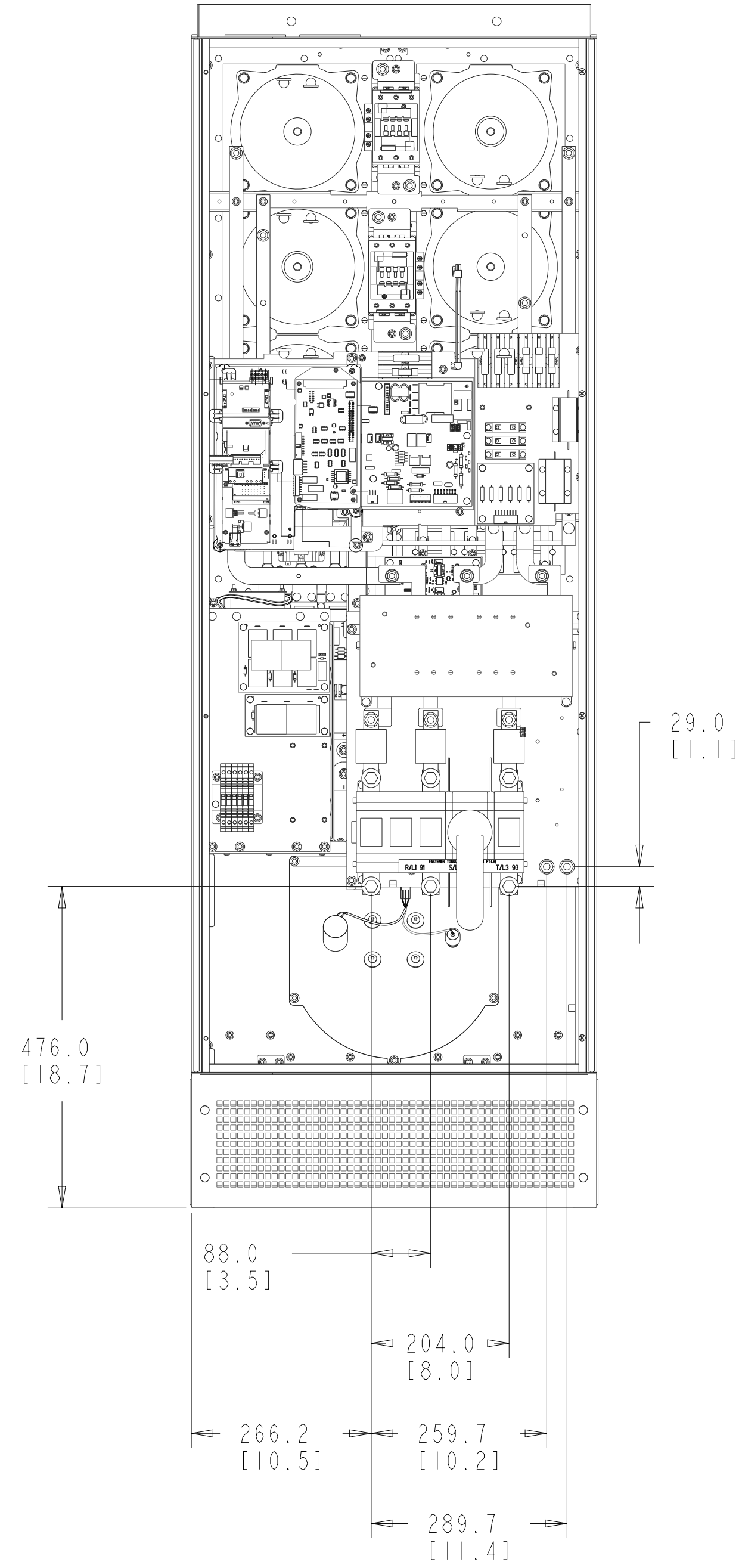
4

3

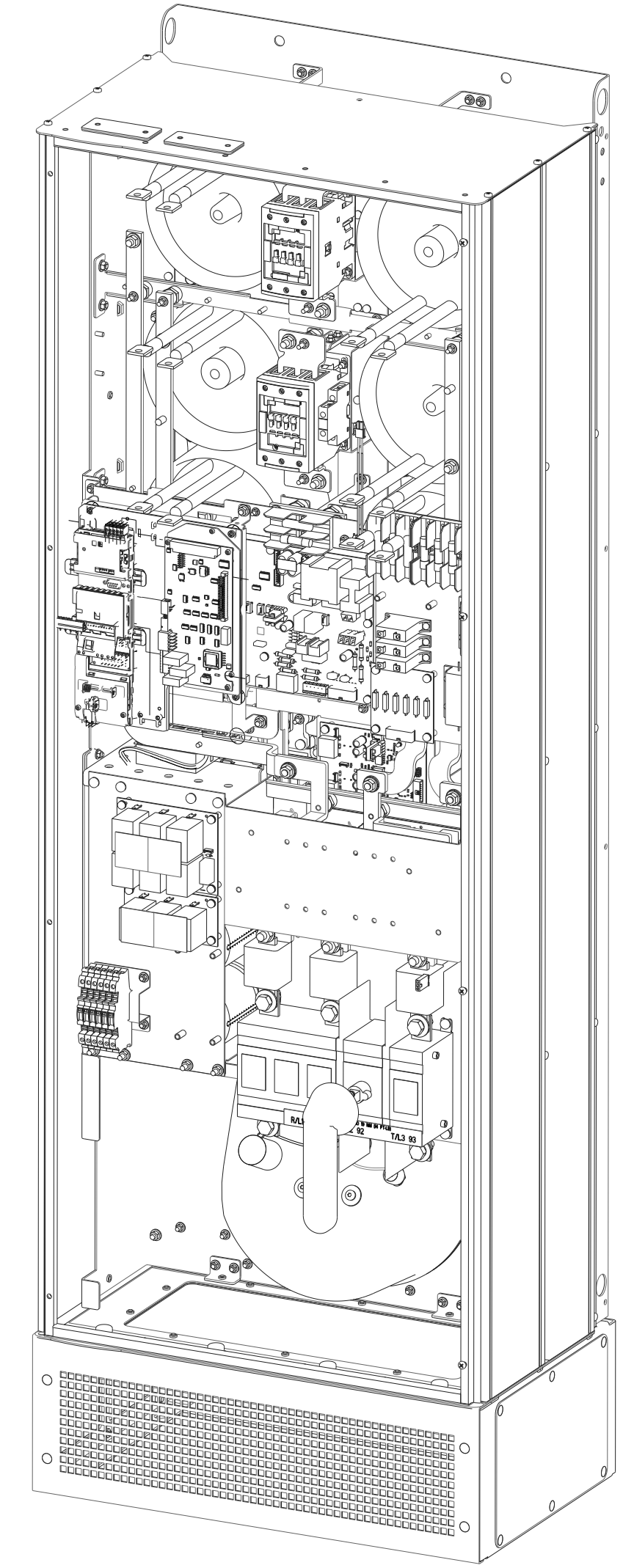
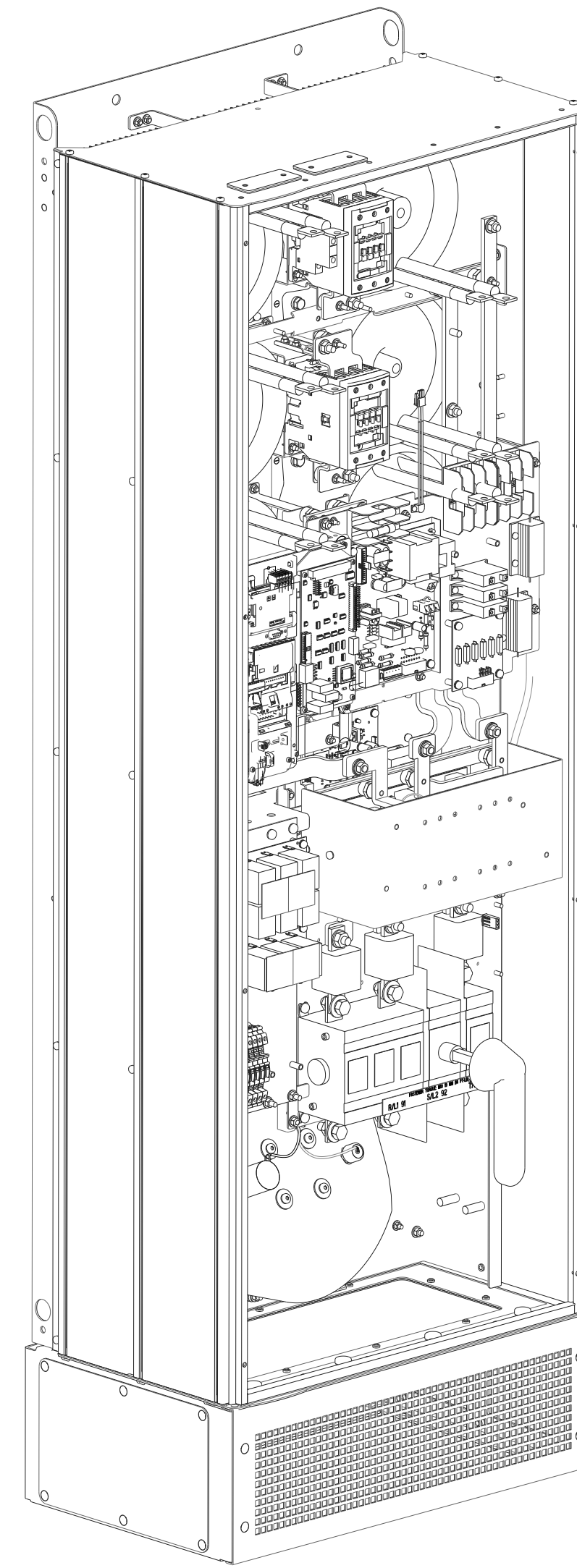
2

1

WITH DISCONNECT

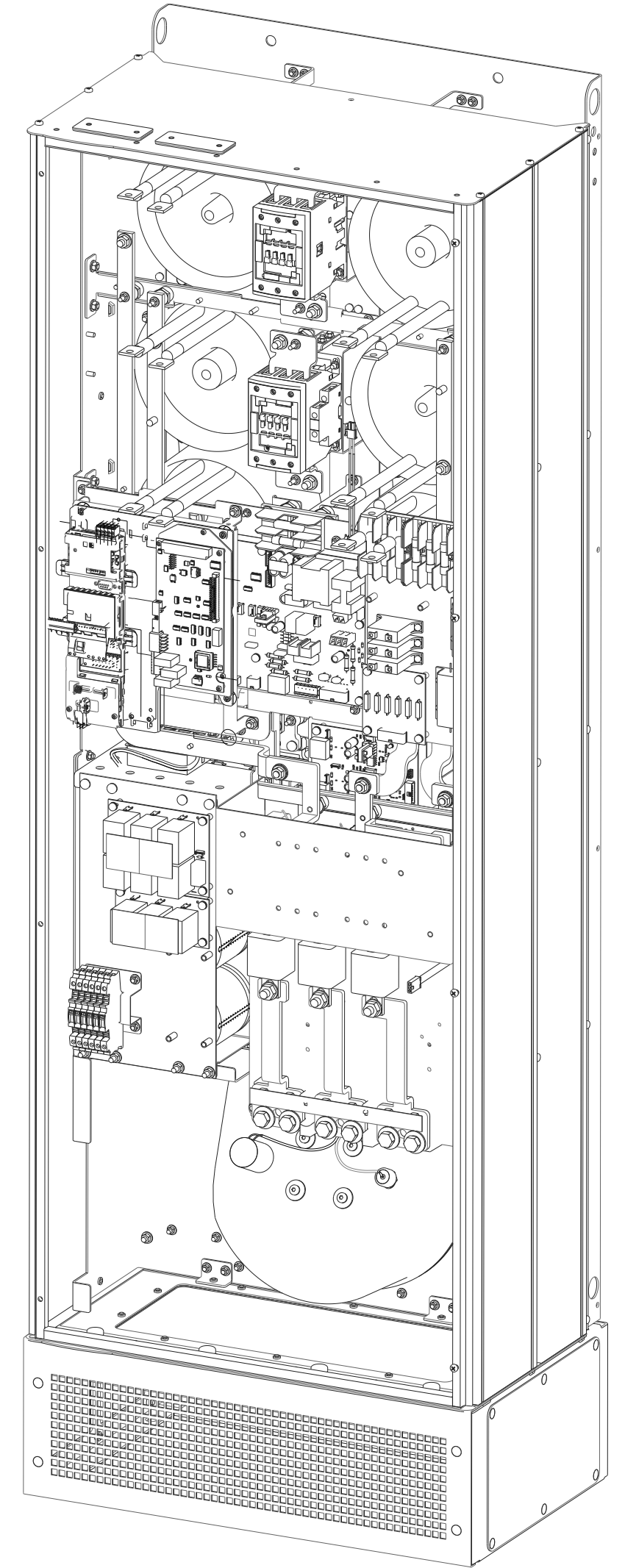
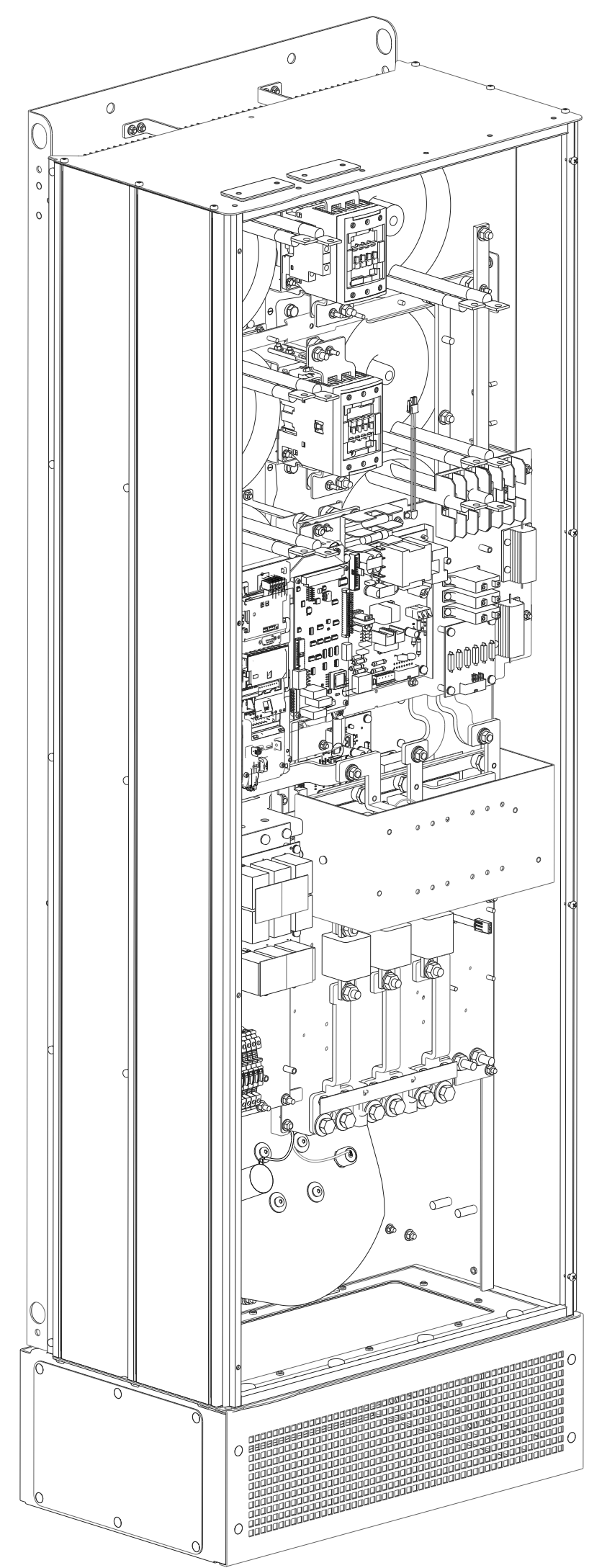
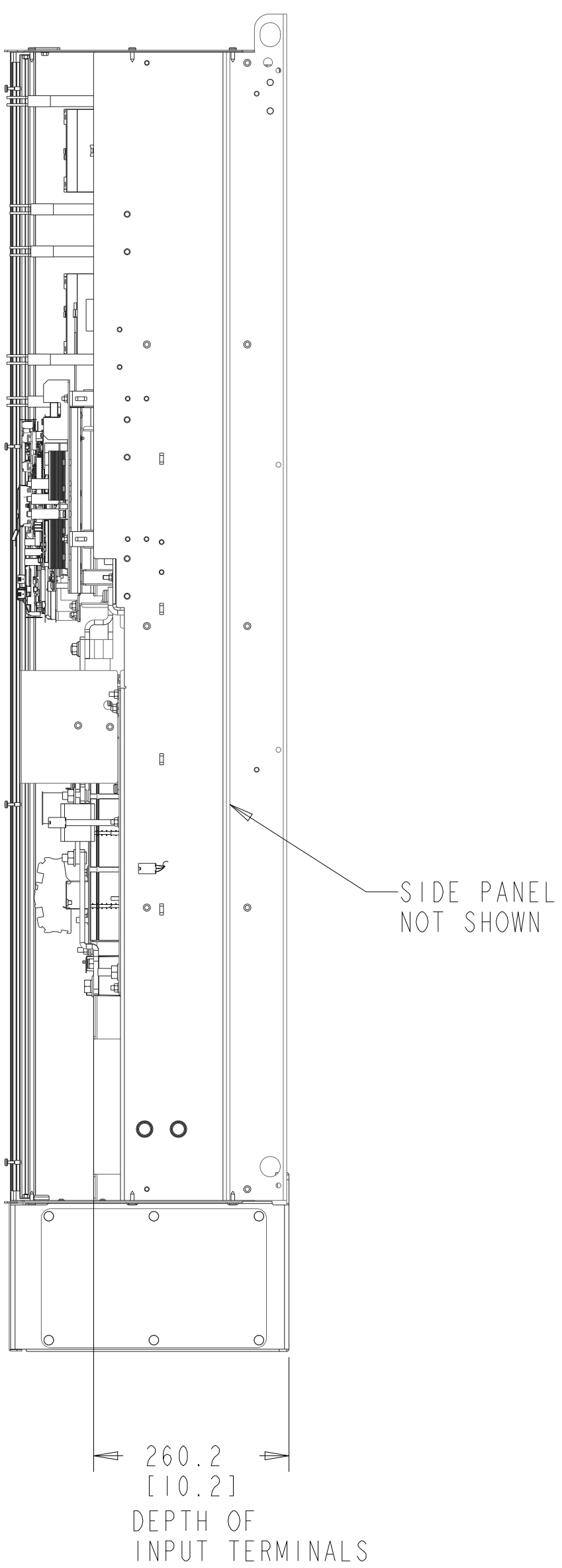
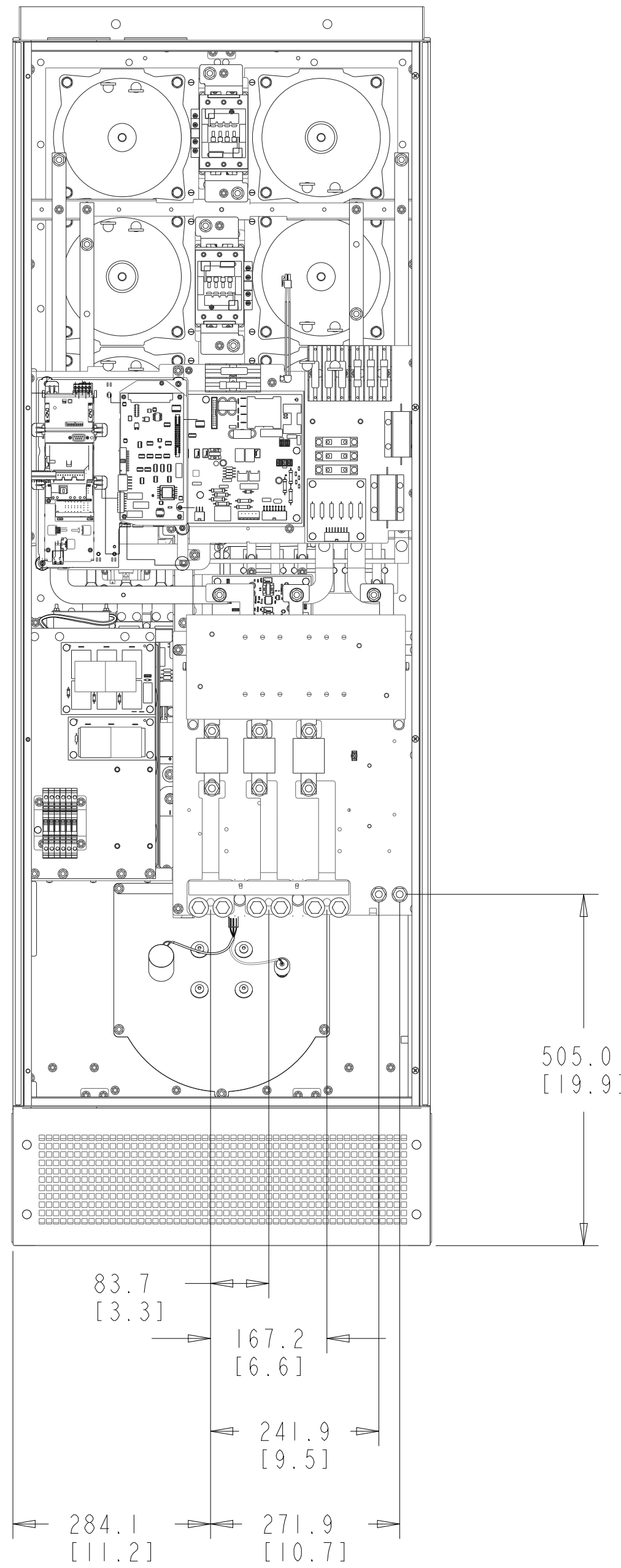


SIDE PANEL
NOT SHOWN



| TITLE | | |
|--------------------------------------|-------------------------|-----------------|
| INST, MTG, SERIES 6, AAF190, D FRAME | | |
| SIZE D | MODEL AAF190-1P54-V1 | REV 003 |
| SCALE 0.150 | DRAWING NO. 177R0349 | SHEET 3 OF 4 |

WITHOUT DISCONNECT



| | | |
|--------------------------------------|----------------|--------|
| TITLE | | |
| INST, MTG, SERIES 6, AAF190, D FRAME | | |
| SIZE | MODEL | REV |
| D | AAF190_IP54_V1 | 003 |
| SCALE | DRAWING NO. | SHEET |
| 0.150 | 177R0349 | 4 OF 4 |