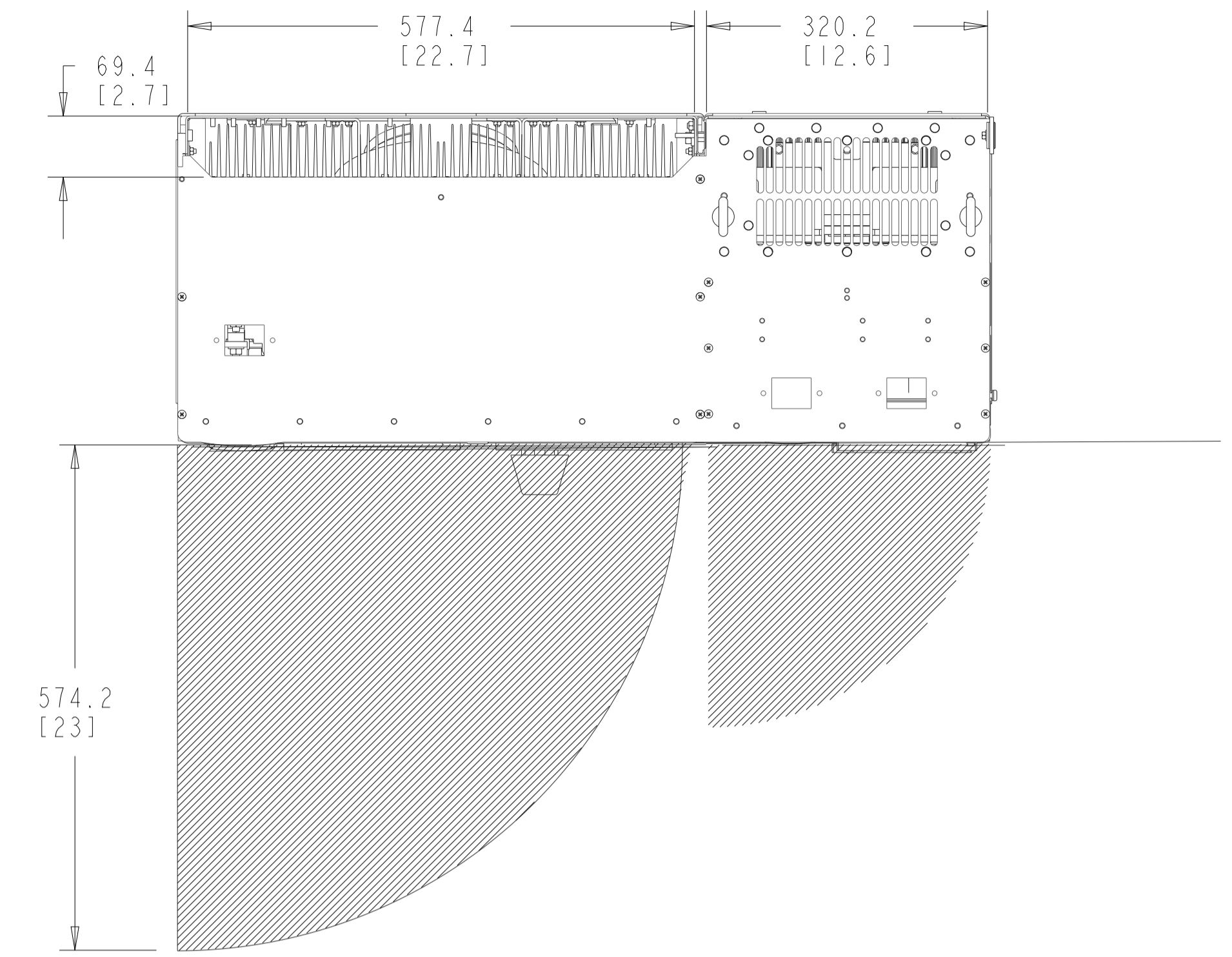
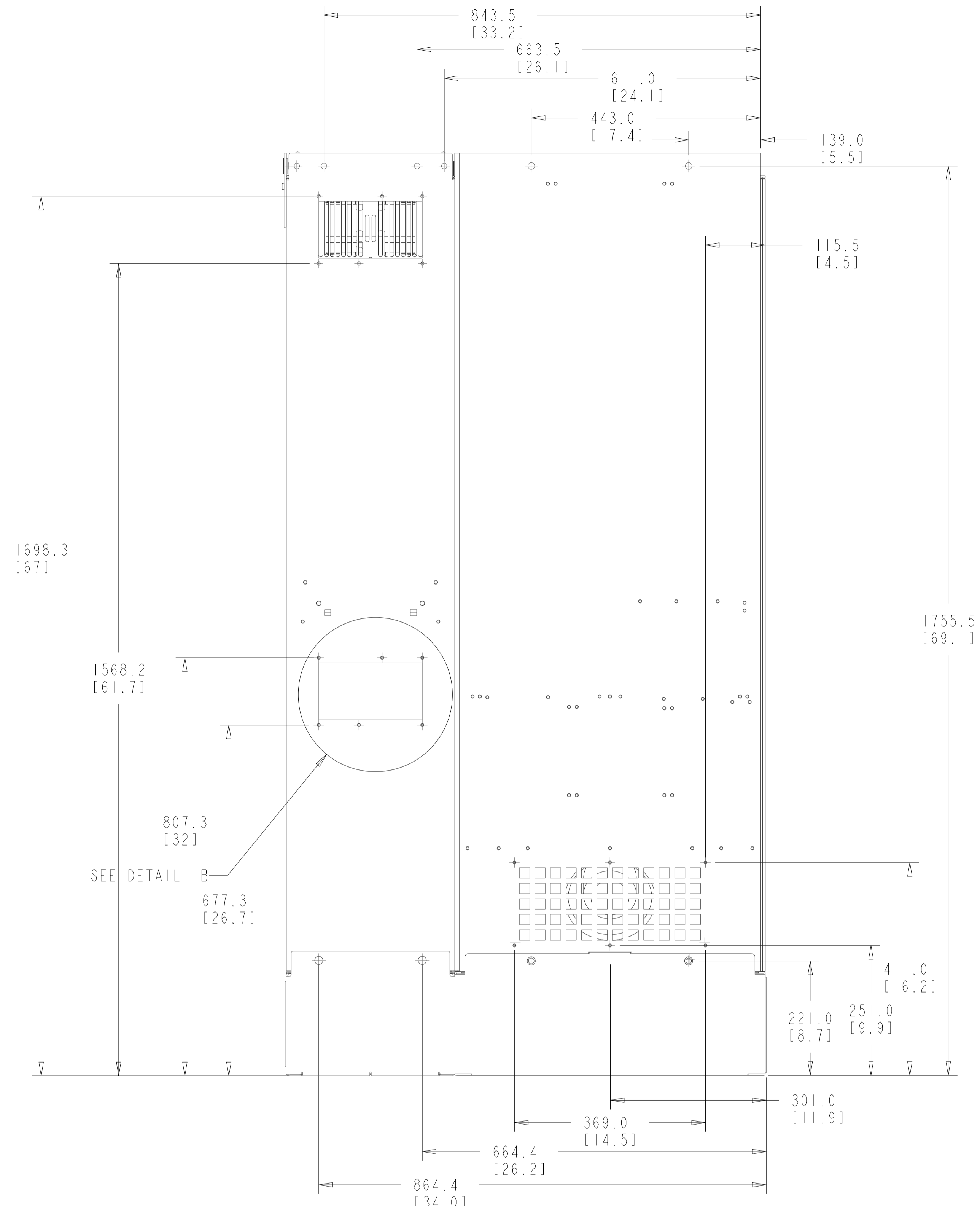


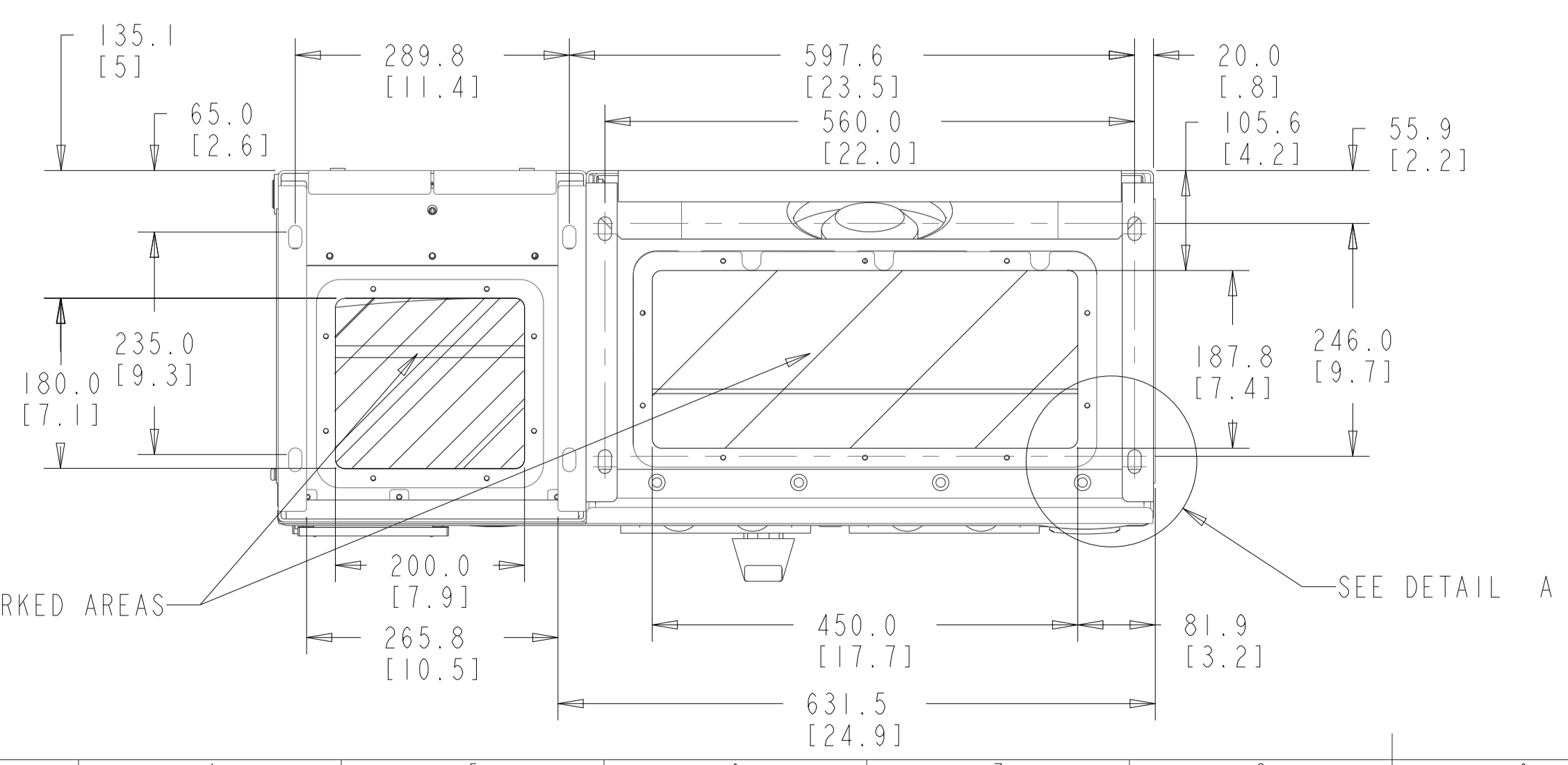
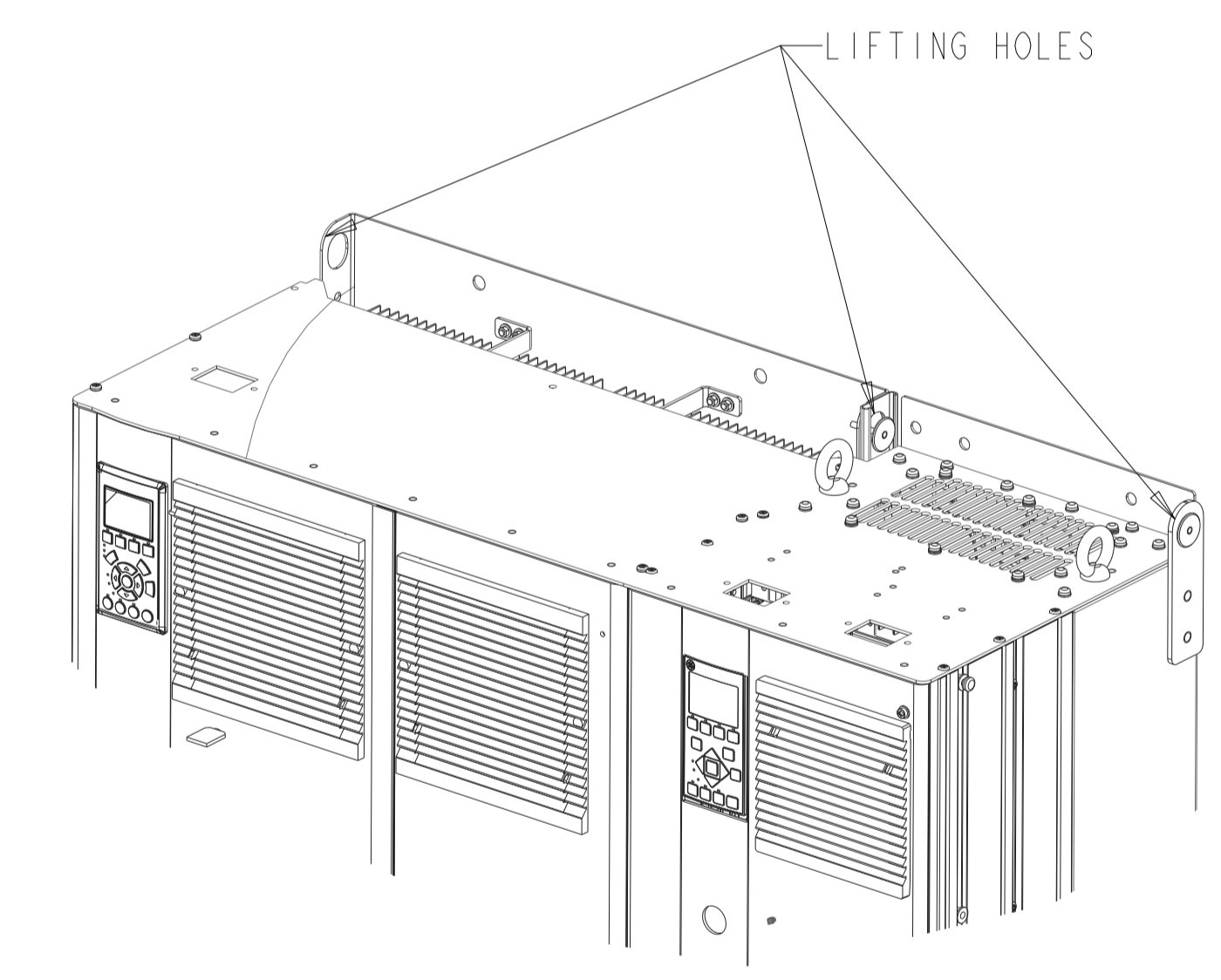
NOTE:
THIS INSTALLATION DRAWING IS APPLICABLE FOR FC102/202 160KW
AND FOR FC302 132KW OF LOW HARMONIC DRIVE.

◻ CRITICAL CHARACTERISTICS
 ▽ KEY CHARACTERISTICS
 ○ INSPECTION
 MUST COMPLY TO ROHS DIRECTIVE 2011/65/EU

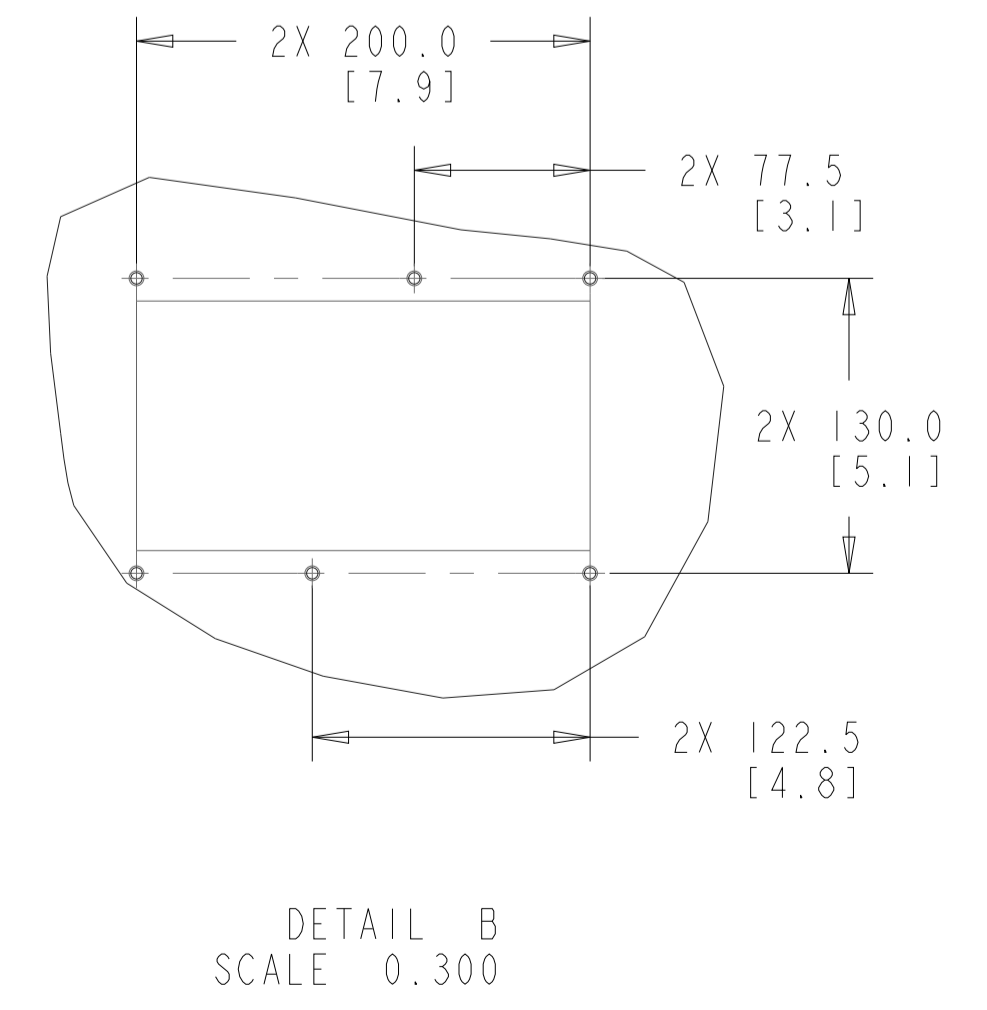
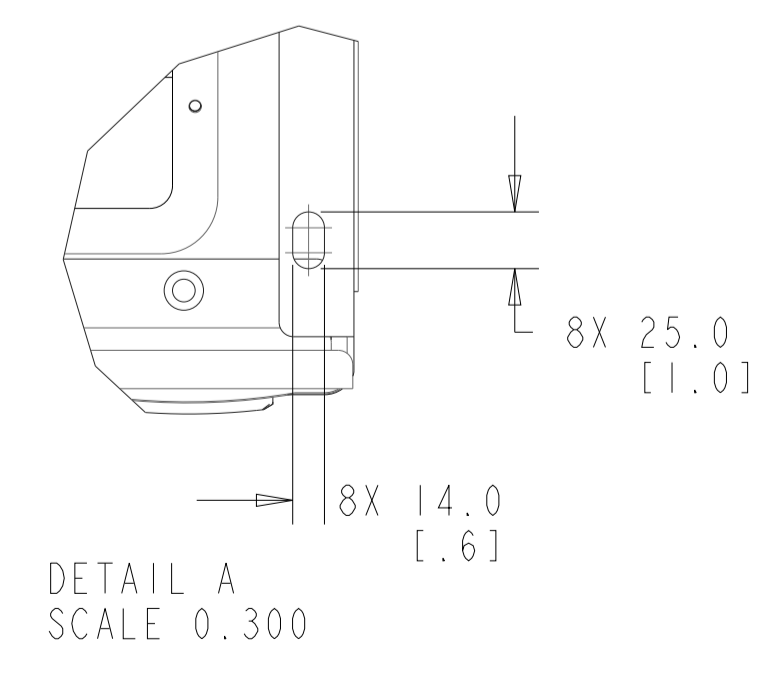
UNLESS OTHERWISE SPECIFIED INTERPRET DIM. & TOL. PER ASME Y14.5M-1994 ALL DIMENSIONS ARE IN MILLIMETERS ±1.0 ±0.50 ±1.0		THIRD ANGLE PROJECTION	SCALE 0.180	SIZE A1	MATERIAL
PM CONTROLLED DRAWING NOT VALID WITHOUT FROZEN DATE IN ID STAMP				FINISH	
CHANGED	BC			10/21/16	DESCRIPTION
DESIGNED	SK	10/30/14	INST.MTG.SERIES6.LHD20.D1.FRAME		
CHECKED					
CONFIDENTIAL - PROPERTY OF DANFOSS A/S NORBORG, DENMARK. NOT TO BE HANDED OVER TO BE COPIED OR BE USED BY A THIRD PARTY. TWO OR THREE DIMENSIONAL REPRODUCTION OF CONTENTS TO BE AUTHORIZED BY DANFOSS A/S.			DRAWING NUMBER 177R0620	REV 002	
			WORK LHD-ASST-D1M	SHEET 1 OF 4	



TOP VIEW

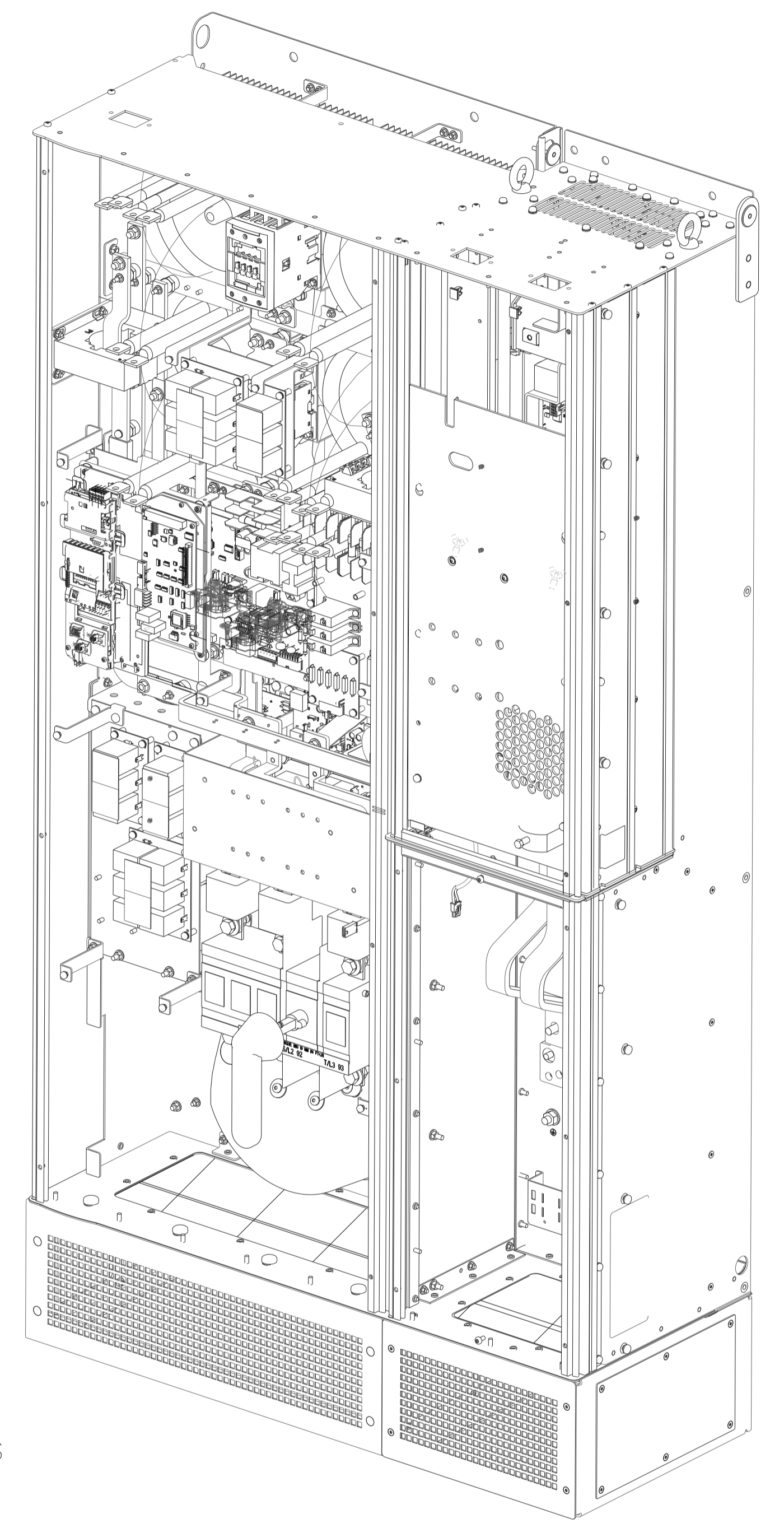
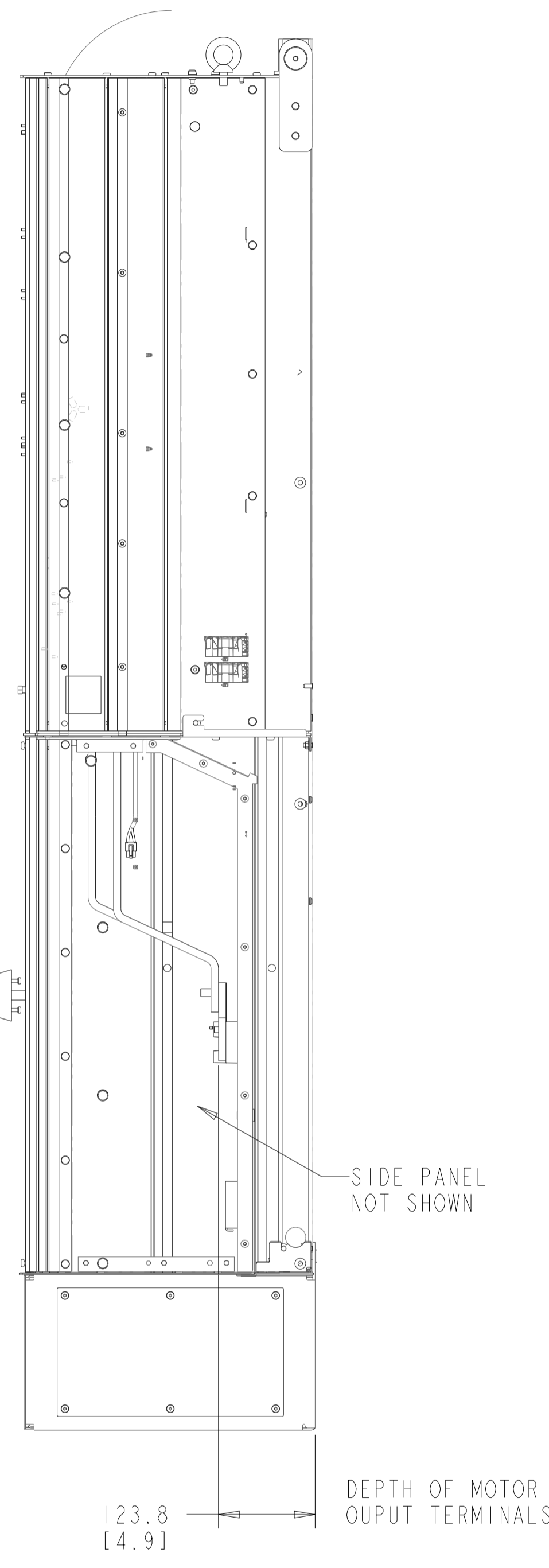
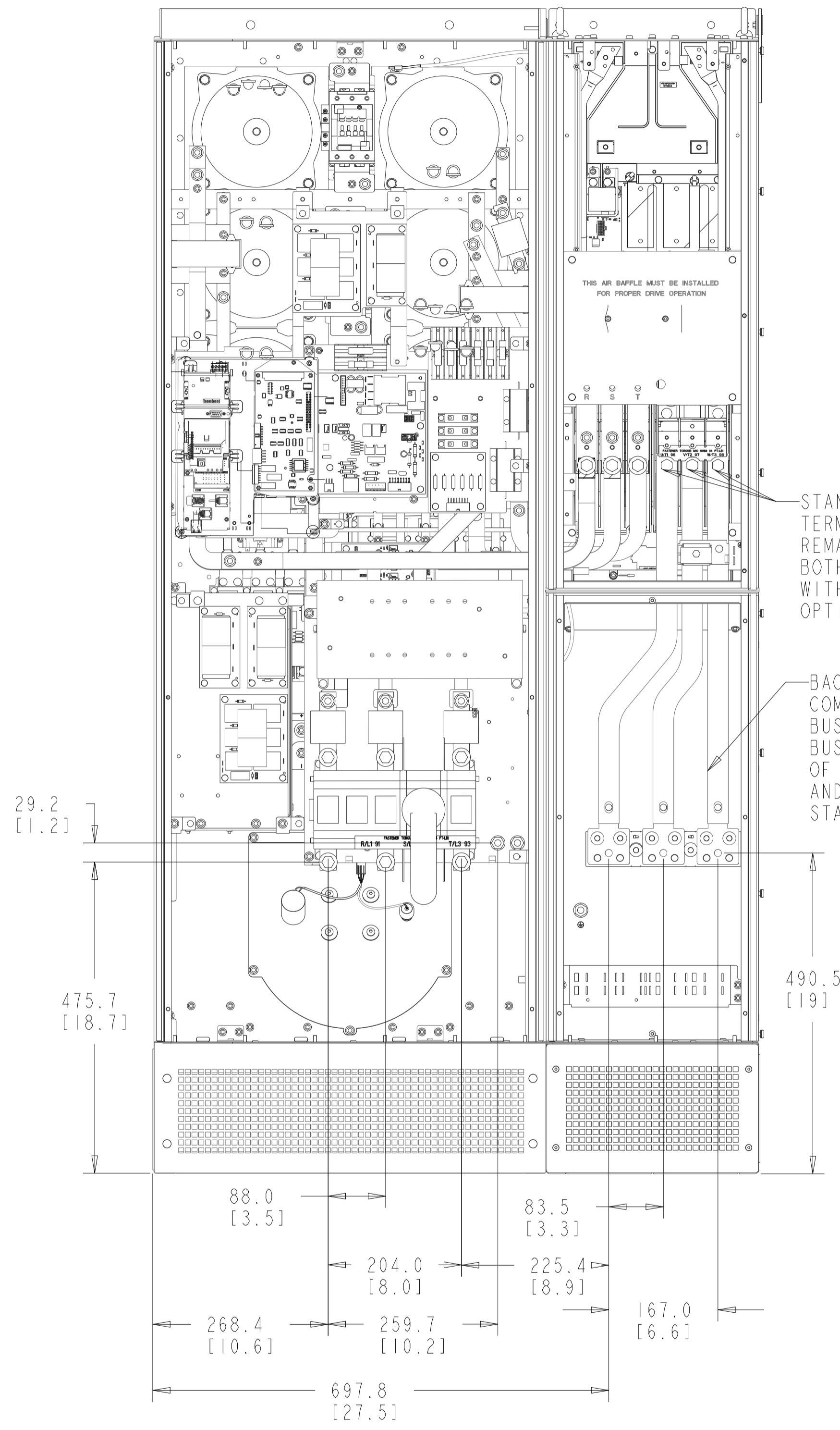
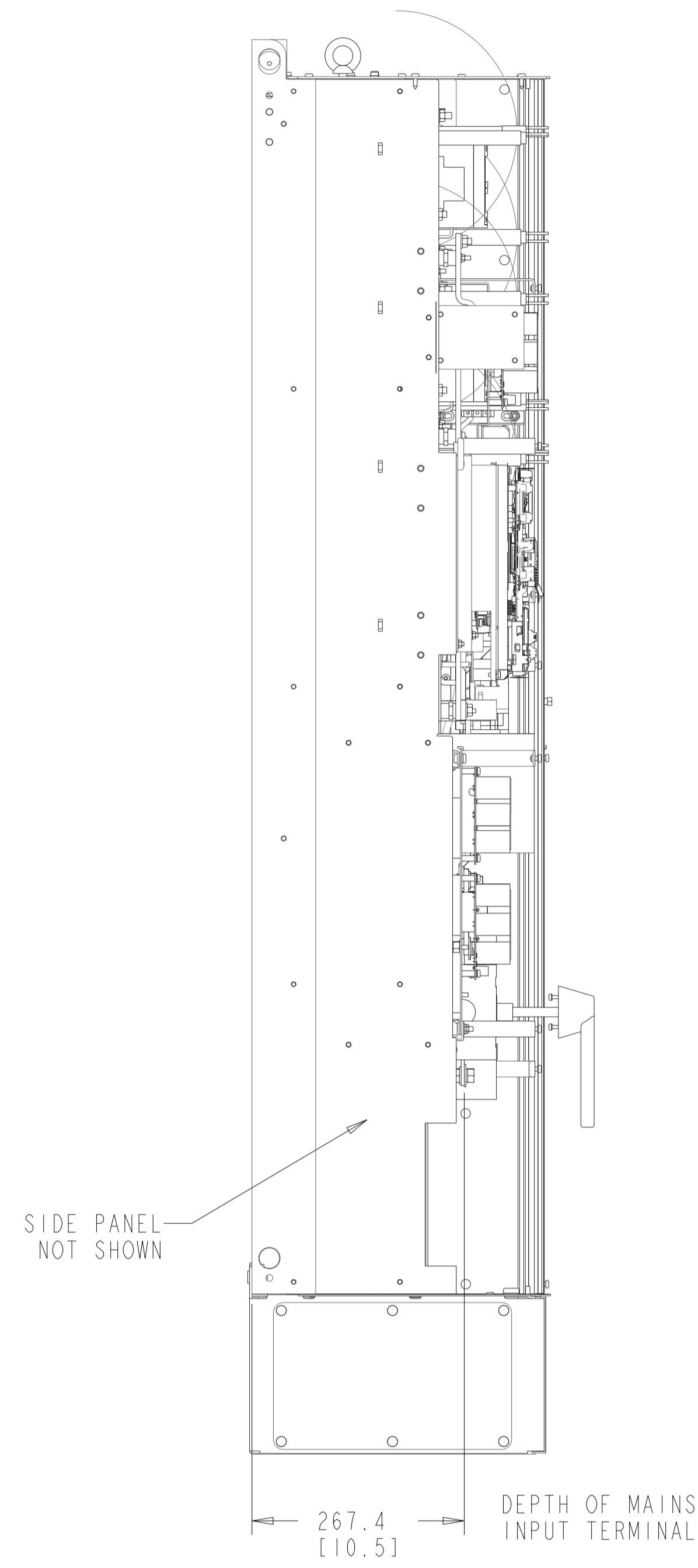


PLACE CONDUIT IN MARKED AREAS

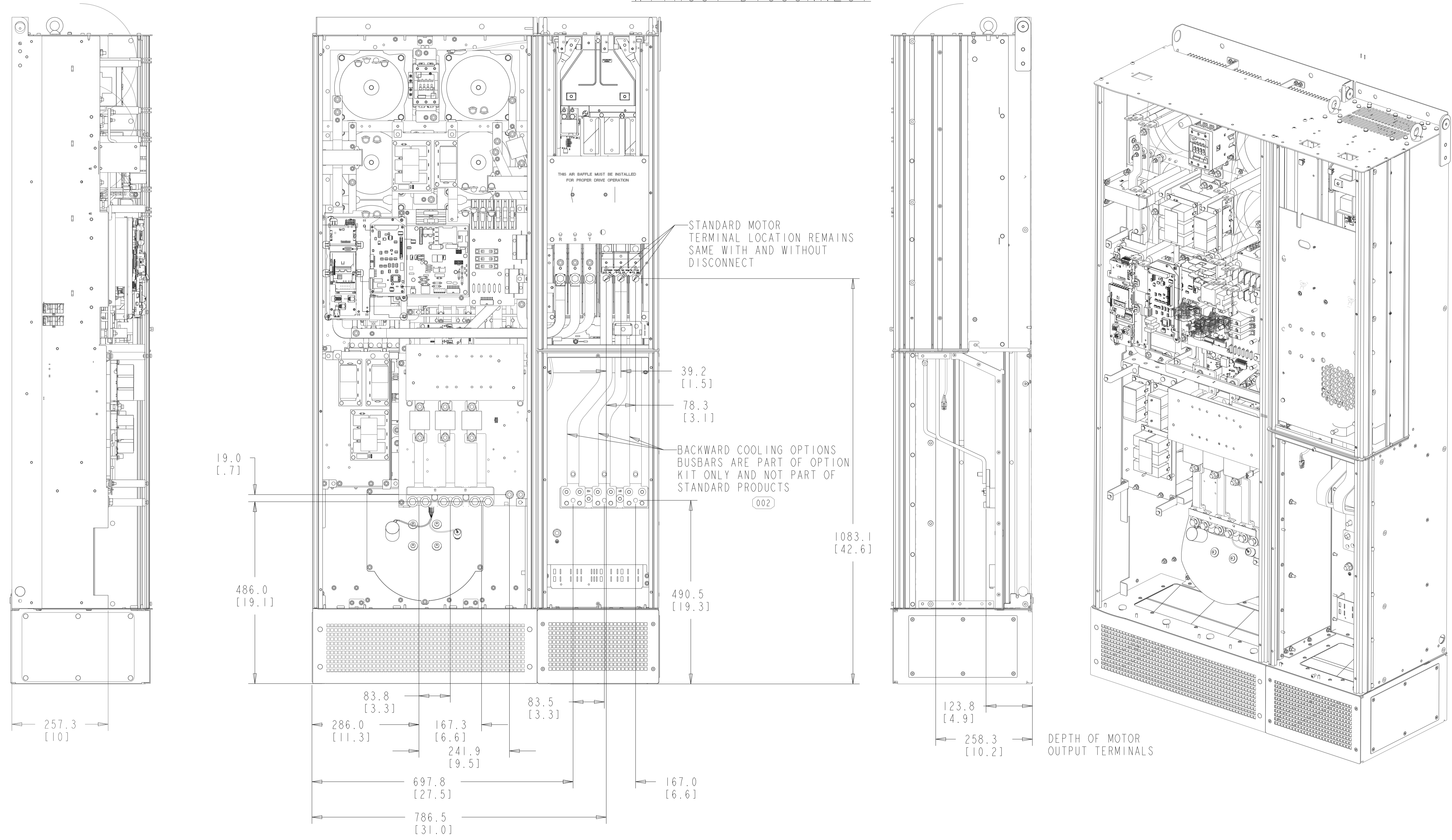


DATE	1770620	REV	002
DRAWN	LHD-ASST-DIN	SHEET	2 OF 4

WITH DISCONNECT



WITHOUT DISCONNECT



NOTES:

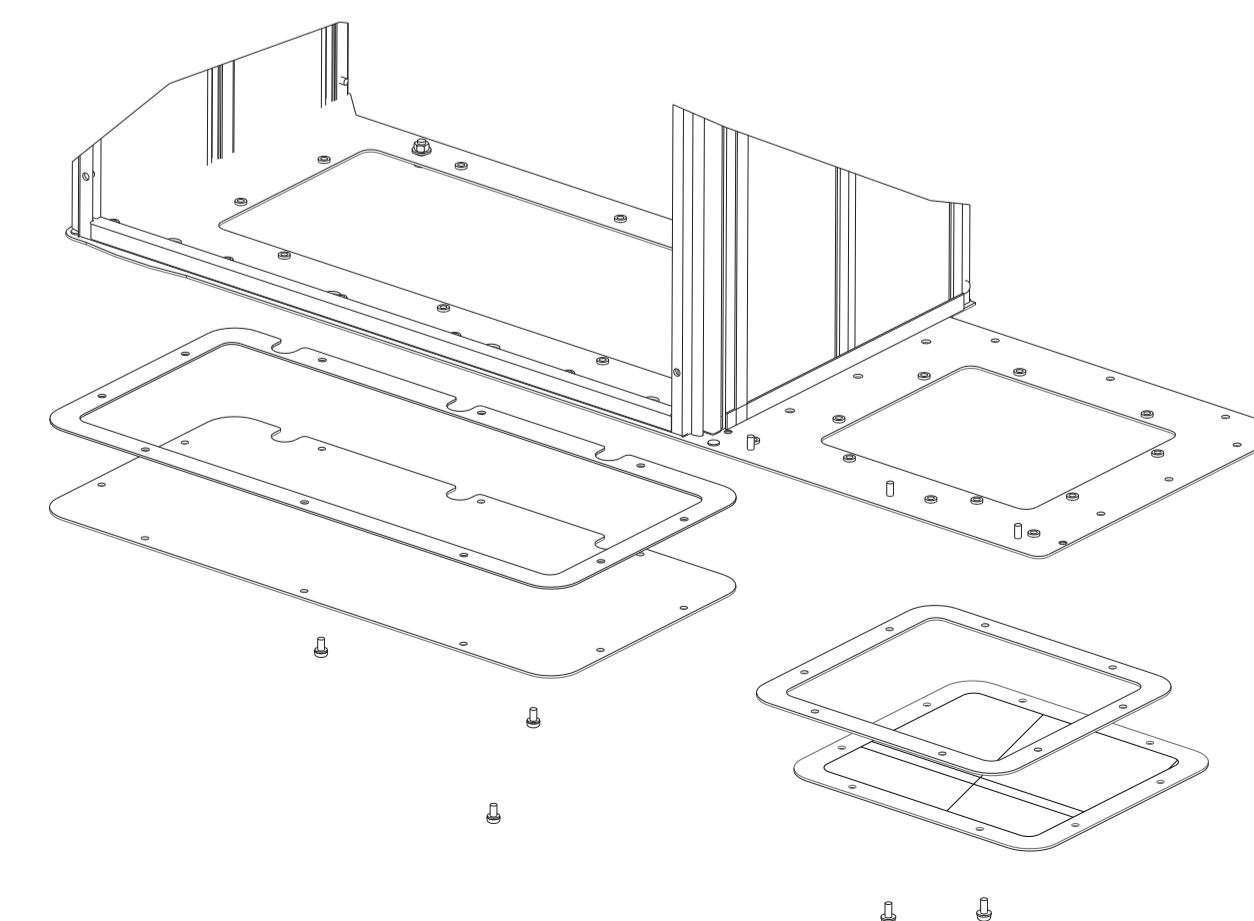
- COOLING:
- 1) THE VLT FREQUENCY CONVERTER MUST BE INSTALLED VERTICALLY WITH THE MINIMUM INDICATED FREE SPACE ABOVE THE ENCLOSURE.
 - 2) ALL IP21/UL TYPE NEMA 1 AND IP54/UL TYPE NEMA 12 UNITS MAY BE MOUNTED SIDE BY SIDE WITH NO MINIMUM CLEARANCE.
 - 3) FAILURE TO REINSTALL THE CABINET FLOOR GLAND PLATES WILL HAVE A NEGATIVE INFLUENCE ON THE INTERNAL COOLING CAPACITY OF THE UNIT AND MAY CAUSE TRIP FAULTS.
 - 4) STANDARD COOLING CONFIGURATION IS WITH THE INTAKE THROUGH THE BASE CABLE PLINTH AND EXHAUST OUT THE TOP OF THE ENCLOSURE. THE DOORS ARE ALSO EQUIPPED WITH FANS TO PROVIDE COOLING FOR THE CABINET.

BACK WALL COOLING:
 OPTIONAL BACK WALL COOLING CONFIGURATION IS WITH THE INTAKE THROUGH THE LOWER REAR OF THE CABINET. THE EXHAUST IS EITHER OUT THE UPPER REAR FOR THE DRIVE OR OUT THE TOP OF THE ENCLOSURE FOR THE FILTER. (CONSULT THE FACTORY WHEN PLACING UNITS NEXT TO EACH OTHER IN THIS CONFIGURATION).

WALL MOUNTING:
 THE DRIVE IS NOT INTENDED TO BE WALL MOUNTED. IF THE UNIT IS SECURE TO THE WALL, THE BOTTOM OF THE UNIT MUST BE SUPPORTED BY THE FLOOR USING THE ATTACHED PLINTH OR OTHER FACTORY APPROVED MEANS.

LIFTING
 THE DRIVE IS INTENDED TO BE LIFTED USING THE HOLES IN THE SIDES OF THE BACKCHANNEL. THERE ARE THREE HOLES, ONE EACH ON THE OUTSIDE AND ONE AT THE CENTER WHERE THE DRIVE AND FILTER ARE CONNECTED.

RATING:
 IP21/ IP54 AND NEMA 1 AND NEMA 12.



DATE	177R0620	REV	002
WEEK	LHD120-IP54-VI	SHEET	4 OF 4