

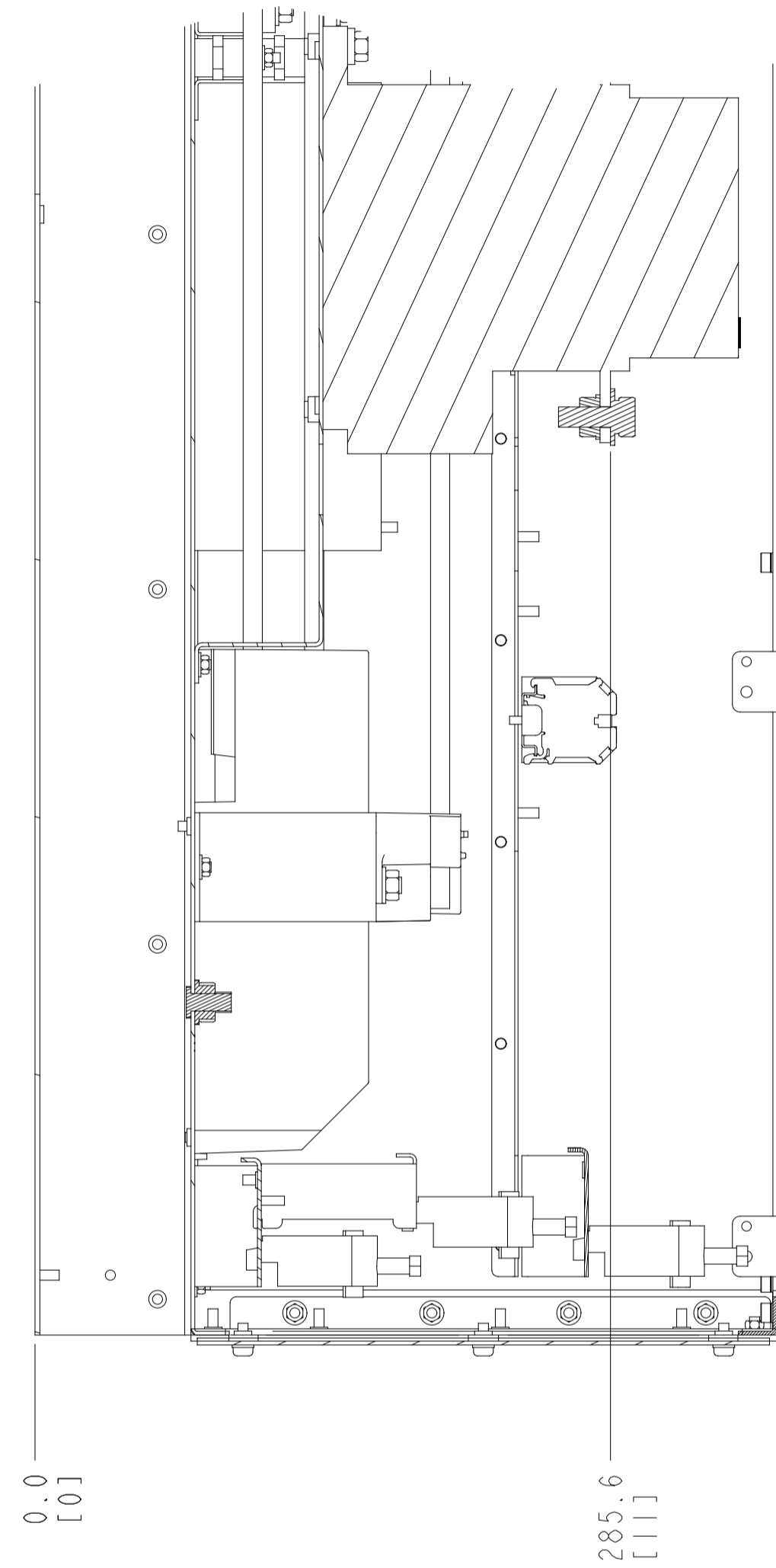
1. MAX AIRFLOW (BACKCHANNEL) - 7 M³ / MIN (250 CFM)
2. MAX AIRFLOW (CABINET) - 1.7 M³ / MIN (60 CFM)
3. MAX WEIGHT = 128 KG (283 LBS)
4. CENTER OF GRAVITY:
APPROXIMATE LOCATION ONLY, LOCATION MAY VARY BASED ON POWER RATING AND OPTIONS ORDERED.

▽ CRITICAL CHARACTERISTICS
 ▽ KEY CHARACTERISTICS
 ○ INSPECTION
 MUST COMPLY TO ROHS DIRECTIVE 2011/65/EU

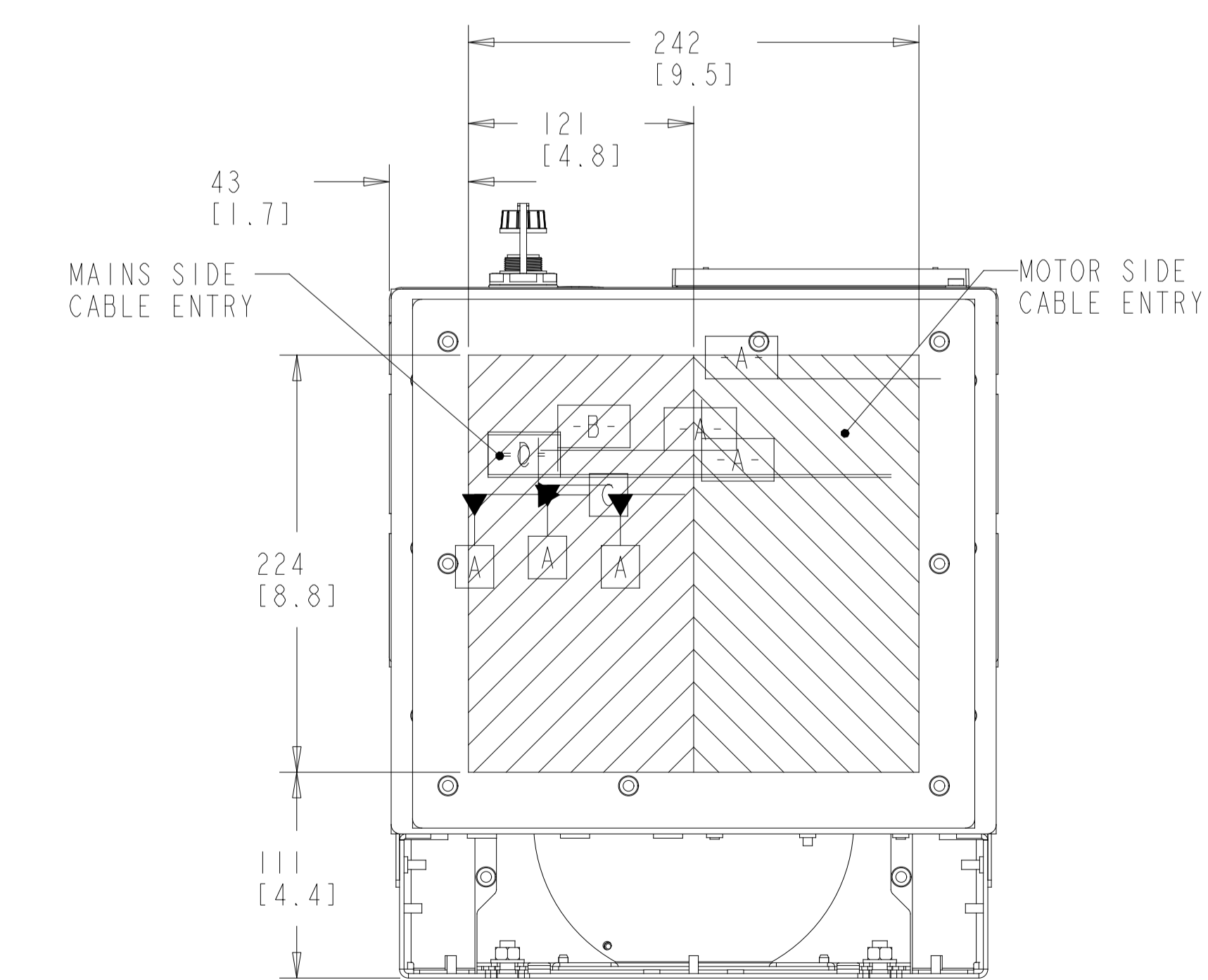
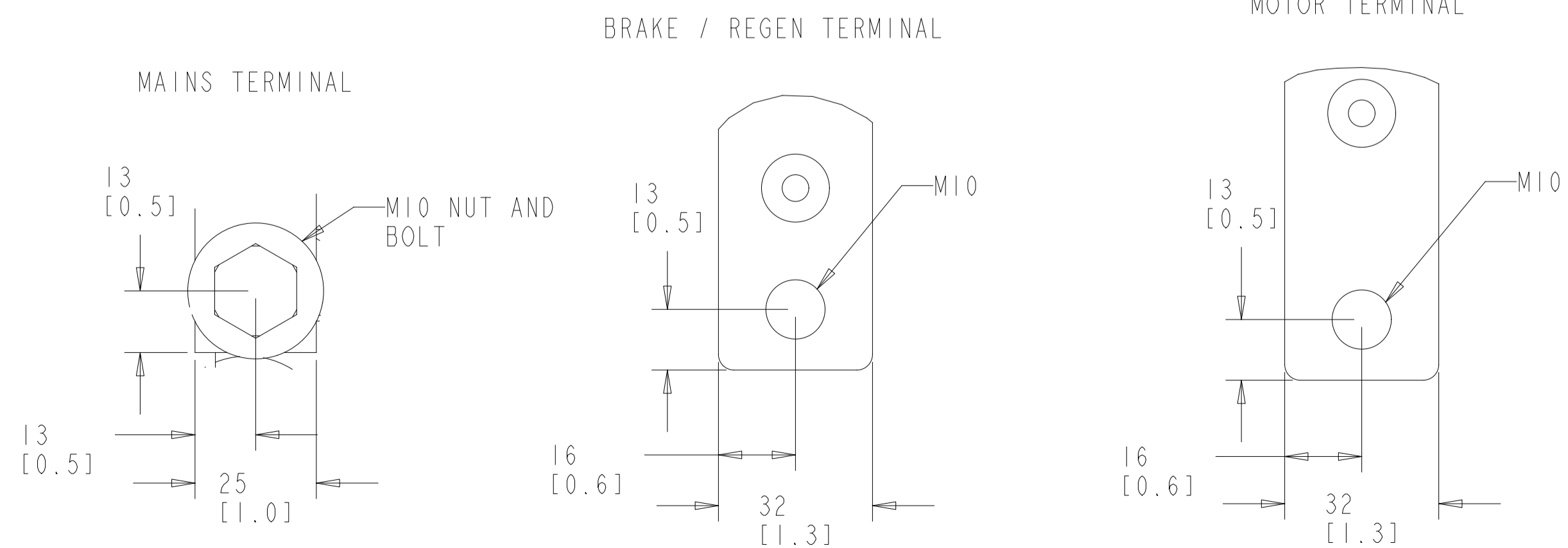
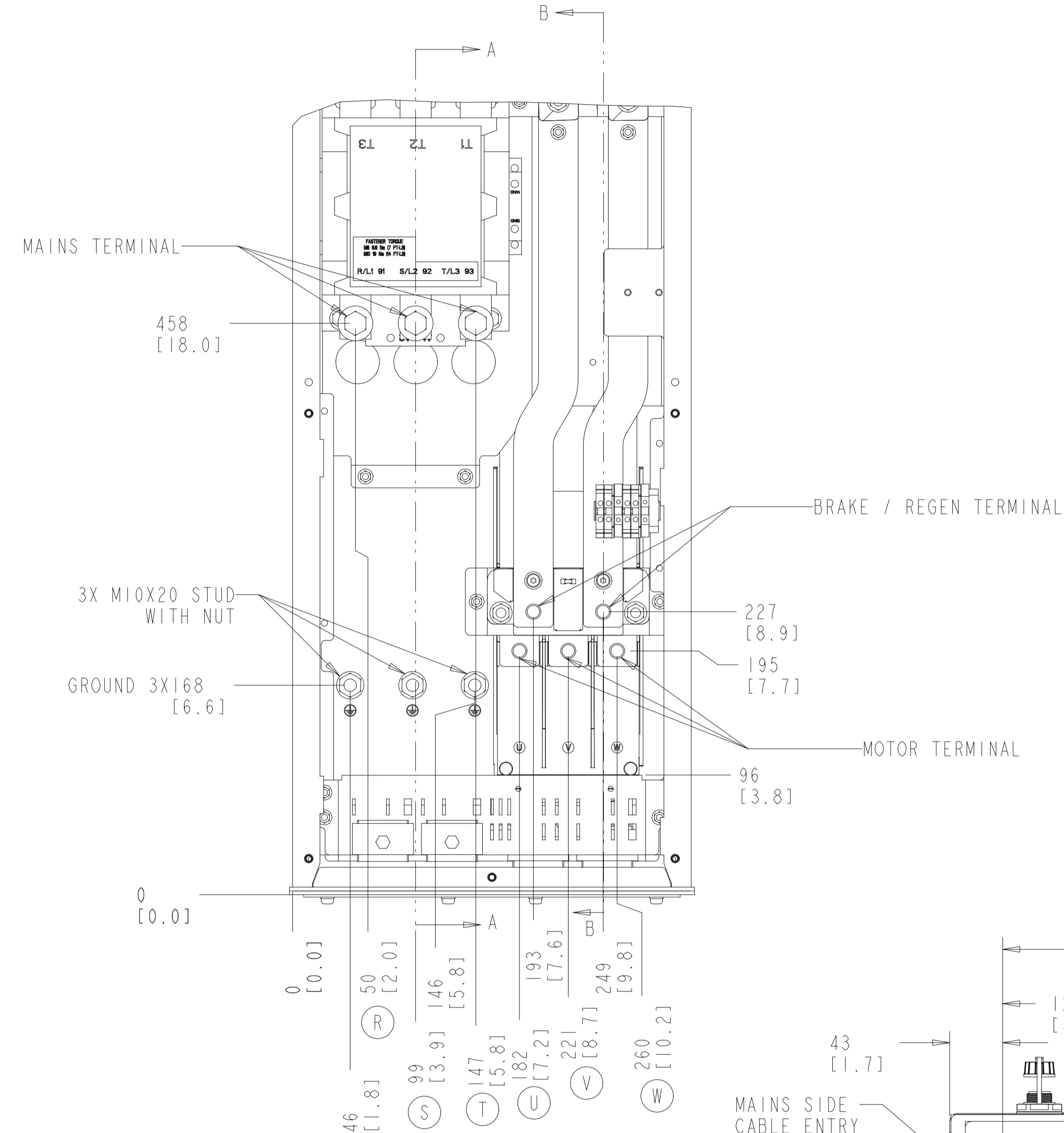
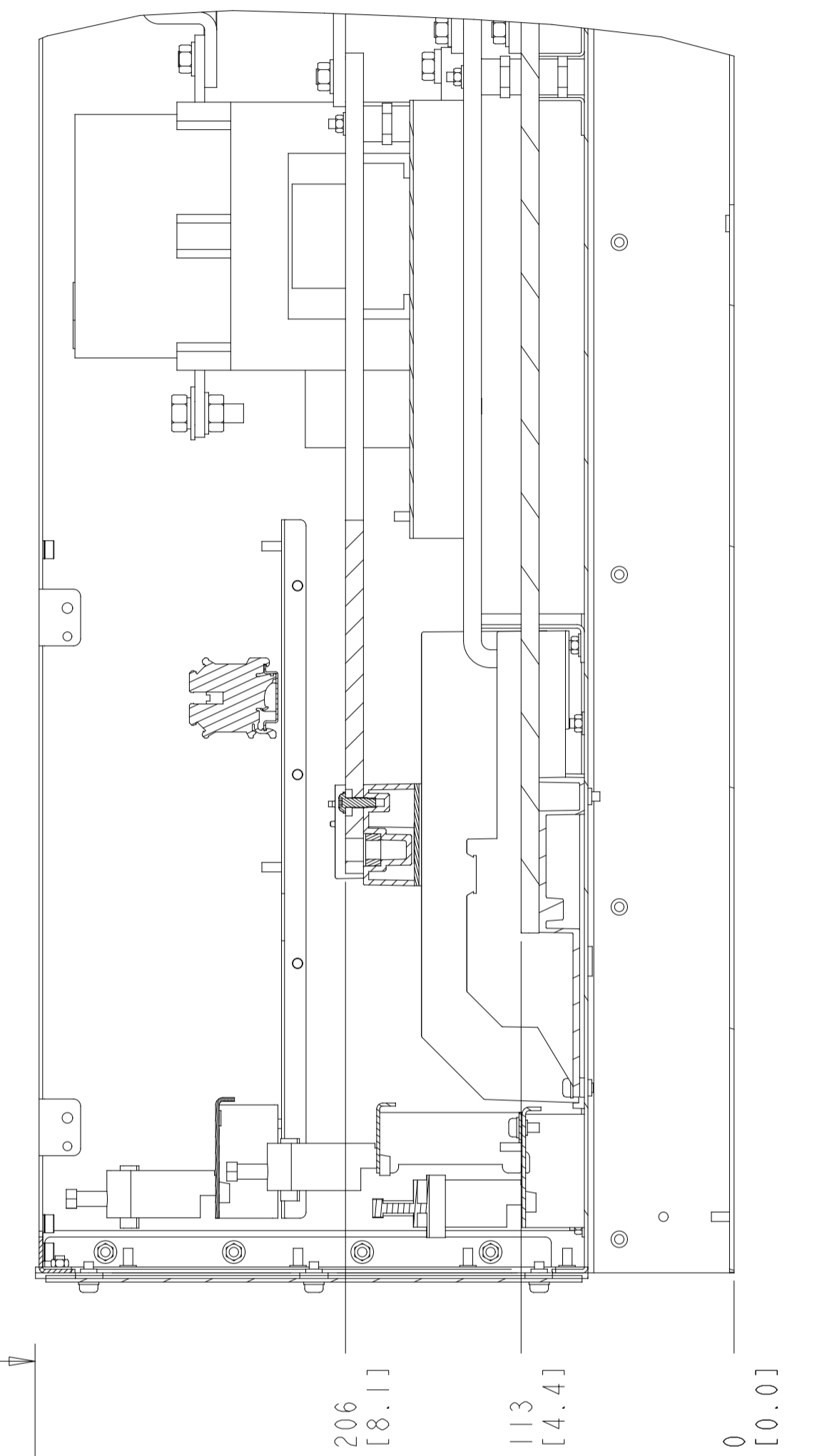
INTERPRET DIM. & TOL. PER ASME Y14.5M-1994		THIRD ANGLE PROJECTION	SCALE	SIZE	MATERIAL	N/A
ALL DIMENSIONS ARE IN MILLIMETERS			0.175	A1	FINISH	N/A
TOLERANCES UNLESS OTHERWISE SPECIFIED					DESCRIPTION	
.±1.0 .±0.50 ±1.0				INSTALLATION DRAWING, DGH, IP21/54		
CHANGED	BY	DATE				
DESIGNED	NO	DATE				
CHECKED						
CONFIDENTIAL - PROPERTY OF DANFOSS A/S, NORDBORG, DENMARK. NOT TO BE HANDED OVER TO BE COPIED OR BE USED BY A THIRD PARTY. TWO OR THREE DIMENSIONAL REPRODUCTION OF CONTENTS TO BE AUTHORIZED BY DANFOSS A/S.		VERSION NUMBER	177R0491	REV	003	
		DATE	P454-1018	SHEET	1 OF 5	

CONTACTOR ONLY

SECTION A-A
MAINS TERMINALS



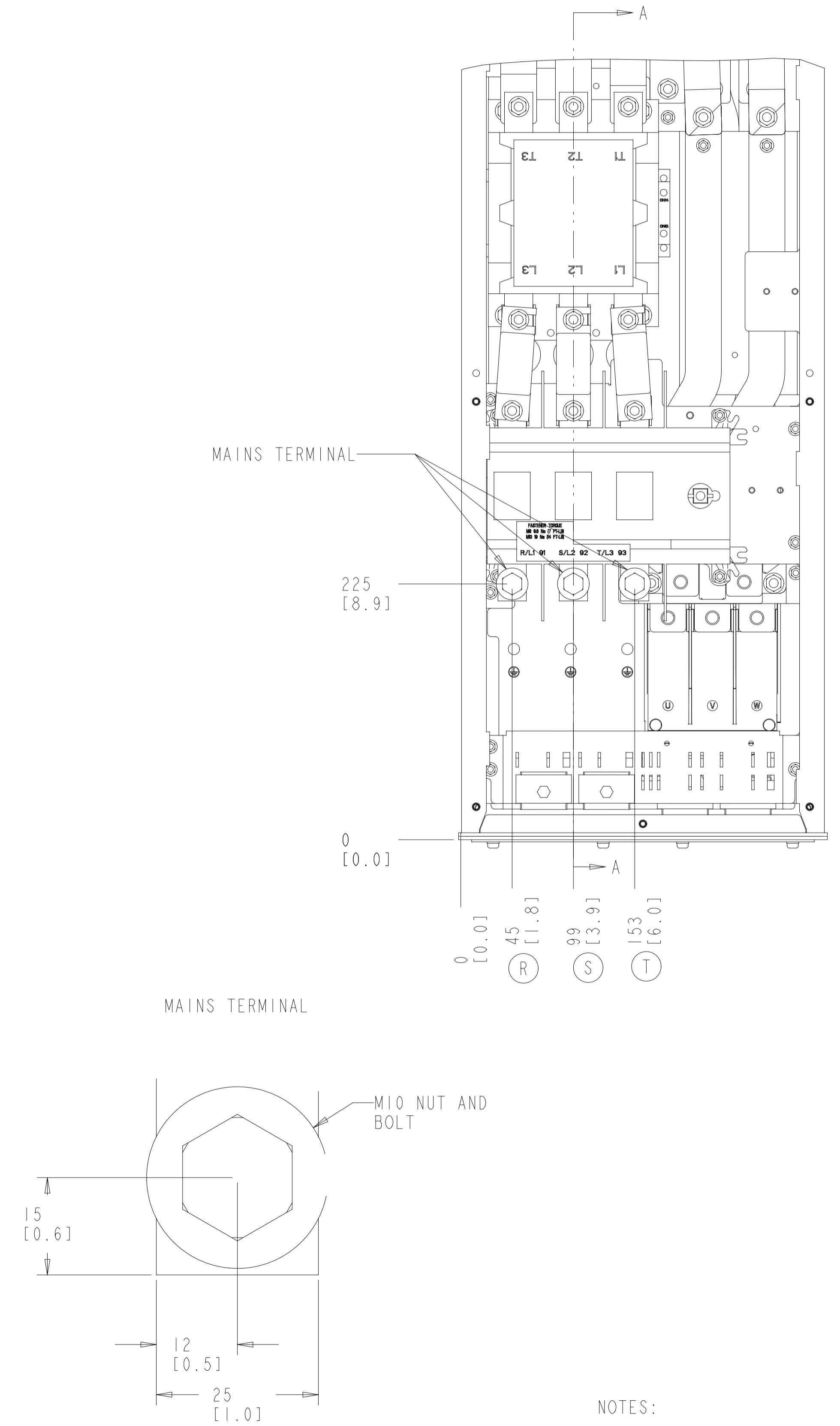
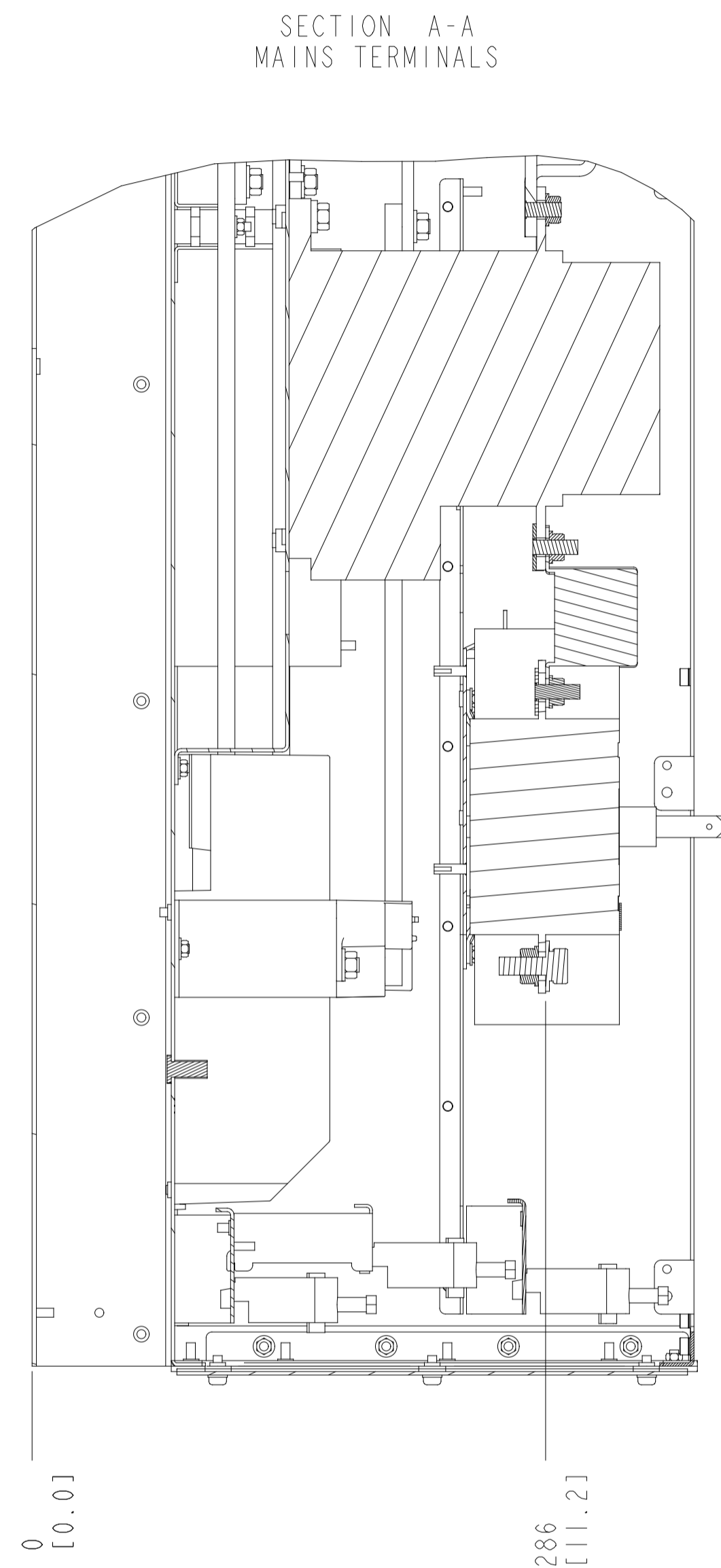
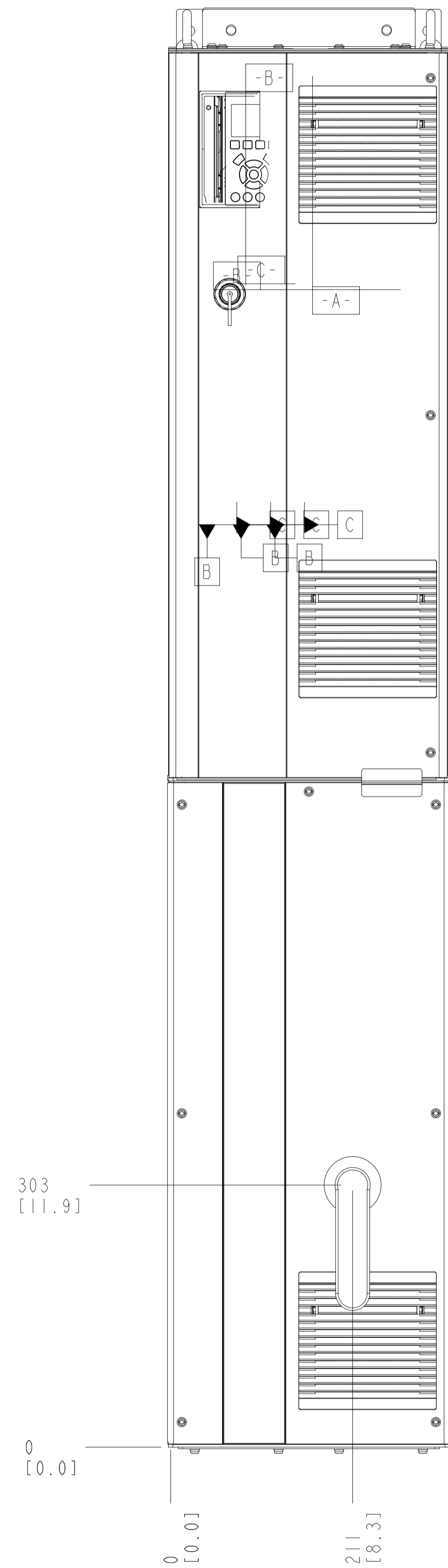
SECTION B-B
MOTOR TERMINALS
BRAKE / REGEN TERMINALS



BOTTOM VIEW

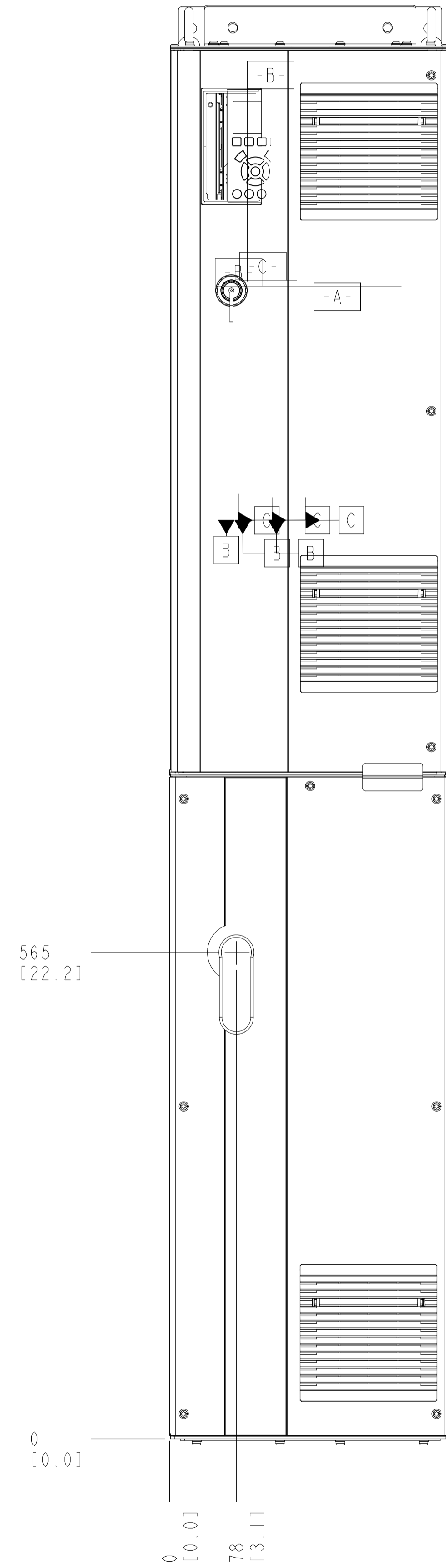
- NOTES:
1. PLACE CABLES THROUGH MARKED AREAS
 2. 95MM² (310 MCM) MAX WIRE SIZE

CONTACTOR AND DISCONNECT

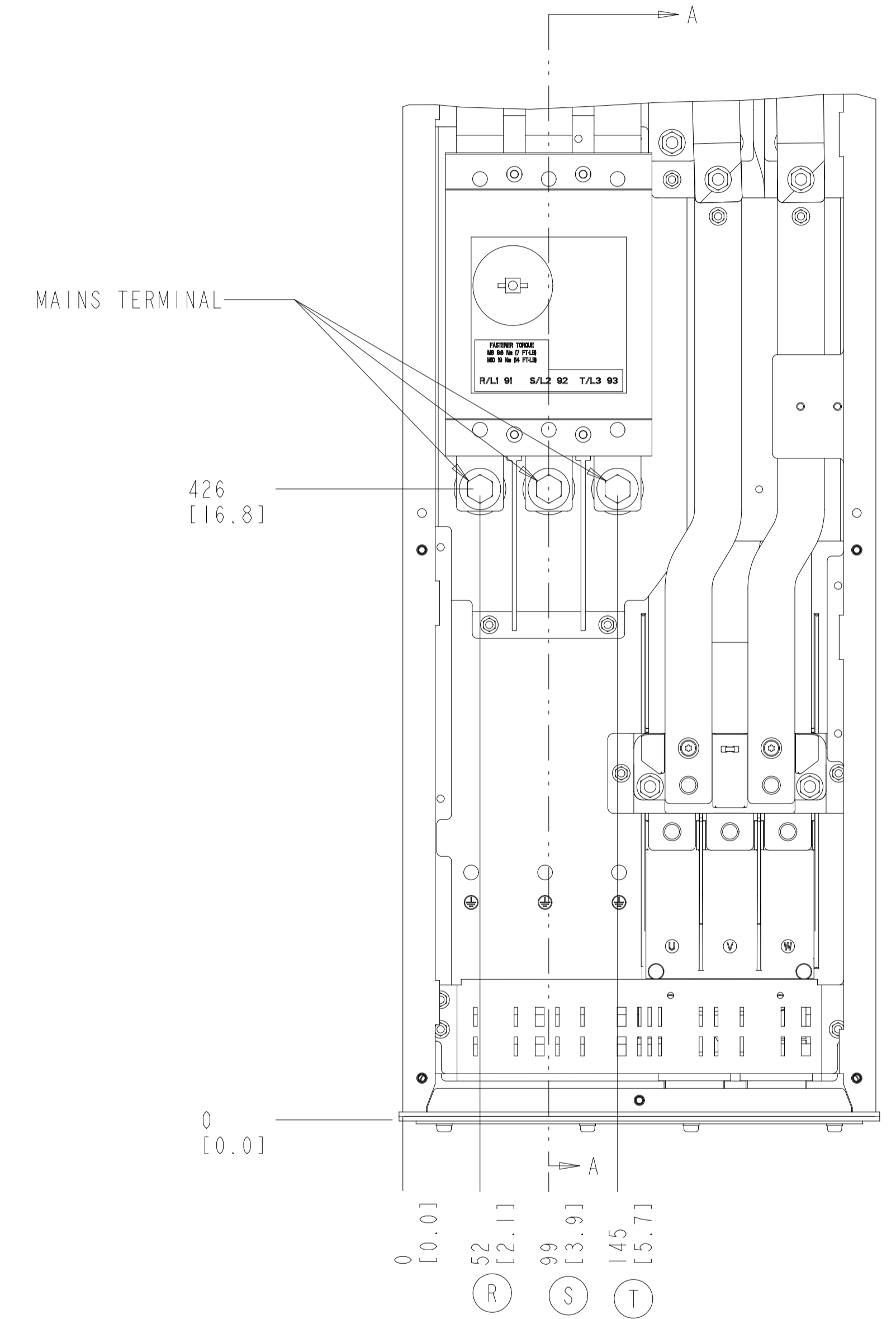
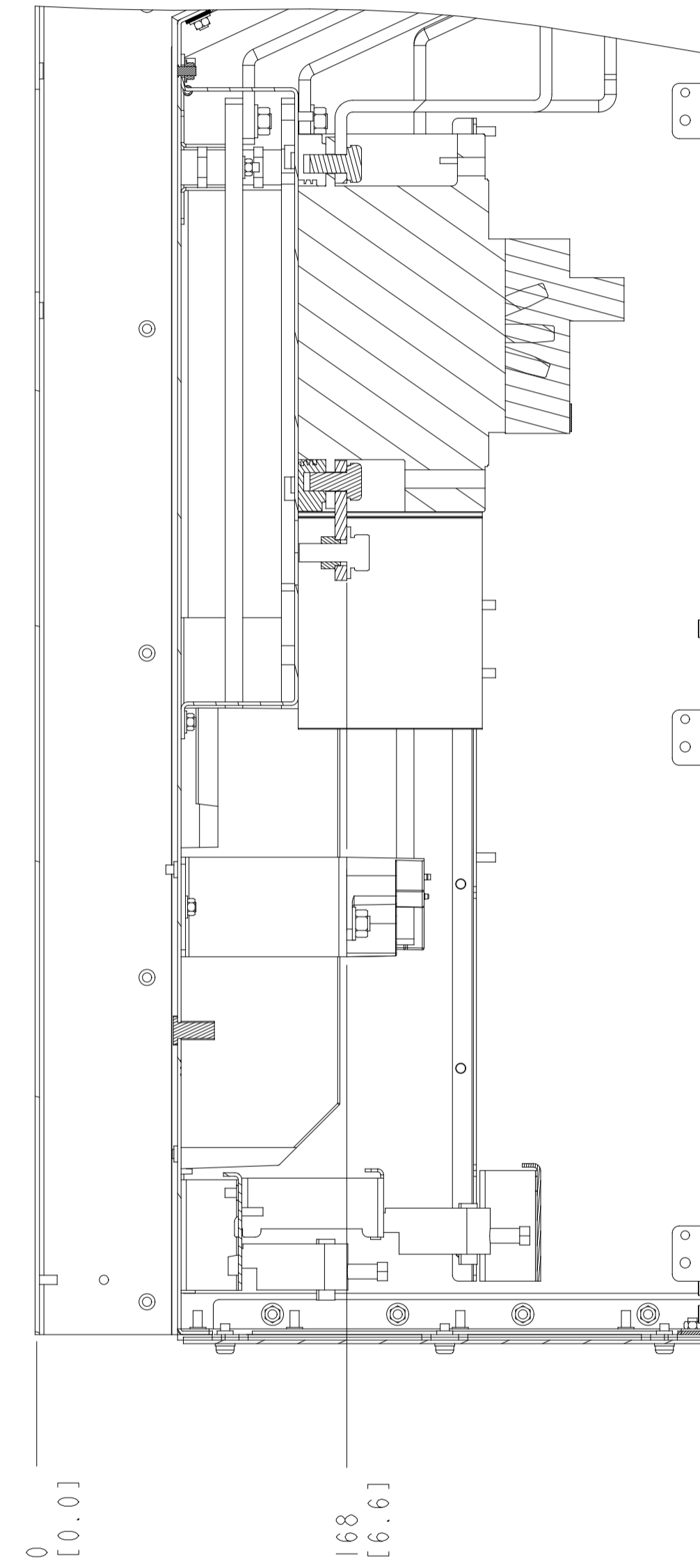


NOTES:
1. REFER TO SHEET 2 FOR BRAKE AND MOTOR TERMINAL DETAILS

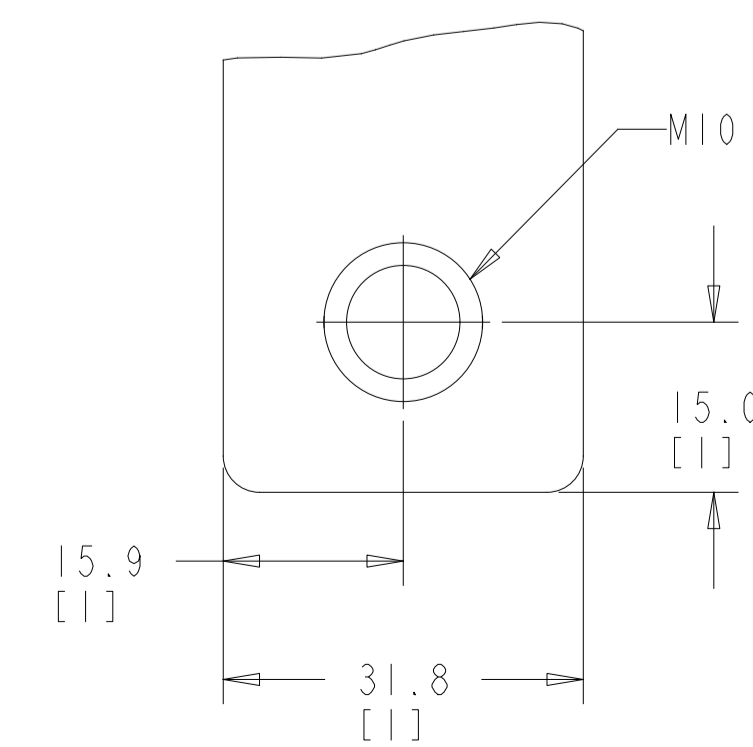
CIRCUIT BREAKER



SECTION A-A MAINS TERMINALS



MAINS TERMINAL SCALE 1.500



NOTES:

1. REFER SHEET 2 FOR BRAKE AND MOTOR
TERMINAL DETAILS

THE TABLES BELOW ARE USED TO DETERMINE THE FRAME SIZE FOR A GIVEN POWER AND VOLTAGE RATING, WITH A CIRCUIT BREAKER, CONTACTOR OR CONTACTOR+DISCONNECT.

1) IDENTIFY THE POWER IN NORMAL OVERLOAD (N.O.) OR HIGH OVERLOAD (H.O.), KILOWATTS (KW) OR HORSEPOWER (HP).

2) READ DOWN THE COLUMN TO THE ROW WITH THE CORRECT VOLTAGE TO IDENTIFY THE FRAME SIZE.

THIS DRAWING IS FOR D6H FRAMES,

THE TABLE BELOW CAN BE USED TO DETERMINE THE FRAME SIZE IF THE SPECIFIC MODEL/TYPE CODE WITH A CIRCUIT BREAKER, CONTACTOR OR CONTACTOR+DISCONNECT.

KW RATED DRIVES

KW HIGH OVERLOAD	75	90	110	150	110	132	160
KW NORMAL OVERLOAD	90	110	150	160	132	160	200
208V / 230V	D6H	D6H	D6H	D6H			
400V		D6H			D6H	D6H	
500V					D6H	D6H	D6H
525V	D6H	D6H			D6H	D6H	
690V		D6H			D6H	D6H	

HORSEPOWER RATED DRIVES

HP HIGH OVERLOAD	75	100	125	150	200
HP NORMAL OVERLOAD	100	125	150	200	250
208V	D6H	D6H	D6H	D6H	
460V			D6H	D6H	D6H
575V		D6H	D6H	D6H	

PLATFORM	VOLTAGE	MODEL/TYPECODE	FRAME(IP21/IP54)
HVAC	T2	FC-102N90KT2	D6H
		FC-102N110KT2	
		FC-102N150KT2	
	T4	FC-102N160KT2	
		FC-102N110T4	
		FC-102N132T4	
T7	FC-102N160T4		
	FC-102N110T7		
	FC-102N132T7		
AQUA	T2	FC-102N160T7	
		FC-102N90KT2	
		FC-102N110KT2	
	T4	FC-102N150KT2	
		FC-102N160KT2	
		FC-202N110T4	
	T7	FC-202N132T4	
		FC-202N160T4	
		FC-202N110T7	
AUTOMATION	T2	FC-202N132T7	
		FC-202N160T7	
		FC-302N75KT2	
	T5	FC-302N90KT2	
		FC-302N110KT2	
		FC-302N150KT2	
		FC-302N90KT5	
		FC-302N110T5	
		FC-302N132T5	
T7	FC-302N90KT7		
	FC-302N110T7		
	FC-302N132T7		