

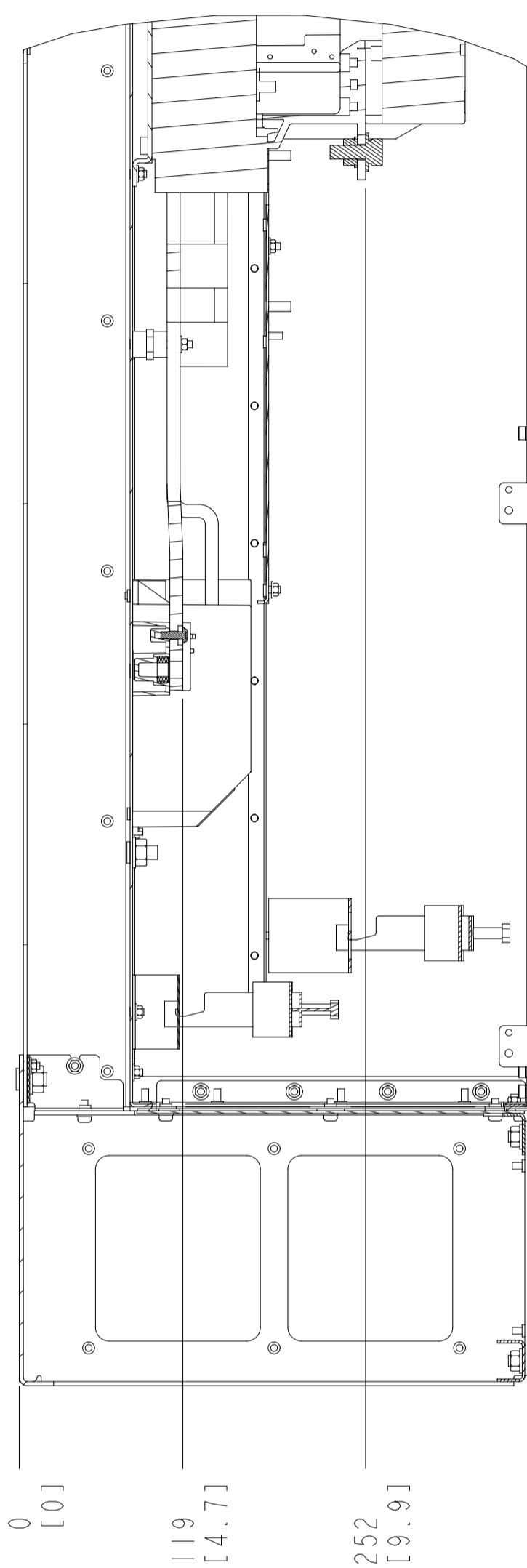
1. MAX AIRFLOW (BACKCHANNEL) - 14 M³ / MIN (500 CFM)
2. MAX AIRFLOW (CABINET) - 3.4 M³ / MIN (120 CFM)
3. MAX WEIGHT = 232 KG (512 LBS)
4. CENTER OF GRAVITY:
APPROXIMATE LOCATION ONLY, LOCATION MAY VARY BASED ON POWER RATING AND OPTIONS ORDERED.

Ⓞ CRITICAL CHARACTERISTICS
 ▽ KEY CHARACTERISTICS
 ○ INSPECTION
 MUST COMPLY TO ROHS DIRECTIVE 2011/65/EU

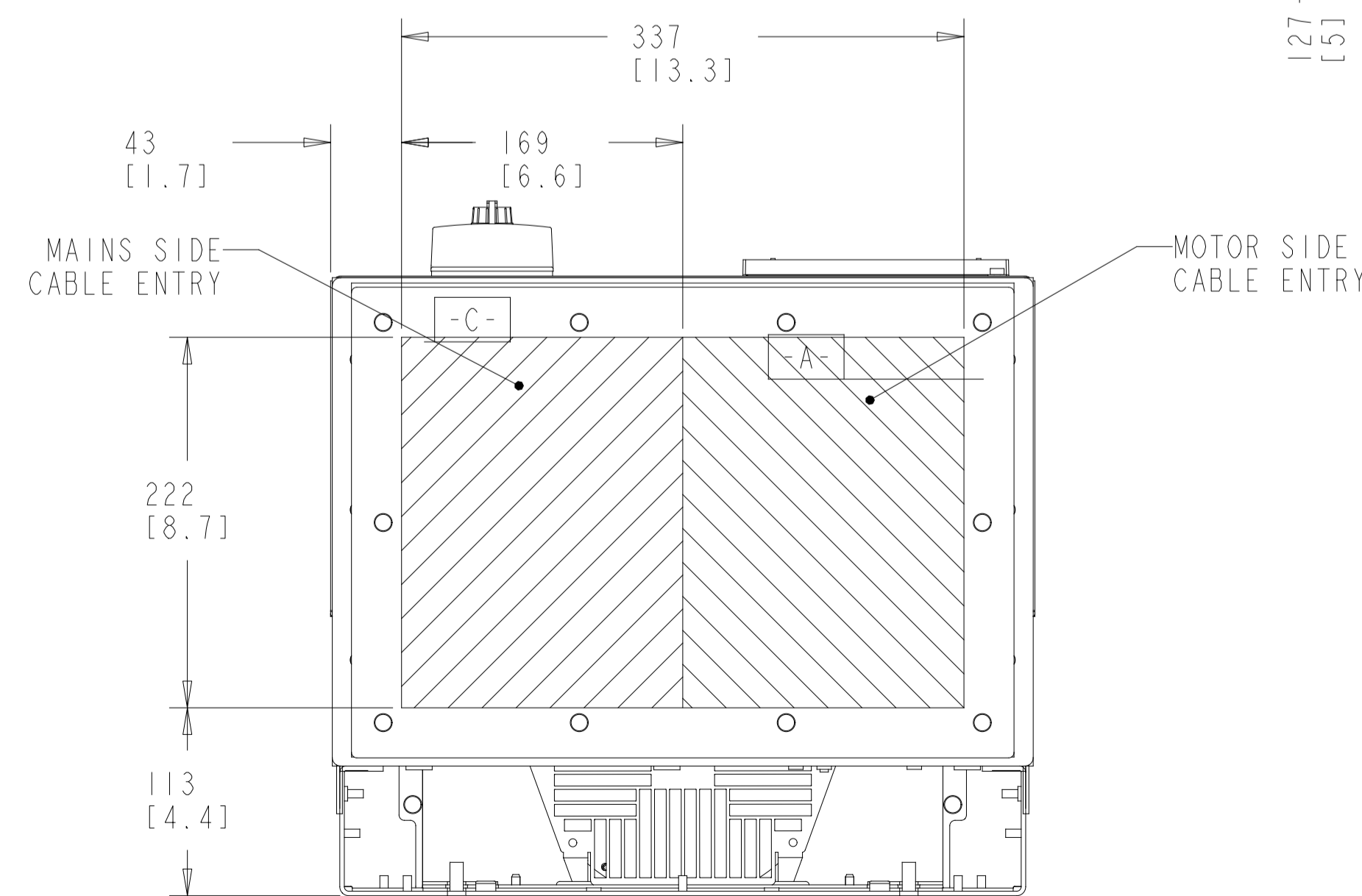
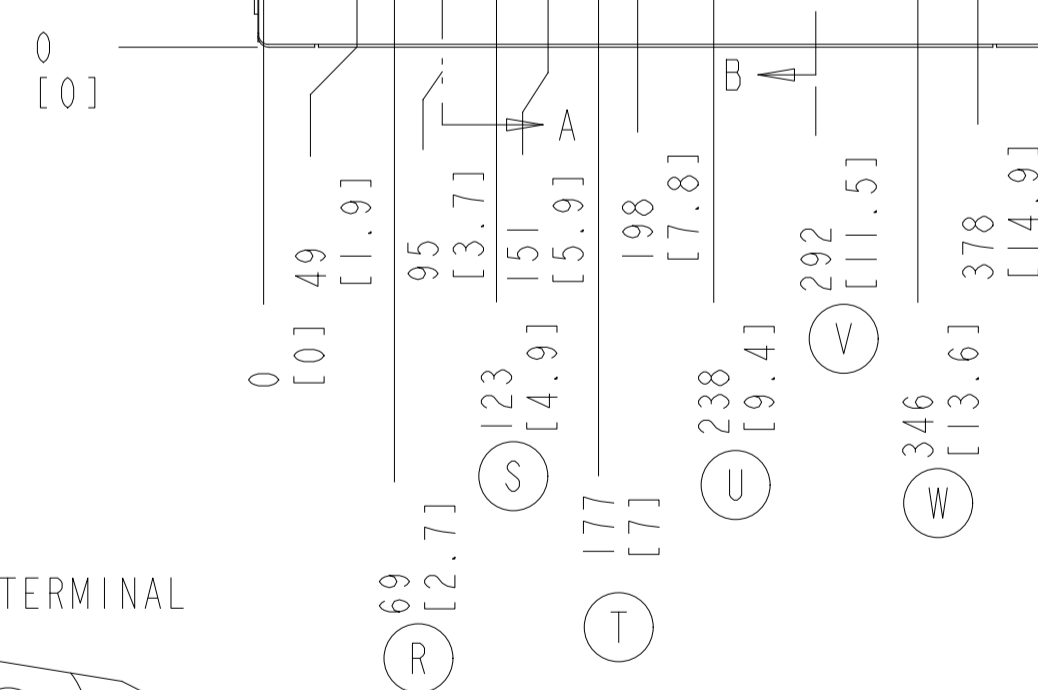
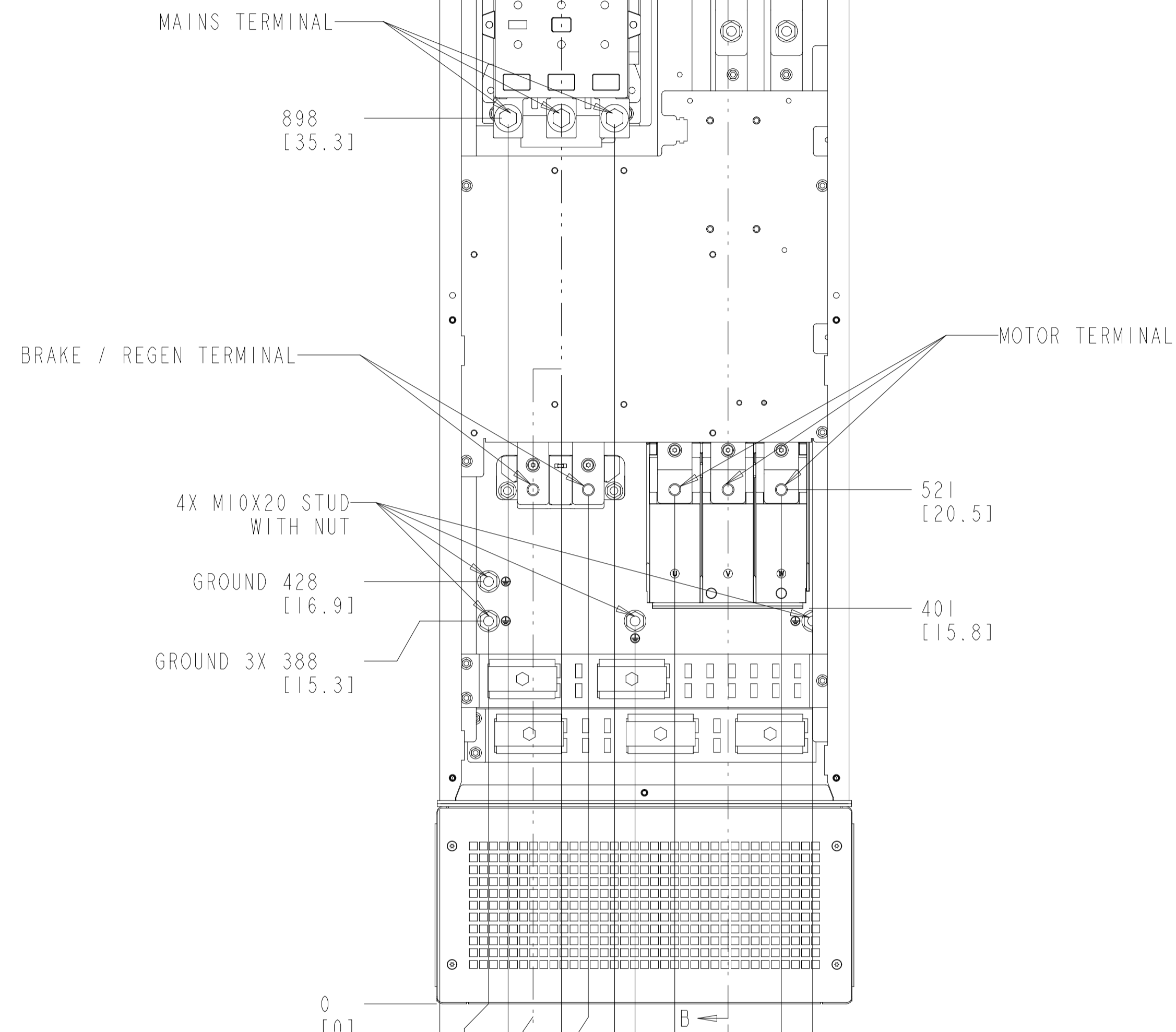
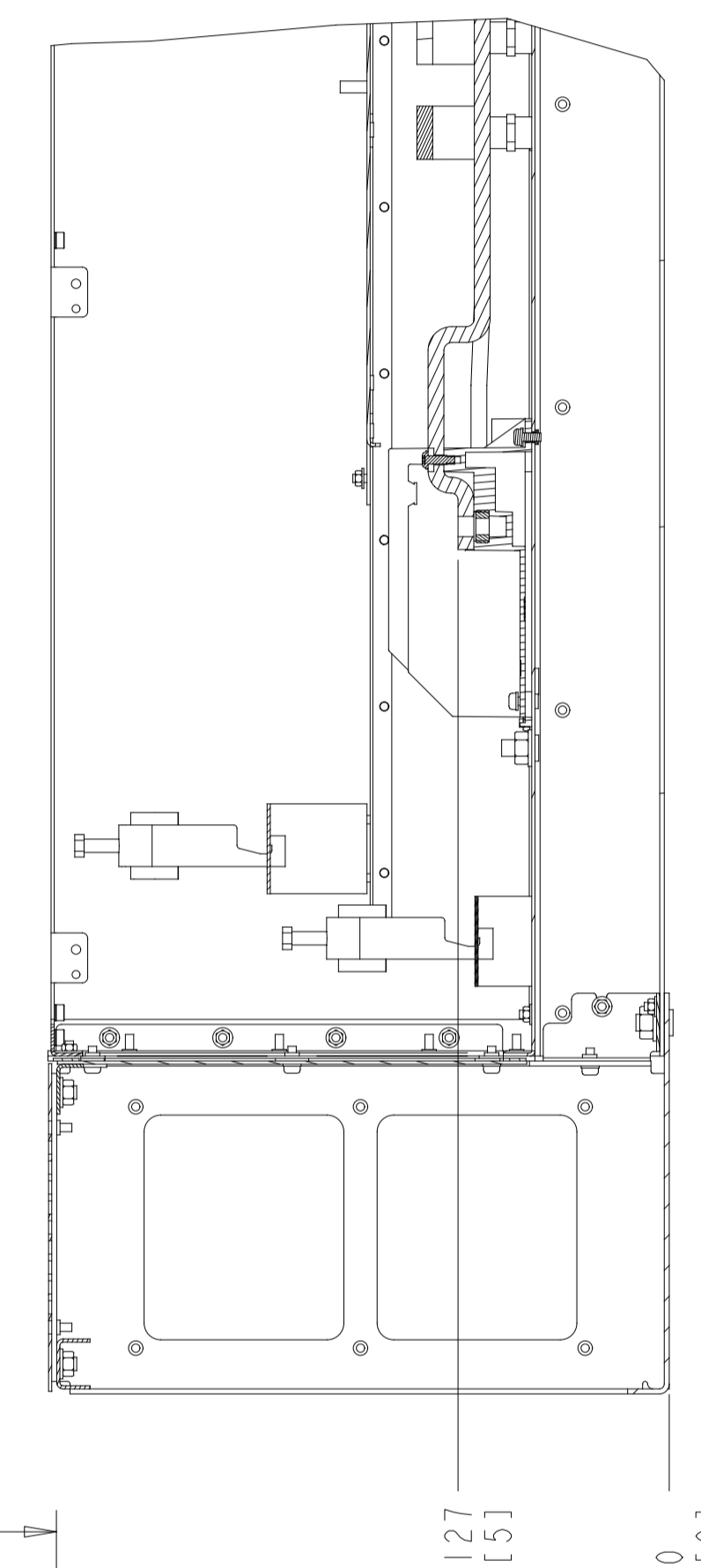
INTERPRET DIM. & TOL. PER ASME Y14.5M-1994		THIRD ANGLE PROJECTION	SCALE	SIZE	MATERIAL	N/A
ALL DIMENSIONS ARE IN MILLIMETERS			0.125	A1	FINISH	N/A
TOLERANCES UNLESS OTHERWISE SPECIFIED						
.±1.0 .±0.50 ±1.0		DESCRIPTION				
PDM CONTROLLED DRAWING - NOT VALID WITHOUT FROZEN DATE IN ID STAMP						
CHANGED	BY	DATE				
DESIGNED	NO	03/28/12				
CHECKED						
CONFIDENTIAL - PROPERTY OF DANFOSS A/S NORBORG, DENMARK. NOT TO BE HANDED OVER TO BE COPIED OR BE USED BY A THIRD PARTY. TWO OR THREE DIMENSIONAL REPRODUCTION OF CONTENTS TO BE AUTHORIZED BY DANFOSS A/S.						DRAWING NUMBER 177R0493 SHEET 1 OF 6
						REV 003 DATE 1 OF 6

CONTACTOR ONLY

SECTION A-A
MAINS TERMINALS
BRAKE/REGEN TERMINALS

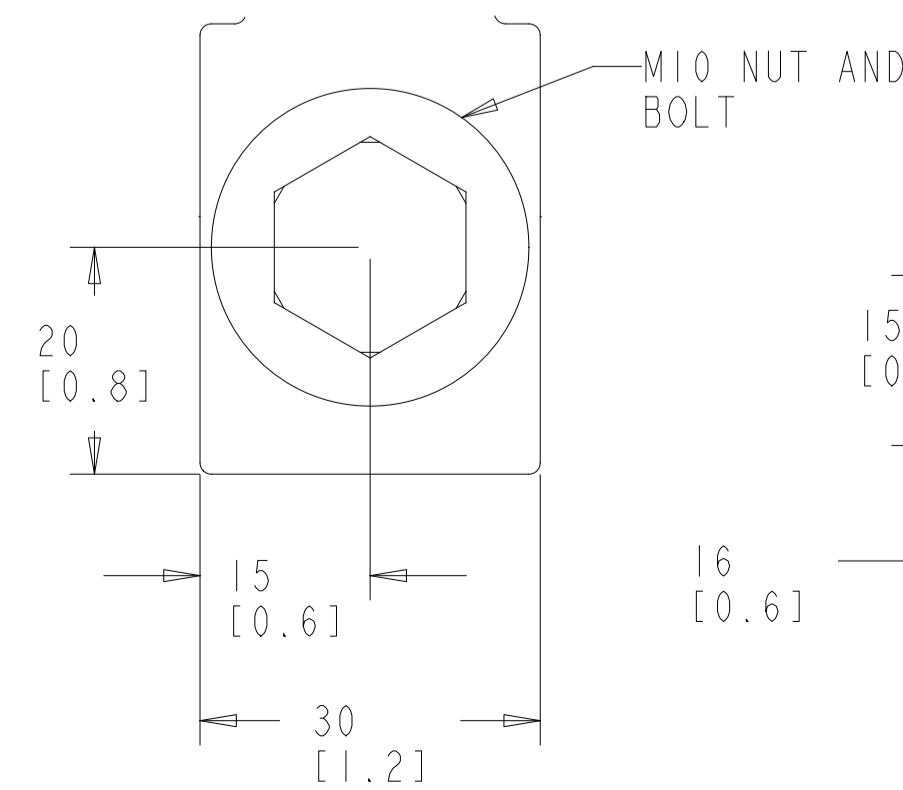


SECTION B-B
MOTOR TERMINALS

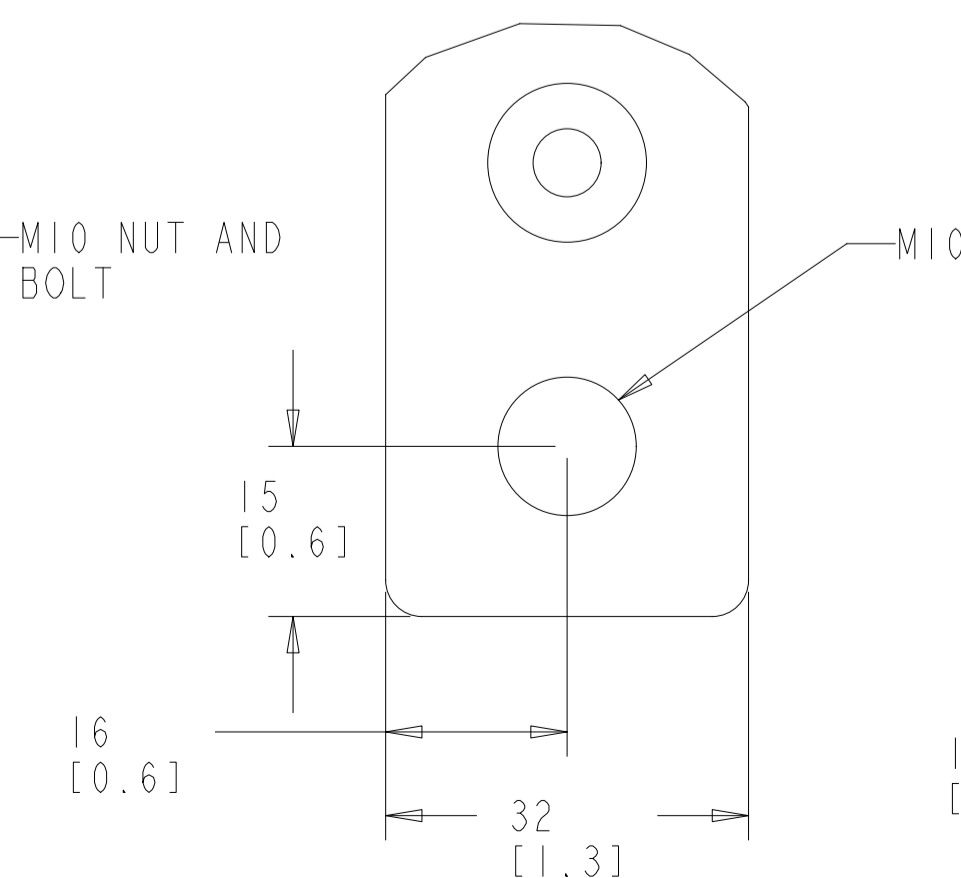


BOTTOM VIEW

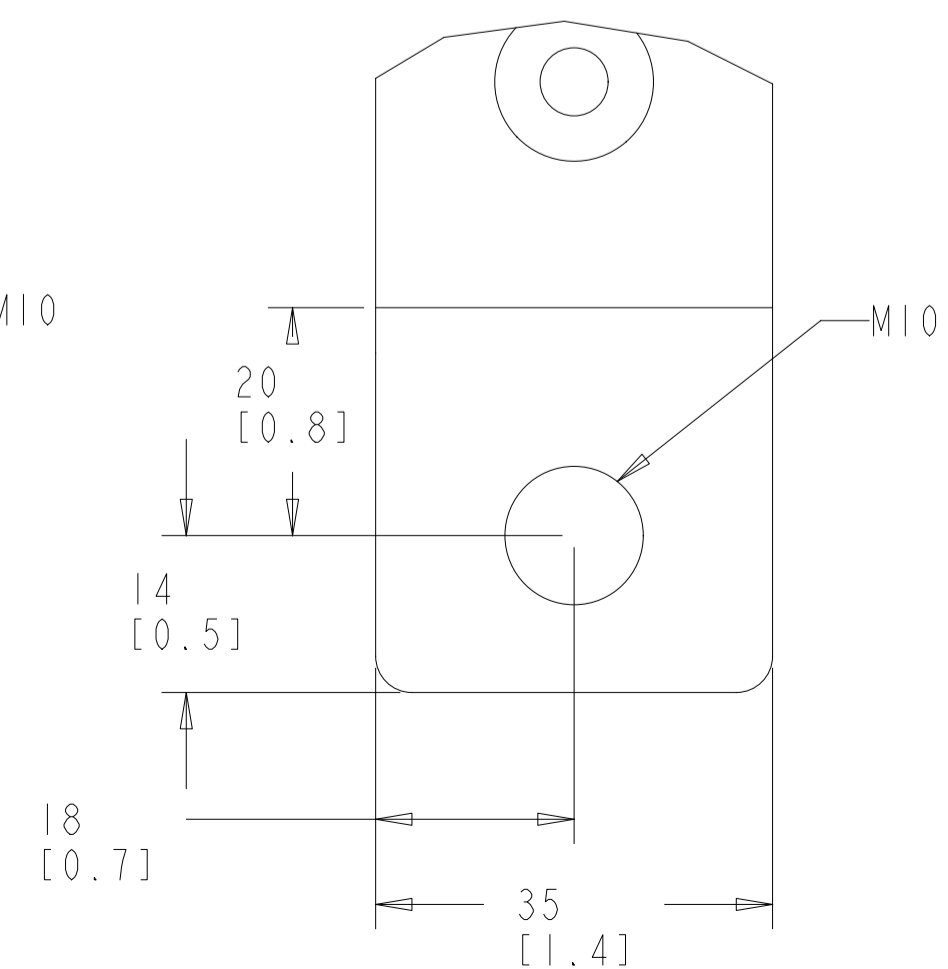
MAINS TERMINAL



BRAKE TERMINAL



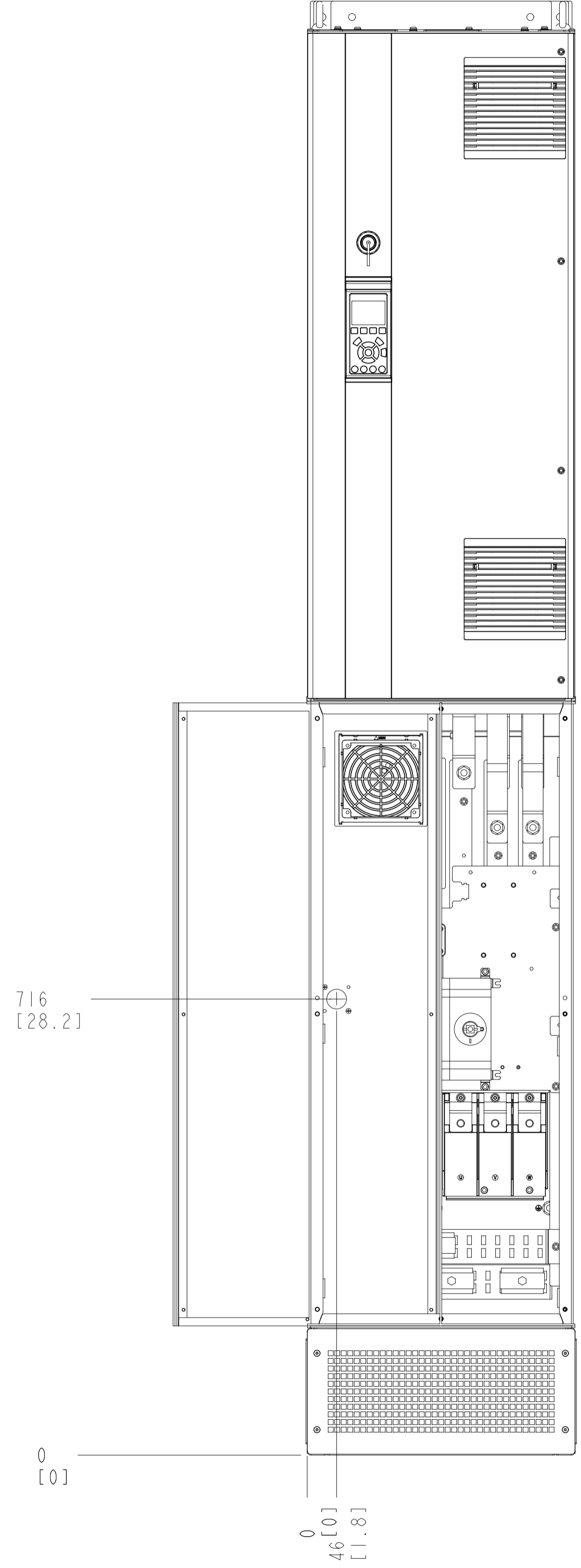
MOTOR TERMINAL



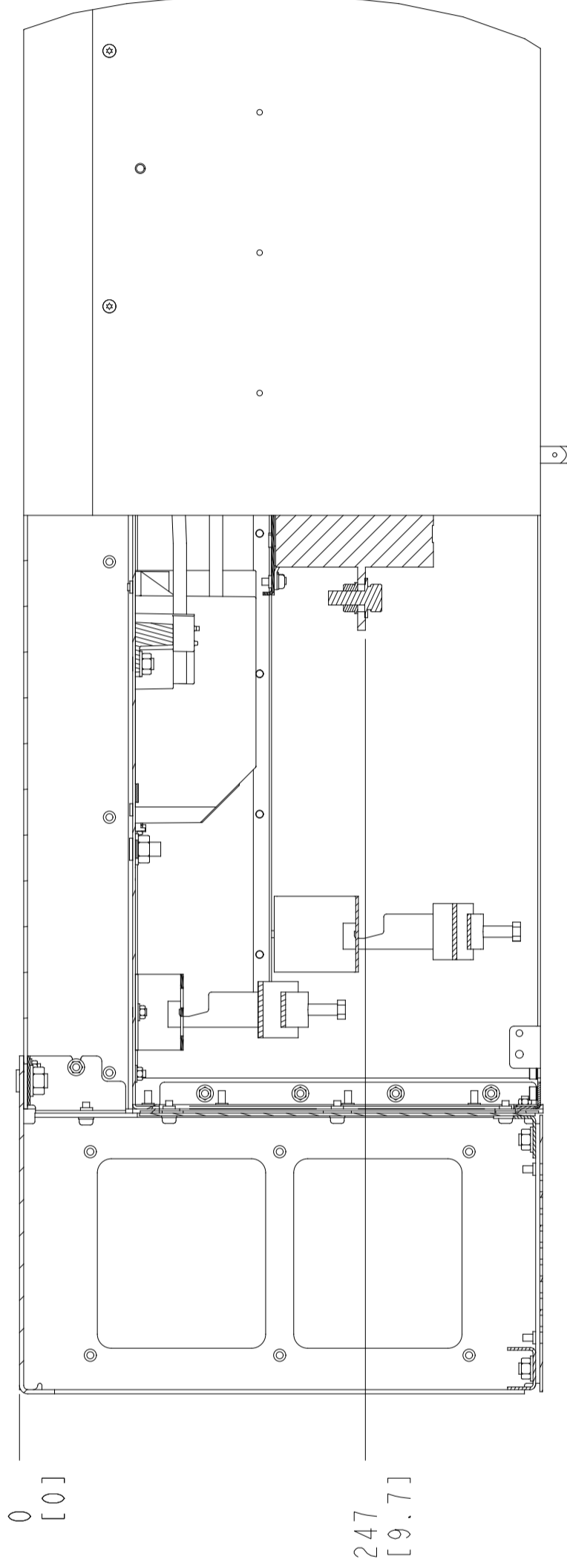
NOTES:

1. PLACE CABLES THROUGH MARKED AREAS
2. 185MM² (400 MCM) MAX WIRE SIZE

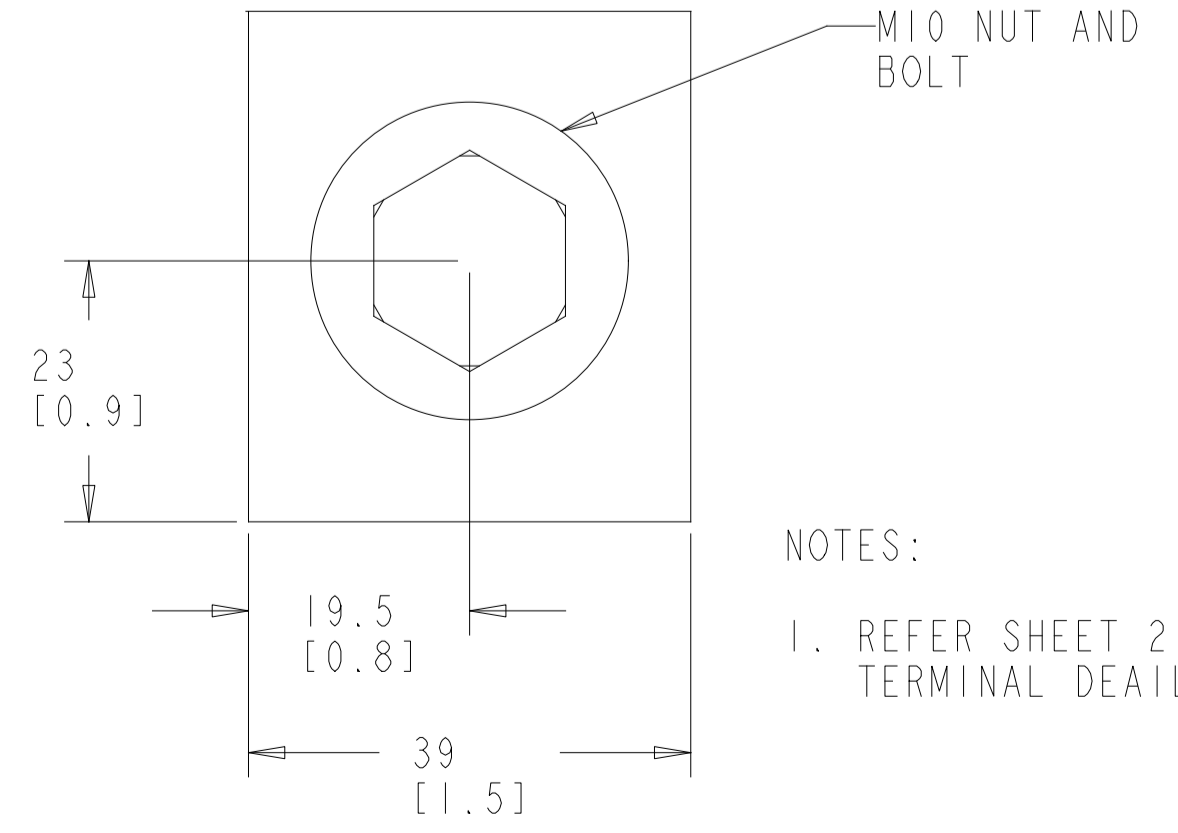
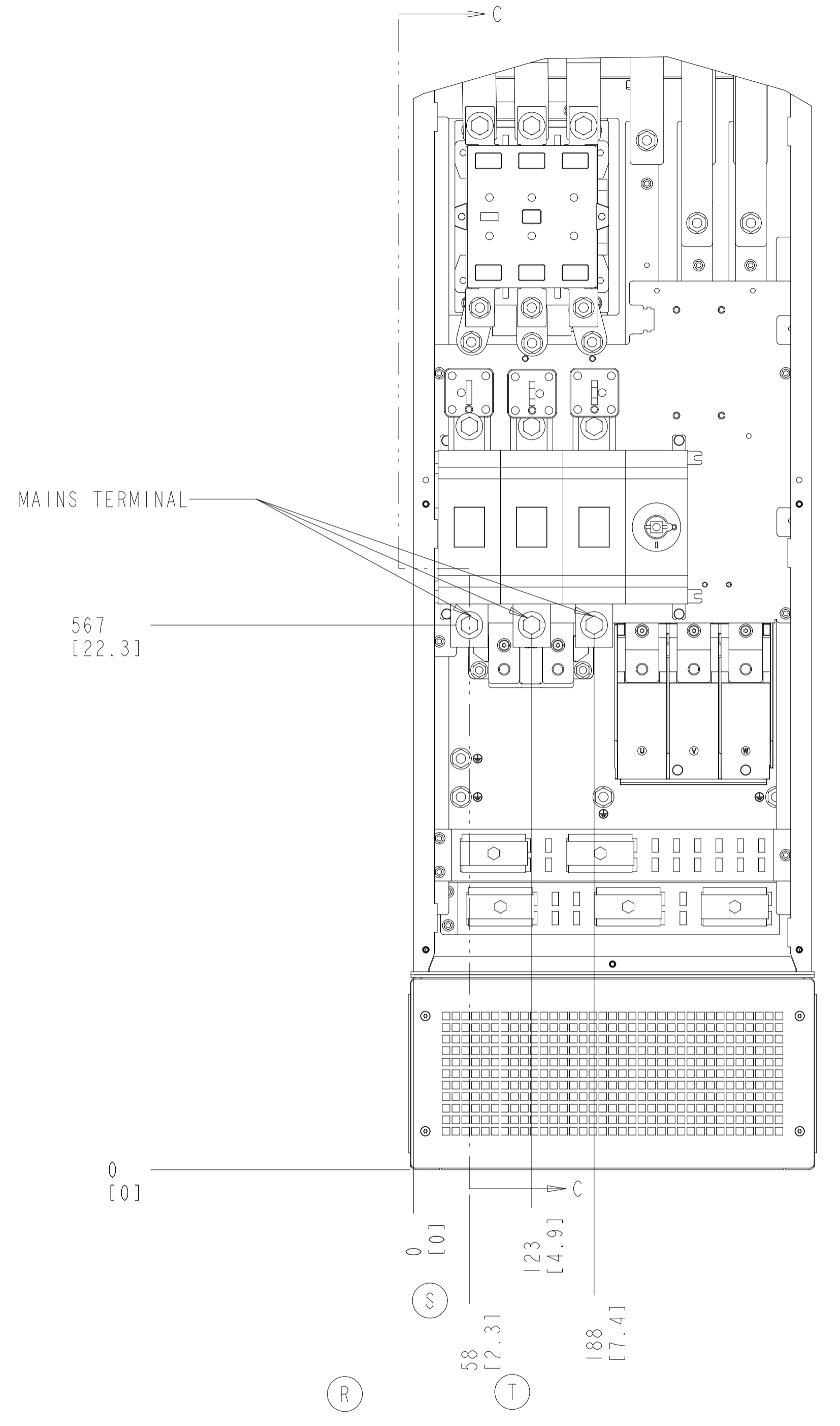
CONTACTOR AND DISCONNECT



SECTION C-C
MAINS TERMINALS



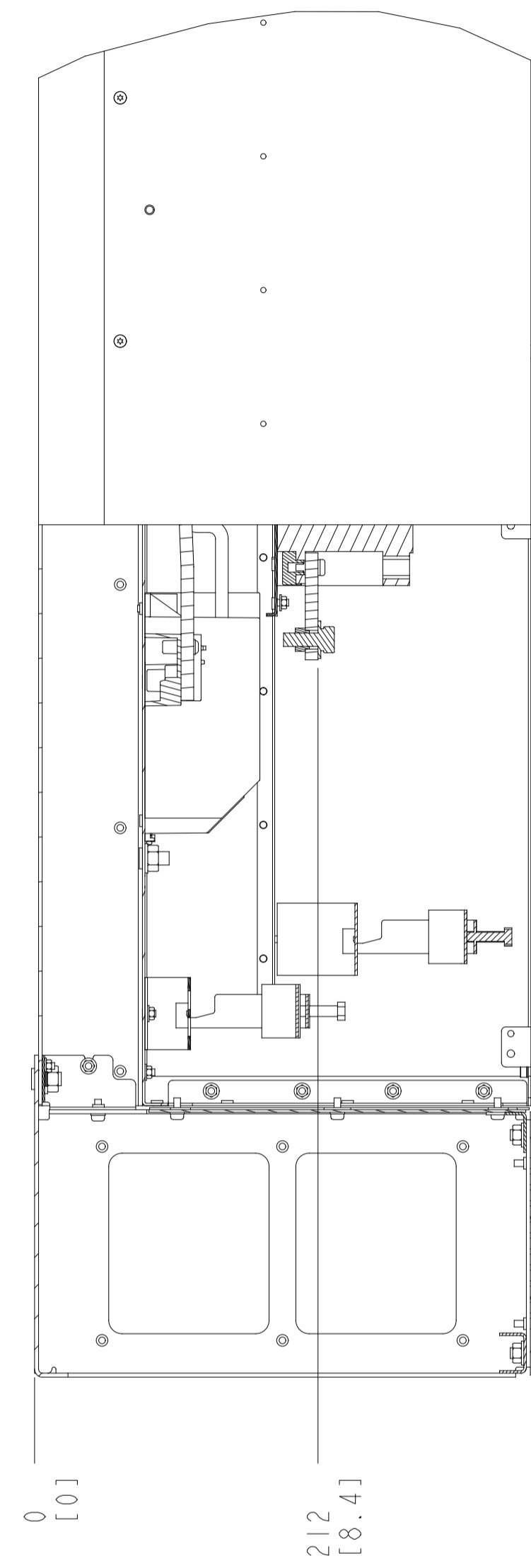
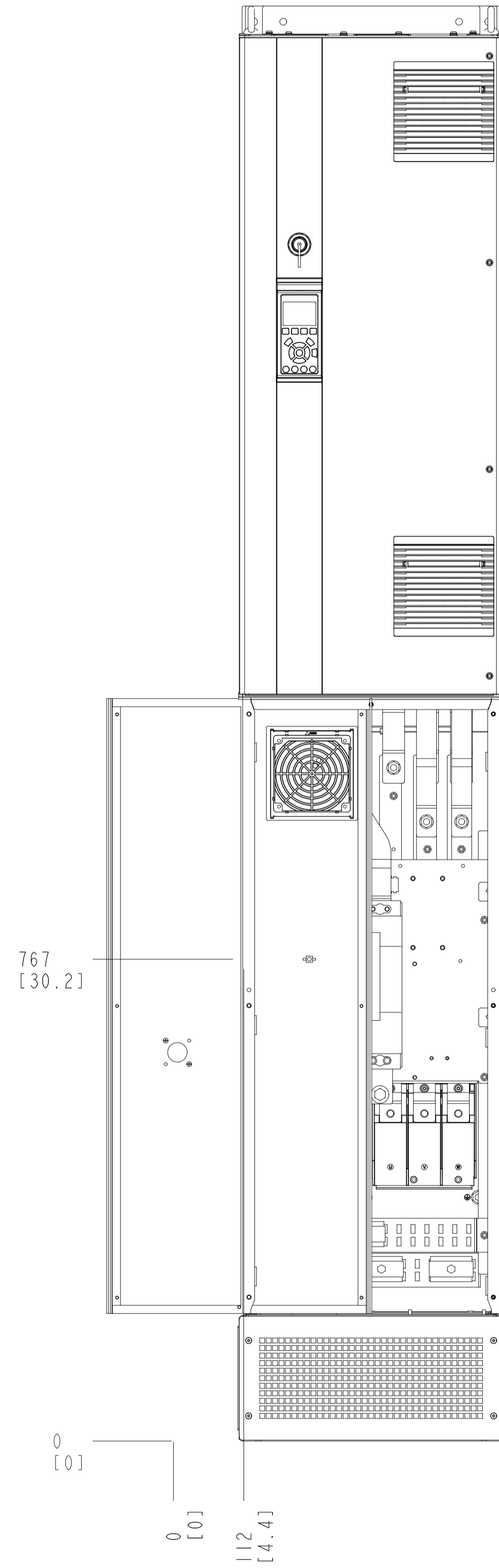
MAINS TERMINAL



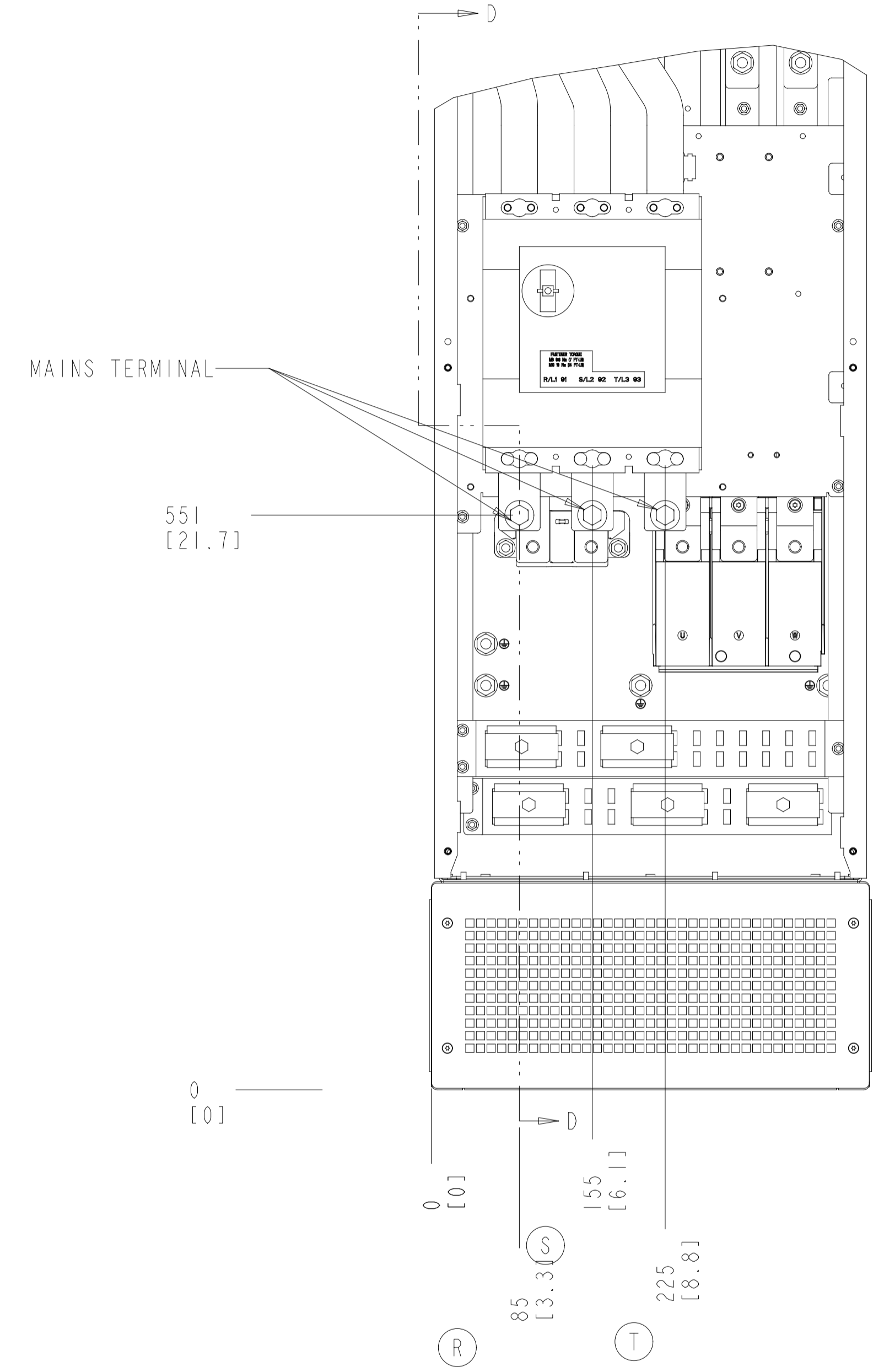
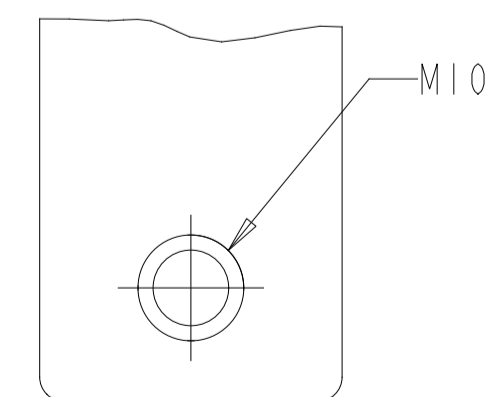
NOTES:
1. REFER SHEET 2 FOR BRAKE AND MOTOR TERMINAL DETAILS

CIRCUIT BREAKER

SECTION D-D MAINS TERMINALS



MAINS TERMINAL SCALE 1.000

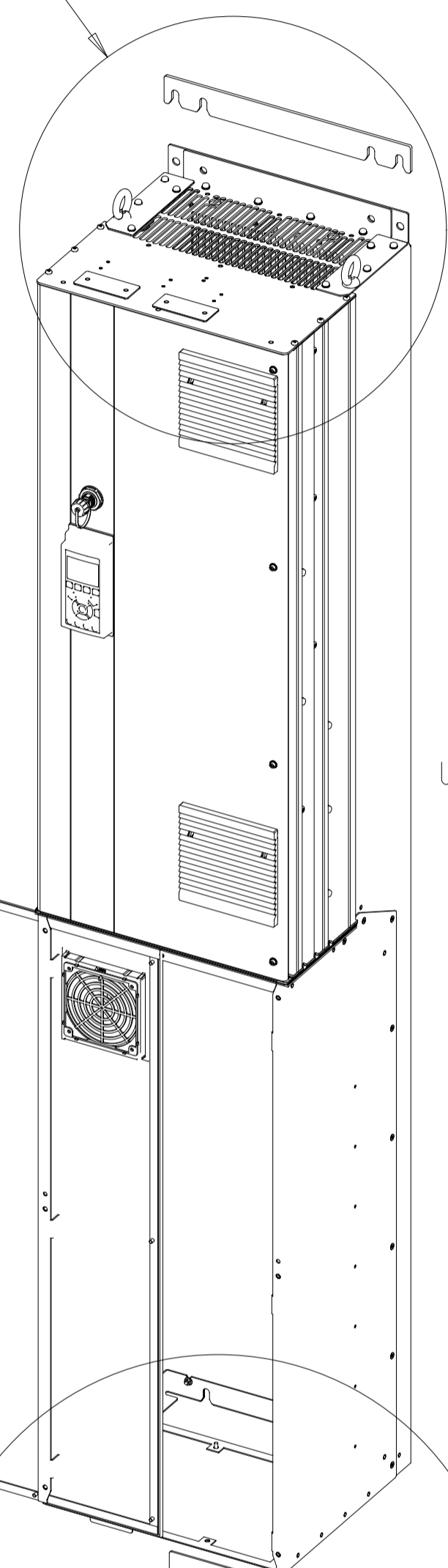


NOTES:

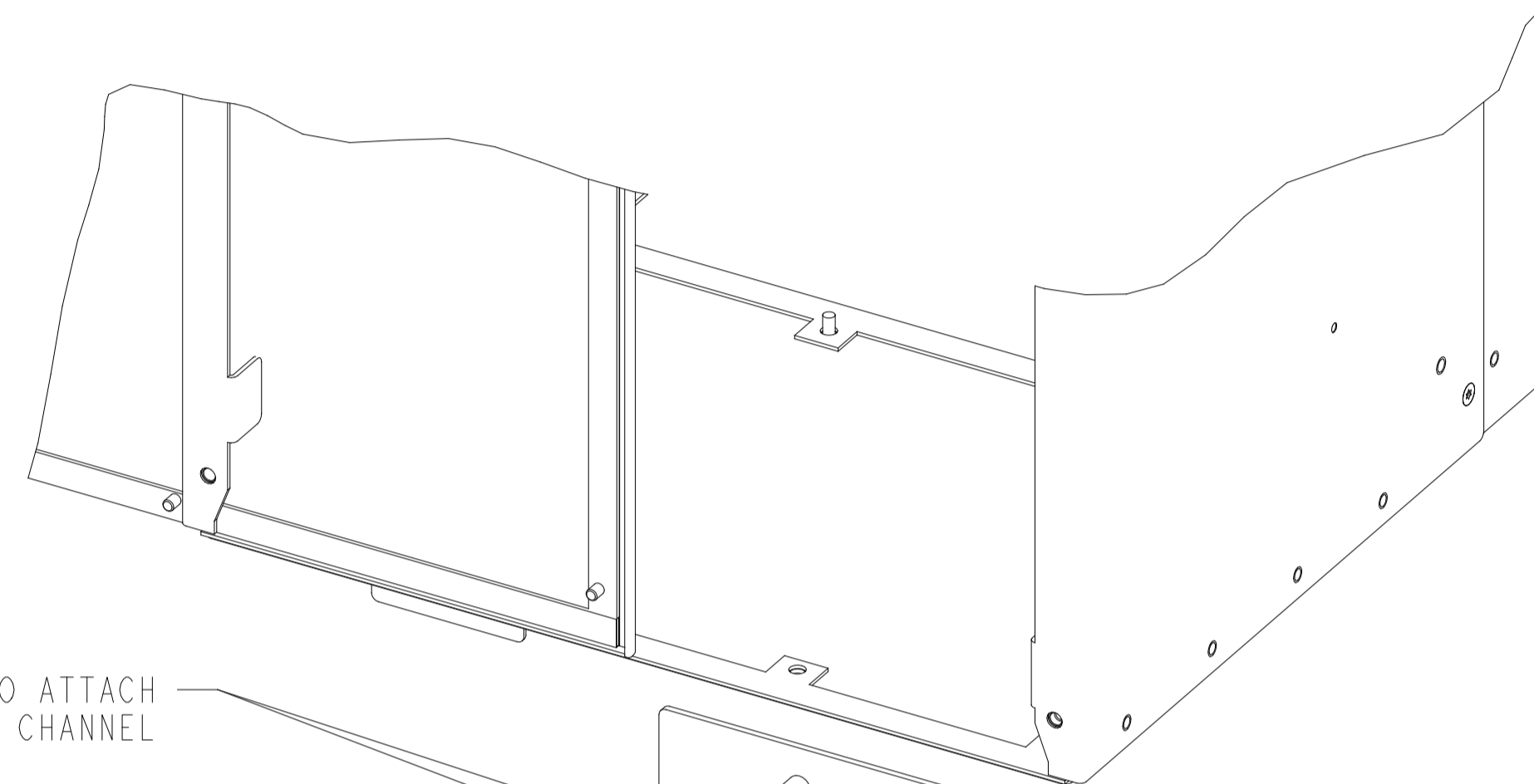
- REFER SHEET 2 FOR BRAKE AND MOTOR TERMINAL DETAILS

PEDESTAL INSTALLATION

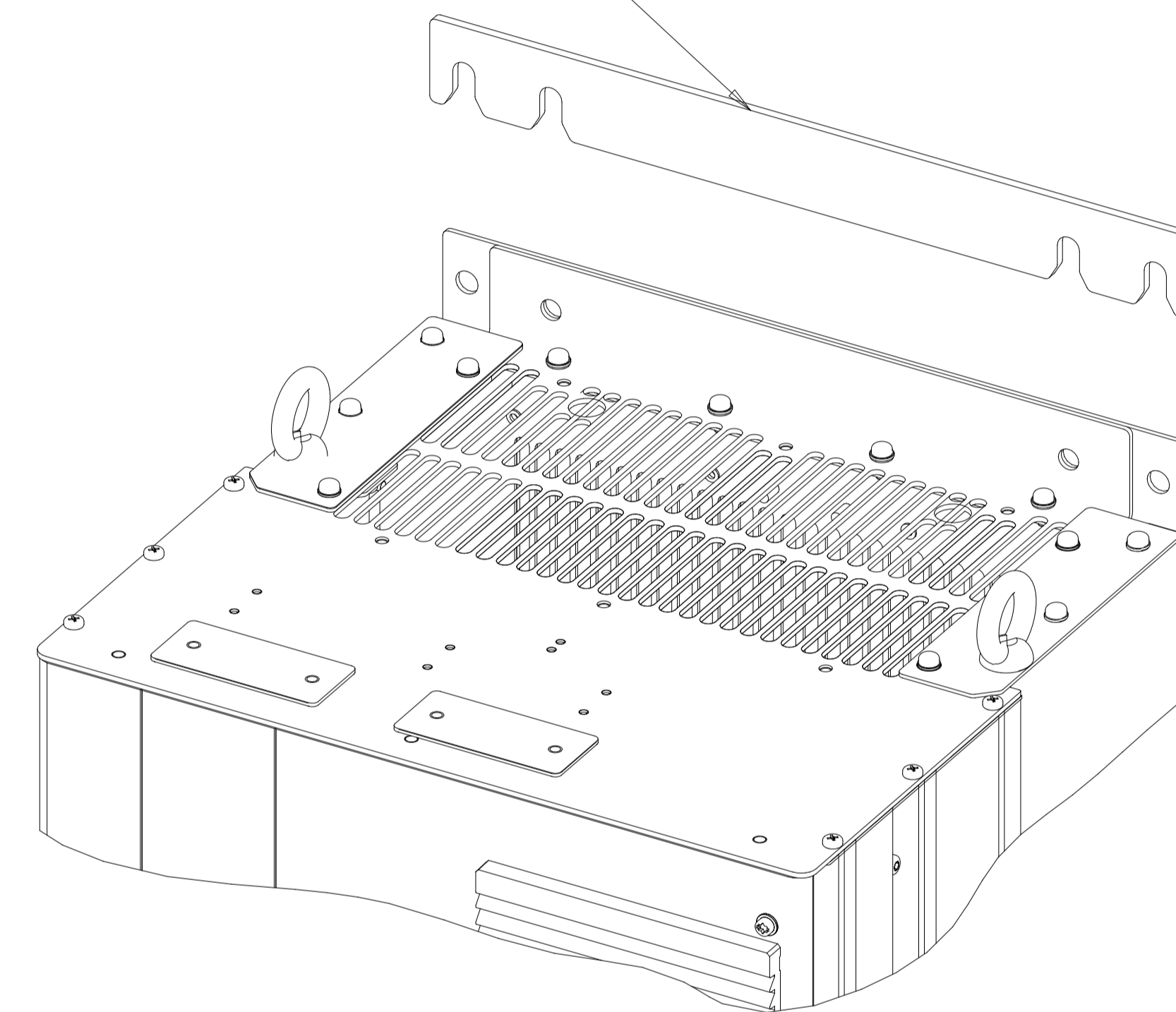
SEE DETAIL C



USE (2) 26516 M10 NUTS TO ATTACH
PEDESTAL TO BRIVE BACK CHANNEL

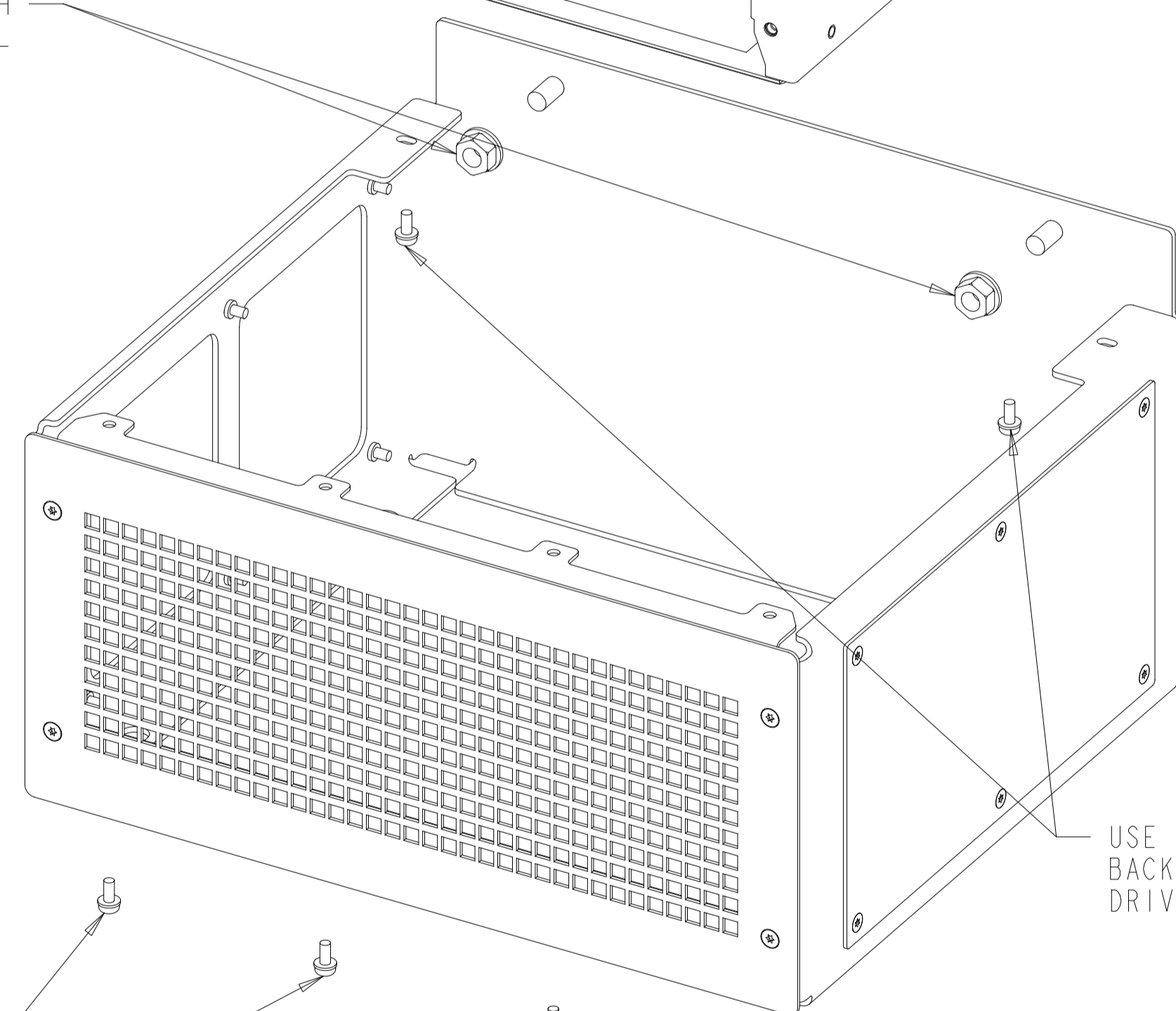


SLIDE PEDESTAL WALL SPACER BEHIND
TOP DRIVE MOUNTING FLANGE BEFORE
ATTACHING ENCLOSURE TO WALL



DETAIL C
SCALE 0.400

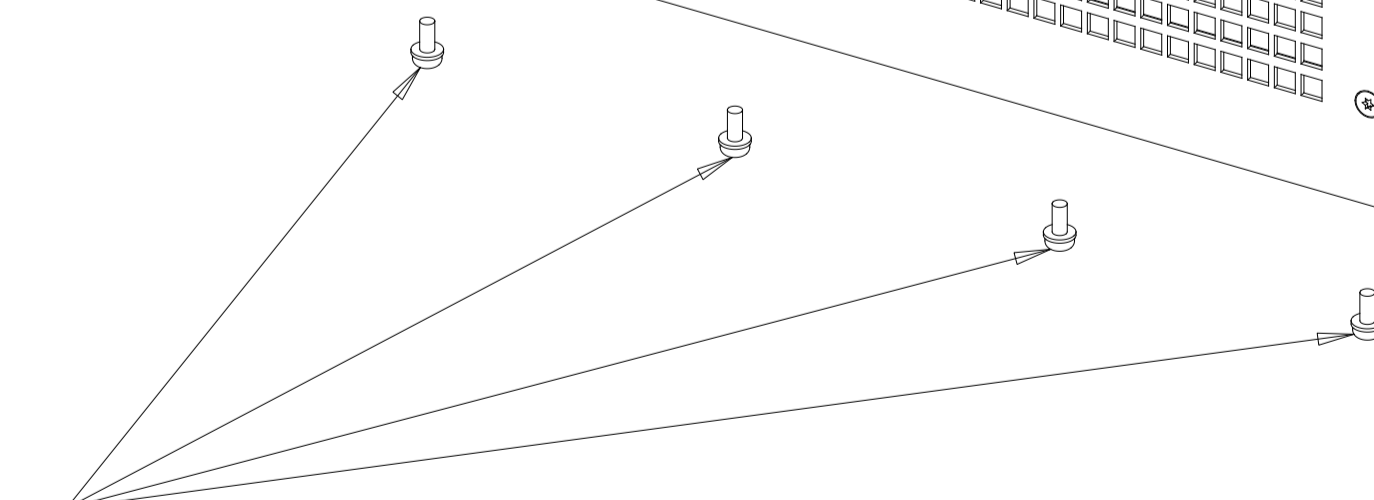
USE (2) 681X9143 M5 SCREWS THROUGH
BACK PEDESTAL FLANGE INTO PEDESTAL
DRIVE MOUNTING BRACKET



SEE DETAIL B

USE (4) 681X9143 M5 SCREWS THROUGH
FRONT PEDESTAL FLANGE INTO FRONT
GLAND PLATE MOUNTING HOLES

DETAIL B
SCALE 0.400



NOTES:

- 1) GLAND PLATE MUST BE INSTALLED BEFORE PEDESTAL
- 2) SEE PAGE 1 FOR FLOOR MOUNTING DIMENSIONS

THE TABLES BELOW ARE USED TO DETERMINE THE FRAME SIZE FOR A GIVEN POWER AND VOLTAGE RATING, WITH A CIRCUIT BREAKER, CONTACTOR OR DISCONNECT + CONTACTOR.

- 1) IDENTIFY THE POWER IN NORMAL OVERLOAD (N.O.) OR HIGH OVERLOAD (H.O.), KILOWATTS (KW) OR HORSEPOWER (HP).
 - 2) READ DOWN THE COLUMN TO THE ROW WITH THE CORRECT VOLTAGE TO IDENTIFY THE FRAME SIZE.
- THIS DRAWING IS FOR D8H FRAMES,

THE TABLE BELOW CAN BE USED TO DETERMINE THE FRAME SIZE IF THE SPECIFIC MODEL/TYPE CODE WITH A CIRCUIT BREAKER, CONTACTOR OR DISCONNECT + CONTACTOR IS KNOWN.

003 003 003 003

KW RATED DRIVES												
KW HIGH OVERLOAD	75	90	110	150	110	132	160	200	250	315	315	
KW NORMAL OVERLOAD	90	110	150	160	132	160	200	250	315	355	400	
208V / 230V	D8H	D8H	D8H	D8H								
400V		D8H			D8H	D8H	D8H	D8H	D8H			
500V					D8H	D8H	D8H	D8H	D8H	D8H		
525V	D8H	D8H			D8H	D8H	D8H	D8H	D8H			
690V		D8H			D8H	D8H	D8H	D8H	D8H			D8H

003 003 003 003

HORSEPOWER RATED DRIVES									
HP HIGH OVERLOAD	75	100	125	150	200	250	300	350	350
HP NORMAL OVERLOAD	100	125	150	200	250	300	350	400	450
208V	D8H	D8H	D8H	D8H					
460V			D8H	D8H	D8H	D8H	D8H		D8H
575V		D8H	D8H	D8H	D8H	D8H	D8H	D8H	

PLATFORM	VOLTAGE	MODEL/TYPECODE	FRAME(IP21/IP54)
HVAC	T2	FC-102N90KT2	D8H
		FC-102N110KT2	
		FC-102N150KT2	
		FC-102N160KT2	
	T4	FC-102N200T4	
		FC-102N250T4	
		FC-102N315T4	
	T7	FC-102N200T7	
		FC-102N250T7	
FC-102N315T7			
FC-102N400T7			
AQUA	T2	FC-102N90KT2	
		FC-102N110KT2	
		FC-102N150KT2	
	T4	FC-102N160KT2	
		FC-202N200T4	
		FC-202N250T4	
	T7	FC-202N315T4	
		FC-202N200T7	
		FC-202N250T7	
		FC-202N315T7	
	AUTOMATION	T2	FC-202N400T7
			FC-302N75KT2
FC-302N90KT2			
T5		FC-302N110KT2	
		FC-302N150KT2	
		FC-302N160T5	
T7		FC-302N200T5	
		FC-302N250T5	
		FC-302N160T7	
	FC-302N200T7		
		FC-302N250T7	
		FC-302N315T7	

TITLE			
INSTALLATION DRAWING, D8H, IP21/54			
SIZE	MODEL	REV	
D	P454-1042	003	
SCALE	DRAWING NO.	SHEET	
1:000	177R0493	6 OF 6	