

8

7

6

5

4

3

2

1

- NOTICE -

THIS DOCUMENT CONTAINS PROPRIETARY INFORMATION OF DANFOSS DRIVES. IT IS LOANED BY DANFOSS DRIVES SUBJECT TO THE CONDITIONS THAT IT AND THE INFORMATION EMBODIED THEREIN SHALL BE USED ONLY FOR RECORD AND REFERENCE PURPOSES. SHALL NOT BE USED OR CAUSED TO BE USED IN ANY WAY PREJUDICIAL TO THE INTERESTS OF DANFOSS DRIVES. SHALL NOT BE REPRODUCED OR COPIED IN WHOLE OR IN PART OR DISCLOSED TO ANYONE WITHOUT THE DIRECT WRITTEN PERMISSION OF DANFOSS DRIVES, AND SHALL BE RETURNED UPON REQUEST.

REVISION HISTORY

REV	ECN NUMBER	ENTRY BY	DATE
001	INITIAL RELEASE	ASK	08/30/10
002	HPI1054	DH	05/18/11

VLT COOLING:

THE VLT FREQUENCY CONVERTER MUST BE INSTALLED VERTICALLY WITH THE MINIMUM 9" [225 MM] FREE SPACE ABOVE THE ENCLOSURE.

ALL IP21/UL NEMA TYPE 1 AND IP54/ NEMA UL TYPE 12 UNITS MAY BE MOUNTED SIDE BY SIDE, WITH NO MINIMUM CLEARANCE.

FAILURE TO REMOUNT CABINET FLOOR GLAND PLATES WILL HAVE A NEGATIVE INFLUENCE ON THE UNIT'S INTERNAL COOLING CAPACITY AND CAN CAUSE TRIP FAULTS.



BACK CHANNEL COOLING:

STANDARD COOLING CONFIGURATION IS WITH THE INTAKE THROUGH THE BASE CABLE PLINTH AND EXHAUST OUT THE TOP OF THE ENCLOSURE.

OPTIONAL COOLING CONFIGURATION (\*) IS WITH THE INTAKE THROUGH THE LOWER REAR OF THE CABINET AND EXHAUST OUT THE UPPER REAR. (CONSULT FACTORY WHEN PLACING UNITS SIDE-BY-SIDE IN THIS CONFIGURATION).

EACH INVERTER AND RECTIFIER MODULE HAS DEDICATED COOLING DUCTWORK.

CENTER OF GRAVITY: REFERENCE ONLY, CONFIGURATION MAY SHIFT CG IN ALL THREE AXISES.

UNLESS OTHERWISE SPECIFIED INTERPRET DIM. AND TOL. PER ASME Y14.5M-1994 X±0.4 .XX±0.20 ≤±0.5 DIM. ARE IN MILLIMETERS WEIGHTS ARE IN KILOGRAMS THIRD ANGLE PROJECTION	PROPERTIES			 4401 N. BELL SCHOOL RD. LOVES PARK, ILLINOIS 61111 USA (815) 639-8600 FAX (815) 639-8000
	MATERIAL	N/A		
	FINISH	N/A		
	THICKNESS			
	APPROVALS	INITIALS	DATE	TITLE
	DRAWN	ASK	08/30/10	DRW. REF. MOUNTING/AIRFLOW, F8-F13
	CHECKED			SIZE D MODEL 177G2539 REV 002
	ENGR			SCALE 0.250 DRAWING NO. 177R0214 SHEET 1 OF 14

8

7

6

5

4

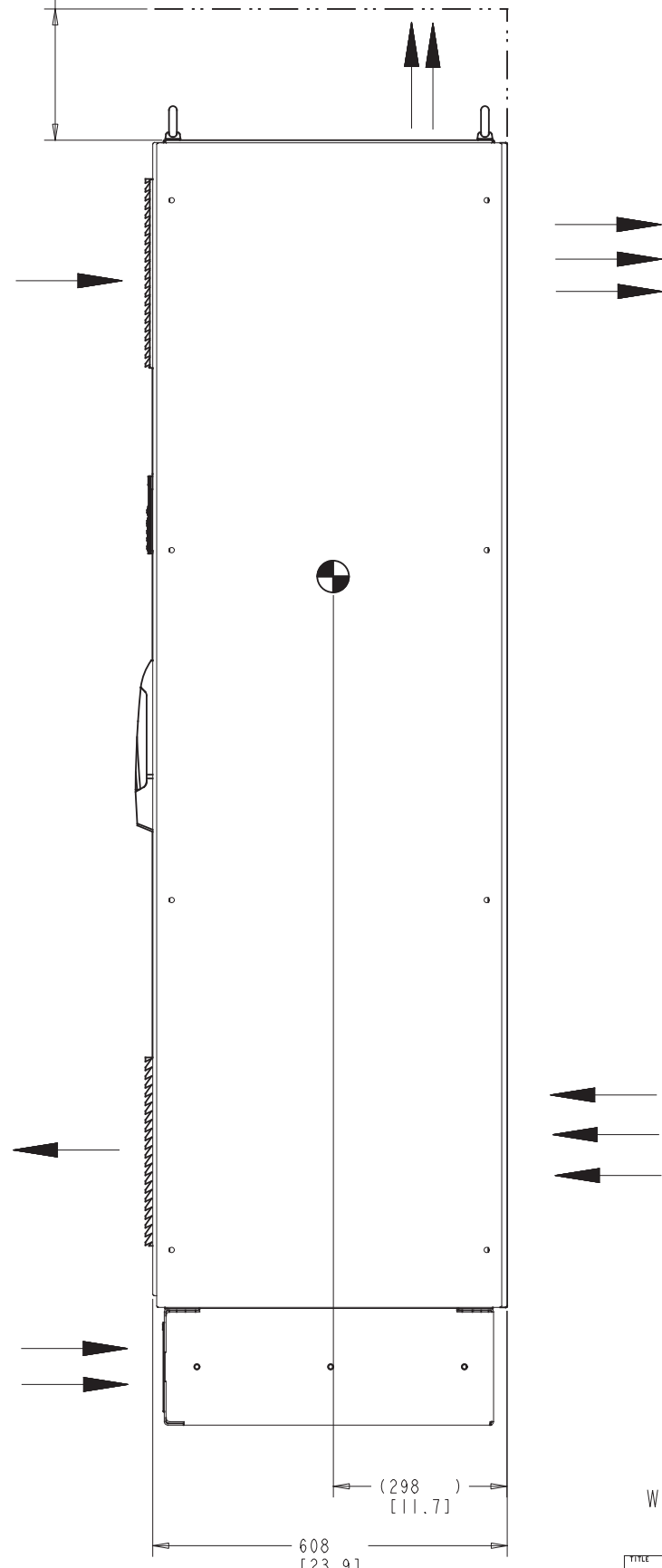
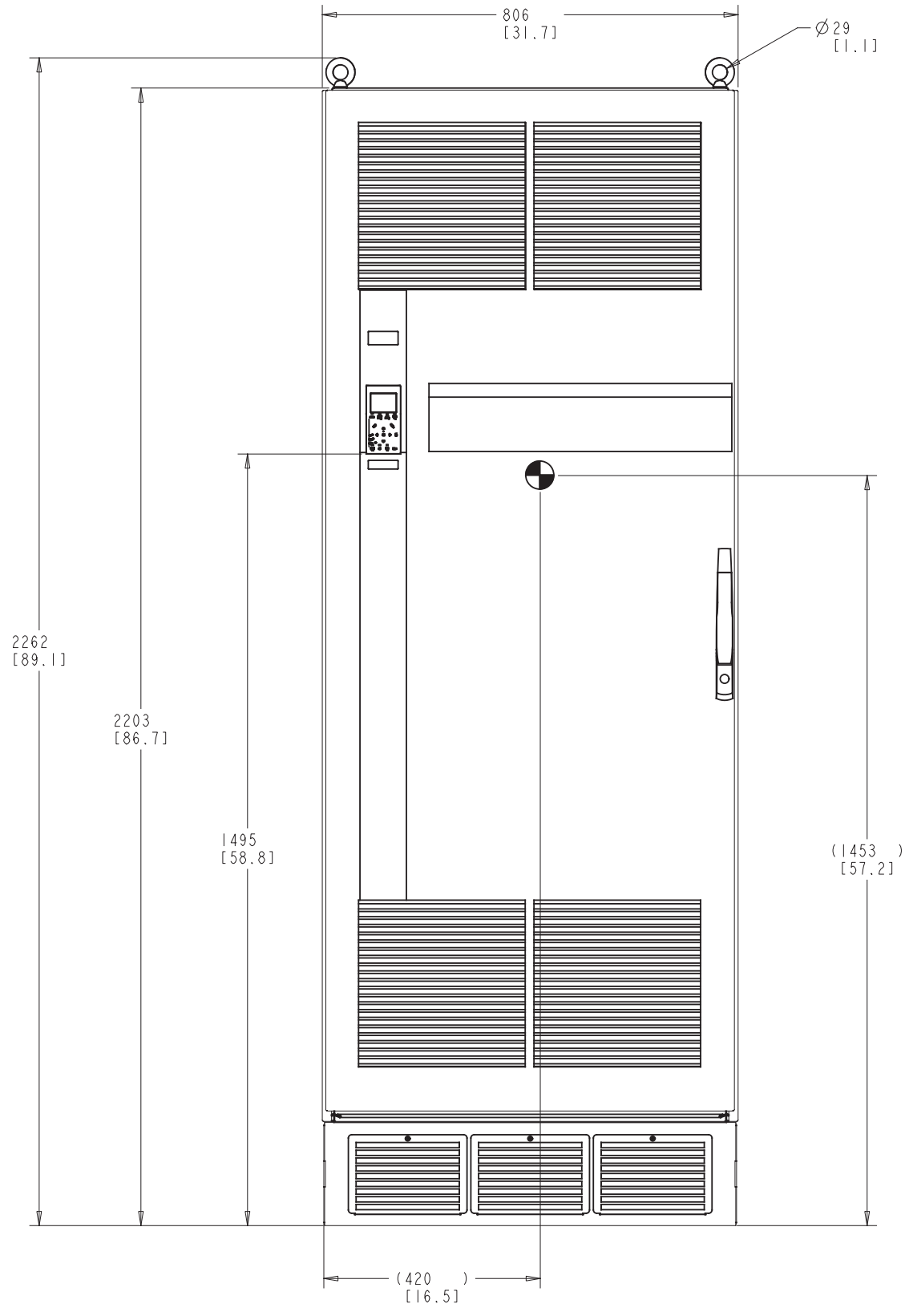
3

2

1

# F8 FRAME

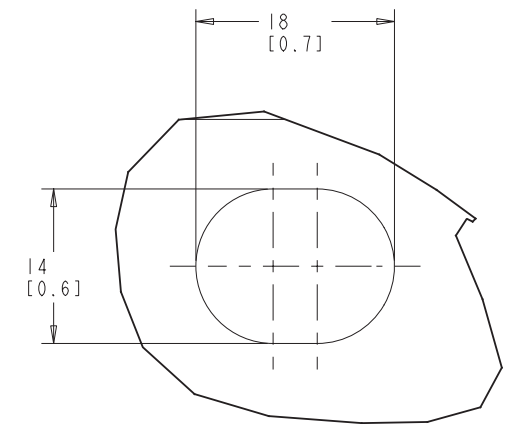
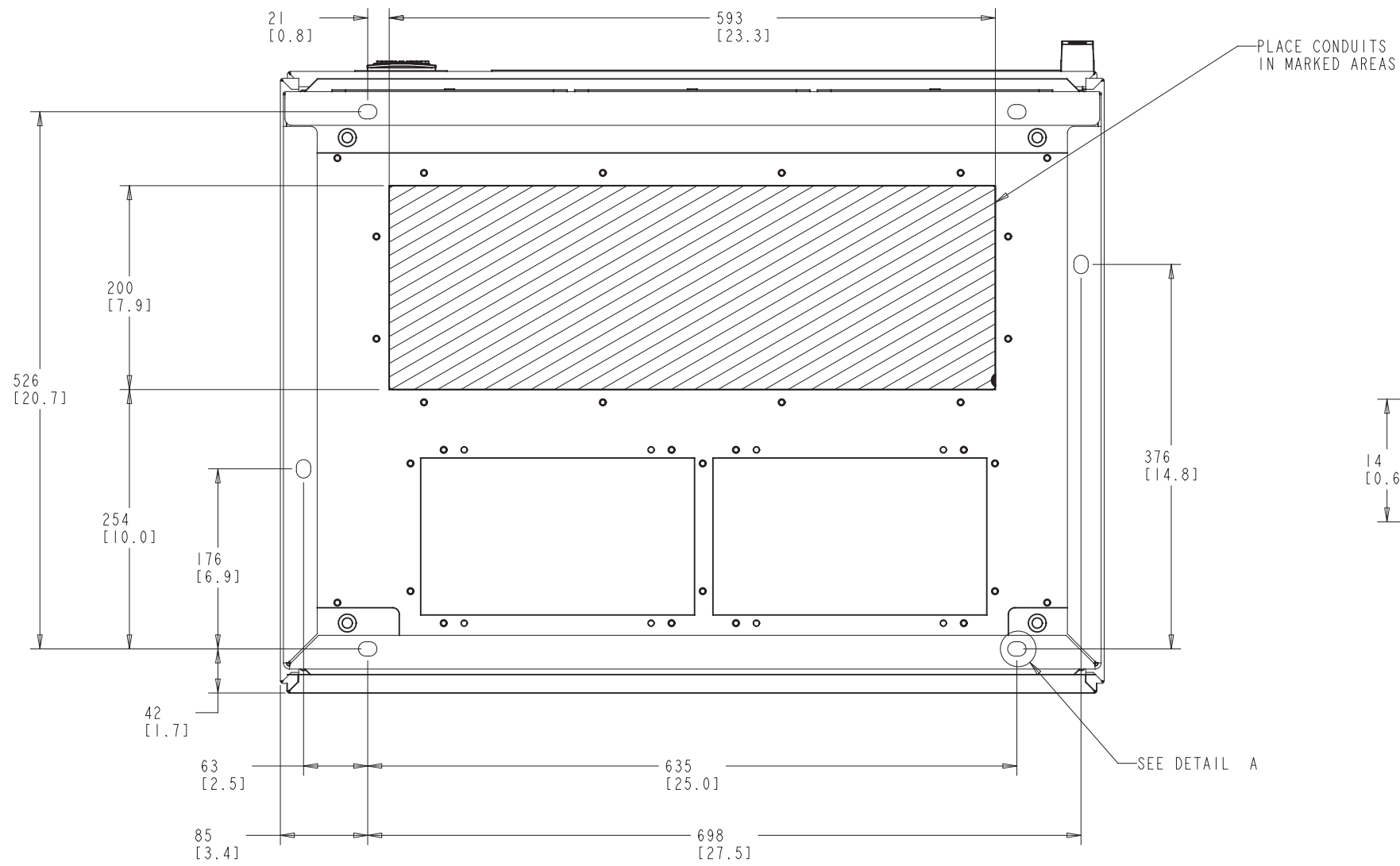
225  
[8.9]  
MINIMUM CLEARANCE  
FROM CEILING



WEIGHT: 440kg, 970 lb

TITLE			
DRW. REF. MOUNTING/AIRFLOW, F8-F13			
SIZE	MODEL	REV	
D	177G2539	002	
SCALE	DRAWING NO.	SHEET	
0.175	177R0214	2 OF 14	

# F8 FRAME



DETAIL A  
SCALE 3.000

TITLE			
DRW. REF. MOUNTING/AIRFLOW, F8-F13			
SIZE	MODEL	REV	
D	177G2539	002	
SCALE	DRAWING NO.	SHEET	
0.350	177R0214	3 OF 14	

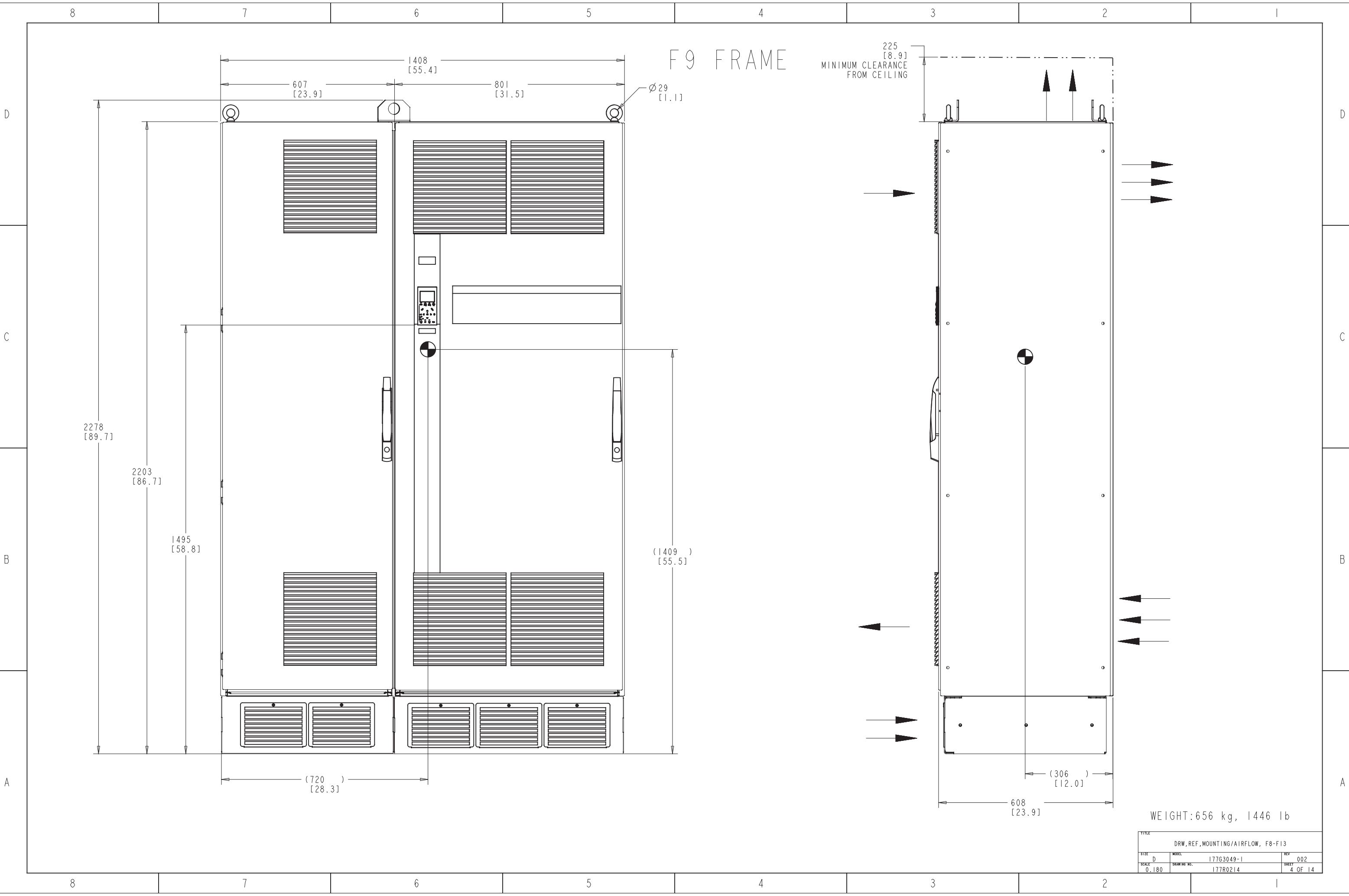
# F9 FRAME

225 [8.9]  
MINIMUM CLEARANCE  
FROM CEILING

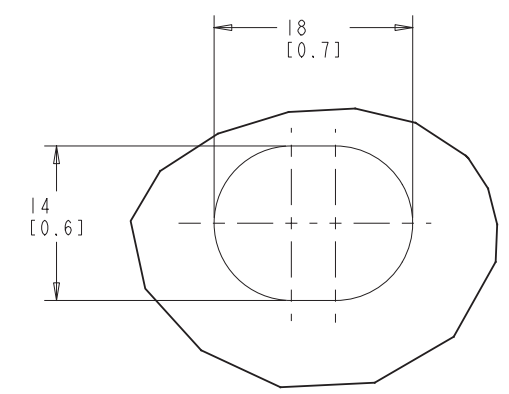
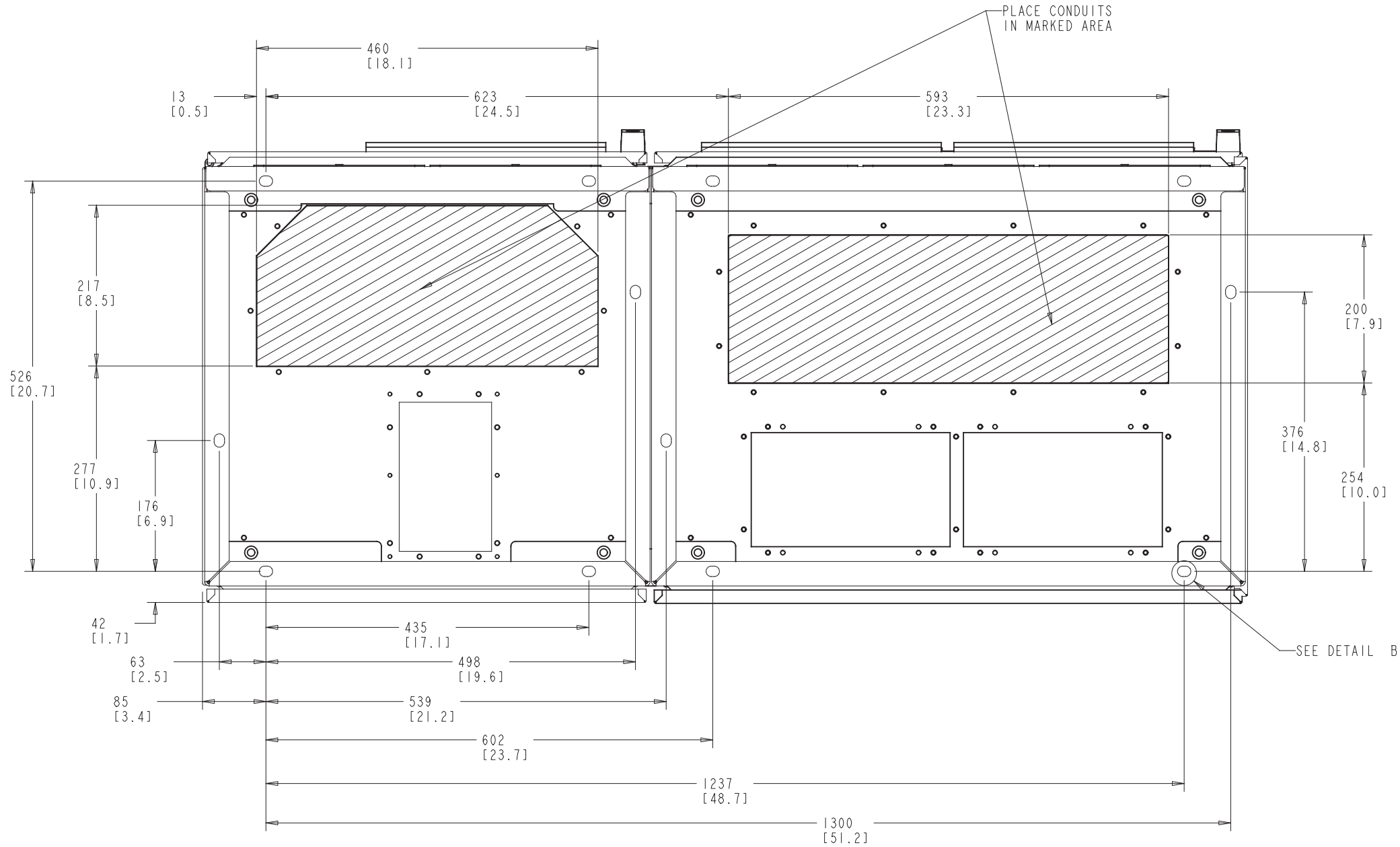
Ø29 [1.1]

WEIGHT: 656 kg, 1446 lb

TITLE			
DRW. REF. MOUNTING/AIRFLOW, F8-F13			
SIZE	MODEL	REV	
D	177G3049-1	002	
SCALE	DRAWING NO.	SHEET	
0.180	177R0214	4 OF 14	



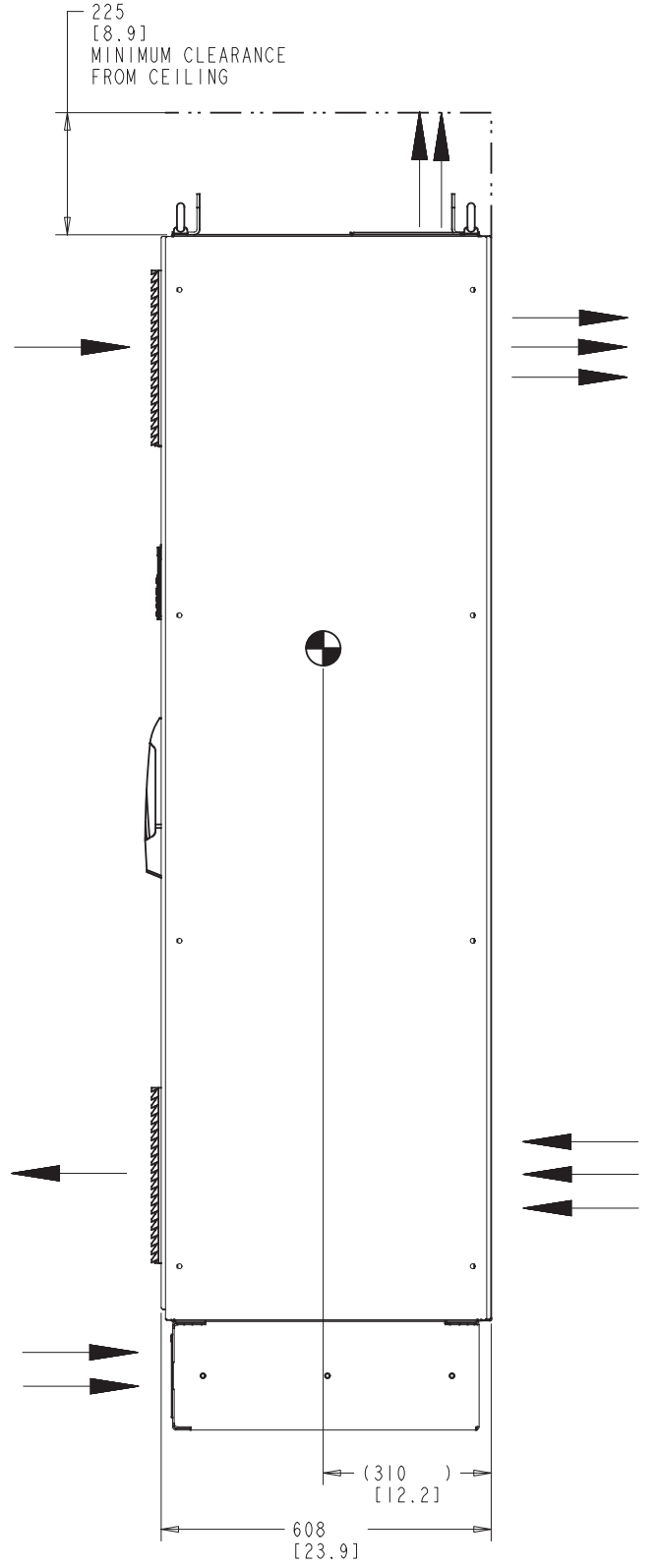
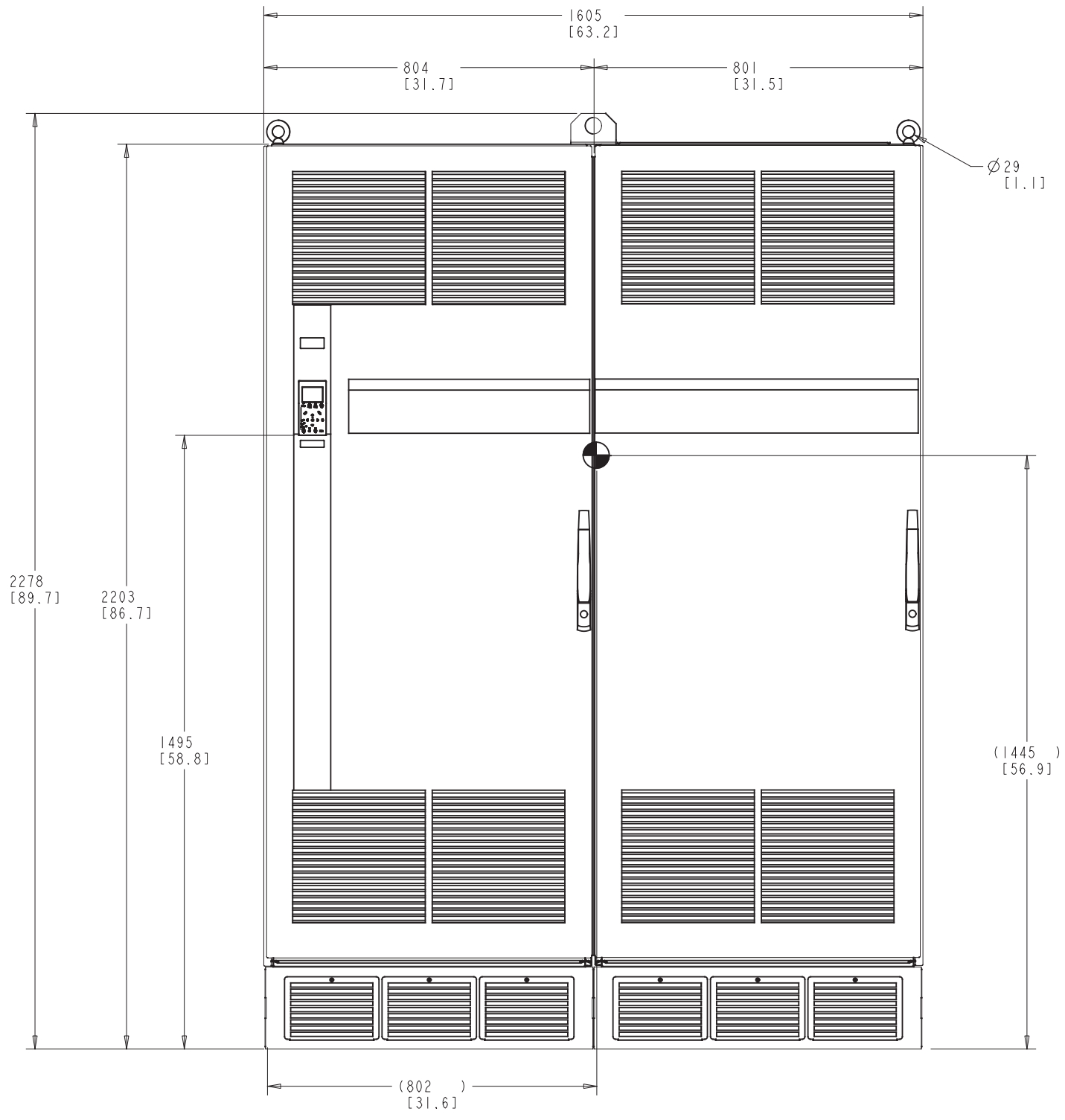
# F9 FRAME



DETAIL B  
SCALE 3.000

TITLE			
DRW. REF. MOUNTING/AIRFLOW, F8-F13			
SIZE	MODEL	REV	
D	177G3049-1	002	
SCALE	DRAWING NO.	SHEET	
0.300	177R0214	5 OF 14	

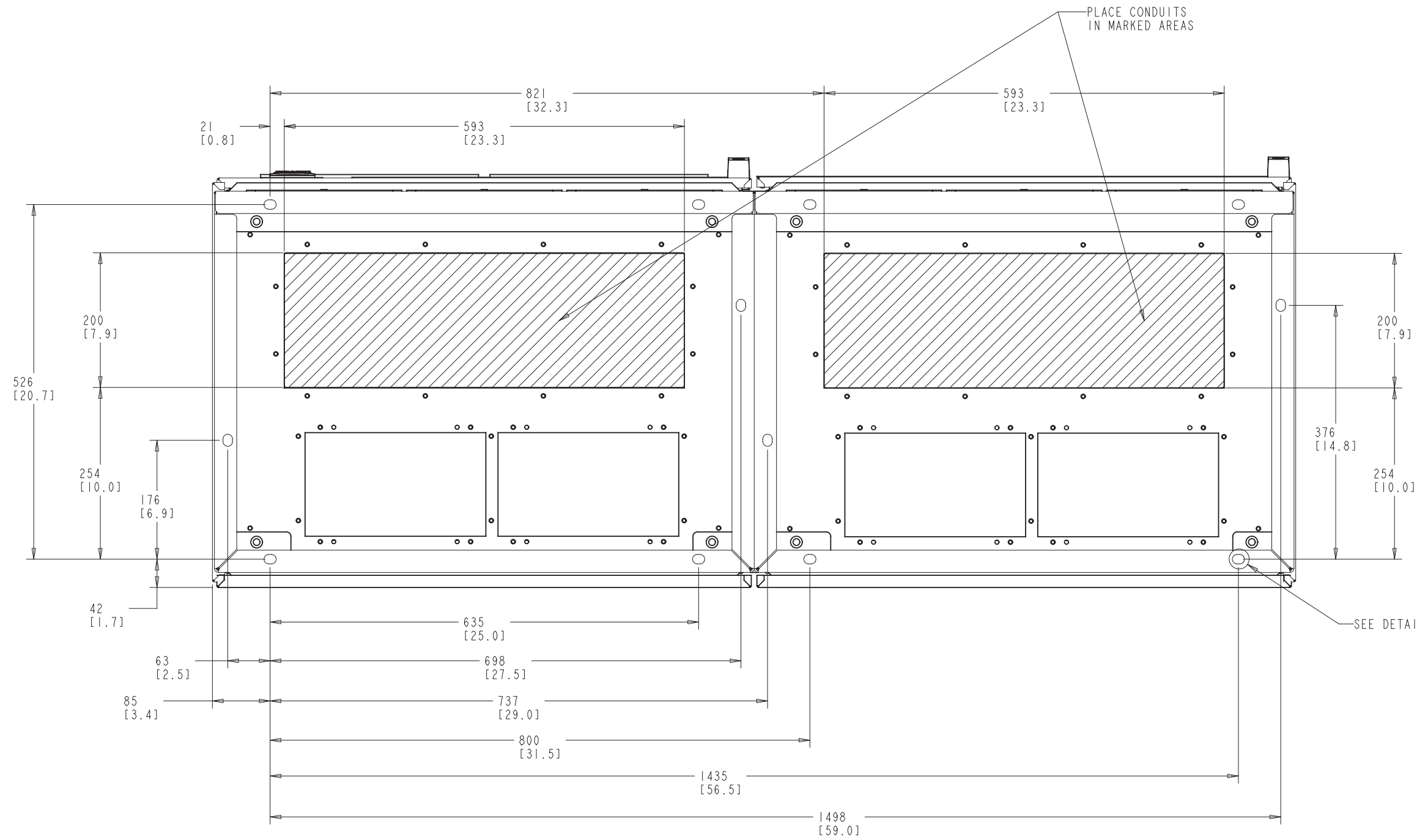
# F10 FRAME



WEIGHT: 880 kg, 1940 lb

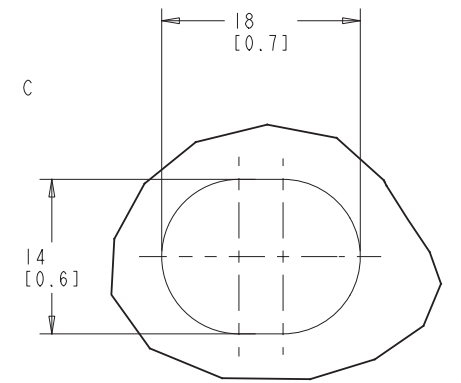
TITLE			
DRW. REF. MOUNTING/AIRFLOW, F8-F13			
SIZE	MODEL	REV	
D	177G3052-2	002	
SCALE	DRAWING NO.	SHEET	
0.150	177R0214	6 OF 14	

# F10 FRAME



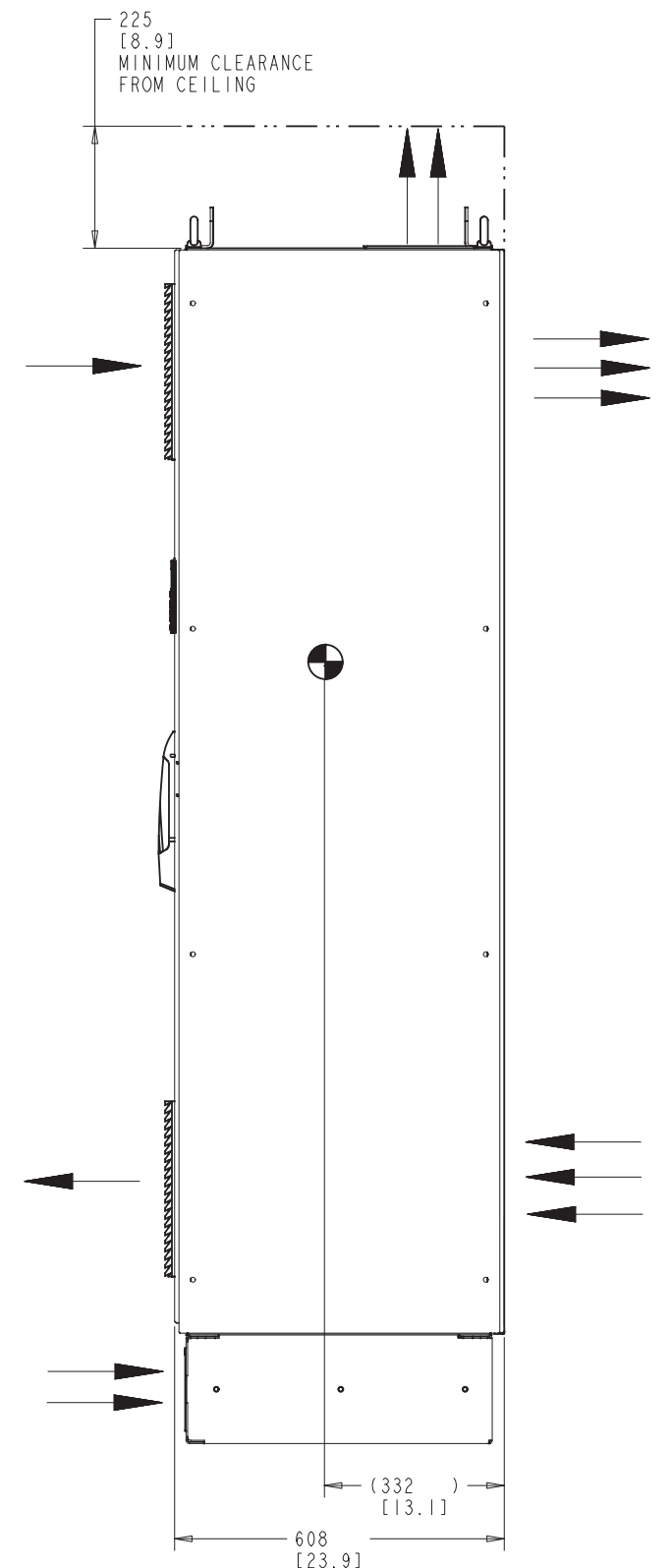
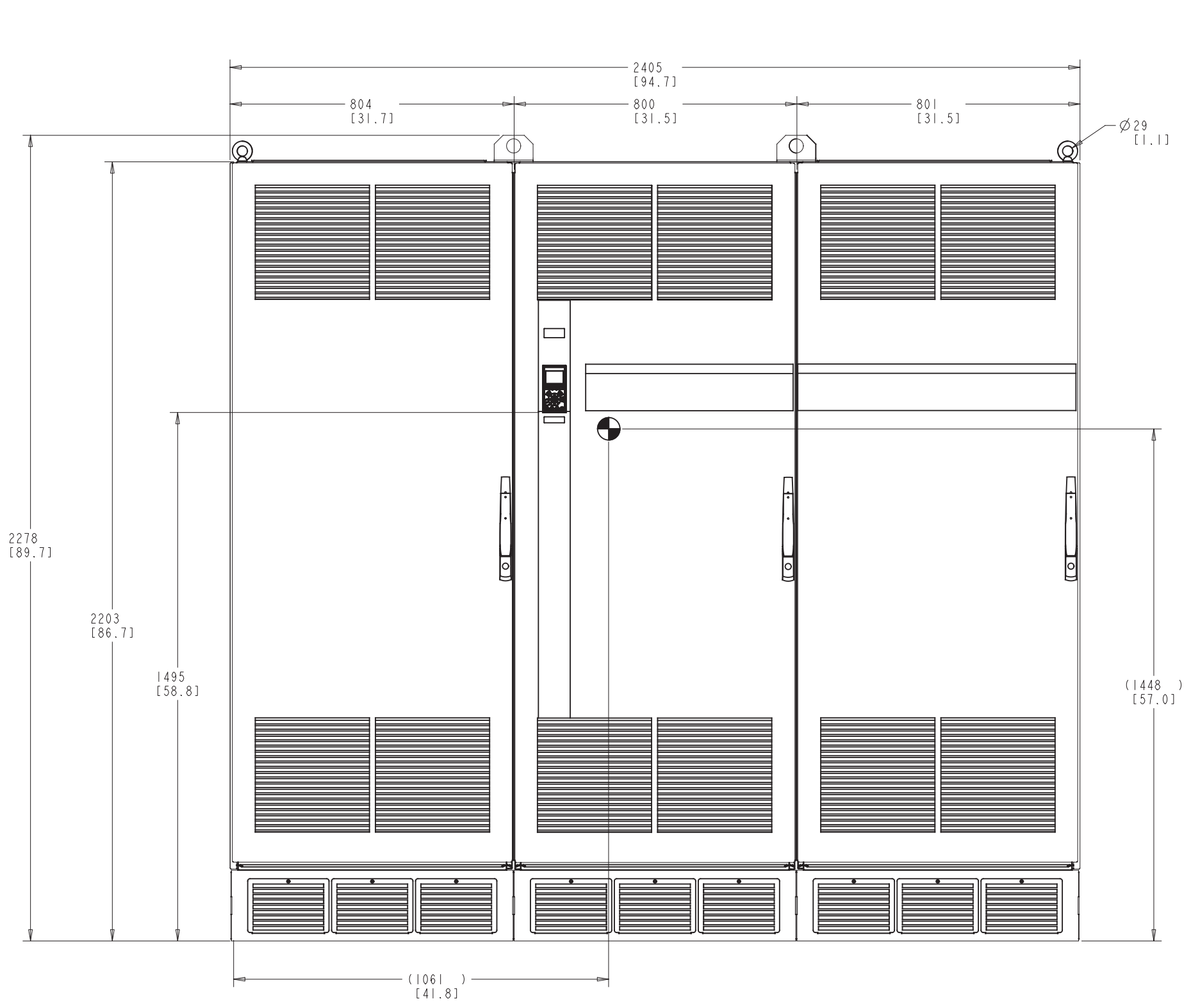
PLACE CONDUITS  
IN MARKED AREAS

SEE DETAIL C



TITLE			
DRW. REF. MOUNTING/AIRFLOW, F8-F13			
SIZE	MODEL	REV	
D	177G3052-2	002	
SCALE	DRAWING NO.	SHEET	
0.300	177R0214	7 OF 14	

# F11 FRAME

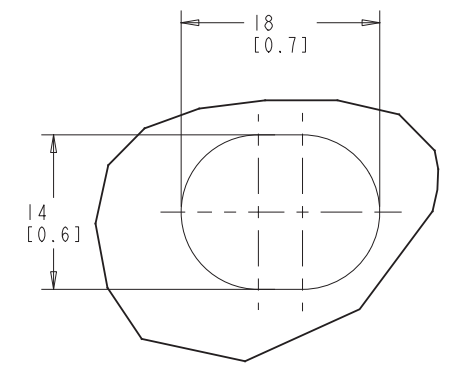
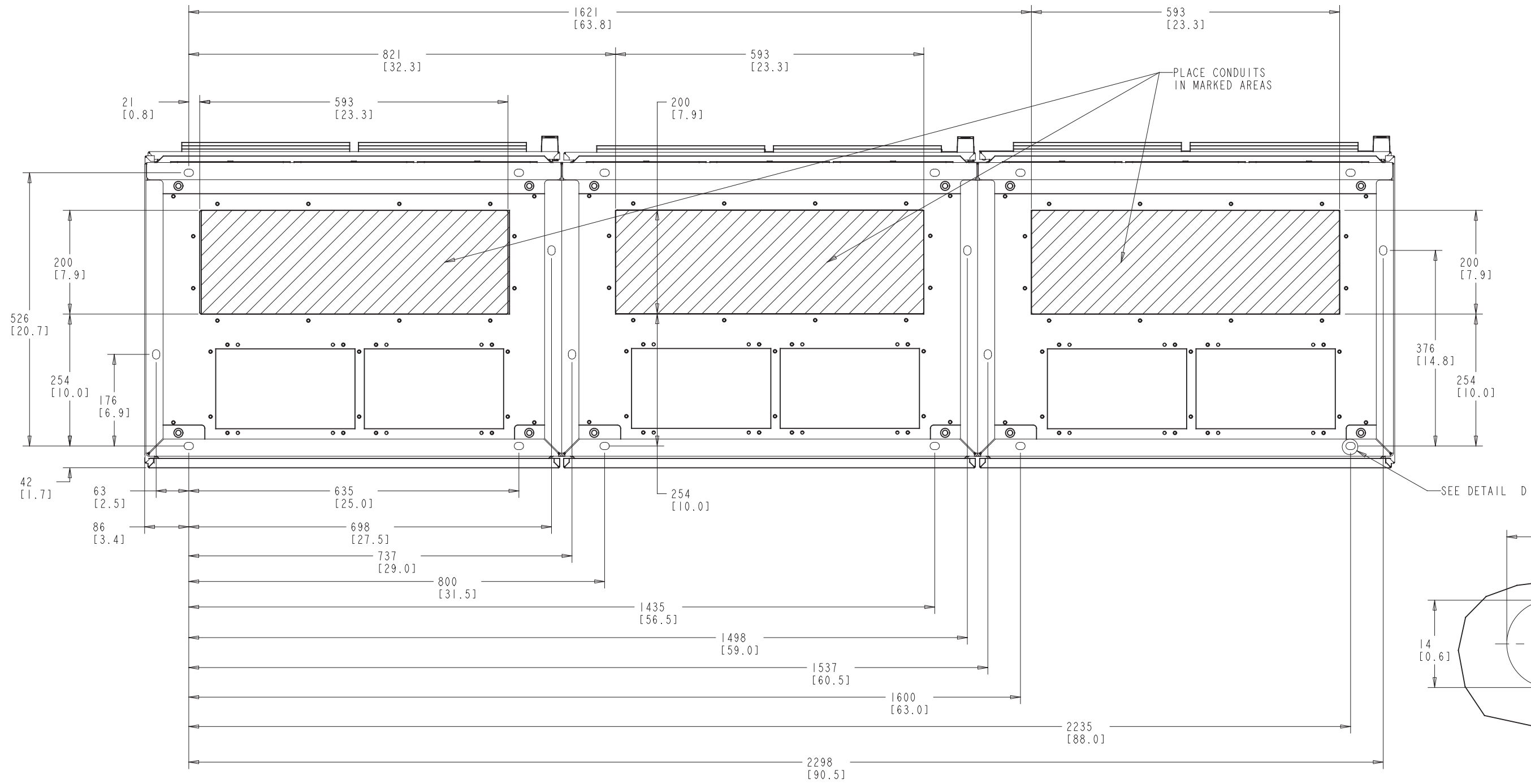


WEIGHT: 1096 kg, 2416 lb

TITLE			
DWG. REF. MOUNTING/AIR FLOW, F8-F13			
SIZE	MODEL	REV	
D	177G3051-1	002	
SCALE	DRAWING NO.	SHEET	
0.150	177R0214	8 OF 14	



# F11 FRAME



TITLE			
DWG. REF. MOUNTING/AIR FLOW, F8-F13			
SIZE	MODEL	REV	
D	177G3051-1	002	
SCALE	DRAWING NO.	SHEET	
0.250	177R0214	9 OF 14	

# F12 FRAME

225  
[8.9]  
MINIMUM CLEARANCE  
FROM CEILING

∅29  
[1.1]

2006  
[79.0]

804  
[31.7]

1202  
[47.3]

2278  
[89.7]

2203  
[86.7]

1495  
[58.9]

(1436 )  
[56.5]

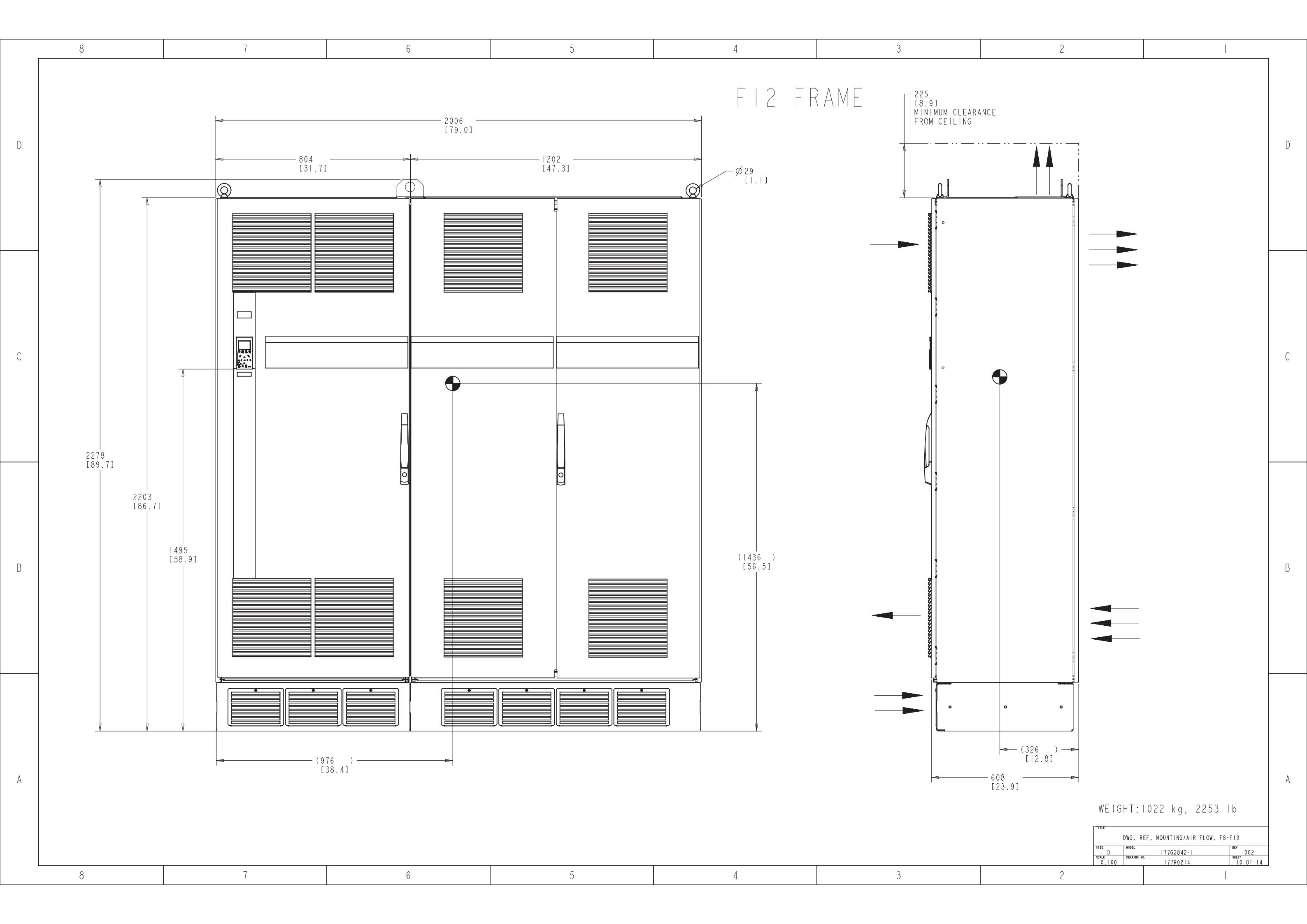
(976 )  
[38.4]

(326 )  
[12.8]

608  
[23.9]

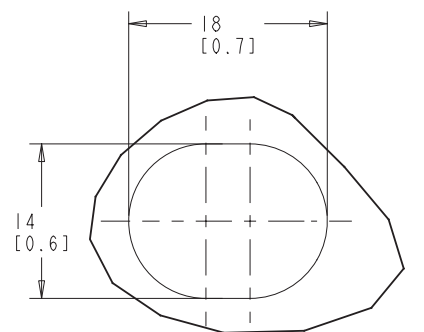
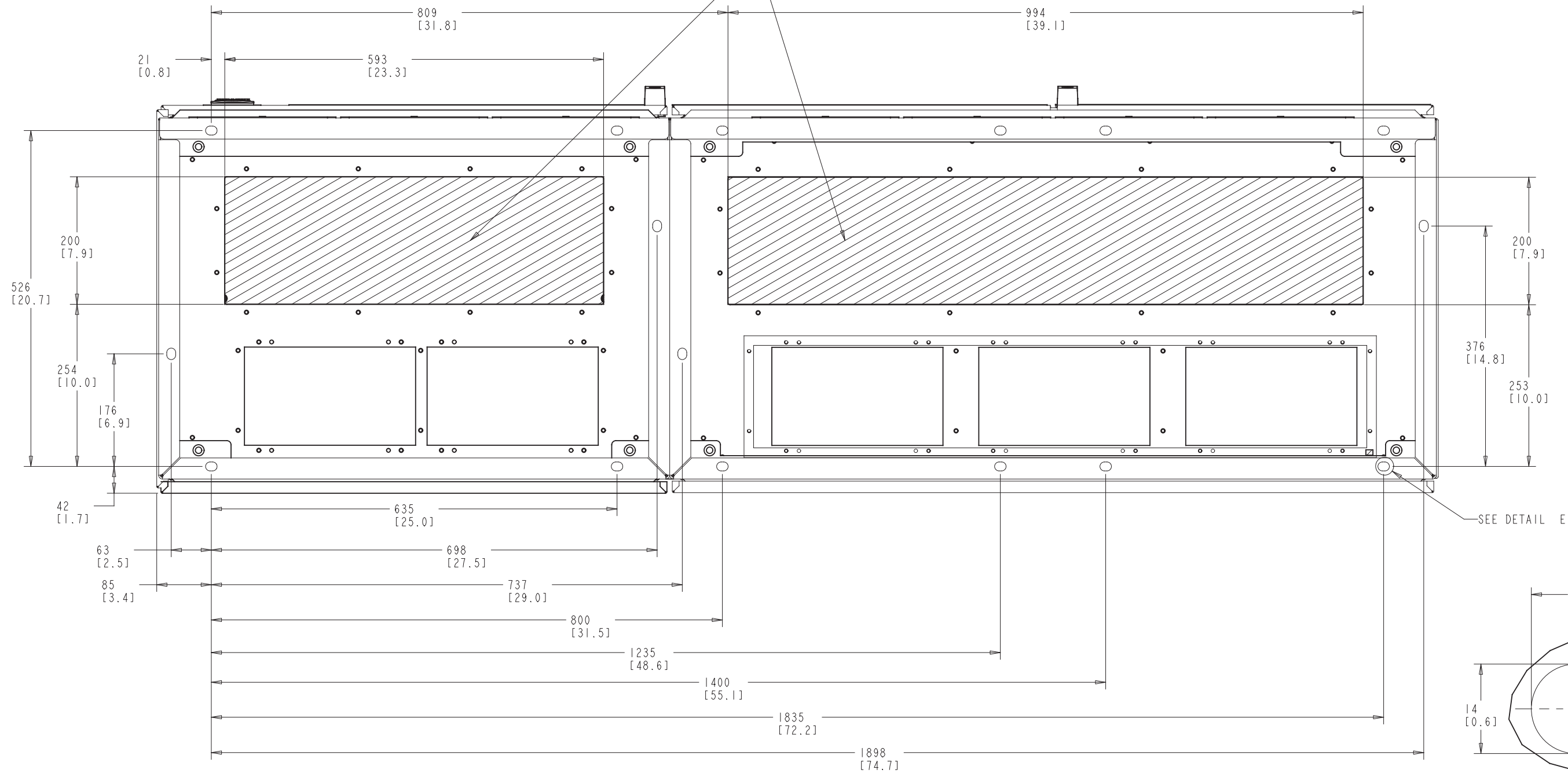
WEIGHT: 1022 kg, 2253 lb

TITLE			
DWG. REF. MOUNTING/AIR FLOW, F8-F13			
SIZE	MODEL	REV	
D	177G2842-1	002	
SCALE	DRAWING NO.	SHEET	
0.160	177R0214	10 OF 14	



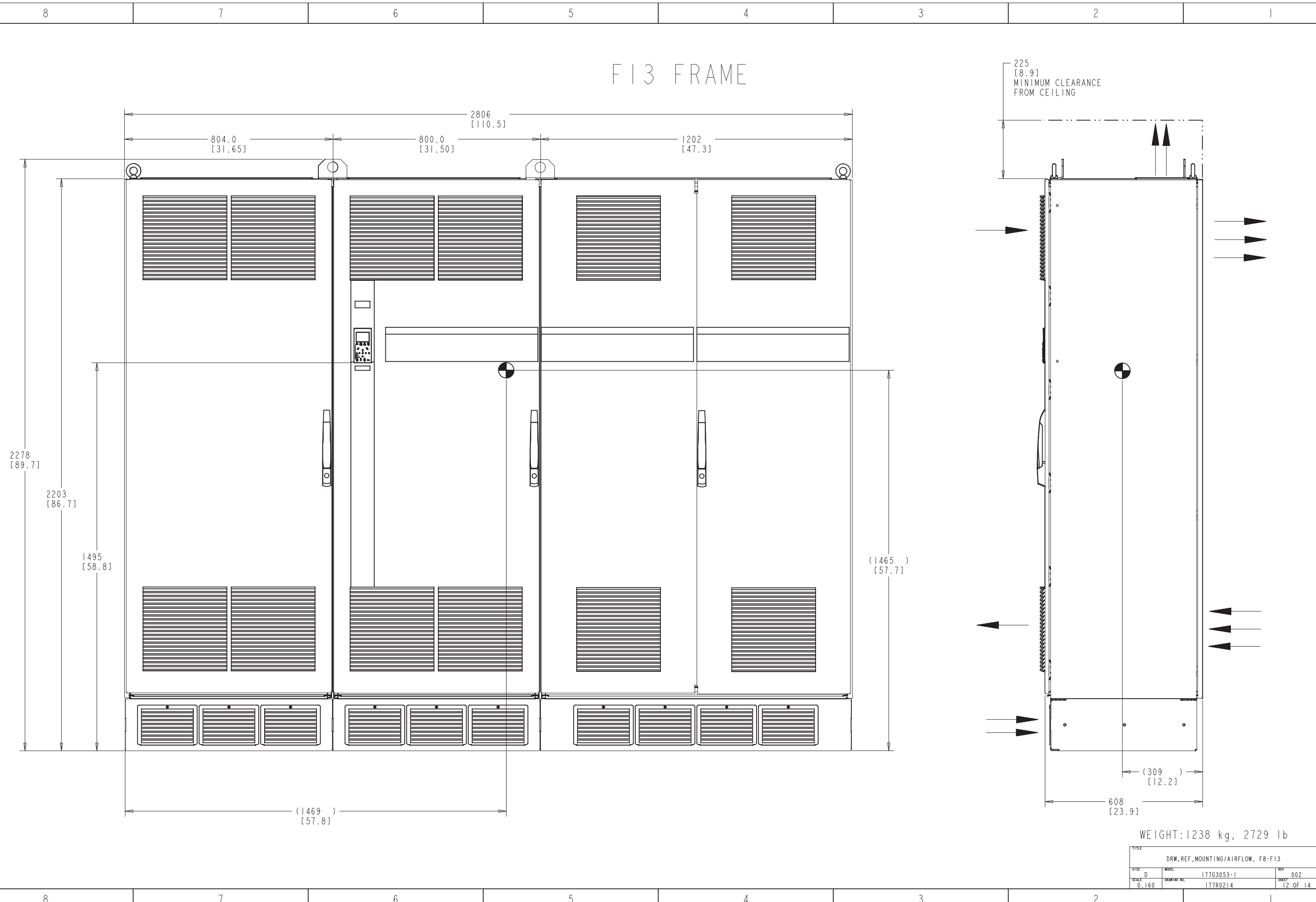
# F12 FRAME

PLACE CONDUITS  
IN MARKED AREAS



TITLE			
DWG. REF. MOUNTING/AIR FLOW, F8-F13			
SIZE	MODEL	REV	
D	177G2842-1	002	
SCALE	DRAWING NO.	SHEET	
0.300	177R0214	11 OF 14	

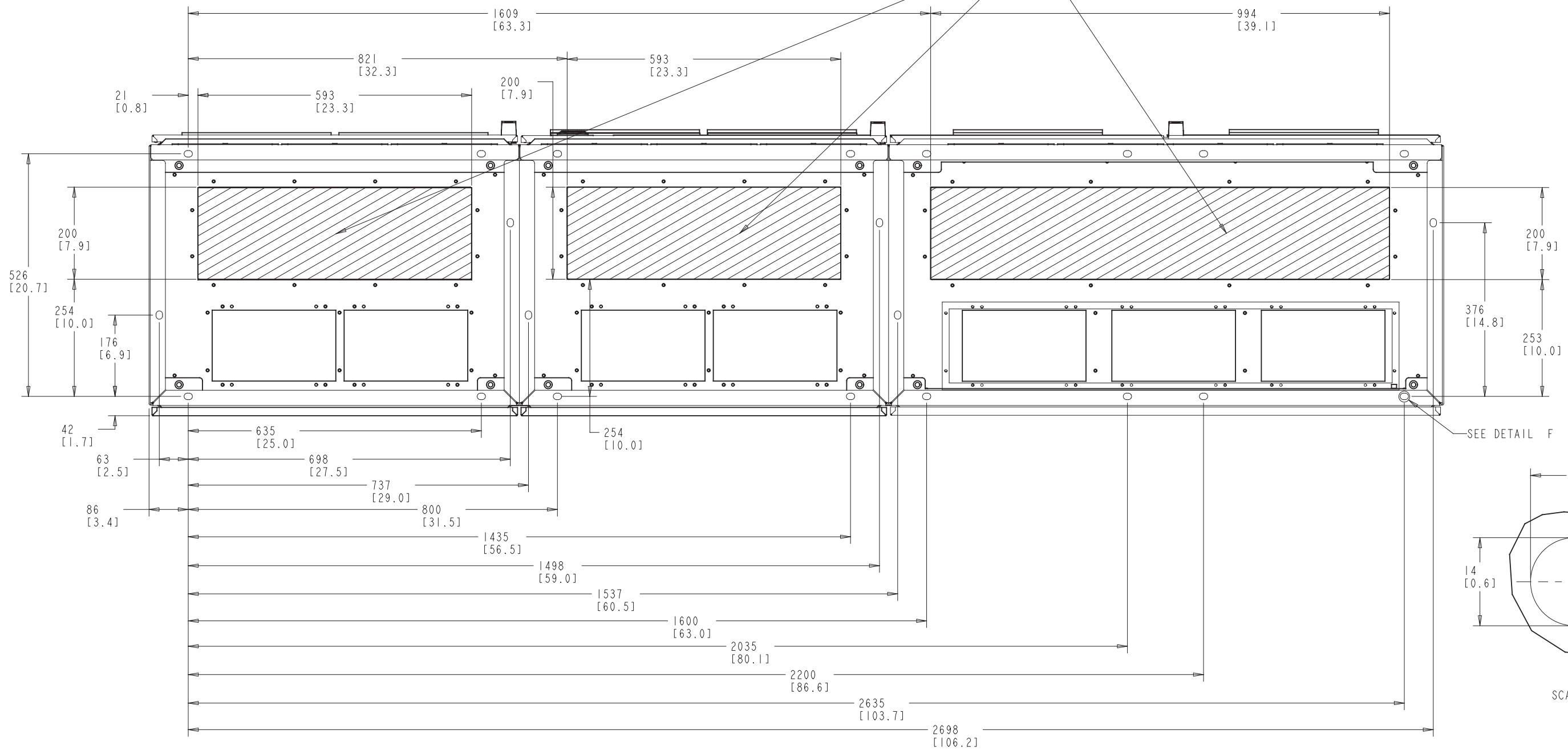
# F13 FRAME



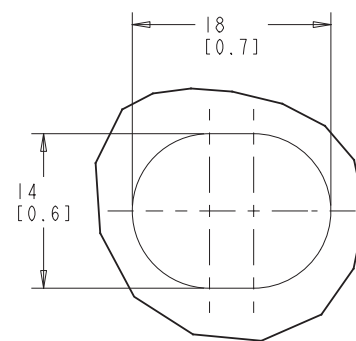
TITLE			
DRW. REF. MOUNTING/AIRFLOW, F8-F13			
SIZE	MODEL	REV	
D	177G3053-1	002	
SCALE	DRAWING NO.	SHEET	
0.160	177R0214	12 OF 14	

# F13 FRAME

PLACE CONDUITS  
IN MARKED AREAS



SEE DETAIL F



DETAIL F  
SCALE 3.000

TITLE			
DRW. REF. MOUNTING/AIRFLOW, F8-F13			
SIZE	MODEL	REV	
D	177G3053-1	002	
SCALE	DRAWING NO.	SHEET	
0.220	177R0214	13 OF 14	

8

7

6

5

4

3

2

1

D

D

C

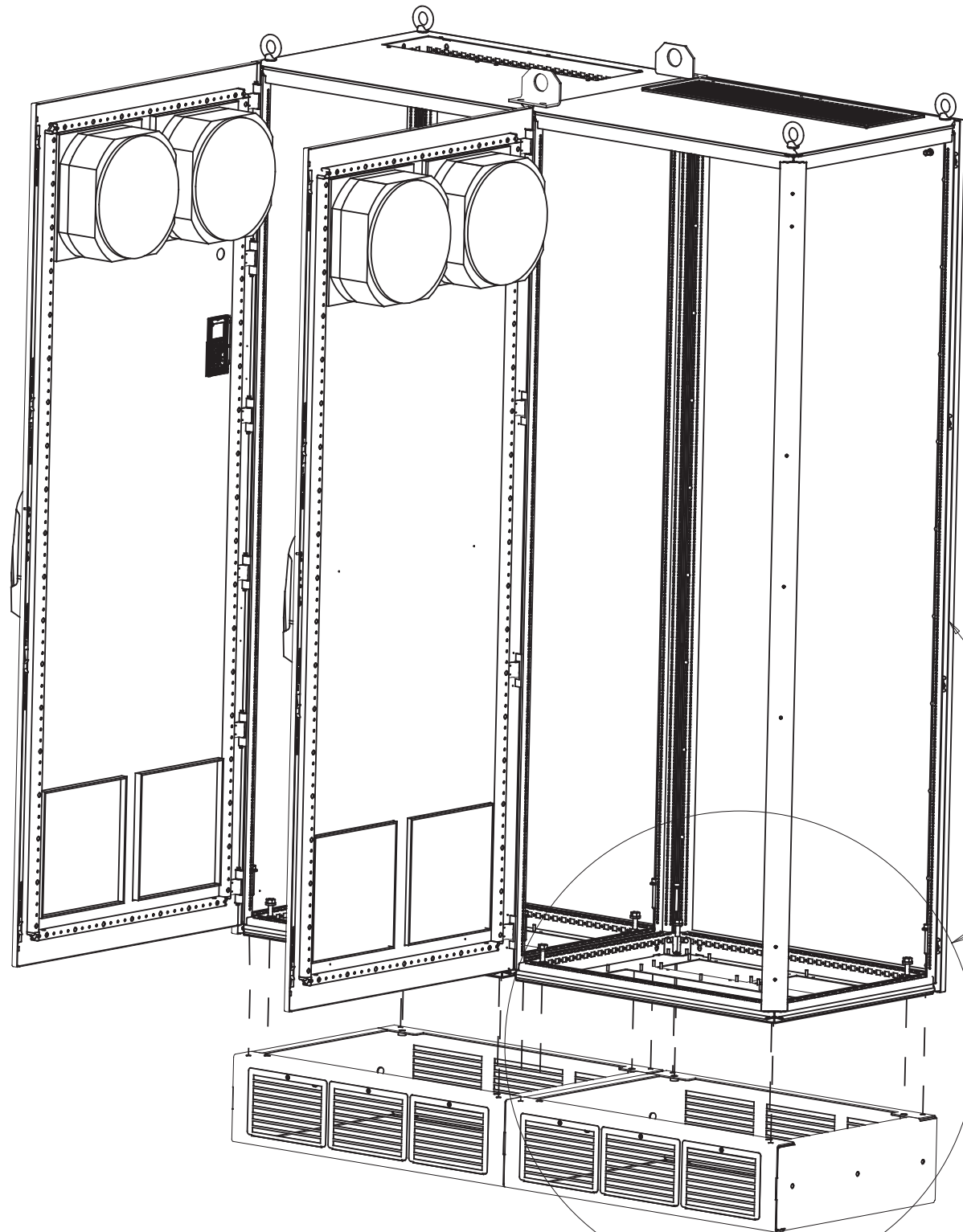
C

B

B

A

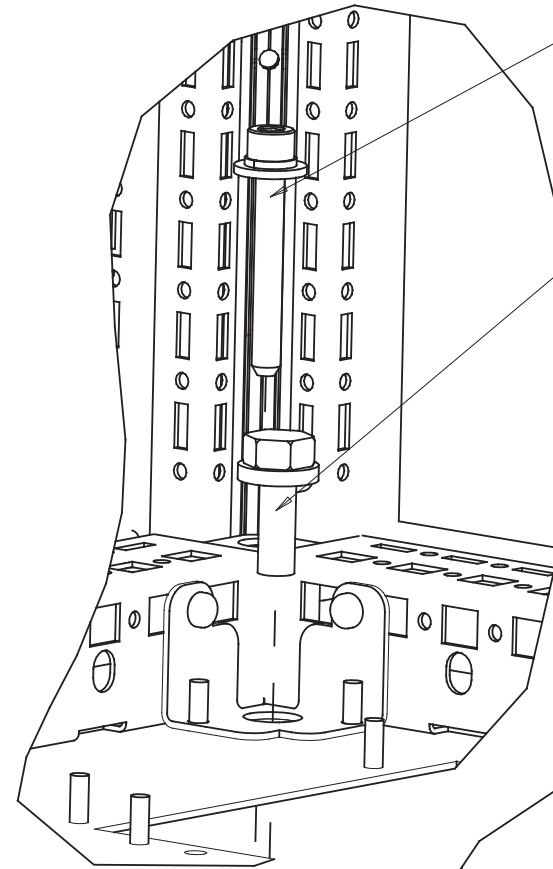
A



SCALE 0.150

SIDE PANEL AND INTERNAL COMPONENTS REMOVED FOR CLARITY

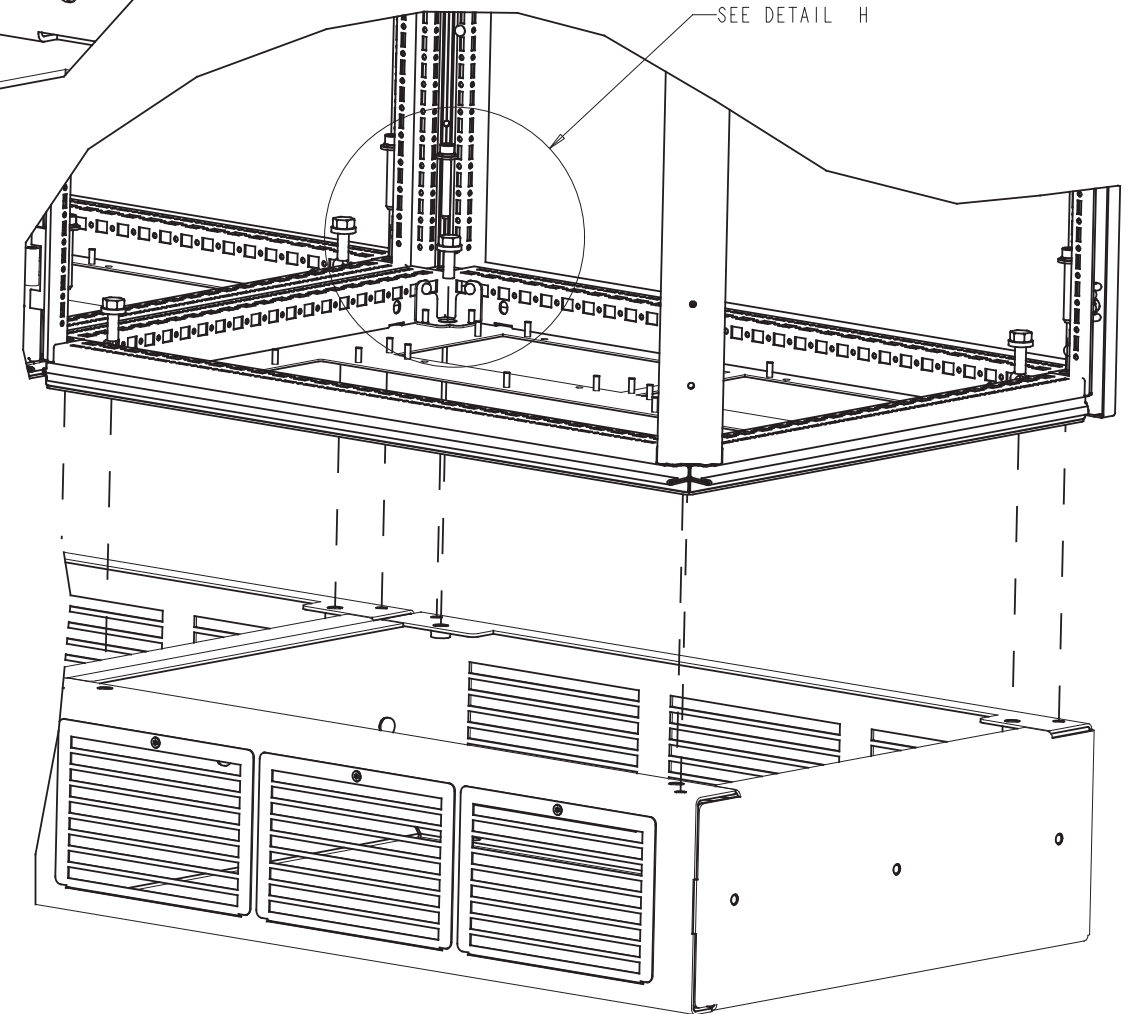
SEE DETAIL G



DETAIL H

INSTALL M8X60mm BOLT WITH LOCK WASHER AND FLAT WASHER THROUGH FRAME INTO THREADED HOLE IN BASE. INSTALL 4 BOLTS PER CABINET.

INSTALL M10X30mm BOLT WITH CAPTIVE LOCK WASHER AND FLAT WASHER THROUGH BASE PLATE AND INTO THREADED HOLE IN BASE. INSTALL 4 BOLTS PER CABINET.



DETAIL G

SEE DETAIL H

### DETAILS FOR MOUNTING FREQUENCY CONVERTER ONTO BASE

TITLE			
DRW. REF. MOUNTING/AIRFLOW, F8-F13			
SIZE	MODEL	REV	
D	177G3053-1	002	
SCALE	DRAWING NO.	SHEET	
0.250	177R0214	14 OF 14	

8

7

6

5

4

3

2

1