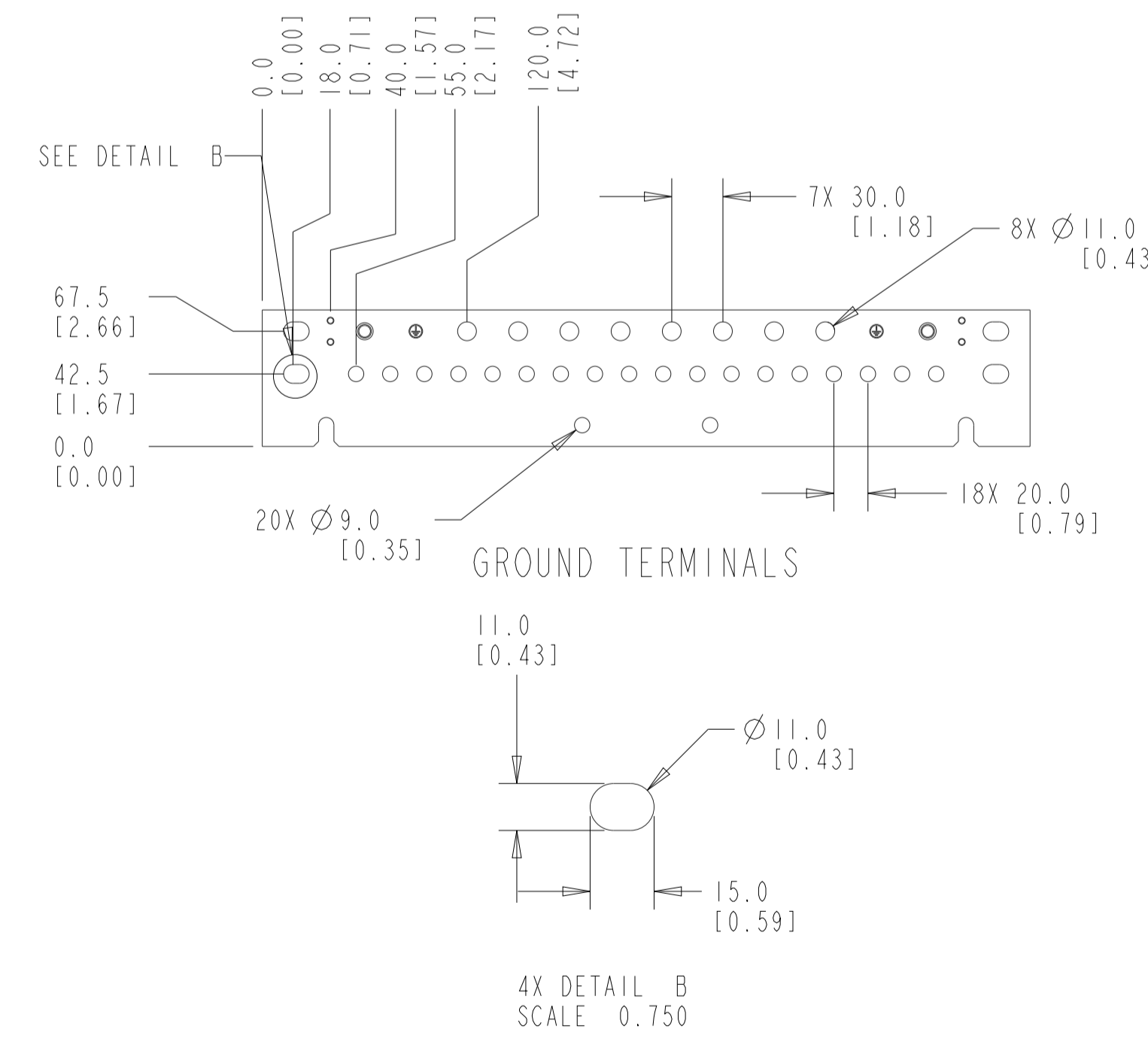
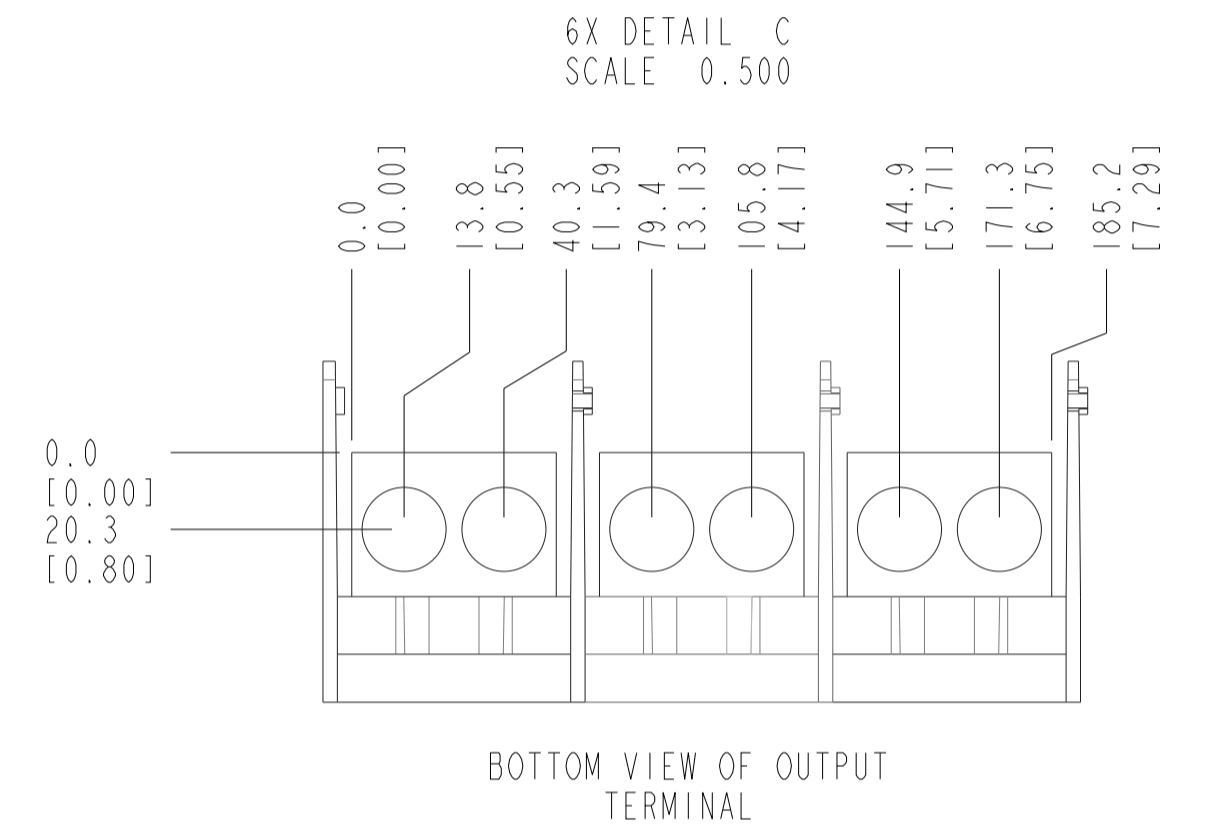
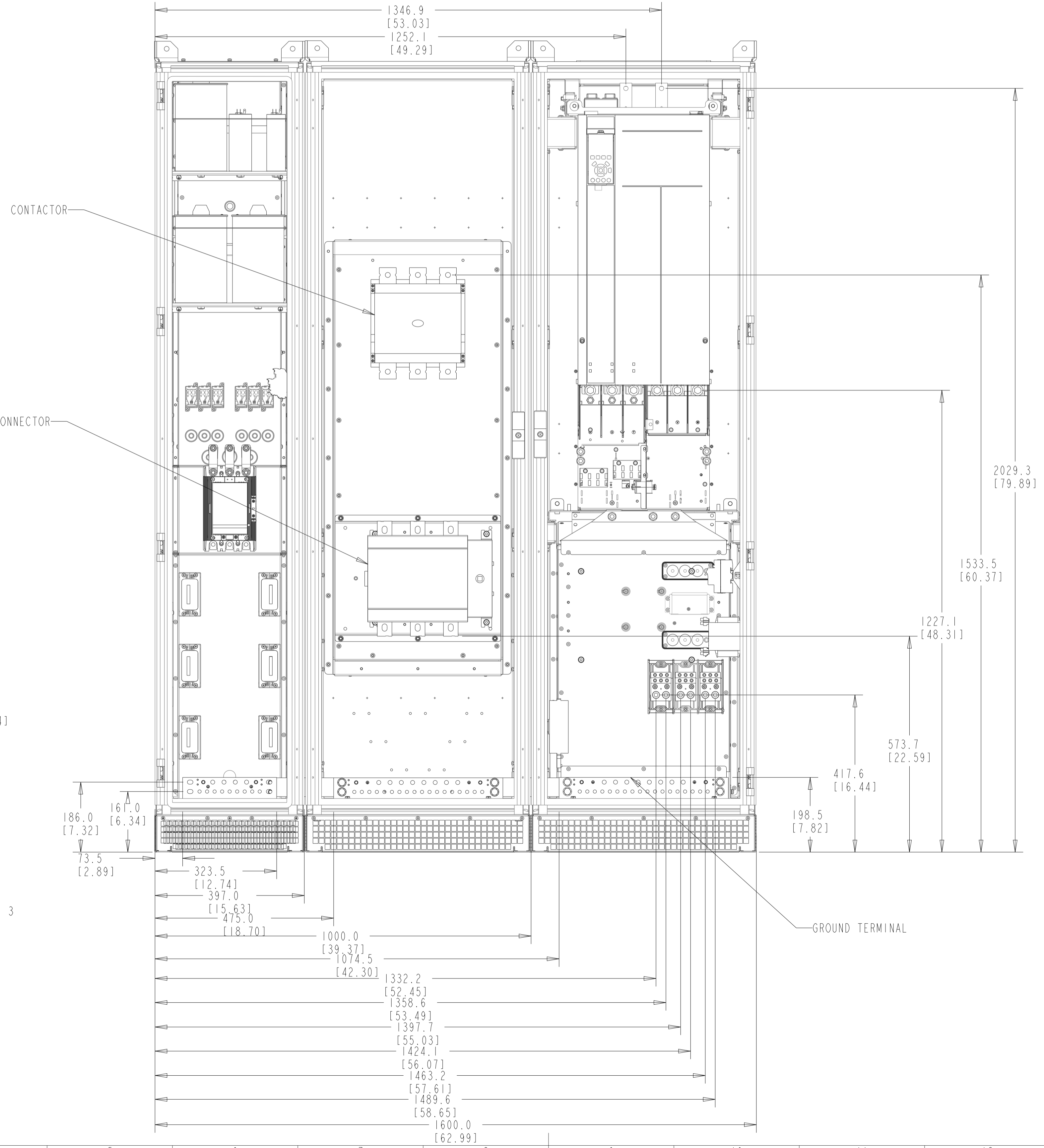
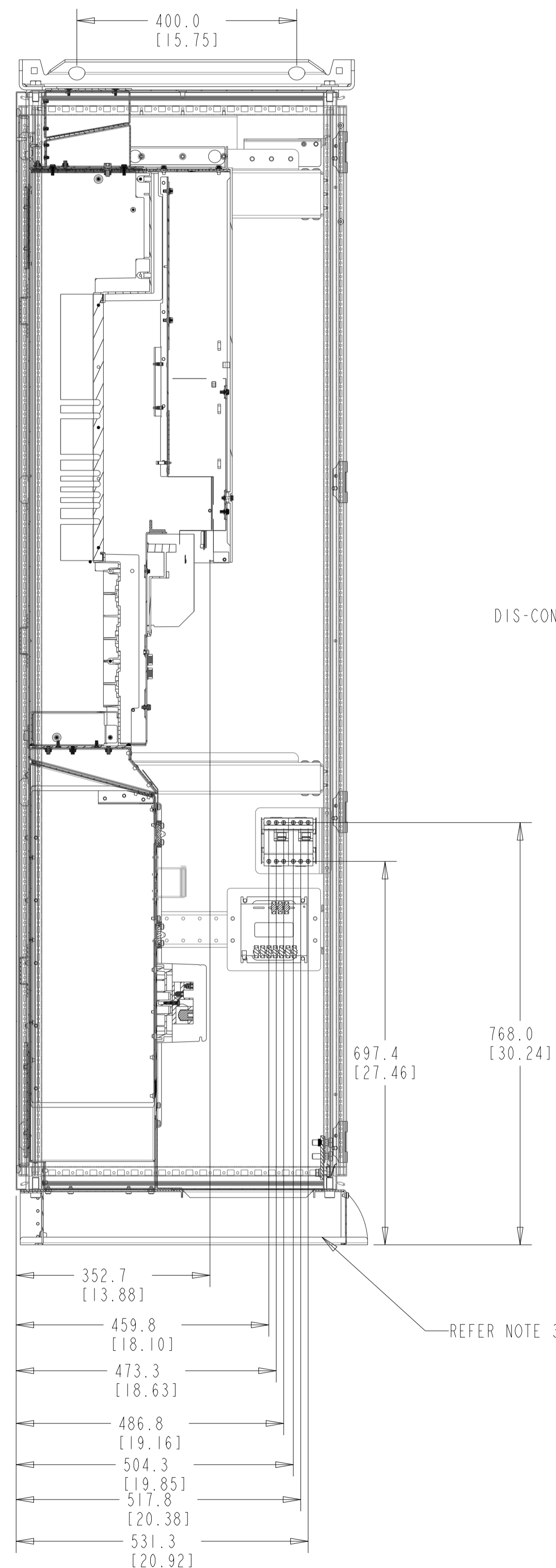
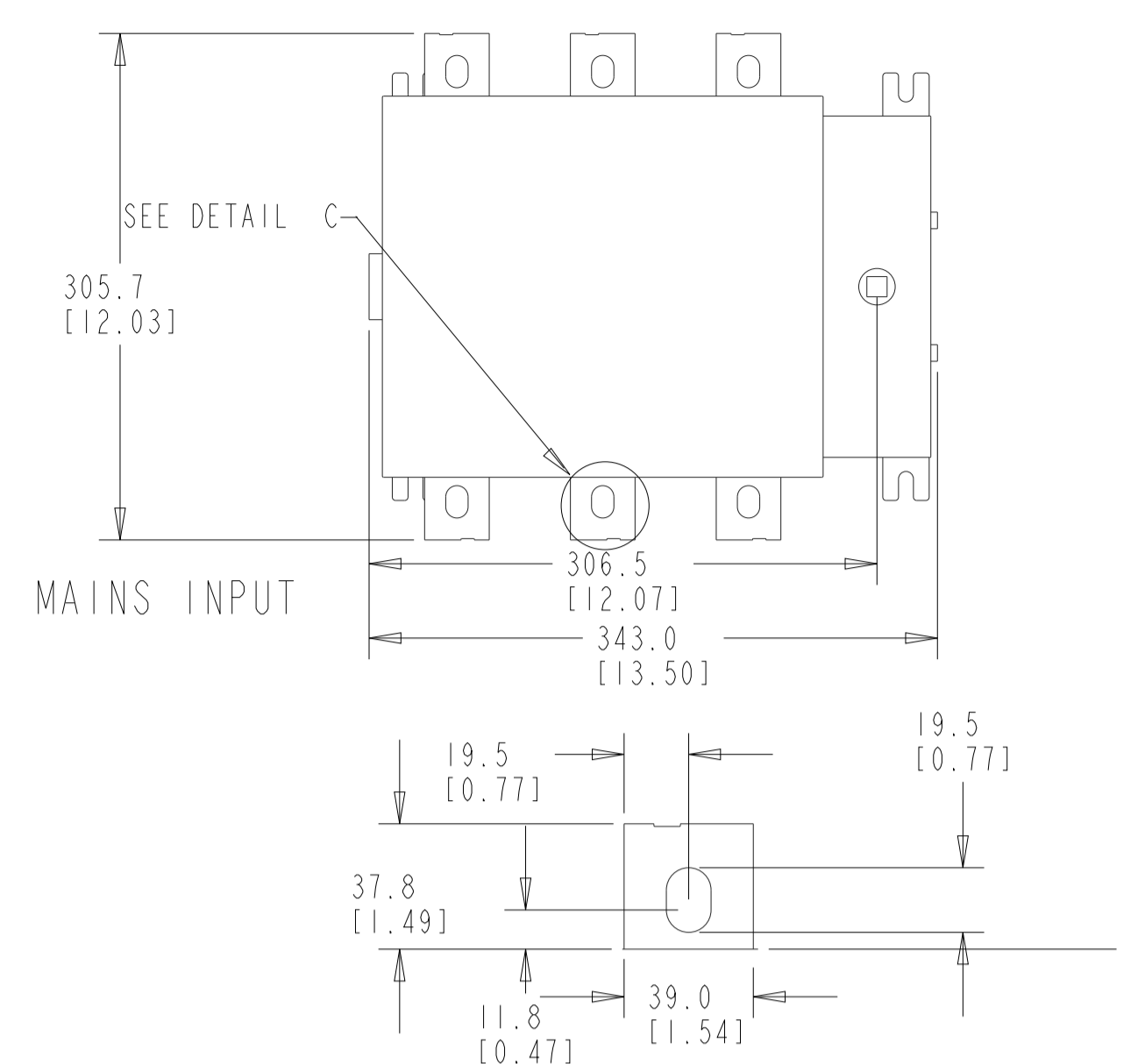
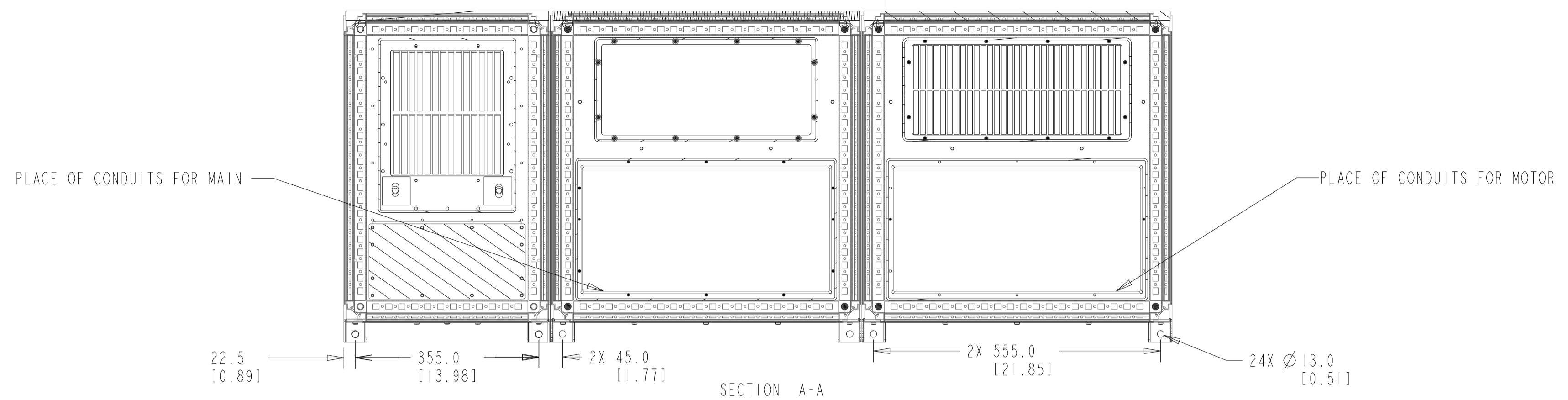
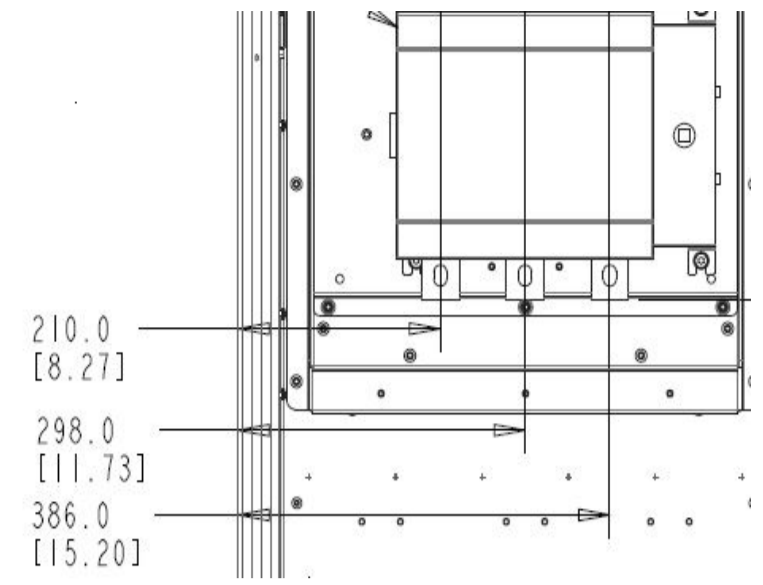


**MAINS INPUT TERMINAL DETAILS**



INTERNAL INTERFACE CABLES ARE HIDDEN IN THE DRAWING FOR BETTER CLARITY

CRITICAL CHARACTERISTICS  
 KEY CHARACTERISTICS  
 INSPECTION  
 MUST COMPLY TO ROHS DIRECTIVE 2011/65/EU

INTERPRET DIM. & TOL. PER ASME Y14.5M-1994		THIRD ANGLE PROJECTION	SCALE	SIZE	MATERIAL
ALL DIMENSIONS ARE IN MILLIMETERS			0.150	A1	
TOLERANCES UNLESS OTHERWISE SPECIFIED					FINISH
±0.10 ±0.50 ±1.0					DESCRIPTION
CONFIDENTIAL - PROPERTY OF DANFOSS A/S NORBORG, DENMARK. NOT TO BE HANDED OVER TO BE COPIED OR BE USED BY A THIRD PARTY. TWO OR THREE DIMENSIONAL REPRODUCTION OF CONTENTS TO BE AUTHORIZED BY DANFOSS A/S.					
CHANGED	SABARISH	MAY-21-2019			MCAD-PLV-D10H-IP54-LHDP -FUSDISCON-COM
DESIGNED	LAURI	MAR-01-2019			
CHECKED					
DRAWING NUMBER		132R0189	REV		002
SHEET		132R0189			1 OF 3

TOP OUT (BACK CHANNEL) ↑ AIR OUTLET TOP 383.0 [15.08] COOLING CLEARANCE

→ AIR OUTLET

← AIR INLET

← AIR INLET BOTTOM

BOTTOM IN (BACK CHANNEL)

12X Ø13.0 [0.51]

CONTROL COMPARTMENT DOOR IS NOT SHOWN IN THE DRAWING FOR SHOWING INTERNAL COMPONENTS IN CONTROL COMPARTMENT

CONTROL COMPARTMENT TERMINAL

NOTE:  
 1. BACK CHANNEL COOLING: BOTTOM IN TOP OUT  
 2. CABLE FEED: BOTTOM ENTRY & BOTTOM OUT  
 3. PLINTH HEIGHT CAN BE OF 100, 200, & 400mm HEIGHT.

