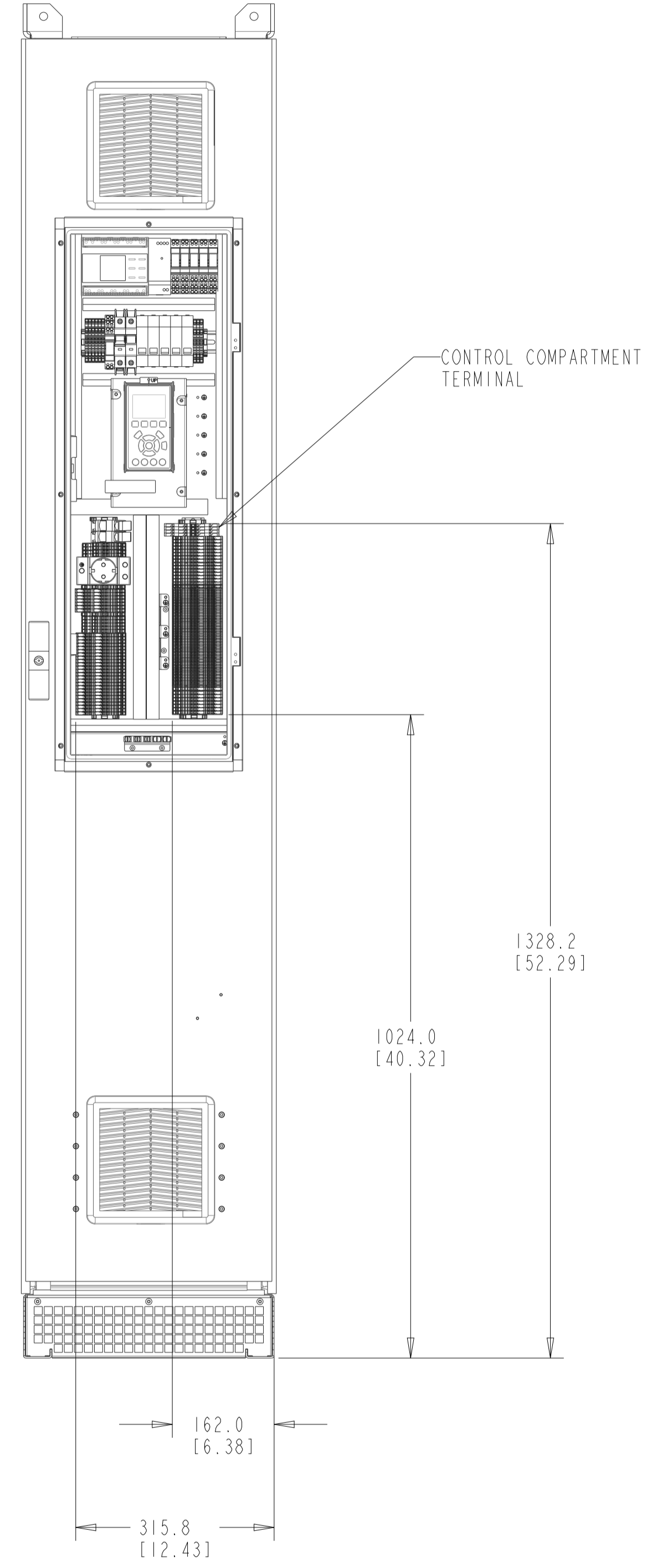
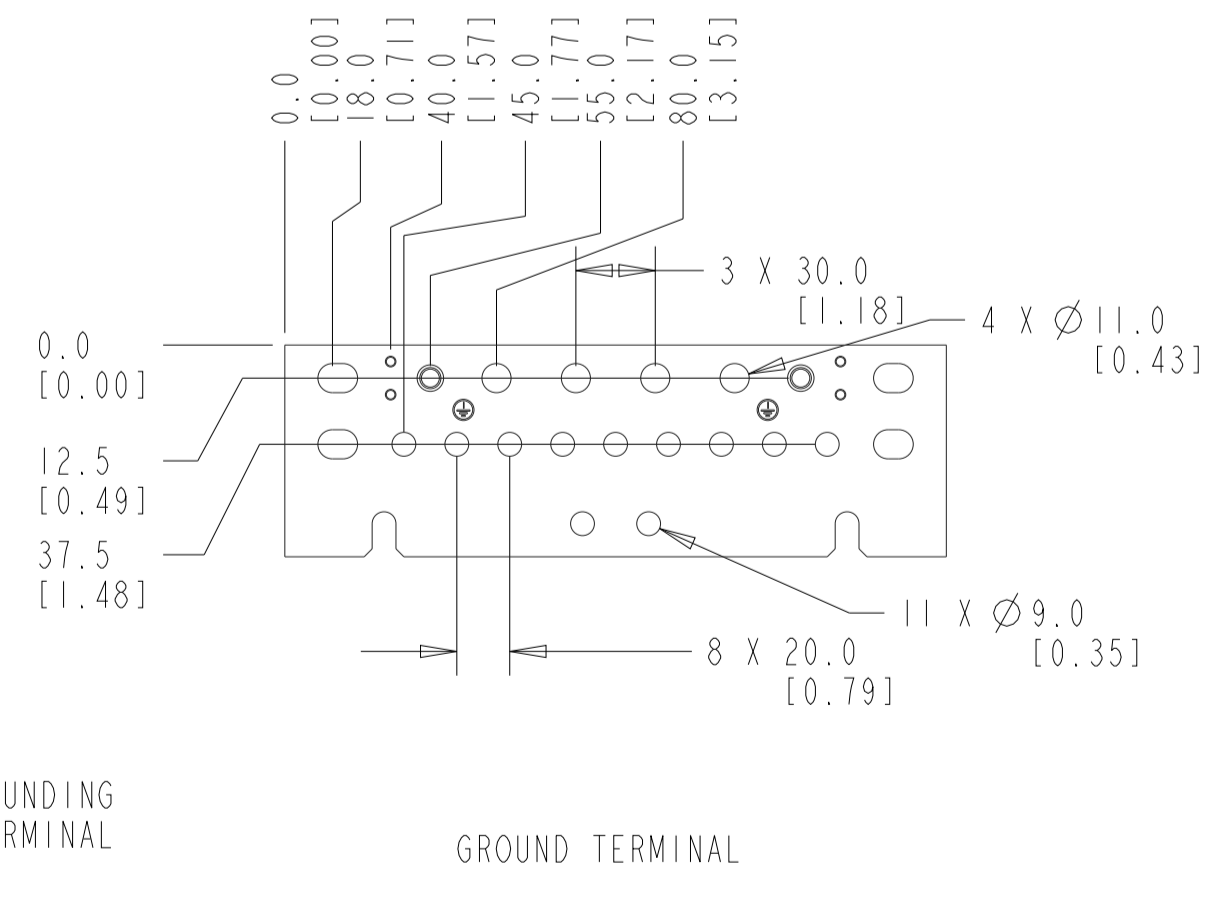
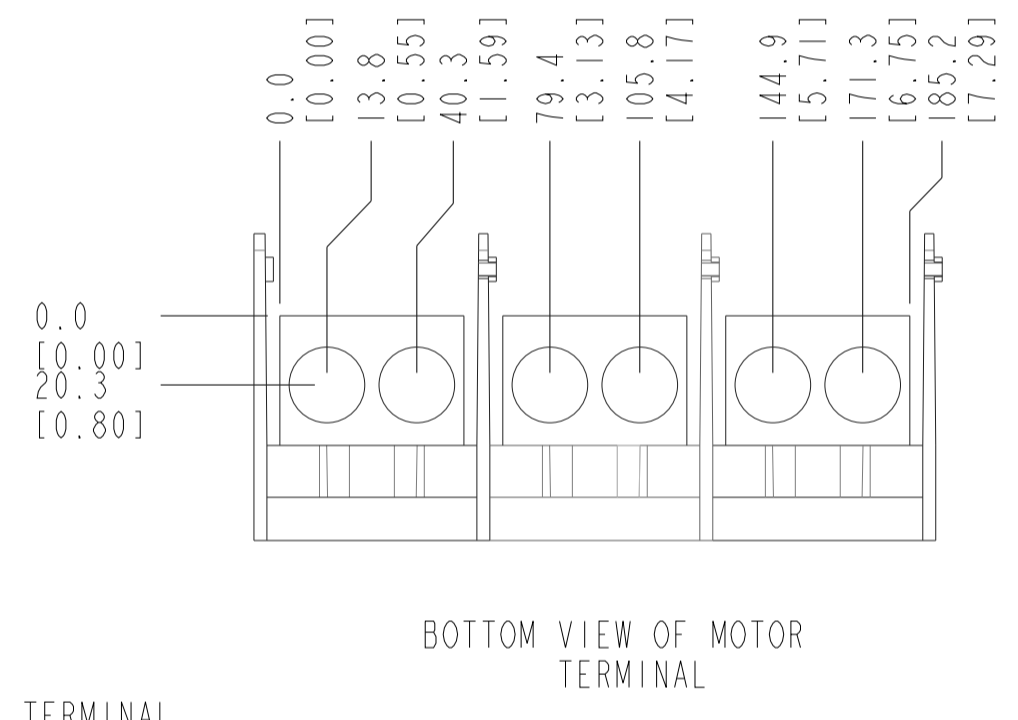
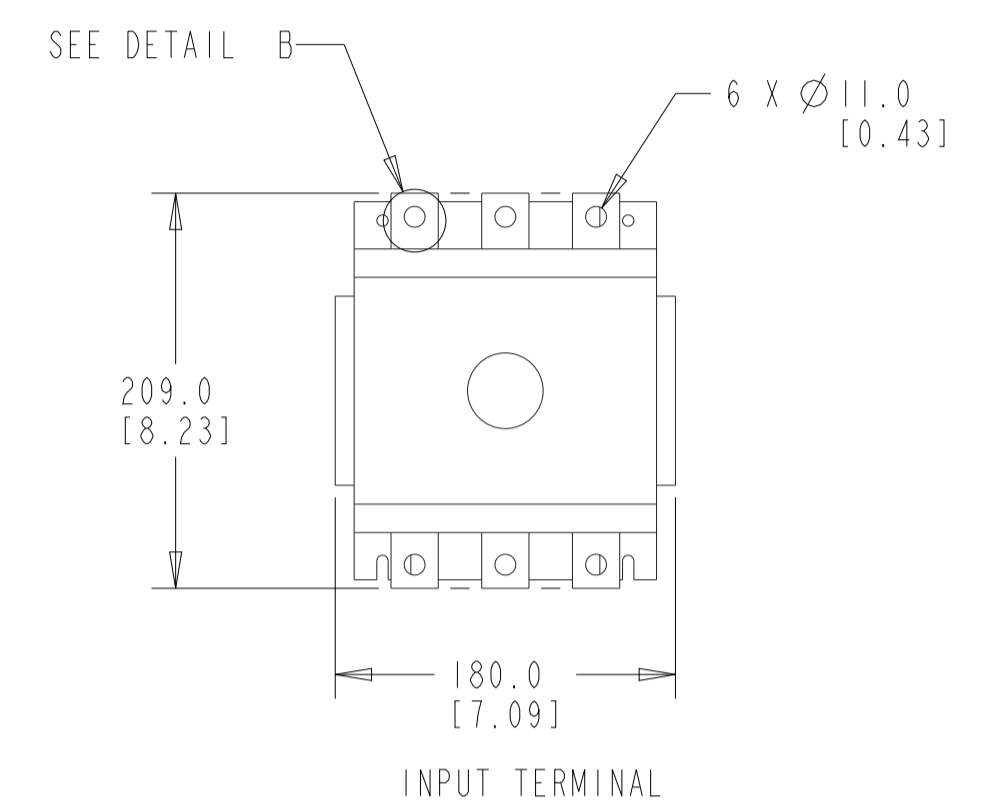
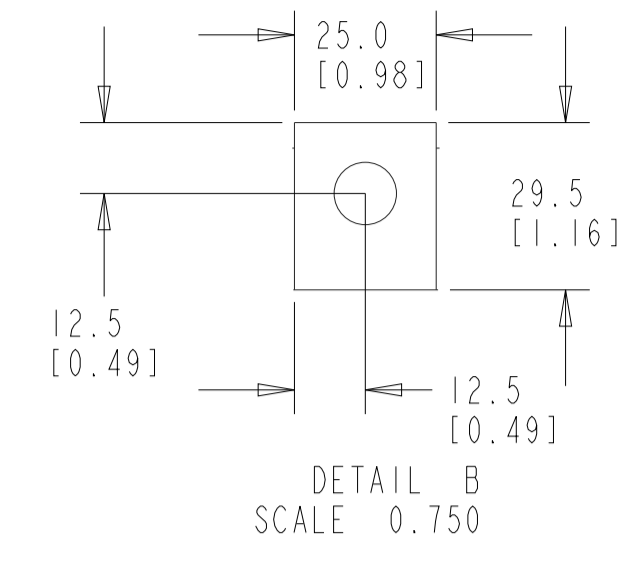
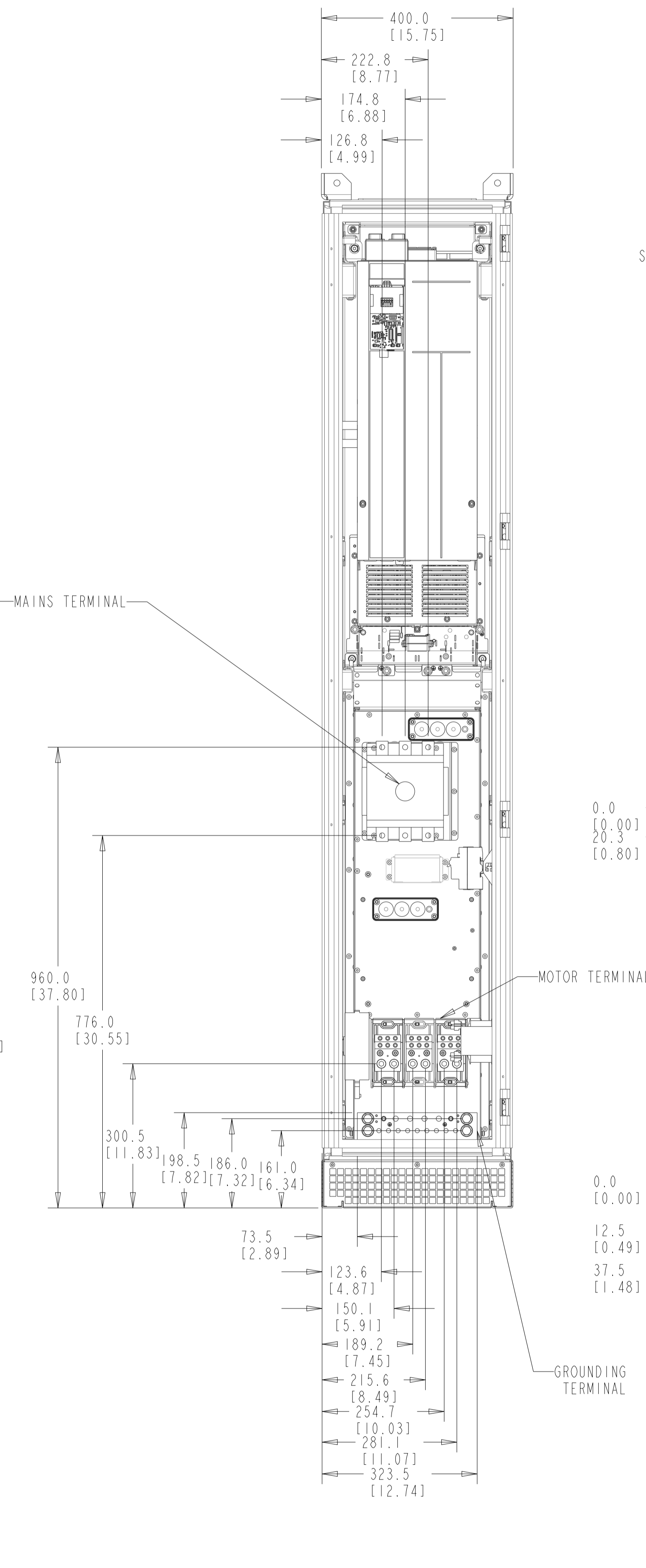
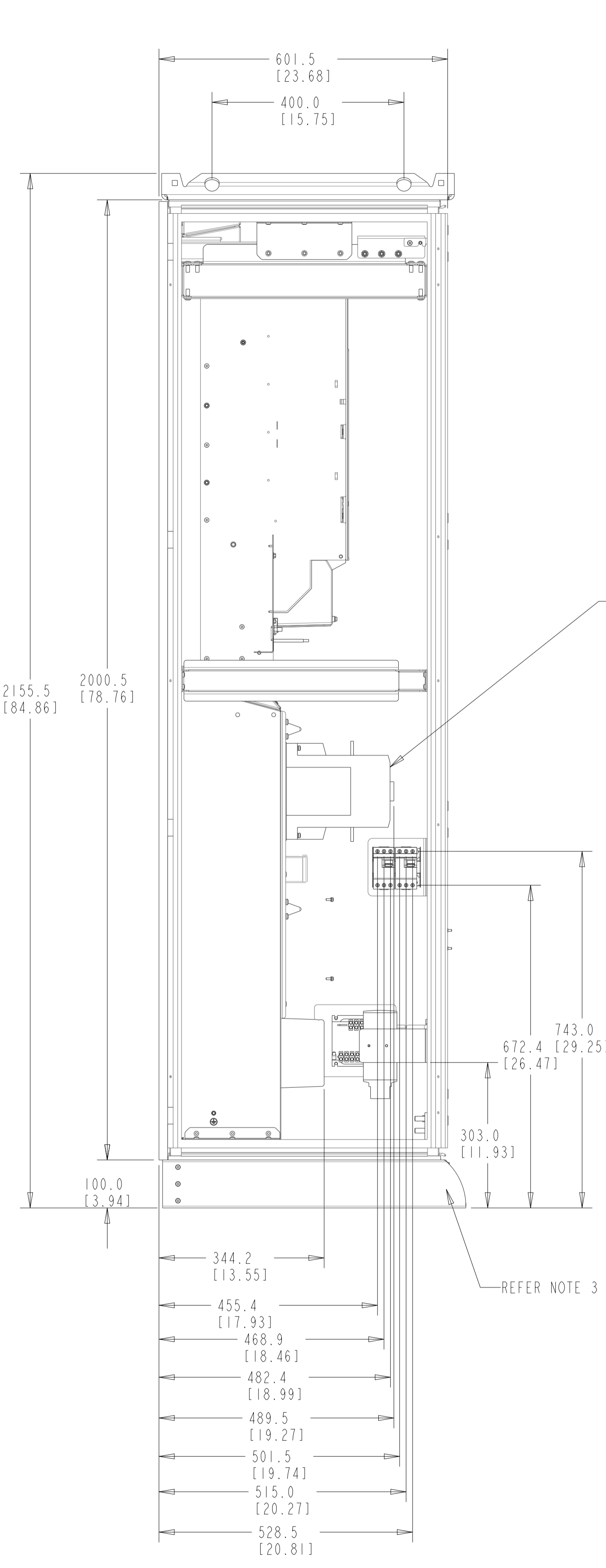


INTERNAL CABLES ARE HIDDEN  
IN THE DRAWING FOR BETTER CLARITY

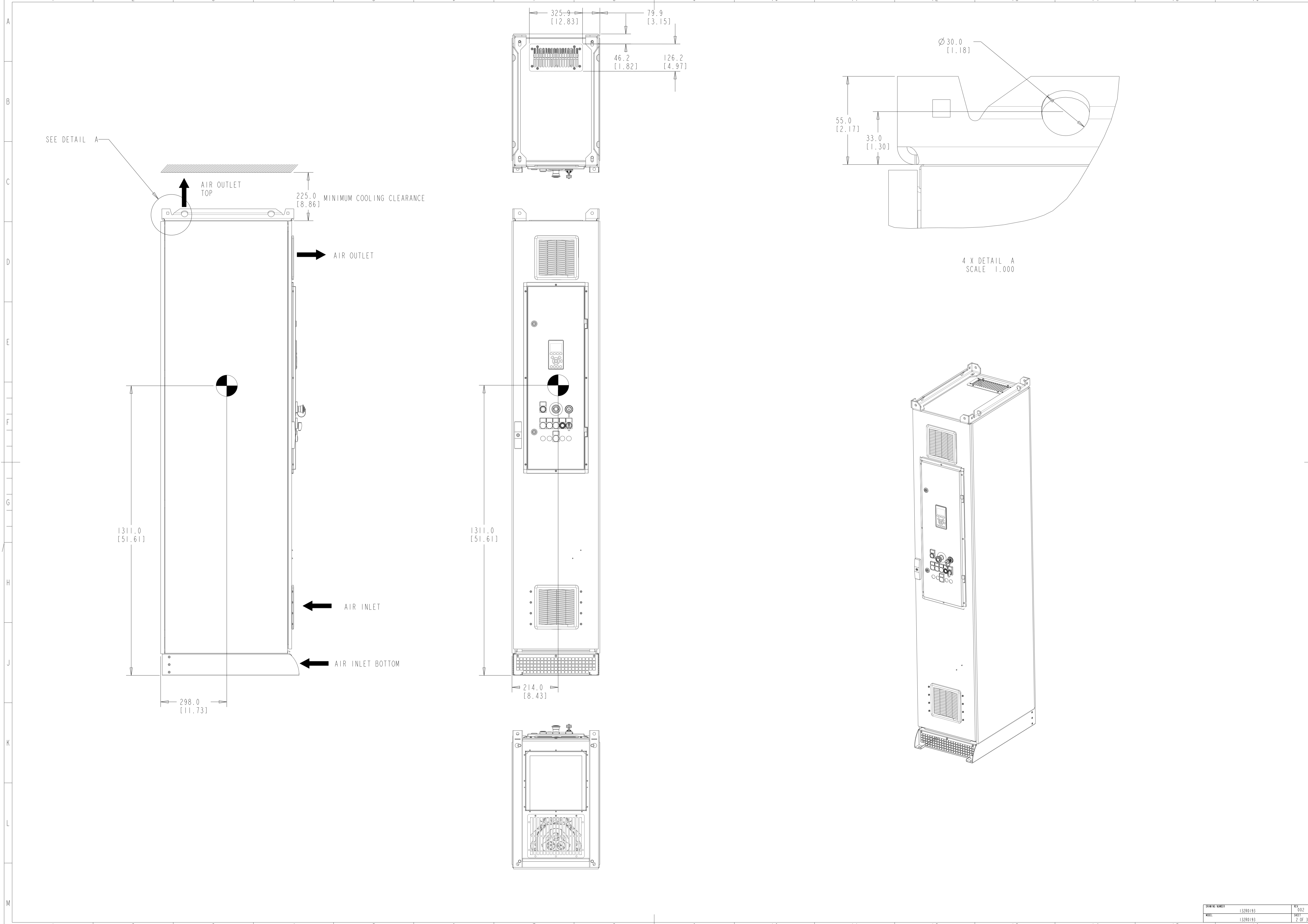
CONTROL COMPARTMENT DOOR  
IS NOT SHOWN IN THE DRAWING  
FOR SHOWING INTERNAL COMPONENTS

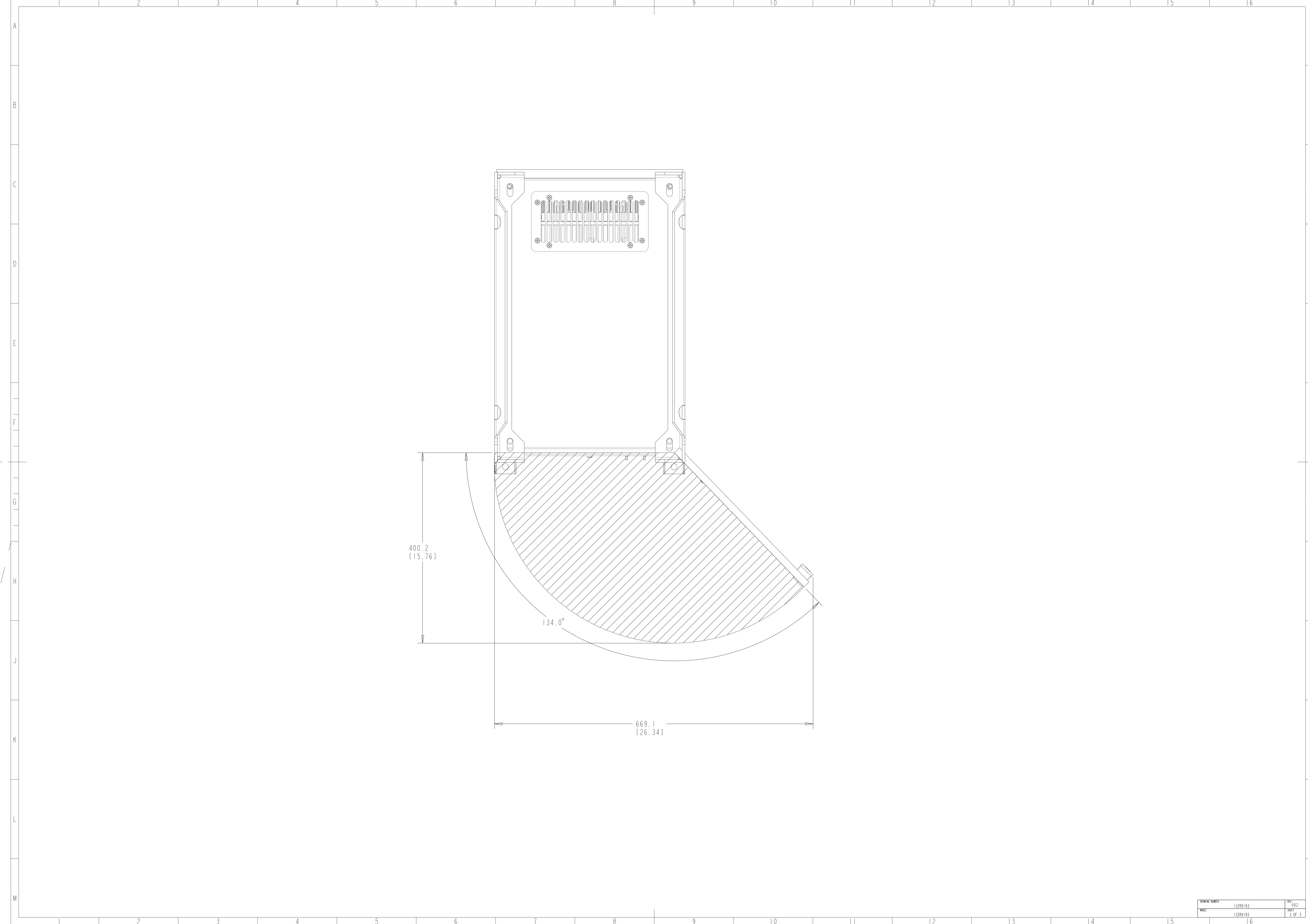


CRITICAL CHARACTERISTICS  
KEY CHARACTERISTICS  
INSPECTION  
MUST COMPLY TO ROHS DIRECTIVE 2011/65/EU

NOTE:  
1. BACK CHANNEL COOLING: BOTTOM IN TOP OUT  
2. CABLE FEED: BOTTOM ENTRY & BOTTOM OUT  
3. PLINTH HEIGHT CAN BE OF 100, 200, & 400mm HEIGHT.

INTERPRET DIM. & TOL. PER ASME Y14.5M-1994 ALL DIMENSIONS ARE IN MILLIMETERS TOLERANCES UNLESS OTHERWISE SPECIFIED ±0.10 ±0.50 ±1.0		THIRD ANGLE PROJECTION	SCALE 0.150	SIZE A1	MATERIAL	
— PDM CONTROLLED DRAWING — NOT VALID WITHOUT FROZEN DATE IN ID STAMP				FINISH		
CHANGED	SABARISH			MAY-16-19	DESCRIPTION	
DESIGNED	Loufi			FEB-22-19	MCAD-PLV-D9H-IP54-CONTACTOR	
CHECKED			TECHNICAL NUMBER 132R0193	REV 002		
CONFIDENTIAL - PROPERTY OF DANFOSS A/S HØRSHØJ, DENMARK. NOT TO BE HANDED OVER TO BE COPIED OR BE USED BY A THIRD PARTY. TWO OR THREE DIMENSIONAL REPRODUCTION OF CONTENTS TO BE AUTHORIZED BY DANFOSS A/S.					132R0193 1 OF 3	





400.2  
[15.76]

134.0°

669.1  
[26.34]