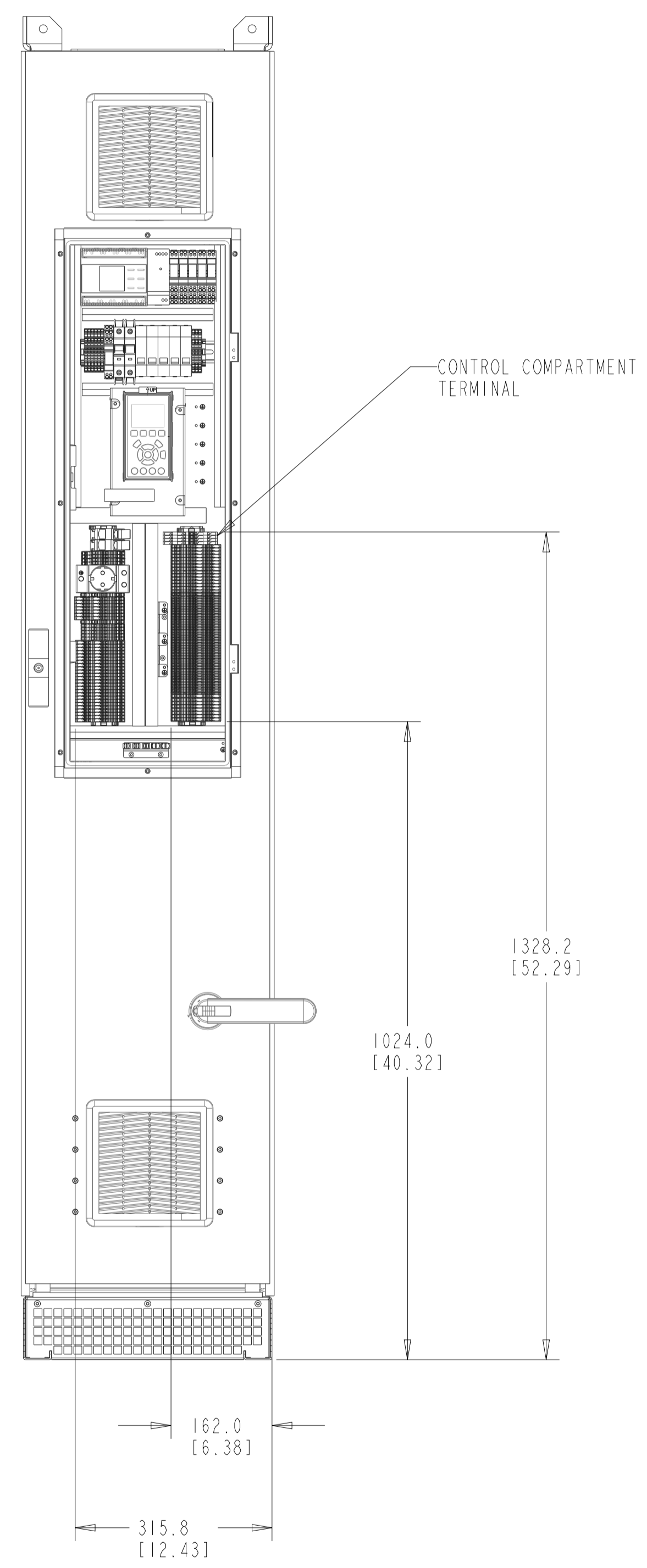
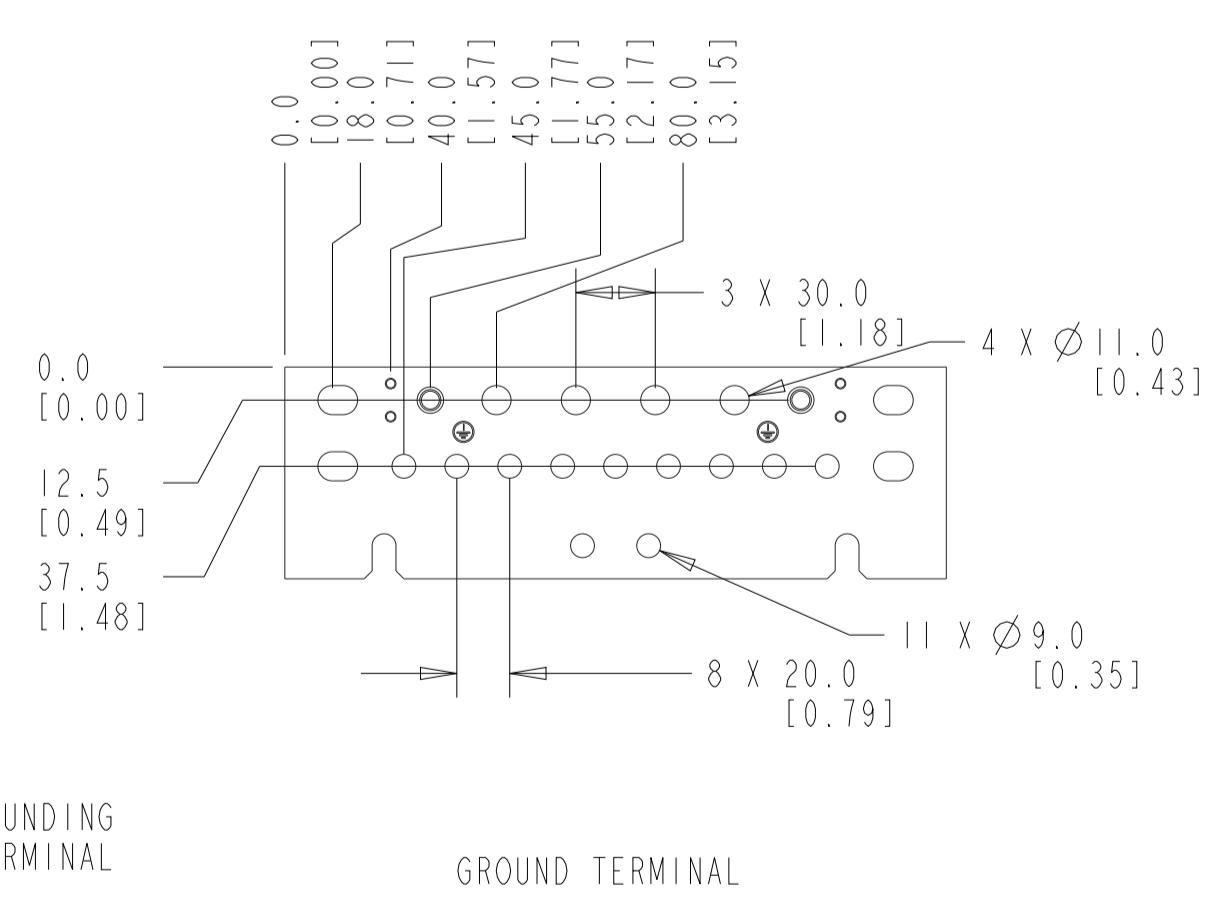
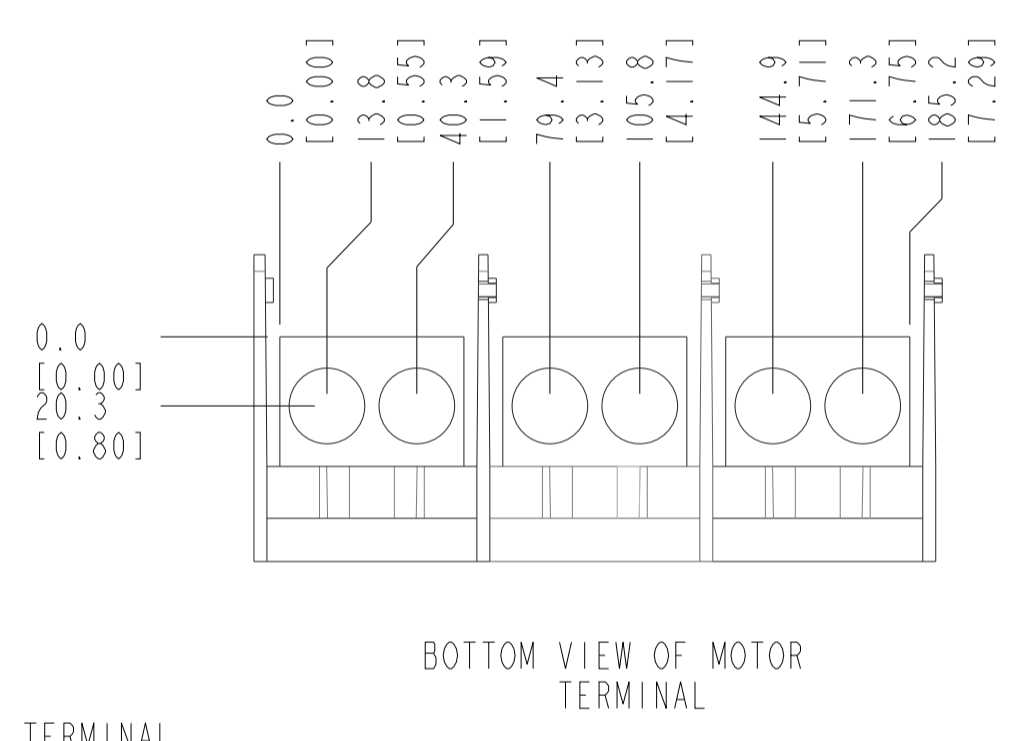
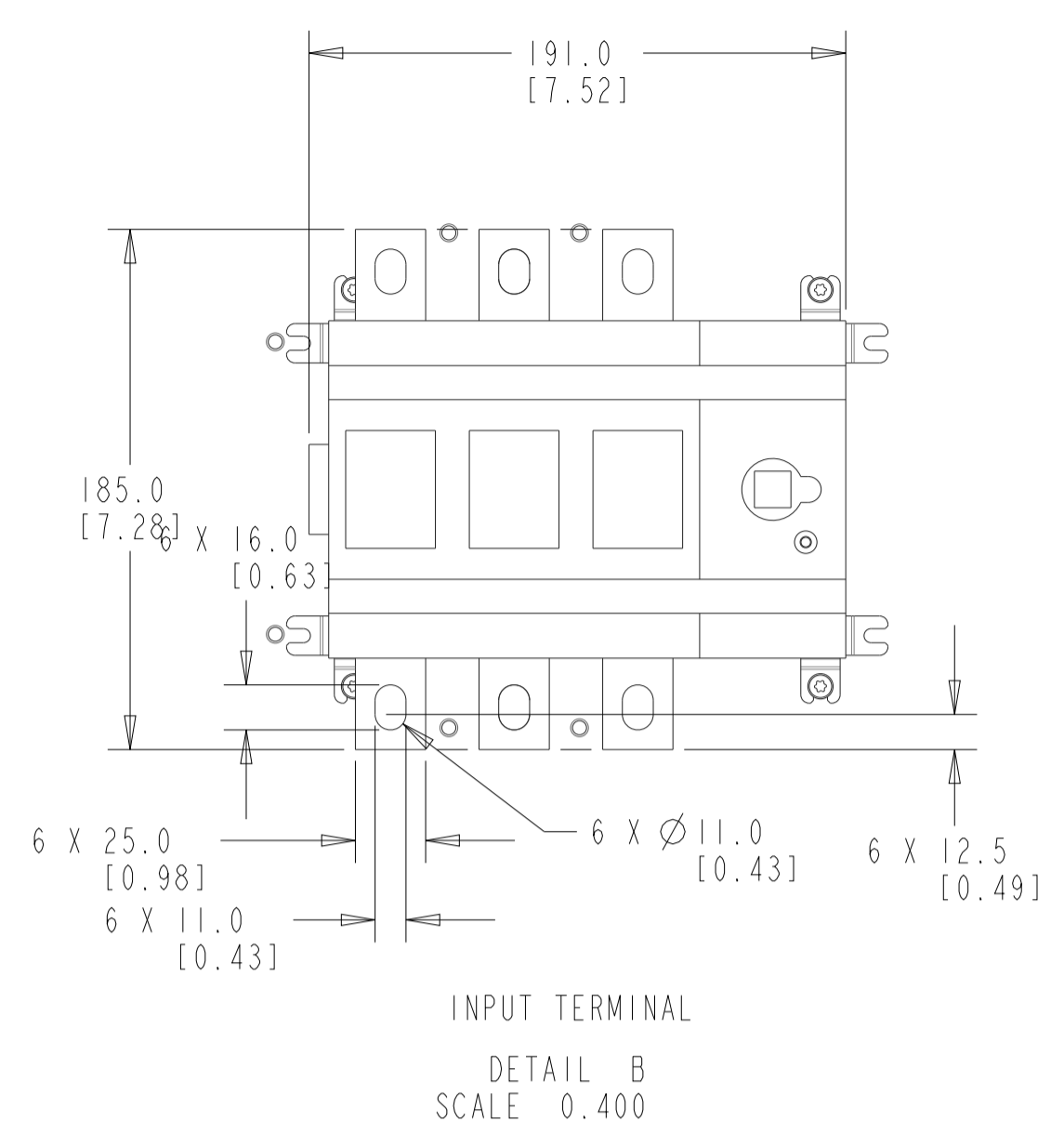
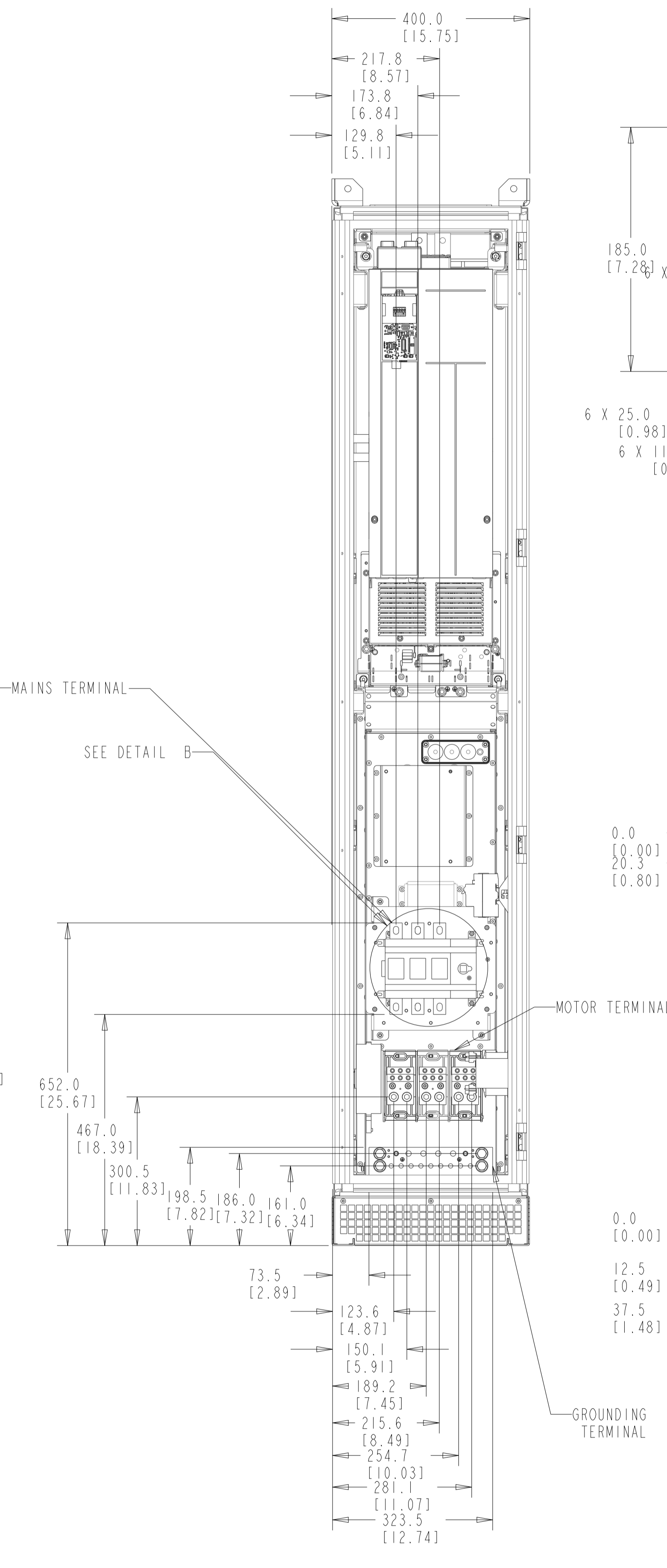
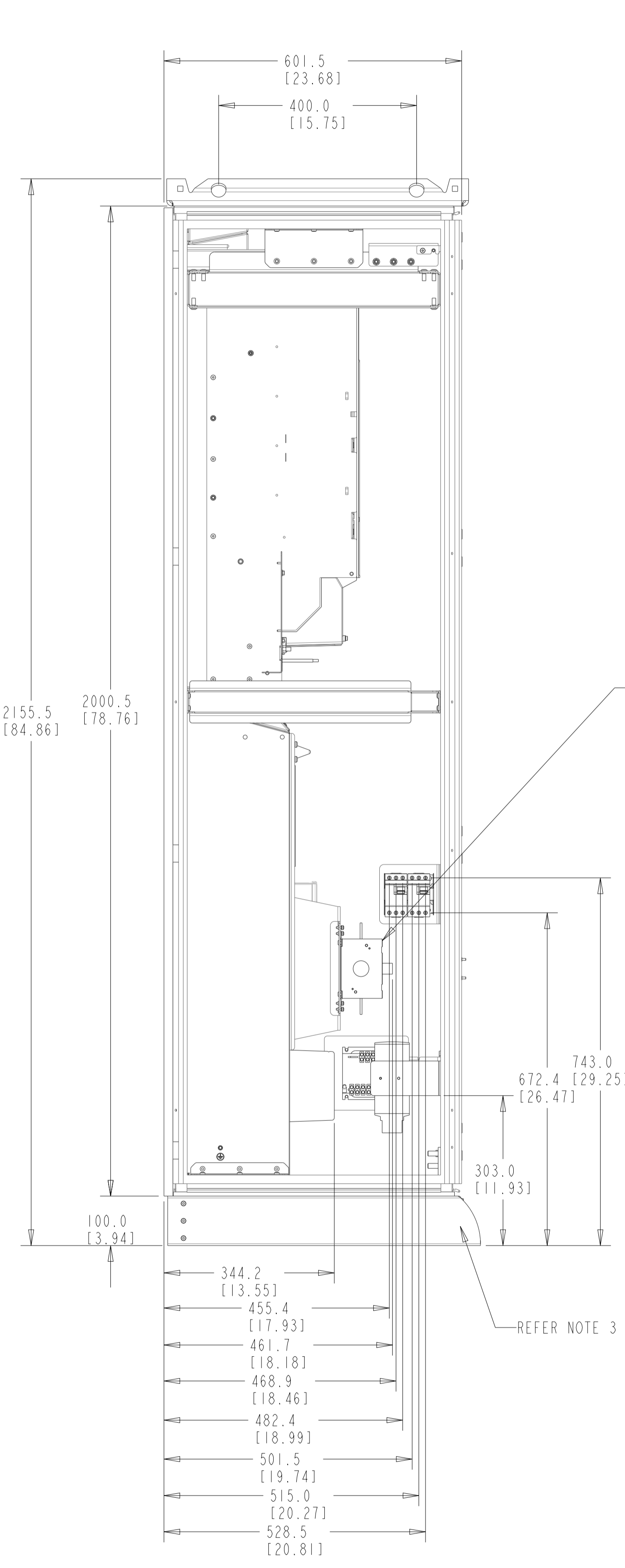


INTERNAL CABLES ARE HIDDEN  
IN THE DRAWING FOR BETTER CLARITY

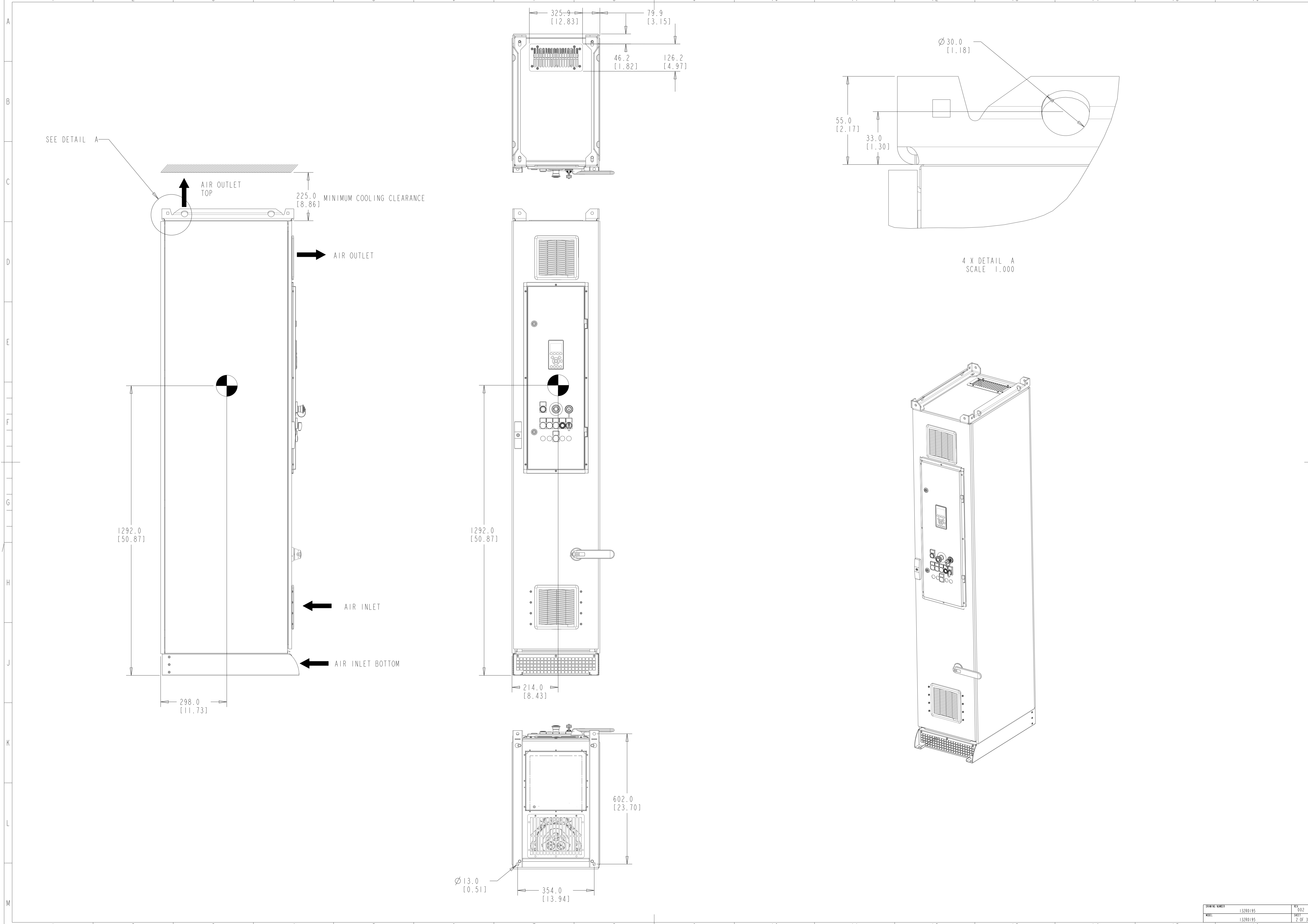
CONTROL COMPARTMENT DOOR  
IS NOT SHOWN IN THE DRAWING  
FOR SHOWING INTERNAL COMPONENTS

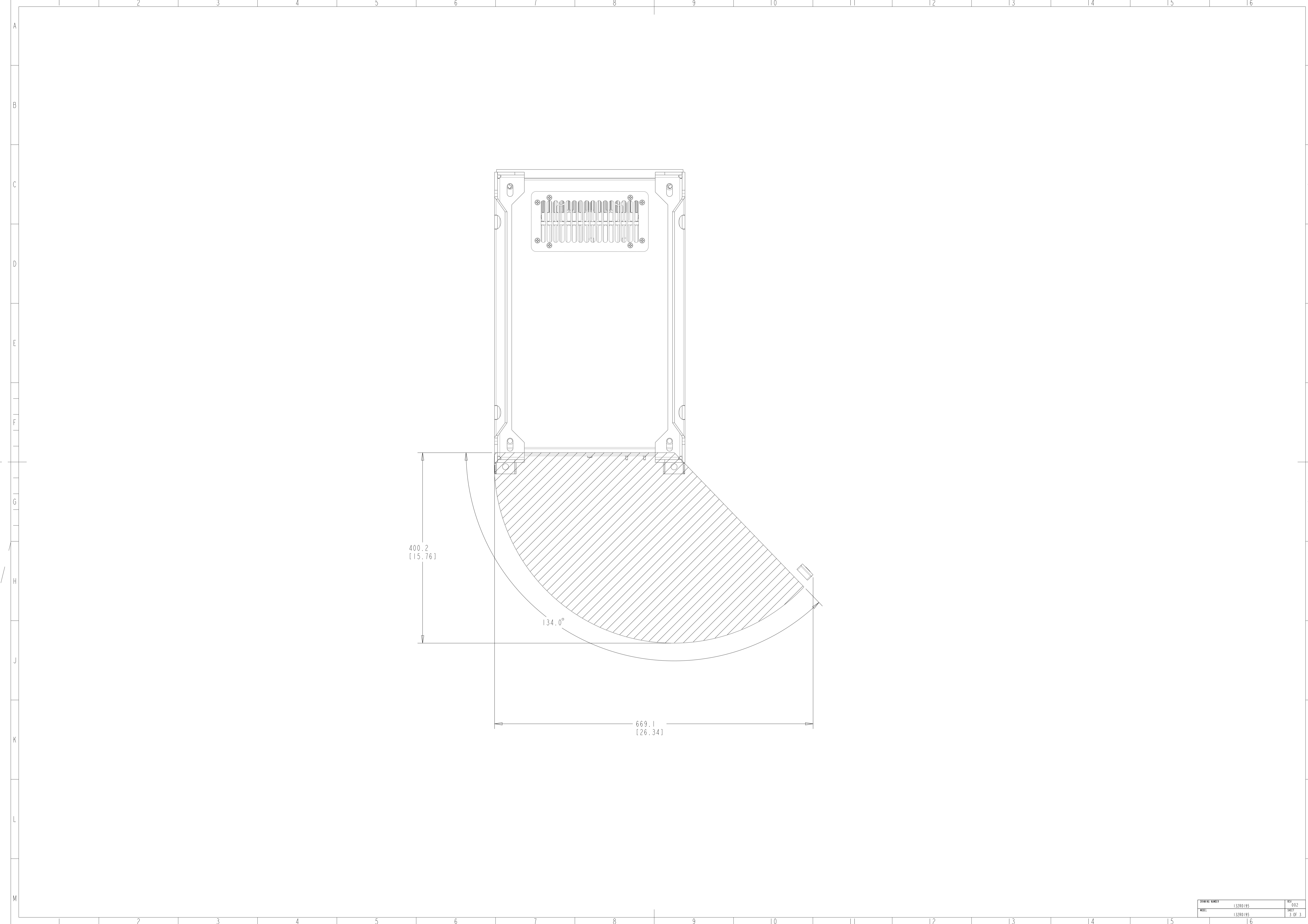


NOTE:  
1. BACK CHANNEL COOLING: BOTTOM IN TOP OUT  
2. CABLE FEED: BOTTOM ENTRY & BOTTOM OUT  
3. PLINTH HEIGHT CAN BE OF 100, 200, & 400mm HEIGHT.

CRITICAL CHARACTERISTICS  
KEY CHARACTERISTICS  
INSPECTION  
MUST COMPLY TO ROHS DIRECTIVE 2011/65/EU

INTERPRET DIM. & TOL. PER ASME Y14.5M-1994 ALL DIMENSIONS ARE IN MILLIMETERS TOLERANCES UNLESS OTHERWISE SPECIFIED ±1.0 ±0.50 ±1.0		THIRD ANGLE PROJECTION	SCALE 0.150	SIZE A1	MATERIAL
— PDM CONTROLLED DRAWING — NOT VALID WITHOUT FROZEN DATE IN ID STAMP				FINISH	
CHANGED	SABARISH			MAY-16-19	DESCRIPTION
DESIGNED	Loufi	FEB-22-19	MCAD-PLV-D9H-IP54 -SWITCHDIS-DUDT-CM		
CHECKED			REVISION		
CONFIDENTIAL - PROPERTY OF DANFOSS A/S NORBORG, DENMARK. NOT TO BE HANDED OVER TO BE COPIED OR BE USED BY A THIRD PARTY. TWO OR THREE DIMENSIONAL REPRODUCTION OF CONTENTS TO BE AUTHORIZED BY DANFOSS A/S.			WORK NUMBER 132R0195	REV 002	SHEET 1 OF 3





400.2  
[15.76]

134.0°

669.1  
[26.34]